

O.D.O.T. DISTRICT 2 SURVEY OFFICE (USE ONLY)

PERSONNEL

REFERENCE NO. 29

SHEET 1 OF 15

NOTES NUHFER

DATE 8/13/07

ROUTE US 20

H.C. HUSS

WEATHER HOT

COUNTY LUCAS

R.C. MOSER

TEMP. 86°

TOWNSHIP SYLVANIA

SECTION 20

DWG BY MILLER PID 102808

T 9 N R 6 E

TYPE MONUMENT MONBOX W/1" IPIN

ON SURFACE - ~~BELOW~~ ON

OFFSET ☉ PAVEMENT 29.30' LT : ~~RT~~

- TO - EDGE PAVEMENT

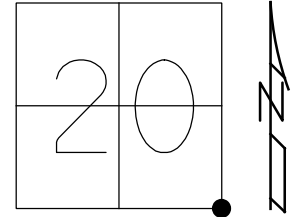
STATION: 426+87

HORZ. DATUM: NAD83(2011)

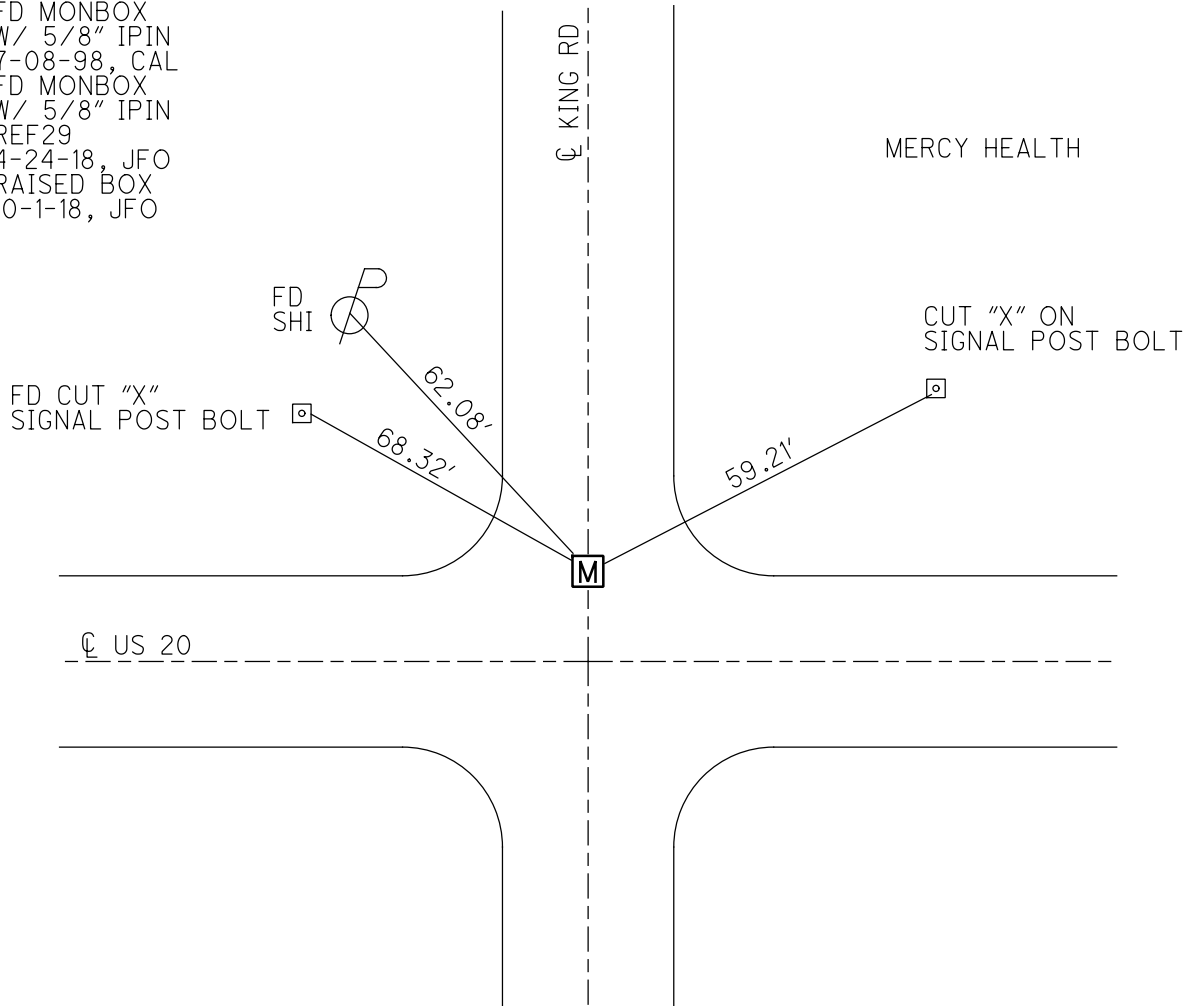
GEOID: 2012A

GRID: NORTHING: 733642.127

EASTING: 1634462.083



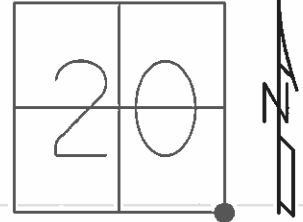
RECORD:
 FD MONBOX
 W/ 5/8" IPIN
 7-08-98, CAL
 FD MONBOX
 W/ 5/8" IPIN
 REF29
 4-24-18, JFO
 RAISED BOX
 10-1-18, JFO



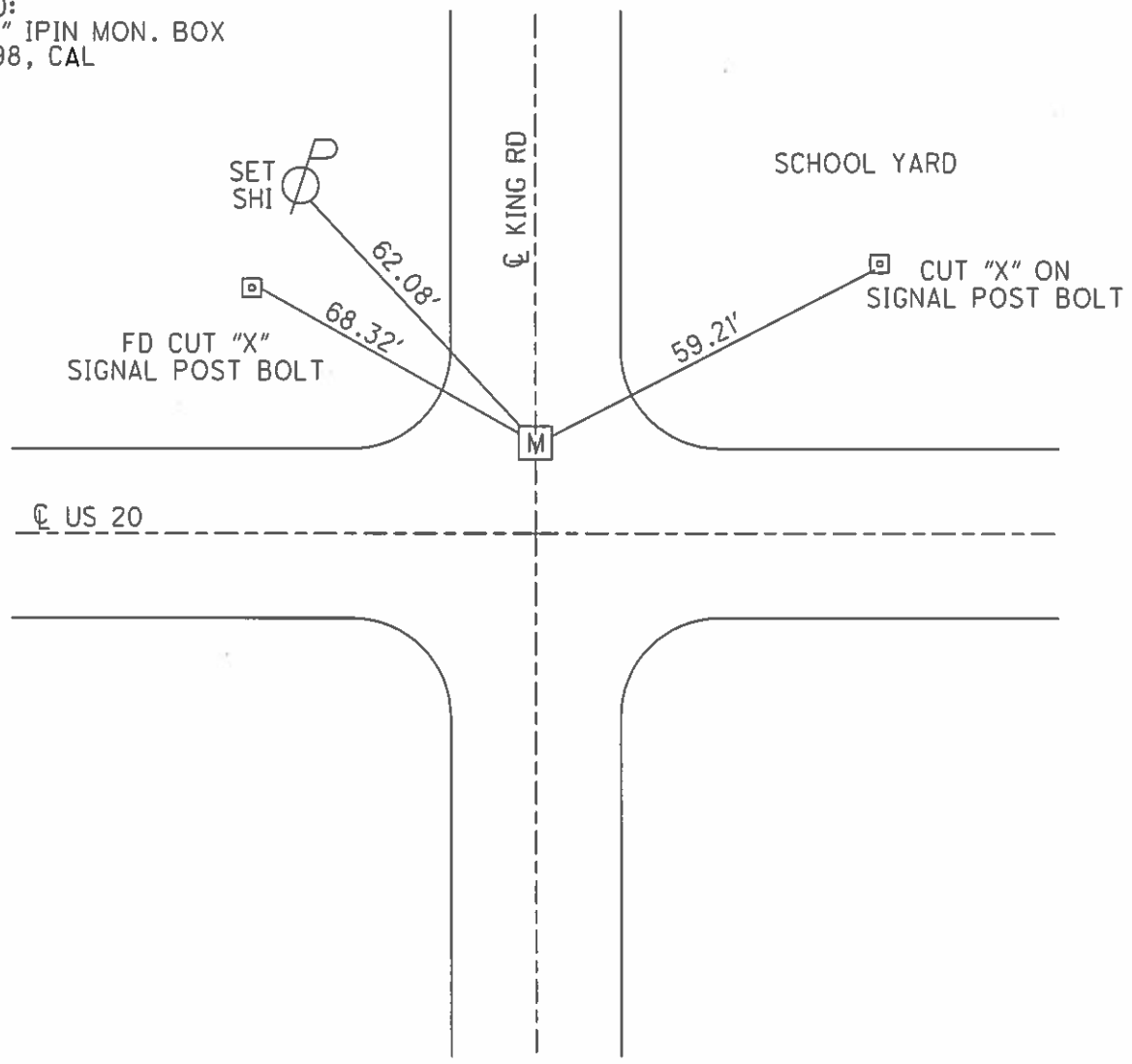
O.D.O.T. DISTRICT 2 SURVEY OFFICE (USE ONLY)

PERSONNEL _____ REFERENCE NO. 29 SHEET 1 OF 11
 NOTES NUHFER DATE 8/13/07 ROUTE US 20
 H.C. HUSS WEATHER HOT COUNTY LUCAS
 R.C. MOSER TEMP. 86° TOWNSHIP SYLVANIA
 _____ SECTION 20
 _____ T9S R6E

TYPE MONUMENT 5/8" IPIN MON. BOX
 ON SURFACE - BELOW ON
 LEFT - ☉ PAV'T - RIGHT 29.30'
- TO - EDGE PAVEMENT
 S.L.M. 426+87
 GRID: NORTHING: 733642.12 EASTING: 1634461.97



RECORD:
 FD 5/8" IPIN MON. BOX
 7/08/98, CAL



O.D.O.T. DISTRICT 2 SURVEY OFFICE (USE ONLY)

PERSONNEL _____

REFERENCE NO. 29

SHEET 1 OF 11

NOTES NUHFER

DATE 08-13-07

ROUTE SR 20

H.C. HUSS

WEATHER HOT

COUNTY LUCAS

R.C. MOSER

TEMP. +86°

TOWNSHIP SYLVANIA

SECTION 20

T 9 S R 6 E

TYPE MONUMENT 5/8" IP IN MON. BOX

ON SURFACE - ~~BELOW~~ ON SURFACE

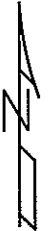
LEFT - C PAV'T - ~~RIGHT~~ 29.30' LT.

TO EDGE PAVEMENT

S.L.M. 426+87

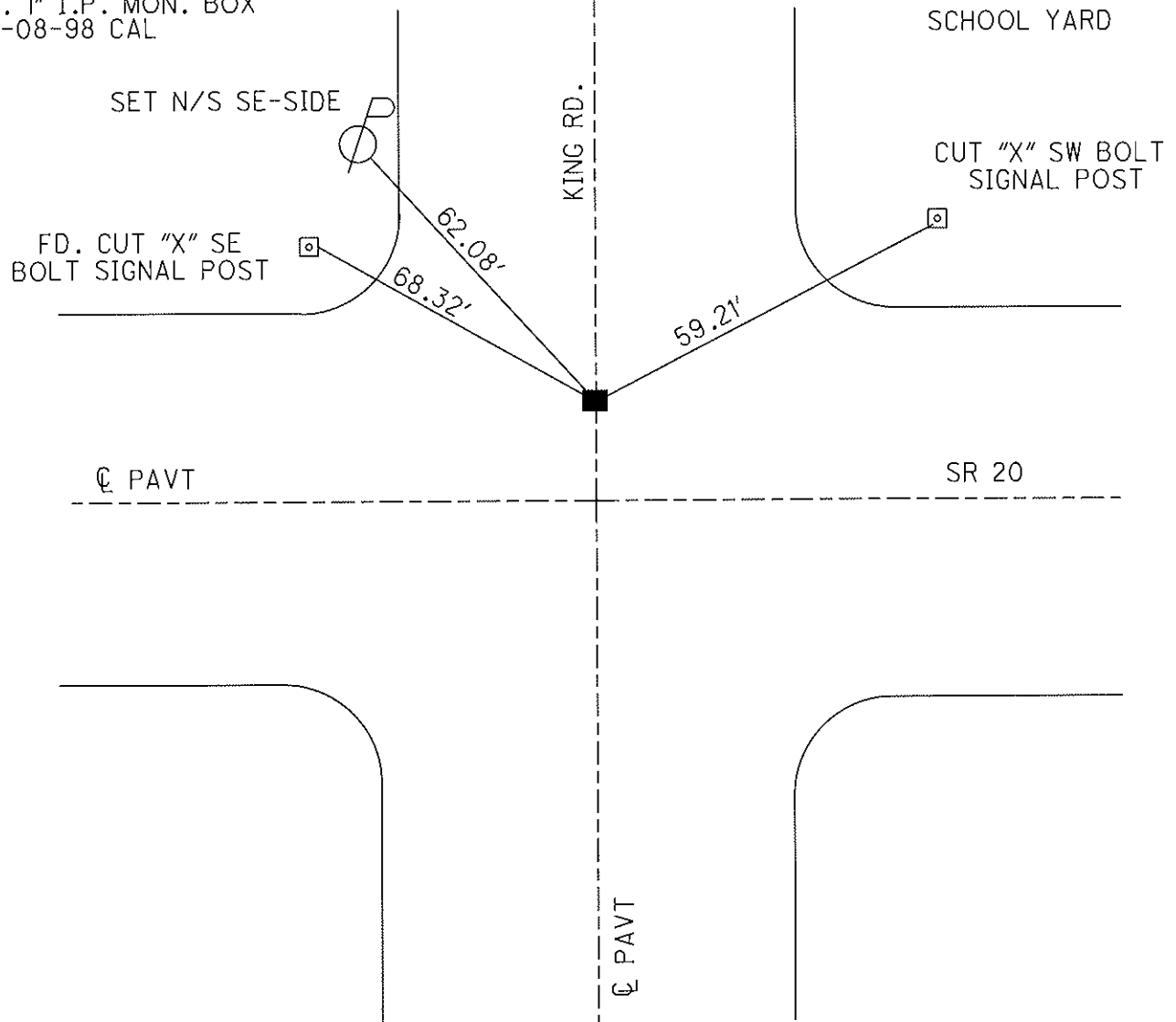
GPS Northing=733642.12 Easting=1634461.97

20	21
29	28



RECORD: STA 426+86.94

FD. 1" I.P. MON. BOX
07-08-98 CAL

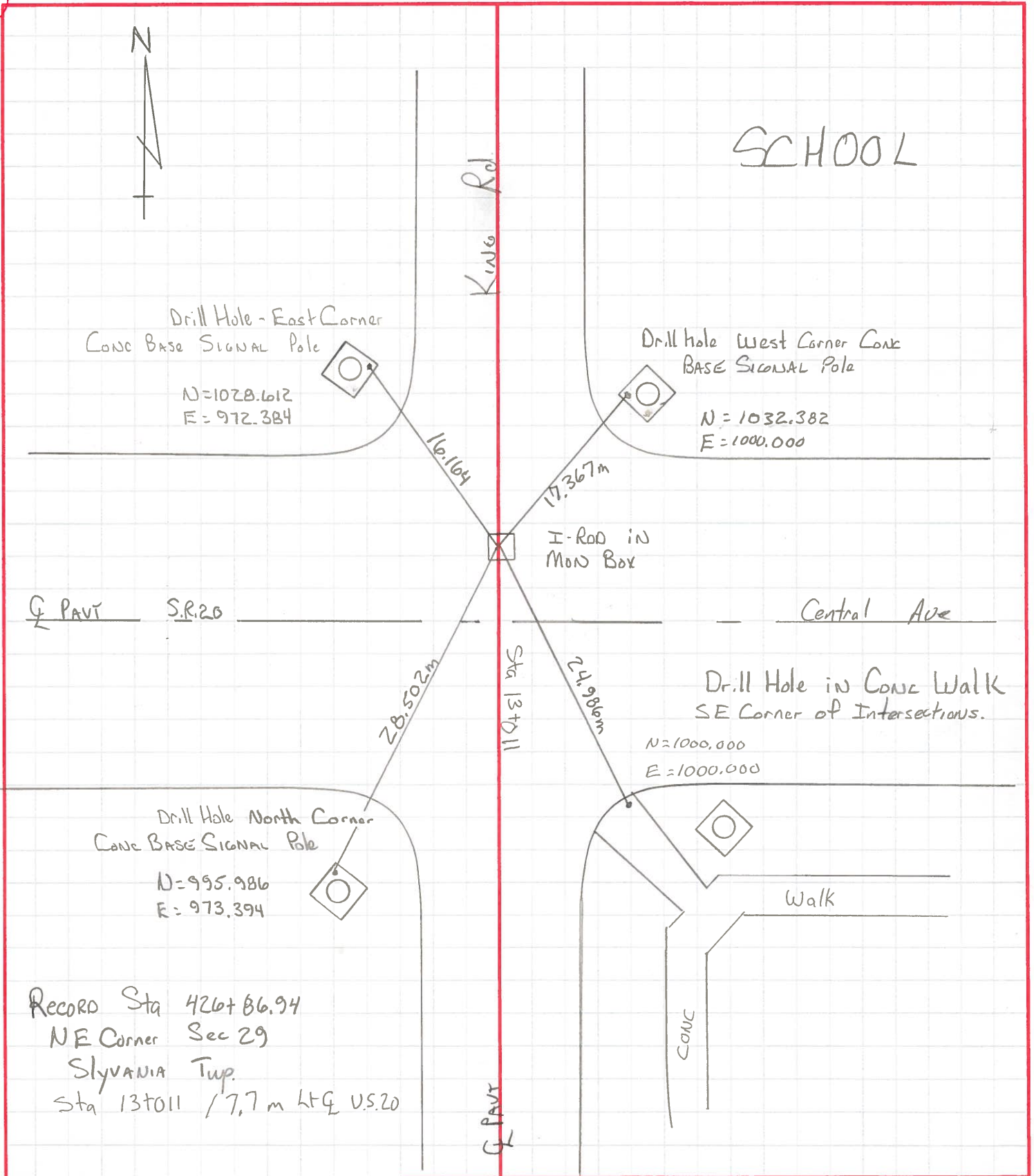


PERSONNEL	TITLE	PERSONNEL	TITLE	COUNTY	DATE	WEATHER	TEMP.
LOEHRKE				Lucas	7-7-98	Hot	+86
CORDES				U.S. 20			
Rausas				NE Corner Sec 29			
Helm							

DESCRIPTION Ref ties @ King Rd & U.S. 20 JOB NO. _____

LEFT CENTER LINE RIGHT

29



RECORD Sta 426+86.94
NE Corner Sec 29
Sylvania Twp.
Sta 13+011 / 7.7 m ht U.S. 20

PERSONNEL TITLE PERSONNEL TITLE

D. CURTIS _____ COUNTY LUCAS DATE 4AUG71

D. STEVENS _____ S. R. U.S. 20 WEATHER CLOUDY

DATE 4AUG71

S. R. U.S. 20

WEATHER CLOUDY

SEC. _____

TEMP. 65°±

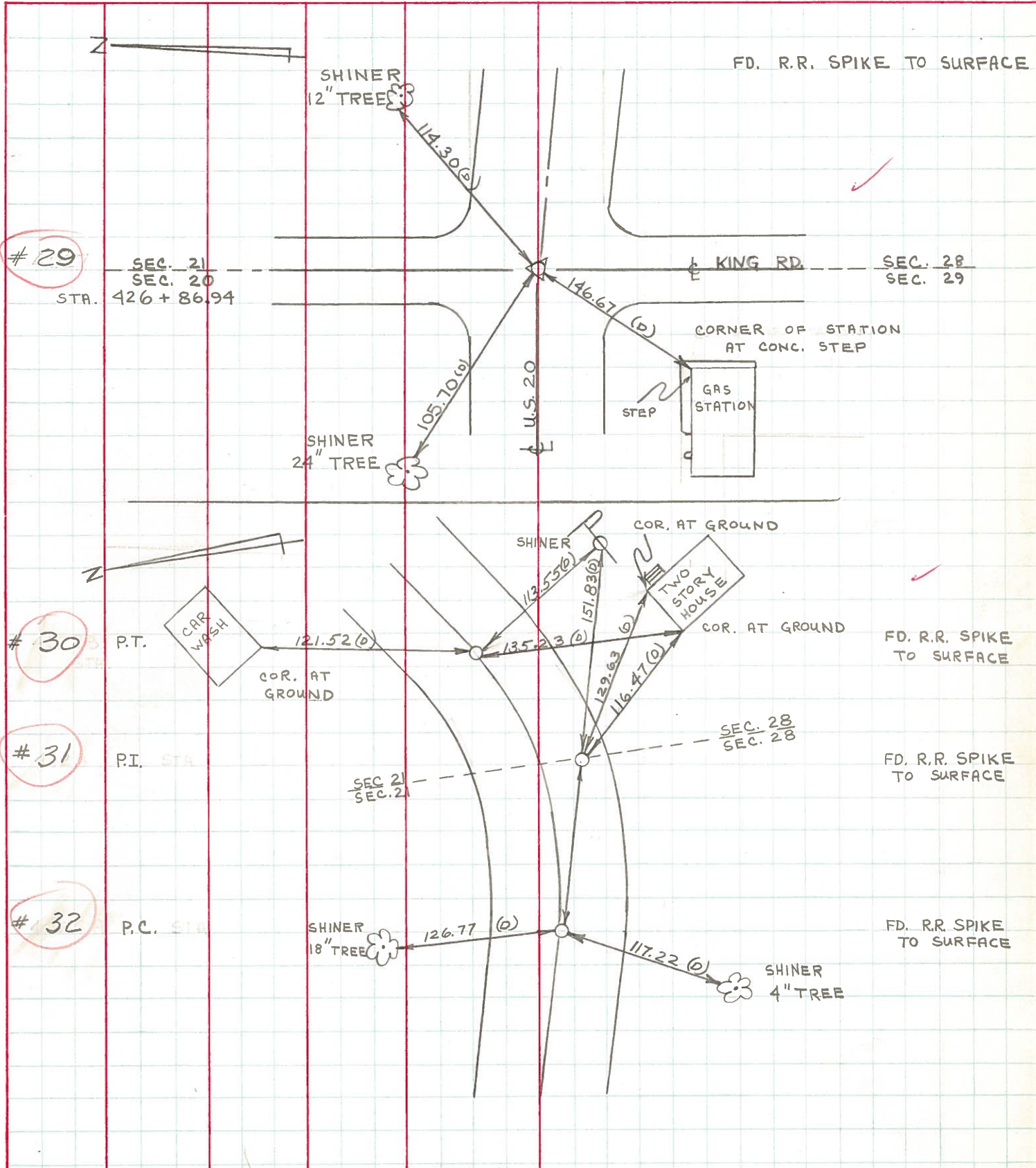
DESCRIPTION REFERENCES TO CONTROL POINTS

LEFT

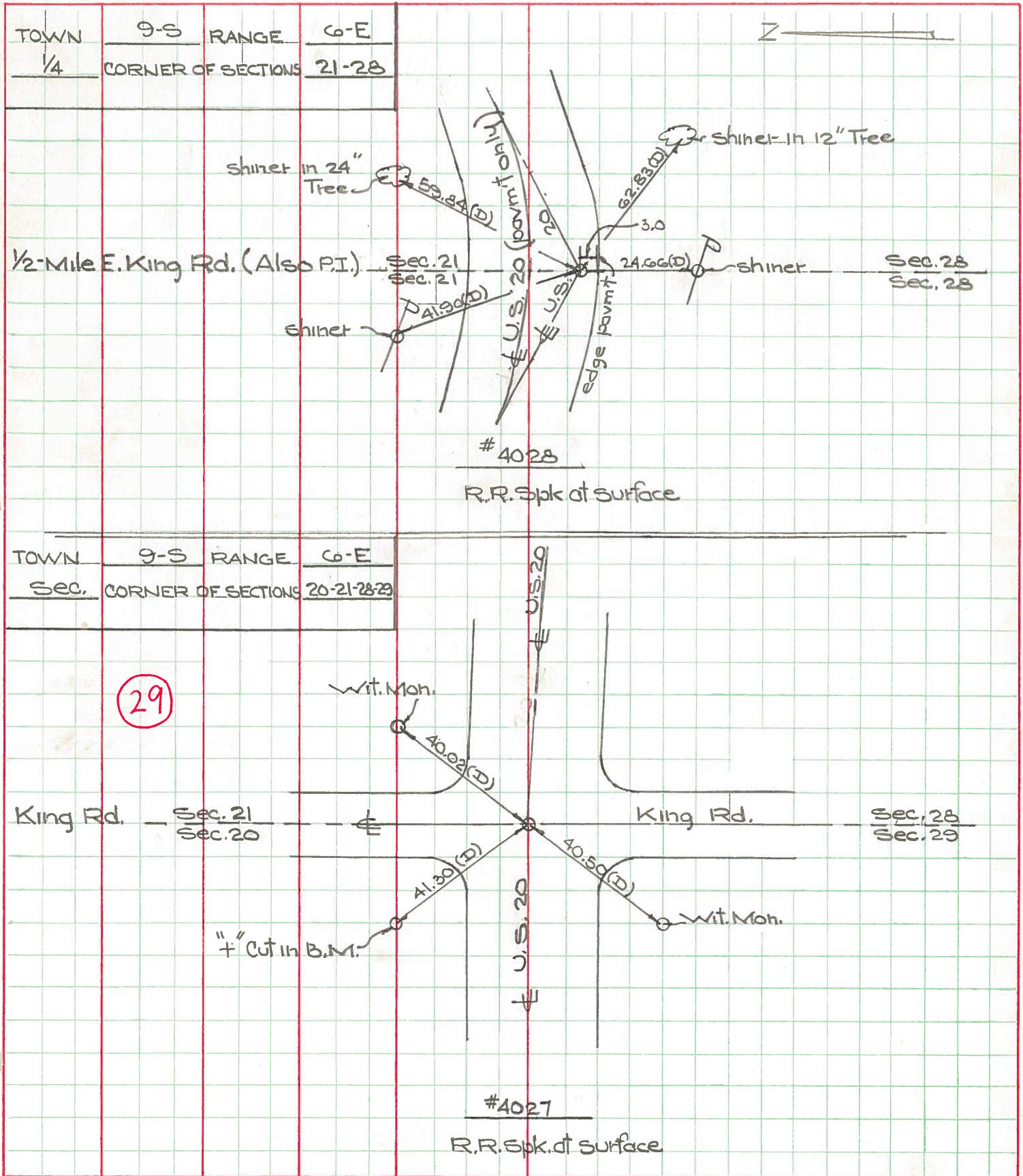
CENTER LINE

RIGHT

JOB NO. _____



PERSONNEL	TITLE	PERSONNEL	TITLE	COUNTY	Lucas	DATE	May 20, 1968
W. Denno				S. R.	20	WEATHER	mild
D. Curtis				SEC.		TEMP.	50°f
J. Teal				DESCRIPTION U.S. 20 (Central Ave) - Ref. Mon. & Control Points			
J. Brindley				JOB NO. 02994(0)			



Town T95 Range R6E

1/4 Corner of Sections 20-21

Kind of Monument Stone Remarks _____

Ball of surface

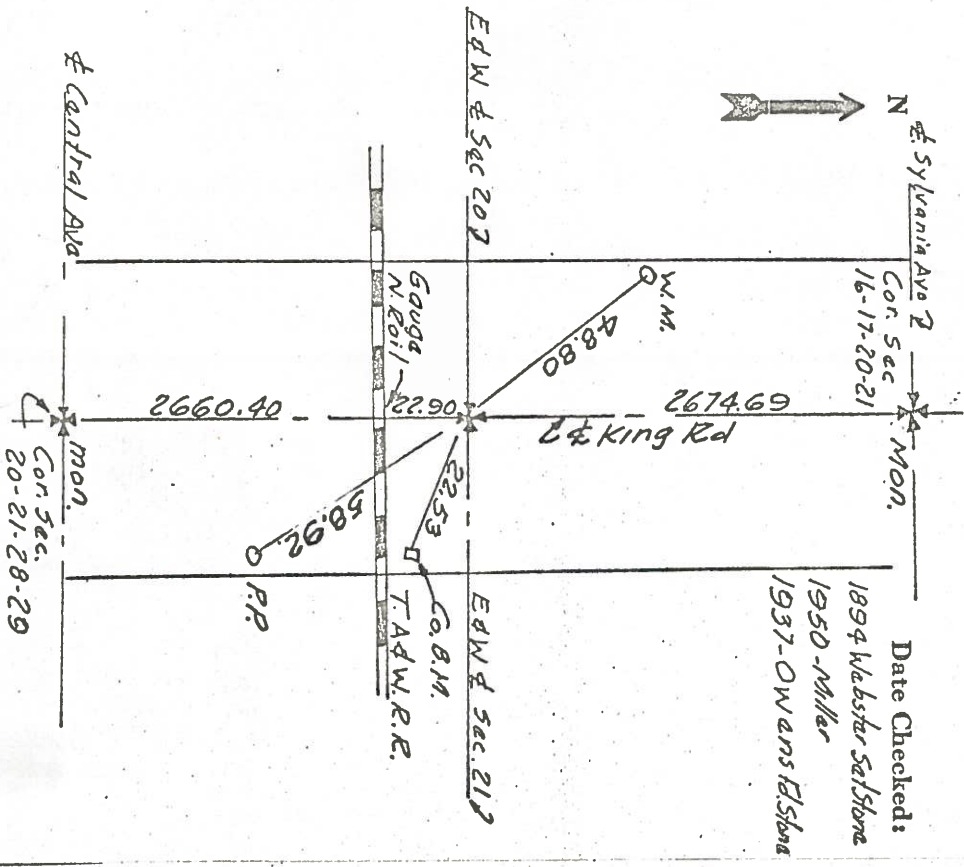
FOUND 4/6/1967 BY GOST

N. & S. Road King St. F. B. P.

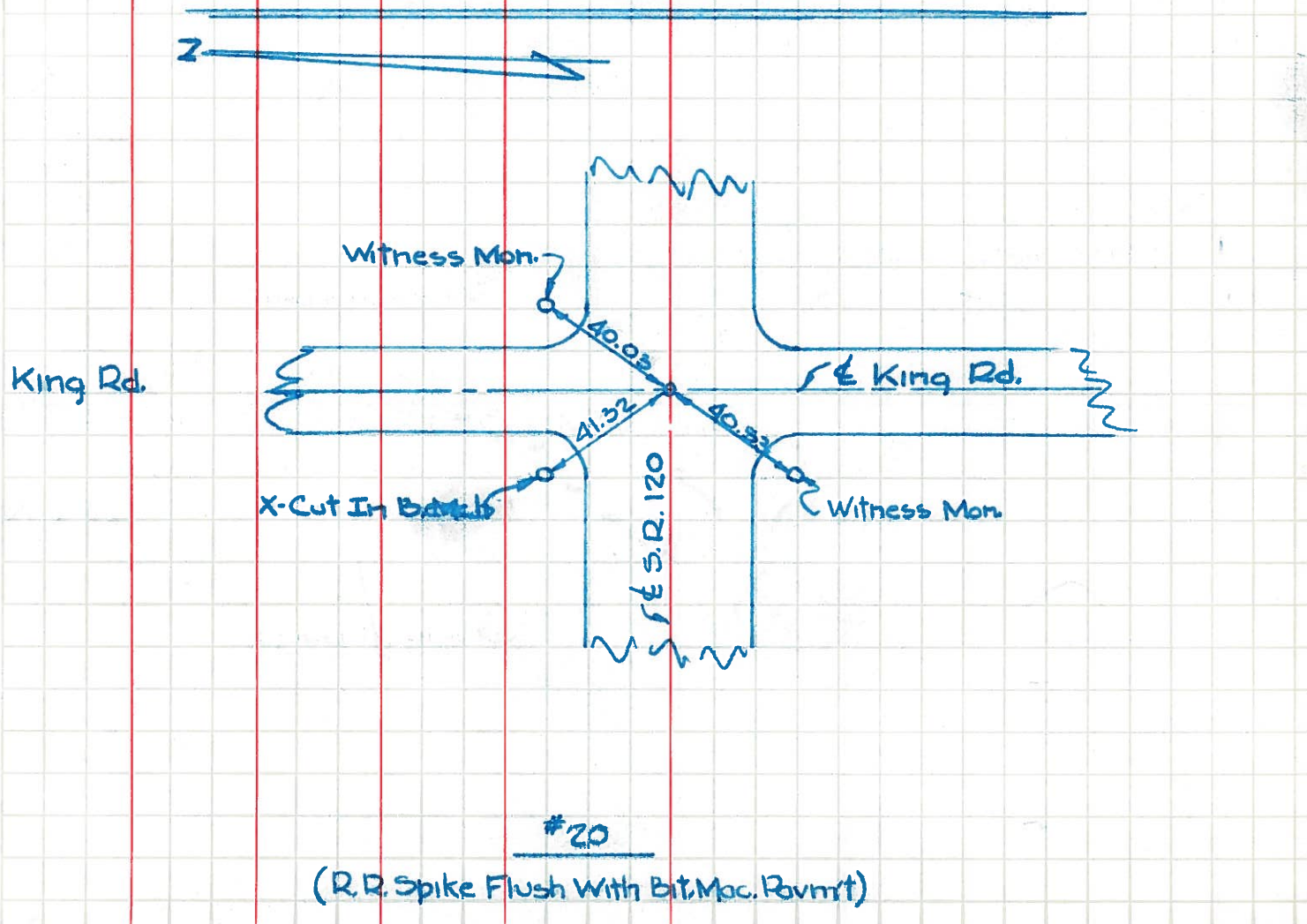
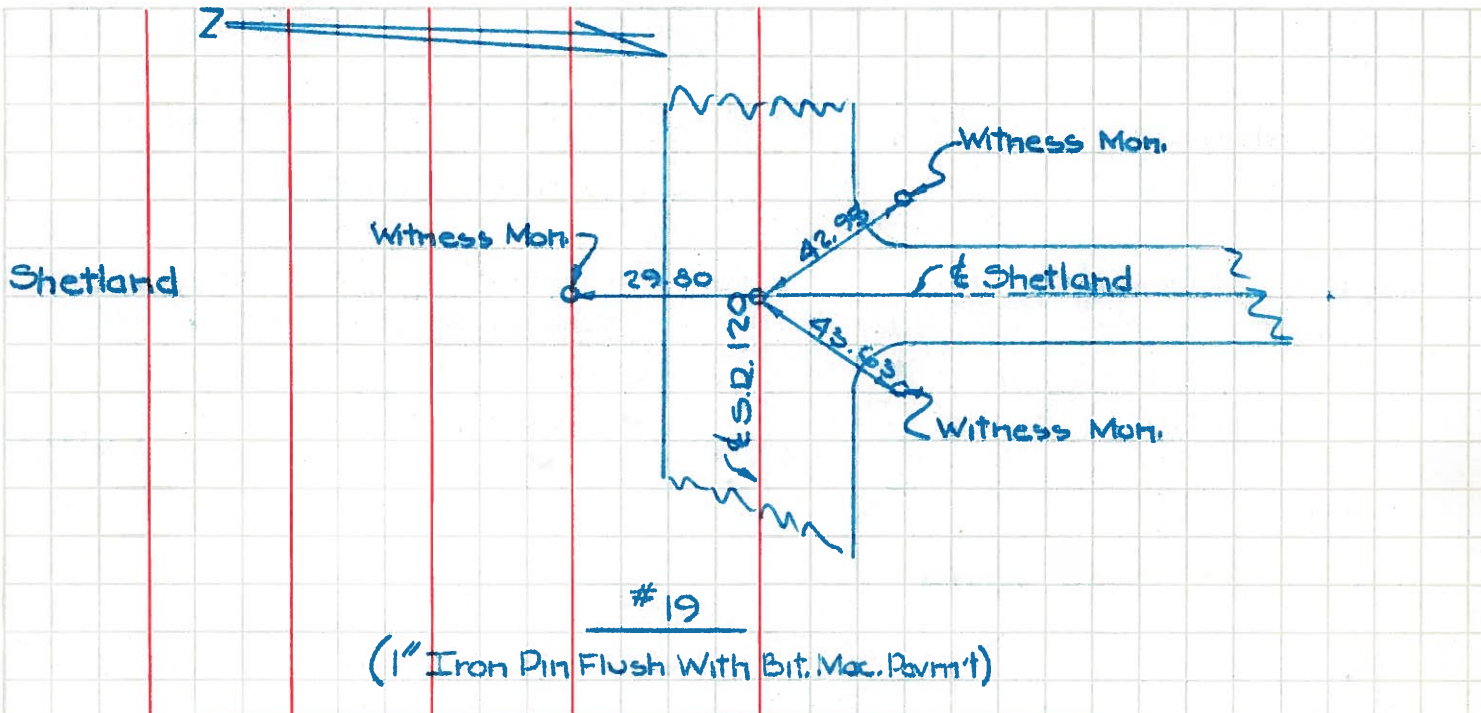
E. & W. Road 1/2 Mile S. of Sylvania Ave. F. B. P.

Sylvania Ave 2 16-17-20-21 MON. Date Checked:

1894 Webster Set Stone
1950 - Miller
1937 - Owens Et Stone



PERSONNEL	TITLE	PERSONNEL	TITLE	COUNTY	DATE
W. Denno				Lucas	Feb. 17, 1966
D. Curtis				U.S. 20	
F. Omev				120	Sunny-Cold
				SEC.	TEMP. 24°
DESCRIPTION: S.R. 120 (Central Ave) - Ref. Mon. & Control Points				JOB NO.	
LEFT		CENTER LINE		RIGHT	



PERSONNEL	TITLE	PERSONNEL	TITLE

COUNTY Lucas DATE 05-2-58

S. R. U.S. #70 WEATHER _____

SEC. _____ TEMP. _____

DESCRIPTION _____ LEFT _____ CENTER LINE _____ RIGHT _____ JOB NO. _____

DESCRIPTION	LEFT	CENTER LINE	RIGHT	JOB NO.
<p>27</p> <p>✓ 5/4 cor. sec. 20 E-6-E Nail Shethand Ed. (South) O.E. set RR. Set Dept. #61 Set RR Spk to surface 9/17/65</p>			<p>✓ S.E. to witness man. LU. Co. B.M. #112 42.9 ✓ N. to witness man. 29.8 ✓ W.S.W. to witness man. 42.59 45.5 ✓ N.W. to shiner in 24" oak 72.70</p>	
<p>✓ Int. King Ed. Brass plate set RR Dept. #62 O.E. Set RR Spk to surface 9/17/65</p>			<p>✓ N.W. to point of "U" in County B.M. 41.3 41.2 ✓ N.E. to witness man. 40.02 40.1 ✓ S.W. to shiner in T.P. 41.7 ✓ S.E. to + in pump island 63.38 62.5 ✓ S.W. to witness man. 40.4</p>	
<p>✓ 5/4 cor. sec. 21 E-6-E Brass plate O.E. set RR Dept. #63 Set RR Spk to surface 9/17/65</p>			<p>✓ N.W. to shiner in T.P. 41.86 ✓ S. to shiner in P.P. 24.6 ✓ N. to point of "U" in County B.M. #120 38.73 38.7 ✓ N.E. to shiner in 12" Box Elder 49.24 47.0</p>	
<p>✓ Int. McCord Rd. Brass plate - set RR Dept. #64 Set RR Spk to surface 9/17/65</p>			<p>✓ S.E. to point of "U" in County B.M. 50.1 ✓ S.W. to witness man. 42.9 ✓ N.W. to S.E. cor. of pump island ^{57.04} 41.2 ✓ N.E. to shiner in T.P. 46.9 ✓ New S.W. to shiner in P.P. 45.8 ✓ New S.E. to Near Cor. (see #65) 41.86</p>	
<p>5/4 cor. sec. 22 E-6-E Brass plate - set RR Dept. #65 Mott cut Rd + cut for Mott Rd on new overhead line</p>			<p>✓ N.W. to point of "U" in County B.M. #122 38.1 ✓ N.E. to witness man. (state B.M.) 97. ✓ S.E. to iron pipe in witness man. 40.8 ✓ S.W. to shiner P.P. 33.4 ✓ S. to shiner guard rail set 30.42 ✓ S.E. " " " " 32.03 ✓ S.W. " " " " 33.78</p>	

PERSONNEL TITLE PERSONNEL TITLE

COUNTY Lucas

DATE OK 5-2-58

S. R. U.S. #20

WEATHER

SEC.

TEMP.

DESCRIPTION

LEFT

CENTER LINE

RIGHT

JOB NO.

5/4 Cor. sec. 20 E-6-E
 Nail Shetland Ed. (South)
 O.K. set P.K. Set Bolt PK

27

#61

✓ S.E. to witness man. Lu. Co. B.M. #118 42.1
 ✓ N. to witness man. 29.8
 ✓ W.S.W. to witness man. 43.59 43.2
 ✓ W.N.W. to shiner in 24 oak 72.24 70.2

Int. King Ed.
 Brass plate - set P.K. Bolt PK
 O.K.

29

#62

✓ N.W. to point of "U" in County B.M. 47.3
 47.2
 ✓ N.E. to witness man. 40.02 40.1
 S.W. to shiner in P.P. 41.7
 ✓ S.E. to t in pump island 63.38 63.5
 ✓ S.W. to witness man 40.4

5/4 Cor. sec. 21 E-6-E.
 Brass plate
 O.K. set Bolt PK

#63

✓ N.W. to shiner in T.P. 41.86
 ✓ S. to shiner in P.P. 41.6
 ✓ N. to point of "U" in County B.M. #120 38.73
 38.67
 ✓ N.E. to shiner in 12" Box Elder 49.24 49.6

Int. McCord Ed.
 Brass plate - set P.K. Bolt PK

#64

✓ Cov. Broken off

✓ New
 ✓ New

S.E. to point of "U" in County B.M. 50.2
 S.W. to witness man. 42.96
 ✓ N.W. to S.E. Cor. of imp island 57.04 56.97
 N.E. to shiner in T.P. 46.2
 S.W. to shiner in P.P. 45.88
 S.E. to Near Carbond Rd Sign Post 41.86

5/4 Cor. sec. 22 E-6-E.
 Brass plate - set P.K.
 Mo + Sat Rd

#65

Ed.

+ cut for Moffat Rd on New overhead

N.W. to point of "U" in County B.M. #222 38.7
 N.E. to witness man. (state R/W man) 97.4
 S.E. to iron pipe in witness man. 40.92
 S.W. to shiner P.P. 33.1
 S to shiner guard Rail Post 30.42
 S.E. " " " 32.03