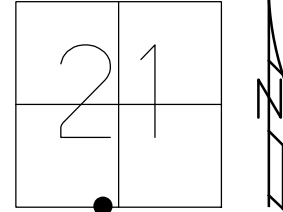


O.D.O.T. DISTRICT 2 SURVEY OFFICE (USE ONLY)

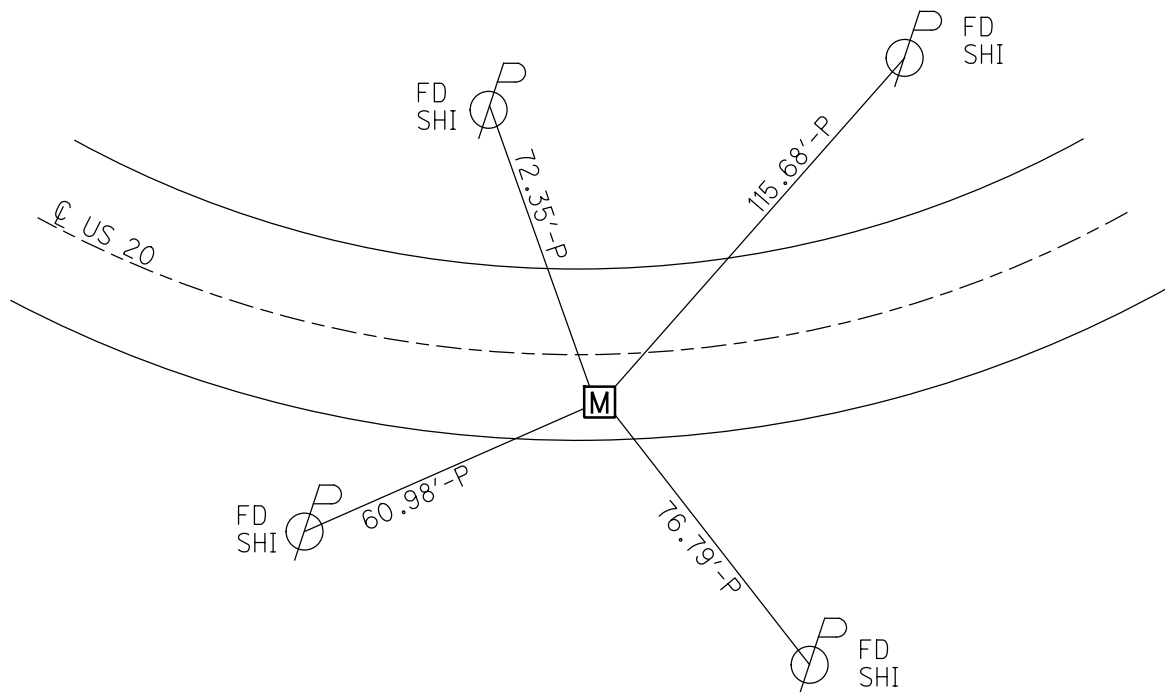
PERSONNEL _____ REFERENCE NO. 31 SHEET 7 OF 15
 NOTES NUHFER DATE 8/14/07 ROUTE US 20
 H.C. HUSS WEATHER CLOUDY COUNTY LUCAS
 R.C. MOSER TEMP. 70° TOWNSHIP SYLVANIA
 DWG BY MILLER PID 102808 SECTION 21
 T 9 N R 6 E

TYPE MONUMENT MONBOX W/ 1" IPIN
 ON SURFACE - ~~BELOW~~ ON
 OFFSET 16' TO RT. EDGE PAVEMENT
 OFFSET 13' ET : RT
 STATION: 454+00.58



HORZ. DATUM: NAD83(2011) GEOID: 2012A
 GRID: NORTHING: 733527.621 EASTING: 1637173.265

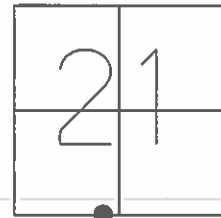
RECORD:
 FD MONBOX
 W/ 1" IPIN
 7-08-98, CAL
 FD MONBOX
 W/ 1" IPIN
 REF31
 4-24-18, JFO
 RAISED BOX
 10-1-18, JFO



O.D.O.T. DISTRICT 2 SURVEY OFFICE (USE ONLY)

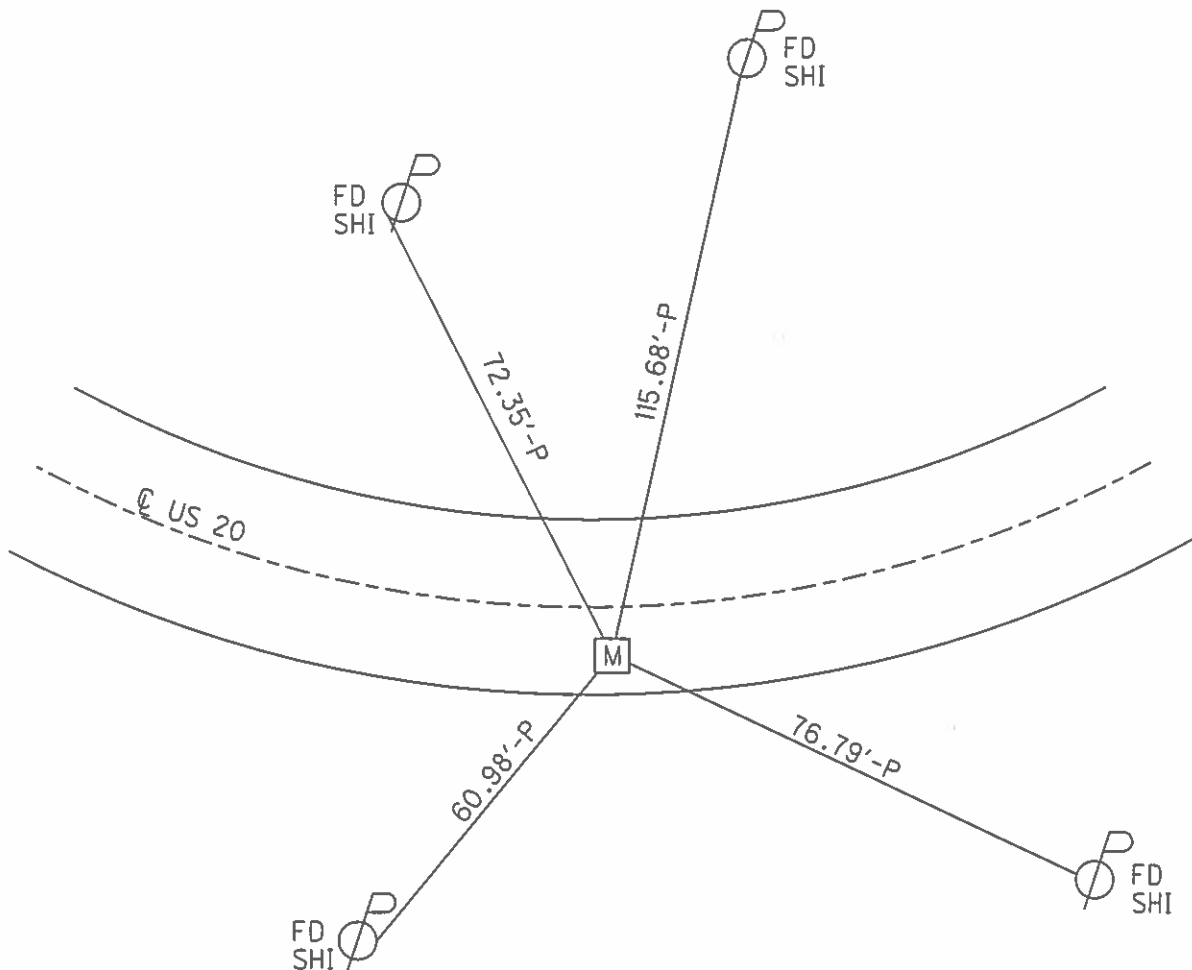
PERSONNEL _____ REFERENCE NO. 31 SHEET 7 OF 11
 NOTES NUHFER DATE 8/14/07 ROUTE US 20
 H.C. HUSS WEATHER CLOUDY COUNTY LUCAS
 R.C. MOSER TEMP. 70° TOWNSHIP SYLVANIA
 _____ SECTION 21
 _____ T9 S R6 E

TYPE MONUMENT 1" IPIN MON. BOX
 ON SURFACE - BELOW _____ ON _____
 LEFT - ☉ PAV'T - RIGHT 13'
16' TO RT EDGE PAVEMENT
 S.L.M. 454+00.58



GRID: NORTHING: 733527.60 EASTING: 1637173.21

RECORD:
 FD 1" IPIN MON. BOX
 7/08/98, CAL



O.D.O.T. DISTRICT 2 SURVEY OFFICE (USE ONLY)

PERSONNEL _____

REFERENCE NO. 31

SHEET 7 OF 11

NOTES NUHFER

DATE 08-14-07

ROUTE SR 20

H.C. HUSS

WEATHER CLOUDY

COUNTY LUCAS

R.C. MOSER

TEMP. +70°

TOWNSHIP SYLVANIA

SECTION 21

T 9 S R 6 E

TYPE MONUMENT 1" I.P. MON. BOX

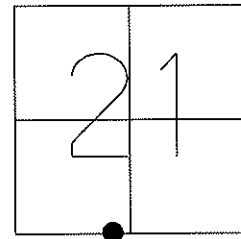
ON SURFACE - ~~BELOW~~ ON SURFACE

LEFT - C PAV'T - ~~RIGHT~~ 13' LT.

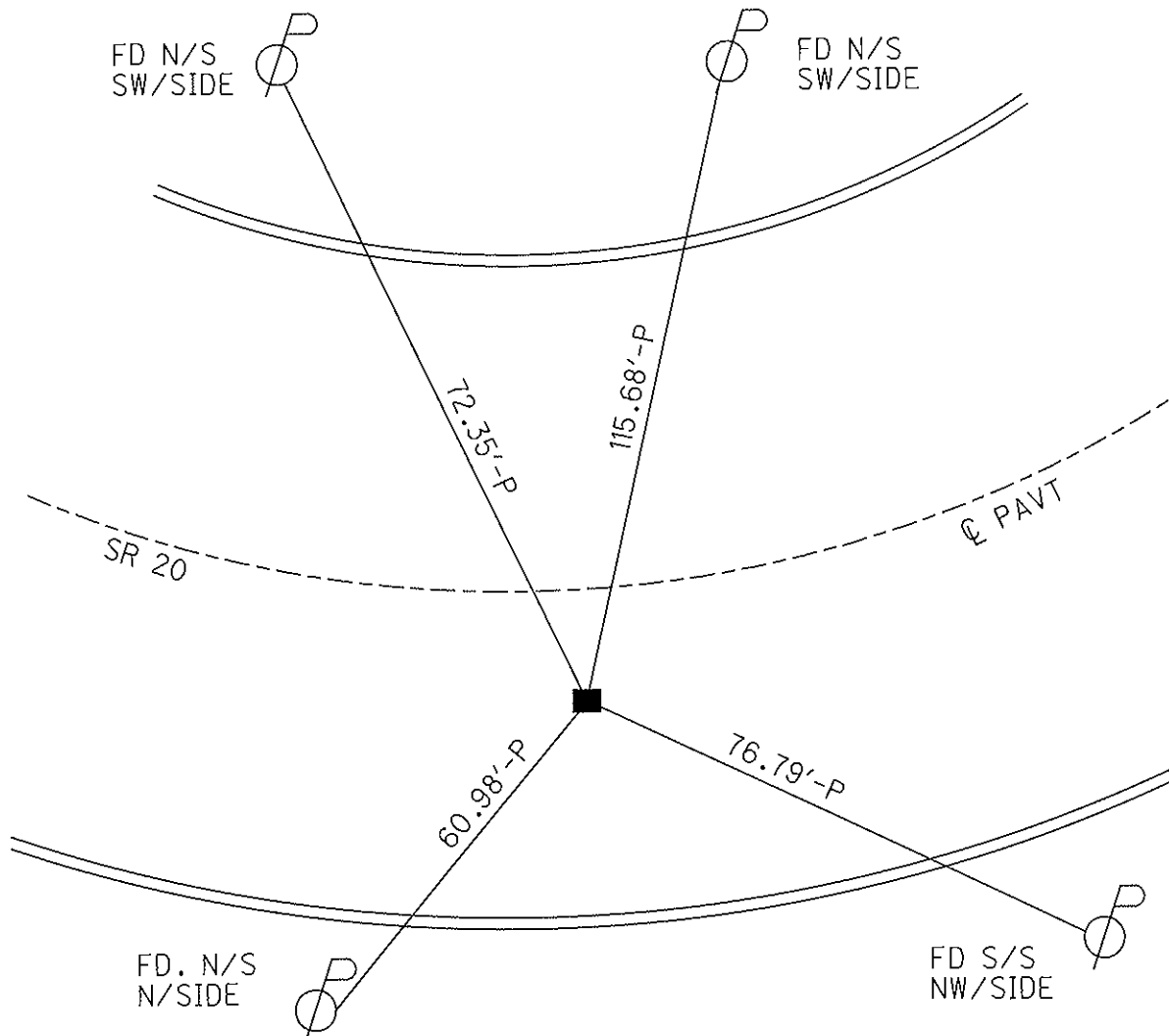
16' TORT. EDGE PAVEMENT

S.L.M. 454+00.58

GPS Northing=733527.60 Easting=1637173.21



FD. 1" I.P. MON. BOX
07-08-98 CAL



PERSONNEL TITLE PERSONNEL TITLE

COUNTY LUCAS

DATE 4AUG71

D. CURTIS

D. STEVENS

S. R. U.S. 20

WEATHER CLOUDY

SEC.

TEMP. 65°±

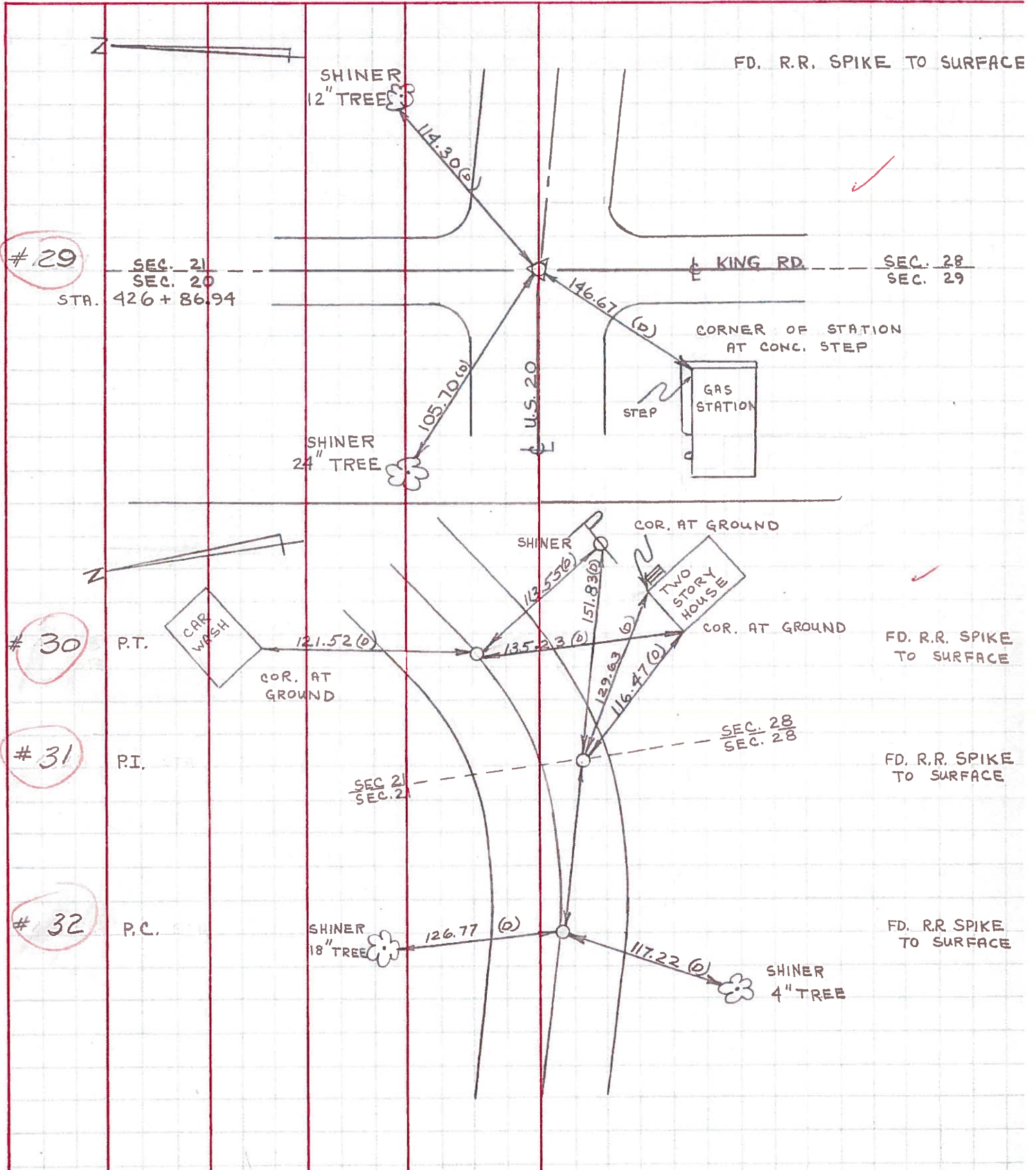
DESCRIPTION REFERENCES TO CONTROL POINTS

JOB NO.

LEFT

CENTER LINE

RIGHT



PERSONNEL	TITLE	PERSONNEL	TITLE	COUNTY	DATE	WEATHER	TEMP.
W. Denno				Lucas	Feb. 17, 1966	Sunny-Cold	24°
D. Curtis				US 20			
F. Omey				120			
DESCRIPTION				SEC.	JOB NO.		
S.R. 120 (Central Ave) - Ref Mon & Control Points							
LEFT		CENTER LINE		RIGHT			

