

O.D.O.T. DISTRICT 2 SURVEY OFFICE (USE ONLY)

PERSONNEL

REFERENCE NO. 33 A

SHEET 10 OF 15

NOTES NUHFER DATE 8/14/07  
 H.C. HUSS WEATHER CLOUDY  
 R.C. MOSER TEMP. 70°

ROUTE US 20  
 COUNTY LUCAS  
 TOWNSHIP SYLVANIA  
 SECTION 21

DWG BY MILLER PID 102808

T 9 N R 6 E

TYPE MONUMENT MONBOX W/3/4" IPIN

ON SURFACE - ~~BELOW~~ ON

OFFSET 0 PAVEMENT 17.8' LT : ~~RT~~

22.1' TO LT EDGE PAVEMENT

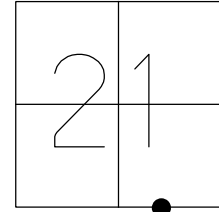
STATION: 463+00

HORZ. DATUM: NAD83(2011)

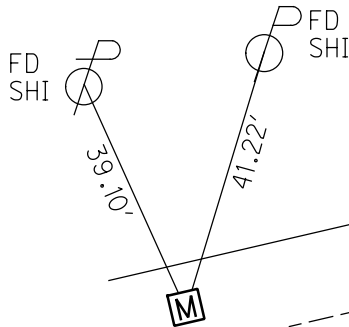
GEOID: 2012A

GRID: NORTHING: 733712.184

EASTING: 1638054.421



RES. #6953



☒ PERCENTUM RD

☒ SEQUOIA RD

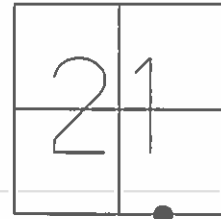
☒ US 20

RECORD:  
 FD MONBOX  
 W/ 1" IPIN  
 7-08-98, CAL  
 FD MONBOX  
 W/3/4" IPIN  
 REFA33  
 4-24-18, JFO  
 RAISED BOX  
 10-1-18, JFO

**O.D.O.T. DISTRICT 2 SURVEY OFFICE (USE ONLY)**

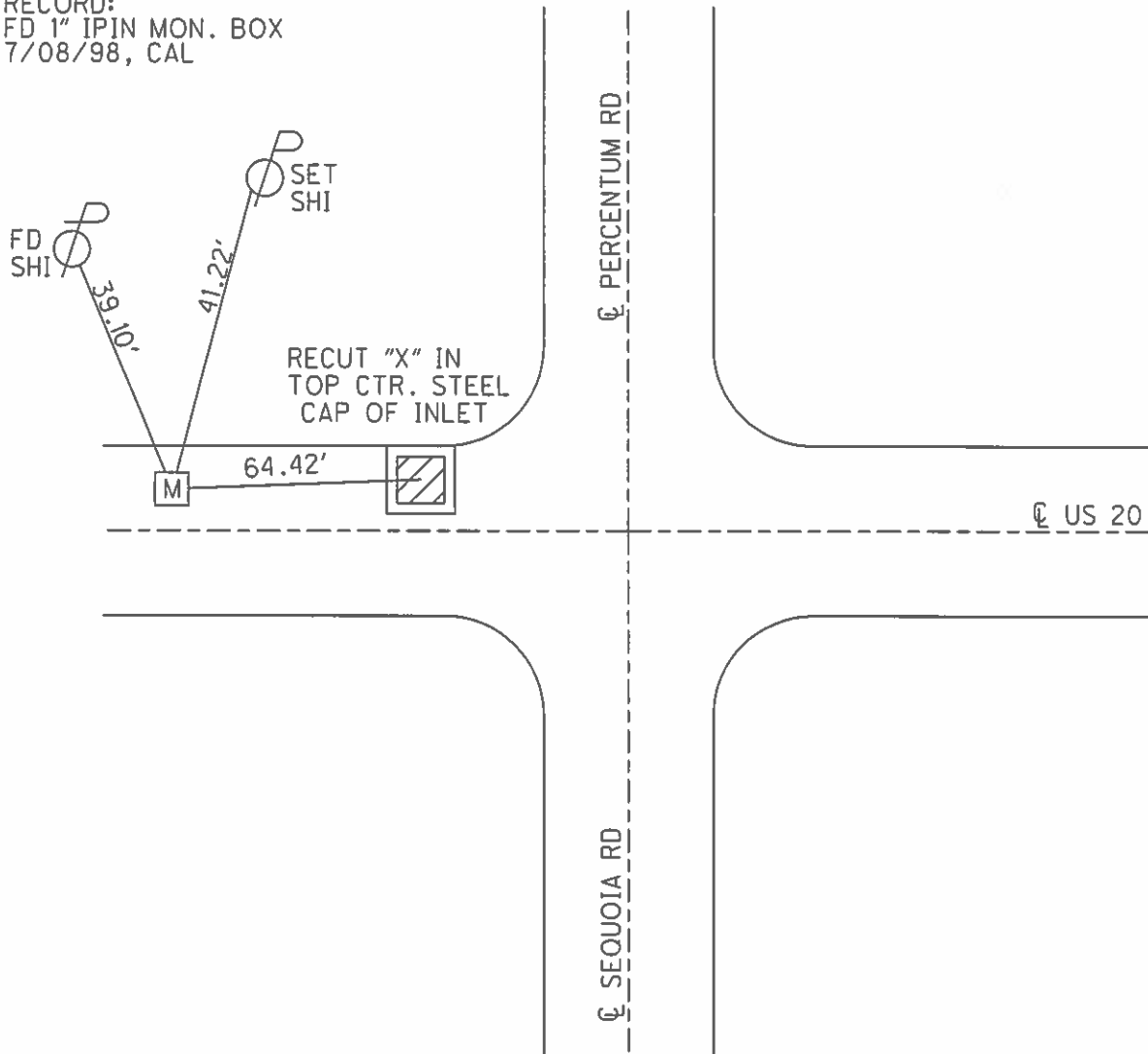
PERSONNEL	REFERENCE NO.	33A	SHEET	10 OF 11
NOTES	DATE	8/14/07	ROUTE	US 20
H.C. <u>NUHFER</u>	WEATHER	CLOUDY	COUNTY	LUCAS
R.C. <u>HUSS</u>	TEMP.	70°	TOWNSHIP	SYLVANIA
			SECTION	21
			T 9 S	R 6 E

TYPE MONUMENT 1" IPIN MON. BOX  
 ON SURFACE - BELOW ON  
 LEFT - C PAV'T - RIGHT 17.8'  
22.1' TO LT. EDGE PAVEMENT  
 S.L.M. 463+00



GRID: NORTHING: 733712.15 EASTING: 1638054.40

RECORD:  
 FD 1" IPIN MON. BOX  
 7/08/98, CAL



O.D.O.T. DISTRICT 2 SURVEY OFFICE (USE ONLY)

PERSONNEL \_\_\_\_\_

REFERENCE NO. 33A

SHEET 10 OF 11

NOTES NUHFER

DATE 08-14-07

ROUTE SR 20

H.C. HUSS

WEATHER CLOUDY

COUNTY LUCAS

R.C. MOSER

TEMP. +70°

TOWNSHIP SYLVANIA

SECTION 21

T 9 S R 6 E

TYPE MONUMENT 1" IP IN MON. BOX

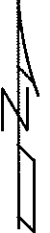
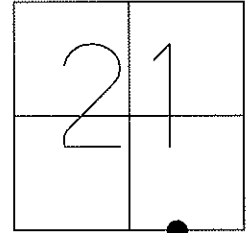
ON SURFACE - ~~BELOW~~ ON SURFACE

LEFT - C PAV'T - ~~RIGHT~~ 17.8 LT.

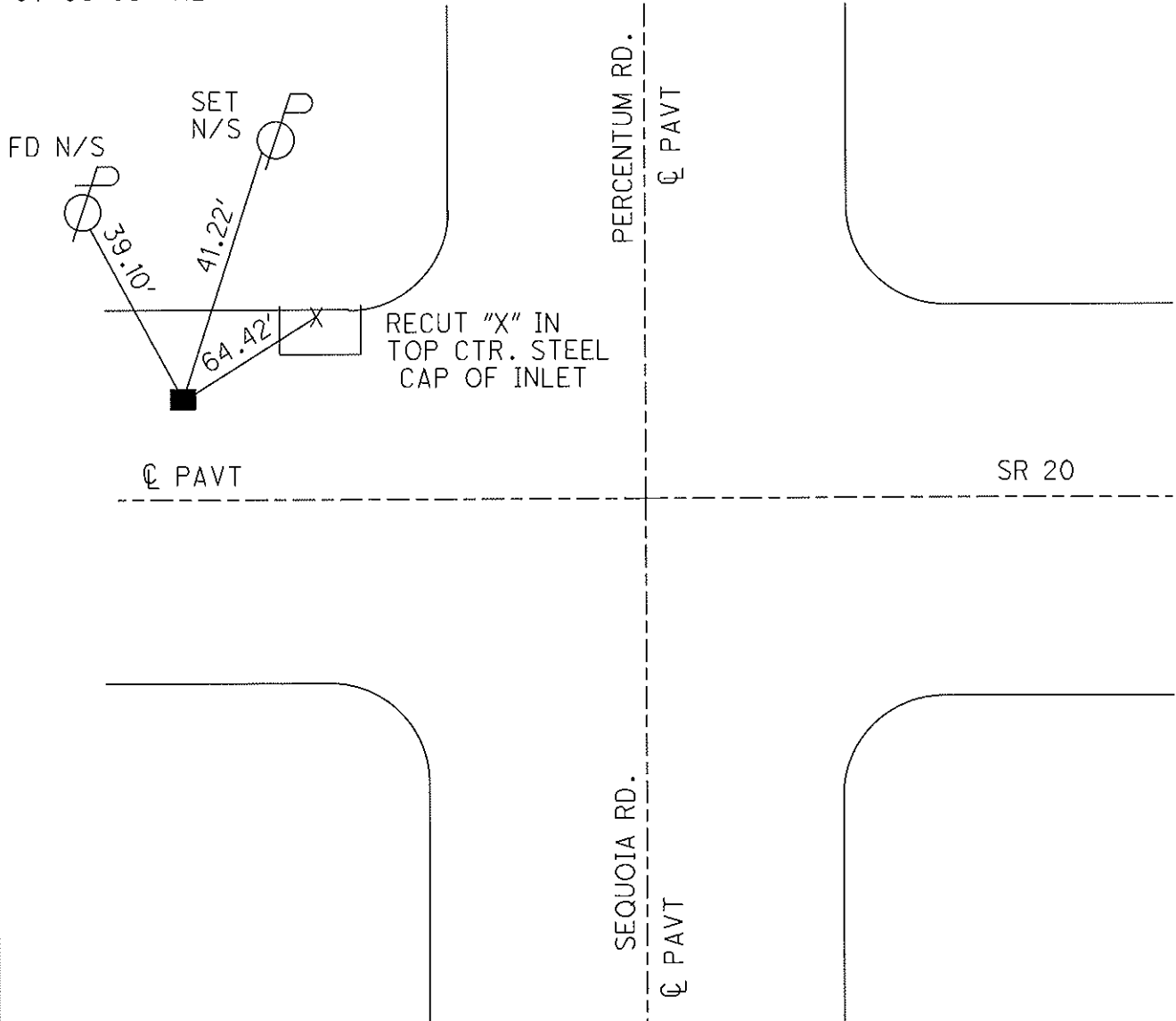
22.1' TO LT. EDGE PAVEMENT

S.L.M. 463+00

GPS Northing=733712.15 Easting=1638054.40



FD. 1" I.P. MON. BOX  
07-08-98 CAL



PERSONNEL TITLE PERSONNEL TITLE

COUNTY LUCAS

DATE 4 AUG 71

D. CURTIS

D. STEVENS

S. R. U.S. 20

WEATHER CLOUDY

SEC.

TEMP. 65 ±

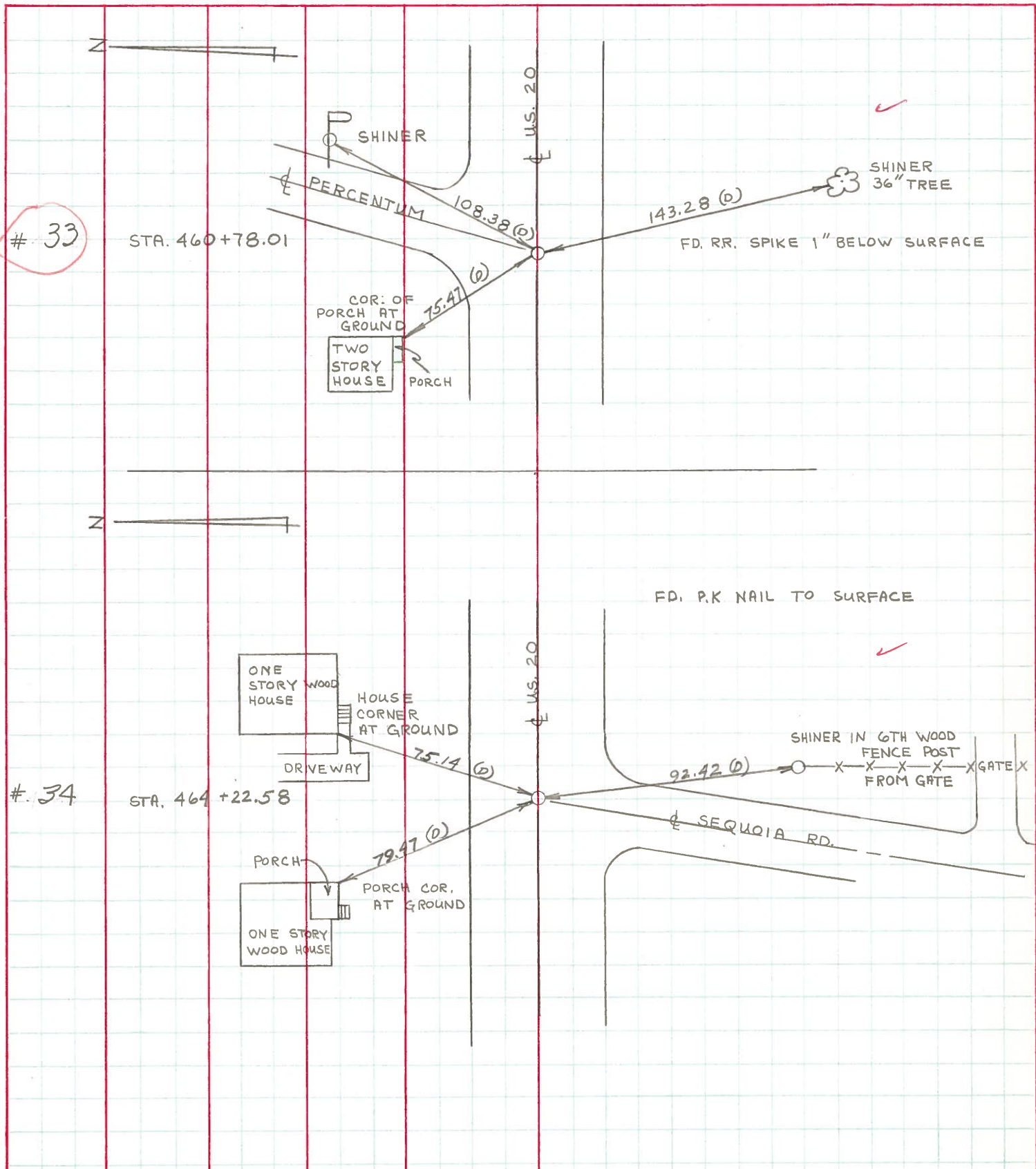
DESCRIPTION REFERENCES TO CONTROL POINTS

LEFT

CENTER LINE

RIGHT

JOB NO.



PERSONNEL TITLE PERSONNEL TITLE  
 W. Denno \_\_\_\_\_  
 D. Curtis \_\_\_\_\_  
 J. Teal \_\_\_\_\_  
 J. Brindley \_\_\_\_\_

COUNTY Lucas DATE May 20, 1968  
 S. R. 20 WEATHER mild  
 SEC. \_\_\_\_\_ TEMP. 50°±

DESCRIPTION U.S. 20 (Central Ave) - Ref. Mon. & Control Points LEFT CENTER LINE RIGHT JOB NO. 02994(a)

