

O.D.O.T. DISTRICT 2 SURVEY OFFICE (USE ONLY)

PERSONNEL

REFERENCE NO. 34

SHEET 11 OF 15

NOTES NUHFER  
 H.C. HUSS  
 R.C. MOSER

DATE 8/14/07  
 WEATHER CLOUDY  
 TEMP. 70°

ROUTE US 20  
 COUNTY LUCAS  
 TOWNSHIP SYLVANIA  
 SECTION 21  
 T 9 N R 6 E

DWG BY MILLER PID 102808

TYPE MONUMENT 5/8" IPIN MONBOX

ON SURFACE - ~~BELOW~~ ON

OFFSET  $\text{\textcircled{C}}$  PAVEMENT 17.8' LT : ~~RT~~

22.1' TO LT EDGE PAVEMENT

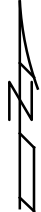
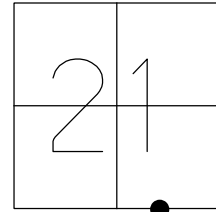
STATION: 464+23

HORZ. DATUM: NAD83(2011)

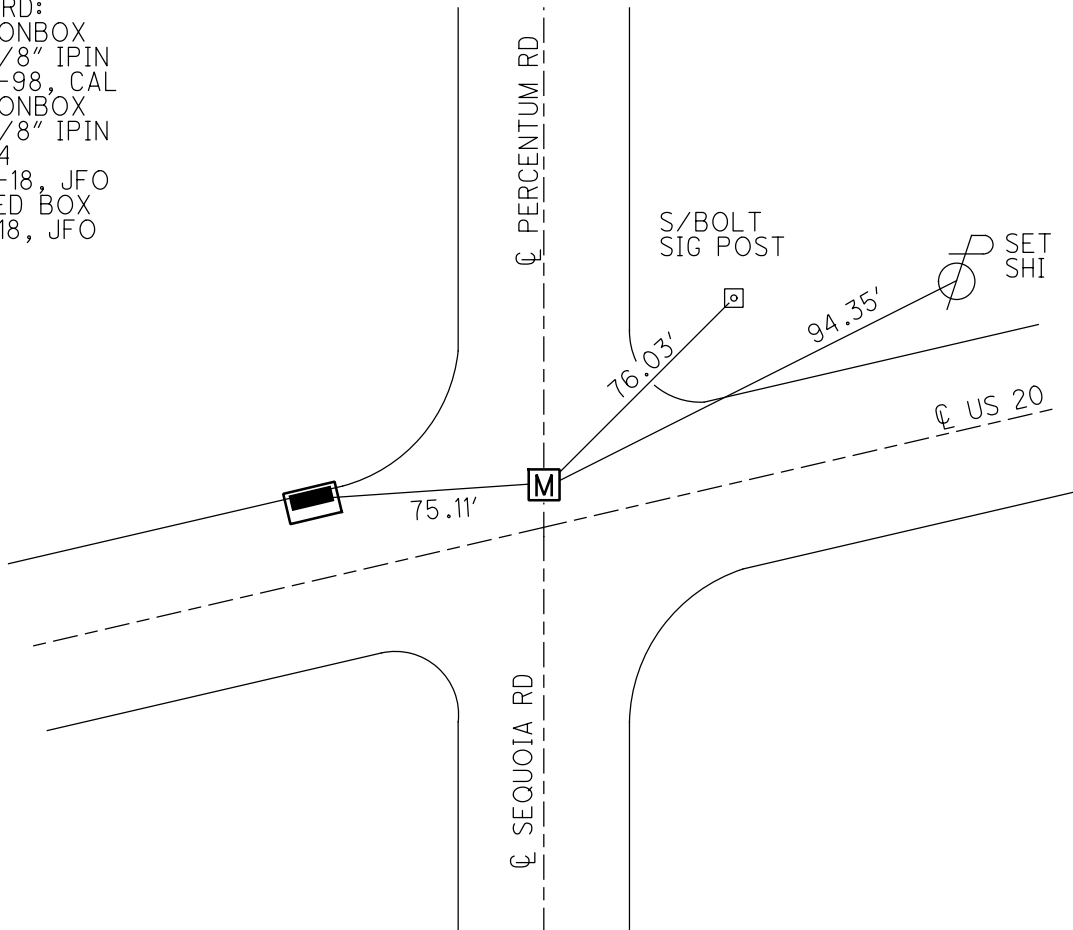
GEOID: 2012A

GRID: NORTHING: 733737.228

EASTING: 1638174.204



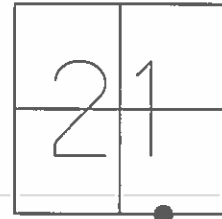
RECORD:  
 FD MONBOX  
 W/ 5/8" IPIN  
 7-08-98, CAL  
 FD MONBOX  
 W/ 5/8" IPIN  
 REF34  
 4-24-18, JFO  
 RAISED BOX  
 10-1-18, JFO



**O.D.O.T. DISTRICT 2 SURVEY OFFICE (USE ONLY)**

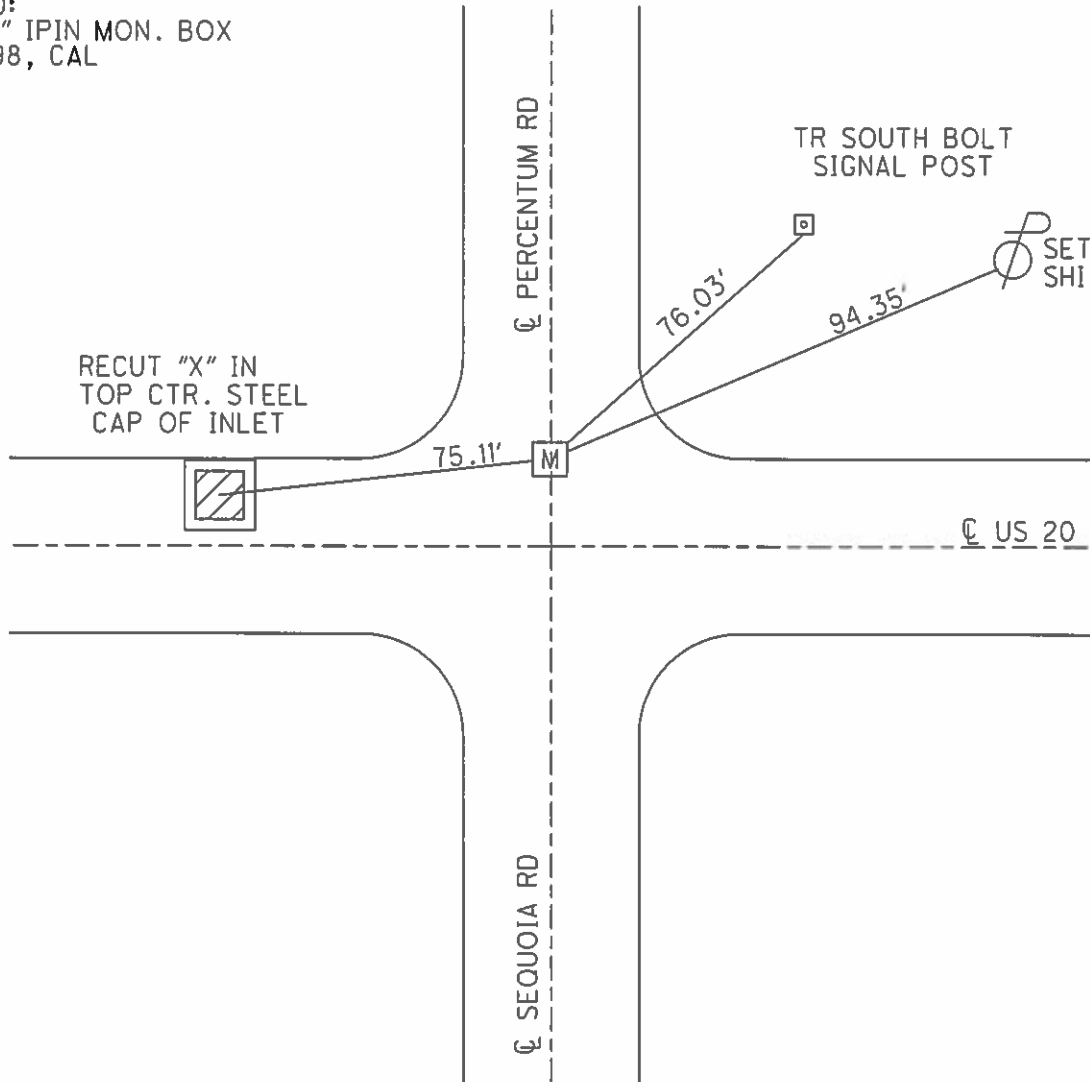
PERSONNEL	REFERENCE NO.	34	SHEET	11	OF	11
NOTES	NUHFER	DATE	8/14/07	ROUTE	US 20	
H.C.	HUSS	WEATHER	CLOUDY	COUNTY	LUCAS	
R.C.	MOSER	TEMP.	70°	TOWNSHIP	SYLVANIA	
				SECTION	21	
				T	9	S
				R	6	E

TYPE MONUMENT 5/8" IPIN MON. BOX  
 ON SURFACE - BELOW ON  
 LEFT - ☉ PAV'T - RIGHT 17.8'  
22.1' TO LT. EDGE PAVEMENT  
 S.L.M. 464+23



GRID: NORTHING: 733737.27 EASTING: 1638174.17

RECORD:  
 FD 5/8" IPIN MON. BOX  
 7/08/98, CAL



O.D.O.T. DISTRICT 2 SURVEY OFFICE (USE ONLY)

PERSONNEL

REFERENCE NO. 34

SHEET 11 OF 11

NOTES NUHFER

DATE 08-14-07

ROUTE SR 20

H.C. HUSS

WEATHER CLOUDY

COUNTY LUCAS

R.C. MOSE

TEMP. +70°

TOWNSHIP SYLVANIA

SECTION 21

T 9 S R 6 E

TYPE MONUMENT 5/8" IP IN MON. BOX

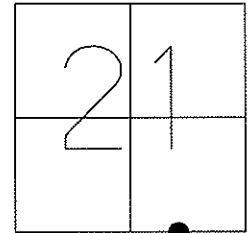
ON SURFACE - ~~BELOW~~ ON SURFACE

LEFT - C PAV'T - ~~RIGHT~~ 17.8 LT.

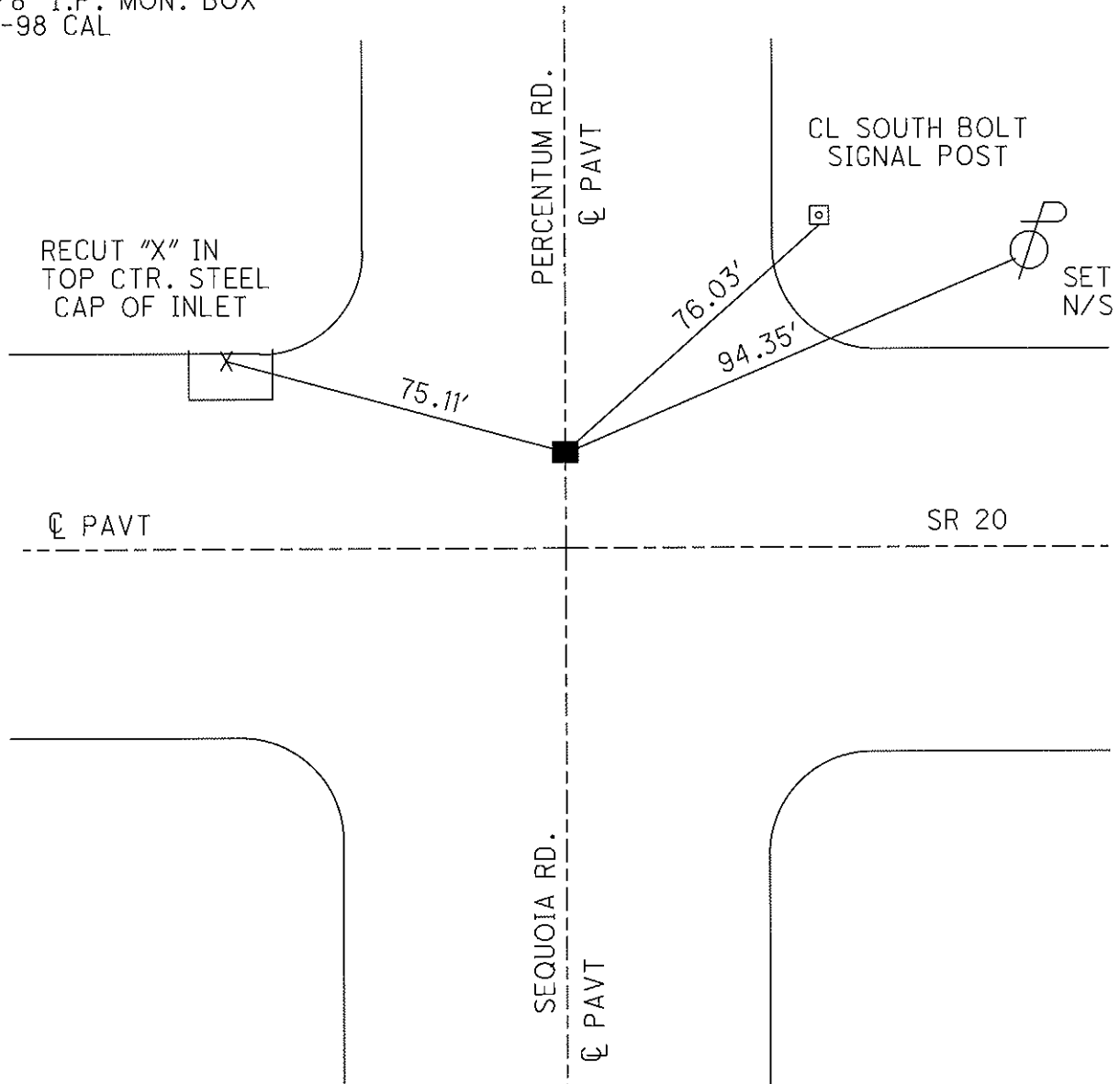
22.1' TO LT. EDGE PAVEMENT

S.L.M. 464+23

GPS Northing=733737.27 Easting=1638174.17



FD. 5/8" I.P. MON. BOX  
07-08-98 CAL



PERSONNEL TITLE PERSONNEL TITLE

D. CURTIS

COUNTY LUCAS

DATE 4 AUG 71

D. STEVENS

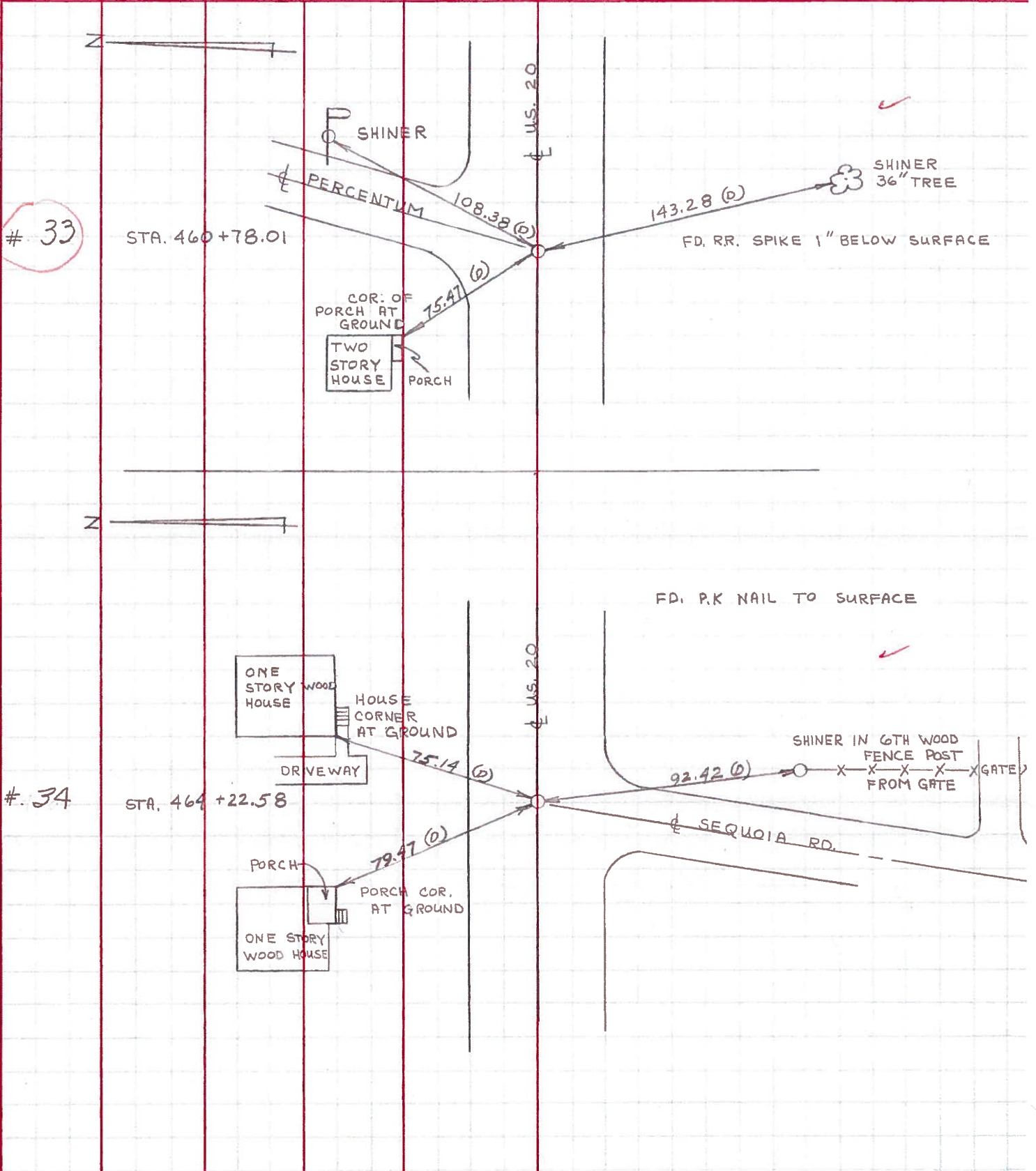
S. R. U.S. 20

WEATHER CLOUDY

SEC.

TEMP. 65 ±

DESCRIPTION REFERENCES TO CONTROL POINTS LEFT CENTER LINE RIGHT JOB NO.



PERSONNEL TITLE PERSONNEL TITLE

COUNTY Lucas DATE May 20, 1968

W. Benno \_\_\_\_\_

S. R. 20 WEATHER mild

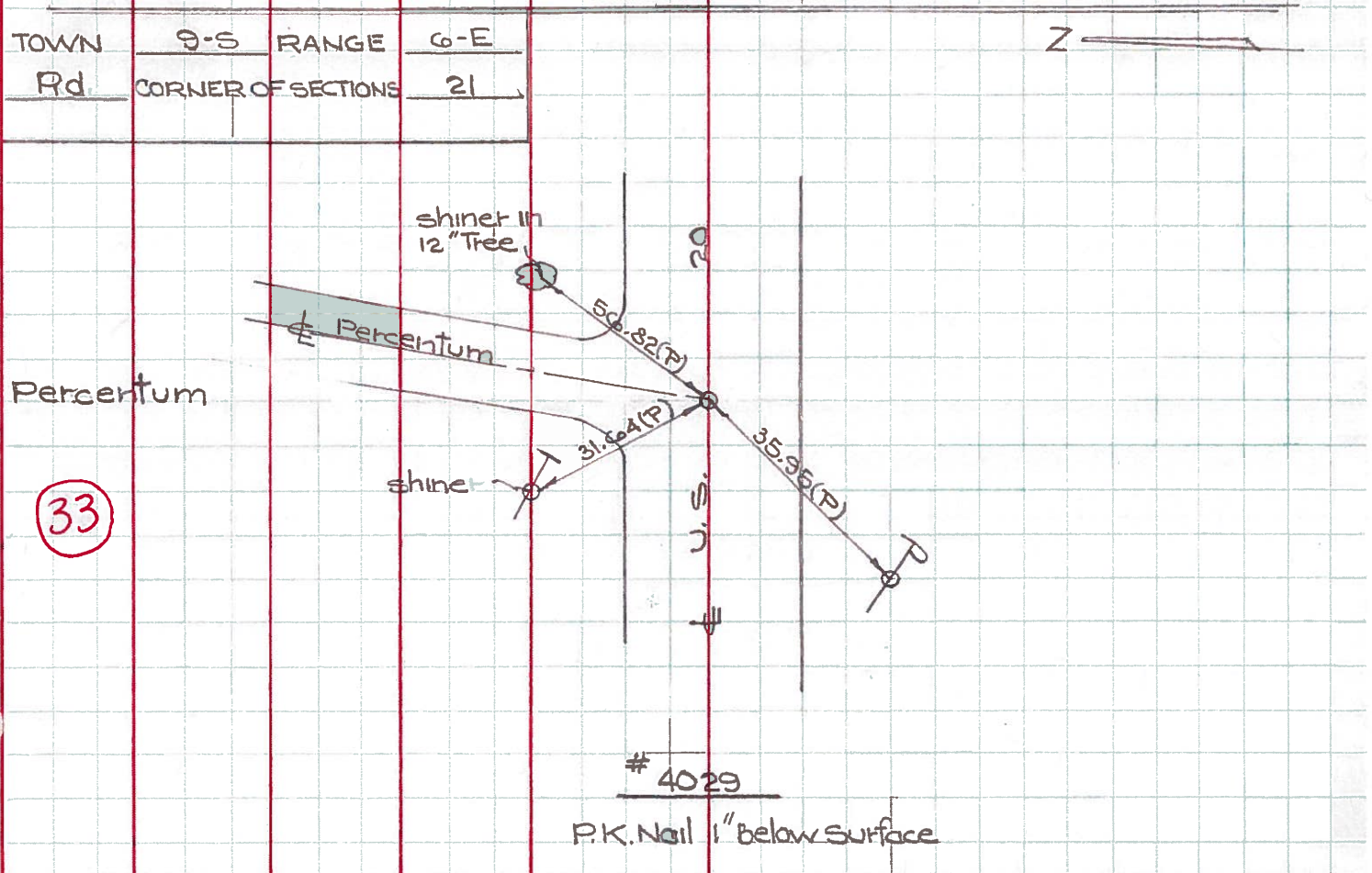
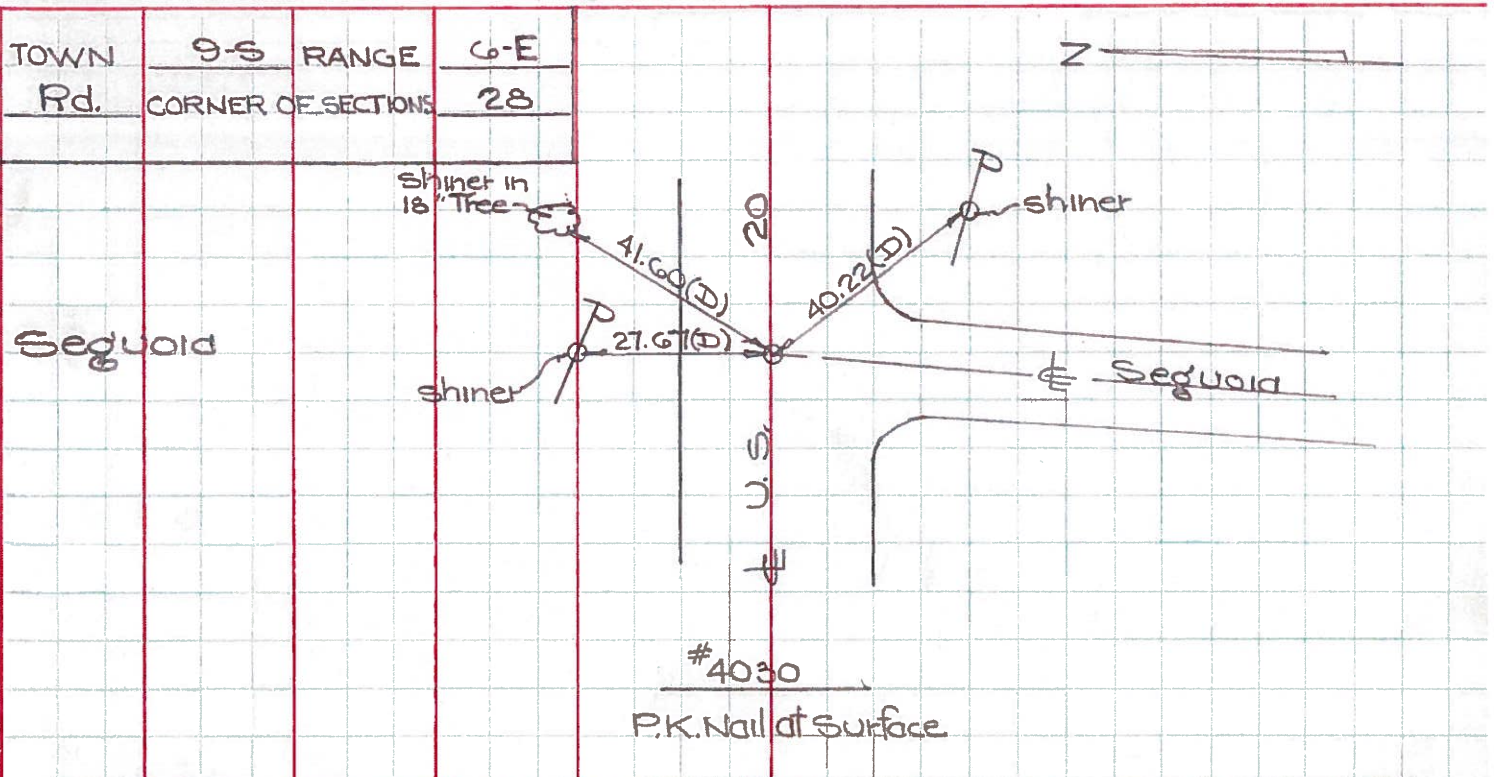
D. Curtis \_\_\_\_\_

J. Teal \_\_\_\_\_

SEC. \_\_\_\_\_ TEMP. 50°F

J. Brindley \_\_\_\_\_

DESCRIPTION U.S. 20 (Central Ave) - Ref. Mon. & Control Points JOB NO. 02994(a)



33