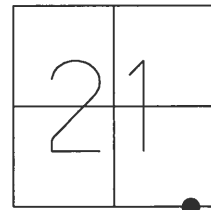


O.D.O.T. DISTRICT 2 SURVEY OFFICE (USE ONLY)

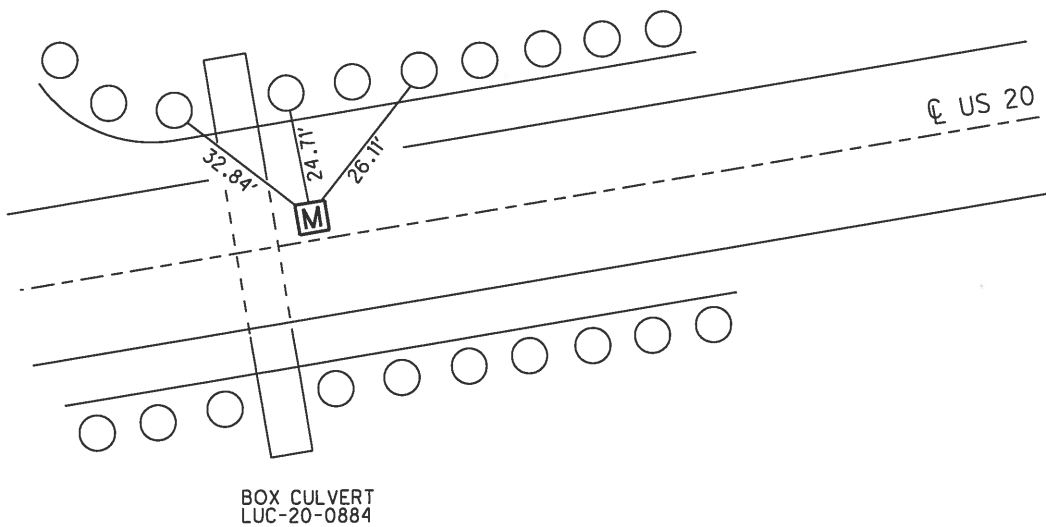
PERSONNEL _____ REFERENCE NO. 34 A SHEET 12 OF 15
NOTES LOEHRKE DATE 7/8/98 ROUTE US 20
H.C. CANTERBURY WEATHER DAMP COUNTY LUCAS
R.C. HELM TEMP. 80° TOWNSHIP SYLVANIA
SECTION 21
DWG BY MILLER PID 102808 T 9 N R 6 E

TYPE MONUMENT _____ MONBOX _____
~~ON SURFACE - BELOW~~ _____ ON _____
OFFSET \odot PAVEMENT _____ 17.5' ~~LT: RT~~
13' TO LT EDGE PAVEMENT
STATION: _____ 468+00



HORIZ. DATUM: NAD83(2011) GEOID: 2012A
GRID: NORTHING: 733814.600 EASTING: 1638543.774

RECORD:
FD MONBOX
7-8-98, CL
FD MONBOX
4" DOWN
COULD NOT OPEN
SHOT CTR OF LID
REFA35
4-24-18, JFO
DNF
10-1-18, JFO



O.D.O.T. DISTRICT 2 SURVEY OFFICE

PERSONNEL _____

REFERENCE NO. 34A

SHEET 19 OF 27

NOTES LOEHRKE

H.C. CANTERBURY

R.C. HELM

DATE 7-8-98

WEATHER DAMP

TEMP. +80

ROUTE U.S. 20

COUNTY LUCAS

TOWNSHIP SYLVANIA

SECTION 21

T. _____ R. _____

TYPE MONUMENT MON Box

~~ON~~ SURFACE - BELOW Yes

LEFT-Q PAVT. - ~~RIGHT~~ ±17.5 Lt

±13' TO Lt EDGE PAVEMENT

S.L.M. 468+00 ⇒ ± 1/4 mile West of McCorn Rd.

