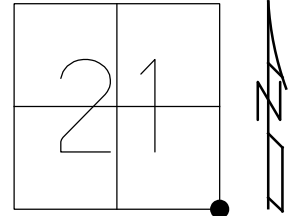


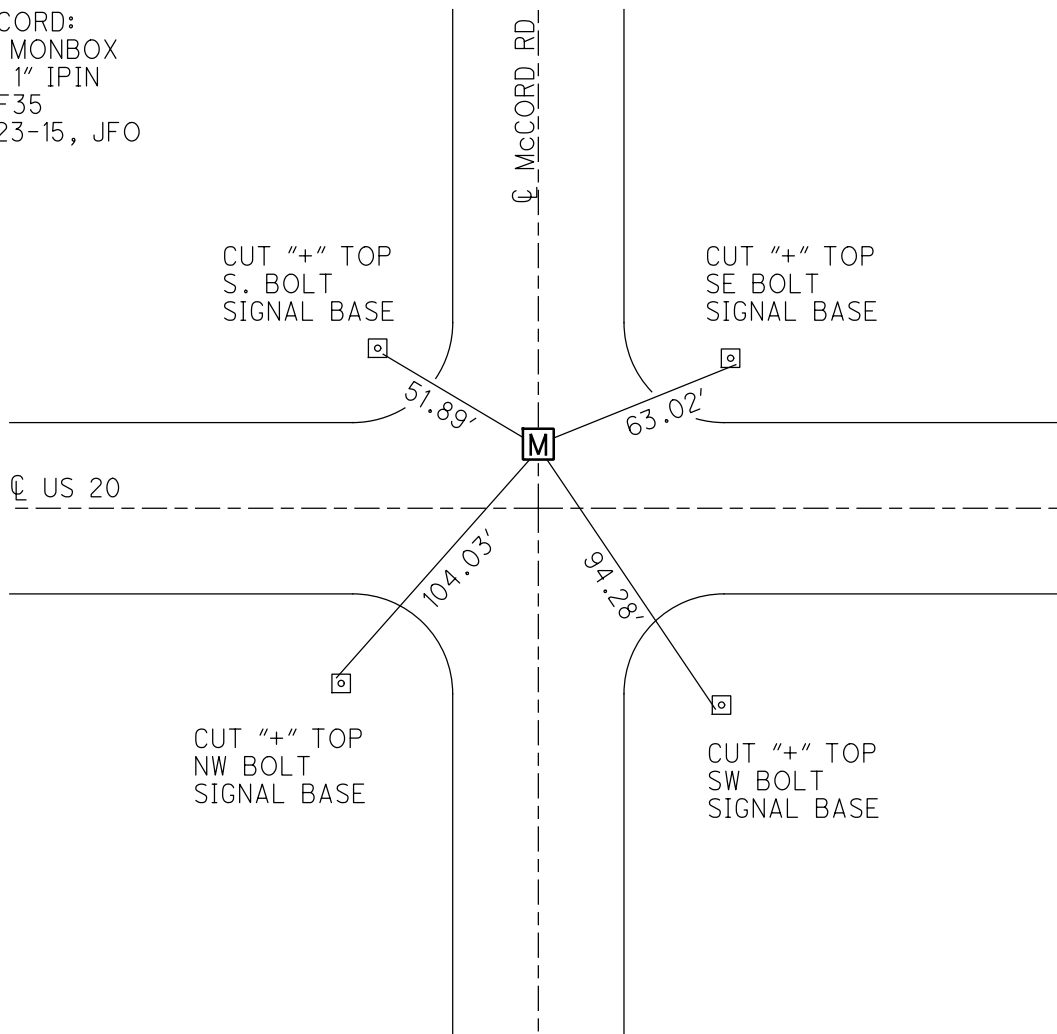
O.D.O.T. DISTRICT 2 SURVEY OFFICE (USE ONLY)

PERSONNEL _____ REFERENCE NO. 35 SHEET 15 OF 15
 NOTES LOEHRKE DATE 7/8/98 ROUTE US 20
 H.C. HUSS WEATHER HUMID COUNTY LUCAS
 R.C. CANTERBURY TEMP. 78° TOWNSHIP SYLVANIA
 DWG BY MILLER PID 88252 SECTION 21
 T 9 N R 6 E

TYPE MONUMENT _____ MONBOX _____
 ON SURFACE - ~~BELOW~~ _____ ON _____
 OFFSET \bar{C} PAVEMENT 25' LT : ~~RT~~ _____
 - - TO - - EDGE PAVEMENT _____
 STATION: 481+12 _____
 HORZ.DATUM: NAD83(2011) GEOID: 2012A
 GRID: NORTHING: 734083.475 EASTING: 1639828.110



RECORD:
 FD MONBOX
 W/ 1" IPIN
 REF35
 7-23-15, JFO



O.D.O.T. DISTRICT 2 SURVEY OFFICE

PERSONNEL

REFERENCE NO. 35

SHEET 22 OF 27

NOTES C. LOEHEKE

H.C. T. RUSOS

DATE 7-8-98

ROUTE U.S. 20

R.C. M. CANTERBURY

WEATHER Humid

COUNTY LUCAS

TEMP. +78

TOWNSHIP SYLVANIA

SECTION 22

T. R.

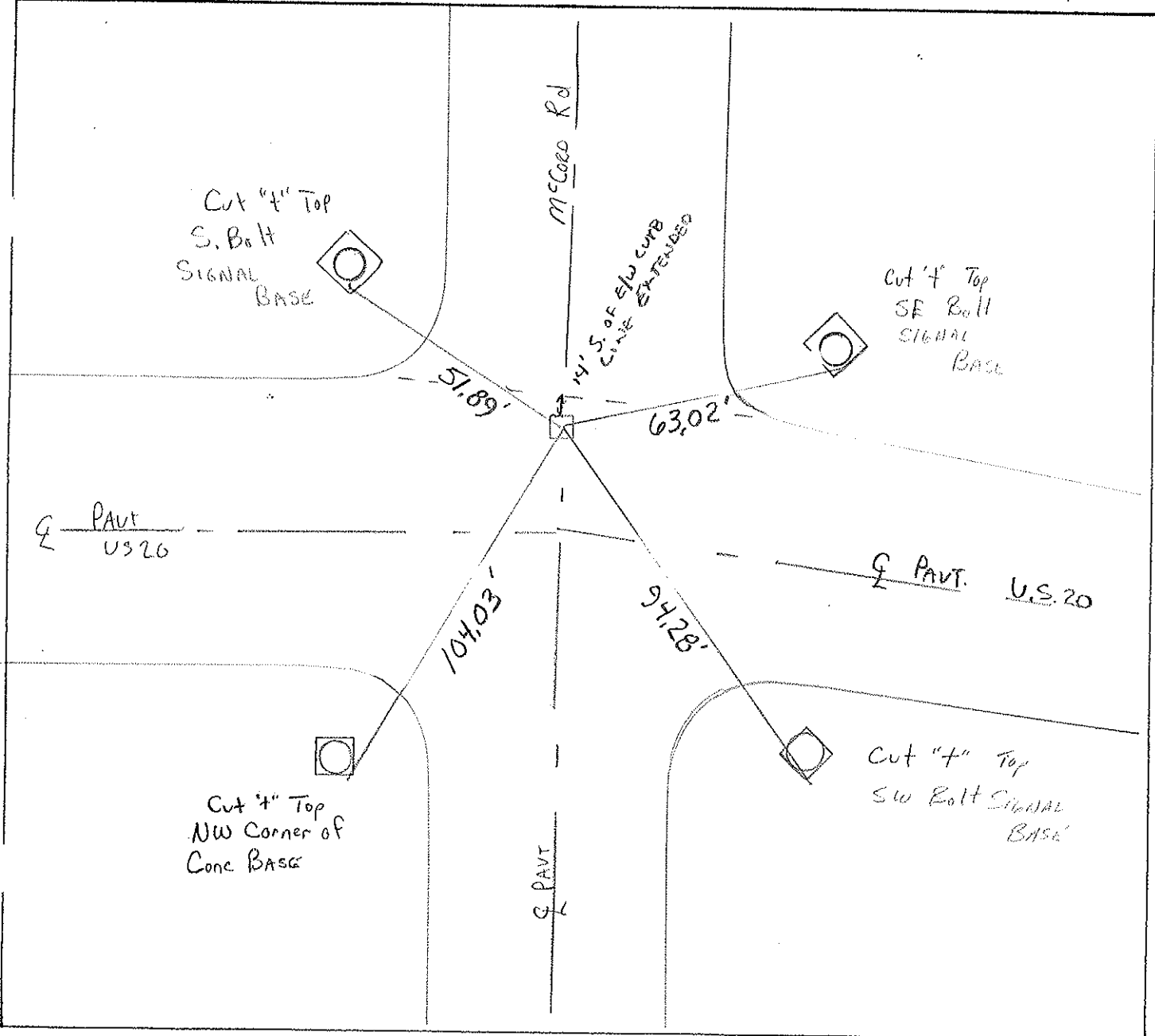
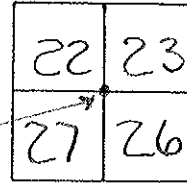
TYPE MONUMENT Mon Box

ON SURFACE - BELOW Yes

LEFT- PAV'T. - RIGHT ±25' Lt

 TO EDGE PAVEMENT

S.L.M. 481+12



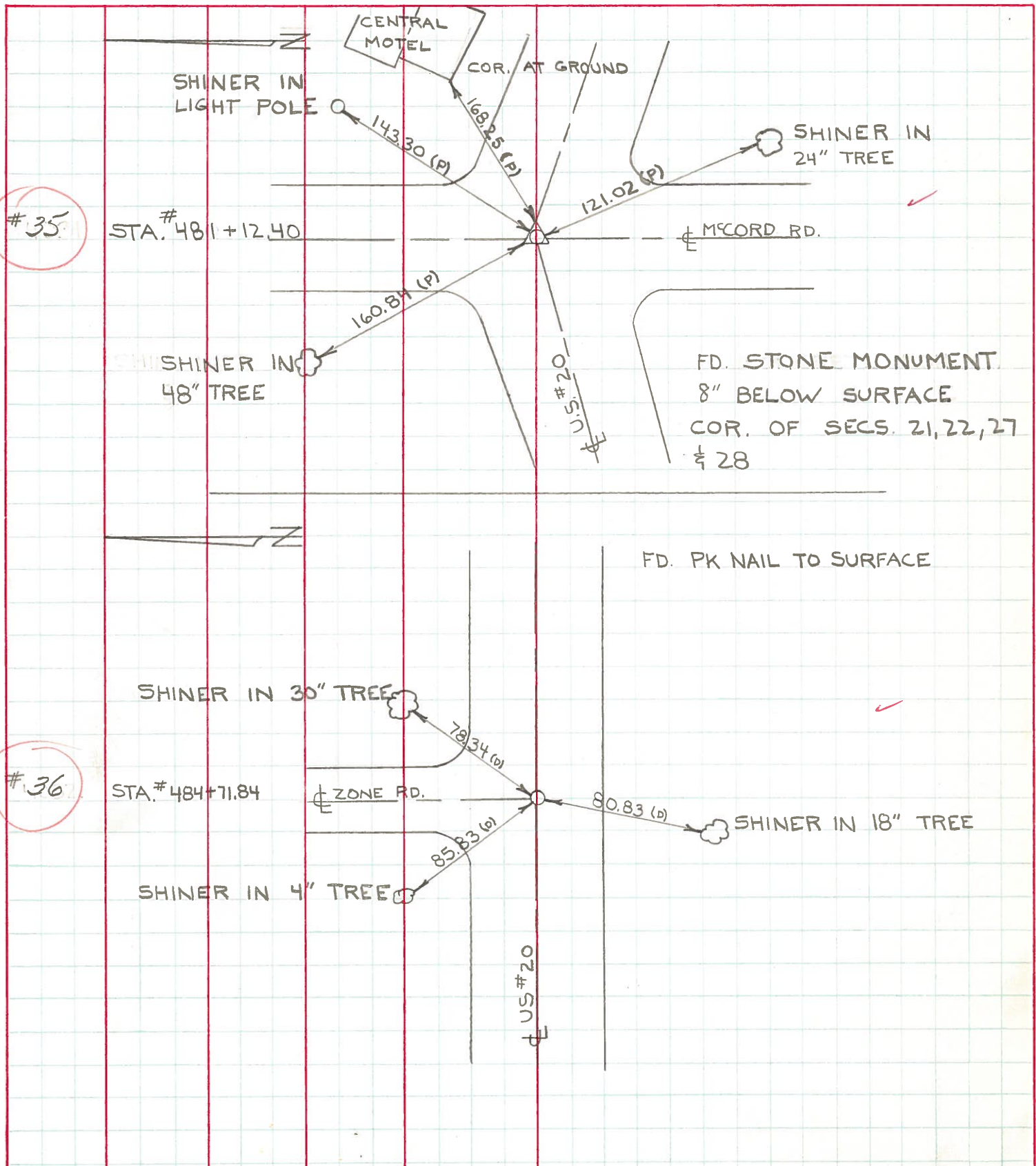
PERSONNEL TITLE PERSONNEL TITLE
 D. CURTIS _____
 D. STEVENS _____
 R. BRANNAN _____

COUNTY LUCAS DATE AUGUST 6, 1971

S. R. U.S. #20 WEATHER SUNNY

SEC. _____ TEMP. 75±

DESCRIPTION REFERENCES TO CONTROL POINTS JOB NO.
 LEFT CENTER LINE RIGHT



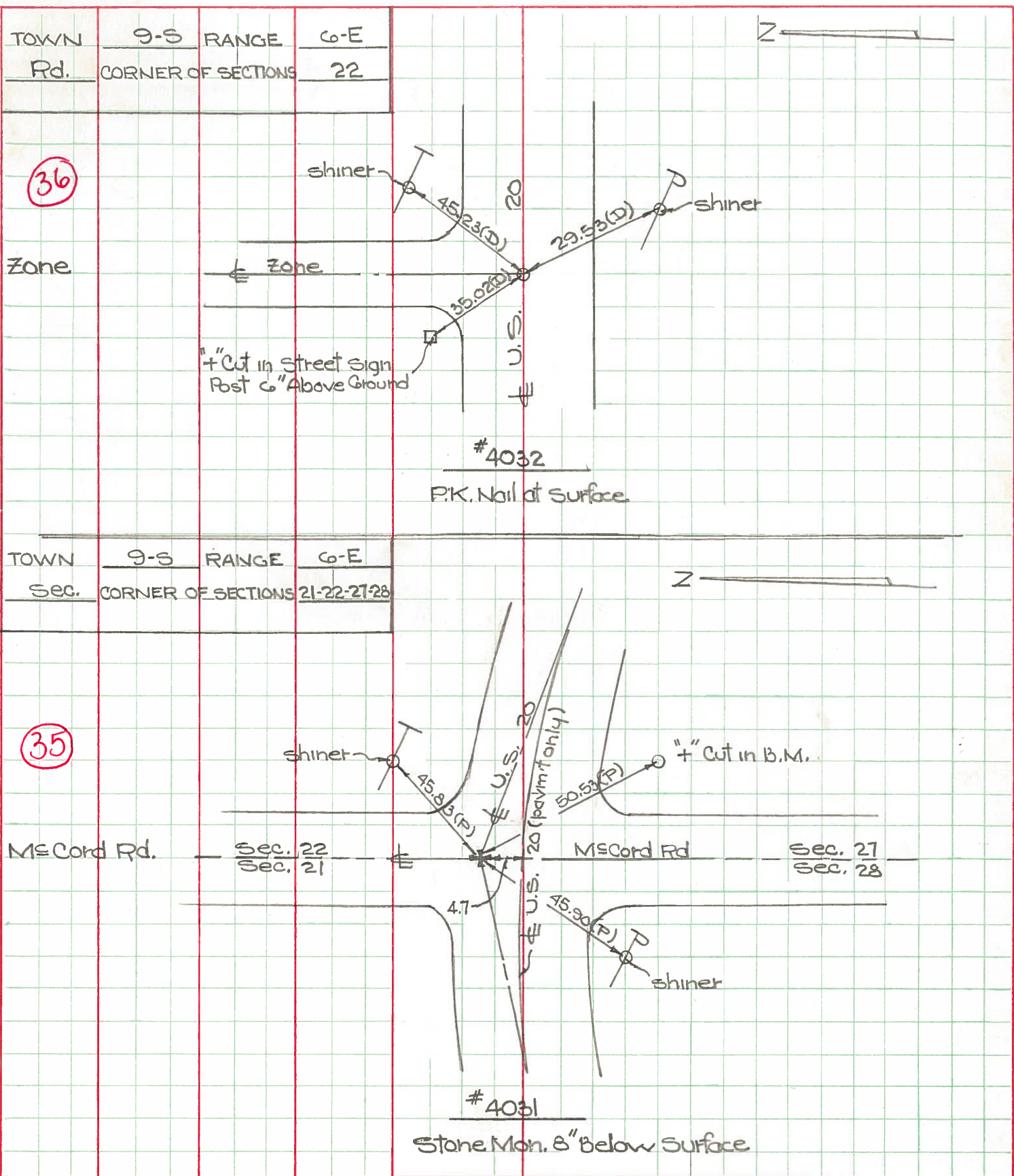
PERSONNEL TITLE PERSONNEL TITLE

COUNTY Lucas DATE May 21, 1968

W. Benno
 D. Curtis
 J. Teal
 J. Brindley

S. R. 20 WEATHER mild
 SEC. TEMP. 50°±

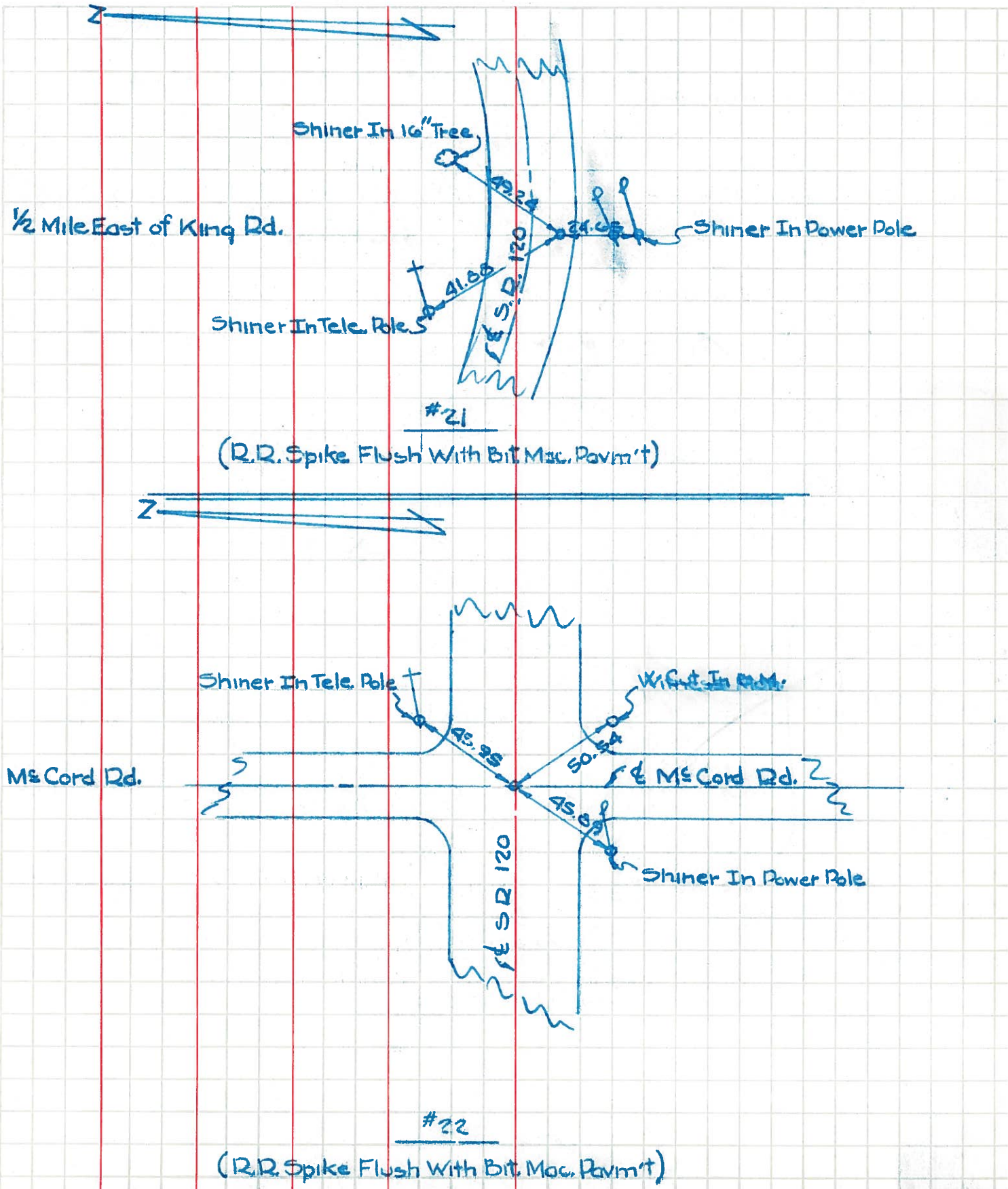
DESCRIPTION U.S. 20 (Central Ave) - Ref. Mon. & Control Points JOB NO. 02994 (0)



PERSONNEL	TITLE	PERSONNEL	TITLE	COUNTY	DATE
W. Denno				Lucas	Feb. 17, 1966
D. Curtis				US 20	
F. Omey				120	WEATHER Sunny-Cold
				SEC.	TEMP. 24°
DESCRIPTION				JOB NO.	

S. 2. 120 (Central Ave) - Ref Mon & Control Points

LEFT CENTER LINE RIGHT



PERSONNEL TITLE PERSONNEL TITLE

COUNTY Lucas DATE Oct 5-7-56

S. R. U.S. #20 WEATHER

SEC. TEMP.

DESCRIPTION LEFT CENTER LINE RIGHT JOB NO.

27

5/4 cor. sec. 20 E-6-E
Nail Shelton Rd. (South)
O.K. set RR Spt. to surface
#61
Set RR Spt. to surface 9/17/65

S.E. to witness man. LU. Co. B.M. #118 42.9
N. to witness man. 29.8
W.S.W. to witness man. 42.59
W.N.W. to shiner in 24" oak 72.7

Int. King Rd.
Brass plate set RR Spt. to surface
O.K. set RR Spt. to surface
#62
Set RR Spt. to surface 9/17/65

N.W. to point of "U" in County B.M. 41.3
N.E. to witness man. 40.02
S.W. to shiner in P.P. 41.1
S.E. to + in pump island 63.38
S.W. to witness man. 40.4

5/4 cor. sec. 21 E-6-E
Brass plate set RR Spt. to surface
O.K. set RR Spt. to surface
#63
Set RR Spt. to surface 9/17/65

N.W. to shiner in T.P. 41.86
S. to shiner in P.P. 24.6
N. to point of "U" in County B.M. #120 38.73
N.E. to shiner in 12" Box Elder 49.4

Int. McCord Rd.
Brass plate set RR Spt. to surface
#64
Set RR Spt. to surface 9/17/65

S.E. to point of "U" in County B.M. #119 50.0
N.W. to witness man. 42.9
N.W. to S.E. corner of pump island 57.9
N.E. to shiner in T.P. 46.9
N.W. to shiner in P.P. 45.86
S.E. to near corner of McCord Rd. 41.86

5/4 cor. sec. 22 E-6-E
Brass plate set RR Spt. to surface
Moffat Rd.
#65
+ cut for Moffat Rd on steel overhead

N.W. to point of "U" in County B.M. #122 38.1
N.E. to witness man. (state RR) 97.
S.E. to iron pipe in witness man. 40.8
S.W. to shiner P.P. 32.11
S. to shiner guard rail post 38.82
S.E. " " " " 32.03
S.W. " " " " 33.73