

O.D.O.T. DISTRICT 2 SURVEY OFFICE (USE ONLY)

PERSONNEL _____

REFERENCE NO. 37

SHEET 17 OF 20

NOTES LOEHRKE DATE 7/8/98

ROUTE US 20

H.C. CANTERBURY WEATHER HUMID

COUNTY LUCAS

R.C. HELM TEMP. 82°

TOWNSHIP SYLVANIA

SECTION 22

DWG BY NIESE PID _____

T 9 S R 6 E

TYPE MONUMENT MONBOX

ON SURFACE - ~~BELOW~~ ON

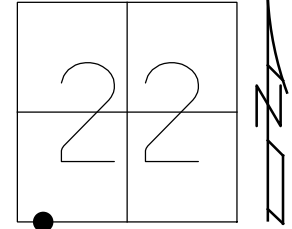
OFFSET ☉ PAVEMENT ON LT : RT

40' TO LT ~~EDGE PAVEMENT~~ CURB

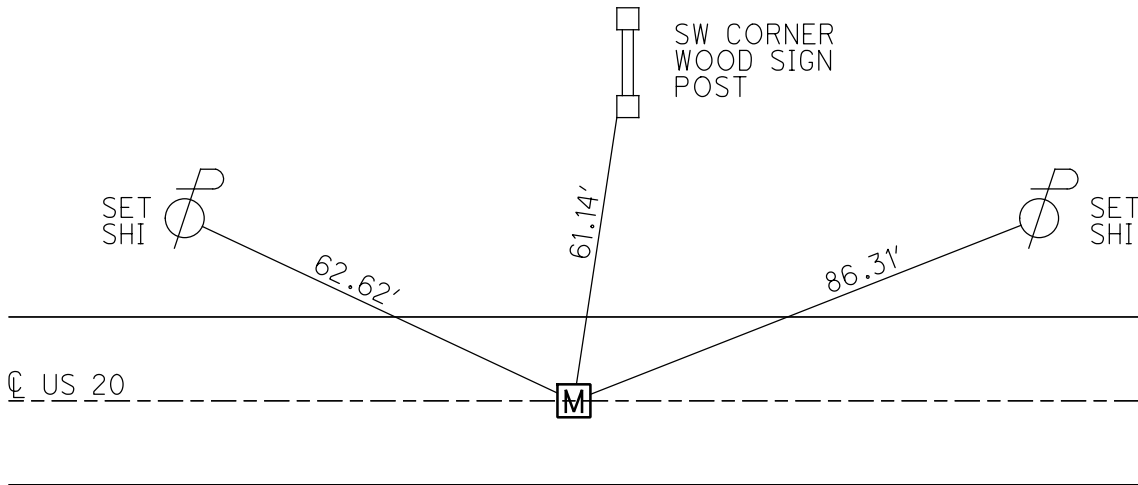
STATION: 486+95

HORZ. DATUM: _____ GEOID: _____

GRID: NORTHING: _____ EASTING: _____



RECORD:
POSSIBLE P.T.
FD MONBOX
7/8/98, CL



O.D.O.T. DISTRICT 2 SURVEY OFFICE

PERSONNEL

REFERENCE NO. 37

SHEET 24 OF 27

NOTES LOEHRKE

H.C. CANTERBURY

DATE 7-8-98

ROUTE U.S. 20

R.C. HELM

WEATHER Humid

COUNTY LUCAS

TEMP. +82

TOWNSHIP SYLVANIA

SECTION _____

T _____ R _____

TYPE MONUMENT MON Box - Possible P.T.

~~ON~~ SURFACE - BELOW Yes

~~LEFT~~ - PAV'T. - ~~RIGHT~~ Yes

40' TO LT CURB ~~EDGE~~ PAVEMENT

S.L.M. 486+95

