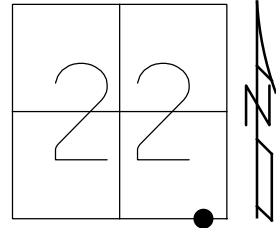


O.D.O.T. DISTRICT 2 SURVEY OFFICE (USE ONLY)

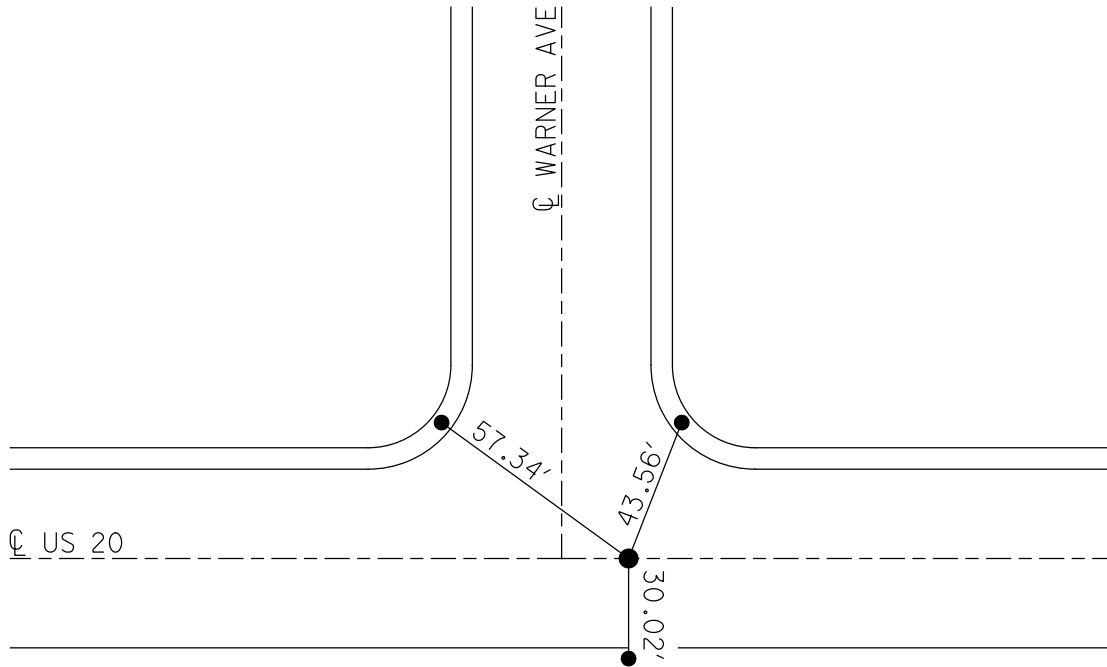
PERSONNEL _____ REFERENCE NO. 40 SHEET 20 OF 20
 NOTES LOEHRKE DATE 1/8/98 ROUTE US 20
 H.C. CANTERBURY WEATHER HUMID COUNTY LUCAS
 R.C. HELM TEMP. 82° TOWNSHIP SYLVANIA
 SECTION 22
 DWG BY NIESE PID _____ T 9 S R 6 E

TYPE MONUMENT P.K. NAIL
 ON SURFACE - ~~BELOW~~ ON
 OFFSET CL PAVEMENT ON LT : RT
29.5' TO RT ~~EDGE PAVEMENT~~ CURB
 STATION: 530+45



HORZ. DATUM: _____ GEOID: _____
 GRID: NORTHING: _____ EASTING: _____

RECORD:
 FD P.K. NAIL
 ORIGIN UNKNOWN
 1/8/98, CL



DRILL HOLES
 TOP CONC CURB

O.D.O.T. DISTRICT 2 SURVEY OFFICE

PERSONNEL

REFERENCE NO. 40

SHEET 26 OF 27

NOTES Lucas

H.C. CANTONBURY

DATE 7-8-98

ROUTE U.S. 20

R.C. 161M

WEATHER Humid

COUNTY LUCAS

TEMP. +82

TOWNSHIP SYLVANIA

SECTION _____

T _____ R _____

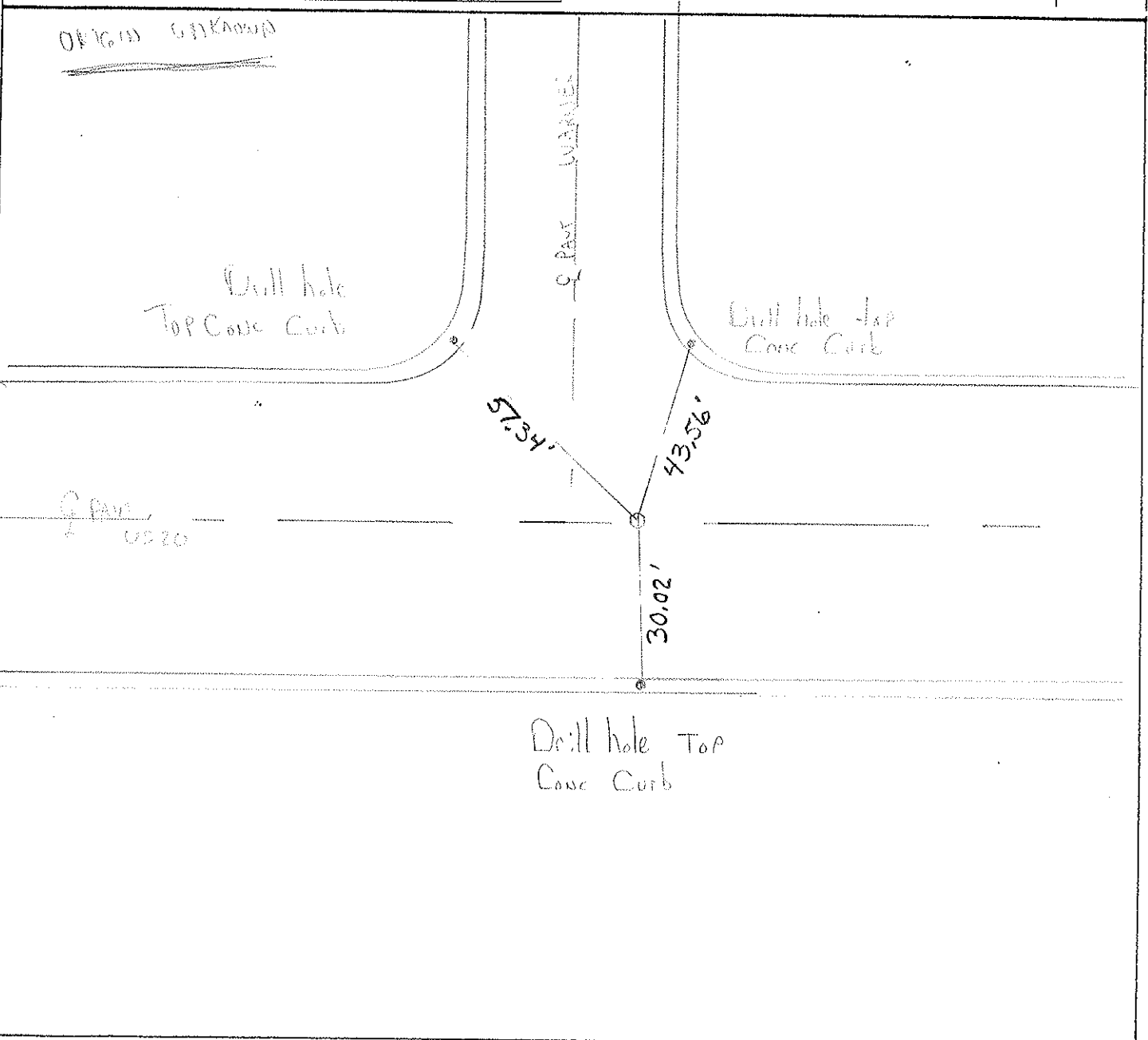
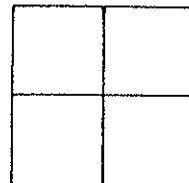
TYPE MONUMENT P.K. NAIL - ORIGIN UNK

ON SURFACE - BELOW Yes

LEFT - & PAV'T. - RIGHT Yes

+29.5 TO RIGHT EDGE PAVEMENT

S.L.M. 530+45



PERSONNEL	TITLE	PERSONNEL	TITLE
W. Denno			
D. Curtis			
R. Brannan			
D. Stevens			

COUNTY Lucas DATE June 15, 1971
 S. R. 20 WEATHER Sunny-mild
 SEC. _____ TEMP. 75°±

DESCRIPTION References To Control Points JOB NO. _____

