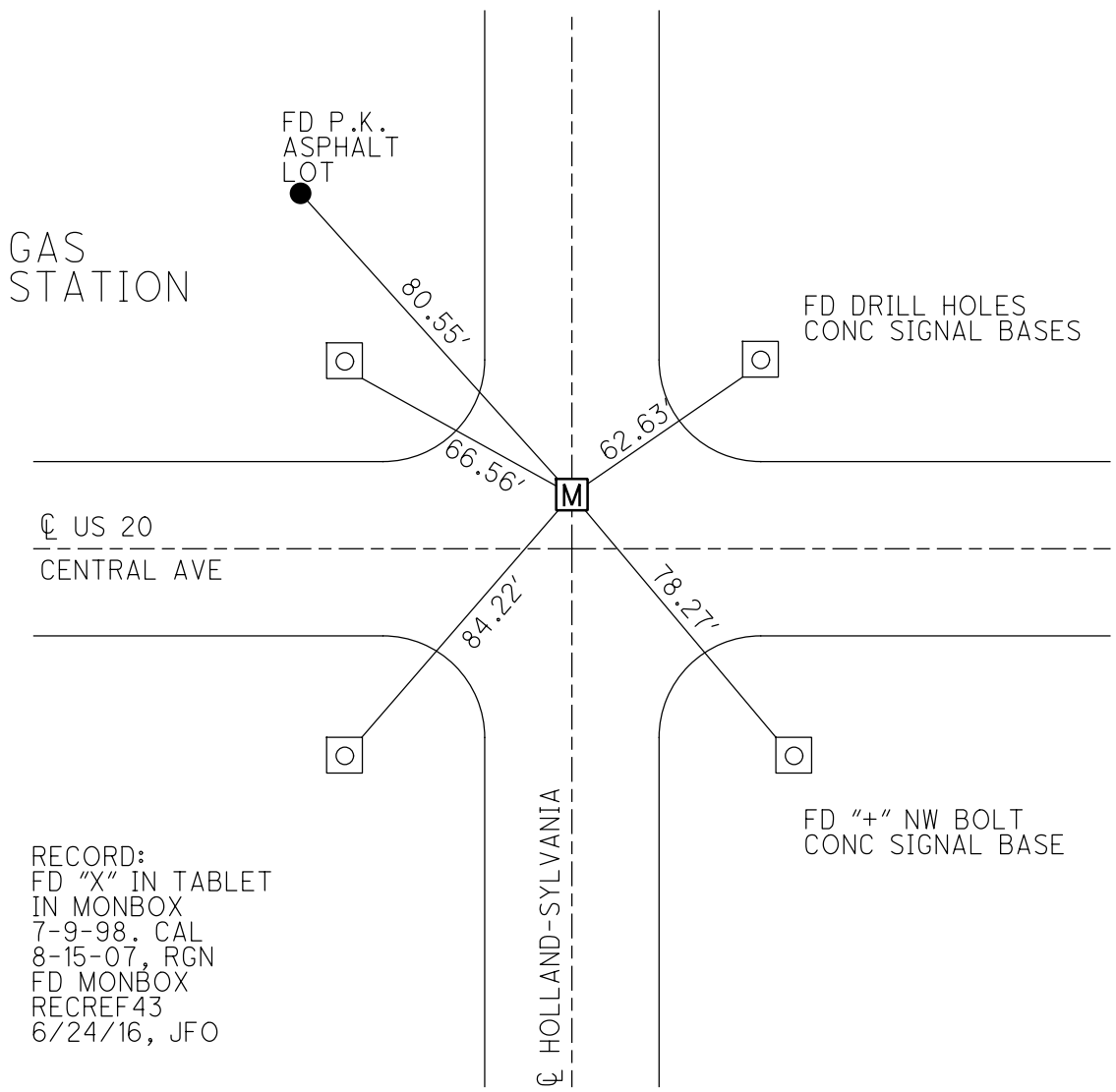
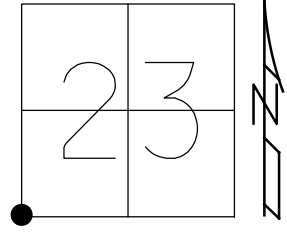


O.D.O.T. DISTRICT 2 SURVEY OFFICE (USE ONLY)

PERSONNEL _____ REFERENCE NO. 43 SHEET 1 OF 9
 NOTES NUHFER DATE 8-15-07 ROUTE US 20
 H.C. HUSS WEATHER NICE COUNTY LUCAS
 R.C. CANTERBURY TEMP. 80° TOWNSHIP SYLVANIA
HOUESHELL SECTION 23
 DWG BY JAMES PID 95717 T 9 N R 6 E

TYPE MONUMENT MONBOX
~~ON SURFACE~~ - BELOW 4"
 OFFSET \odot PAVEMENT - LT : ~~RT~~
- TO - EDGE PAVEMENT
 STATION: 536+32.45

HORZ.DATUM: NAD83 2011 GEOID: NAVD88 2012A
 GRID: NORTHING: 734373.050 EASTING: 1645394.190

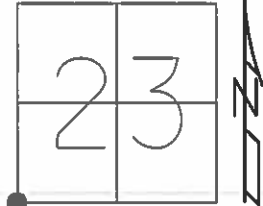


RECORD:
 FD "X" IN TABLET
 IN MONBOX
 7-9-98. CAL
 8-15-07, RGN
 FD MONBOX
 RECRE43
 6/24/16, JFO

O.D.O.T. DISTRICT 2 SURVEY OFFICE (USE ONLY)

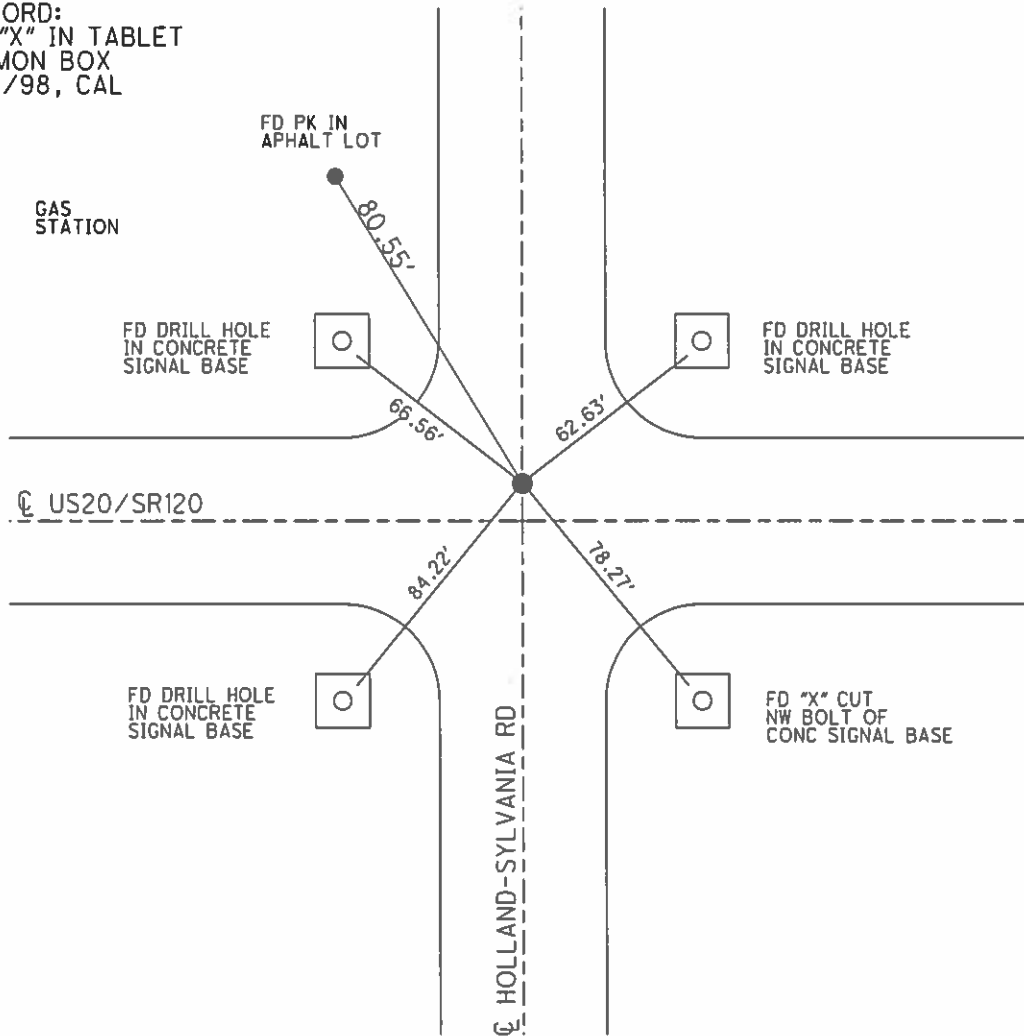
PERSONNEL _____ REFERENCE NO. 43 SHEET 1 OF 9
 NOTES NUHFER DATE 8/15/07 ROUTE US 20
 H.C. HUSS WEATHER NICE COUNTY LUCAS
 R.C. CANTERBURY TEMP. 80° TOWNSHIP SYLVANIA
HOUESHELL SECTION 23
 T 9 N R 6 E

TYPE MONUMENT "X" IN TABLET IN MONBOX
~~ON SURFACE~~ - BELOW 4"
 LEFT - ☉ PAV'T - ~~RIGHT~~ LT OF ☉
- TO - EDGE PAVEMENT
 S.L.M. 536+34



GRID: NORTHING: - EASTING: -

RECORD:
 FD "X" IN TABLET
 IN MON BOX
 7/9/98, CAL



O.D.O.T. DISTRICT 2 SURVEY OFFICE (USE ONLY)

PERSONNEL _____

REFERENCE NO. 43

SHEET 1 OF 10

NOTES NUHFER

DATE 08-15-07

ROUTE SR 20/SR120

H.C. HUSS

WEATHER NICE

COUNTY LUCAS

R.C. CANTERBURY

TEMP. +80°

TOWNSHIP SYLVANIA

HOUESHELL

SECTION 23

T 9 N R 6 E

TYPE MONUMENT FD "X" IN TAB. IN MON. BOX

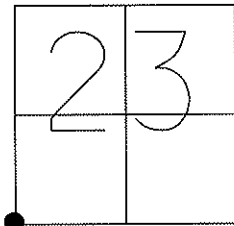
~~ON SURFACE~~ - BELOW 4" DOWN

LEFT - ☉ PAV'T = RIGHT LT. OF CL.

TO EDGE PAVEMENT

S.L.M. 536+41

GPS Northing= _____ Easting= _____



FD "X" IN TABLET
IN MON. BOX
07-09-98 CAL

GAS
STATION

FD. PK IN
ASPHALT LOT

FD. DRILL
HOLE CONC.
SIGNAL BASE

HOLLAND-SYLVANIA RD.

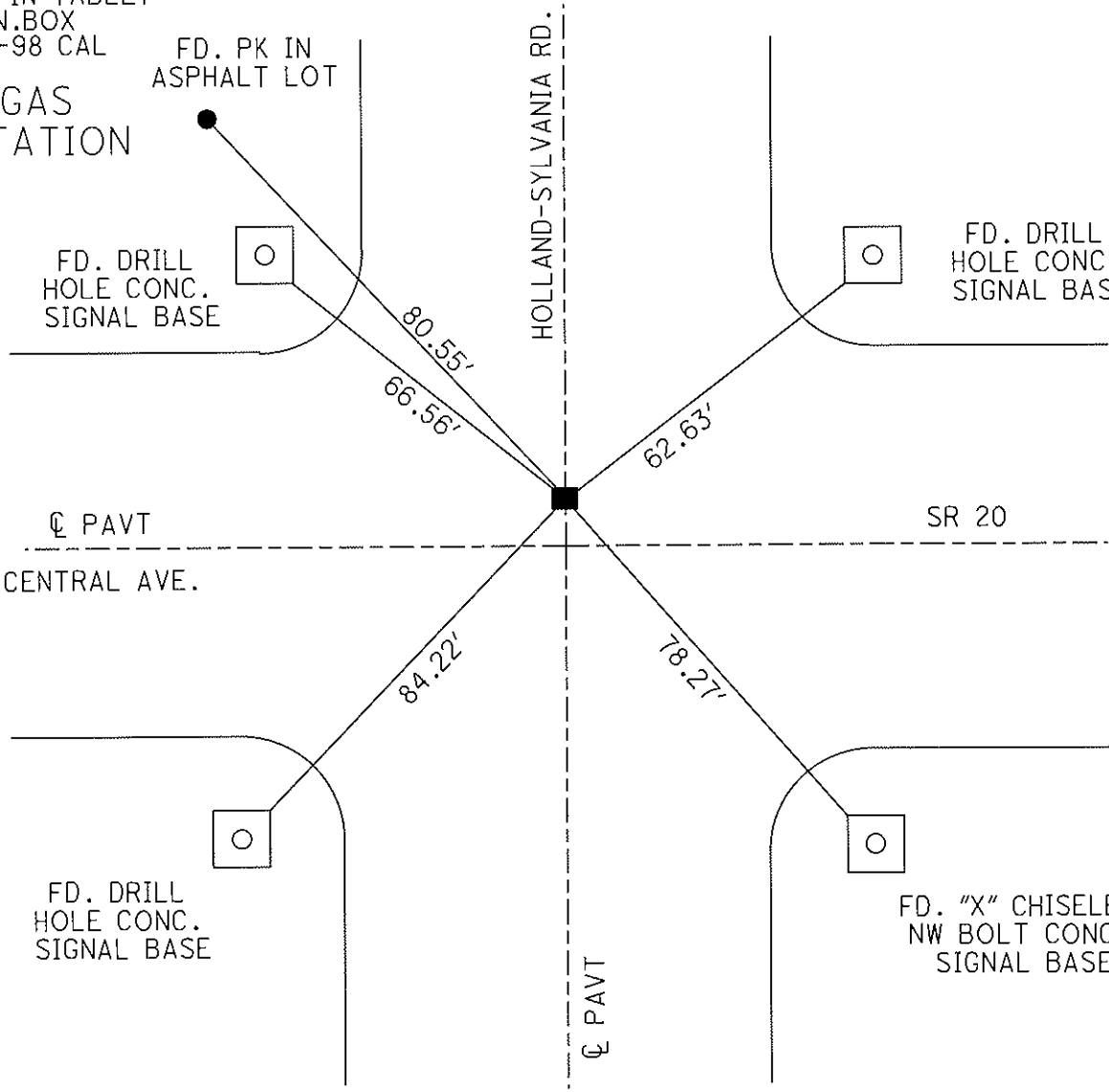
FD. DRILL
HOLE CONC.
SIGNAL BASE

☉ PAVT
CENTRAL AVE.

SR 20

FD. DRILL
HOLE CONC.
SIGNAL BASE

FD. "X" CHISELED
NW BOLT CONC.
SIGNAL BASE



O.D.O.T. DISTRICT 2 SURVEY OFFICE

PERSONNEL

REFERENCE NO. 43

SHEET 27 OF 27

NOTES LOEHRKE

H.C. CANTERBURY

R.C. HELM

DATE 7-9-98

WEATHER Nice

TEMP. +76

ROUTE U.S. 20

COUNTY LUCAS

TOWNSHIP SYLVANIA

SECTION _____

T _____ R _____

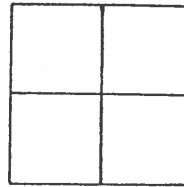
TYPE MONUMENT Possible TABLET in Man Box

ON SURFACE - BELOW 4 1/2 in

LEFT- & PAVT. - RIGHT _____

TO _____ EDGE PAVEMENT

S.L.M. 536 +90



Resurveyed 2008

Set P.K. Nail on Line
from Drill Hole / side Walk
thru monument - IN Asphalt
Total Length across
163.93'
Lot of
Gas Station

Drill hole in
CONC. SIGNAL BASE

HOLL-SYLVAN.

Drill hole in CONC
SIGNAL Base

80.55'
66.55'

62.58'

& PAVT.

U.S. 20
Central Ave

84.21'

75.24'

Drill hole in
CONC SIGNAL
BASE

WALK

Drill hole in
CONC Walk

& PAVT.

CONC

O.D.O.T. DISTRICT 2 SURVEY OFFICE

PERSONNEL

REFERENCE NO. 43

SHEET 1 OF 6

NOTES CORDES

H.C. BARNHISEL

DATE 6-6-94

ROUTE US 20/SP 120

R.C. VAN DUSEN

WEATHER SUNNY

COUNTY LUCAS

TEMP. +80° F

TOWNSHIP SYLVANIA

SECTION 23

T 9 S R 6 E

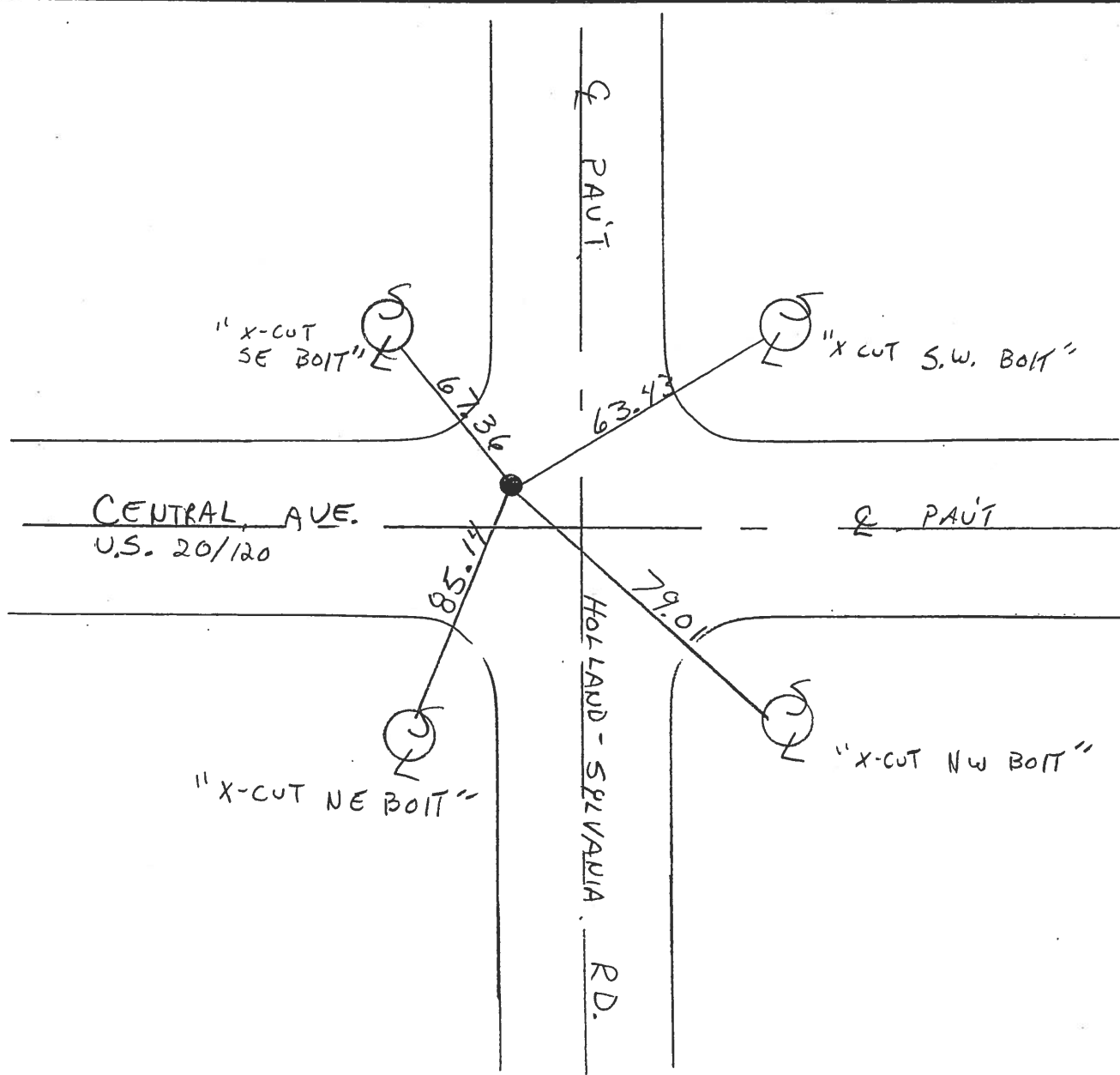
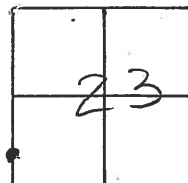
TYPE MONUMENT BRASS BOLT

~~ON SURFACE~~ - BELOW 6"

LEFT-~~Q~~ PAV'T. - ~~RIGHT~~ 17.3

TO EDGE PAVEMENT

S.L.M. _____



PERSONNEL TITLE PERSONNEL TITLE

COUNTY Lucas DATE May 21, 1968

W. Denno

S. R. 20 WEATHER mild

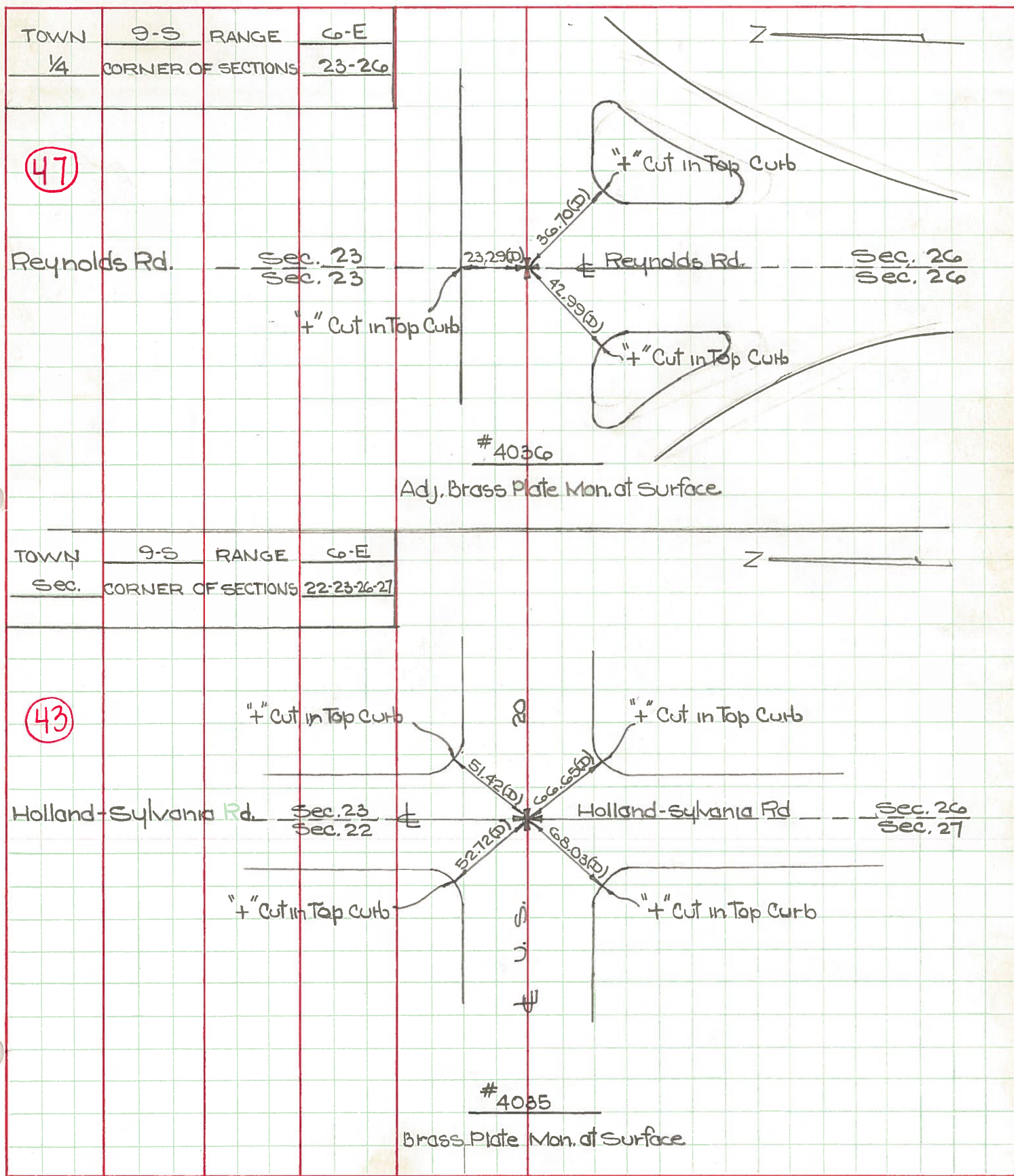
D. Curtis

J. Teal

SEC. TEMP. 55°±

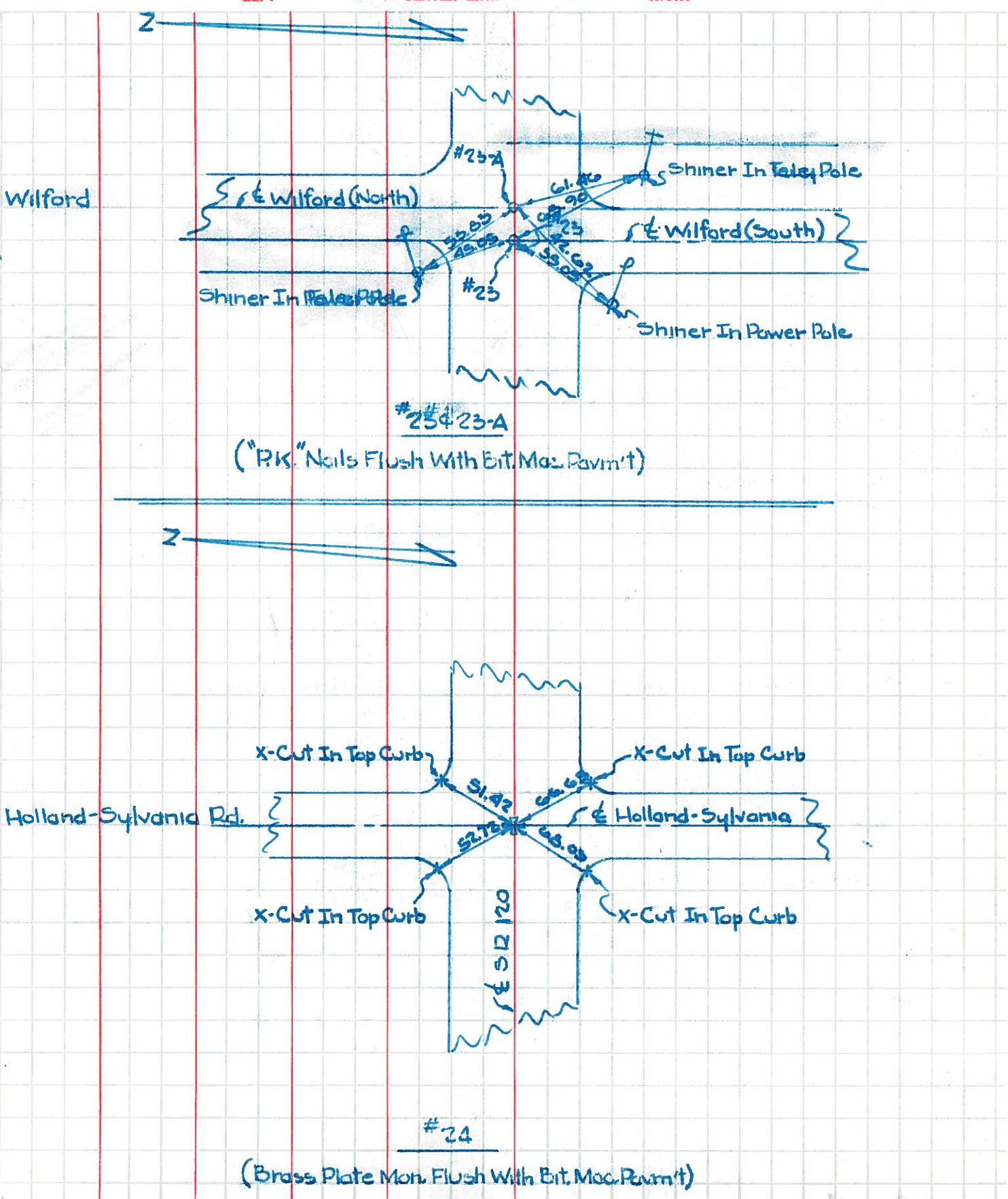
J. Brindley

DESCRIPTION U.S. 20 (Central Ave) - Ref. Mon. & Control Points JOB NO. 02994(0)



PERSONNEL	TITLE	PERSONNEL	TITLE	COUNTY	DATE
W. Denno				Lucas	Feb. 16, 1966
D. Curtis				US 20	
D. Granata				120	Sunny-Cold
F. Omev					34°

DESCRIPTION: SR 120 (Central Ave) - Ref Mon. & Control Points JOB NO. _____



PERSONNEL TITLE PERSONNEL TITLE

COUNTY Lucas DATE OK 5-2-58

S. R. 45 #20 WEATHER

SEC. TEMP.

DESCRIPTION LEFT CENTER LINE RIGHT JOB NO.

Int. Holland	Sylvania Ed.		N.E. to shiner in traffic light Guy pole	44.24
Pt.	Brass Plate		S.W. to shiner in traffic light Guy pole	49.80
O.K.			N.W. to + in rim of M.H. back of c. b	

#66

Rad. 39.20'

(43)

S.W. to ref. man. gone 45.00

N.E. to ref. man. 46.38'

Int. Reynolds Ed.			S. to shiner in T.P.	22.39
O.K.	Brass (Adj) Mon.		N.E. to shiner in P.P.	64.00

#67

(47)

S.E. to X-in top North end Conc. Island 36.75

N. to X-in top of curb 23.30 18.32

S.W. to X in top N.W. end Conc Island curb 42.97

S.E. cor. sec. 23	R-6-E.		N.E. to shiner in 36" oak	35.70'
Conc. nail			S. to shiner in fence post	40.38
Brass Mon. (Adj)			S.W. to shiner in fence post	52.86

#68

N.W. to X-S.W. cor. C.B. 23.20

S.E. to spike in T.P. 37.35

S.W. to X-N.W. cor. of C.B. 22.23

Int. Corey Ed.			S.W. to man. wit. marker.	43.73
Brass Mon. (Adj)			S.E. to spike in cable pole	42.80

#69

S.W. to shiner in 12" Elm 60.66

N.E. to man. wit. marker. 42.65