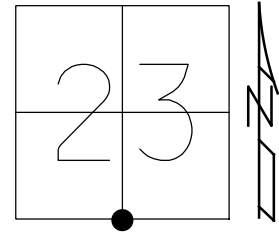


O.D.O.T. DISTRICT 2 SURVEY OFFICE (USE ONLY)

PERSONNEL _____ REFERENCE NO. 47 SHEET 2 OF 55
 NOTES AUBLE DATE 7/13/20 ROUTE US 20
 H.C. LEU WEATHER SUNNY COUNTY LUCAS
 R.C. GARRETT TEMP. 70° TOWNSHIP SYLVANIA
RHOADES, MAHLER, O'DONNELL
 DWG BY NIESE PID 106330 SECTION 23
 T 9 N R 6 E

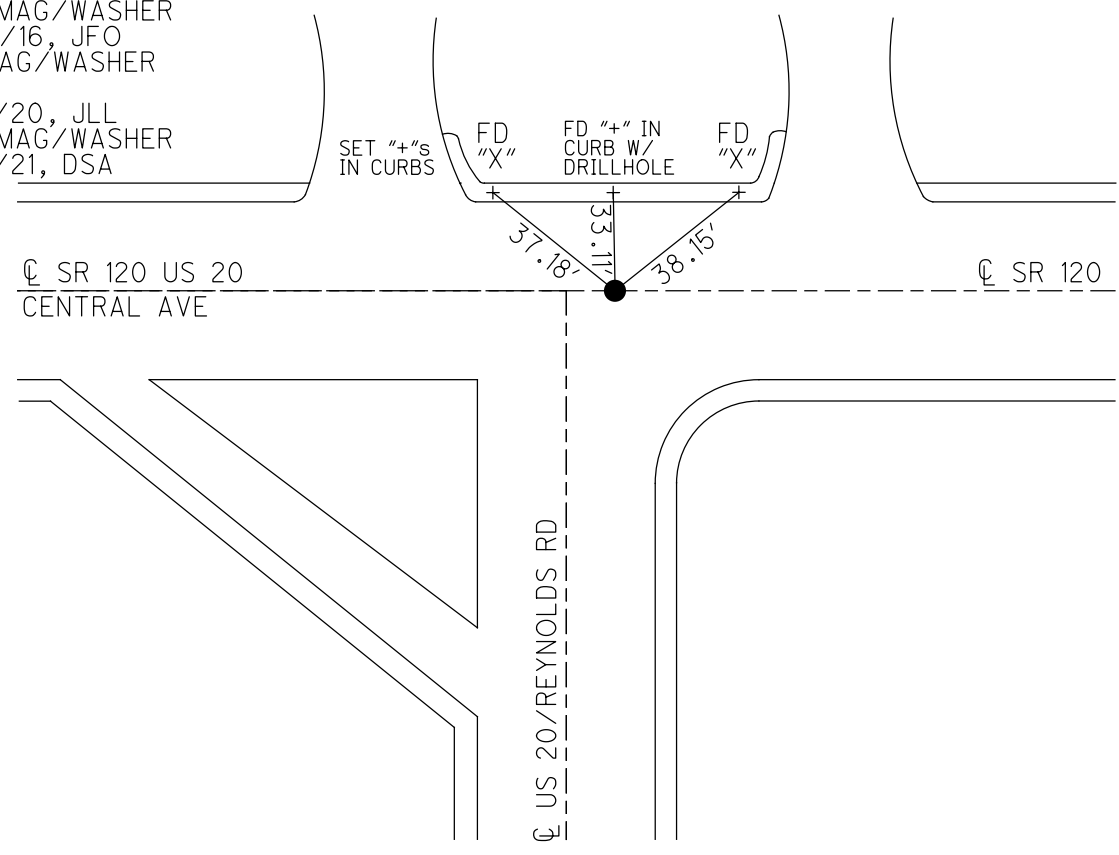
TYPE MONUMENT MAG/WASHER
 ON SURFACE - ~~BELOW~~ ON
 OFFSET \odot PAVEMENT 9' EAST \odot US 20 LT : RT
32.9' TO LT EDGE PAVEMENT
 STATION: 562+32.00



HORZ.DATUM: NAD83(2011) GEOID: NAVD88 2012A
 GRID: NORTHING: 734449.594 EASTING: 1647992.627

RECORD:
 FD ADJ BRASS MON
 TO SURFACE
 8/9/71, W.DENNO
 FD P.K./WASHER
 5/23/03, SWH
 FD MAG NAIL
 8/15/07, RGN
 SET MAG/WASHER
 6/24/16, JFO
 FD MAG/WASHER
 REF1
 7/13/20, JLL
 SET MAG/WASHER
 12/9/21, DSA

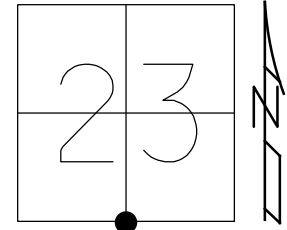
NOTE: REF 1 SR 120
 POINT 8' E OF
 REYNOLDS RD \odot



O.D.O.T. DISTRICT 2 SURVEY OFFICE (USE ONLY)

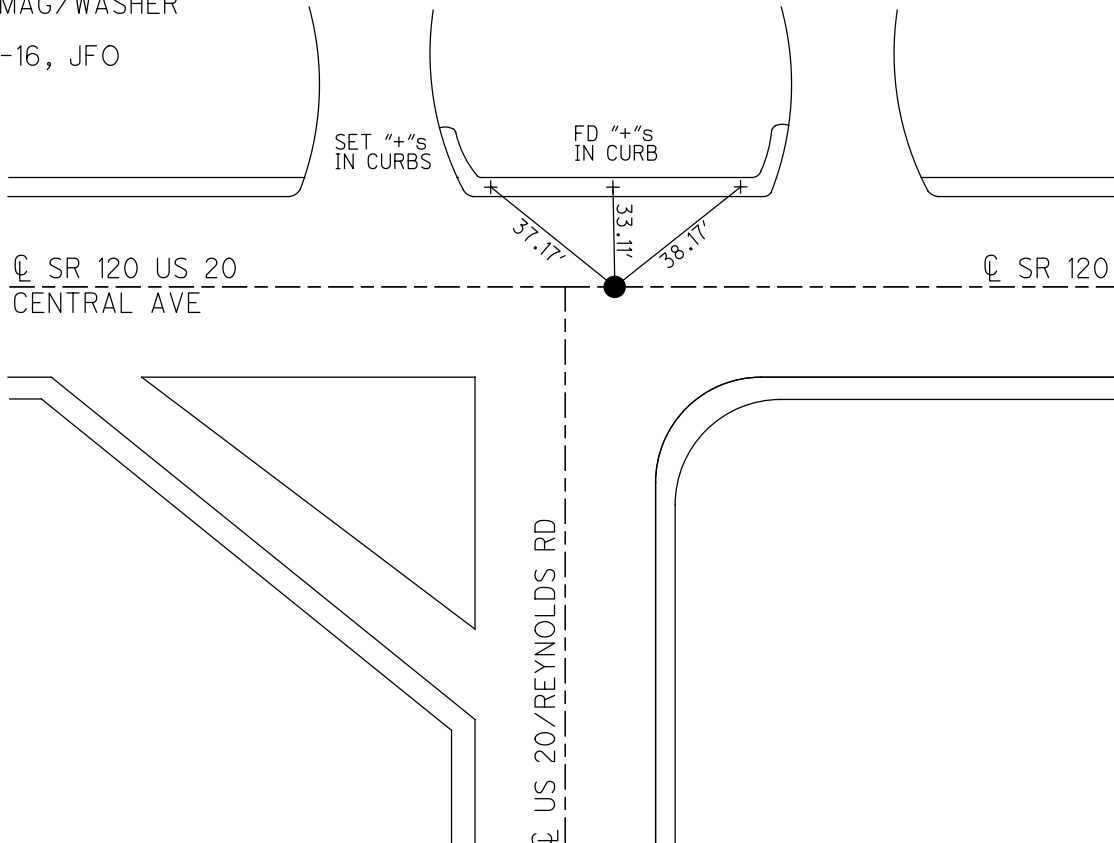
PERSONNEL _____ REFERENCE NO. 47 SHEET 2 OF 9
 NOTES RHOADES DATE 6-24-16 ROUTE US 20
 H.C. HOMAN WEATHER SUNNY COUNTY LUCAS
 R.C. O'DONNELL TEMP. 75° TOWNSHIP SYLVANIA
LEU, KEFFER DWG BY JAMES PID 95717 SECTION 23
 T 9 N R 6 E

TYPE MONUMENT MAG/WASHER
 ON SURFACE - ~~BELOW~~ ON
 OFFSET CL PAVEMENT 9' EAST CL US 20 LT : RT
32.9' TO LT EDGE PAVEMENT
 STATION: 562+32.00
 HORZ.DATUM: NAD83 2011 GEOID: NAVD88 2012A
 GRID: NORTHING: 734449.653 EASTING: 1647992.611



RECORD:
 FD ADJ BRASS MON
 TO SURFACE
 8/9/71, W.DENNO
 FD P.K./WASHER
 5/23/03, SWH
 FD MAG NAIL
 8-15-07, RGN
 SET MAG/WASHER
 REF1
 6-24-16, JFO

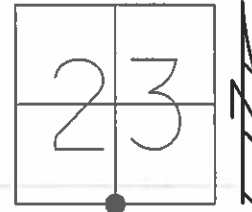
NOTE: REF 1 SR 120
 POINT 8' E OF
 REYNOLDS RD CL



O.D.O.T. DISTRICT 2 SURVEY OFFICE (USE ONLY)

PERSONNEL	REFERENCE NO.	47	SHEET	2	OF	9
NOTES	NUHFER	DATE	8/15/07	ROUTE	US 20	
H.C.	HUSS	WEATHER	NICE	COUNTY	LUCAS	
R.C.	CANTERBURY	TEMP.	80°	TOWNSHIP	SYLVANIA	
	HOUESHELL			SECTION	23	
				T	9	N
				R	6	E

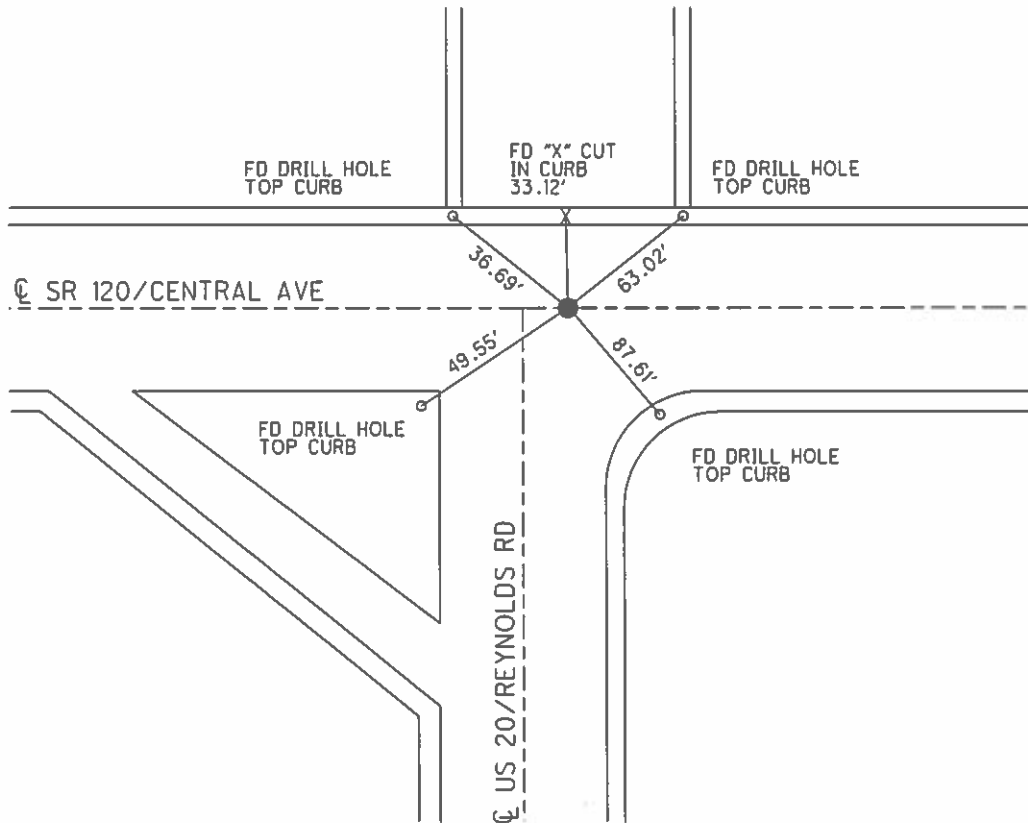
TYPE MONUMENT MAG/WASHER
 ON SURFACE - ~~BELOW~~ ON
 LEFT - PAV'T - RIGHT ON
32.9' TO LT EDGE PAVEMENT
 S.L.M. 562+40



GRID: NORTHING: - EASTING: -

RECORD:
 FD ADJ BRASS MON
 TO SURFACE
 8/9/71, W DENNO
 FD P.K. NAIL/WASHER
 5/23/03, SWH

NOTE:
 POINT 8' E OF
 REYNOLDS RD C



O.D.O.T. DISTRICT 2 SURVEY OFFICE (USE ONLY)

PERSONNEL _____

REFERENCE NO. 1

SHEET 2 OF 10

NOTES NUHFER

DATE 08-15-07

ROUTE SR 20/SR120

H.C. HUSS

WEATHER NICE

COUNTY LUCAS

R.C. CANTERBURY

TEMP. +80°

TOWNSHIP SYLVANIA

HOUESHELL

SECTION 23

T 9 N R 6 E

TYPE MONUMENT MAG NAIL

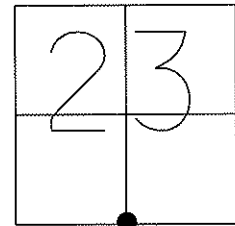
ON SURFACE - ~~BELOW~~ ON SURFACE _____

~~LEFT~~ - C PAV'T - ~~RIGHT~~ 9' EAST OF CL SOUTH

32.9' TO LT. EDGE PAVEMENT

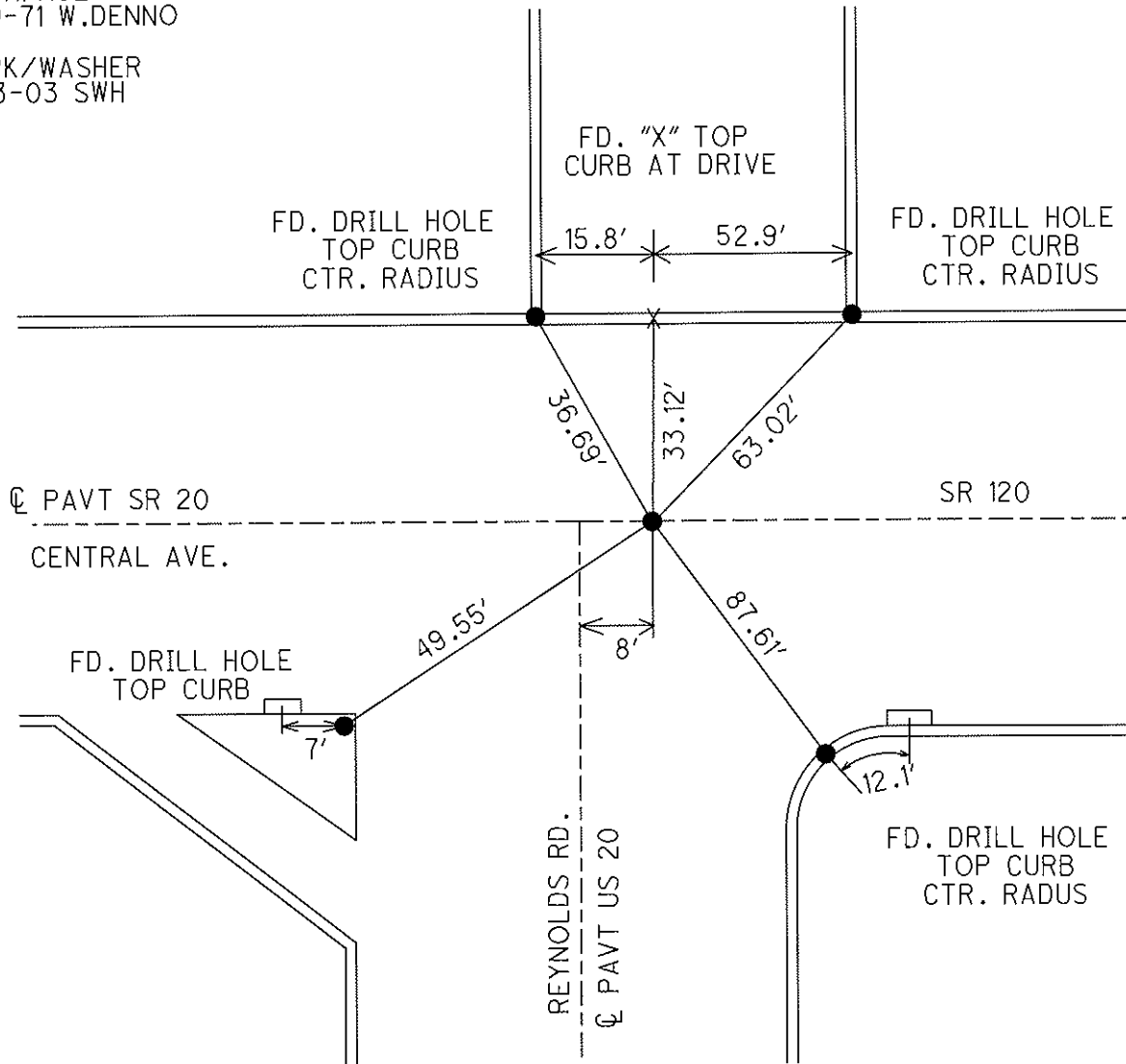
S.L.M. 562+40

GPS Northing= _____ Easting= _____



FD ADJ. BRASS MON
TO SURFACE
08-09-71 W.DENNO

FD. PK/WASHER
05-23-03 SWH



O.D.O.T. DISTRICT 2 SURVEY OFFICE

PERSONNEL

REFERENCE NO. 1

SHEET 1 OF 8

NOTES S. Hoffmann

H.C. A. Brown

R.C. C. Beard

M. Glass

DATE 5-23-2003

WEATHER Cloudy

TEMP. 65°

ROUTE SR 120

COUNTY LUCAS

TOWNSHIP SOLUMBIA

SECTION 23

T 9 S R 6 E

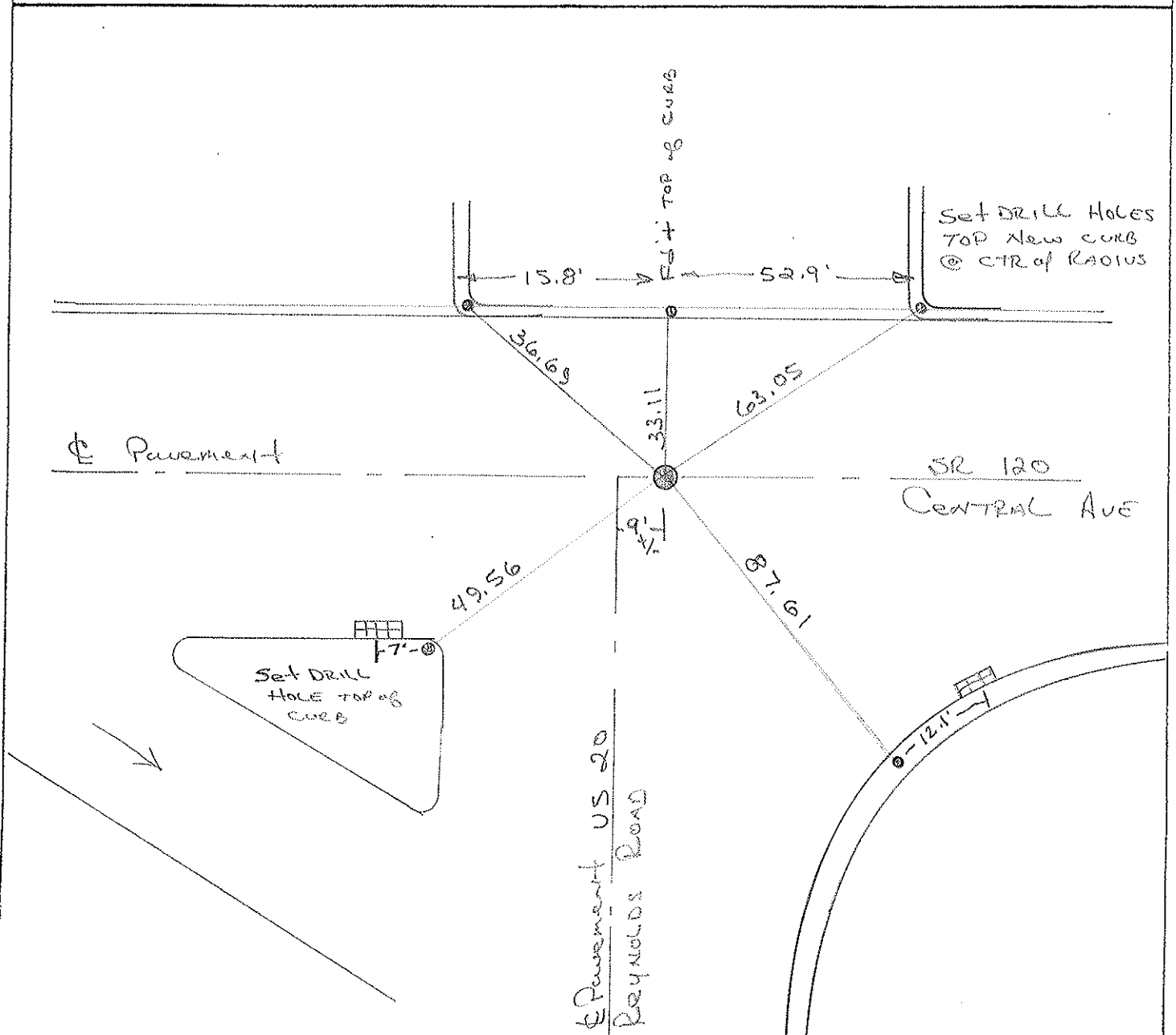
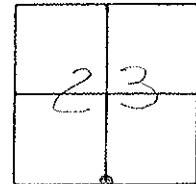
TYPE MONUMENT P.K. steel/was/ten

ON SURFACE - BELOW yes

LEFT - & PAV'T. - RIGHT SR 120

32.9 TO 4 EDGE PAVEMENT

S.L.M. 562 + 40



O.D.O.T. DISTRICT 2 SURVEY OFFICE 2 6

PERSONNEL

REFERENCE NO. 47

SHEET ~~X~~ OF ~~X~~

NOTES LOEHRKE

H.C. CORDES

R.C. CANTERBURY

ROMETO

DATE 7-1-93

WEATHER CLoudy

TEMP. +78

ROUTE S.R.120

COUNTY LUCAS

TOWNSHIP SYLVANIA

SECTION 23

T 9 S R 6 E

Set P.K. / WASHER
8-11-93

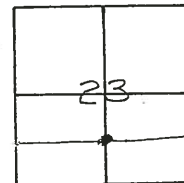
TYPE MONUMENT Bolt Spike

ON SURFACE - BELOW Yes

LEFT- & PAV'T. - RIGHT Yes, of S.R. 120

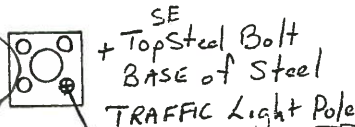
32.9 TO Lt EDGE PAVEMENT

S.L.M. 562 + 40



UP DATED
6-6-94

PROJECT STATIONING
17+140.00 SLK



CROSS TOP
CONC CURB

PAVT S.R. 120

CENTRAL AVE.

39.38

21.52

50.19

41.47

PAVT U.S. 20

REYNOLDS Rd.

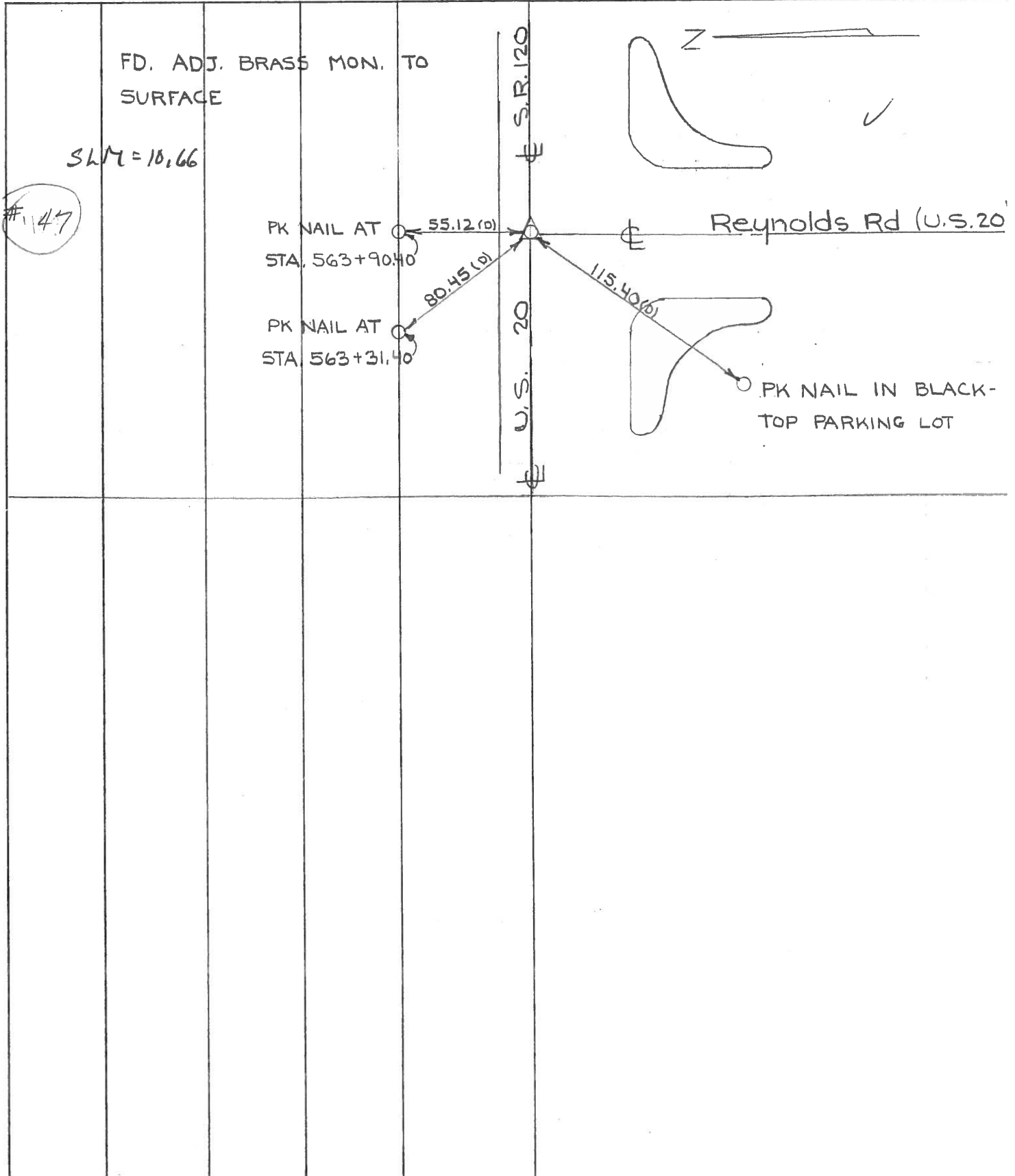
"#1" Top
CONC. CURB

"#2" Top CONC
CURB

TURN
LANE

PERSONNEL	TITLE	PERSONNEL	TITLE	COUNTY	DATE	WEATHER	TEMP.
W. Denna				Lucas	August 9, 1971	Sunny - mild	75° ±
D. Curtis				S. R. 20			
D. STEVENS							
R. BRANNAN				SEC.			

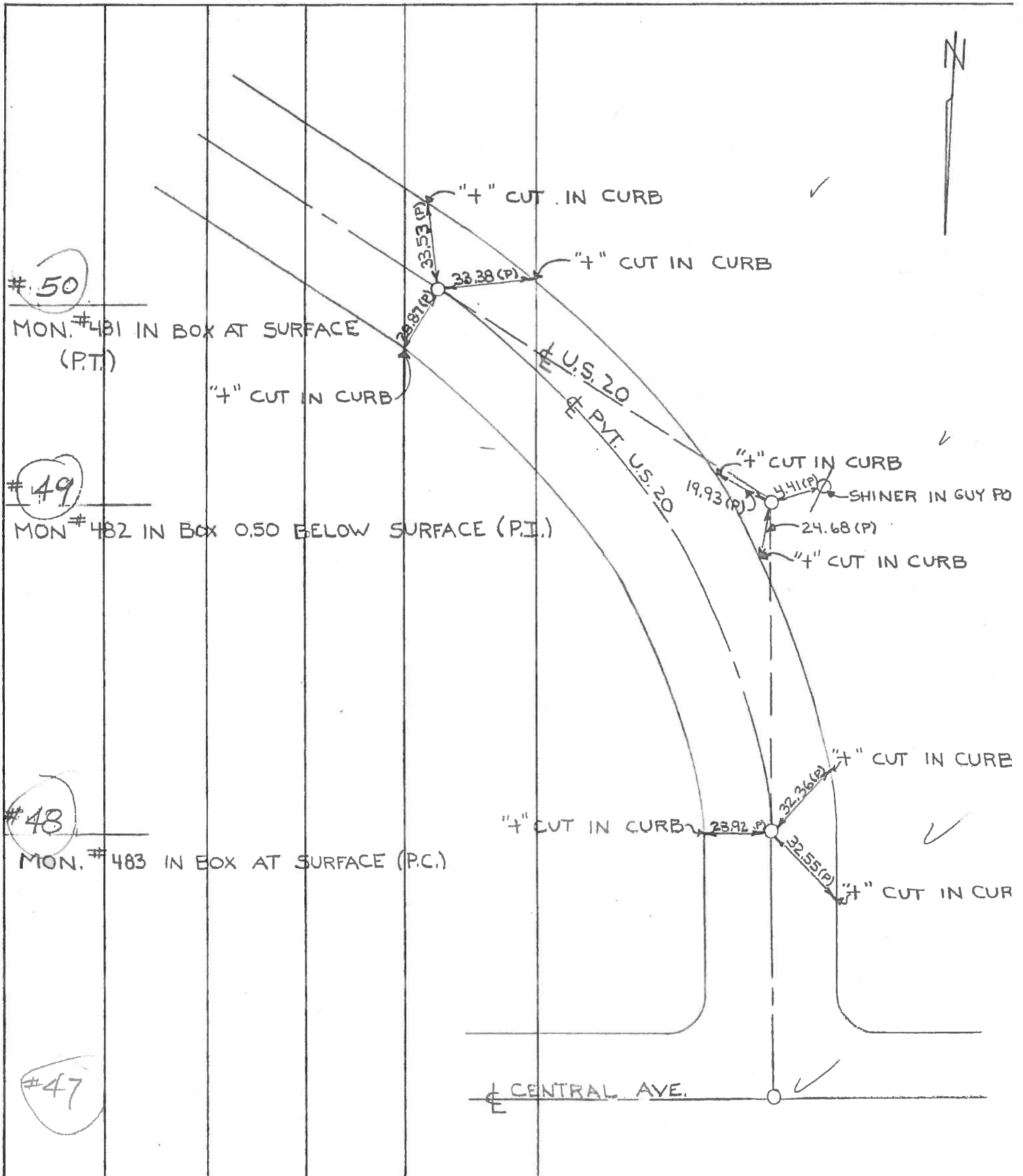
DESCRIPTION References To Control Points JOB NO. _____



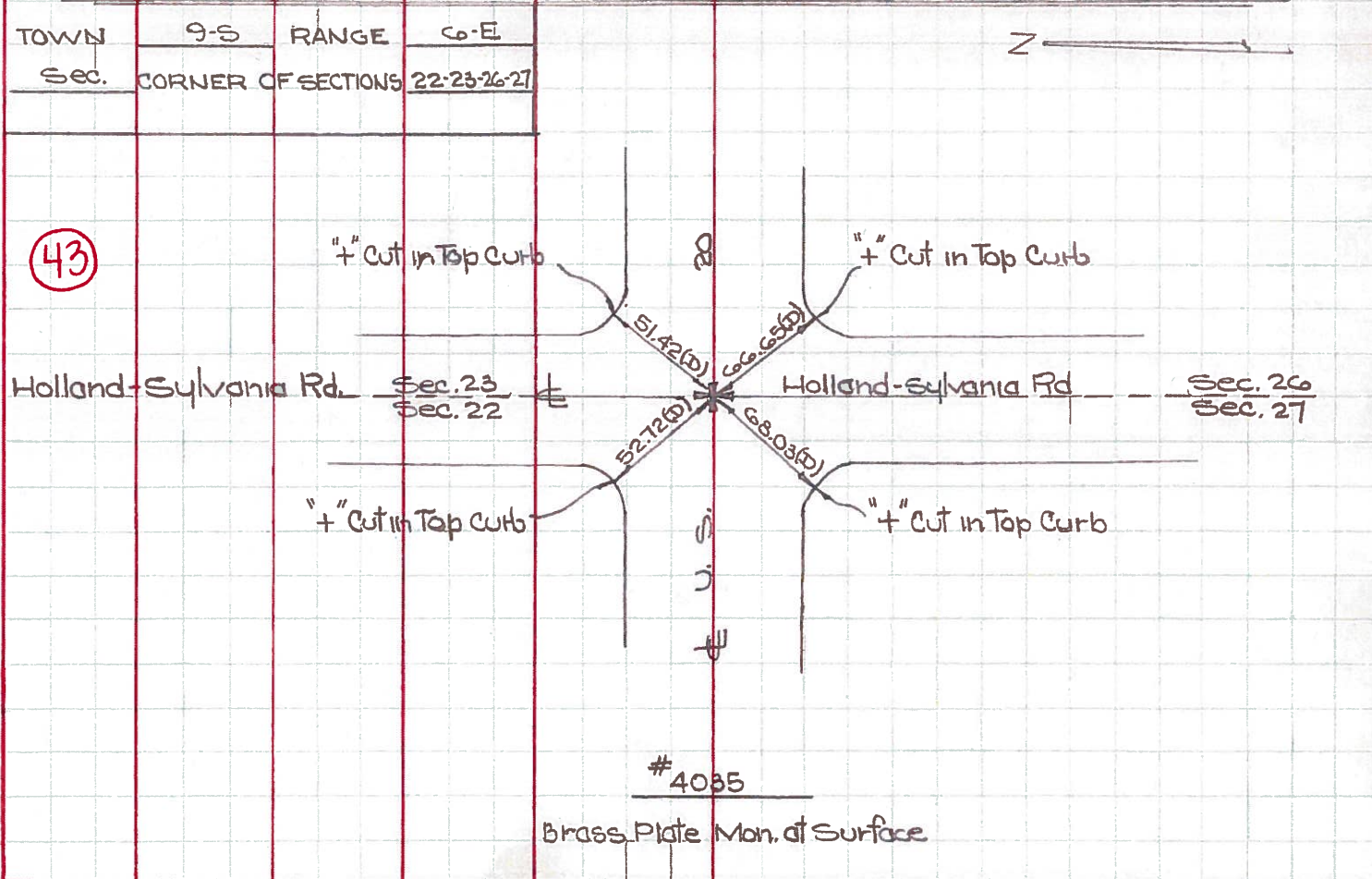
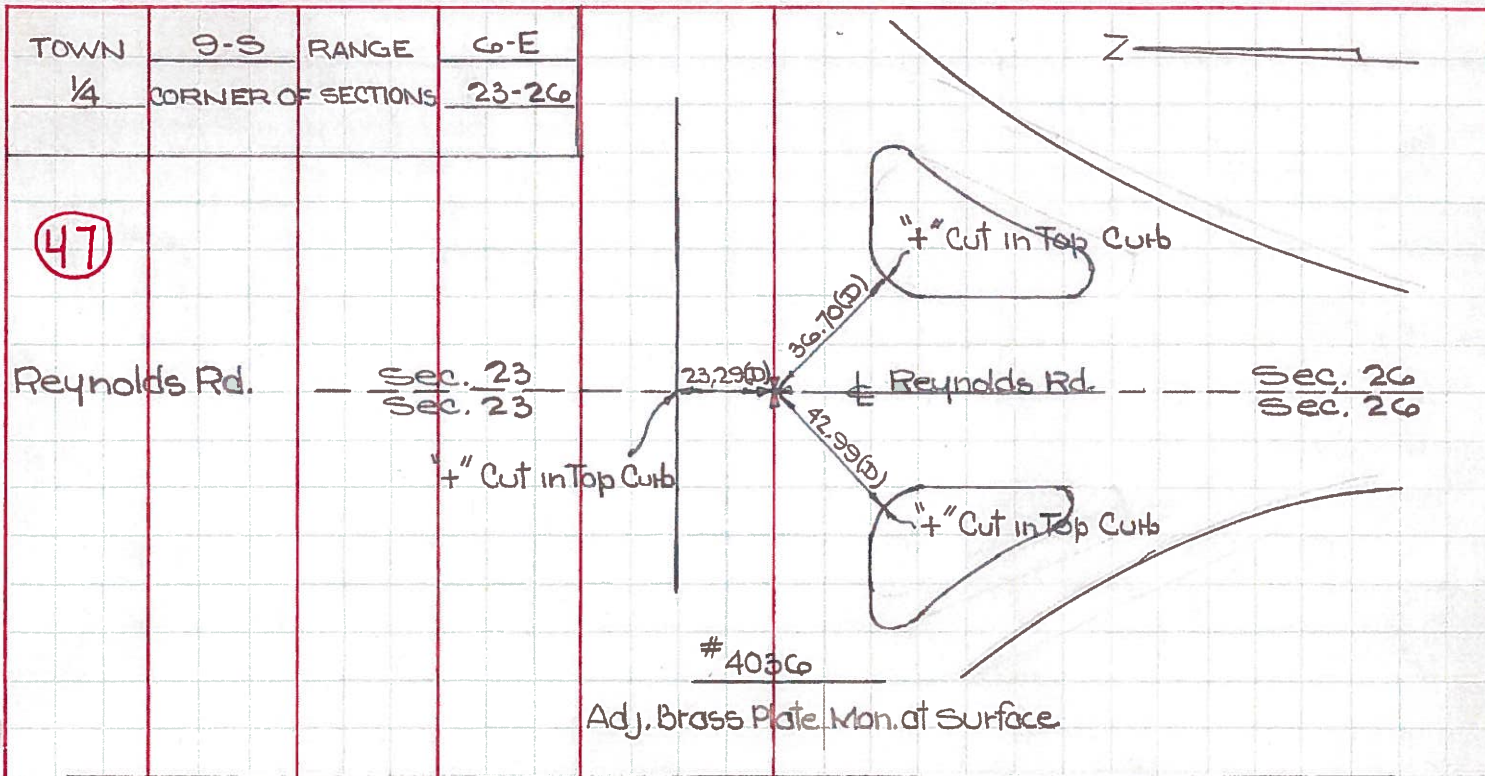
PERSONNEL	TITLE	PERSONNEL	TITLE
D. CURTIS			
D. STEVENS			
R. BRANNAN			

COUNTY LUCAS DATE AUGUST 9, 19
 S. R. U.S. 20 WEATHER SUNNY
 SEC. _____ TEMP. 80°±

DESCRIPTION REFERENCES TO CONTROL POINTS JOB NO. _____
 LEFT CENTER LINE RIGHT



PERSONNEL TITLE PERSONNEL TITLE COUNTY Lucas DATE May 21, 1968
 W. Denno _____
 D. Curtis _____ S. R. 20 WEATHER mild
 J. Teal _____ SEC. _____ TEMP. 55°±
 J. Brindley _____
 DESCRIPTION U.S. 20 (Central Ave) - Ref. Mon. & Control Points JOB NO. 02994(a)
 LEFT CENTER LINE RIGHT



PERSONNEL TITLE PERSONNEL TITLE

COUNTY Lucas

DATE OK 5-2-58

S. R. U.S. #20

WEATHER

SEC.

TEMP.

DESCRIPTION

LEFT

CENTER LINE

RIGHT

JOB NO.

Int. Holland Sylvia Rd.
P.K. Brass Plate
O.K.

#66

43

N.E. to shiner in traffic light Guy pole 44.
S.W. to shiner in traffic light Guy pole 49.
N.W. to + in rim of M.H. back of curb
Ead. 39.2
S.W. to ref. man. 95m 45.0
N.E. to ref. man. 46.3

Int. Reynolds Rd.
O.K. Brass (Adj) Man.

#67

47

S. to shiner in T.P. 22.3
N.E. to shiner in P.P. 64.0
S.E. to X-in top North end Conc. Island 36.7
N. to X-in top of curb 2330 18.3
S.W. to X-in top North end Conc. Island curb 42.9

S.E. cor. sec. 23 R-6-E.
Conc. nail
Brass Man. (Adj)

#68

N.E. to shiner in 36" oak 35.7
S. to shiner in fence post 40.3
S.W. to shiner in fence post 52.8
N.W. to X-S.W. cor. C.B. 23.2
S.E. to spike in T.P. 37.3
S.W. to X-N.W. cor. of C.B. 22.2

Int. Carey Rd.
Brass Man. (Adj)

#69

S.W. to man. wit. marker 43.7
S.E. to spike in cable pole 42.8
S.W. to shiner in 12" Elm 60.6
N.E. to man. wit. marker 42.6