

O.D.O.T. DISTRICT 2 SURVEY OFFICE (USE ONLY)

PERSONNEL

REFERENCE NO. 61

SHEET 15 OF 55

NOTES CURTIS DATE 8/10/71  
H.C. STEVENS WEATHER SUNNY  
R.C. BRANNAN TEMP. 80°

ROUTE US 20  
COUNTY LUCAS  
TOWNSHIP SYLVANIA  
SECTION 35

DWG BY NIESE PID \_\_\_\_\_

T 9 N R 6 E

TYPE MONUMENT MONUMENT BOX

ON SURFACE - ~~BELOW~~ ON

OFFSET 0 PAVEMENT ON LT : RT

- TO - EDGE PAVEMENT

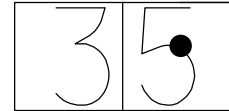
STATION: -

HORIZ.DATUM: \_\_\_\_\_

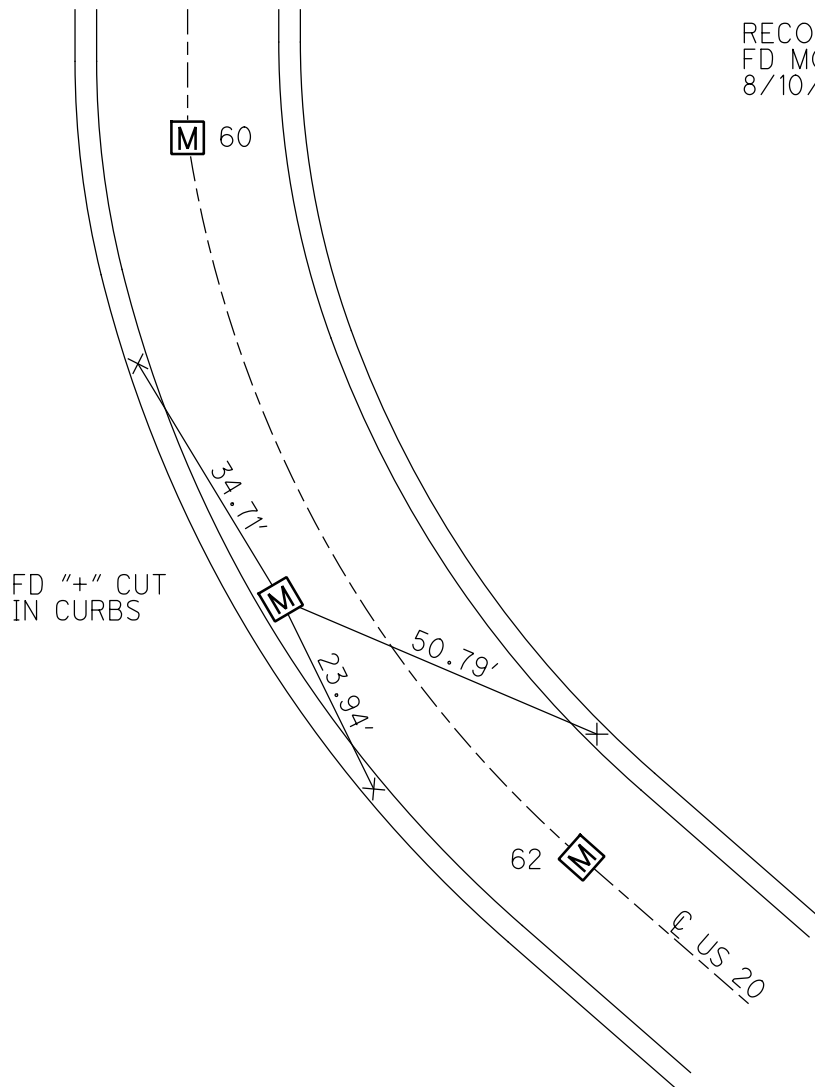
GEOID: \_\_\_\_\_

GRID: NORTHING: \_\_\_\_\_

EASTING: \_\_\_\_\_



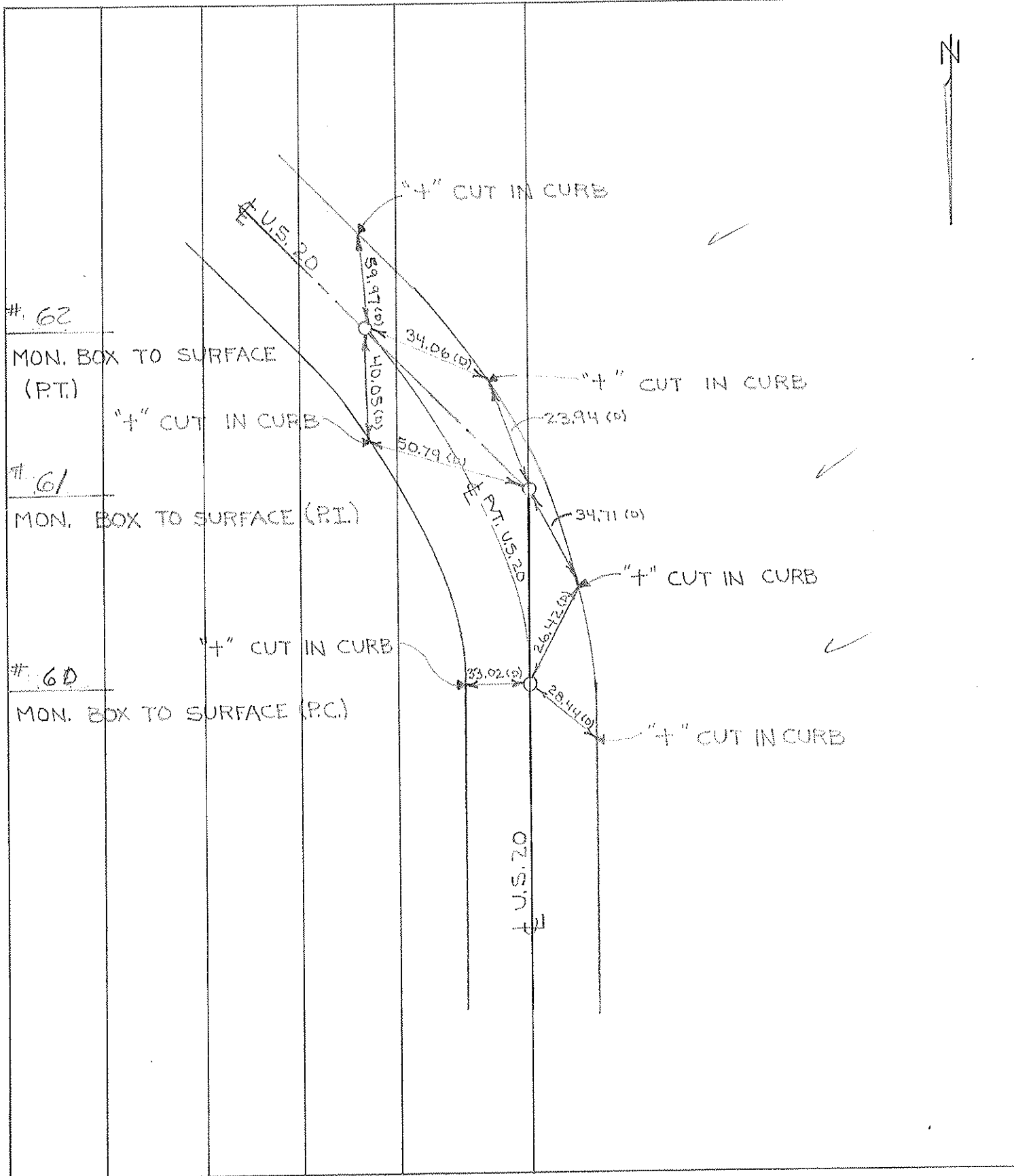
RECORD: P.I.  
FD MONBOX  
8/10/71, DC



PERSONNEL	TITLE	PERSONNEL	TITLE
D. CURTIS			
D. STEVENS			
R. BRANNAN			

COUNTY LUCAS DATE AUGUST 10, 1971  
 S. R. U.S. 20 WEATHER SUNNY  
 SEC. \_\_\_\_\_ TEMP. 80°±

DESCRIPTION REFERENCES TO CONTROL POINTS JOB NO. \_\_\_\_\_  
 LEFT CENTER LINE RIGHT



PERSONNEL TITLE PERSONNEL TITLE

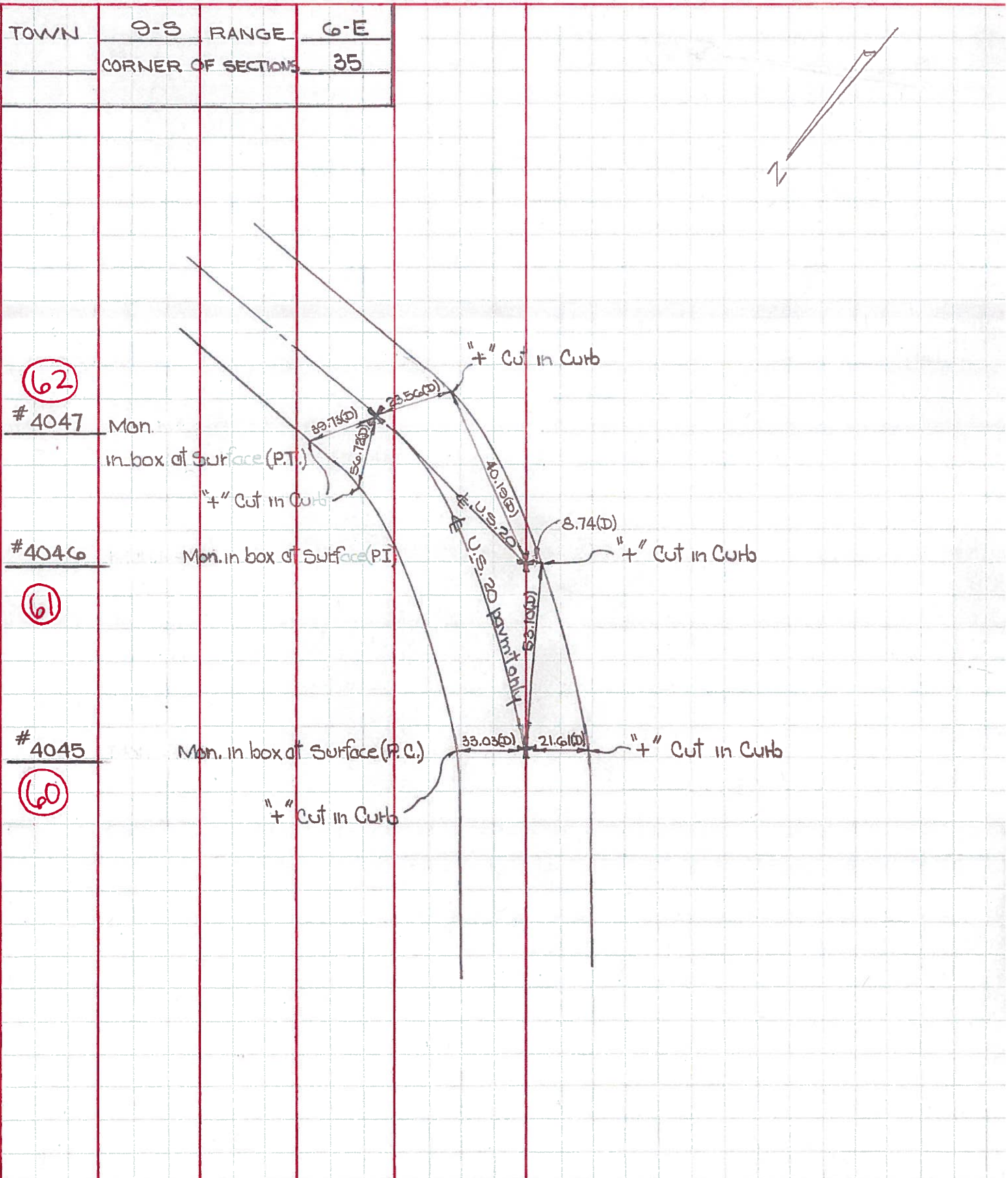
COUNTY Lucas DATE May 22, 1968

D. Curtis S. R. 20 WEATHER mild

J. Teal

J. Brindley SEC. TEMP. 55°±

DESCRIPTION U.S. 20 (Reynolds Rd.) - Ref. Mon. & Control Points JOB NO. 02994(0)



TOWN	9-3	RANGE	6-E
	CORNER OF SECTIONS		35

(62)  
#4047 Mon.

in box at Surface (P.T.)

#4046

Mon. in box at Surface (P.I.)

(61)

#4045

Mon. in box at Surface (P.C.)

(60)

"+" Cut in Curb

"+" Cut in Curb

"+" Cut in Curb

"+" Cut in Curb

U.S. 20 (Private)

PERSONNEL TITLE PERSONNEL TITLE

COUNTY Lucas

DATE May 3, 1966

Denna

Curtis

Granata

Omey

S. R.

WEATHER Sunny

SEC.

TEMP 50°

DESCRIPTION Monumenting US 20-23 US 24-25 by Pass

JOB NO. \_\_\_\_\_

LEFT

CENTER LINE

RIGHT

(At Glann School)

60

61

62

