

O.D.O.T. DISTRICT 2 SURVEY OFFICE (USE ONLY)

PERSONNEL _____ REFERENCE NO. 62 SHEET 16 OF 55
NOTES CURTIS DATE 8/10/71 ROUTE US 20
H.C. STEVENS WEATHER SUNNY COUNTY LUCAS
R.C. BRANNAN TEMP. 80° TOWNSHIP SYLVANIA
SECTION 35
DWG BY NIESE PID _____ T 9 N R 6 E

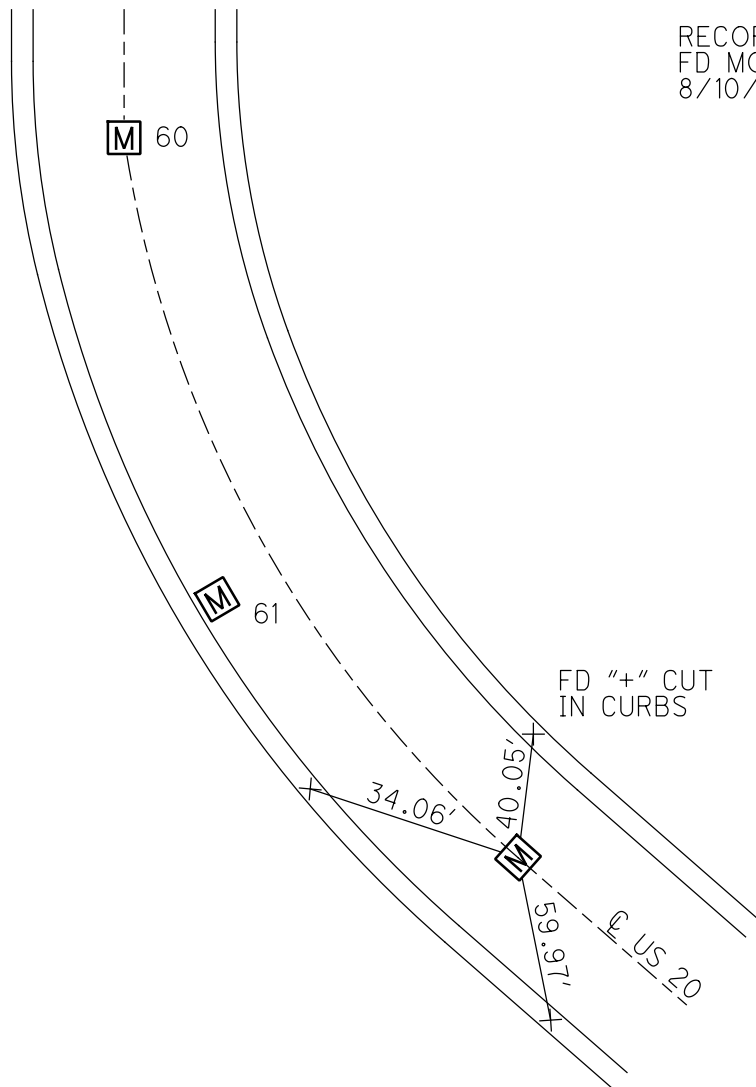
TYPE MONUMENT MONUMENT BOX
ON SURFACE - ~~BELOW~~ ON
OFFSET \varnothing PAVEMENT ON LT : RT
- TO - EDGE PAVEMENT
STATION: -

35



HORIZ.DATUM: _____ GEOID: _____
GRID: NORTHING: _____ EASTING: _____

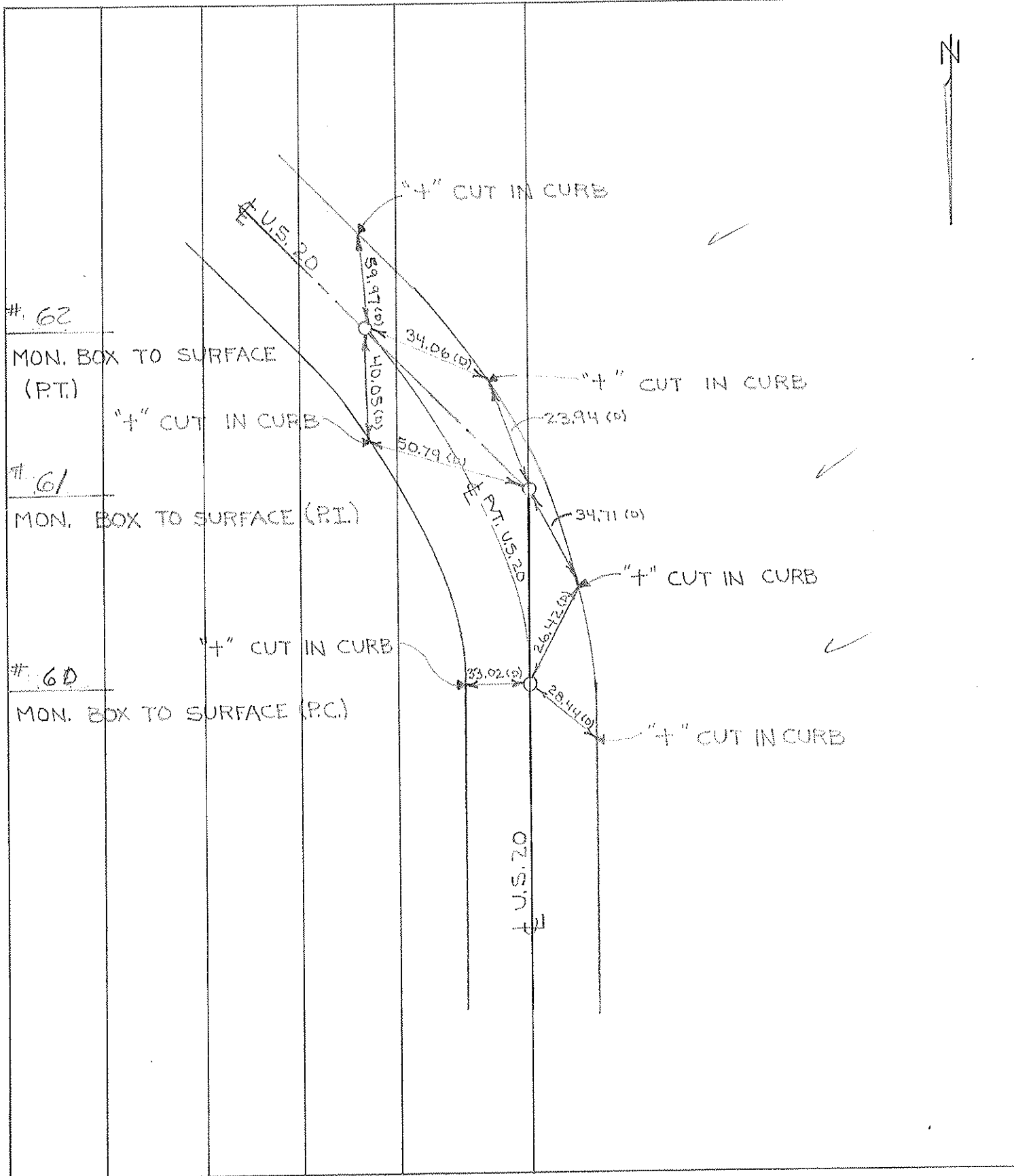
RECORD: P.T.
FD MONBOX
8/10/71, DC



PERSONNEL	TITLE	PERSONNEL	TITLE
<u>D. CURTIS</u>	_____	_____	_____
<u>D. STEVENS</u>	_____	_____	_____
<u>R. BRANNAN</u>	_____	_____	_____

COUNTY LUCAS DATE AUGUST 10, 1971
 S. R. U.S. 20 WEATHER SUNNY
 SEC. _____ TEMP. 80°±

DESCRIPTION REFERENCES TO CONTROL POINTS JOB NO. _____
LEFT CENTER LINE RIGHT



#. 62

MON. BOX TO SURFACE (P.T.)

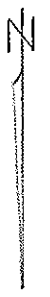
#. 61

MON. BOX TO SURFACE (P.I.)

#. 60

MON. BOX TO SURFACE (P.C.)

U.S. 20



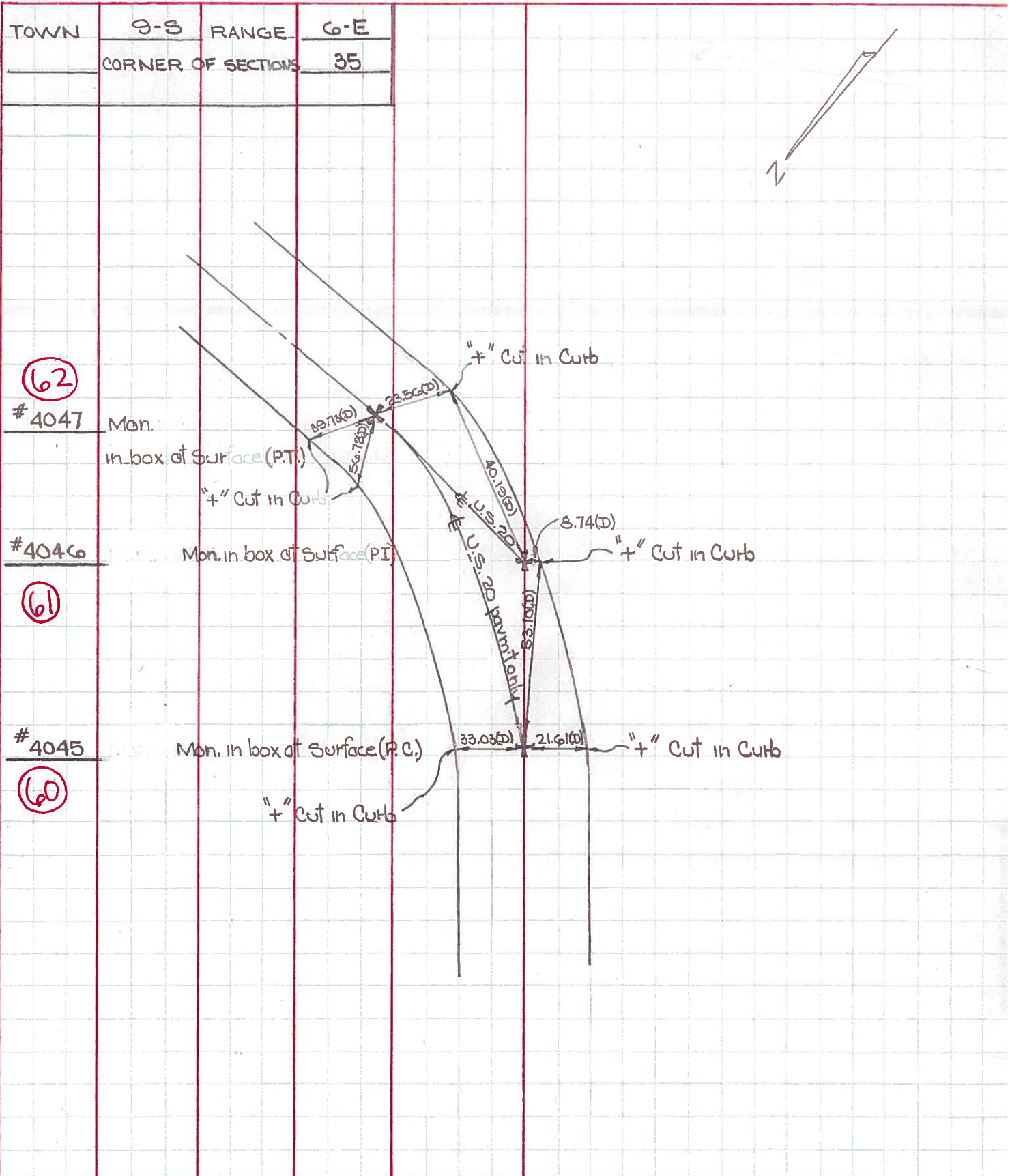
PERSONNEL TITLE PERSONNEL TITLE

COUNTY Lucas DATE May 22, 1968

D. Curtis
 J. Teal
 J. Brindley

S. R. 20 WEATHER mild
 SEC. TEMP. 55° ±

DESCRIPTION U.S. 20 (Reynolds Rd.) - Ref. Mon. & Control Points JOB NO. 02994(0)



(62)

#4047

Mon. in box of Surface (P.T.)

(61)

#4046

Mon. in box of Surface (P.I.)

(60)

#4045

Mon. in box of Surface (P.C.)

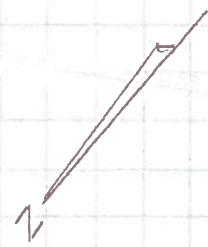
"+" Cut in Curb

"+" Cut in Curb

"+" Cut in Curb

"+" Cut in Curb

"+" Cut in Curb



PERSONNEL TITLE PERSONNEL TITLE

Denno _____
 Curtis _____
 Grnata _____
 Oney _____

COUNTY Lucas DATE May 3, 1966

S. R. _____ WEATHER Sunny

SEC. _____ TEMP. 50°

DESCRIPTION Monumenting US 20-23 vs 24-25 by Pass JOB NO. _____

LEFT CENTER LINE RIGHT

(At Glahn School)

- (60)
- (61)
- (62)

