

O.D.O.T. DISTRICT 2 SURVEY OFFICE (USE ONLY)

PERSONNEL _____

REFERENCE NO. 68

SHEET 22 OF 55

NOTES NIESE DATE 12/9/21

ROUTE US 20

H.C. AUBLE WEATHER FAIR

COUNTY LUCAS

R.C. _____ TEMP. 39°

TOWNSHIP 12 MILE RESERVE

SECTION 1

DWG BY NIESE PID 110490

T 2 US R E

TYPE MONUMENT MONBOX W/STONE

ON SURFACE - ~~BELOW~~ ON

OFFSET \varnothing PAVEMENT ON LT : RT

- TO - EDGE PAVEMENT

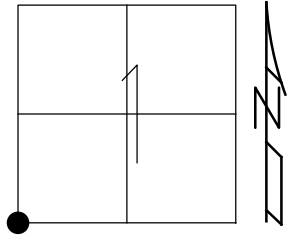
STATION: 708+05

HORIZ.DATUM: NAD83(2011)

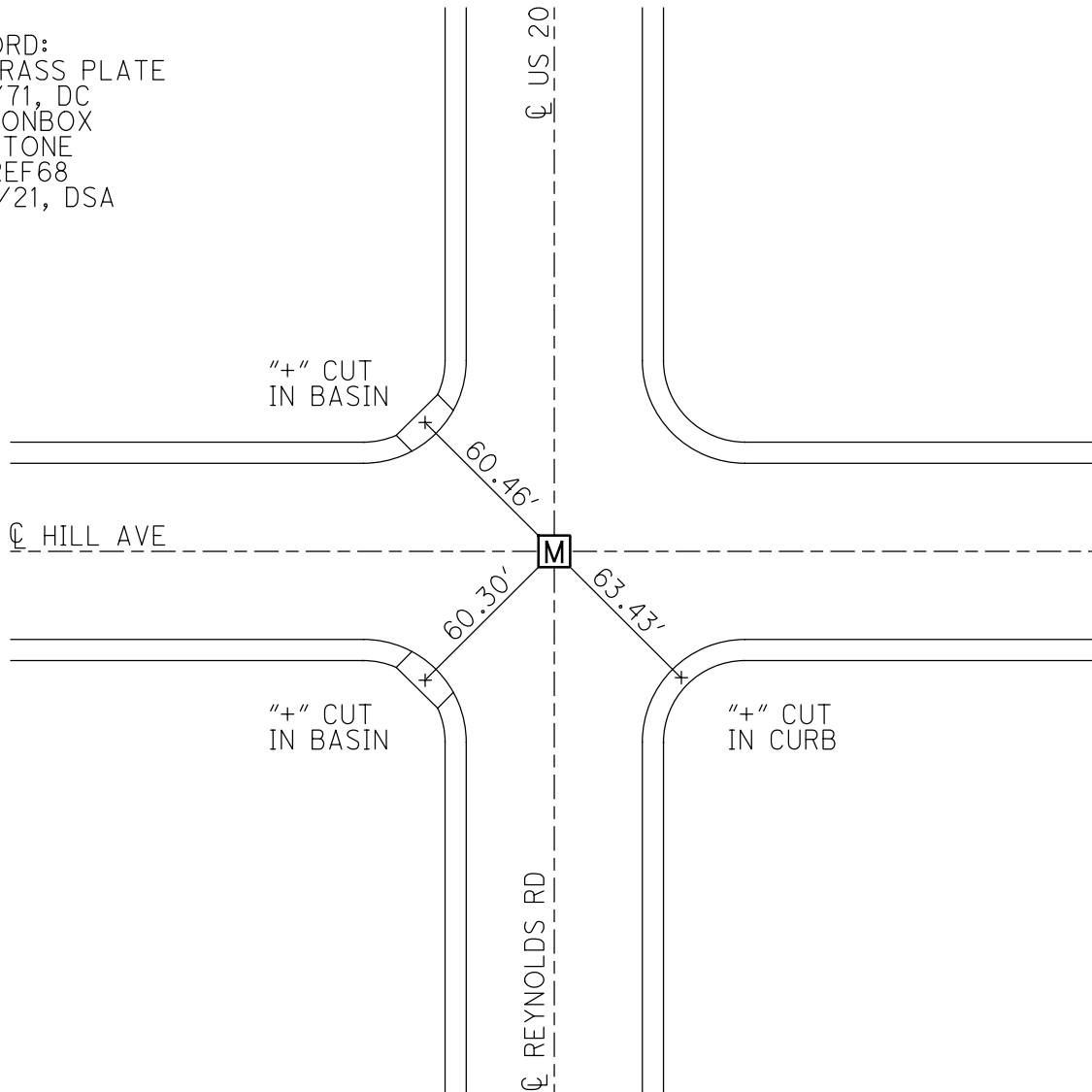
GEOID: NAVD88 2012A

GRID: NORTHING: 720586.732

EASTING: 1650188.811



RECORD:
FD BRASS PLATE
8/11/71, DC
FD MONBOX
W/ STONE
NEWREF68
12/9/21, DSA



O.D.O.T. DISTRICT 2 SURVEY OFFICE (USE ONLY)

PERSONNEL _____

REFERENCE NO. 68

SHEET 22 OF 55

NOTES CURTIS
 H.C. STEVENS
 R.C. BRANNAN

DATE 8/11/71
 WEATHER FAIR
 TEMP. 75°

ROUTE US 20
 COUNTY LUCAS
 TOWNSHIP 12 MILE RESERVE
 SECTION 1
 T 2 US R E

DWG BY NIESE PID _____

TYPE MONUMENT BRASS PLATE

ON SURFACE - ~~BELOW~~ ON

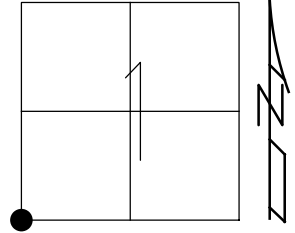
OFFSET ϕ PAVEMENT ON LT : RT

- TO - EDGE PAVEMENT

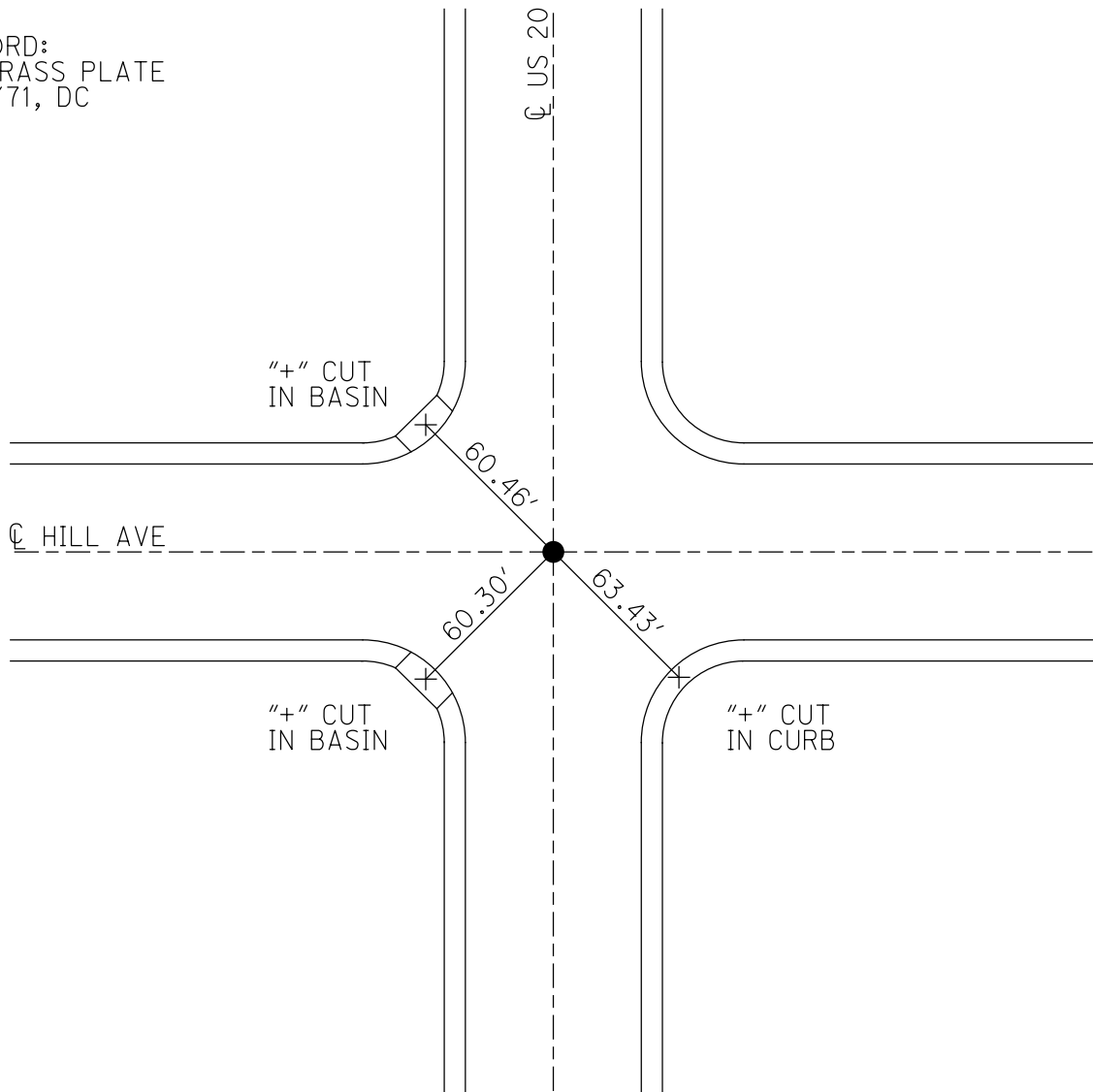
STATION: 708+05

HORZ.DATUM: _____ GEOID: _____

GRID: NORTHING: _____ EASTING: _____



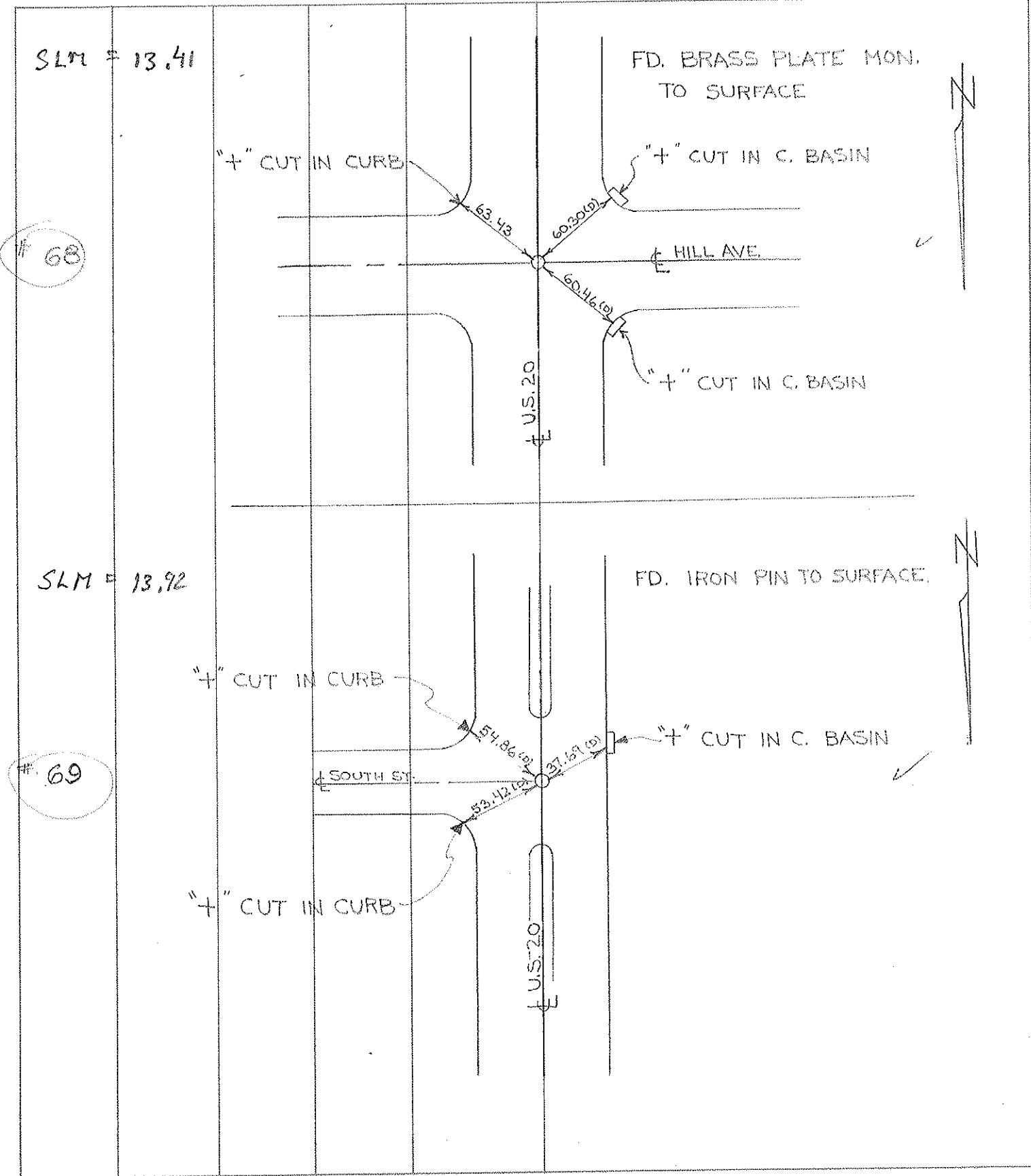
RECORD:
 FD BRASS PLATE
 8/11/71, DC



PERSONNEL	TITLE	PERSONNEL	TITLE
D. CURTIS			
D. STEVENS			
R. BRANNAN			

COUNTY LUCAS DATE AUGUST 11, 1971
 S. R. U.S. 20 WEATHER FAIR
 SEC. _____ TEMP. 75°±

DESCRIPTION REFERENCES TO CONTROL POINTS JOB NO. _____
 LEFT CENTER LINE RIGHT



PERSONNEL TITLE PERSONNEL TITLE
 D. Curtis _____
 J. Teal _____
 J. Brindley _____

COUNTY Lucas DATE May 23, 1968
 S. R. 20 WEATHER mild
 SEC. _____ TEMP. 60°±

DESCRIPTION U.S. 20 (Reynolds Rd) - Ref. Mon. & Control Points JOB NO. 02994(a)

