

O.D.O.T. DISTRICT 2 SURVEY OFFICE (USE ONLY)

PERSONNEL

REFERENCE NO. 69

SHEET 23 OF 55

NOTES CURTIS

DATE 8/11/71

ROUTE US 20

H.C. STEVENS

WEATHER FAIR

COUNTY LUCAS

R.C. BRANNAN

TEMP. 75°

TOWNSHIP 12 MILE RESERVE

DWG BY NIESE PID _____

SECTION 12

T 2 US R E

TYPE MONUMENT IRON PIN

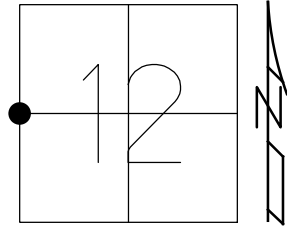
ON SURFACE - ~~BELOW~~ ON

OFFSET ☉ PAVEMENT ON LT : RT
- TO - EDGE PAVEMENT

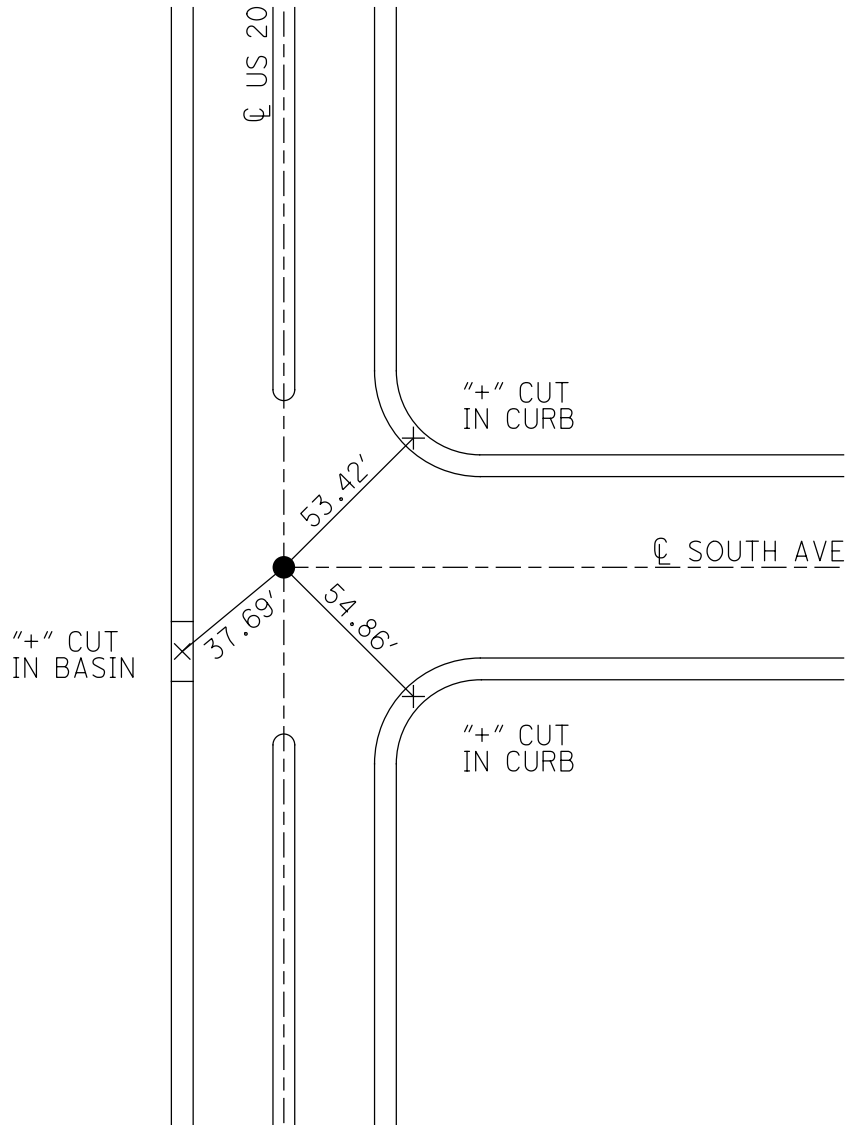
STATION: 734+98

HORZ.DATUM: _____ GEOID: _____

GRID: NORTHING: _____ EASTING: _____



RECORD:
 FD IPIN
 8/11/71, DC



PERSONNEL	TITLE	PERSONNEL	TITLE
D. CURTIS			
D. STEVENS			
R. BRANNAN			

COUNTY LUCAS

DATE AUGUST 11, 1971

S. R. U.S. 20

WEATHER FAIR

SEC.

TEMP 75°±

DESCRIPTION REFERENCES TO CONTROL POINTS

JOB NO.

LEFT CENTER LINE RIGHT

SLM = 13.41

68

"+" CUT IN CURB

FD. BRASS PLATE MON. TO SURFACE

"+" CUT IN C. BASIN

63.43

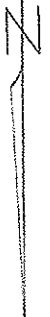
60.30 (5)

60.46 (5)

HILL AVE

U.S. 20

"+" CUT IN C. BASIN



SLM = 13.92

69

"+" CUT IN CURB

FD. IRON PIN TO SURFACE

"+" CUT IN C. BASIN

54.86 (5)

37.69 (5)

53.42 (5)

SOUTH ST.

U.S. 20

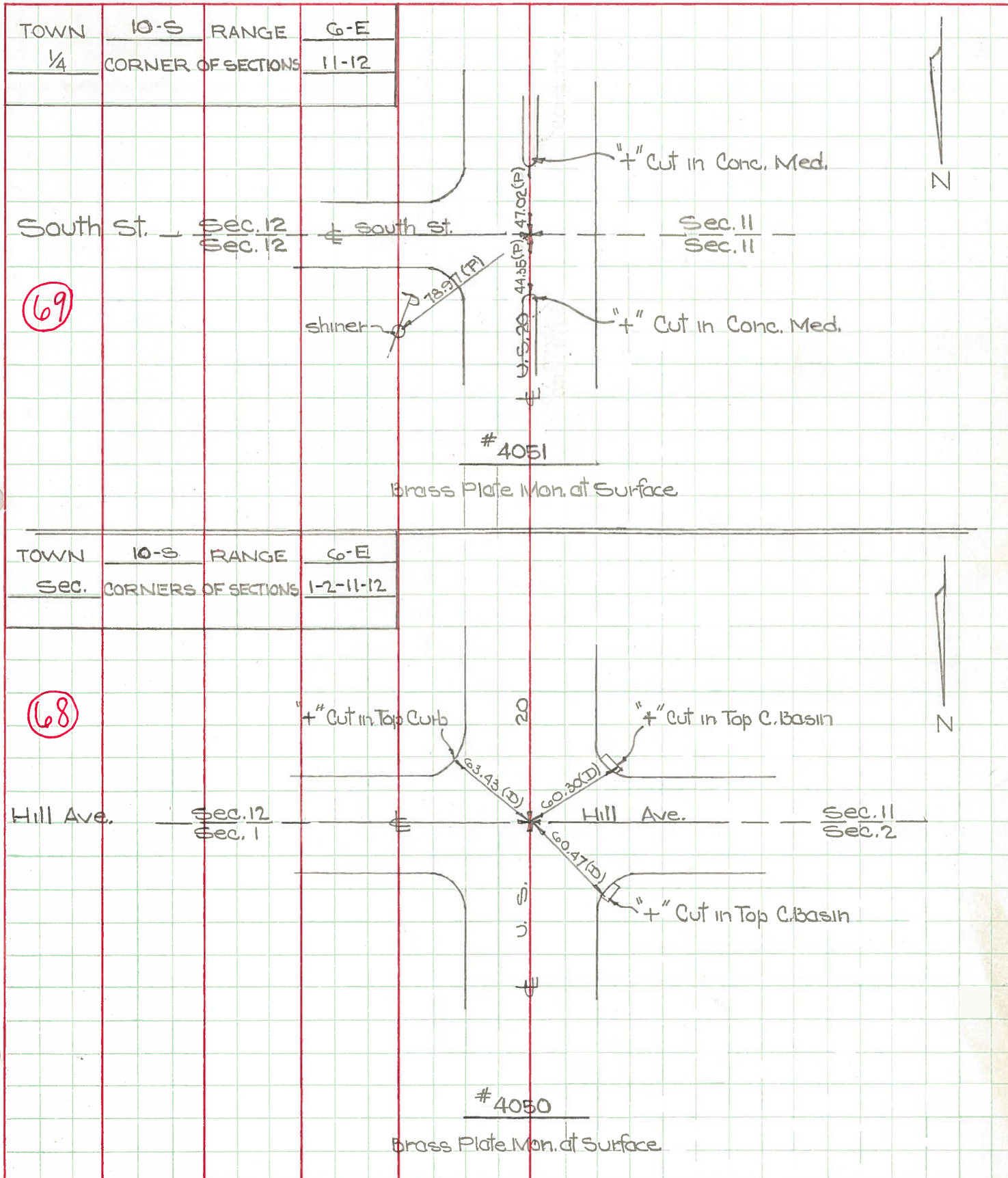
"+" CUT IN CURB



PERSONNEL TITLE PERSONNEL TITLE
 D. Curtis _____
 J. Teal _____
 J. Brindley _____

COUNTY Lucas DATE May 23, 1968
 S. R. 20 WEATHER mild
 SEC. _____ TEMP. 60°±

DESCRIPTION U.S. 20 (Reynolds Rd) - Ref. Mon. & Control Points JOB NO. 02994(a)



PERSONNEL TITLE PERSONNEL TITLE

COUNTY Lucas DATE 5 April 6

Stine
Ack
Bridlow
Schroder

S. R. #20 WEATHER Cool
 SEC. Reynolds Rd. TEMP. 45°

DESCRIPTION Rpts. To Control Pts. JOB NO.

LEFT CENTER LINE RIGHT

DESCRIPTION	LEFT	CENTER LINE	RIGHT
✓ #472 Searched For Could Not Find			
✓ #473 Searched For Could Not Find			
✓ #474 69 Int. South St. Fd. Brass Cap Mon. To Surface		44.34' 46.98' 78.90'	N. To "f" on Gen. Med. (D) S. To "f" on Gen. Med. (D) N.E. To Shiner in P.P. (D)
✓ #475 Int. Hill Ave.			