

O.D.O.T. DISTRICT 2 SURVEY OFFICE (USE ONLY)

PERSONNEL

REFERENCE NO. 75

SHEET 29 OF 55

NOTES CURTIS

DATE 8/12/71

ROUTE US 20

H.C. STEVENS

WEATHER SUNNY

COUNTY LUCAS

R.C. BRANNAN

TEMP. 75°

TOWNSHIP 12 MILE RESERVE

DWG BY NIESE

PID \_\_\_\_\_

SECTION 13

T 2 US R E

TYPE MONUMENT BRASS MOBORA

ON SURFACE - ~~BELOW~~ ON

OFFSET CL PAVEMENT ON LT : RT

- TO - EDGE PAVEMENT

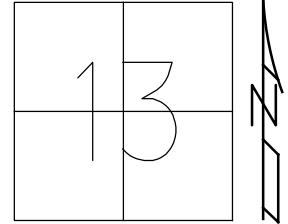
STATION: 788+83

HORZ. DATUM: \_\_\_\_\_

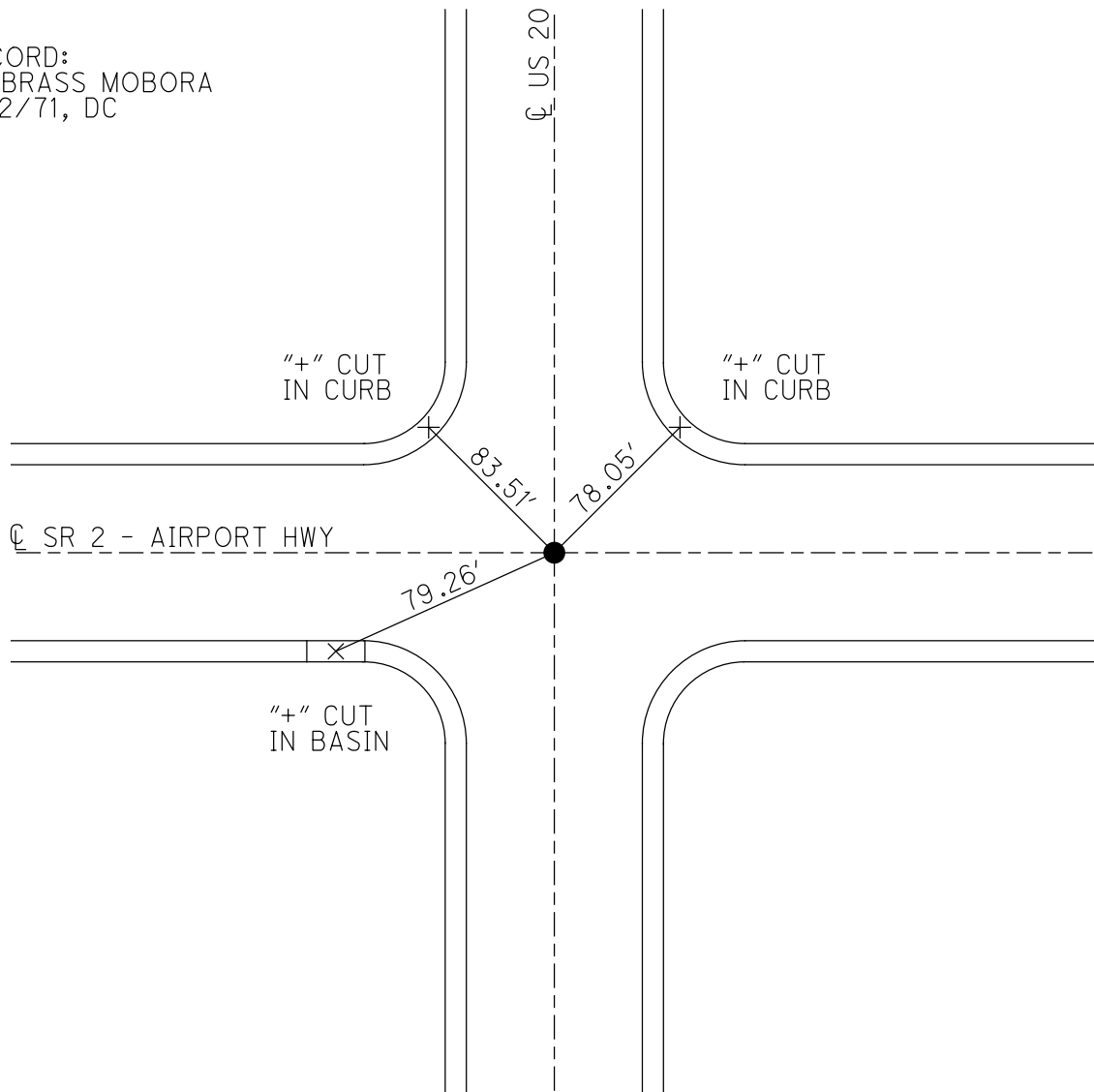
GEOID: \_\_\_\_\_

GRID: NORTHING: \_\_\_\_\_

EASTING: \_\_\_\_\_



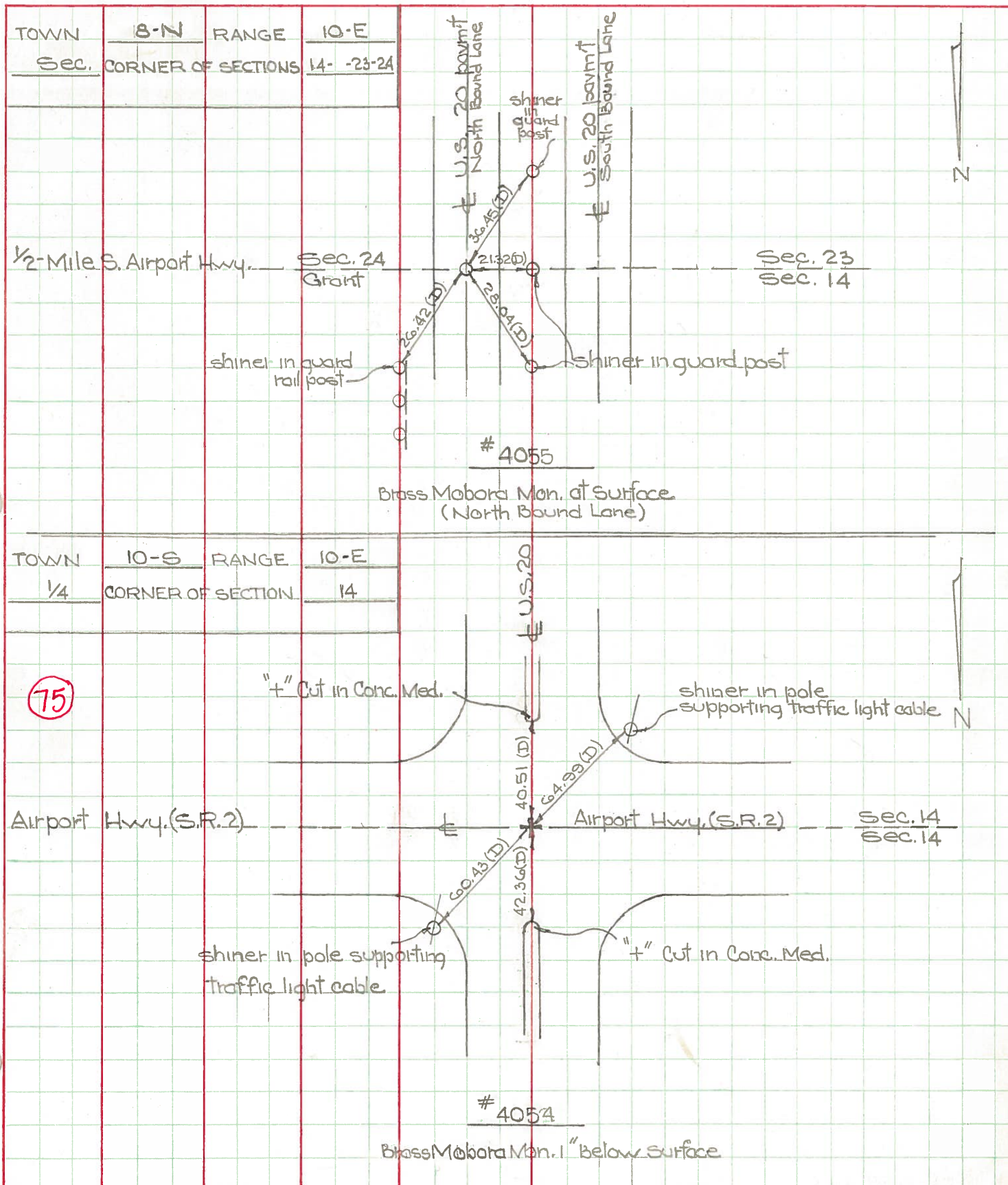
RECORD:  
FD BRASS MOBORA  
8/12/71, DC



PERSONNEL TITLE PERSONNEL TITLE  
 D. Curtis \_\_\_\_\_  
 J. Teal \_\_\_\_\_  
 J. Brindley \_\_\_\_\_

COUNTY Lucas DATE May 23, 1966  
 S. R. 20 WEATHER mild  
 SEC. \_\_\_\_\_ TEMP. 50°±

DESCRIPTION U.S. 20 (Reynolds Rd) - Ref. Mon. & Control Points JOB NO. 02994 (0)



PERSONNEL TITLE PERSONNEL TITLE COUNTY Lucas DATE 5 April 66  
 Spore \_\_\_\_\_  
 Berk \_\_\_\_\_ S. R. #20 WEATHER Cool  
 Brindley \_\_\_\_\_  
 Schroder \_\_\_\_\_ SEC. Reynolds Rd. TEMP. 40°

DESCRIPTION Rts. To Central Pts. JOB NO.  
 LEFT CENTER LINE RIGHT

#467 E & W Sec. 25 & 26 41.59' ✓ E. To Shiner in P.P. (D)  
 Fd. Mabong Man. 63.26' ✓ S.E. To "f" in Cons. Light Pole Base  
 & N.B. Lane - 20 21.93' ✓ W. To Shiner in Wood Post (D)  
 1" Below Surface 92.24' ✓ W. To Shiner in Multiple Trce (D)

82

#468 Int. Heatherdowns Rd. 49.88' S.E. To Shiner in P.P. (D)  
 & N.B. Lane - 20 54.28' S.W. To Chiseled "f" on Cons. Med.  
 Fd. Mabong 52.69' N.W. To Chiseled "f" on Cons. Med.  
 To Surface 56.07' E. To L.P. on B.P. (D)  
 out  
 out ~~41.83' S.E. To Chiseled "f" on Cons. Med.~~

81

#469 Int. Ryan Rd. 46.71' N.E. To Shiner in P.P. (D)  
 & N.B. Lane - 20 52.60' N.W. To Chiseled "f" in Med. (D)  
 Fd. Mabona 53.83' S.W. To Chiseled "f" in Med. (D)  
 To Surface

79

#470 N. Line Sec. 23 & 24 26.39' E.W.E. To Shiner in End Guard Post  
 Fd. Mabong 21.32' W. To Shiner in Guard Post (D)  
 To Surface 28.04' N.W. To Shiner in Guard Post (D)  
 N.B. Lane - 20 36.45' S.W. To Shiner in Guard Post (D)

#471 Int. S.R. #2 & 5 60.43' N.E. To Shiner in L. Pole (D)  
 US #20 64.99' S.W. To Shiner in L. Pole (D)  
 Fd. Mabona 72.36' N. To "f" on Cons. Med. (D)  
 1" Below Surface 40.51' S. To "f" on Cons. Med. (D)

75



PERSONNEL	TITLE	PERSONNEL	TITLE	COUNTY	DATE
Trude				Lucas	
Veuser				S. H. S. R. #20	WEATHER
Box				SEC. From S. R. #2 - Maumee	TEMP.

DESCRIPTION	LEFT	CENTER LINE	RIGHT
-------------	------	-------------	-------

Begin Stationing at Intersection of Rt. #2 & Rt. #20 with Sta. 790+41.6

Sta. Equations at Monuments:

Sta. 817+16.85 Bck. = Sta. 817+15.35 Ah. (Section Line)

Sta. 843+89.80 Bck. = Sta. 843+89.95 Ah. (Ryan Rd.)

Sta. 870+55.54 Bck. = Sta. 870+54.90 Ah. (Heather Downs Blvd.)

Sta. 897+35.30 Bck. = Sta. 897+34.60 Ah. (Section Line)

New Curve Data:

1° Curve

$\Delta = 22^\circ 43'$

$T = 1151.0'$

$R = 5729.58'$

arc = 2,271.67

P.C. = 901+84.15

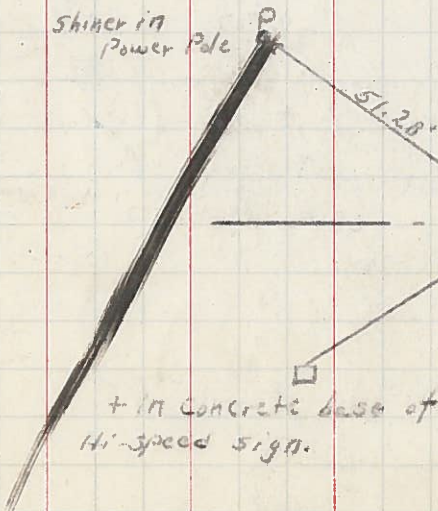
P.I. = 913+37.15

P.T. = 924+57.82

Monument References:

Sta. 790+41.6 (Brass Plate)

Shiner in Power Pole



15