

O.D.O.T. DISTRICT 2 SURVEY OFFICE (USE ONLY)

PERSONNEL _____

REFERENCE NO. 75 A

SHEET 30 OF 55

NOTES LOEHRKE

DATE 9/8/97

ROUTE US 20

H.C. CORDES

WEATHER FAIR

COUNTY LUCAS

R.C. _____

TEMP. 68°

TOWNSHIP 12 MILE RESERVE

SECTION 13

DWG BY NIESE

PID _____

T 2 US R E

TYPE MONUMENT BRASS PLUG

ON SURFACE - ~~BELOW~~ ON

OFFSET \bar{C} PAVEMENT _____ LT : RT

14.25' TO LT ~~EDGE PAVEMENT~~ FACE OF CURB

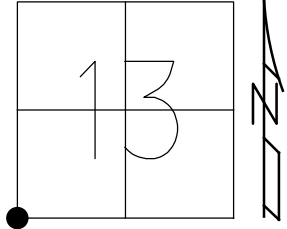
STATION: _____

HORZ. DATUM: _____

GEOID: _____

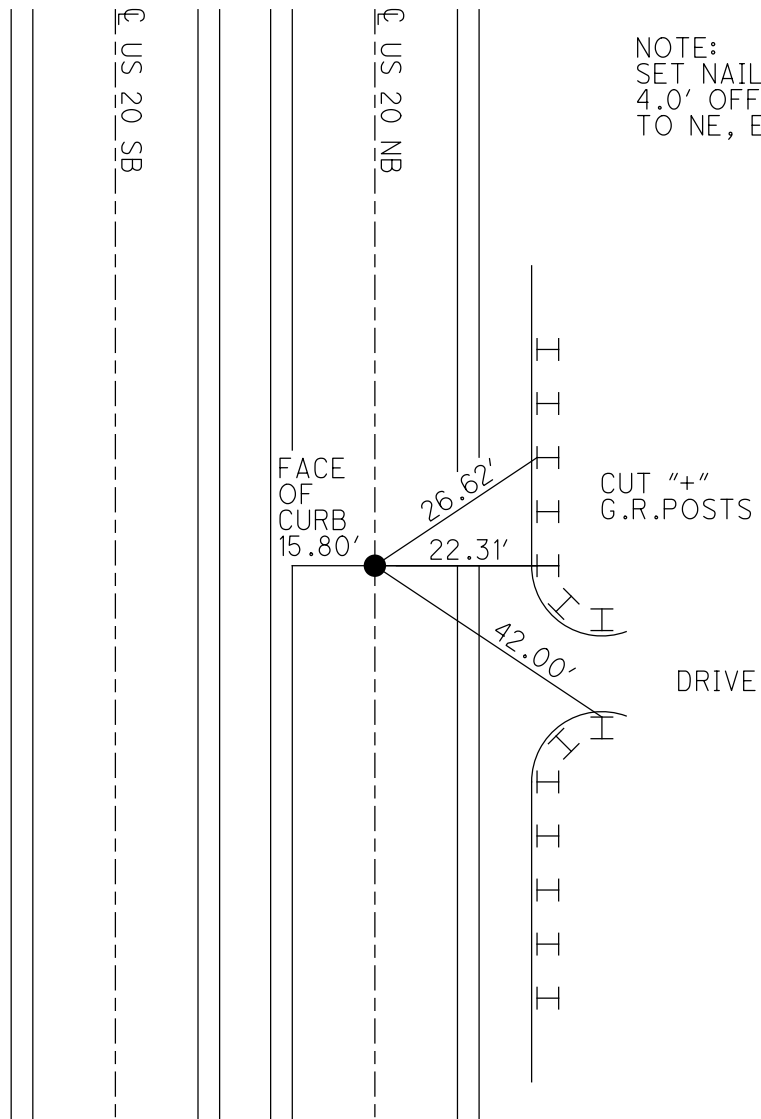
GRID: NORTHING: _____

EASTING: _____



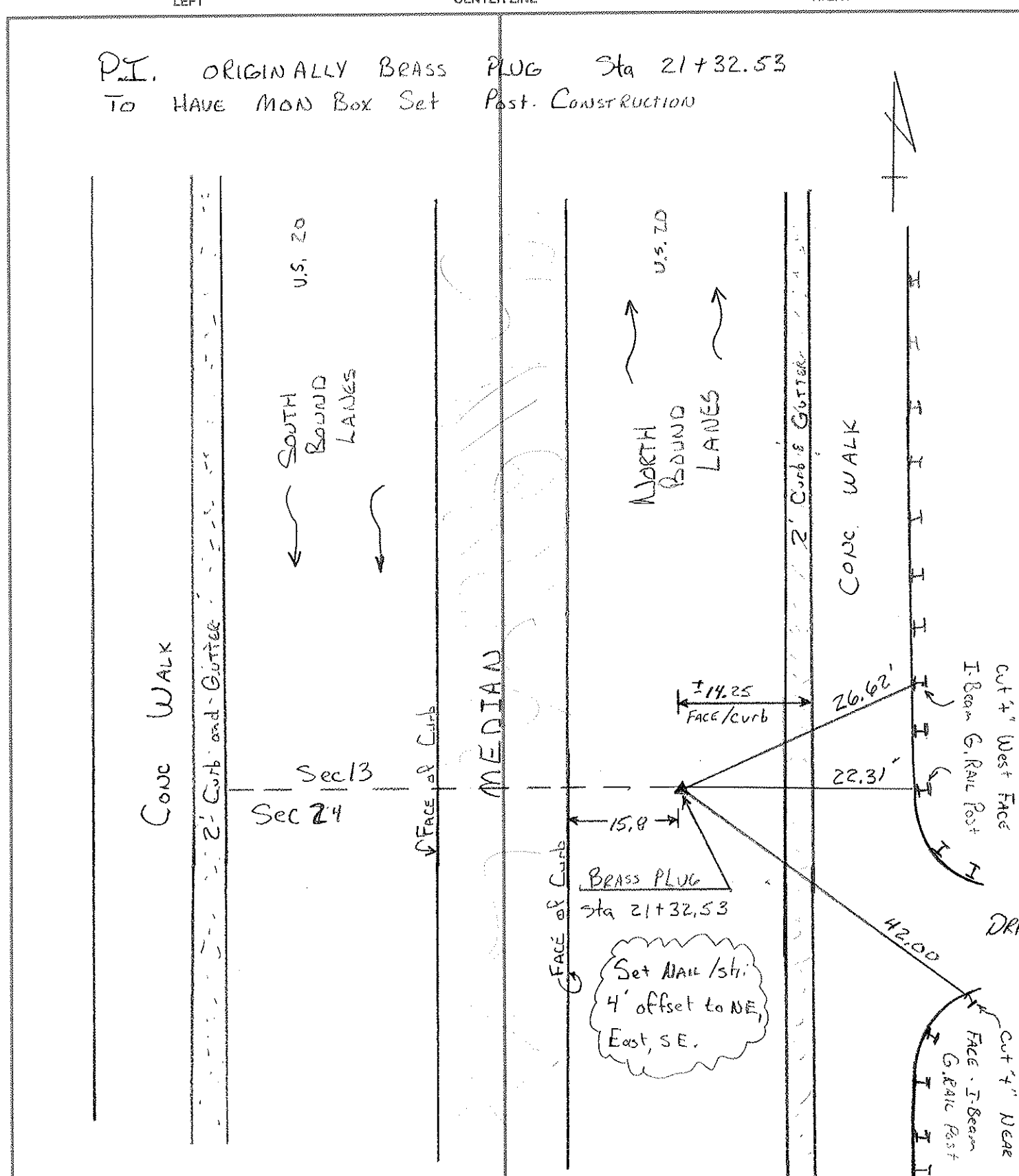
RECORD: P.I.
STA 21+32.53
D.N.F.
8/12/71, DC
BRASS PLUG
MONBOX TO BE SET
9/8/97, CL

NOTE:
SET NAIL/SHI'S
4.0' OFFSETS
TO NE, EAST, SE



PERSONNEL	TITLE	PERSONNEL	TITLE	COUNTY	DATE
GEHRKE				Luc	9-8-97
CORDES				S.R. 20	WEATHER FAIR
				SEC. 14.94	TEMP. 76.8

DESCRIPTION Reset Pt - REF. off sets to Set Mon. Box JOB NO. _____



P.I. ORIGINALLY BRASS PLUG Sta 21+32.53
 TO HAVE MON Box Set Post. Construction

CONC WALK

SOUTH BOUND LANES

NORTH BOUND LANES

MEDIAN

CONC. WALK

Cut 4" West Face I-Beam G. Rail Post

DRIVE

Cut 4" NEAR FACE I-Beam G. Rail Post

BRASS PLUG Sta 21+32.53

Set Nail 1/4" 4' offset to NE, East, SE.

Sec 13
 Sec 24

FACE of Curb

FACE of Curb

±14.25
 FACE/curb

15.8

26.62'

22.31'

42.00