

O.D.O.T. DISTRICT 2 SURVEY OFFICE (USE ONLY)

PERSONNEL _____

REFERENCE NO. 77

SHEET 31 OF 55

NOTES LOEHRKE

DATE 9/11/97

ROUTE US 20

H.C. HUSS

WEATHER _____

COUNTY LUCAS

R.C. _____

TEMP. 64°

TOWNSHIP 12 MILE RESERVE

DWG BY NIESE

PID _____

SECTION 24

T 2 US R E

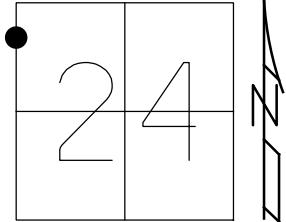
TYPE MONUMENT SM.R.R. SPIKE

ON SURFACE - ~~BELOW~~ ON

OFFSET \varnothing PAVEMENT 0.7' ~~LT~~ : RT CROWN OF N.B. LANES

- TO - EDGE PAVEMENT

STATION: 820+51



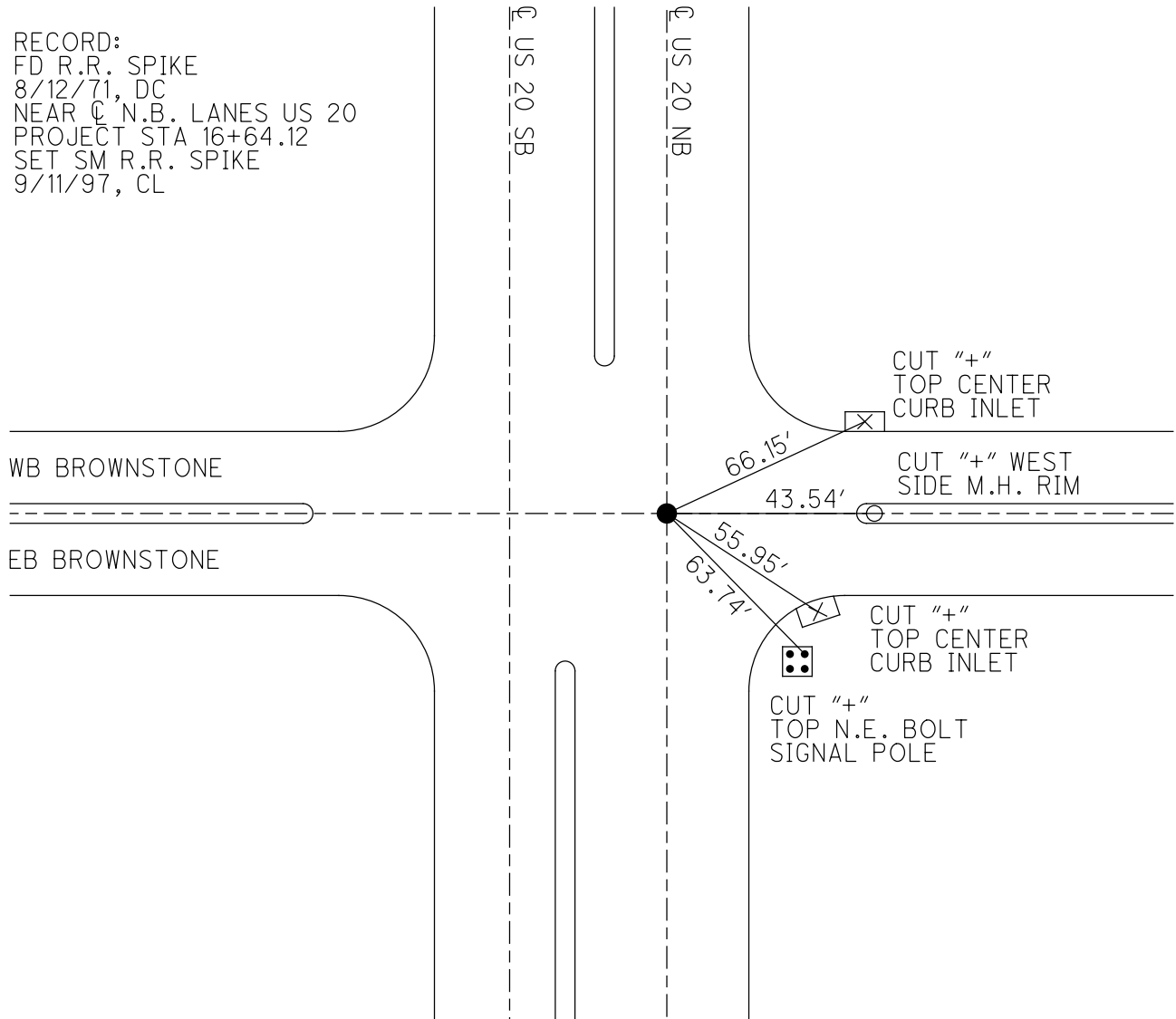
HORZ.DATUM: _____

GEOID: _____

GRID: NORTHING: _____

EASTING: _____

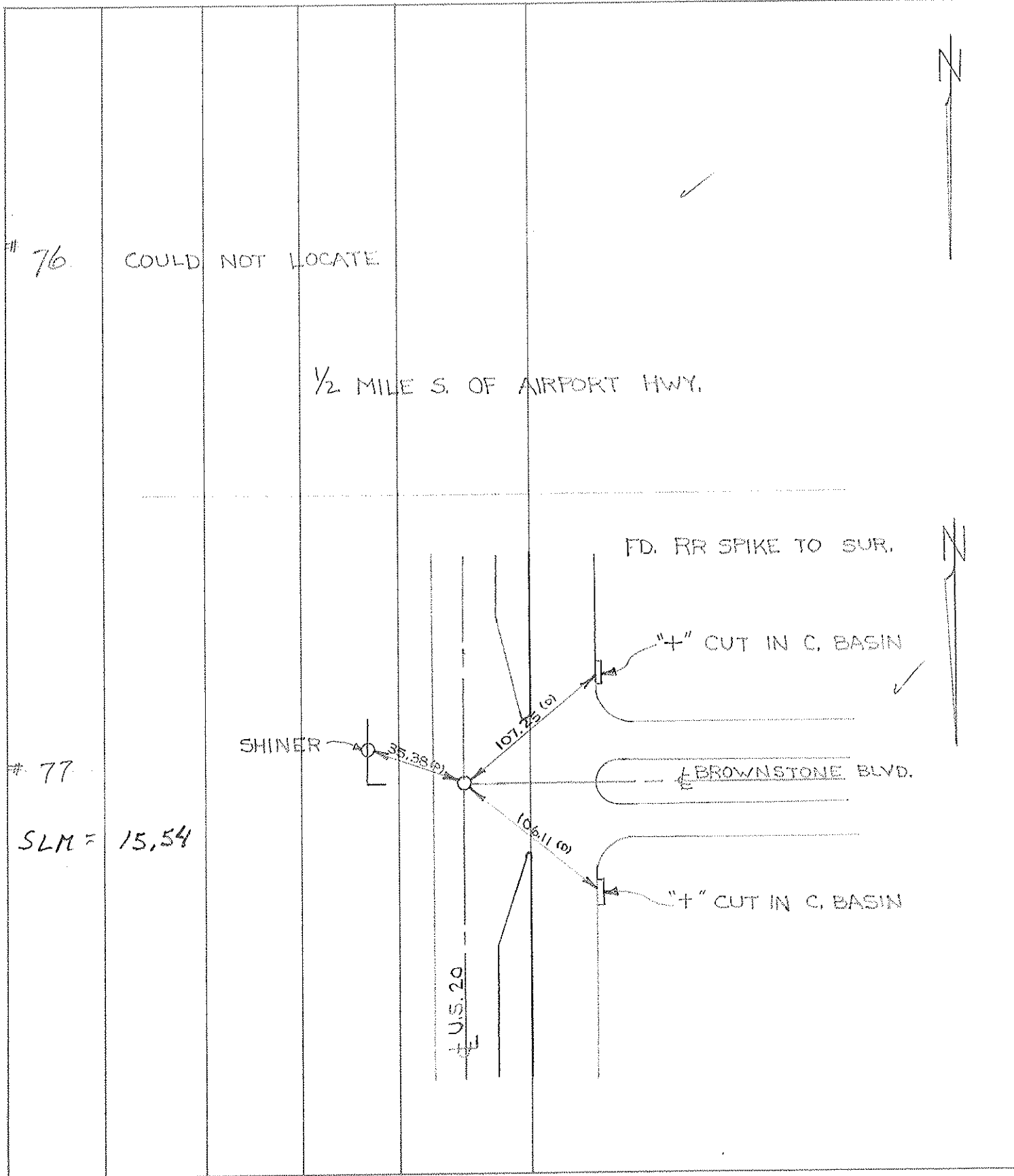
RECORD:
FD R.R. SPIKE
8/12/71, DC
NEAR \varnothing N.B. LANES US 20
PROJECT STA 16+64.12
SET SM R.R. SPIKE
9/11/97, CL



PERSONNEL	TITLE	PERSONNEL	TITLE
D. CURTIS			
D. STEVENS			
R. BRANNAN			

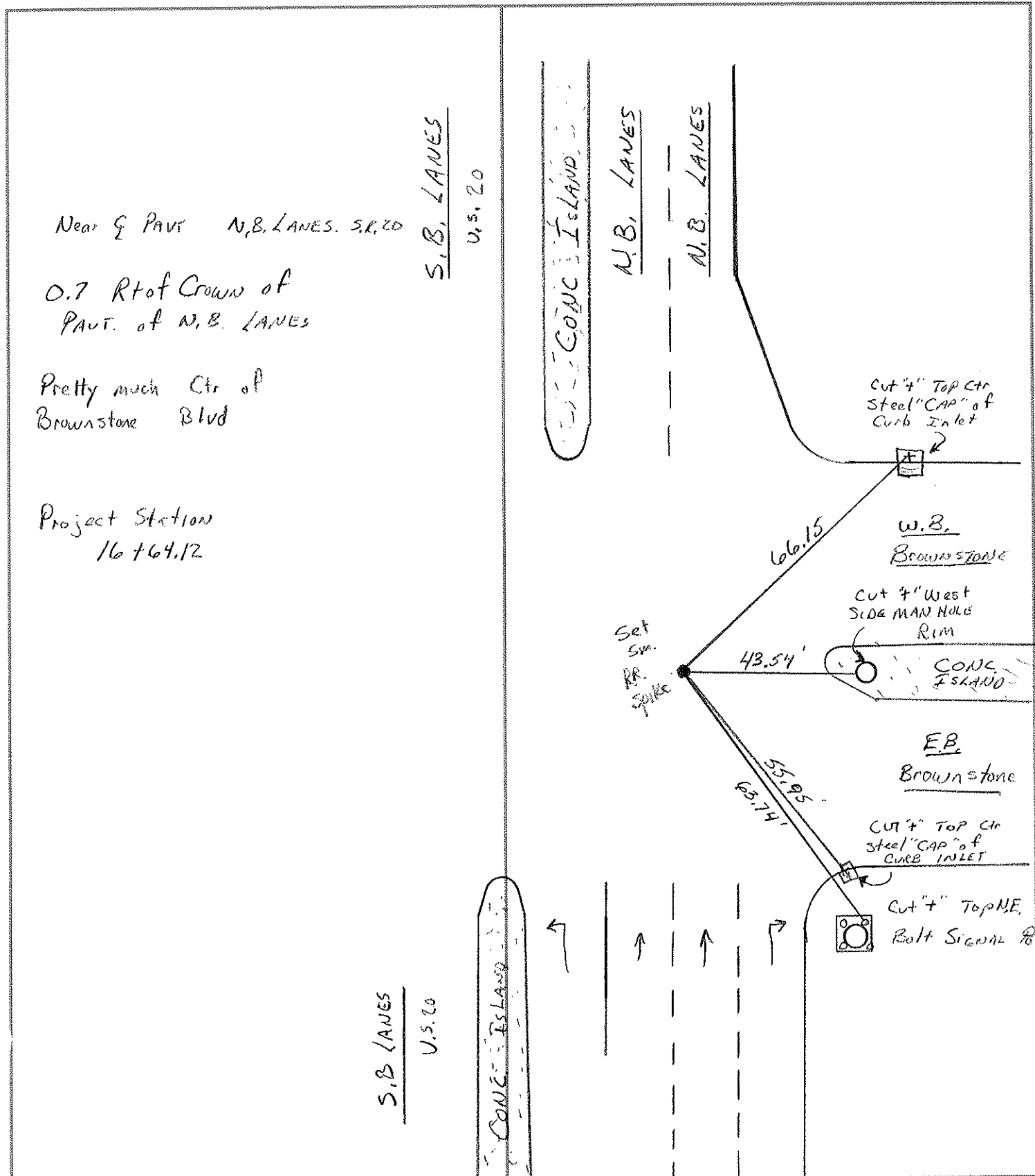
COUNTY LUCAS DATE AUGUST 12, 1971
 S. R. U.S. 20 WEATHER SUNNY
 SEC. _____ TEMP. 75° ±

DESCRIPTION REFERENCES TO CONTROL POINTS JOB NO. _____
 LEFT CENTER LINE RIGHT



PERSONNEL	TITLE	PERSONNEL	TITLE	COUNTY	DATE
LOEHRKE				LUCAS	9-11-97
Huss				S.R. U.S. 20	WEATHER BLAH!
				SEC. 14.94	TEMP. +64

DESCRIPTION Reset Control Pt @ BROWNSTONE STREET JOB NO. _____
 LEFT CENTER LINE RIGHT



0.7 Rtof Crown of
PAVT. of N.B. LANES

Pretty much Ctr of
Brownstone Blvd

Project Station
16+64.12

S.B. LANES
U.S. 20

CONC ISLAND

N.B. LANES
U.S. 20