

O.D.O.T. DISTRICT 2 SURVEY OFFICE (USE ONLY)

PERSONNEL

REFERENCE NO. 79

SHEET 33 OF 55

NOTES CURTIS

DATE 8/12/71

ROUTE US 20

H.C. STEVENS

WEATHER SUNNY

COUNTY LUCAS

R.C. BRANNAN

TEMP. 75°

TOWNSHIP 12 MILE RESERVE

SECTION 24

DWG BY NIESE PID _____

T 2 US R E

TYPE MONUMENT MOBORA

ON SURFACE - ~~BELOW~~ ON

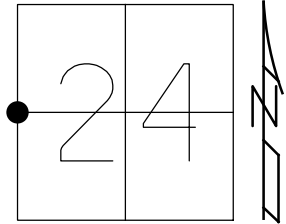
OFFSET \bar{C} PAVEMENT ON LT : RT

- TO - EDGE PAVEMENT

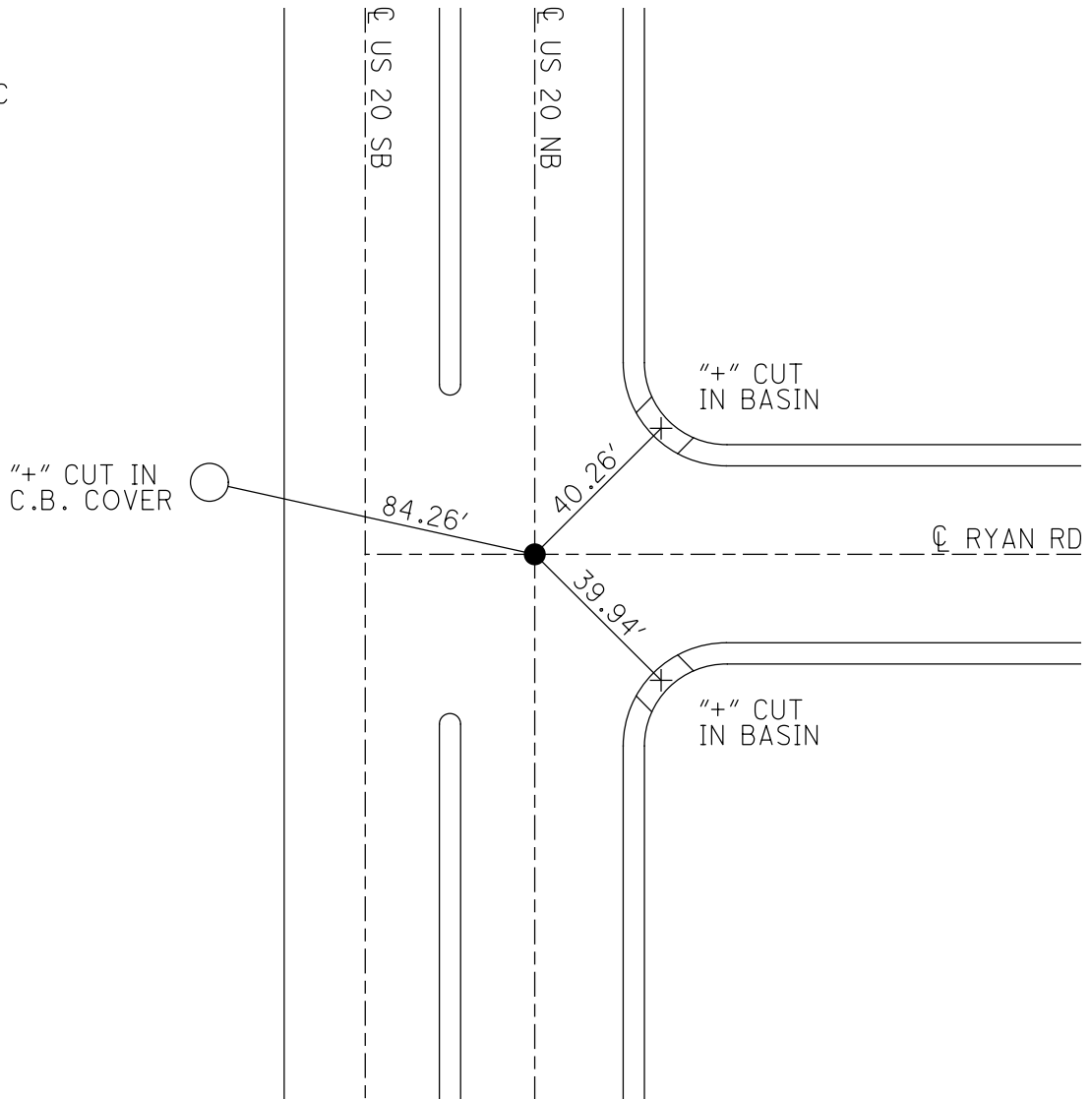
STATION: 842+69

HORIZ.DATUM: _____ GEOID: _____

GRID: NORTHING: _____ EASTING: _____



RECORD:
MOBORA
8/12/71, DC



PERSONNEL TITLE PERSONNEL TITLE

D. CURTIS _____

COUNTY LUCAS

DATE AUGUST 12, 1971

D. STEVENS _____

S. R. U.S. 20

WEATHER SUNNY

R. BRANNAN _____

SEC. _____

TEMP. 75°±

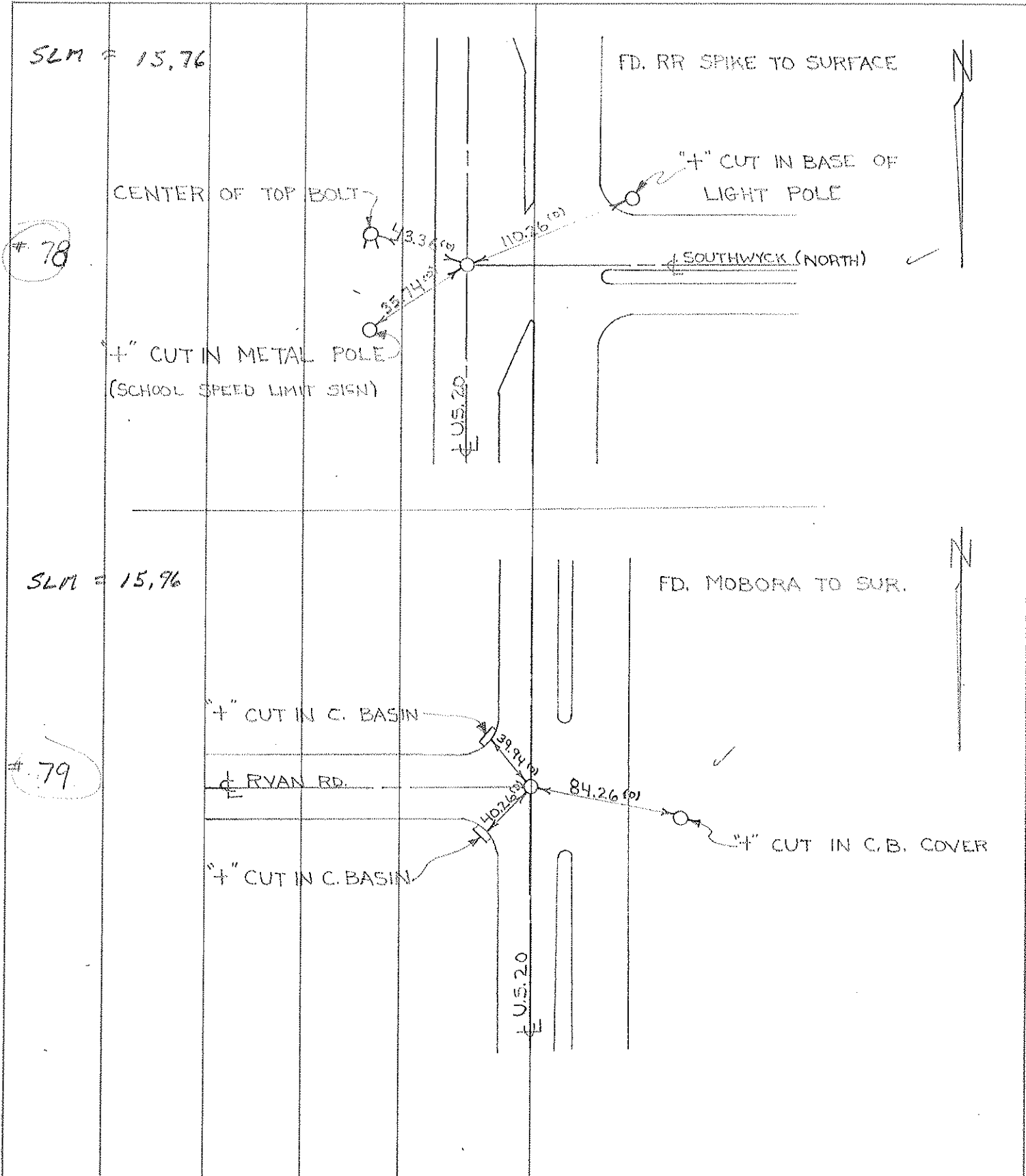
DESCRIPTION

LEFT

CENTER LINE

RIGHT

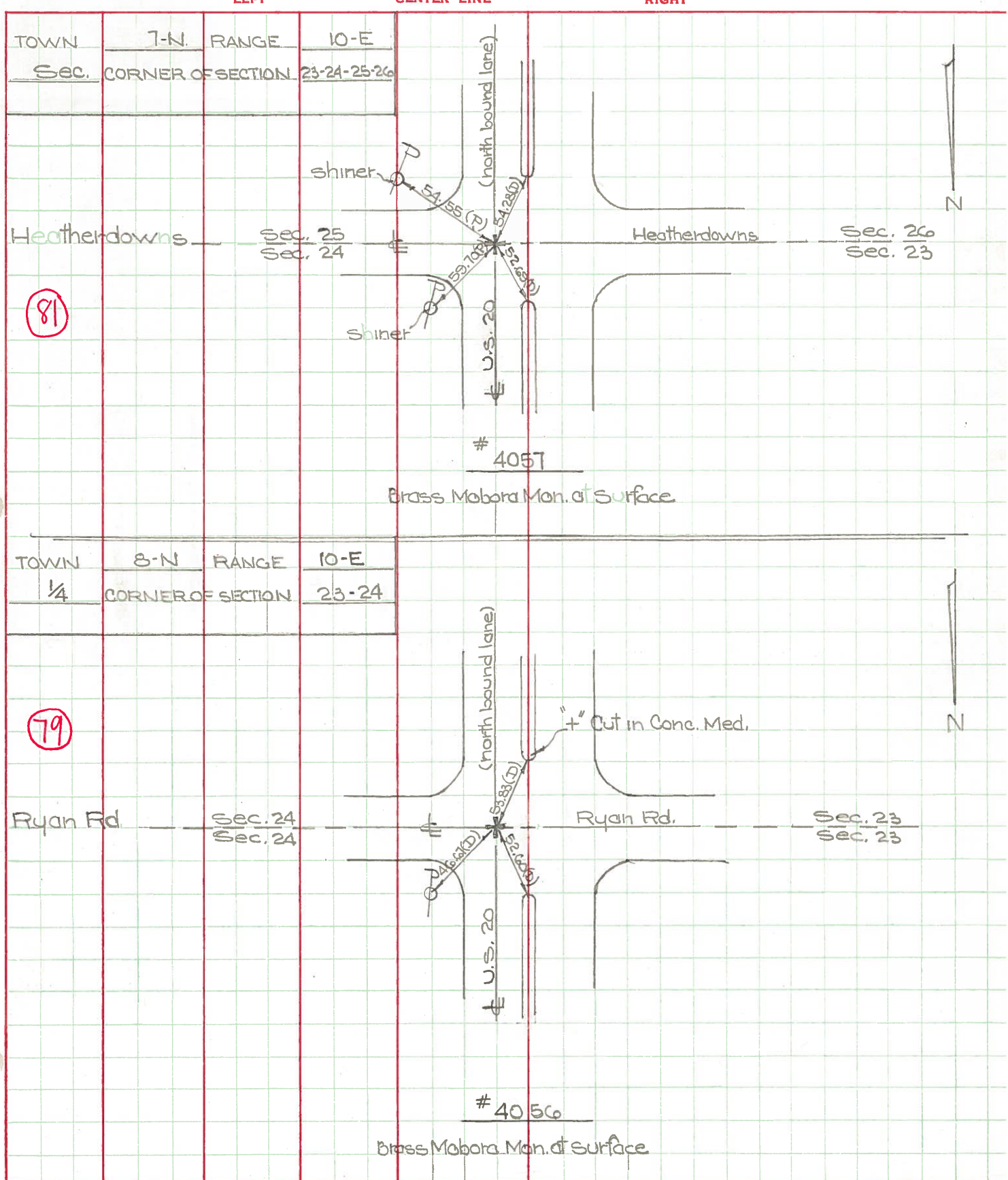
JOB NO. _____



PERSONNEL TITLE PERSONNEL TITLE
 D. Curtis _____
 J. Teal _____
 J. Brindley _____

COUNTY Lucas DATE May 24, 1968
 S. R. 20 WEATHER mild
 SEC. _____ TEMP. 55°±

DESCRIPTION U.S. 20 (Reynolds Rd) - Ref. Mon. & Control Points JOB NO. 02994 (c)



PERSONNEL TITLE PERSONNEL TITLE

COUNTY Lucas DATE 5 April 66

Shaw
Beck
Bridley
Schroder

S. R. #20 WEATHER Cool

SEC. Reynolds Rd. TEMP. 40°

DESCRIPTION Refs. To Central Pts. JOB NO.

LEFT CENTER LINE RIGHT

#467
E & W E Sec. 25 & 26
Fd. Hoborg Man.
E N.B. Lane - 20
1" Below Surface
41.59' ✓ E. To Shiner in P.P. (2)
63.26' ✓ S.E. To "f" in Corn High Pole Base
21.93' ✓ W. To Shiner in Wood Post (2)
92.24' ✓ W. To Shiner in Multiple Trce (2)

82

#468
Int. Heathredowns Rd.
E N.B. Lane - 20
Fd. Hoborg
To Surface
49.88' S.E. To Shiner in "f" (2)
54.28' ✓ S.W. To Chiseled "f" on Corn Me (2)
52.69' N.W. To Chiseled "f" on Co. (2)
~~56.07' S. To L. on Corn B.T. (2)~~
~~41.83' S.E. To Chiseled "f" on Corn Co (2)~~

out
out

81

#469
Int. Ryan Rd.
E N.B. Lane - 20
Fd. Hoborg
To Surface
46.71' ✓ N.E. To Shiner in P.P. (2)
52.60' ✓ N.W. To Chiseled "f" in Medi (2)
53.83' ✓ S.W. To Chiseled "f" in Medi (2)

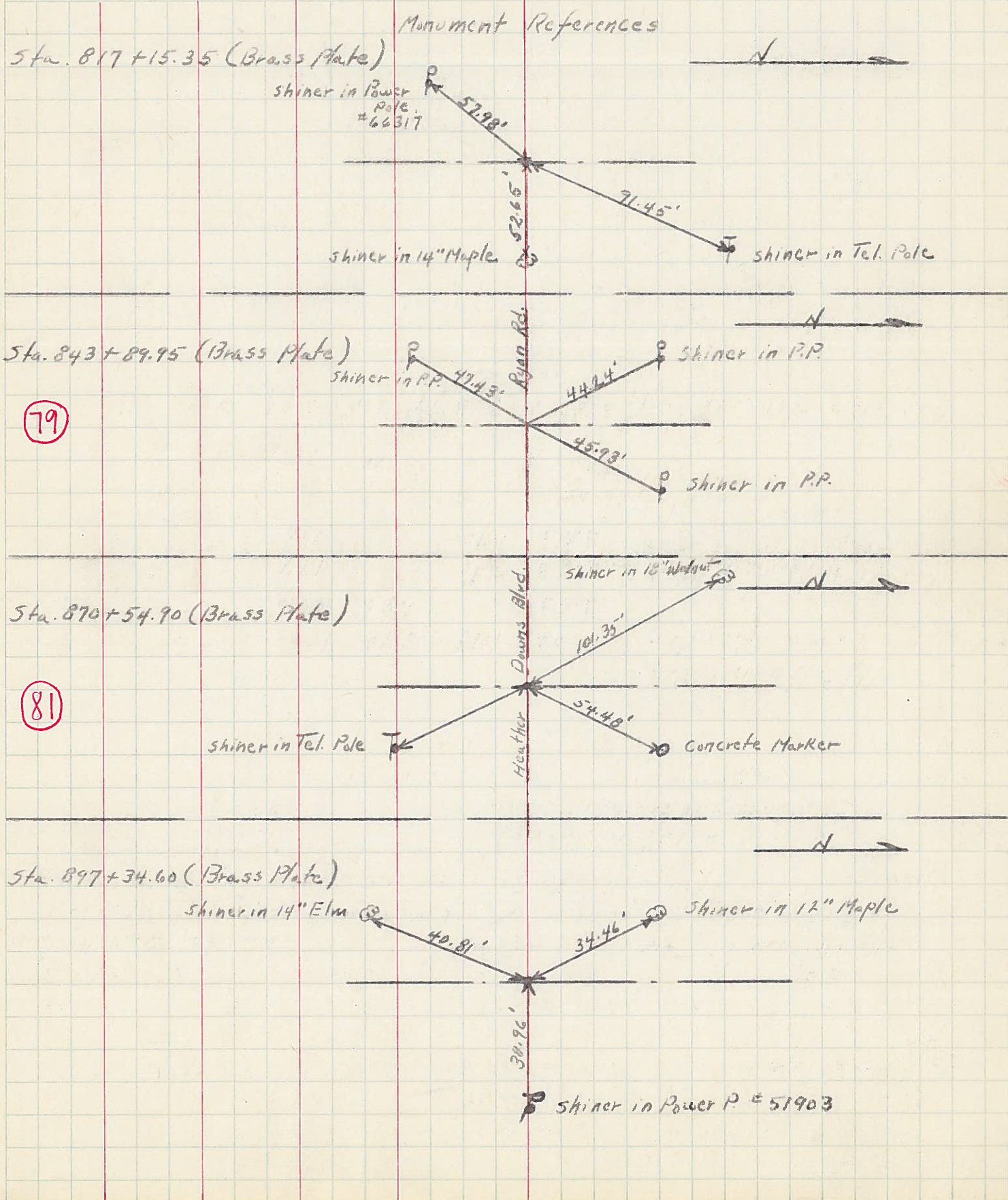
79

#470
N. Line Sec. 23-24
Fd. Hoborg
To Surface
N.B. Lane - 20
26.39' ✓ E.N.E. To Shiner in End Guard Post
21.32' ✓ W. To Shiner in Guard Post (2)
28.04' ✓ N.W. To Shiner in Guard Post (2)
36.45' ✓ S.W. To Shiner in Guard Post (2)

#471
Int. S.R. #2 E
US #20
Fd. Hoborg
1" Below Surface
60.43' ✓ N.E. To Shiner in L. Pole (2)
64.99' ✓ S.W. To Shiner in L. Pole (2)
42.36' ✓ N. To "f" on Corn Medi (2)
40.51' ✓ S. To "f" on Corn Medi (2)

75

PERSONNEL	TITLE	PERSONNEL	TITLE	COUNTY	DATE
Gruda				Lucas	
Fox				S. H. S. R. #20	WEATHER
Newser				SEC.	TEMP.
Vanyo					



79

81