

O.D.O.T. DISTRICT 2 SURVEY OFFICE (USE ONLY)

PERSONNEL

REFERENCE NO. 81

SHEET 35 OF 55

NOTES CURTIS

DATE 8/13/71

ROUTE US 20

H.C. STEVENS

WEATHER SUNNY

COUNTY LUCAS

R.C. BRANNAN

TEMP. 80°

TOWNSHIP 12 MILE RESERVE

DWG BY NIESE PID 110500

SECTION 24

T 2 US R E

TYPE MONUMENT MOBORA

ON SURFACE - ~~BELOW~~ ON

OFFSET ☉ PAVEMENT ON LT : RT

- TO - EDGE PAVEMENT

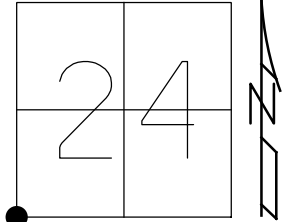
STATION: 869+62

HORZ. DATUM: NAD83 2011

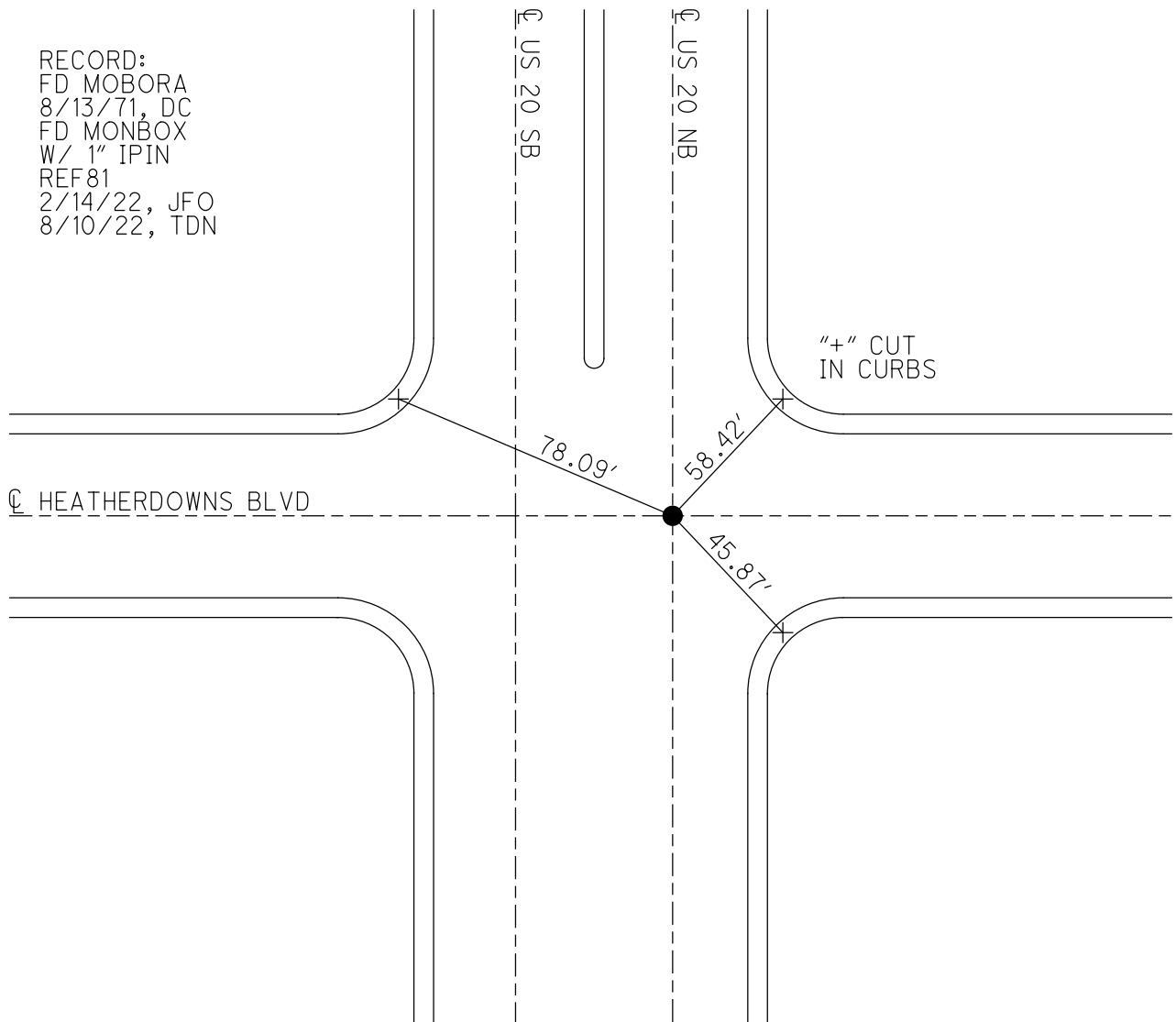
GEOID: NAVD88 2012A

GRID: NORTHING: 704545.488

EASTING: 1649939.376



RECORD:  
FD MOBORA  
8/13/71, DC  
FD MONBOX  
W/ 1" IPIN  
REF 81  
2/14/22, JFO  
8/10/22, TDN



O.D.O.T. DISTRICT 2 SURVEY OFFICE (USE ONLY)

PERSONNEL

REFERENCE NO. 81

SHEET 35 OF 55

NOTES CURTIS

DATE 8/13/71

ROUTE US 20

H.C. STEVENS

WEATHER SUNNY

COUNTY LUCAS

R.C. BRANNAN

TEMP. 80°

TOWNSHIP 12 MILE RESERVE

DWG BY NIESE PID \_\_\_\_\_

SECTION 24

T 2 US R E

TYPE MONUMENT MOBORA

ON SURFACE - ~~BELOW~~ ON

OFFSET ☉ PAVEMENT ON LT : RT

- TO - EDGE PAVEMENT

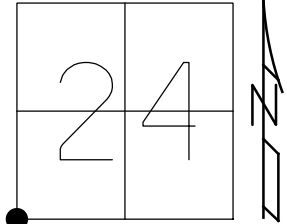
STATION: 869+62

HORZ.DATUM: \_\_\_\_\_

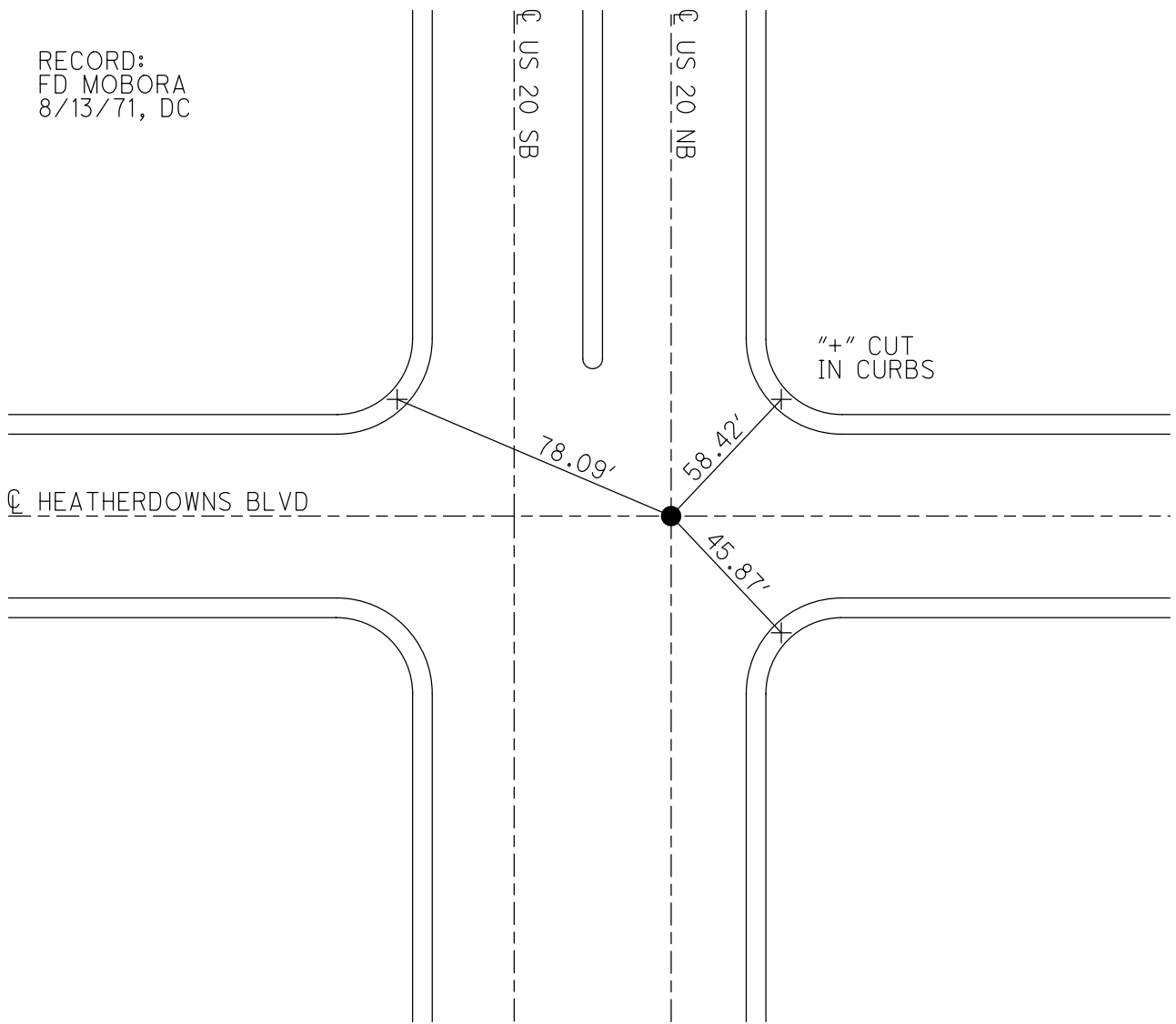
GEOID: \_\_\_\_\_

GRID: NORTHING: \_\_\_\_\_

EASTING: \_\_\_\_\_



RECORD:  
FD MOBORA  
8/13/71, DC



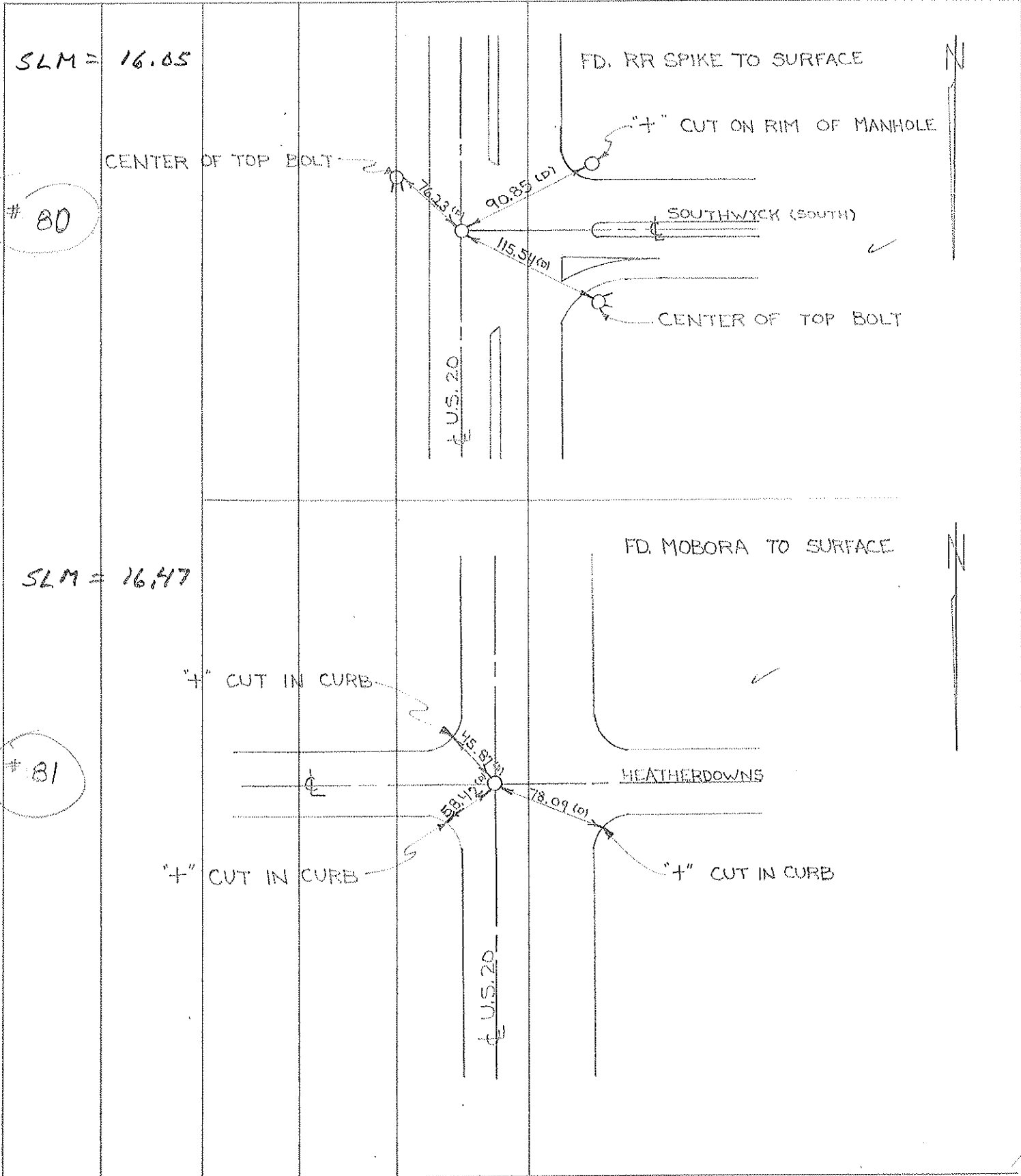
PERSONNEL TITLE PERSONNEL TITLE  
 D. CURTIS \_\_\_\_\_  
 D. STEVENS \_\_\_\_\_  
 R. BRANNAN \_\_\_\_\_

COUNTY LUCAS DATE August 13, 1971

S. R. U.S. 20 WEATHER SUNNY

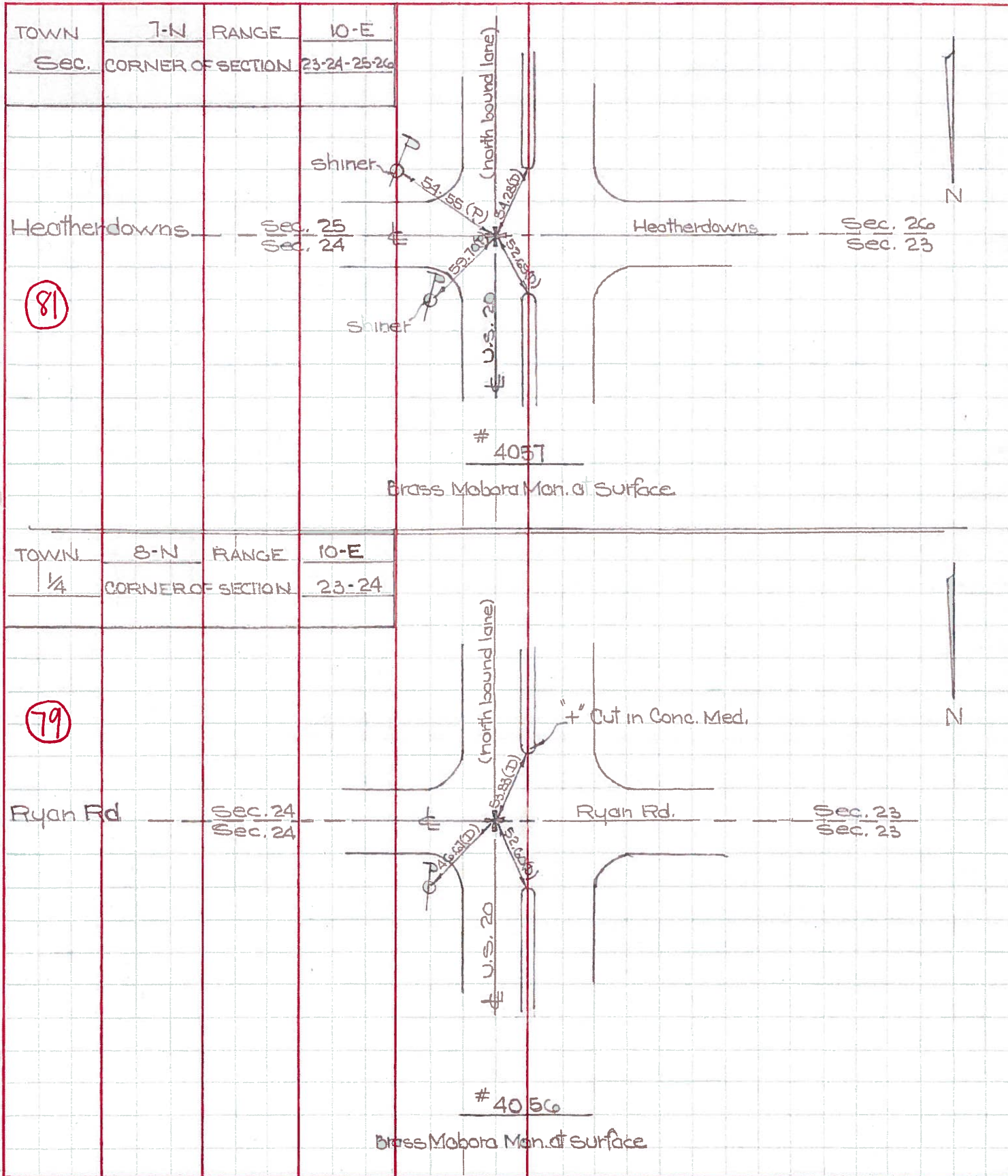
SEC. \_\_\_\_\_ TEMP. 80°±

DESCRIPTION REFERENCES TO CONTROL POINTS LEFT CENTER LINE RIGHT JOB NO.



PERSONNEL	TITLE	PERSONNEL	TITLE	COUNTY	Lucas	DATE	May 24, 1968
D. Curtis				S. R.	20	WEATHER	mild
J. Teal				SEC.		TEMP.	55°±
J. Brindley							

DESCRIPTION U.S. 20 (Reynolds Rd) - Ref. Mon. & Control Points JOB NO. 02994(0)



PERSONNEL TITLE PERSONNEL TITLE

COUNTY Lucas DATE 5 April 66

Spive  
Berk  
Brindley  
Schroder

S. R. #20 WEATHER Cool

SEC Reynolds Rd. TEMP. 40°

DESCRIPTION Rte. To Central Pts. JOB NO.

LEFT CENTER LINE RIGHT

#467  
E & W E Sec. 25 & 26  
F.d. Hoborg Mem.  
E N.B. Lane - 20  
1" Below Surface  
41.59' ✓ E. To Shiner in P.P. (2)  
63.26' ✓ S.E. To "7" in Corn. High Pole Base  
21.93' ✓ W. To Shiner in Wood Post (2)  
72.24' ✓ W. To Shiner in Multiple Tree (2)

82

#468  
Int. Heathardowns Rd.  
E N.B. Lane - 20  
F.d. Hoborg  
To Surface  
49.88' S.E. To Shiner in "1" (2)  
54.28' S.W. To Chiseled "7" on Corn. Med. (2)  
52.69' N.W. To Chiseled "7" on Corn. (2)  
56.07' E To L.V. Corn. B.T. (2)  
~~41.83' S.E. To Chiseled "7" in Corn. End~~

out  
out

81

#469  
Int. Ryan Rd.  
E N.B. Lane - 20  
F.d. Hoborg  
To Surface  
46.71' N.E. To Shiner in P.P. (2)  
52.60' N.W. To Chiseled "7" in Med. (2)  
53.83' S.W. To Chiseled "7" in Med. (2)

79

#470  
N. Line Sec. 23-24  
F.d. Hoborg  
To Surface  
N.B. Lane - 20  
26.39' E.W.E. To Shiner in End Guard Post  
21.32' W. To Shiner in End Post (2)  
28.04' N.W. To Shiner in Guard Post (2)  
36.45' S.W. To Shiner in Guard Post (2)

#471  
Int. S.R. #2 E  
US #20  
F.d. Hoborg  
1" Below Surface  
60.43' N.E. To Shiner in L. Pole (2)  
64.99' S.W. To Shiner in L. Pole (2)  
42.36' N. To "7" on Corn. Med. (2)  
40.51' S. To "7" on Corn. Med. (2)

75

PERSONNEL TITLE PERSONNEL TITLE

COUNTY \_\_\_\_\_

DATE \_\_\_\_\_

S. R. \_\_\_\_\_

WEATHER \_\_\_\_\_

SEC. \_\_\_\_\_

TEMP. \_\_\_\_\_

DESCRIPTION \_\_\_\_\_

LEFT

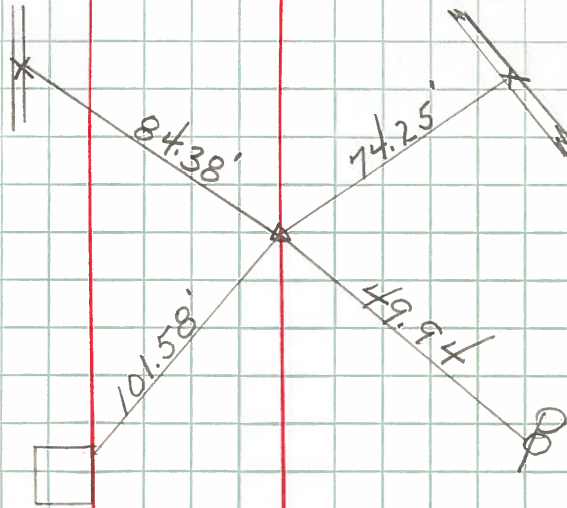
CENTER LINE

RIGHT

JOB NO. \_\_\_\_\_

Reynolds & Heatherdowns  
870+55.54  
E Survey  
N. Bound

81



Reynolds & Ryan Rd.  
843+89.95

PERSONNEL TITLE PERSONNEL TITLE

COUNTY Lucas

DATE

Grude  
Fox  
Newser  
Vandy

S. H. S. R. #20

WEATHER

SEC.

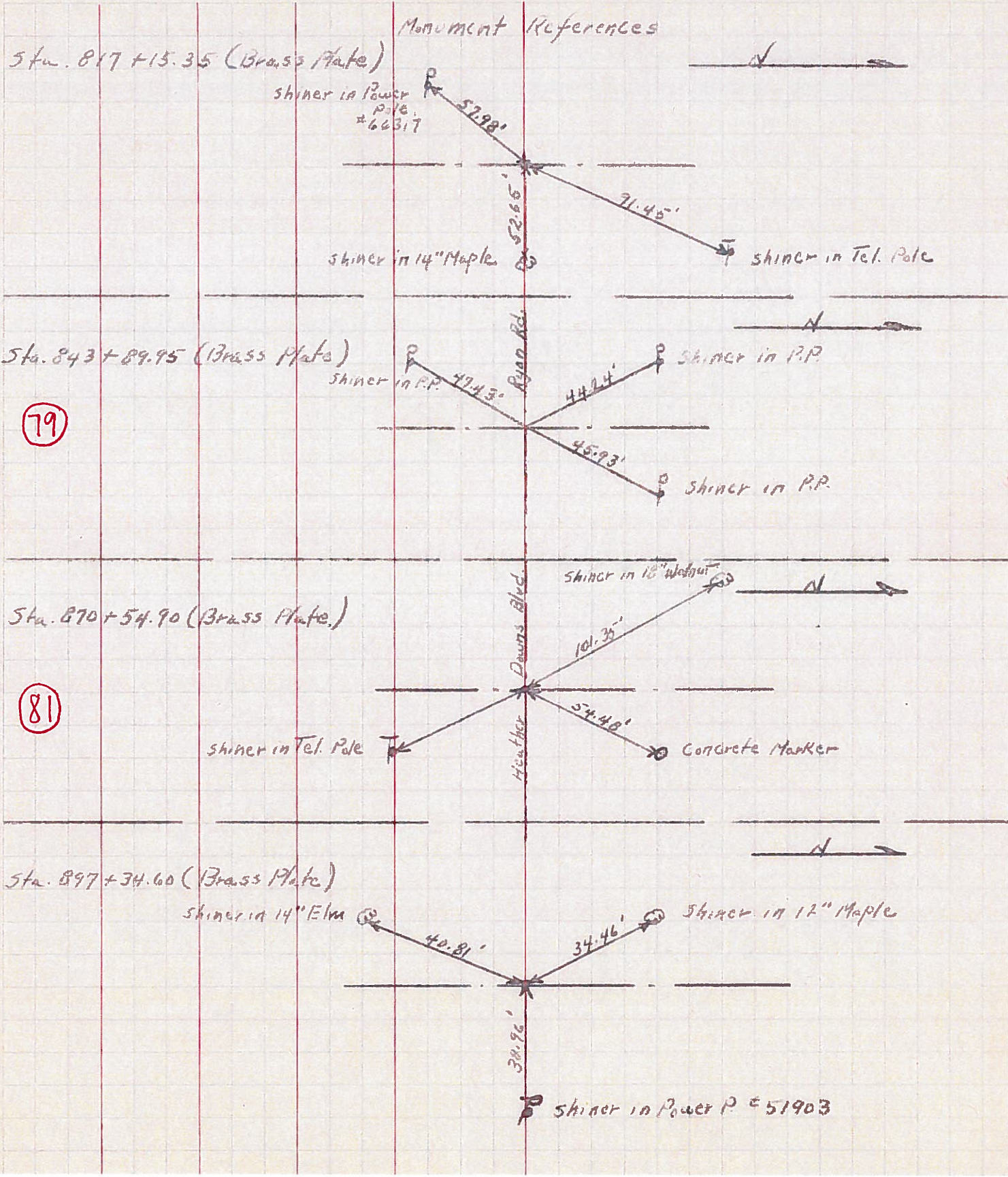
TEMP.

DESCRIPTION

LEFT

CENTER LINE

RIGHT



79

81