

O.D.O.T. DISTRICT 2 SURVEY OFFICE (USE ONLY)

PERSONNEL

REFERENCE NO. 82

SHEET 36 OF 55

NOTES CURTIS

DATE 8/13/71

ROUTE US 20

H.C. STEVENS

WEATHER SUNNY

COUNTY LUCAS

R.C. BRANNAN

TEMP. 75°

TOWNSHIP 12 MILE RESERVE

SECTION 25

DWG BY NIESE PID _____

T 2 US R E

TYPE MONUMENT BRASS MOBORA

~~ON SURFACE~~ - BELOW 1"

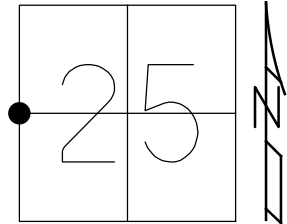
OFFSET ☉ PAVEMENT ON LT : RT

- TO - EDGE PAVEMENT

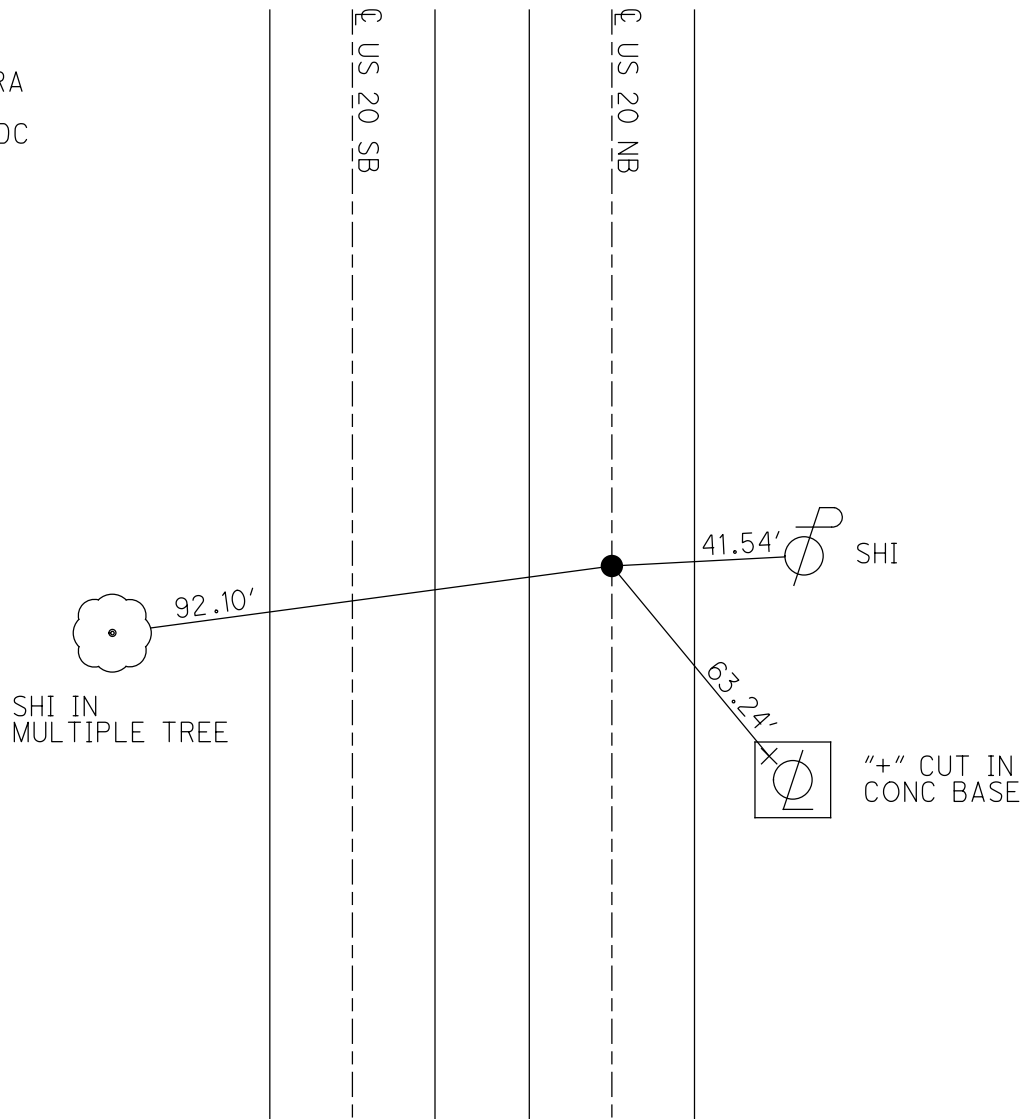
STATION: 896+02

HORIZ.DATUM: _____ GEOID: _____

GRID: NORTHING: _____ EASTING: _____

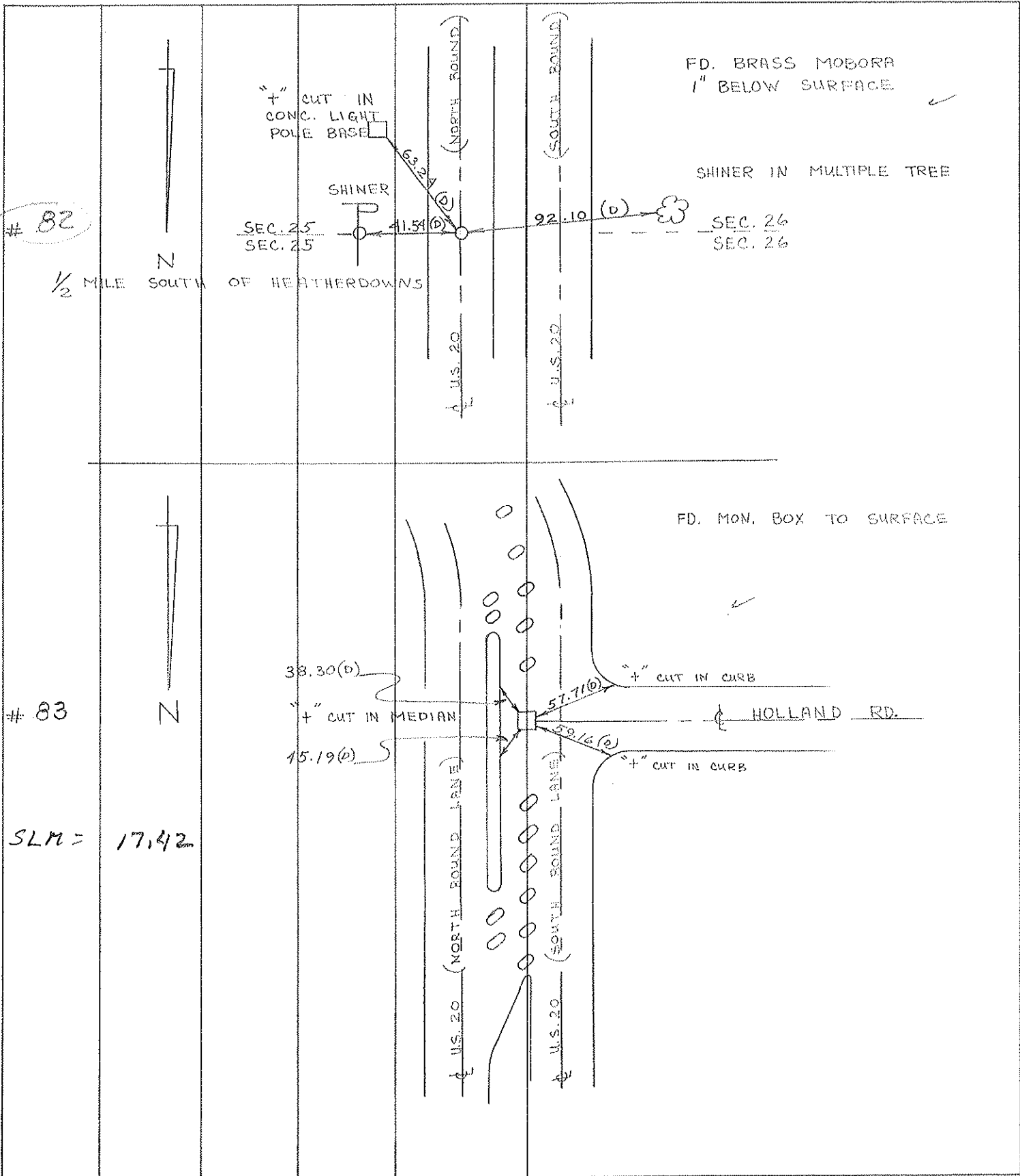


RECORD:
FD MOBORA
1" DOWN
8/13/71, DC



PERSONNEL	TITLE	PERSONNEL	TITLE	COUNTY	DATE	WEATHER	TEMP.
D. CURTIS				LUCAS	13 AUG 71	SUNNY	75 ±
D. STEVENS				U.S. 20			
R. BRANNAN							

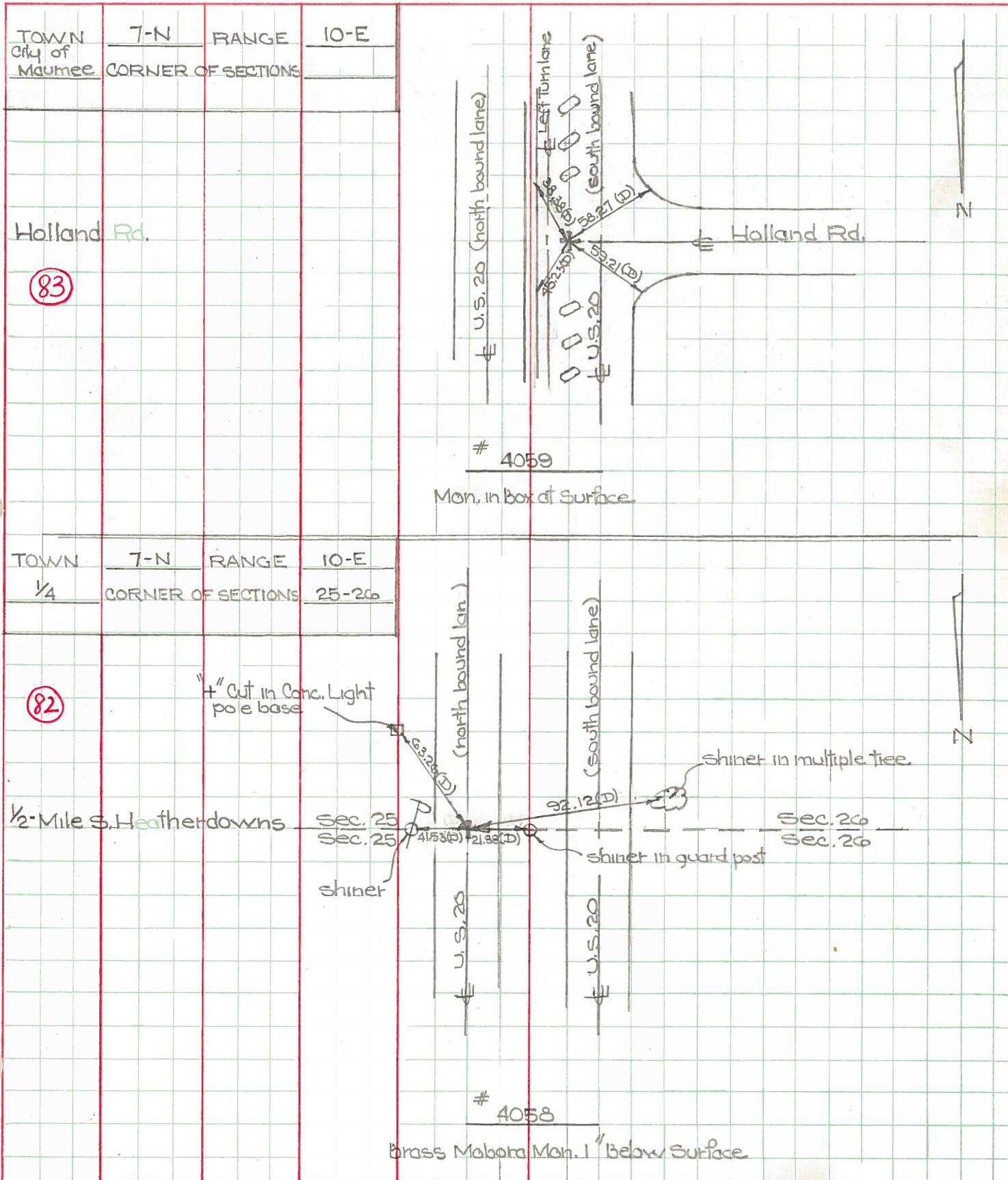
DESCRIPTION	REFERENCES TO CONTROL POINTS	JOB NO.
	LEFT CENTER LINE RIGHT	



PERSONNEL TITLE PERSONNEL TITLE
 D. Curtis _____
 J. Teal _____
 J. Brindley _____

COUNTY Lucas DATE May 24, 1968
 S. R. 20 WEATHER mild
 SEC. _____ TEMP. 60°±

DESCRIPTION U.S. 20 (Reynolds Rd) - Ref. Mon. & Control Points JOB NO. 02994 (0)



PERSONNEL TITLE PERSONNEL TITLE

COUNTY Lucas DATE 5 April 66

Spore

Beck

Brindley

Schroder

S. R. #20

WEATHER Cool

SEC. Reynolds Rd.

TEMP. 40°

DESCRIPTION

Refs. To Control Pts.

JOB NO.

LEFT

CENTER LINE

RIGHT

#467
 ESW E Sec. 25 & 26
 Fd. Hoborg Mon.
 E N.B. Lane - 20
 1" Below Surface

82

41.59' ✓ E. To Shiner in P.P. (D)
 63.26' ✓ S.E. To "f" in Con. Light Pole Base
 21.93' ✓ W. To Shiner in Wood Post (D)
 72.24' ✓ W. To Shiner in Multiple Tree (D)

#468
 Int. Heathcote Rd.
 E N.B. Lane - 20
 Fd. Hoborg
 To Surface

81

out
 out

49.88' S.E. To Shiner in P.P. (D)
 54.28' S.W. To Chiseled "f" on Con. Med. (D)
 52.69' N.W. To Chiseled "f" in Con. Med. (D)
~~56.07' N.E. To L.V. Con. P.P. (D)~~
~~41.83' S.E. To Chiseled "f" in Con. Med. (D)~~

#469
 Int. Ryan Rd.
 E N.B. Lane - 20
 Fd. Hoborg
 To Surface

79

46.71' N.E. To Shiner in P.P. (D)
 52.60' N.W. To Chiseled "f" in Med. (D)
 53.83' S.W. To Chiseled "f" in Med. (D)

#470
 N. Line Sec. 23-24
 Fd. Hoborg
 To Surface
 N.B. Lane - 20

26.39' E.N.E. To Shiner in End Guard Post
 21.3' W. To Shiner in Guard Post (D)
 28.04' N.W. To Shiner in Guard Post (D)
 36.45' S.W. To Shiner in Guard Post (D)

#471
 Int. SR #2 E
 US #20
 Fd. Hoborg
 1" Below Surface

75

60.43' N.E. To Shiner in L. Pole
 64.99' S.W. To Shiner in L. Pole (D)
 42.36' N. To "f" on Con. Med. (D)
 40.51' S. To "f" on Con. Med. (D)