

O.D.O.T. DISTRICT 2 SURVEY OFFICE (USE ONLY)

PERSONNEL

REFERENCE NO. 84

SHEET 38 OF 55

NOTES HUSS

DATE 7/24/97

ROUTE US 20

H.C. LOEHRKE

WEATHER CLOUDY/HUMID

COUNTY LUCAS

R.C. HUSS

TEMP. 74°

TOWNSHIP 12 MILE RESERVE

COX

SECTION 36

DWG BY NIESE PID \_\_\_\_\_

T 2 US R E

TYPE MONUMENT MONBOX

ON SURFACE - ~~BELOW~~ ON

OFFSET ☉ PAVEMENT ON LT : RT

27.10' TO LT ~~EDGE PAVEMENT~~ FACE OF CURB

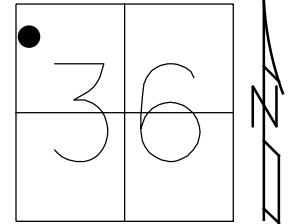
STATION: 926+79

HORZ. DATUM: \_\_\_\_\_

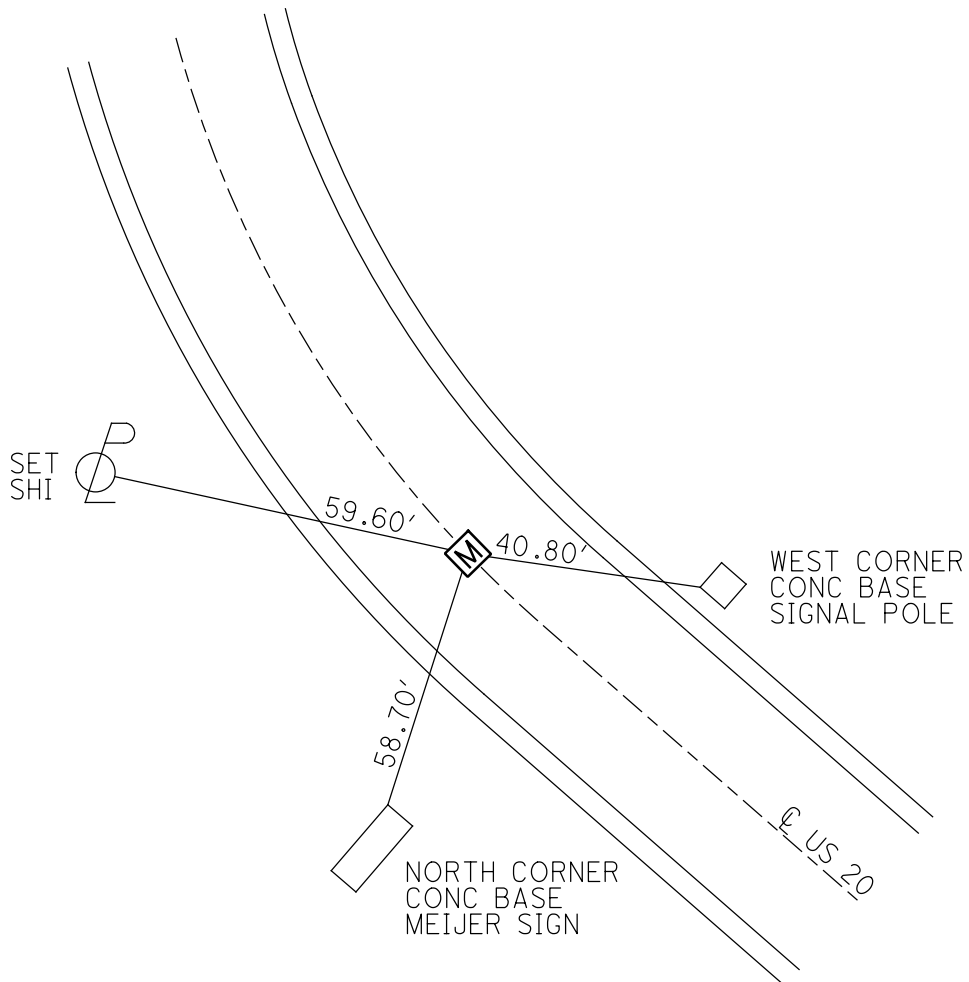
GEOID: \_\_\_\_\_

GRID: NORTHING: \_\_\_\_\_

EASTING: \_\_\_\_\_



RECORD:  
S.L.M. 28+248.8  
FD MONBOX  
7/24/97, CL



# O.D.O.T. DISTRICT 2 SURVEY OFFICE

PERSONNEL \_\_\_\_\_

REFERENCE NO. 84

SHEET 1 OF \_\_\_\_\_

NOTES Huss

H.C. Lochake

R.C. Huss

P Cox

DATE 7-24-97

WEATHER Cldy - humid

TEMP. + 74 °F

ROUTE U.S. 20

COUNTY Lucas

TOWNSHIP City of Maumee

SECTION \_\_\_\_\_

T \_\_\_\_\_ R \_\_\_\_\_

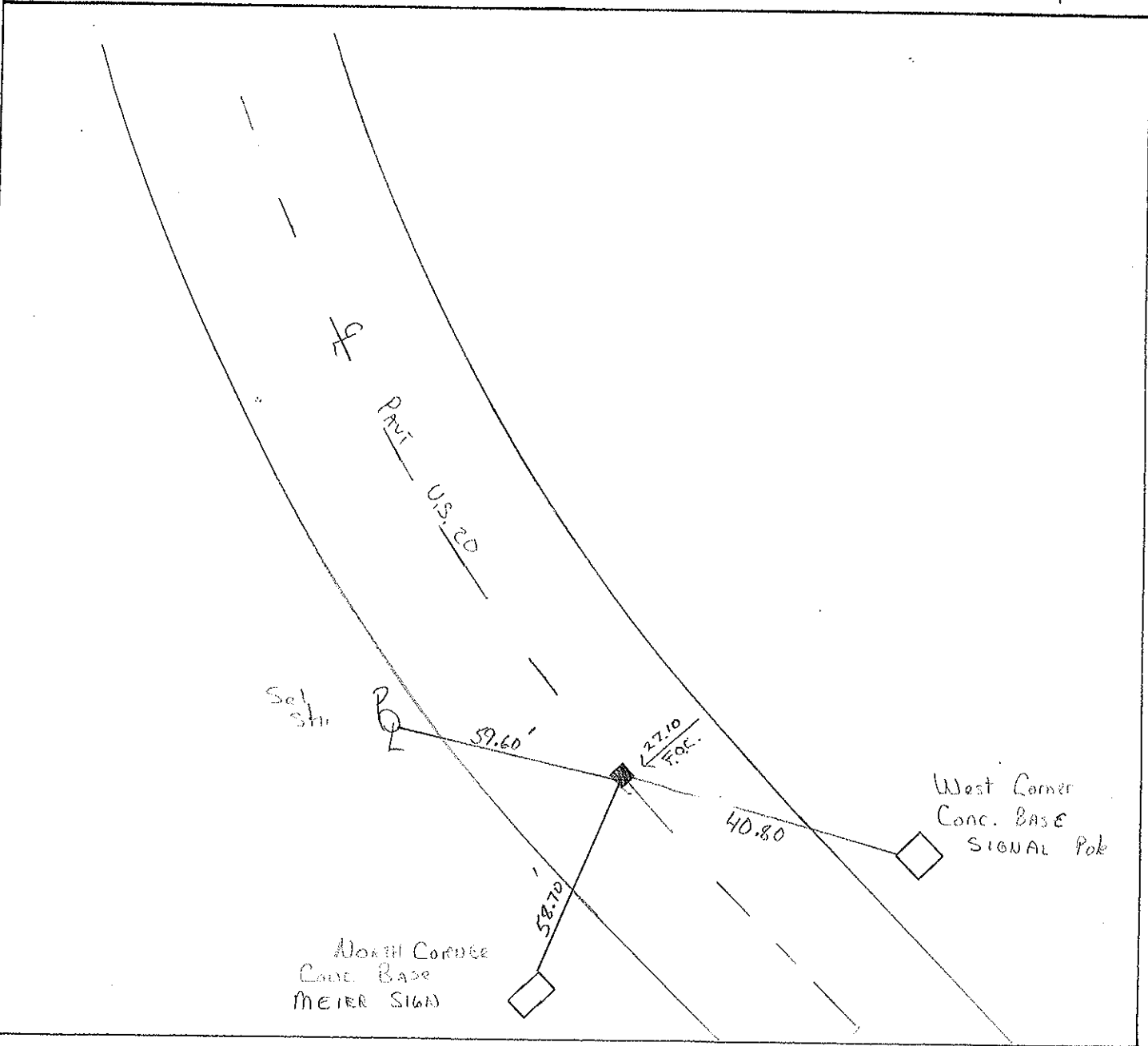
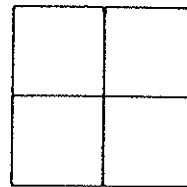
TYPE MONUMENT Mon Box

ON SURFACE - BELOW Yes

~~LEFT - & PAV'T.~~ - RIGHT Yes

27.10 TO Lt EDGE PAVEMENT Face of Curb.

S.L.M. 28+248.8





PERSONNEL TITLE PERSONNEL TITLE  
 D. Curtis \_\_\_\_\_  
 J. Teal \_\_\_\_\_  
 J. Brindley \_\_\_\_\_

COUNTY Lucas DATE May 28, 1968  
 S. R. 20 WEATHER mild  
 SEC. \_\_\_\_\_ TEMP. 55°±

DESCRIPTION U.S. 20 (Reynolds Rd) - Ref. Mon. & Control Points JOB NO. 02994(0)  
 LEFT CENTER LINE RIGHT

