

O.D.O.T. DISTRICT 2 SURVEY OFFICE (USE ONLY)

PERSONNEL _____

REFERENCE NO. 86

SHEET 40 OF 55

NOTES HUSS

DATE 7/24/97

ROUTE US 20

H.C. LOEHRKE

WEATHER CLOUDY/HUMID

COUNTY LUCAS

R.C. HUSS

TEMP. 74°

TOWNSHIP 12 MILE RESERVE

COX

SECTION 36

DWG BY NIESE

PID _____

T 2 US R E

TYPE MONUMENT MONBOX

ON SURFACE - ~~BELOW~~ ON

OFFSET CL PAVEMENT 22.2' LT : ~~RT~~

8.7' TO LT ~~EDGE PAVEMENT~~ FACE OF CURB

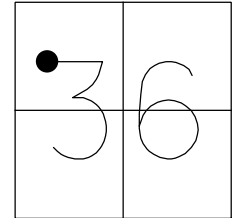
STATION: 934+50

HORIZ.DATUM: _____

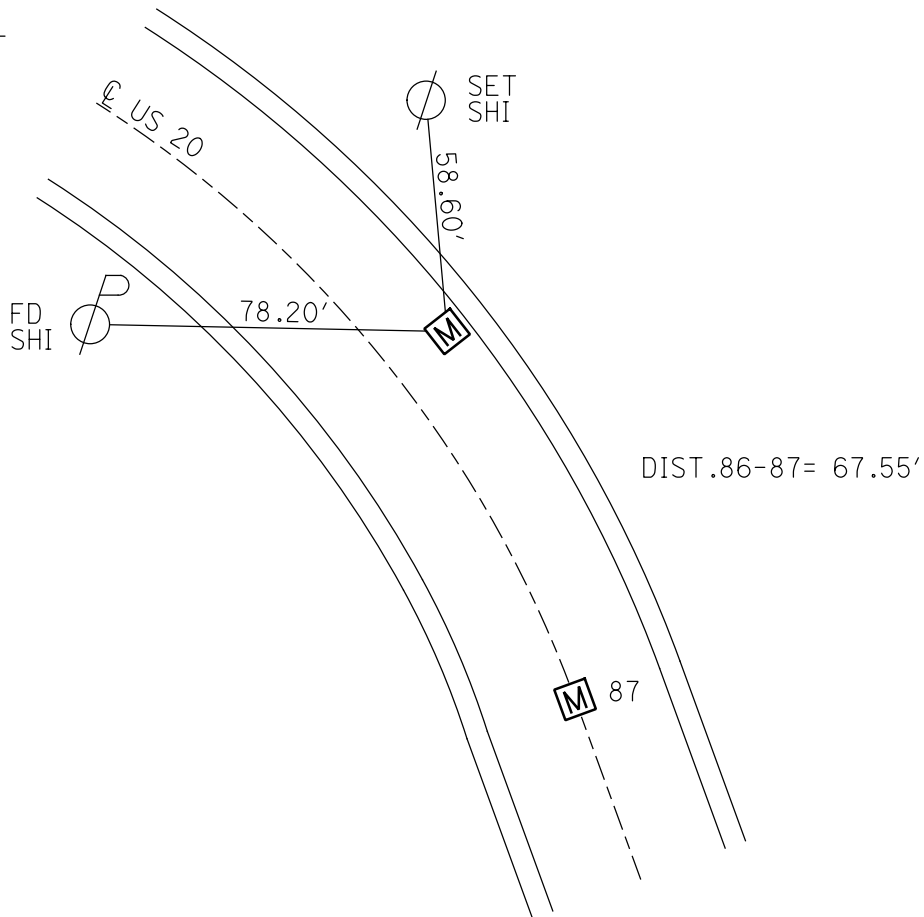
GEOID: _____

GRID: NORTHING: _____

EASTING: _____



RECORD:
S.L.M. 28+483.65
FD MONBOX
7/24/97, CL



O.D.O.T. DISTRICT 2 SURVEY OFFICE

PERSONNEL

REFERENCE NO. 86987 SHEET OF

NOTES Huss
 H.C. Lochryke
 R.C. Huss
 F Loz

DATE 7-24-97
 WEATHER Cldy-humid
 TEMP. +74° F

ROUTE US-20
 COUNTY Lucas
 TOWNSHIP City Maumee
 SECTION
 T R

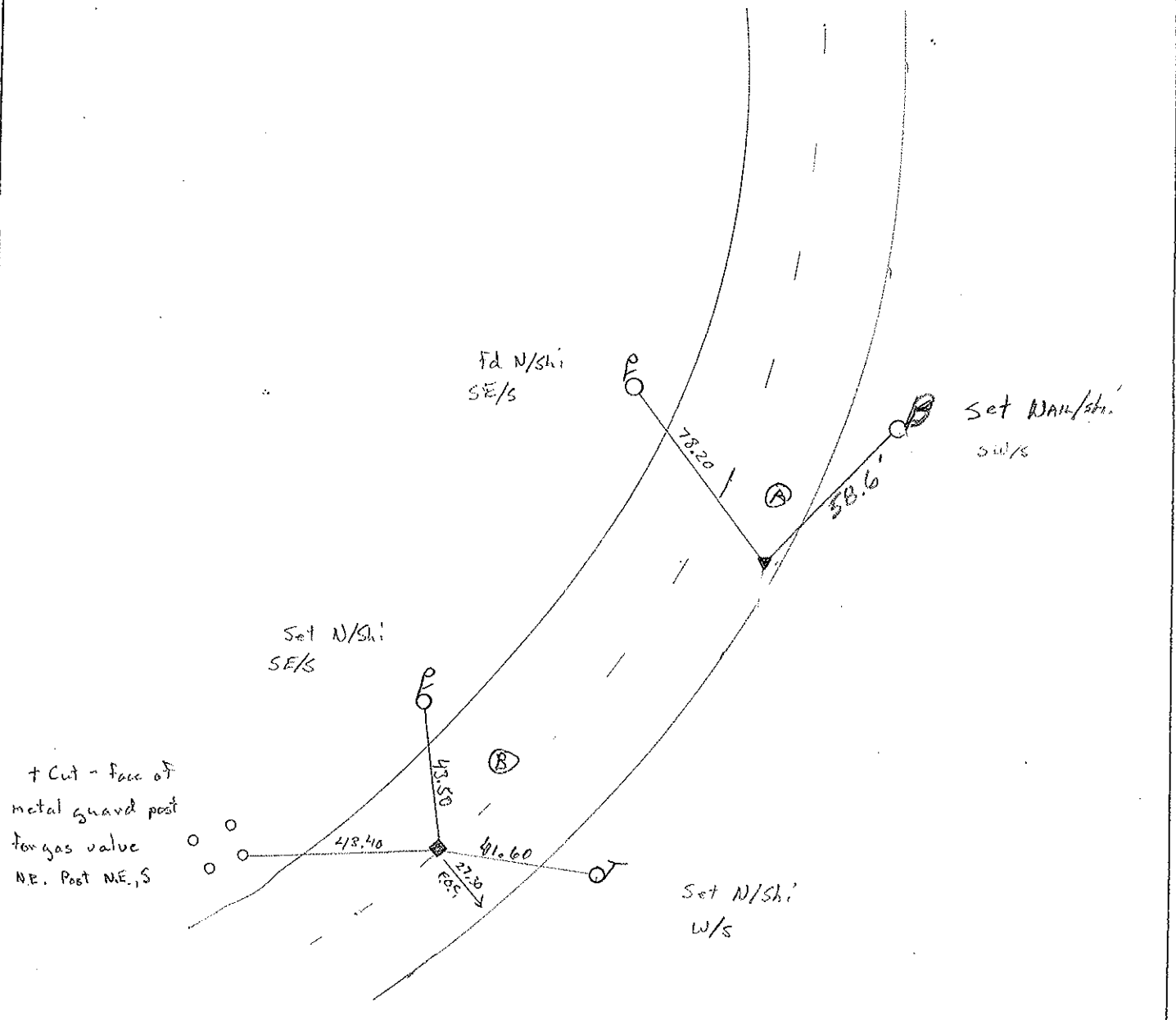
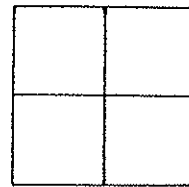
TYPE MONUMENT Mon Box

ON SURFACE - ~~BELOW~~ Yes

LEFT - ℄ PAV'T. - RIGHT ℄ on ℄ / ℄ 22.2' Lt ℄

℄ 27.36 TO Lt EDGE PAVEMENT ℄ 8.7' to Lt F.O.C.

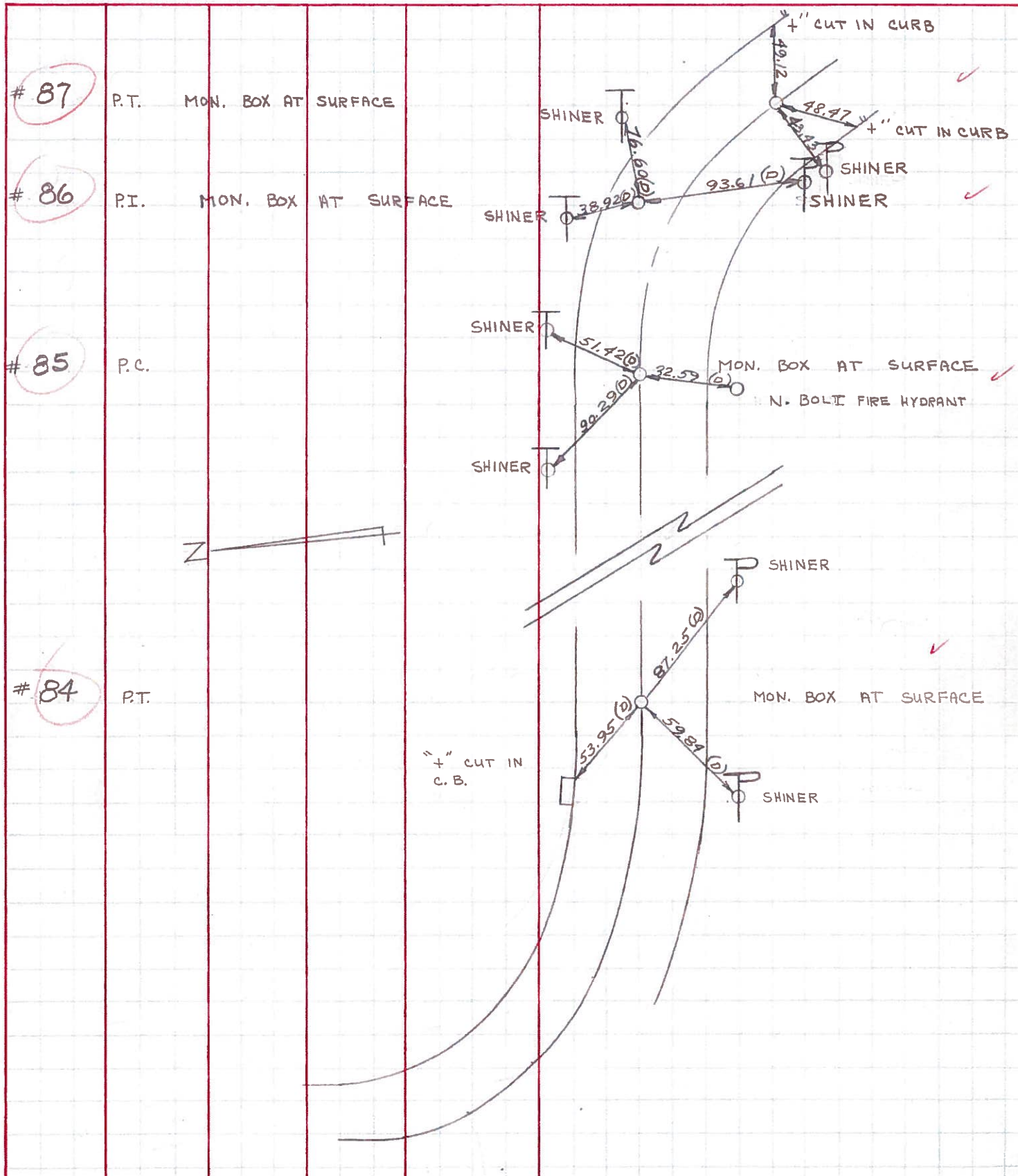
S.L.M. ℄ 28+483.65 ; ℄ 28+551.20



PERSONNEL	TITLE	PERSONNEL	TITLE	COUNTY	DATE	WEATHER	TEMP.
D. CURTIS				LUCAS	13 AUG 71	SUNNY	75±
D. STEVENS				U.S. 20			
R. BRANNAN							

DESCRIPTION REFERENCES TO CONTROL POINTS JOB NO.

LEFT CENTER LINE RIGHT



PERSONNEL TITLE PERSONNEL TITLE

D. Curtis

COUNTY Lucas

DATE May 28, 1968

J. Teal

S. R. 20

WEATHER mild

J. Brindley

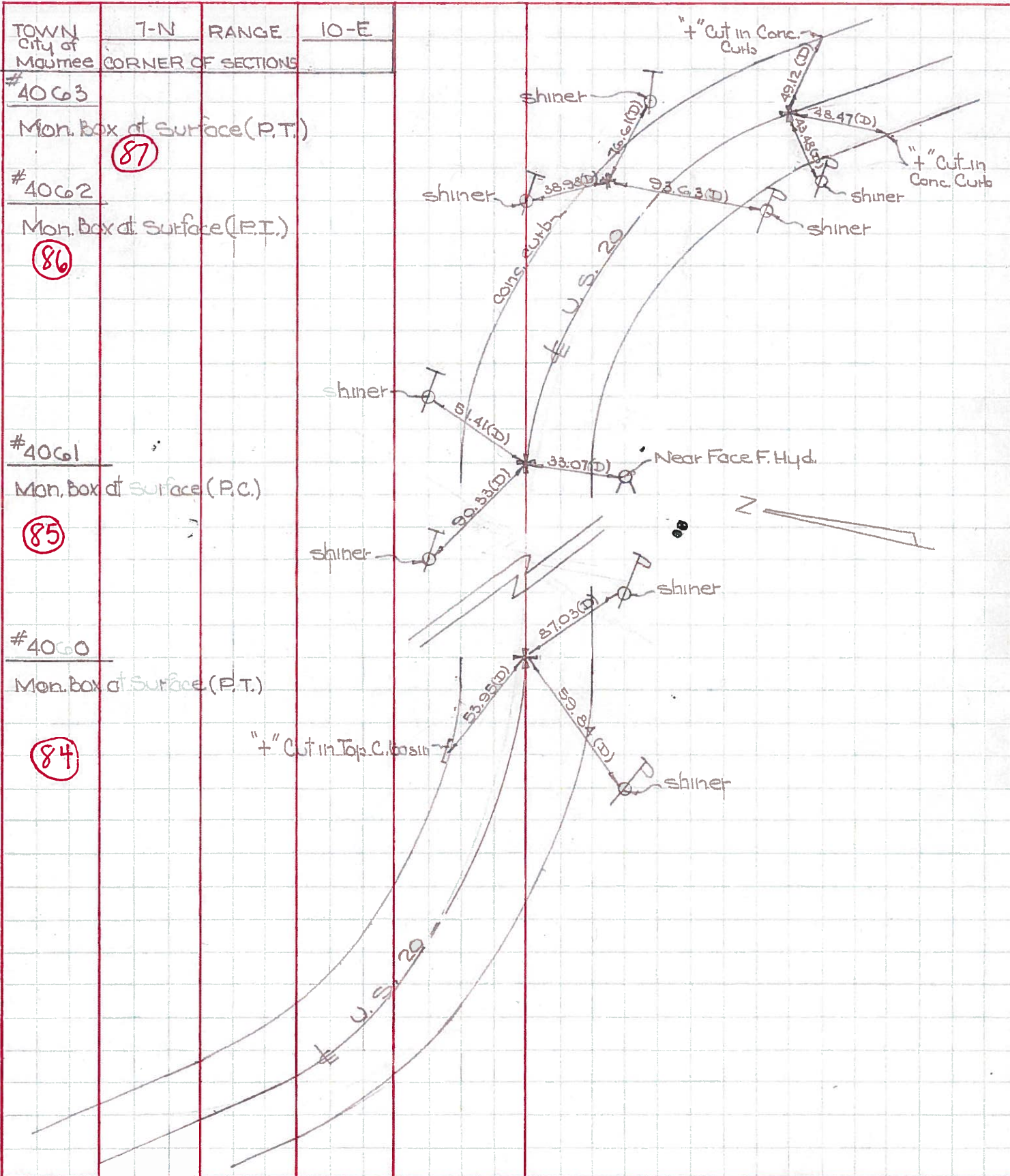
SEC.

TEMP.

55°±

DESCRIPTION U.S. 20 (Reynolds Rd) - Ref. Mon. & Control Points

JOB NO. 02994(0)



TOWN City of	7-N	RANGE	10-E
Maurice	CORNER OF SECTIONS		

#4063

Mon. Box at Surface (P.T.)

87

#4062

Mon. Box at Surface (P.T.)

86

#4061

Mon. Box at Surface (P.C.)

85

#4060

Mon. Box at Surface (P.T.)

84

PERSONNEL Stang **TITLE** _____ **PERSONNEL** _____ **TITLE** _____
COUNTY Lucas **DATE** 7 April 6
S. R. # 20 **WEATHER** Cool
SEC. _____ **TEMP.** 37°

DESCRIPTION Rate To Cap Pls **JOB NO.** _____
LEFT **CENTER LINE** **RIGHT**

✓	(87)	Fd. Mon. Box P.T. Curve	41.72' E.N.E. To Shiner in T.P. 43.48' W.N.W. To Shiner in P.P. 49.12' S.E. To Chiselled "I" on Curb 48.47' S.W. To Chiselled "I" on Curb
✓	(86)	Fd. Mon. Box P.I. Curve	38.98' N.E. To Shiner in P.P. 78.18' N.W. To Shiner in T.P. 76.61' S.E. To Shiner in P.P. 93.60' S.W. To Shiner in T.P.
✓	(85)	Fd. Mon. Box P.C. Curve	075' N.W. To Shiner in T.P. 90.33' N.E. To Shiner in P.P. 51.41' S.E. To Shiner in P.P. 33.07' S.W. To Near Face F. Hydrant
✓		Fd. Mon. Box P.T. Curve	59.84' N.W. To Shiner in P.P. 87.03' S.W. To Shiner in P.P. 53.95' N.E. To Chiselled "I" in Metal Curb off
✓		P.I. Curve In Field	
✓	(83)	# 466 Int. Holland Rd. Fd. Mon. Box To Surface	59.21' N.W. T 5.27' S.W. T 45.23' N.E. T 8.8' S.E. T