

O.D.O.T. DISTRICT 2 SURVEY OFFICE (USE ONLY)

PERSONNEL _____

REFERENCE NO. 87

SHEET 41 OF 55

NOTES HUSS

DATE 7/24/97

ROUTE US 20

H.C. LOEHRKE

WEATHER CLOUDY/HUMID

COUNTY LUCAS

R.C. HUSS

TEMP. 74°

TOWNSHIP 12 MILE RESERVE

COX

SECTION 36

DWG BY NIESE PID _____

T 2 US R E

TYPE MONUMENT MONBOX

ON SURFACE - ~~BELOW~~ ON

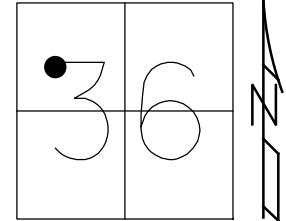
OFFSET 0 PAVEMENT ON LT : RT

27.36' TO LT ~~EDGE PAVEMENT~~ FACE OF CURB

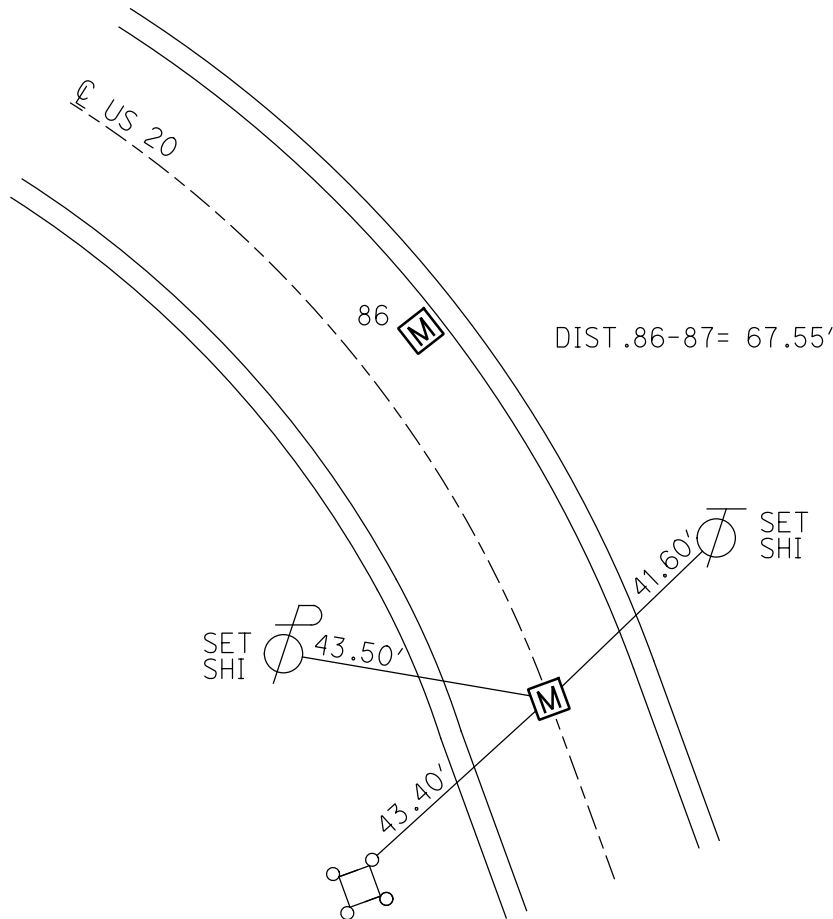
STATION: 936+72

HORIZ.DATUM: _____ GEOID: _____

GRID: NORTHING: _____ EASTING: _____



RECORD:
S.L.M. 28+551.20
FD MONBOX
7/24/97, CL



CUT "+" FACE
OF METAL GAURD
POST FOR GAS VALVE

O.D.O.T. DISTRICT 2 SURVEY OFFICE

PERSONNEL

REFERENCE NO. 86987 SHEET OF

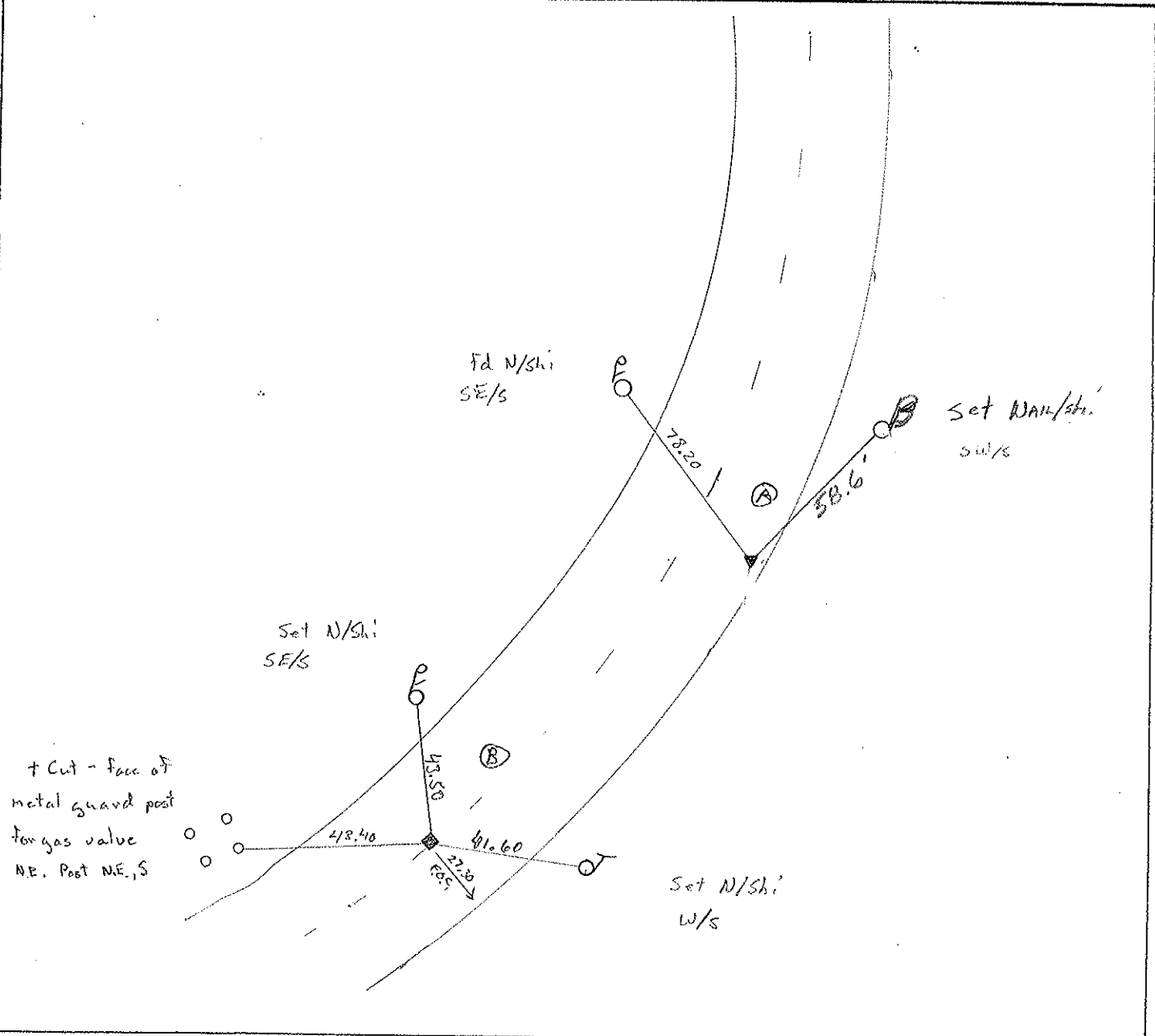
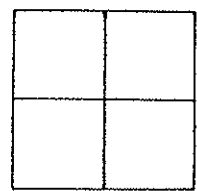
NOTES Huss
 H.C. Lochryke
 R.C. Huss
 F Loz

DATE 7-24-97
 WEATHER Cldy-humid
 TEMP. +74° F

ROUTE US-20
 COUNTY Lucas
 TOWNSHIP City Maumee
 SECTION
 T R

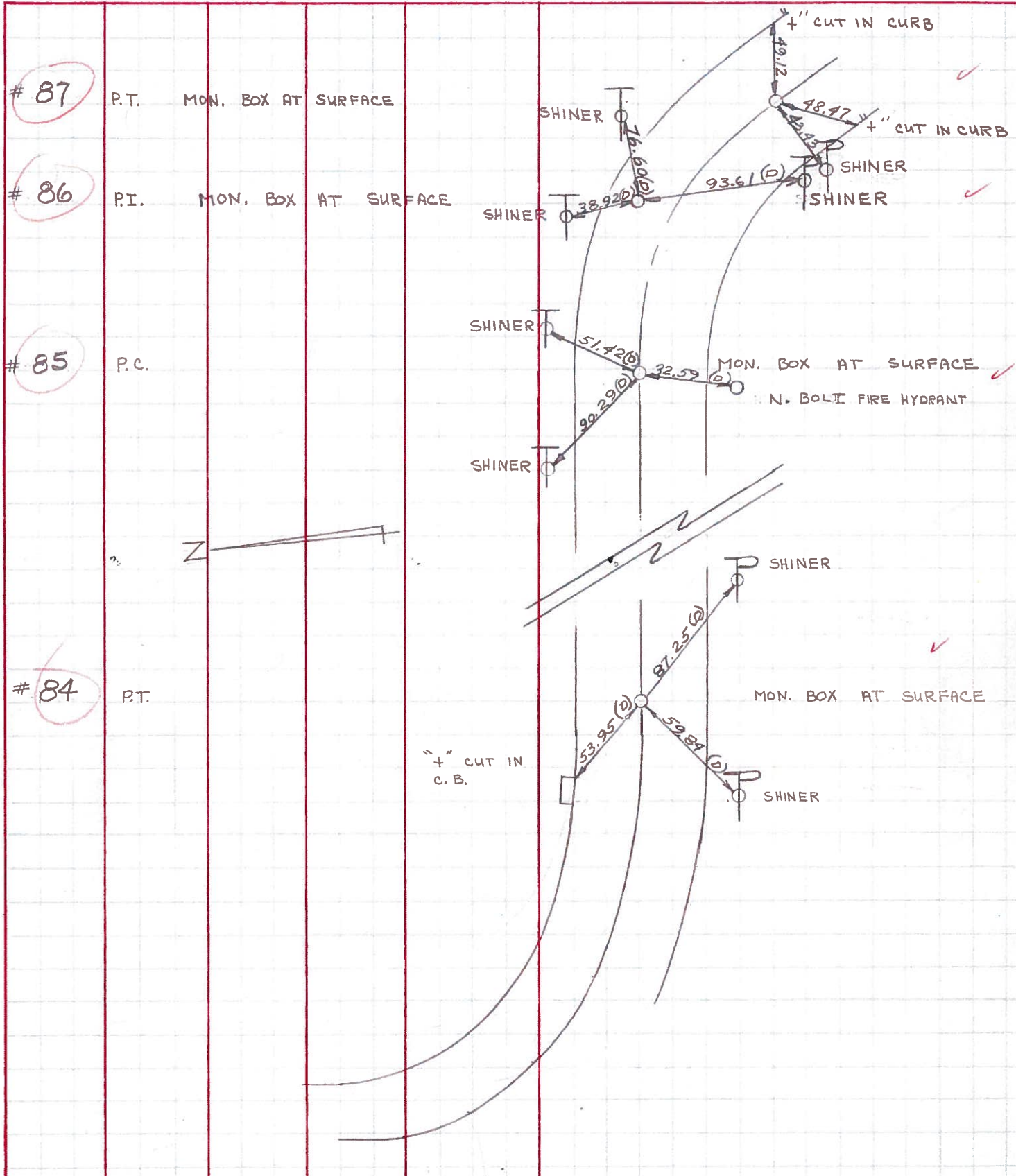
TYPE MONUMENT Mon Box
 ON SURFACE - ~~BELOW~~ Yes

LEFT - ℄ PAV'T. - RIGHT ℄ on ℄ / ℄ 22.2' Lt ℄
℄ 27.36 TO Lt EDGE PAVEMENT ℄ 8.7' to Lt F.O.C.
 S.L.M. ℄ 28+483.65 ℄ 28+551.20



PERSONNEL	TITLE	PERSONNEL	TITLE	COUNTY LUCAS	DATE 13 AUG 71
D. CURTIS				S. R. U.S. 20	WEATHER SUNNY
D. STEVENS				SEC.	TEMP. 75±
R. BRANNAN					

DESCRIPTION	REFERENCES TO CONTROL POINTS	JOB NO.
	LEFT CENTER LINE RIGHT	



PERSONNEL TITLE PERSONNEL TITLE

D. Curtis

COUNTY Lucas

DATE May 28, 1968

J. Teal

S. R. 20

WEATHER mild

J. Brindley

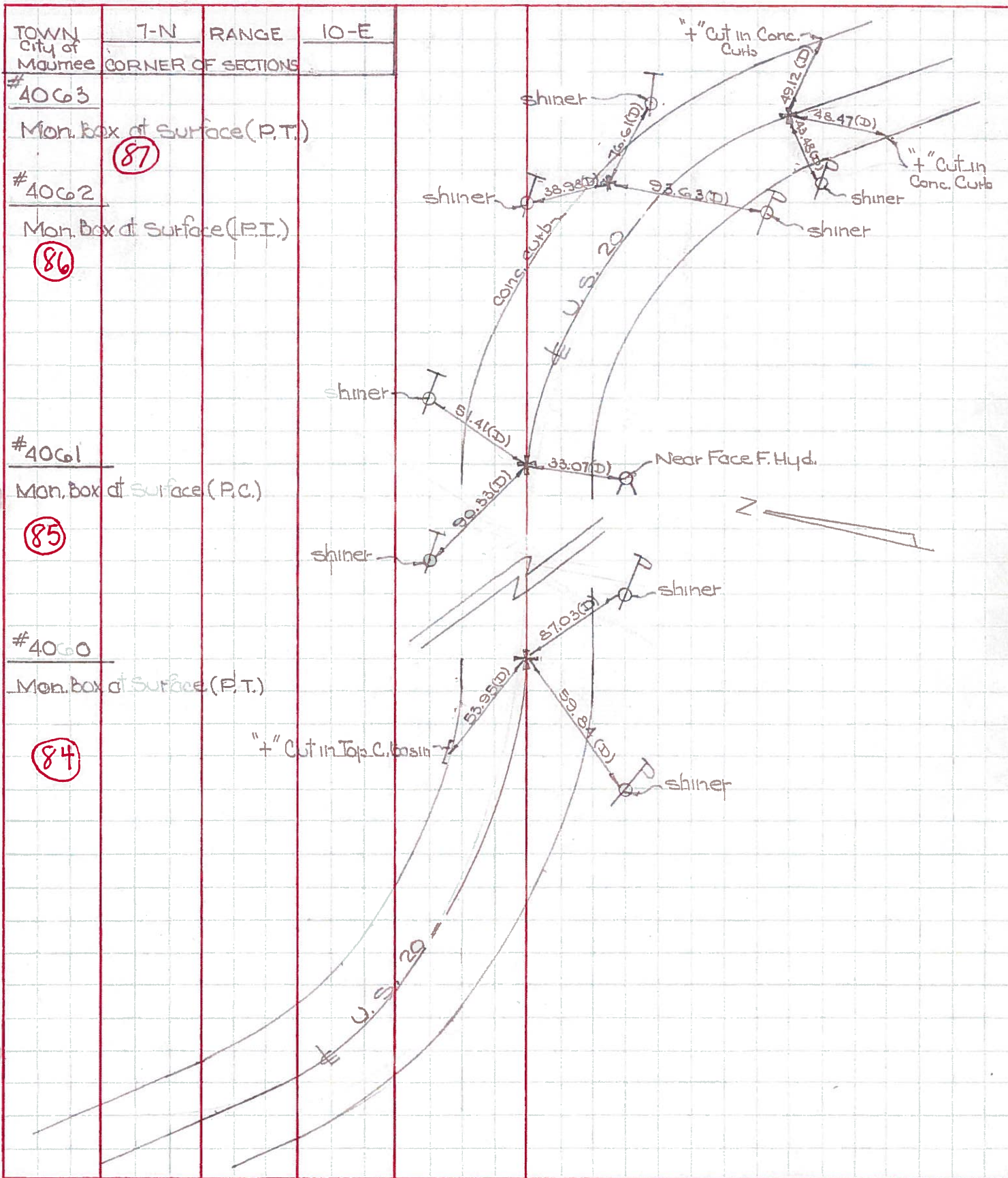
SEC.

TEMP.

55°±

DESCRIPTION U.S. 20 (Reynolds Rd) - Ref. Mon. & Control Points

JOB NO. 02994(0)



TOWN City of Maumee
7-N RANGE 10-E
CORNER OF SECTIONS

#4063

Mon. Box of Surface (P.T.)
(87)

#4062

Mon. Box of Surface (P.T.)
(86)

#4061

Mon. Box of Surface (P.C.)
(85)

#4060

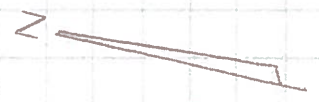
Mon. Box of Surface (P.T.)
(84)

" Cut in Top C. Basin

" Cut in Conc. Curbs

" Cut in Conc. Curbs

Near Face F. Hyd.



PERSONNEL TITLE PERSONNEL TITLE

COUNTY Lucas DATE 7 April 6

Stone
Grindley
Schroder

S. R. # 20 WEATHER Cool

SEC. _____ TEMP. 37°

DESCRIPTION

Reloc. To Conn. Pk

JOB NO. _____

LEFT

CENTER LINE

RIGHT

✓	(87)	Fd. Mon. Box P.T. Curve	41.72' E.N.E. To Shiner in T.P. 43.48' W.N.W. To Shiner in P.P. 49.12' N.E. To Chisled "4" on curb 48.47' S.W. To Chisled "4" on curb
✓	(86)	Fd. Mon. Box P.I. Curve	38.98' N.E. To Shiner in P.P. 78.18' N.W. To Shiner in T.P. 76.61' S.E. To Shiner in P.P. 93.60' S.W. To Shiner in T.P.
✓	(85)	Fd. Mon. Box P.C. Curve	075' N.W. To Shiner in T.P. 90.33' N.E. To Shiner in P.P. 51.41' S.E. To Shiner in P.P. 33.07' S.W. To Near Fore F. Hydrant
✓		Fd. Mon. Box P.T. Curve	59.84' N.W. To Shiner in P.P. 87.03' S.W. To Shiner in P.P. 53.95' N.E. To Chisled "4" in Metal Curb. etc
✓		P.I. Curve In Field	
✓	(83)	# 466 Int. Holland Rd. Fd. Mon. Box To Surface	59.21' N.W. T 5.27' S.W. T 45.23' N.E. T 8.8' S.E. T