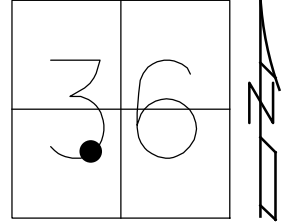


O.D.O.T. DISTRICT 2 SURVEY OFFICE (USE ONLY)

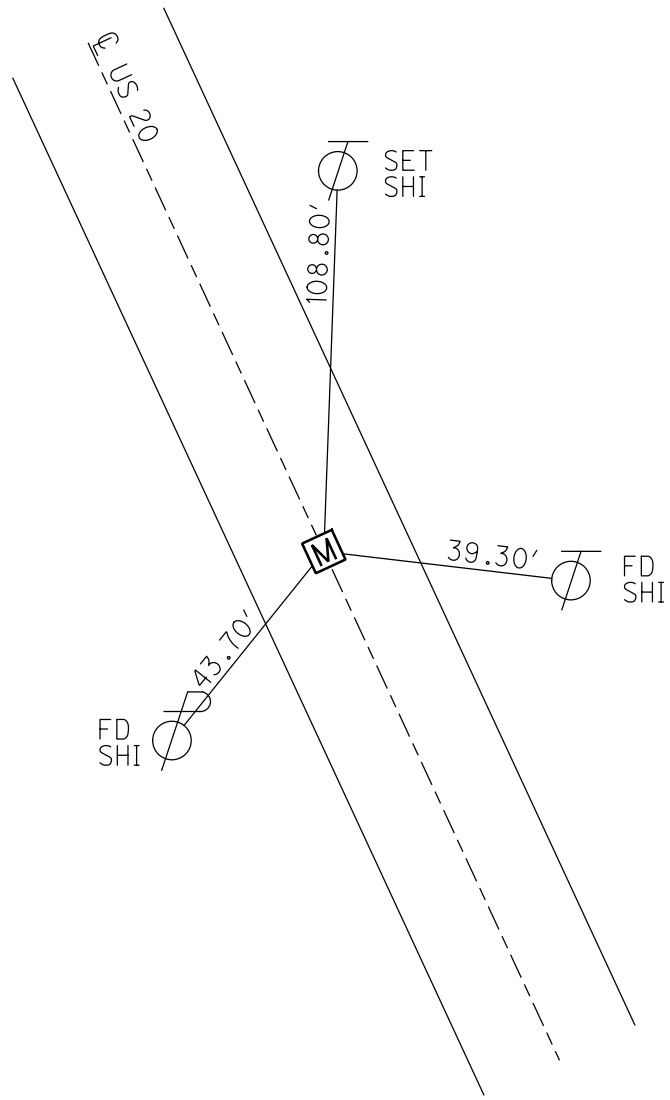
PERSONNEL _____ REFERENCE NO. 88 SHEET 42 OF 55
 NOTES HUSS DATE 7/24/97 ROUTE US 20
 H.C. LOEHRKE WEATHER CLOUDY/HUMID COUNTY LUCAS
 R.C. COX TEMP. 74° TOWNSHIP 12 MILE RESERVE
 DWG BY NIESE PID _____ SECTION 36
 T 2 US R E

TYPE MONUMENT MONBOX
 ON SURFACE - ~~BELOW~~ ON
 OFFSET CL PAVEMENT ON LT : RT
27.10' TO RT ~~EDGE PAVEMENT~~ FACE OF CURB
 STATION: 959+82



HORZ. DATUM: _____ GEOID: _____
 GRID: NORTHING: _____ EASTING: _____

RECORD:
 S.L.M. 29+255.50
 FD MONBOX
 7/24/97, CL



O.D.O.T. DISTRICT 2 SURVEY OFFICE

PERSONNEL _____

REFERENCE NO. 88

SHEET _____ OF _____

NOTES Huss

H.C. hochukc

R.C. Cox

DATE 7-24-97

WEATHER Pt Cldy - humid

TEMP. +74°F

ROUTE US -20

COUNTY Lucas

TOWNSHIP City Maumee

SECTION _____

T _____ R _____

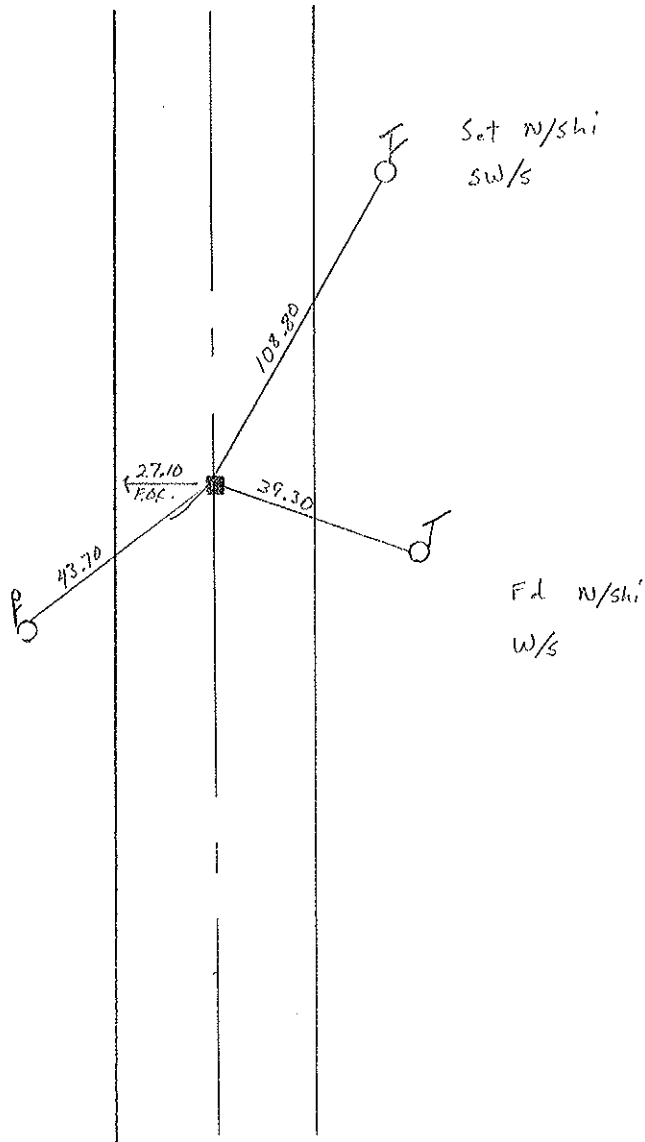
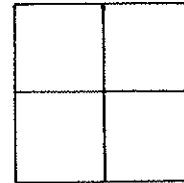
TYPE MONUMENT Mon Box

ON SURFACE - ~~BELOW~~ Yes

~~LEFT~~ - C. PAV'T - ~~RIGHT~~ _____

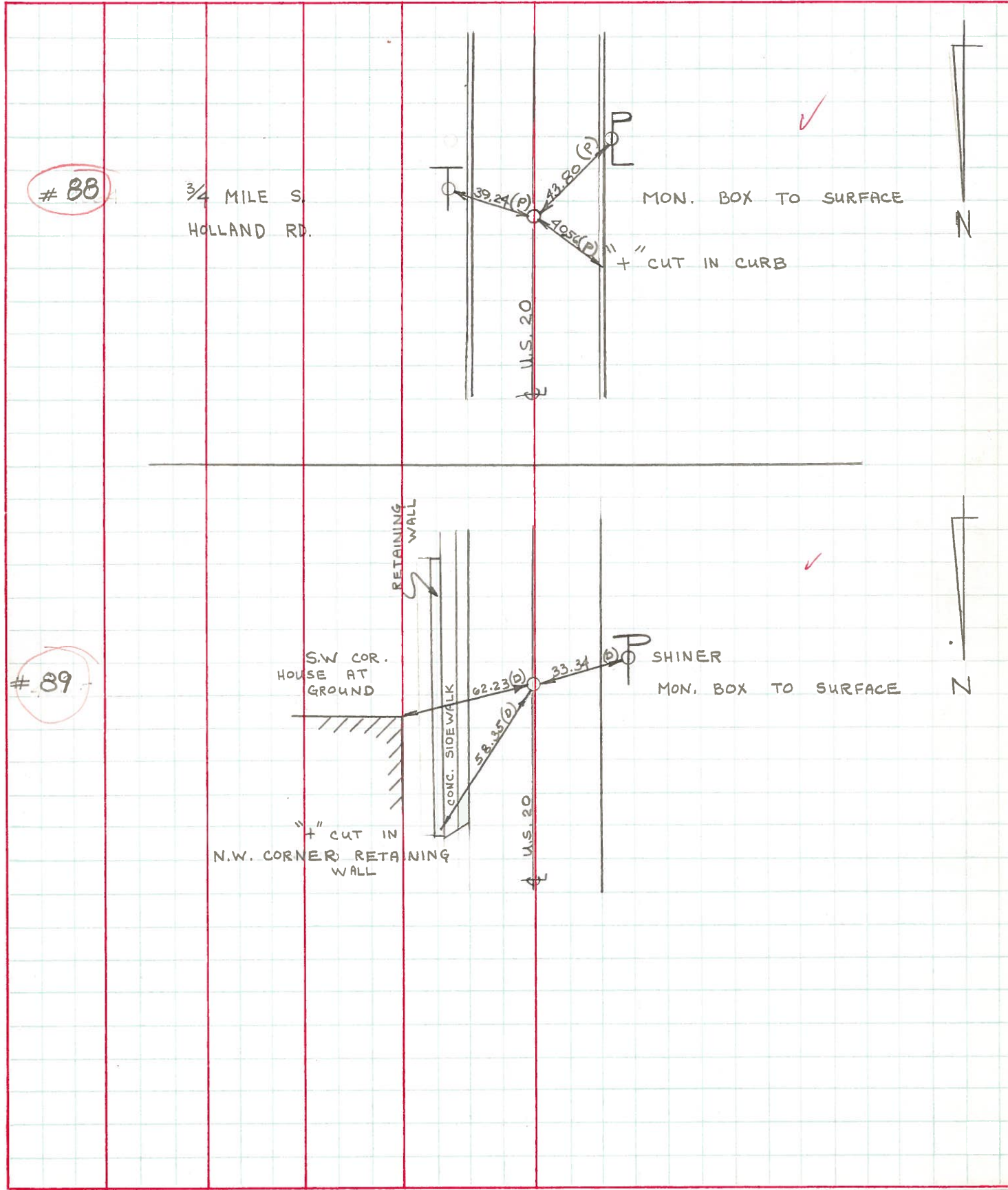
27.10 TO RT EDGE PAVEMENT Face of Curb

S.L.M. 29 + 258.50



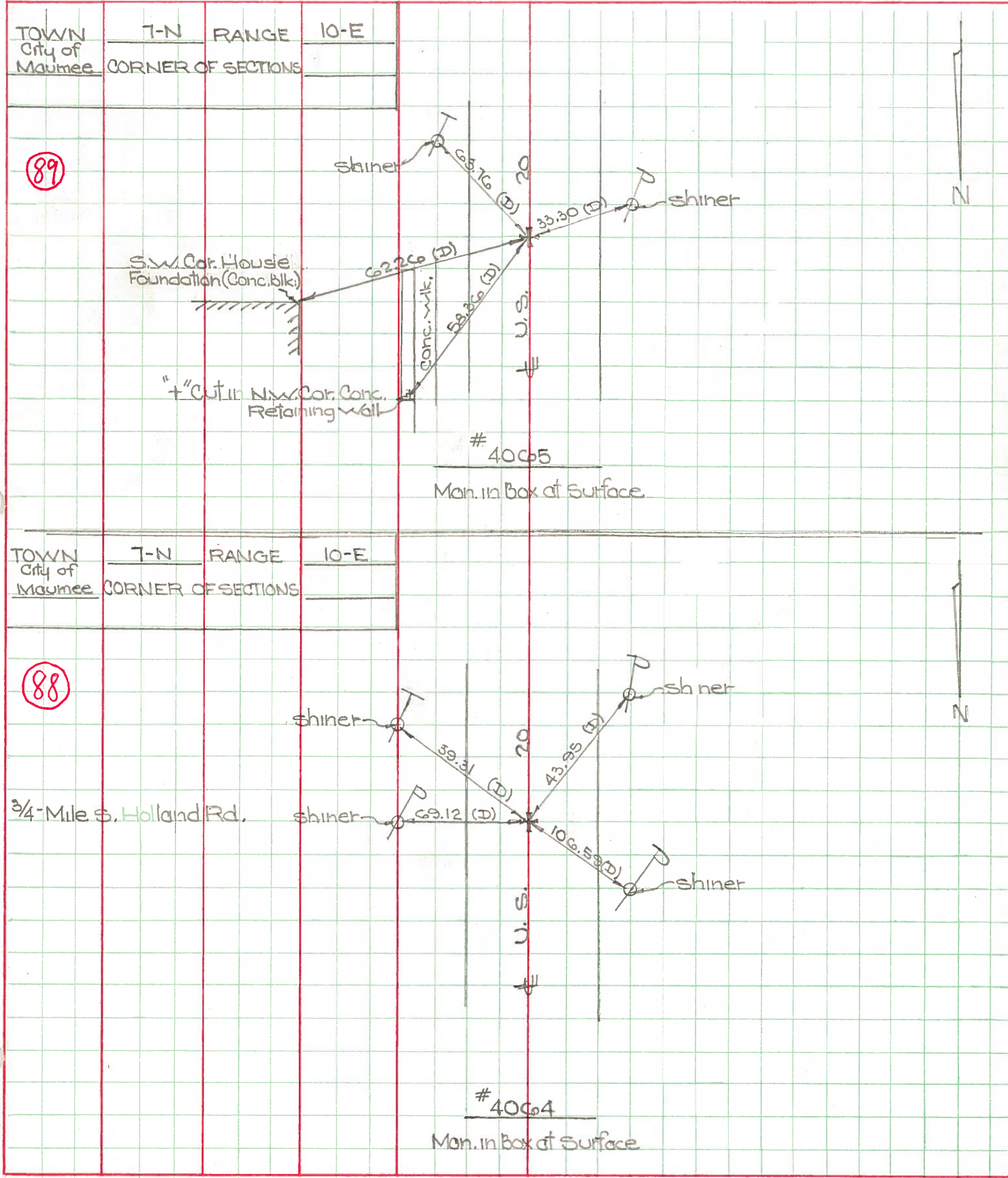
PERSONNEL	TITLE	PERSONNEL	TITLE	COUNTY	DATE	WEATHER	TEMP.
D. CURTIS				LUCAS	16 AUG 71	SUNNY	80±
D. STEVENS				U.S. 20			
R. BRANNAN							

DESCRIPTION REFERENCES TO CONTROL POINTS LEFT CENTER LINE RIGHT JOB NO.



PERSONNEL TITLE PERSONNEL TITLE COUNTY Lucas DATE May 28, 1968
 J. Curtis _____
 J. Teal _____
 J. Brindley _____
 S. R. 20 WEATHER mild
 SEC. _____ TEMP. 55 °f

DESCRIPTION U.S. 20 (Conant St.) - Ref. Mon. & Control Points LEFT CENTER LINE RIGHT JOB NO. 02994(0)



PERSONNEL TITLE PERSONNEL TITLE COUNTY Lucas DATE 7 April 66
 S. R. 20 WEATHER Cool
 SEC. Conant St. TEMP. 35°

DESCRIPTION Rds. To Control Pkts. JOB NO.

LEFT	CENTER LINE	RIGHT
✓ (94) Int. 24 & 20 Ed. Shiner & Nail to Surface	50.74' / 85.68' / 81.45' / 117.49' /	N. To Chiseled "4" on Median (D) N.E. To Chiseled "4" in L. Pole (D) S.E. To Chiseled "4" in L. Pole (D) S. To 1/2" Brass Pin 2' Below Surface
✓ (91) Int. 20-A & 20 Ed. Mon. Box To Surface	85.58' / 41.25' / 47.04' / 24.14' /	N.E. To "4" in L. Pole Base (D) E.S.E. To "4" in L. Pole Base (D) W.S.W. To "4" in L. Pole Base (D) N. To Mon. Box Int. Indiana Ave
✓ (90) Int. Indiana Ave. & US. 20 Ed. Mon. Box To Surface	65.47' / 52.03' / 61.67' / 24.14' /	N.E. To "4" in L. Pole Base (D) S.E. To "4" in L. Pole Base (D) S.W. To "4" in L. Pole Base (D) S. To Mon. Box Int. 20-A (D)
✓ (89) Ed. Mon. Box To Surface 250' E. S. of N.Y.C.R.R. Between 1020 & 1022 Conant St.	63.76' / 38.35' / 62.26' / 58.36' /	S.E. To Shiner in T.P. (D) W.S.W. To Shiner in P.P. (D) E.N.E. To S.W. Con. House Fdn. (D) N.E. To "4" on N. Edge Ret. Wall (D)
✓ (88) Ed. Mon. Box To Surface Opposite Timbers Bowling Lanes	39.31' / 43.95' / 106.59' / 69.12' /	E.S.E. To Shiner in T.P. (D) S.W. To Shiner in P.P. (D) N.W. To Shiner in P.P. (D) E. To Shiner in L.P. (D)