

O.D.O.T. DISTRICT 2 SURVEY OFFICE (USE ONLY)

PERSONNEL

REFERENCE NO. 89

SHEET 43 OF 55

NOTES HUSS  
 H.C. LOEHRKE  
 R.C. HUSS  
COX

DATE 7/24/97  
 WEATHER CLOUDY/HUMID  
 TEMP. 74°

ROUTE US 20  
 COUNTY LUCAS  
 TOWNSHIP 12 MILE RESERVE  
 SECTION 36  
 T 2 US R E

DWG BY NIESE PID \_\_\_\_\_

TYPE MONUMENT MONBOX

ON SURFACE - ~~BELOW~~ ON

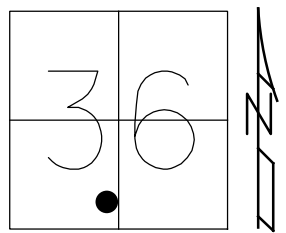
OFFSET 0 PAVEMENT ON LT : RT

27.20' TO LT ~~EDGE PAVEMENT~~ FACE OF CURB

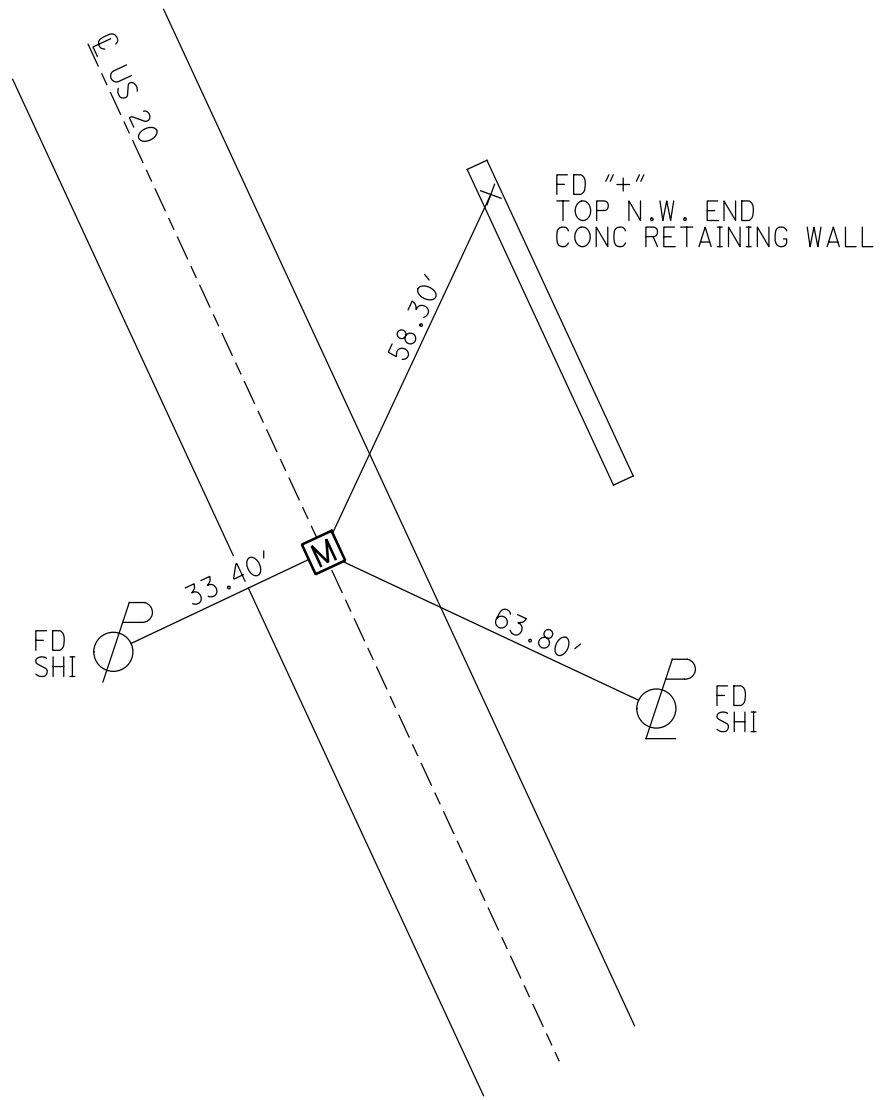
STATION: 970+44

HORZ.DATUM: \_\_\_\_\_ GEOID: \_\_\_\_\_

GRID: NORTHING: \_\_\_\_\_ EASTING: \_\_\_\_\_



RECORD:  
 S.L.M. 29+579.20  
 FD MONBOX  
 7/24/97, CL



# O.D.O.T. DISTRICT 2 SURVEY OFFICE

PERSONNEL \_\_\_\_\_

REFERENCE NO. 89

SHEET \_\_\_\_\_ OF \_\_\_\_\_

NOTES Huss

H.C. Loehrke

R.C. Huss

P Cox

DATE 7-24-97

WEATHER Cloudy - humid

TEMP. +74°F

ROUTE U.S. 20

COUNTY Lucas

TOWNSHIP City of Maumee

SECTION \_\_\_\_\_

T \_\_\_\_\_ R \_\_\_\_\_

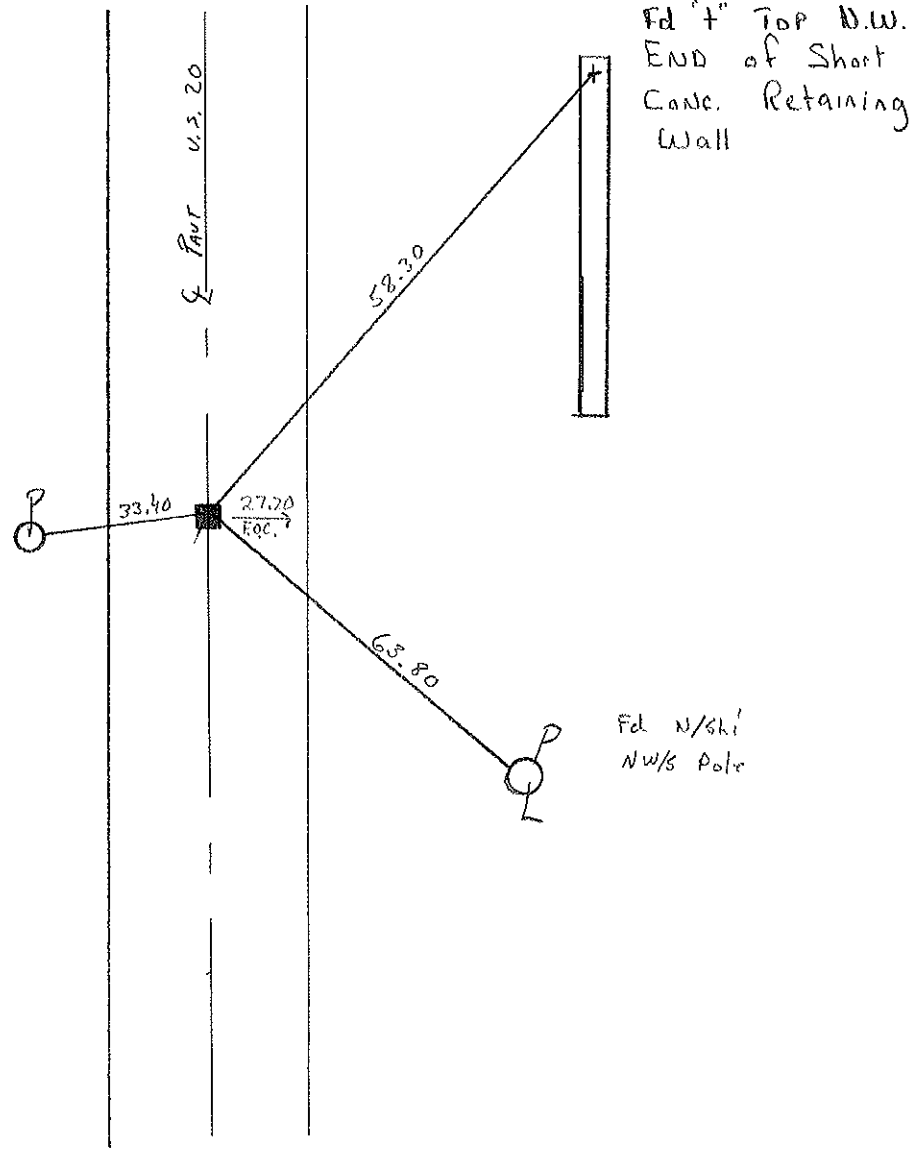
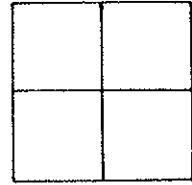
TYPE MONUMENT Mon' Box

ON SURFACE - ~~BELOW~~ Yes

LEFT - &lt;del> &lt;del> PAV'T. - RIGHT Yes

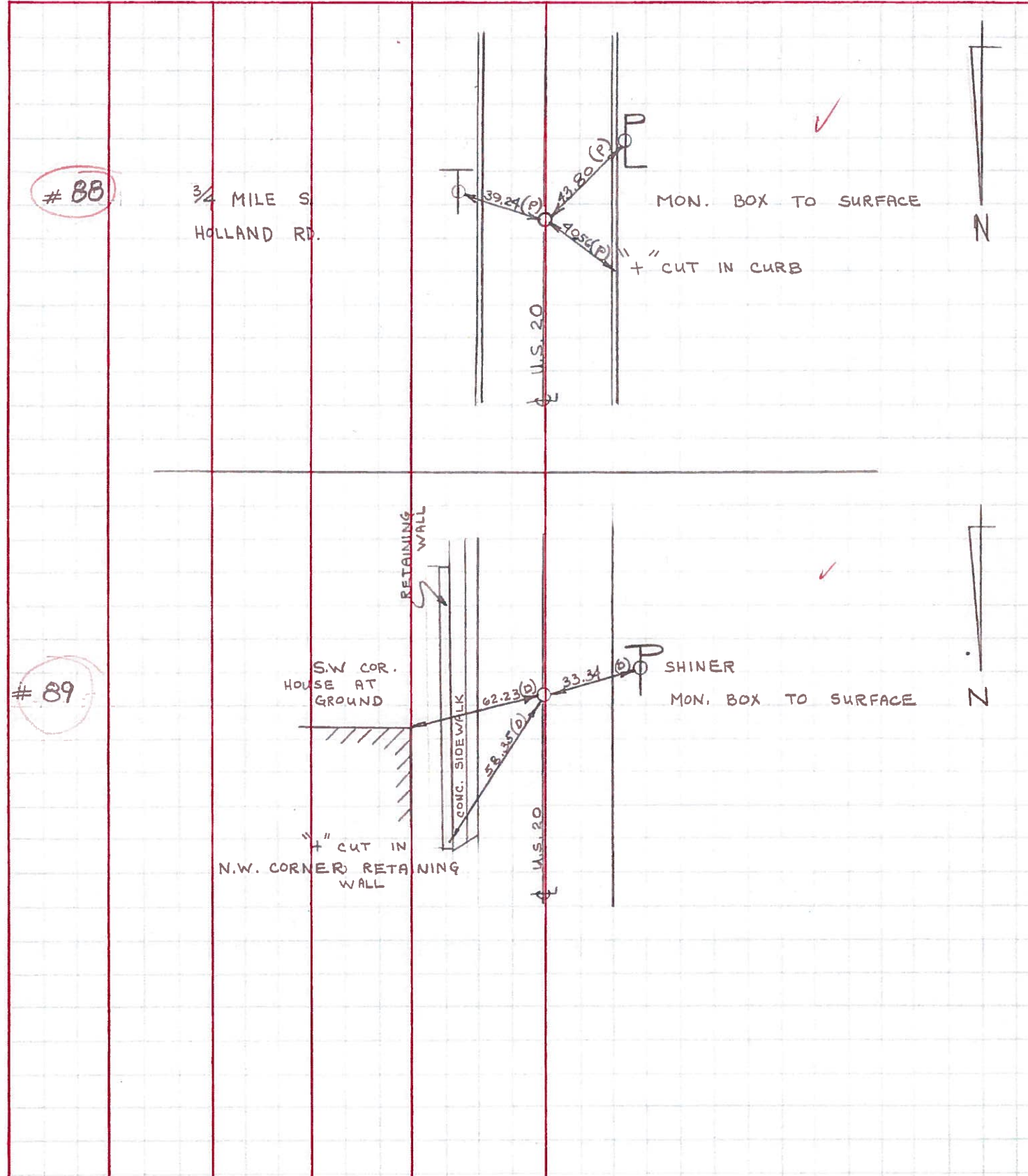
27.2 TO Lt ~~EDGE PAVEMENT~~ Face of Curbs

S.L.M. 29 + 579.2

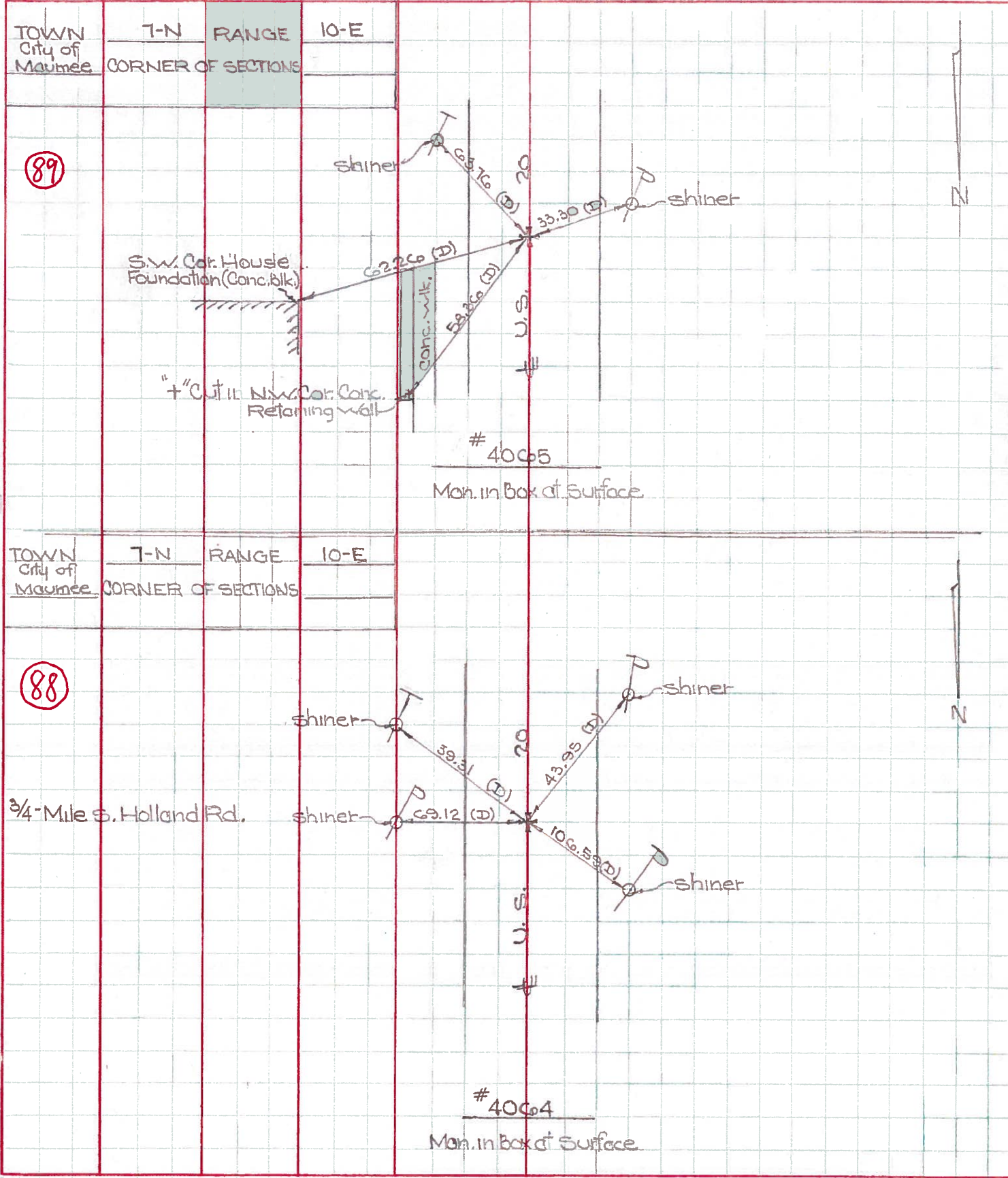


PERSONNEL	TITLE	PERSONNEL	TITLE	COUNTY	DATE	WEATHER	TEMP.
D. CURTIS				LUCAS	16 AUG 71	SUNNY	80±
D. STEVENS				U.S. 20			
R. BRANLIAN							

DESCRIPTION REFERENCES TO CONTROL POINTS LEFT CENTER LINE RIGHT JOB NO.



PERSONNEL TITLE PERSONNEL TITLE COUNTY Lucas DATE May 28, 1968  
 J. Curtis \_\_\_\_\_ J. Teal \_\_\_\_\_ S. R. 20 WEATHER mild  
 J. Brindley \_\_\_\_\_ SEC. \_\_\_\_\_ TEMP. 55°±  
 DESCRIPTION U.S. 20 (Conant St.) - Ref. Mon. & Control Points JOB NO. 02994(2)



PERSONNEL Stone TITLE \_\_\_\_\_ PERSONNEL Brindley TITLE \_\_\_\_\_ COUNTY Lucas DATE 7 April 66  
Schroder \_\_\_\_\_ \_\_\_\_\_ S. R. 20 WEATHER Cool  
 SEC. Conant St. TEMP. 85°

DESCRIPTION Rods To Control Pts. JOB NO. \_\_\_\_\_  
 LEFT CENTER LINE RIGHT

LEFT	CENTER LINE	RIGHT
✓ Int. 24 & 20 Ed. Shiner & Nail to Surface (94)	50.74' / 85.68' / 81.75' / 117.49' /	W. To Chiseled "4" on Median (2) N.E. To Chiseled "4" in L. Pole (2) S.E. To Chiseled "4" in L. Pole (2) S. To 1/2" Brass Pin 2" Below Surface.
✓ Int. 20-A & 30 Ed. Man. Box to Surface (91)	85.58' / 41.25' / 47.04' / 24.14' /	N.E. To "4" in L. Pole Base (2) E.S.E. To "4" in L. Pole Base (2) W.S.W. To "4" in L. Pole Base (2) N. To Man Box Int. Indiana Ave (2)
✓ Int. Indiana Ave. & US. 30 Ed. Man. Box to Surface (90)	65.47' / 53.03' / 61.67' / 24.14' /	N.E. To "4" in L. Pole Base (2) S.E. To "4" in L. Pole Base (2) S.W. To "4" in L. Pole Base (2) S. To Man Box Int. 20-A (2)
✓ Ed. Man. Box to Surface 250' E. S. of N. 46. R.R. Between 1020 & 1022 Conant St. (89)	63.76' / (38.35) 63.26' / 58.36' /	S.E. To Shiner in T.P. (2) W.S.W. To Shiner in T.P. (2) E.N.E. To S.W. Corn. House Fdn. (2) N.E. To "4" on N. Edge Ret. Wall (2)
✓ Ed. Man. Box to Surface Opposite Timbers Sealing Lanes (88)	39.31' / 43.75' / 106.59' / 69.12' /	E.S.E. To Shiner in T.P. (2) S.W. To Shiner in P.P. (2) N.W. To Shiner in P.P. (2) E. To Shiner in L.P. (2)