

O.D.O.T. DISTRICT 2 SURVEY OFFICE (USE ONLY)

PERSONNEL _____

REFERENCE NO. 90

SHEET 44 OF 55

NOTES HUSS

DATE 7/24/97

ROUTE US 20

H.C. LOEHRKE

WEATHER CLOUDY/HUMID

COUNTY LUCAS

R.C. HUSS

TEMP. 72°

TOWNSHIP 12 MILE RESERVE

COX

SECTION 36

DWG BY NIESE PID _____

T 2 US R E

TYPE MONUMENT MONBOX

ON SURFACE - ~~BELOW~~ ON

OFFSET Q PAVEMENT ON LT : RT

- TO - EDGE PAVEMENT

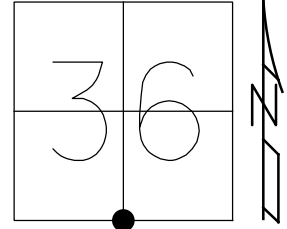
STATION: 977+40

HORZ. DATUM: _____

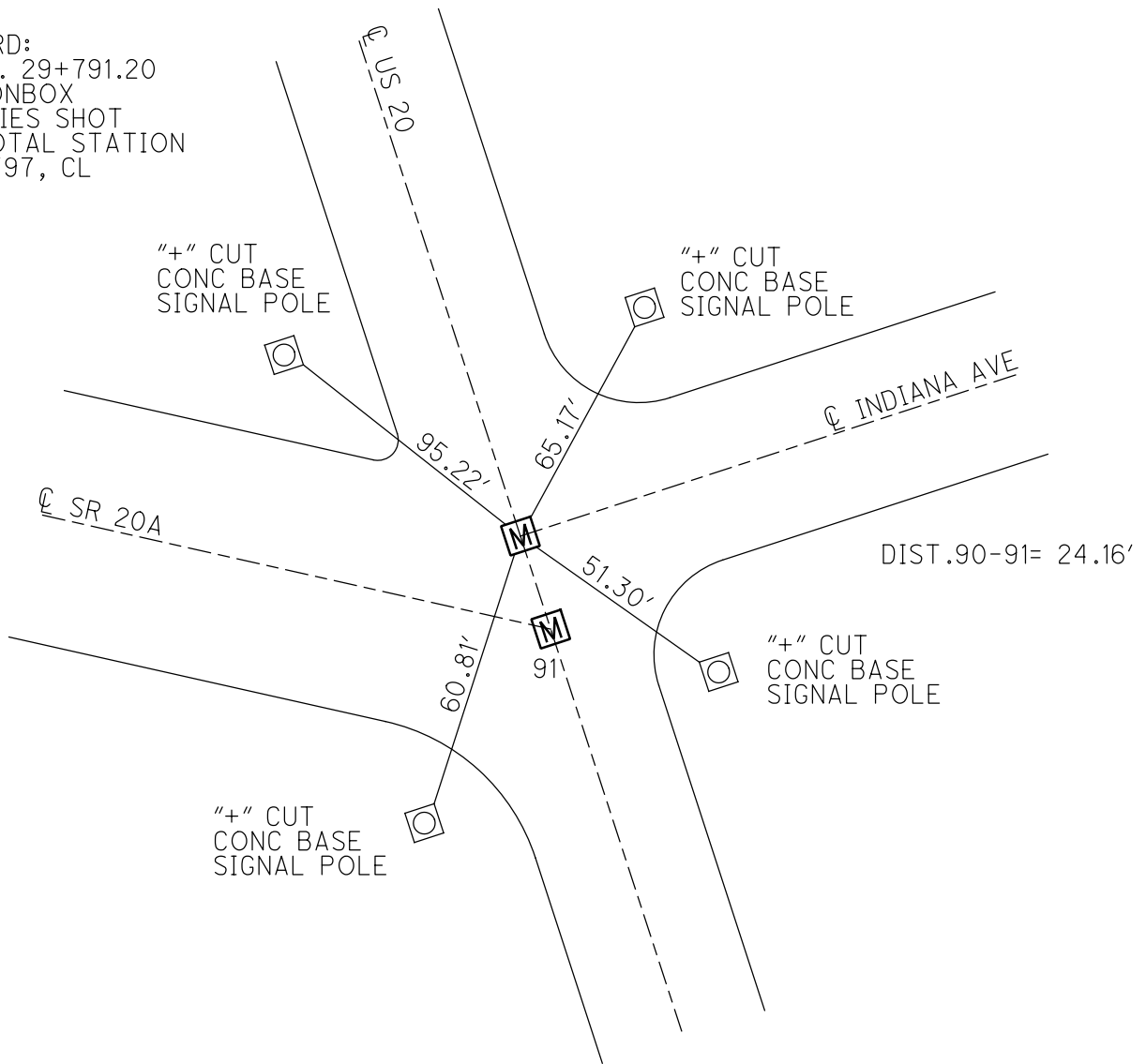
GEOID: _____

GRID: NORTHING: _____

EASTING: _____



RECORD:
S.L.M. 29+791.20
FD MONBOX
ALL TIES SHOT
W/ TOTAL STATION
7/24/97, CL



O.D.O.T. DISTRICT 2 SURVEY OFFICE

PERSONNEL

REFERENCE NO. 90591

SHEET _____ OF _____

NOTES Huss

H.C. Loehcke

DATE 7-24-97

ROUTE US-20

R.C. Huss

WEATHER Clidy - humid

COUNTY Lucas

P Cox

TEMP. +72° F

TOWNSHIP City - Maurice

SECTION _____

T _____ R _____

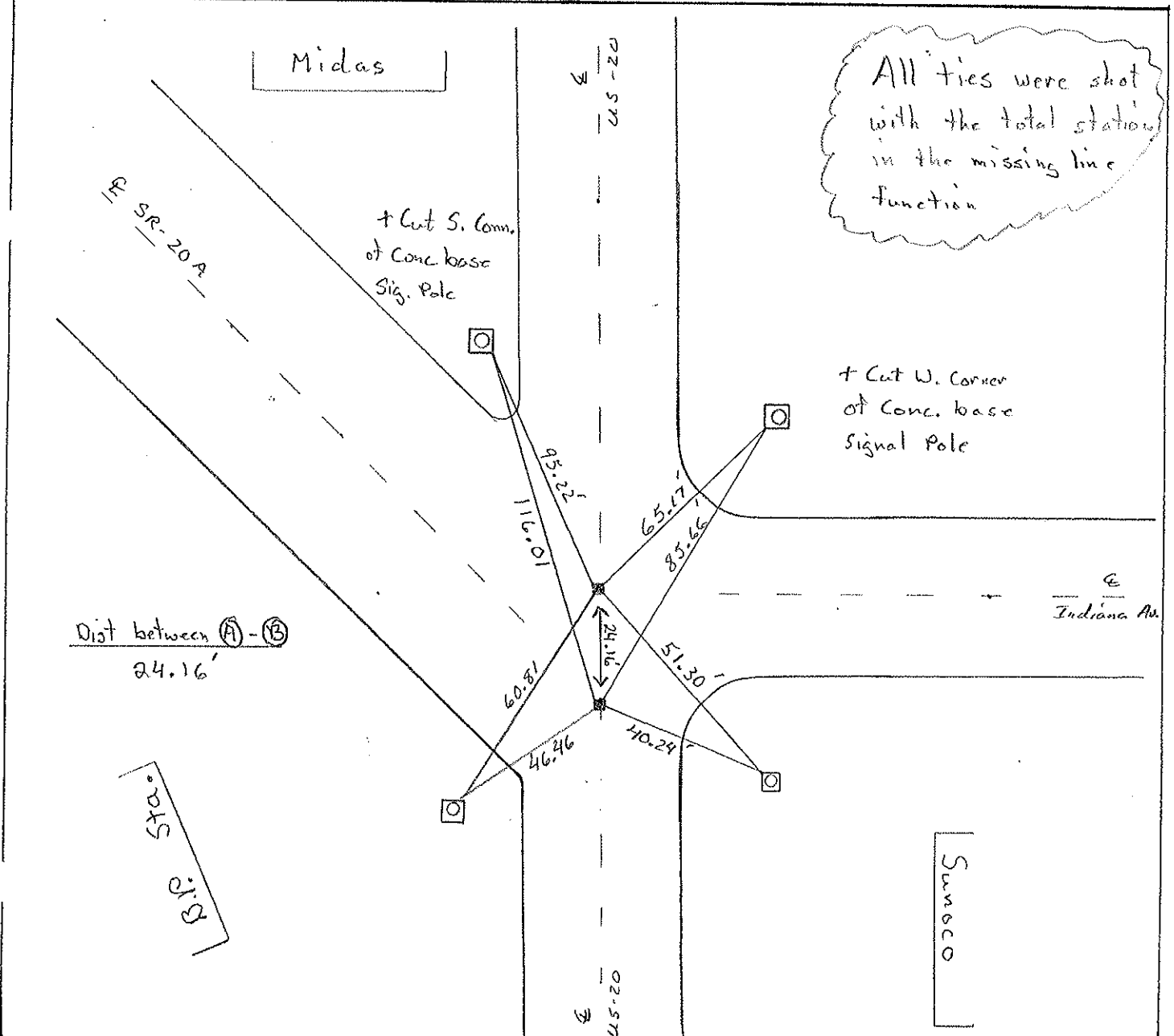
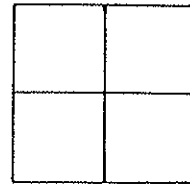
TYPE MONUMENT Monument Box

ON SURFACE - ~~BELOW~~ Yes

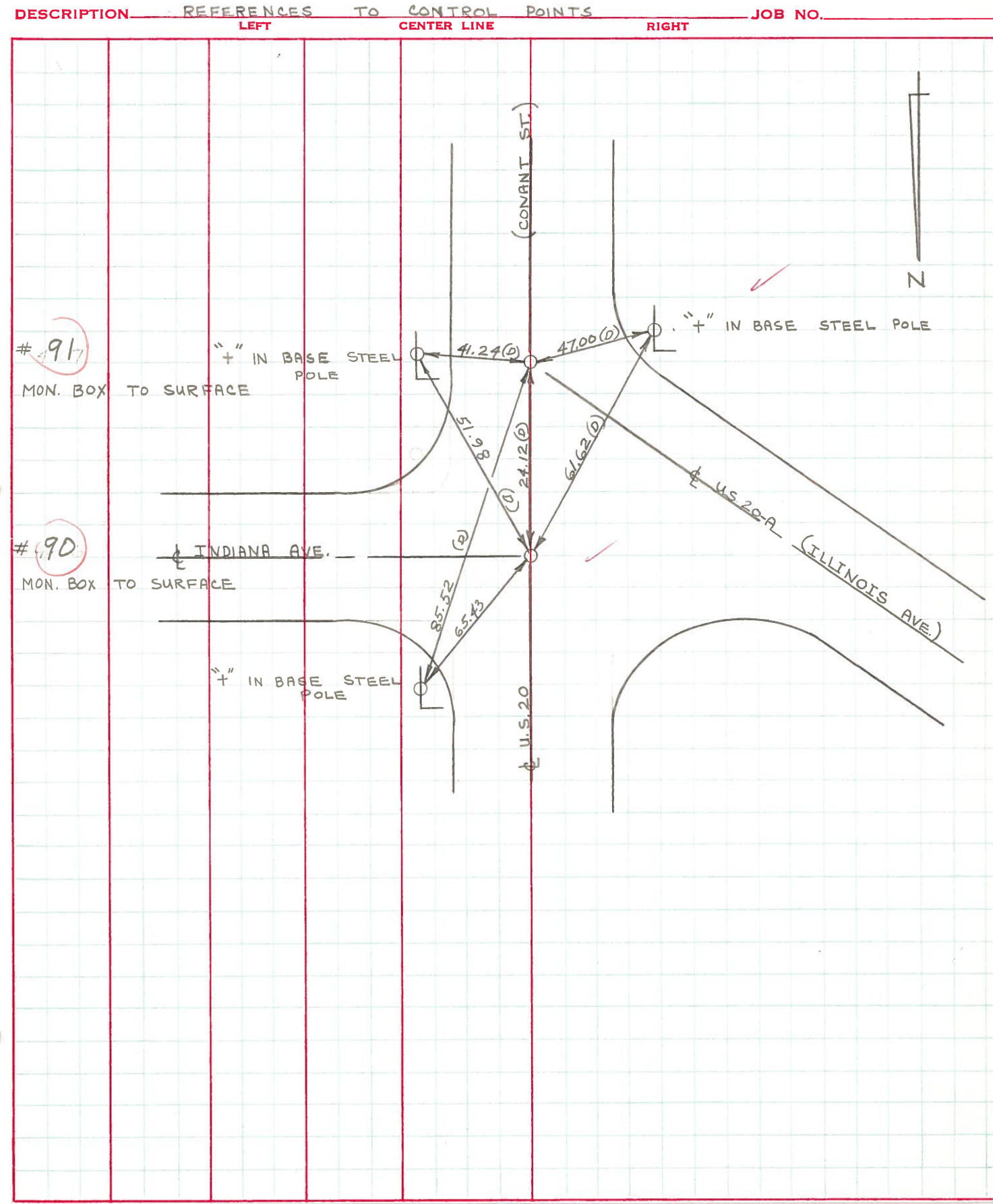
~~TO~~ - ~~E PAV'T - RIGHT~~ Yes

TO EDGE PAVEMENT

S.L.M. (A) 29 + 791.20 (B) 29 + 798.60



PERSONNEL	TITLE	PERSONNEL	TITLE	COUNTY	DATE	WEATHER	TEMP.
D. CURTIS				LUCAS	17 AUG 71	CLOUDY	60±
R. BRANNAN				U.S. 20			
D. STEVENS							



PERSONNEL TITLE PERSONNEL TITLE

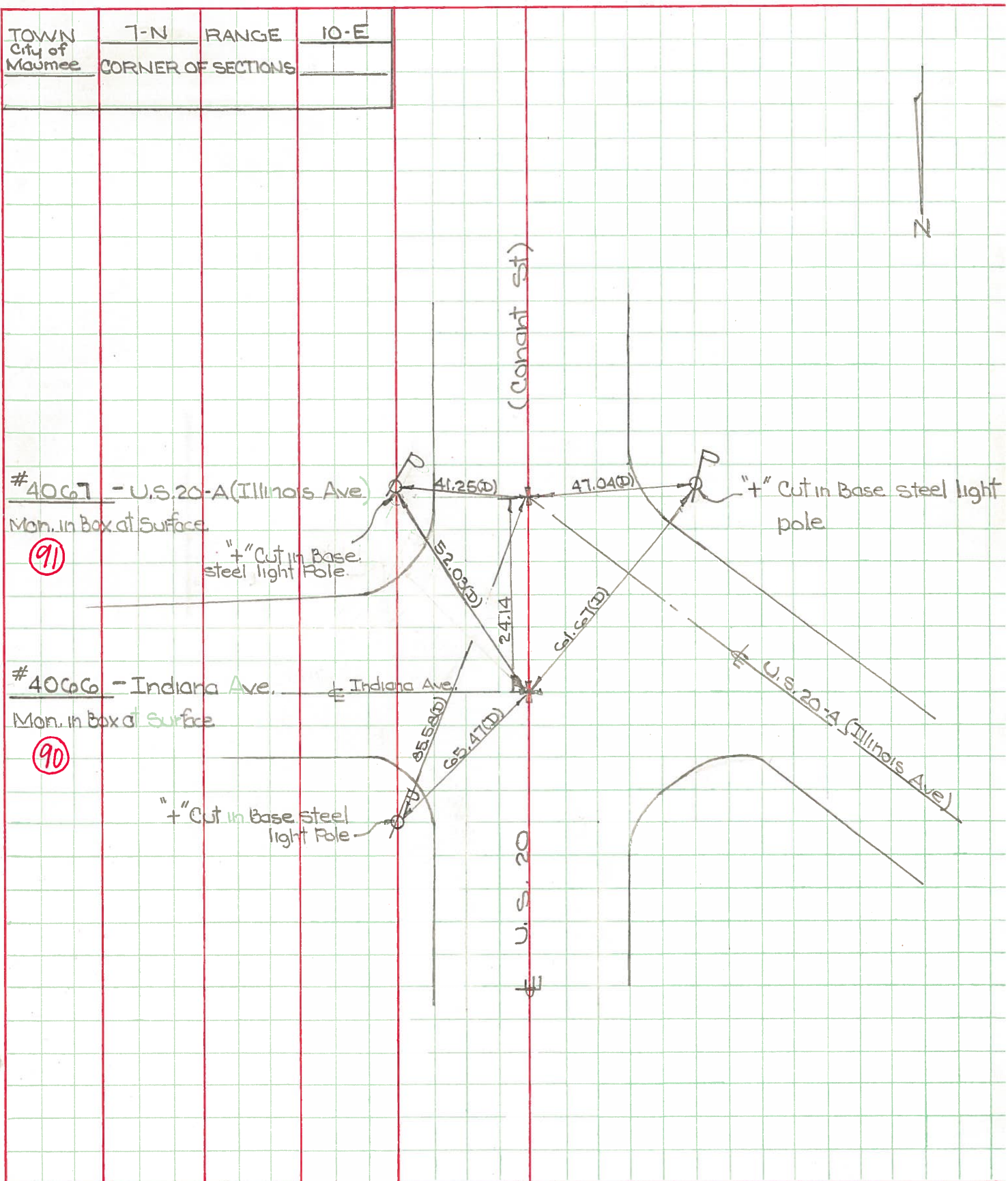
COUNTY Lucas DATE June 3, 1968

W. Denno
D. Curtis
J. Teal
J. Brindley

S. R. 20 WEATHER mild

SEC. TEMP. 75°±

DESCRIPTION U.S. 20 (Conant St) - Ref. Mon. & Control Points JOB NO. 02994 (a)



TOWN	7-N	RANGE	10-E
City of Maumee	CORNER OF SECTIONS		

PERSONNEL Edwards TITLE _____ PERSONNEL Brindley TITLE _____
Schubert TITLE _____ COUNTY Lucas DATE 7 April 66
 S. R. 20 WEATHER Cool
 SEC. Conant St. TEMP. 55°

DESCRIPTION Rds To Central Ahs. JOB NO. _____

LEFT	CENTER LINE	RIGHT
✓ (94) Int. 24 & 20 Ed. Shiner & Nail to Surface	50.74' / 85.68' / 81.45' / 117.49' /	N. To Chiseled "4" on Median (2) N.E. To Chiseled "4" in L. Pole (2) S.E. To Chiseled "4" in L. Pole (2) S. To 1/2" Brass Pin 2" Below Surface
✓ (91) Int. 20-A & 20 Ed. Man. Box to Surface	85.58' / 41.25' / 77.04' / 24.14' /	N.E. To "4" in L. Pole Base (2) E.S.E. To "4" in L. Pole Base (2) W.S.W. To "4" in L. Pole Base (2) N. To Man Box Int. Indiana Ave &
✓ (90) Int. Indiana Ave. & US. 20 Ed. Man. Box to Surface	65.47' / 52.03' / 41.67' / 24.14' /	N.E. To "4" in L. Pole Base (2) S.E. To "4" in L. Pole Base (2) S.W. To "4" in L. Pole Base (2) S. To Man Box Int. 20-A (2)
✓ (89) Ed. Man. Box to Surface 250 E. S. of R. 4 C.R.P. Between 1020 & 1022 Conant St.	63.76' / (38.35) 62.26' / 58.36' /	S.E. To Shiner in T.P. (2) W.S.W. To Shiner in T.P. (2) E.N.E. To S.W. Corner House Farm (2) N.E. To "4" on N. Edge Ret. Wall (2)
✓ (88) Ed. Man. Box to Surface Opposite Timbers Bowling Lanes	39.31' / 43.75' / 106.59' / 69.12' /	E.S.E. To Shiner in T.P. (2) S.W. To Shiner in T.P. (2) N.W. To Shiner in T.P. (2) E. To Shiner in L.P. (2)

PERSONNEL TITLE PERSONNEL TITLE

COUNTY Lucas DATE

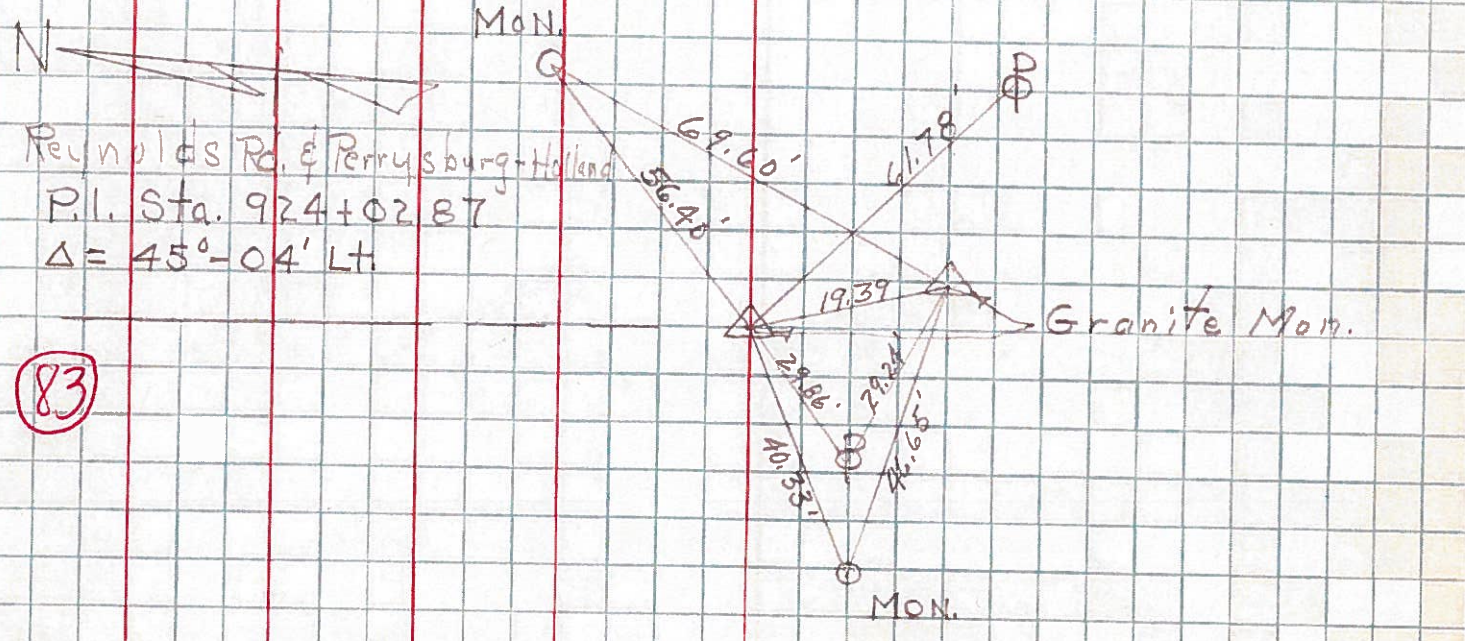
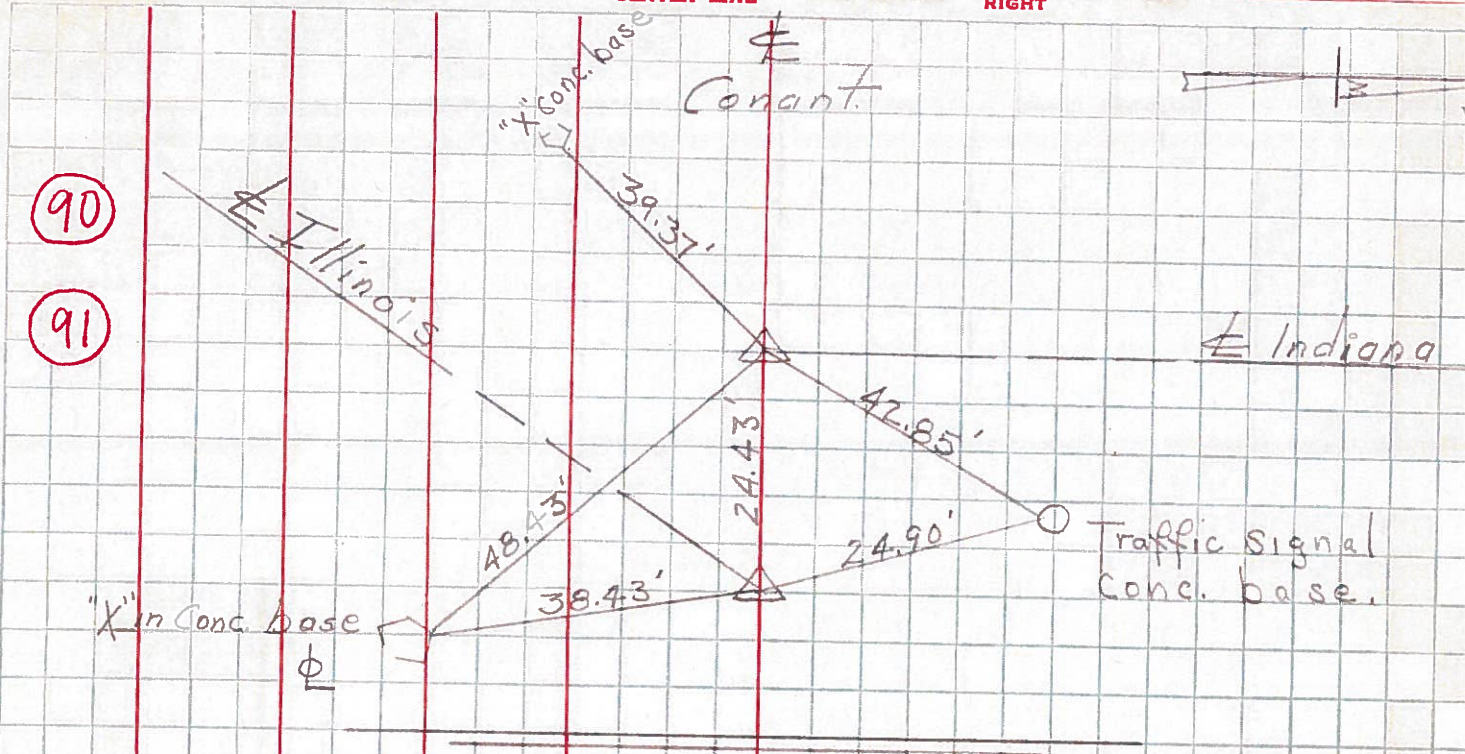
S. R. #20 (14.97) WEATHER

SEC. Maumee TEMP.

DESCRIPTION LEFT CENTER LINE RIGHT JOB NO.

90

91



83

PERSONNEL	TITLE	PERSONNEL	TITLE	COUNTY	DATE
Grude				Lucas	
Fox				S. H. S.R. #20	WEATHER
Newser				SEC.	TEMP.
VanU					
Banks					
DESCRIPTION	LEFT	CENTER LINE	RIGHT		

