

O.D.O.T. DISTRICT 2 SURVEY OFFICE (USE ONLY)

PERSONNEL

REFERENCE NO. 91

SHEET 45 OF 55

NOTES HUSS

DATE 7/24/97

ROUTE US 20

H.C. LOEHRKE

WEATHER CLOUDY/HUMID

COUNTY LUCAS

R.C. HUSS
COX

TEMP. 72°

TOWNSHIP 12 MILE RESERVE

DWG BY NIESE PID _____

SECTION 36

T 2 US R E

TYPE MONUMENT MONBOX

ON SURFACE - ~~BELOW~~ ON

OFFSET ☉ PAVEMENT ON LT : RT

- TO - EDGE PAVEMENT

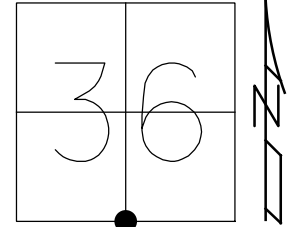
STATION: 977+64

HORZ. DATUM: _____

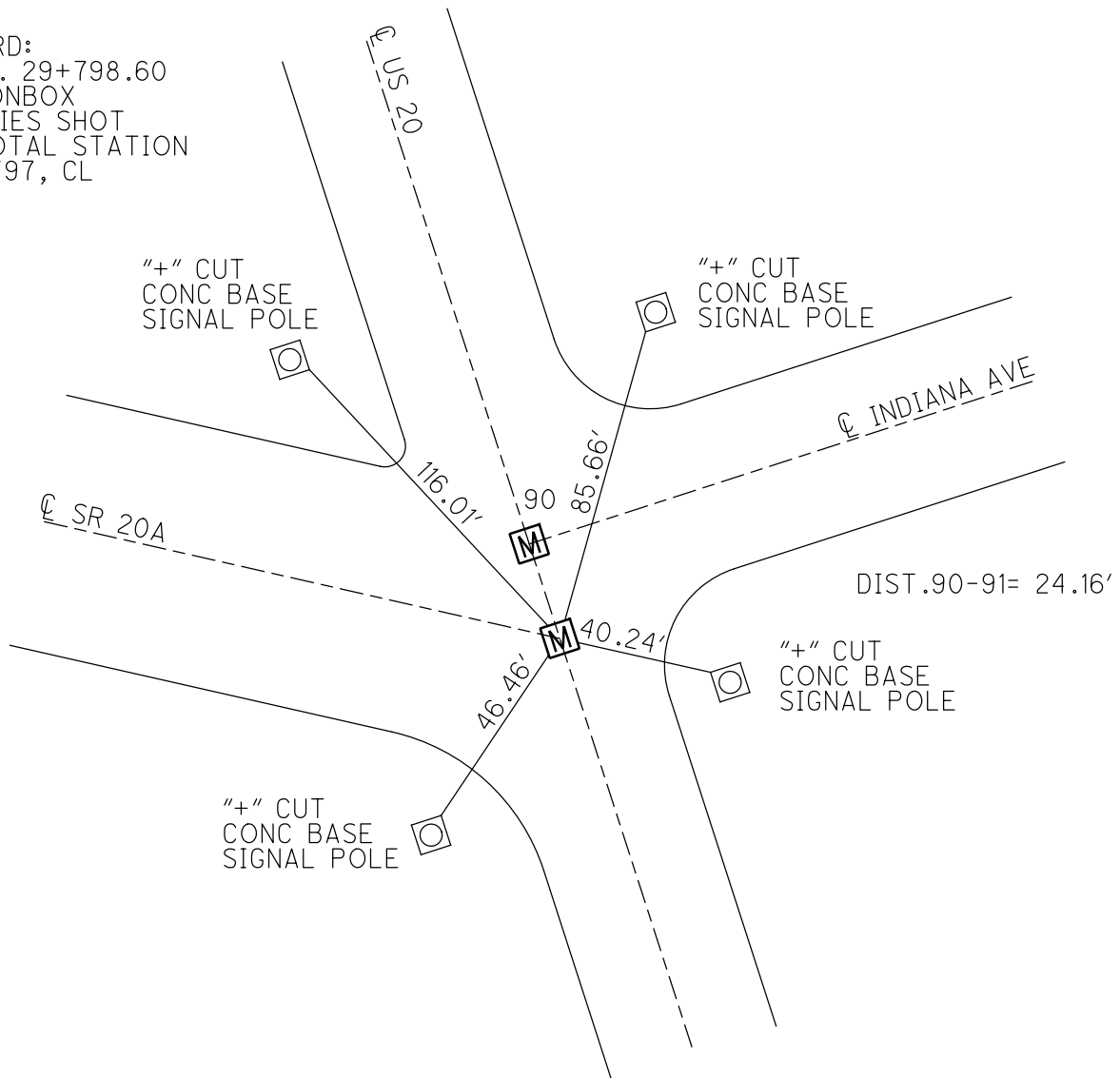
GEOID: _____

GRID: NORTHING: _____

EASTING: _____



RECORD:
S.L.M. 29+798.60
FD MONBOX
ALL TIES SHOT
W/ TOTAL STATION
7/24/97, CL



O.D.O.T. DISTRICT 2 SURVEY OFFICE

PERSONNEL _____

REFERENCE NO. 90591

SHEET _____ OF _____

NOTES Huss

H.C. Loehcke

DATE 7-24-97

ROUTE US-20

R.C. Huss

WEATHER Clidy - humid

COUNTY Lucas

P Cox

TEMP. +72° F

TOWNSHIP City - Maurice

SECTION _____

T _____ R _____

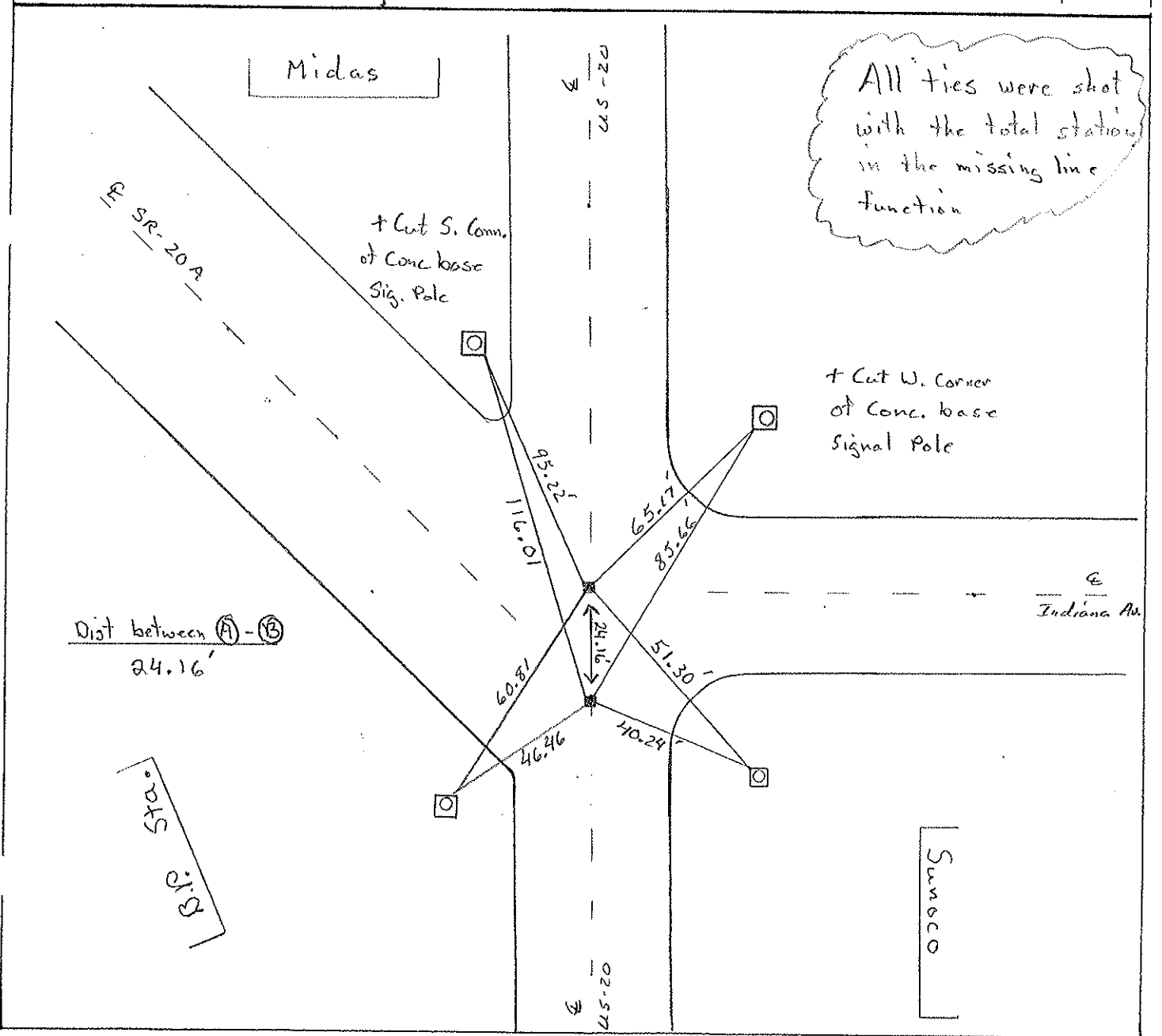
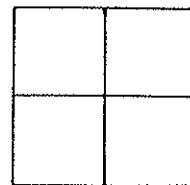
TYPE MONUMENT Monument Box

ON SURFACE - ~~BELOW~~ Yes

~~TO~~ - PAV'T - RIGHT Yes

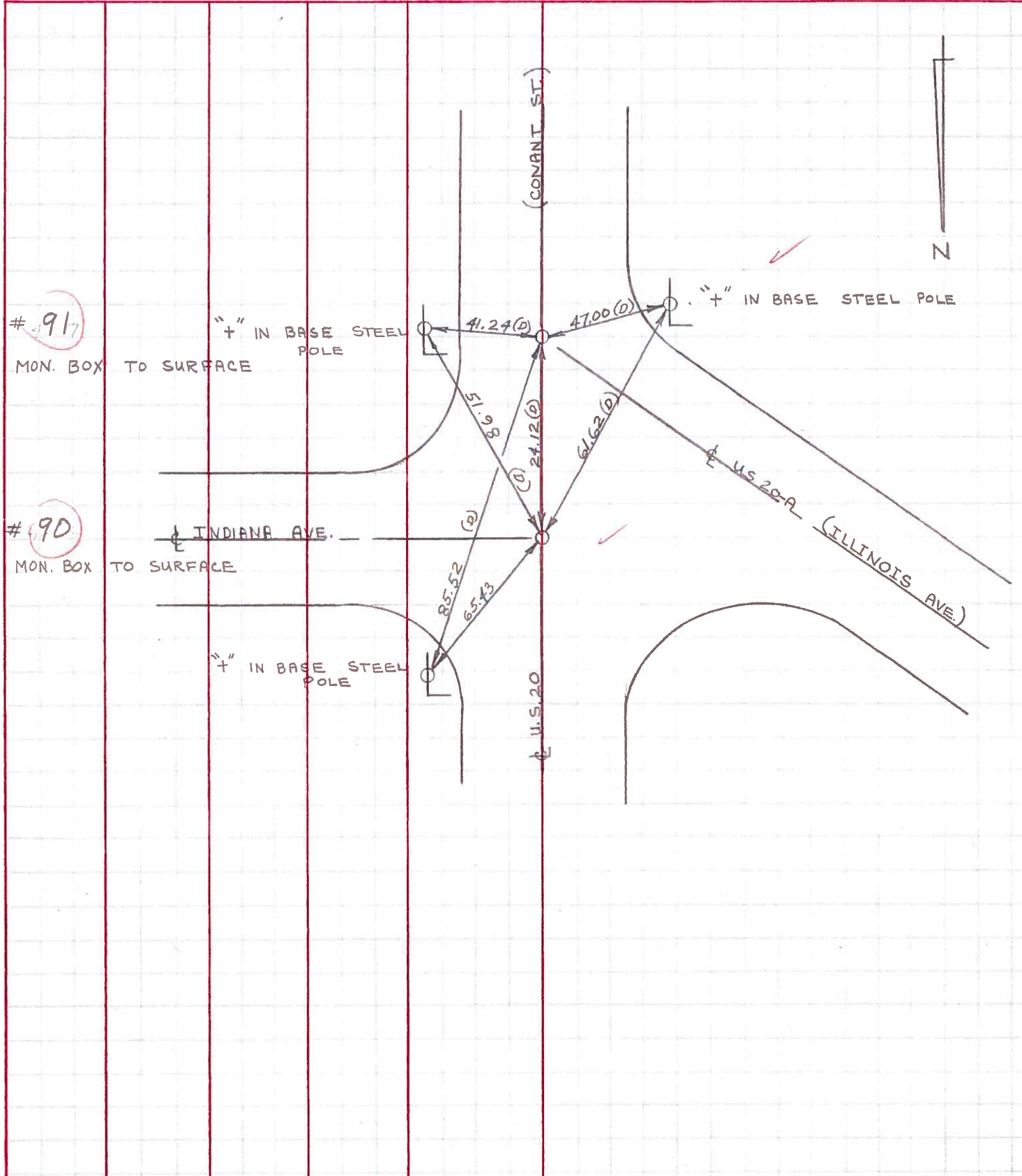
TO EDGE PAVEMENT

S.L.M. Ⓐ 29 + 791.20 Ⓑ 29 + 798.60



PERSONNEL	TITLE	PERSONNEL	TITLE	COUNTY	DATE	WEATHER	TEMP.
D. CURTIS				LUCAS	17 AUG 71	CLOUDY	60±
R. BRANNAN				U.S. 20			
D. STEVENS							

DESCRIPTION REFERENCES TO CONTROL POINTS LEFT CENTER LINE RIGHT JOB NO.



PERSONNEL TITLE PERSONNEL TITLE

COUNTY Lucas DATE June 3, 1968

W. Denna _____

S. R. 20 WEATHER mild

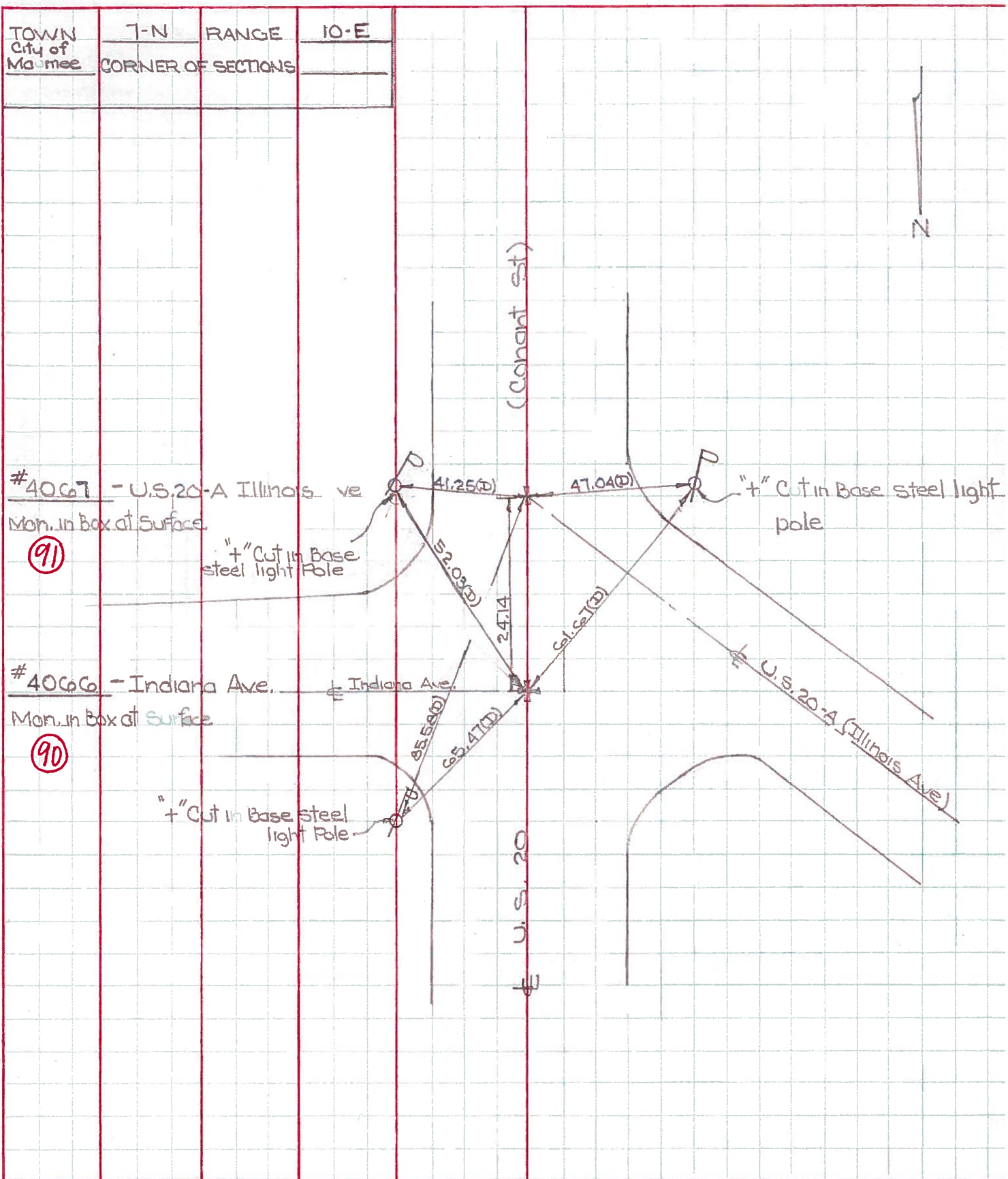
D. Curtis _____

J. Teal _____

SEC. _____ TEMP. 75°±

J. Bindley _____

DESCRIPTION U.S. 20 (Conant St) - Ref. Mon. & Control Points JOB NO. 02994 (a)



PERSONNEL TITLE PERSONNEL TITLE

COUNTY Lucas DATE 7 April 66

Edonc _____

S. R. 20 WEATHER Cool

Brindley _____

SEC. Cassant St. TEMP. 63°

Schroeder _____

DESCRIPTION Pds To Central Aqs. JOB NO. _____

LEFT CENTER LINE RIGHT

<p>✓ (94)</p>	<p>Int. 24 & 20 Ed. Shiner & Nail to Surface</p>	<p>50.74' 85.68' 81.45' 117.49'</p>	<p>N. To Chisled 7" exp. Median (2) N.E. To Chisled 7" in L. Pole (2) S.E. To Chisled 7" in L. Pole (2) S. To 1/2" Brass Pin 2" Below Surface</p>
<p>✓ (91)</p>	<p>Int. 20-A & 20 Ed. Man. Box To Surface</p>	<p>85.58' 41.25' 47.04' 24.14'</p>	<p>N.E. To 7" in L. Pole Base (2) E.S.E. To 7" in L. Pole Base (2) W.S.W. To 7" in L. Pole Base (2) N. To Man Box Int. Indiana Ave (2)</p>
<p>✓ (90)</p>	<p>Int. Indiana Ave & W.S. 20 Ed. Man. Box To Surface</p>	<p>65.47' 52.03' 61.67' 24.14'</p>	<p>N.E. To 7" in L. Pole Base (2) S.E. To 7" in L. Pole Base (2) S.W. To 7" in L. Pole Base (2) S. To Man Box Int. 20-A (2)</p>
<p>✓ (89)</p>	<p>Ed. Man. Box To Surface 250' E. S. of N.Y.C.R.R. Between 1020 & 1022 Cassant St.</p>	<p>63.76' (38.35) 62.26' 58.36'</p>	<p>S.E. To Shiner in T.P. (2) W.S.W. To Shiner in P.P. (2) E.N.E. To S.W. Cor. House Ftn. (2) N.E. To 7" on N. Edge Ret. Wall (2)</p>
<p>✓ (88)</p>	<p>Ed. Man. Box To Surface Opposite Timbers Bowling Lanes</p>	<p>39.31' 43.95' 106.59' 69.12'</p>	<p>E.S.E. To Shiner in T.P. (2) S.W. To Shiner in P.P. (2) N.W. To Shiner in P.P. (2) E. To Shiner in L.P. (2)</p>

PERSONNEL TITLE PERSONNEL TITLE

COUNTY Lucas

DATE

S. R. #20 (14.97)

WEATHER

SEC. Maumee

TEMP.

DESCRIPTION

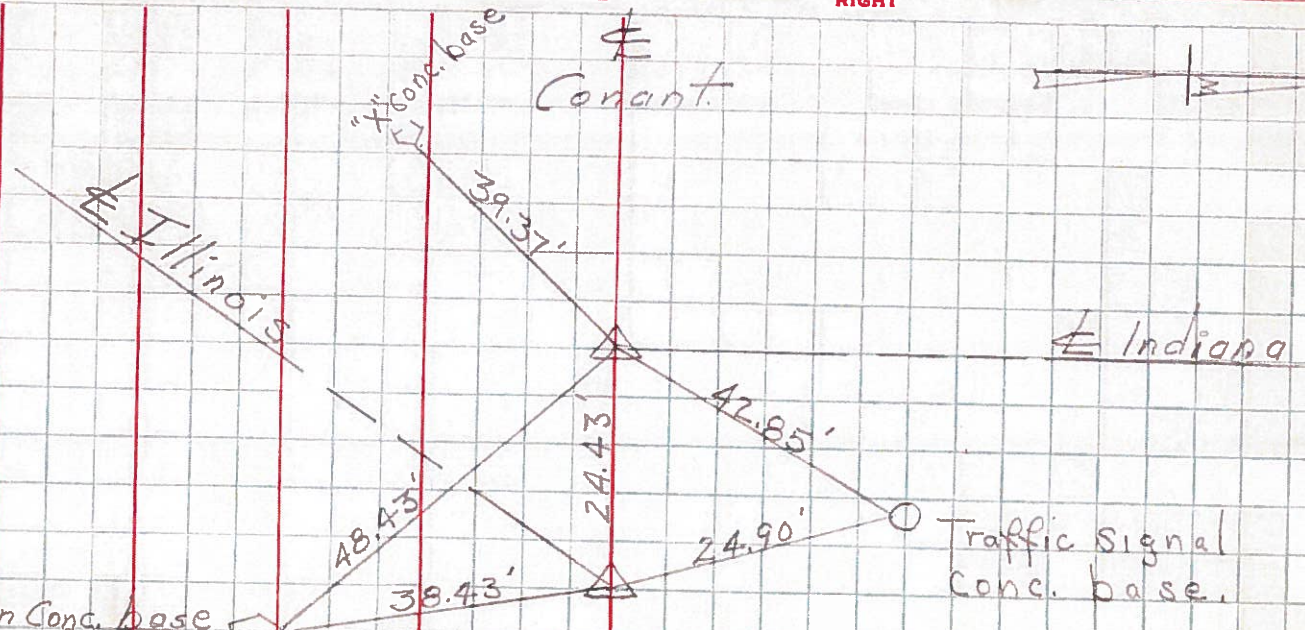
LEFT

CENTER LINE

RIGHT

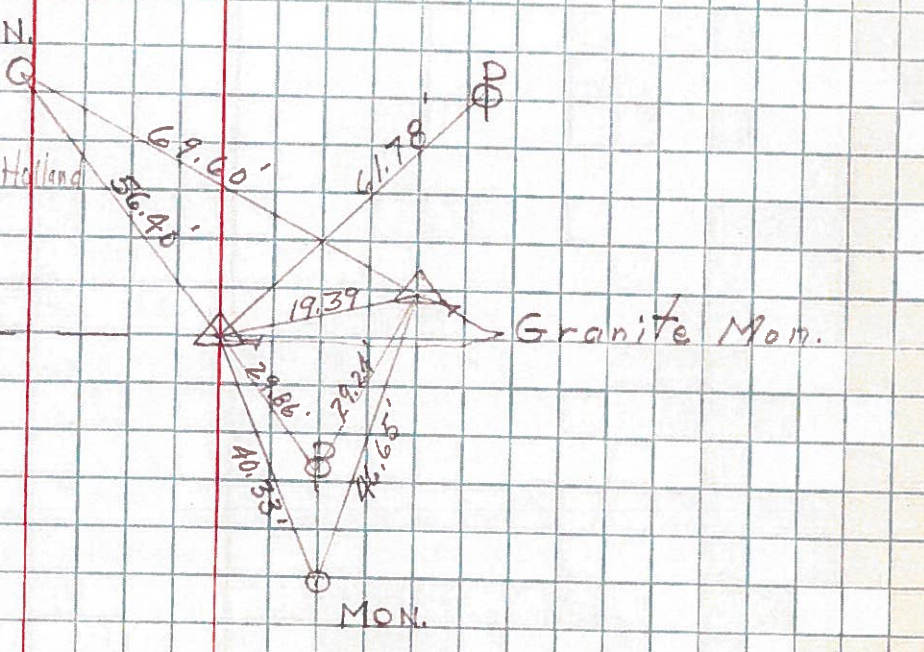
JOB NO.

90
91



N
 Reynolds Rd. & Perrysburg-Holland
 P.I. Sta. 924+02.87
 $\Delta = 45^\circ - 04' \text{ Lt.}$

83



PERSONNEL	TITLE	PERSONNEL	TITLE	COUNTY	DATE
Grude				Lucas	
Fox				S. H. S. R. # 20	
Newser					
VanU					
Banks					
DESCRIPTION	LEFT	CENTER LINE	RIGHT	SEC.	TEMP.

