

O.D.O.T. DISTRICT 2 SURVEY OFFICE (USE ONLY)

PERSONNEL

REFERENCE NO. 93

SHEET 47 OF 55

NOTES HUSS

DATE 7/24/97

ROUTE US 20

H.C. LOEHRKE

WEATHER CLOUDY/HUMID

COUNTY LUCAS

R.C. HUSS

TEMP. 74°

TOWNSHIP 12 MILE RESERVE

COX

SECTION 1

DWG BY NIESE PID _____

T 1 US R E

TYPE MONUMENT MONBOX

ON SURFACE - ~~BELOW~~ ON

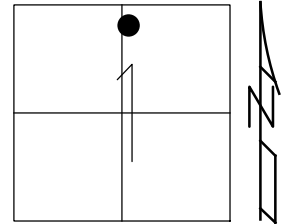
OFFSET ☉ PAVEMENT ON LT : RT

33.2' TO LT ~~EDGE PAVEMENT~~ FACE OF CURB

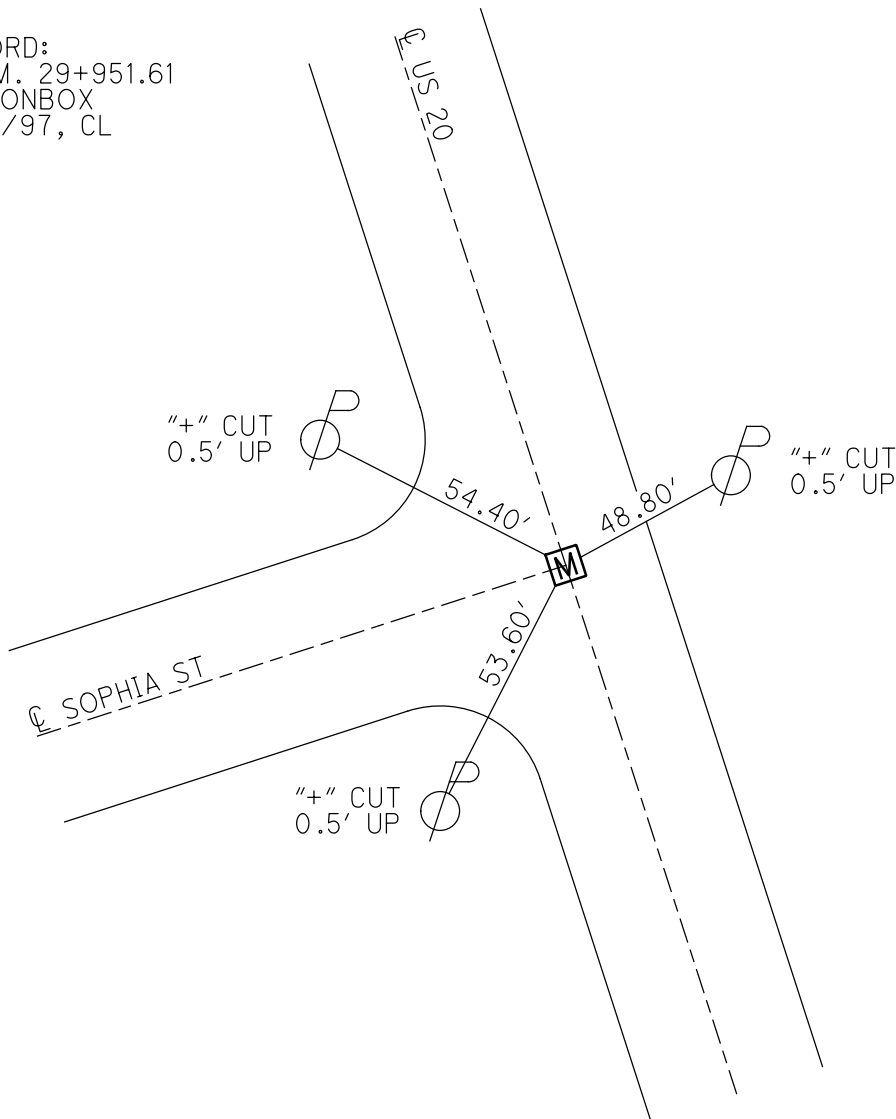
STATION: 982+66

HORZ. DATUM: _____ GEOID: _____

GRID: NORTHING: _____ EASTING: _____



RECORD:
S.L.M. 29+951.61
FD MONBOX
7/24/97, CL



O.D.O.T. DISTRICT 2 SURVEY OFFICE

PERSONNEL _____

REFERENCE NO. 93

SHEET _____ OF _____

NOTES Huss
 H.C. hochulke
 R.C. Huss
 P Cox

DATE 7-29-97
 WEATHER cloudy-humid
 TEMP. +74°F

ROUTE US-20
 COUNTY Lucas
 TOWNSHIP City - Maumee
 SECTION _____
 T _____ R _____

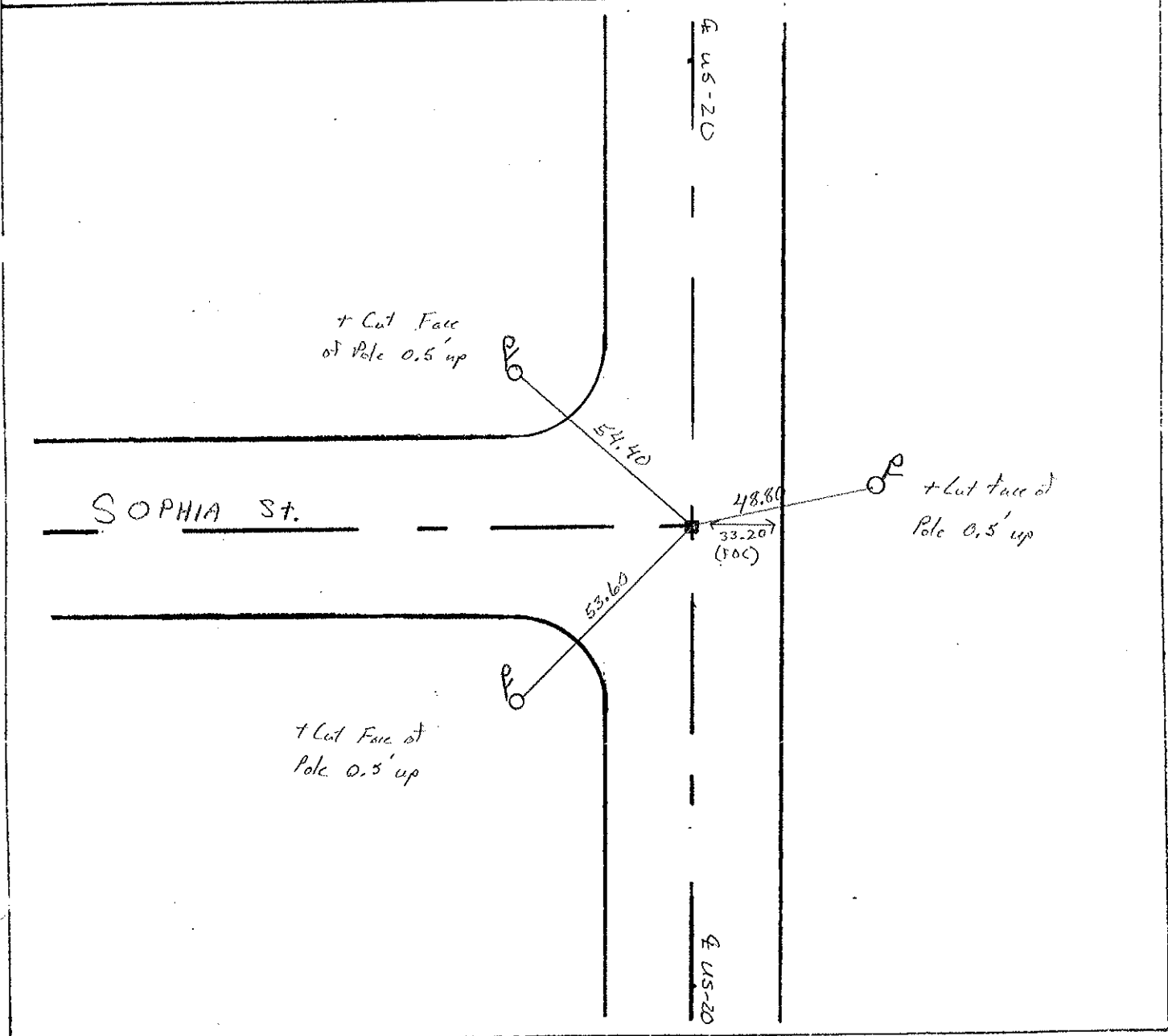
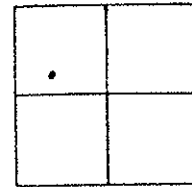
TYPE MONUMENT Monument Box

(ON SURFACE) - ~~BELOW~~ Yes

~~LEFT - (C. PAV'T) - RIGHT~~ Yes

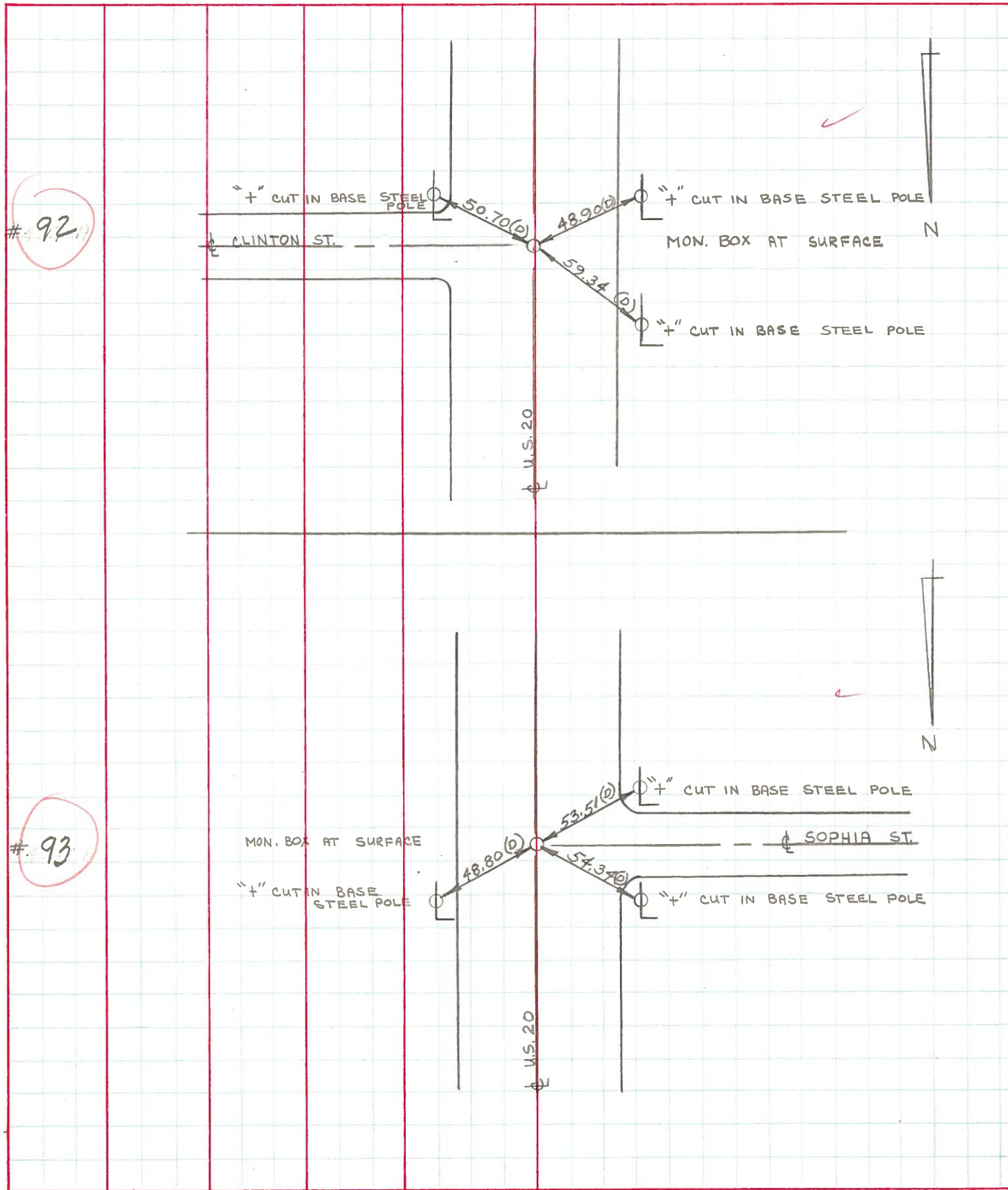
33.20 TO Lt. ~~EDGE~~ PAVEMENT Face of curb

S.L.M. 297 951.61



PERSONNEL	TITLE	PERSONNEL	TITLE	COUNTY	DATE	WEATHER	TEMP.
<u>D. CURTIS</u>				<u>LUCAS</u>	<u>17 AUG 71</u>	<u>CLOUDY</u>	<u>65±</u>
<u>D. STEVENS</u>				<u>U.S. 20</u>			
<u>R. BRANNAN</u>							

DESCRIPTION _____ REFERENCES TO CONTROL POINTS _____ JOB NO. _____
 LEFT CENTER LINE RIGHT



92

93