

O.D.O.T. DISTRICT 2 SURVEY OFFICE (USE ONLY)

PERSONNEL

REFERENCE NO. 94

SHEET 48 OF 55

NOTES LOEHRKE

DATE 7/8/99

ROUTE US 20

H.C. MOSER

WEATHER NICE

COUNTY LUCAS

R.C. BLAKE

TEMP. 76°

TOWNSHIP 12 MILE RESERVE

SECTION 1

DWG BY NIESE PID _____

T 1 US R E

TYPE MONUMENT IPIN

~~ON SURFACE~~ - BELOW 1 1/2"

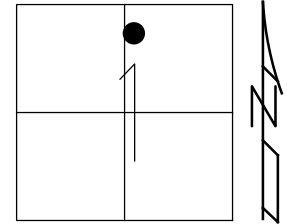
OFFSET CL PAVEMENT ON LT : RT

- TO - EDGE PAVEMENT

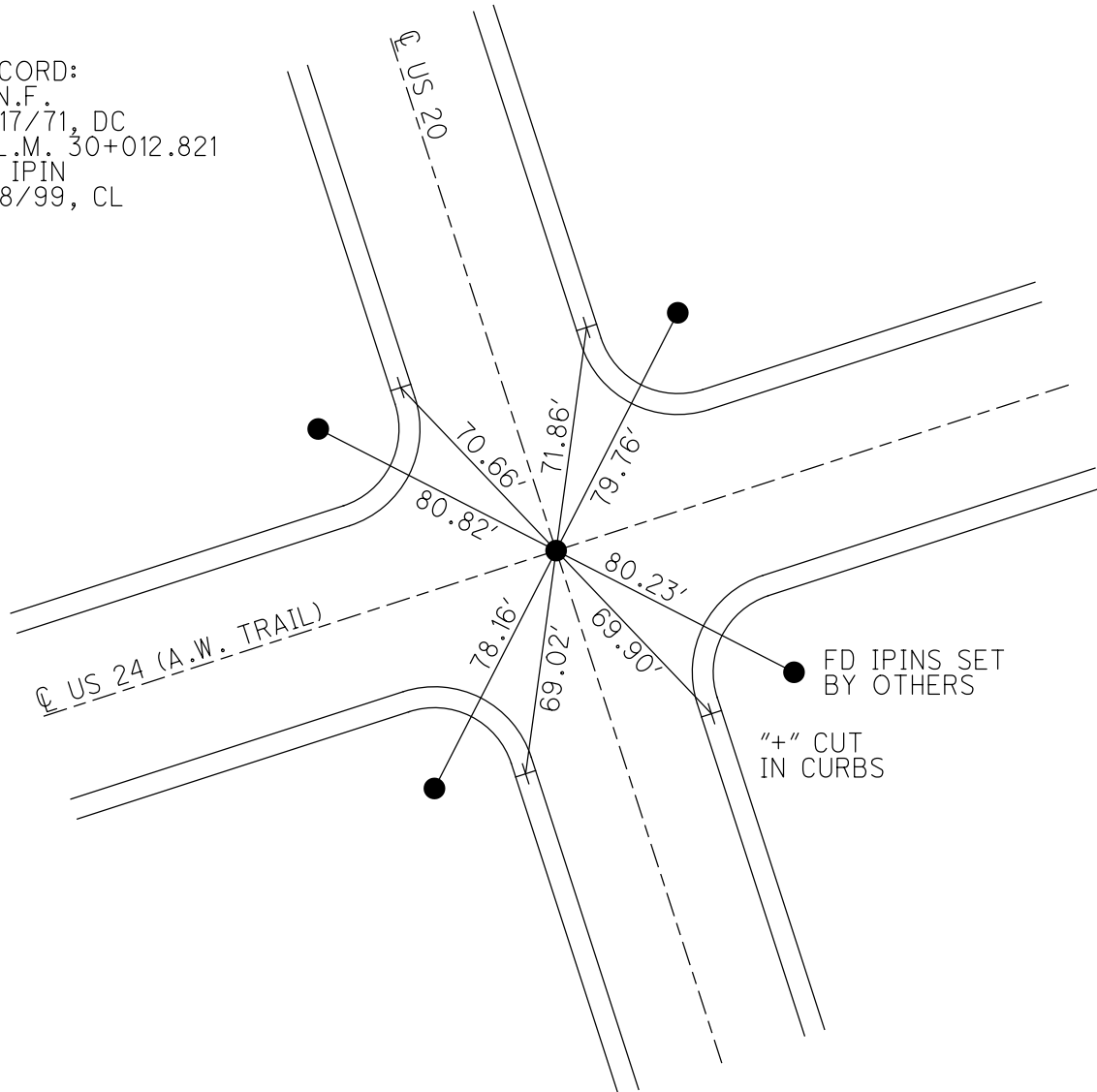
STATION: 984+67

HORZ. DATUM: _____ GEOID: _____

GRID: NORTHING: _____ EASTING: _____



RECORD:
D.N.F.
8/17/71, DC
S.L.M. 30+012.821
FD IPIN
7/8/99, CL



O.D.O.T. DISTRICT 2 SURVEY OFFICE

PERSONNEL

REFERENCE NO. 94

SHEET 1 OF 7

NOTES LOGARKE

H.C. MOSER

R.C. BLAKE

DATE 7-8-99

WEATHER Nice

TEMP. +76°

ROUTE U.S. 20

COUNTY Lucas

TOWNSHIP _____

SECTION City of MAUMEE

T _____ R _____

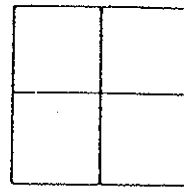
TYPE MONUMENT I Pin

ON SURFACE - BELOW 1 1/2"

LEFT - & PAV'T. - RIGHT Both

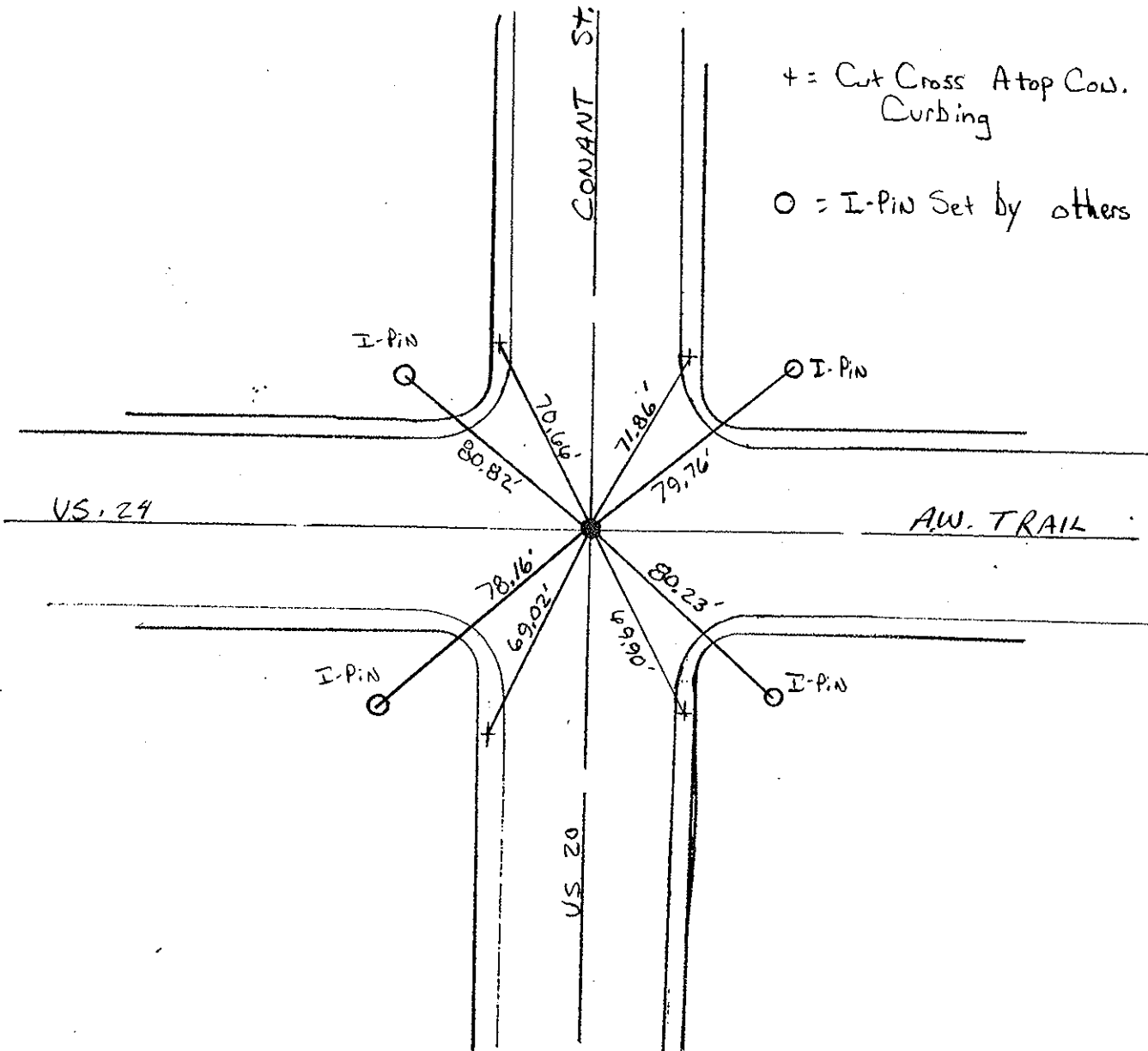
TO EDGE PAVEMENT

S.L.M. Project Sta 30 to 12, 821



+ = Cut Cross Atop C&W.
Curbing

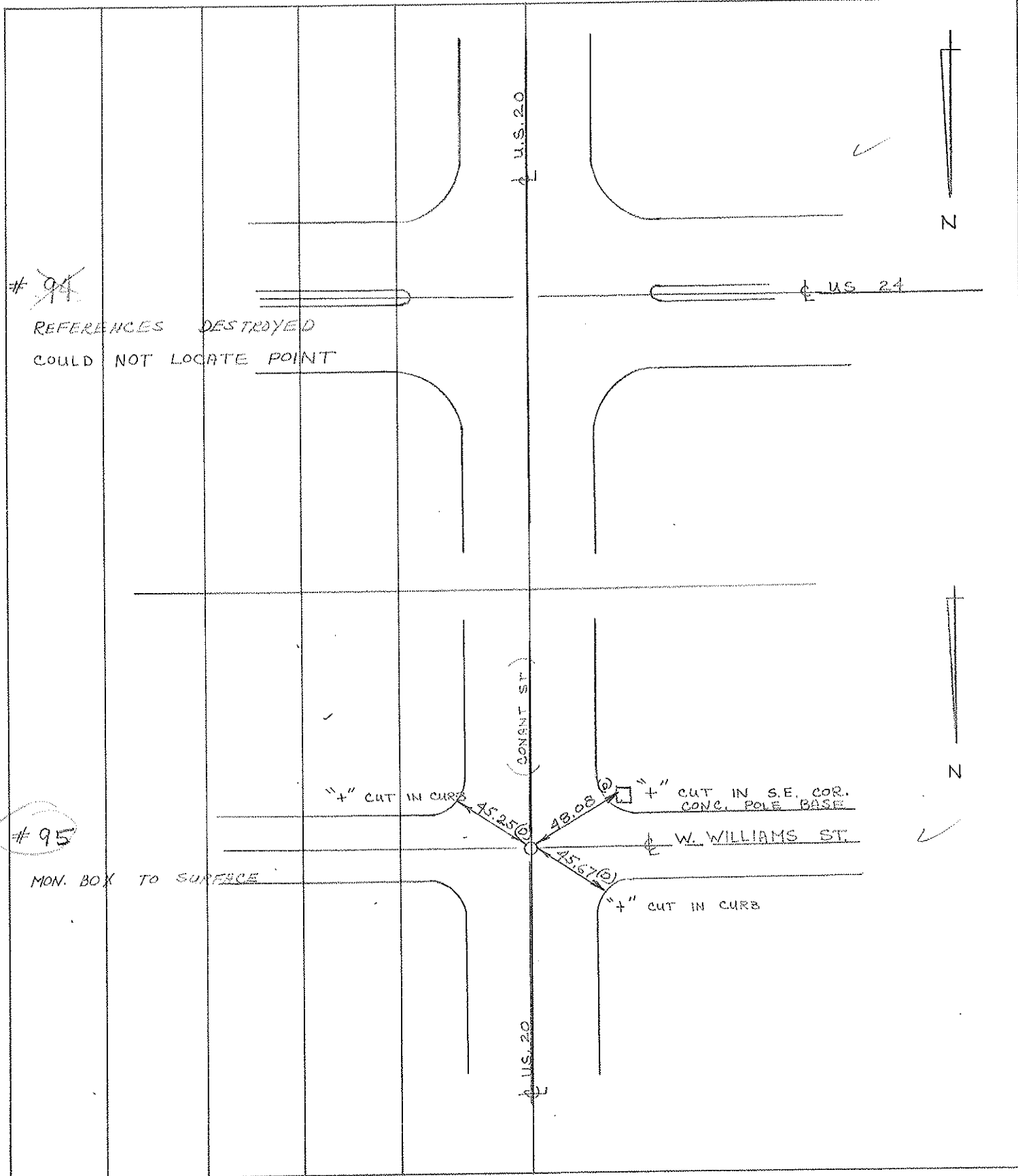
O = I-Pin Set by others



PERSONNEL	TITLE	PERSONNEL	TITLE
D. CURTIS			
P. STEVENS			
R. BRANNAN			

COUNTY LUCAS DATE 17 AUG 71
 S. R. U.S. 20 WEATHER CLOUDY
 SEC. _____ TEMP. 75⁺

DESCRIPTION _____ REFERENCES TO CONTROL POINTS _____ JOB NO. _____
 LEFT CENTER LINE RIGHT



94

REFERENCES DESTROYED
COULD NOT LOCATE POINT

95

MON. BOX TO SURFACE

"+" CUT IN CURB

"+" CUT IN S.E. COR.
CONC. POLE BASE

W. WILLIAMS ST.

"+" CUT IN CURB

PERSONNEL TITLE PERSONNEL TITLE

COUNTY Lucas DATE June 3, 1968

S. R. 20 WEATHER warm

SEC. TEMP. 75°F

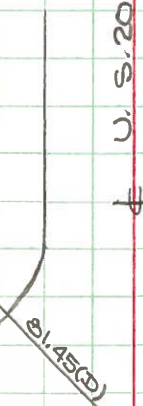
DESCRIPTION U.S. 20 (Conant St) - Ref. Mon. & Control Points JOB NO. 02994 (0)

TOWN	7-N	RANGE	10-E
City of			
Maumee	CORNER OF SECTIONS		



94

"+" Cut in steel Light Pole



Anthony Wayne Trail (U.S. 24)

Anthony Wayne

Trail (U.S. 24)



"+" Cut in steel Light Pole

"+" Cut in Conc. Med.

4068

P.K. Nail At Surface

PERSONNEL Edwnc TITLE _____ PERSONNEL Brindley TITLE _____
Schaefer TITLE _____ COUNTY Lucas DATE 7 April 66
 S. R. 20 WEATHER Cool
 SEC. Conant St. TEMP. 55°

DESCRIPTION Reds To Central A.S. JOB NO. _____

LEFT	CENTER LINE	RIGHT
✓ Int. 27 & 20 Ed. Shiner & Nail to Surface (94)	50.74' ✓ 85.68' ✓ 81.15' ✓ 117.49' ✓	N. To Chisled "4" on Median (2) N.E. To Chisled "4" in L. Pole (2) S.E. To Chisled "4" in L. Pole (2) S. To 1/2" Brass Pin 2" Below Surface
✓ Int. 20-A & 20 Ed. Mon. Box To Surface (91)	85.58' ✓ 41.25' ✓ 47.04' ✓ 24.14' ✓	N.E. To "4" in L. Pole Base (2) E.S.E. To "4" in L. Pole Base (2) W.S.W. To "4" in L. Pole Base (2) N. To Mon Box Int. Indiana Ave &
✓ Int. Indiana Ave. & US. 20 Ed. Mon. Box To Surface (90)	65.47' ✓ 52.03' ✓ 61.67' ✓ 24.14' ✓	N.E. To "4" in L. Pole Base (2) S.E. To "4" in L. Pole Base (2) S.W. To "4" in L. Pole Base (2) S. To Mon Box Int. 20-A (2)
✓ Ed. Mon. Box To Surface 250' E. S. of N.Y.C. R.R. Between 4020 & 1022 Conant St. (89)	63.76' ✓ (38.35) 62.26' ✓ 58.36' ✓	S.E. To Shiner in T.P. (2) W.S.W. To Shiner in P.P. (2) E.N.E. To S.W. Corn. House Farm (2) N.E. To "4" on N. Edge Ret. Wall (2)
✓ Ed. Mon. Box To Surface Opposite Timbers Bowling Lanes (88)	39.31' ✓ 43.95' ✓ 106.59' ✓ 69.12' ✓	E.S.E. To Shiner in T.P. (2) S.W. To Shiner in P.P. (2) N.W. To Shiner in P.P. (2) E. To Shiner in L.P. (2)