

O.D.O.T. DISTRICT 2 SURVEY OFFICE (USE ONLY)

PERSONNEL

REFERENCE NO. 95 A

SHEET 50 OF 55

NOTES LOEHRKE

DATE 7/8/99

ROUTE US 20

H.C. MOSER

WEATHER NICE

COUNTY LUCAS

R.C. BLAKE

TEMP. 78°

TOWNSHIP 12 MILE RESERVE

SECTION 1

DWG BY NIESE

PID _____

T 1 US R E

TYPE MONUMENT IPIN

~~ON SURFACE~~ - BELOW 1 1/2"

OFFSET ☉ PAVEMENT ON LT : RT

- TO - EDGE PAVEMENT

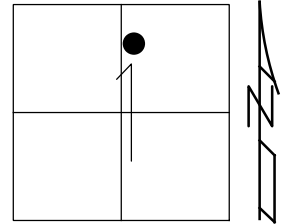
STATION: 990+06

HORZ. DATUM: _____

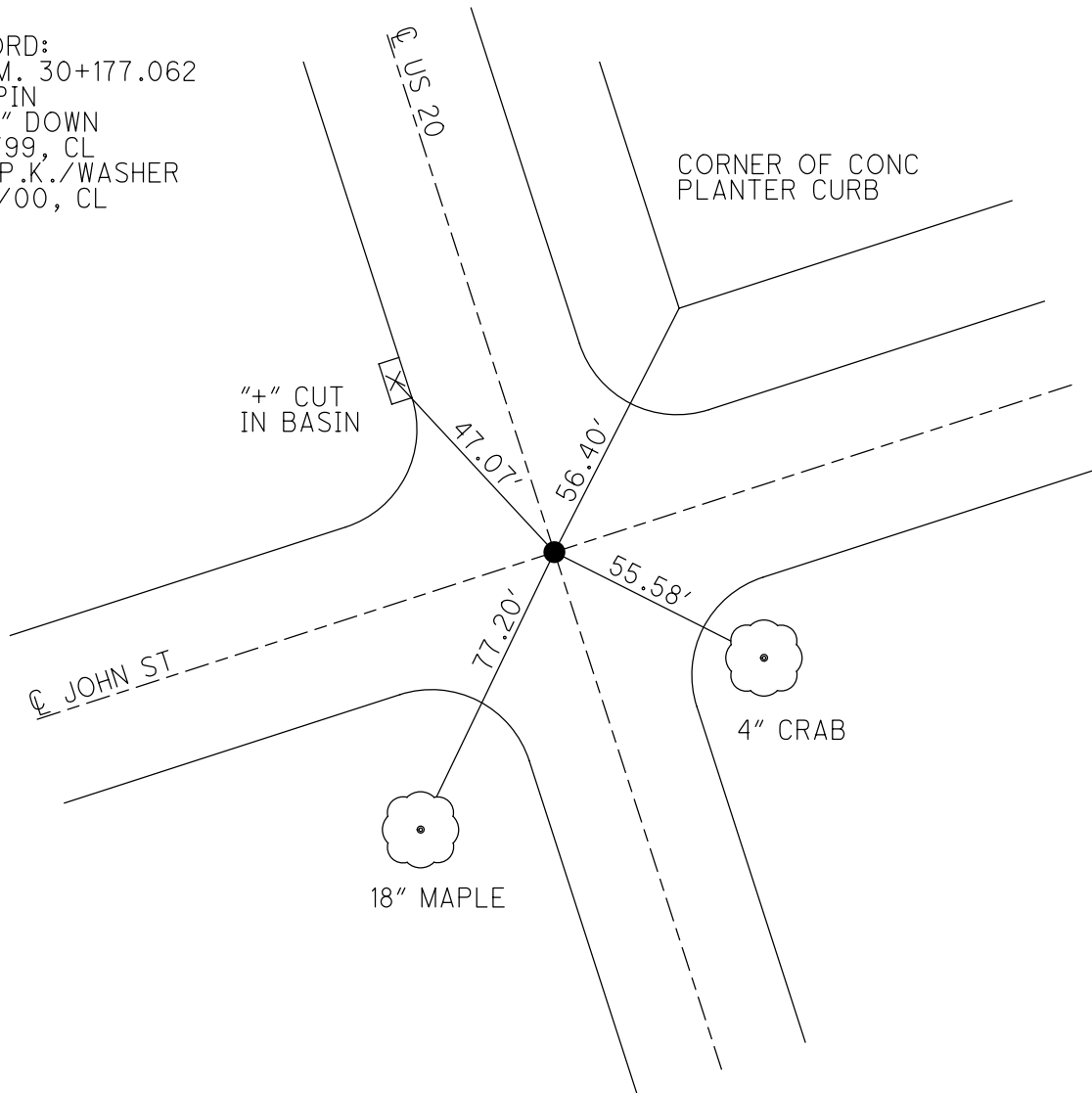
GEOID: _____

GRID: NORTHING: _____

EASTING: _____



RECORD:
S.L.M. 30+177.062
FD IPIN
1 1/2" DOWN
7/8/99, CL
SET P.K./WASHER
6/21/00, CL



O.D.O.T. DISTRICT 2 SURVEY OFFICE

PERSONNEL

REFERENCE NO. 95A

SHEET 3 OF 7

NOTES LOEHRKE

H.C. MOSEK

R.C. BLAKE

DATE 7-8-99

WEATHER Nice

TEMP. +70°

ROUTE U.S. 20

COUNTY LUCAS

TOWNSHIP _____

SECTION MAUMEE

T. _____ R. _____

TYPE MONUMENT I Pin

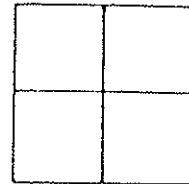
~~ON~~ SURFACE - BELOW 1 1/2"

~~LEFT~~ - ~~C~~ PAV'T. - RIGHT Yes

TO EDGE PAVEMENT

S.L.M. Project Sta 30+177.062

Set PK/washer
6-21-00
C.L.



Corner of Conc
Planter Curb
56.40'

Cross Cut on corner
of C.B. Curb Casting

John St

47.07'

55.58'

77.20'



Conant St

