

O.D.O.T. DISTRICT 2 SURVEY OFFICE (USE ONLY)

PERSONNEL

REFERENCE NO. 96

SHEET 51 OF 55

NOTES LOEHRKE

DATE 7/8/99

ROUTE US 20

H.C. MOSER

WEATHER NICE

COUNTY LUCAS

R.C. BLAKE

TEMP. 78°

TOWNSHIP 12 MILE RESERVE

DWG BY NIESE

PID _____

SECTION 1

T 1 US R E

TYPE MONUMENT IPIN

~~ON SURFACE~~ - BELOW 1 1/2"

OFFSET CL PAVEMENT ON LT : RT

- TO - EDGE PAVEMENT

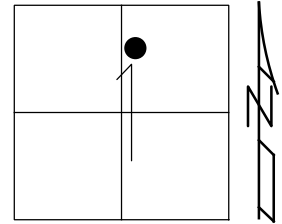
STATION: 993+69

HORZ. DATUM: _____

GEOID: _____

GRID: NORTHING: _____

EASTING: _____



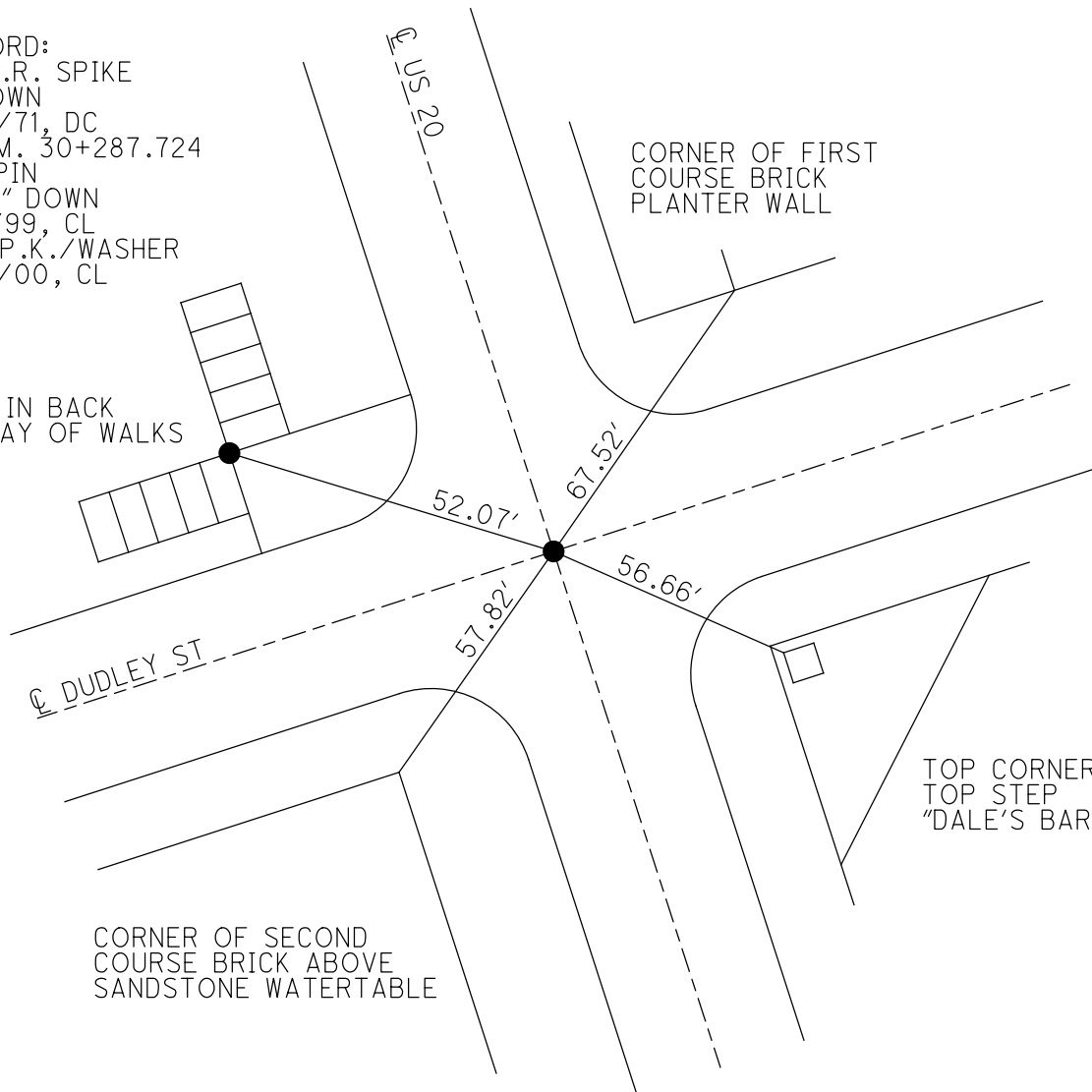
RECORD:
 FD R.R. SPIKE
 1" DOWN
 8/17/71, DC
 S.L.M. 30+287.724
 FD IPIN
 1 1/2" DOWN
 7/8/99, CL
 SET P.K./WASHER
 6/21/00, CL

NAIL IN BACK
 KEYWAY OF WALKS

CORNER OF FIRST
 COURSE BRICK
 PLANTER WALL

TOP CORNER TILE
 TOP STEP
 "DALE'S BAR"

CORNER OF SECOND
 COURSE BRICK ABOVE
 SANDSTONE WATERTABLE



O.D.O.T. DISTRICT 2 SURVEY OFFICE

PERSONNEL

REFERENCE NO. 96

SHEET 4 OF 7

NOTES LOEHRKE

H.C. MOSEER

DATE 7-8-99

ROUTE U.S. 20

R.C. Blake

WEATHER Nice

COUNTY Lucas

TEMP. ± 78°

TOWNSHIP _____

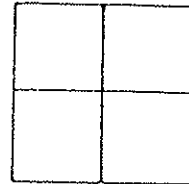
SECTION Maumee

T. _____ R. _____

TYPE MONUMENT I PIN

Set P.K./WASHER
6-21-00
C.L.

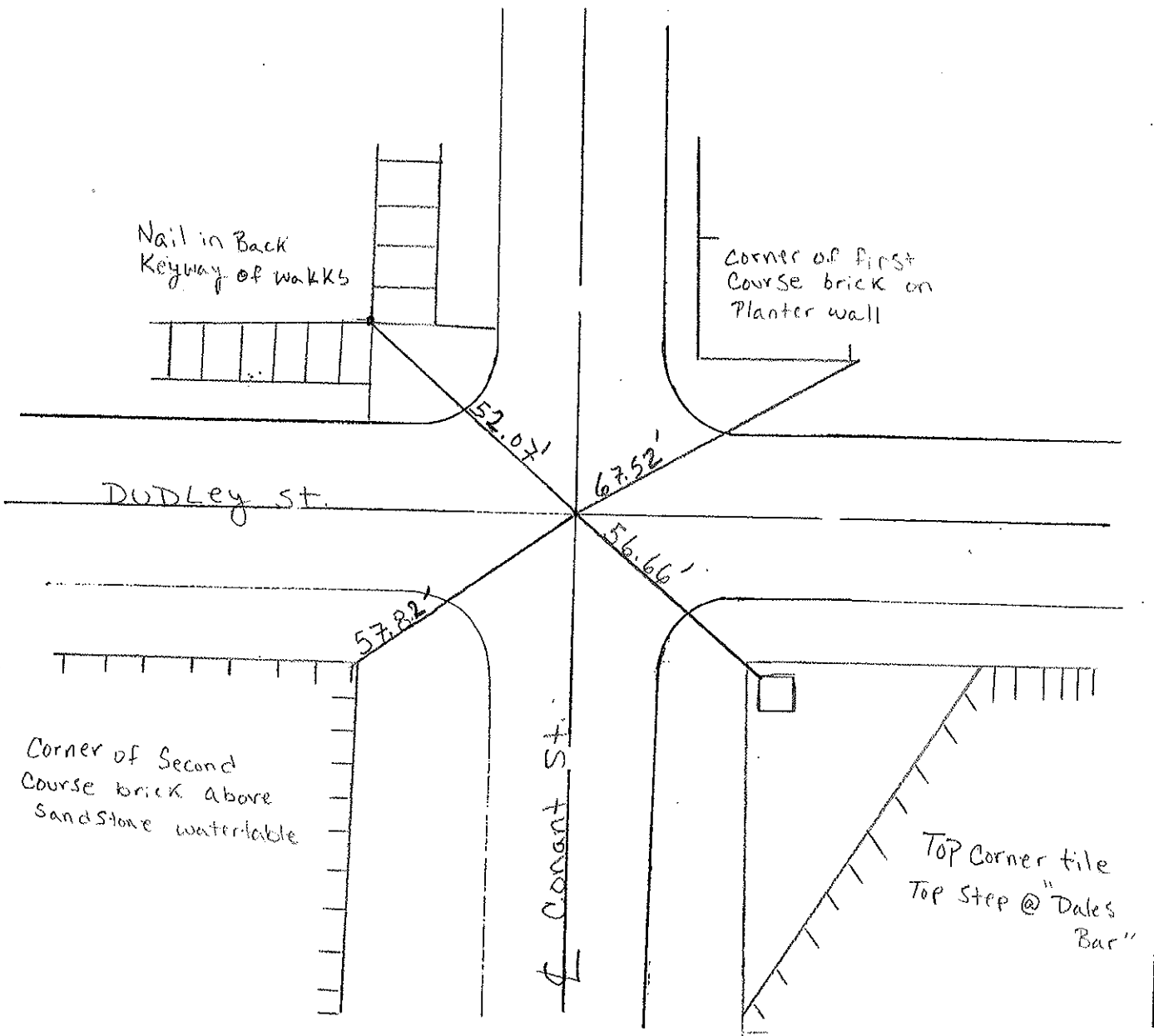
ON SURFACE - BELOW 1 1/2"



~~LEFT & PAV'T.~~ - ~~RIGHT~~ YES

TO _____ EDGE PAVEMENT

S.L.M. Project STA 30+287.724



PERSONNEL	TITLE	PERSONNEL	TITLE	COUNTY	DATE
D. CURTIS				LUCAS	17 AUG 71
D. STEVENS				S. R. U.S. 20	WEATHER CLOUDY
R. BRANNAN				SEC.	TEMP. 75 ±

DESCRIPTION	REFERENCES TO LEFT	TO CENTER LINE	POINTS RIGHT	JOB NO.
-------------	--------------------	----------------	--------------	---------

