

O.D.O.T. DISTRICT 2 SURVEY OFFICE (USE ONLY)

PERSONNEL

REFERENCE NO. 96 A

SHEET 52 OF 55

NOTES LOEHRKE DATE 7/8/99  
 H.C. MOSER WEATHER NICE  
 R.C. BLAKE TEMP. 78°

ROUTE US 20  
 COUNTY LUCAS  
 TOWNSHIP 12 MILE RESERVE  
 SECTION 1  
 T 1 US R E

DWG BY NIESE PID \_\_\_\_\_

TYPE MONUMENT P.K. NAIL

~~ON SURFACE~~ - BELOW 1 1/2"

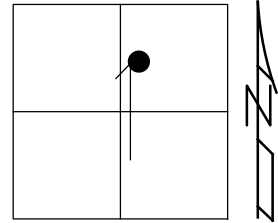
OFFSET  $\phi$  PAVEMENT ON LT : RT

- TO - EDGE PAVEMENT

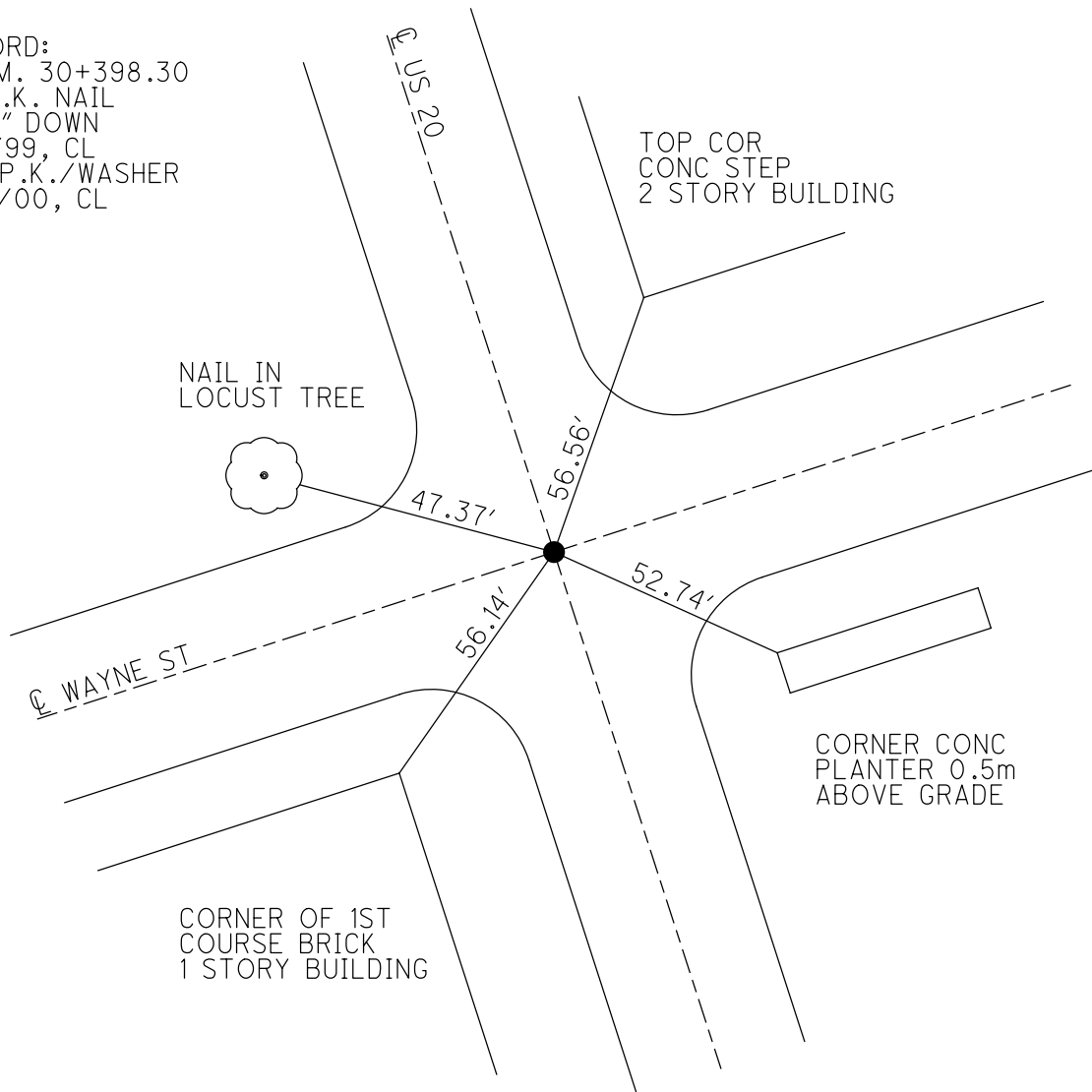
STATION: 997+32

HORZ. DATUM: \_\_\_\_\_ GEOID: \_\_\_\_\_

GRID: NORTHING: \_\_\_\_\_ EASTING: \_\_\_\_\_



RECORD:  
 S.L.M. 30+398.30  
 FD P.K. NAIL  
 1 1/2" DOWN  
 7/8/99, CL  
 SET P.K./WASHER  
 6/21/00, CL



O.D.O.T. DISTRICT 2 SURVEY OFFICE

PERSONNEL

REFERENCE NO. 96 A

SHEET 5 OF 7

NOTES LoEhrke

H.C. Mose R

R.C. Blake

DATE 7-8-99

WEATHER NICE

TEMP. ± 78°

ROUTE U.S. 20

COUNTY Lucas

TOWNSHIP \_\_\_\_\_

SECTION Mawmee

T \_\_\_\_\_ R \_\_\_\_\_

TYPE MONUMENT P.K. Nail

ON SURFACE - BELOW 1 1/2"

~~LEFT~~ & PAV'T. - RIGHT Yes

TO \_\_\_\_\_ EDGE PAVEMENT

S.L.M. Project Sta. 30+398.300

Set P.K./washer  
6-21-00  
C.L.

