

O.D.O.T. DISTRICT 2 SURVEY OFFICE (USE ONLY)

PERSONNEL

REFERENCE NO. 97

SHEET 53 OF 55

NOTES LOEHRKE

DATE 7/8/99

ROUTE US 20

H.C. MOSE

WEATHER NICE

COUNTY LUCAS

R.C. BLAKE

TEMP. 78°

TOWNSHIP 12 MILE RESERVE

DWG BY NIESE PID \_\_\_\_\_

SECTION 1

T 1 US R E

TYPE MONUMENT IPIN

~~ON SURFACE~~ - BELOW 1 1/2"

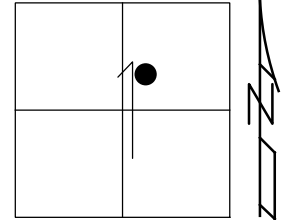
OFFSET ☉ PAVEMENT ON LT : RT

- TO - EDGE PAVEMENT

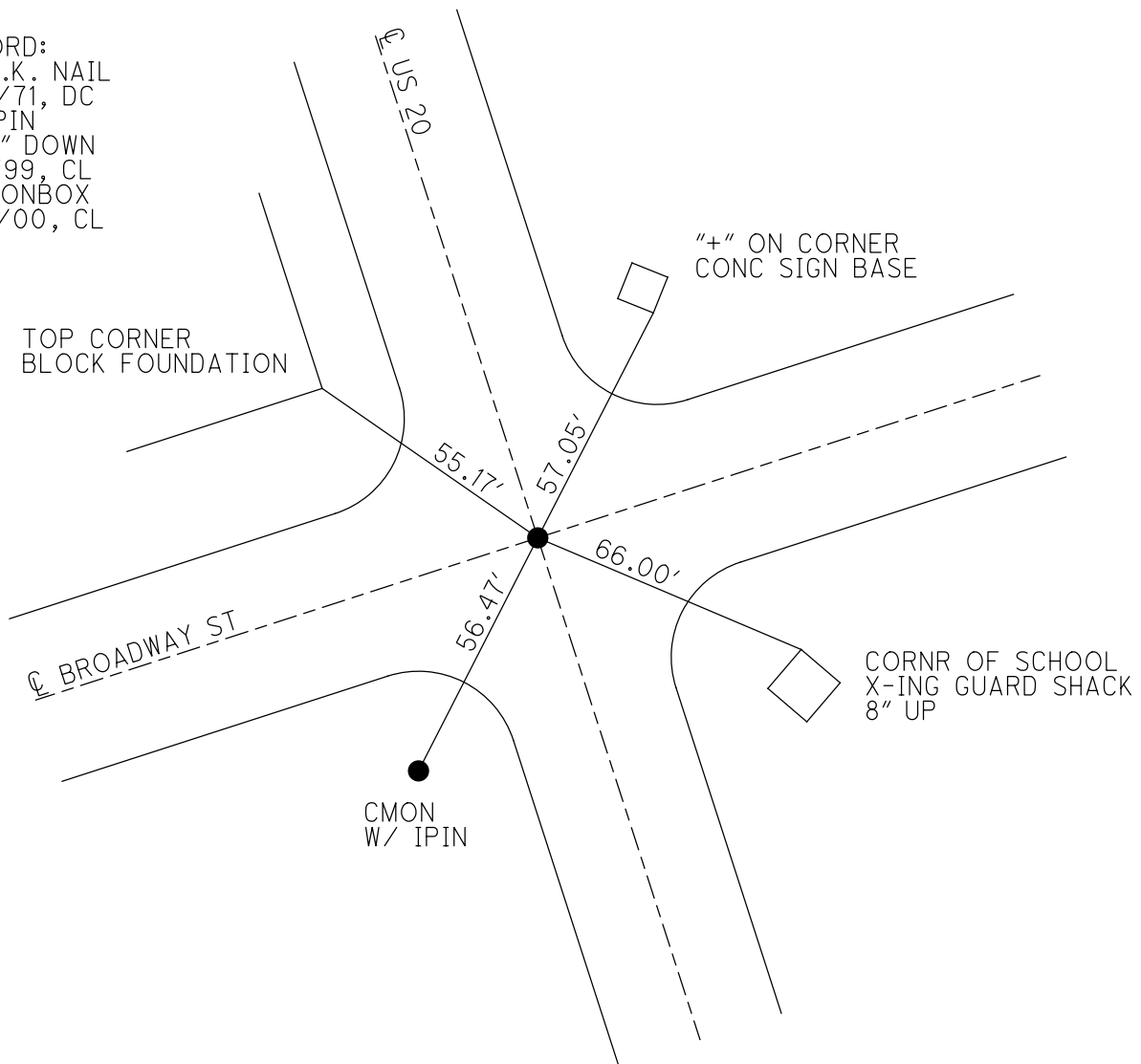
STATION: 1000+95

HORZ. DATUM: \_\_\_\_\_ GEOID: \_\_\_\_\_

GRID: NORTHING: \_\_\_\_\_ EASTING: \_\_\_\_\_



RECORD:  
FD P.K. NAIL  
8/17/71, DC  
FD IPIN  
1 1/2" DOWN  
7/8/99, CL  
FD MONBOX  
6/21/00, CL



# O.D.O.T. DISTRICT 2 SURVEY OFFICE

PERSONNEL

REFERENCE NO. 97

SHEET 6 OF 7

NOTES Loehrke

H.C. Moser

R.C. Blake

DATE 7-8-99

WEATHER Nice

TEMP. ± 78'

ROUTE U.S. 20

COUNTY Lucas

TOWNSHIP \_\_\_\_\_

SECTION Mayme

T. \_\_\_\_\_ R. \_\_\_\_\_

TYPE MONUMENT F Pin

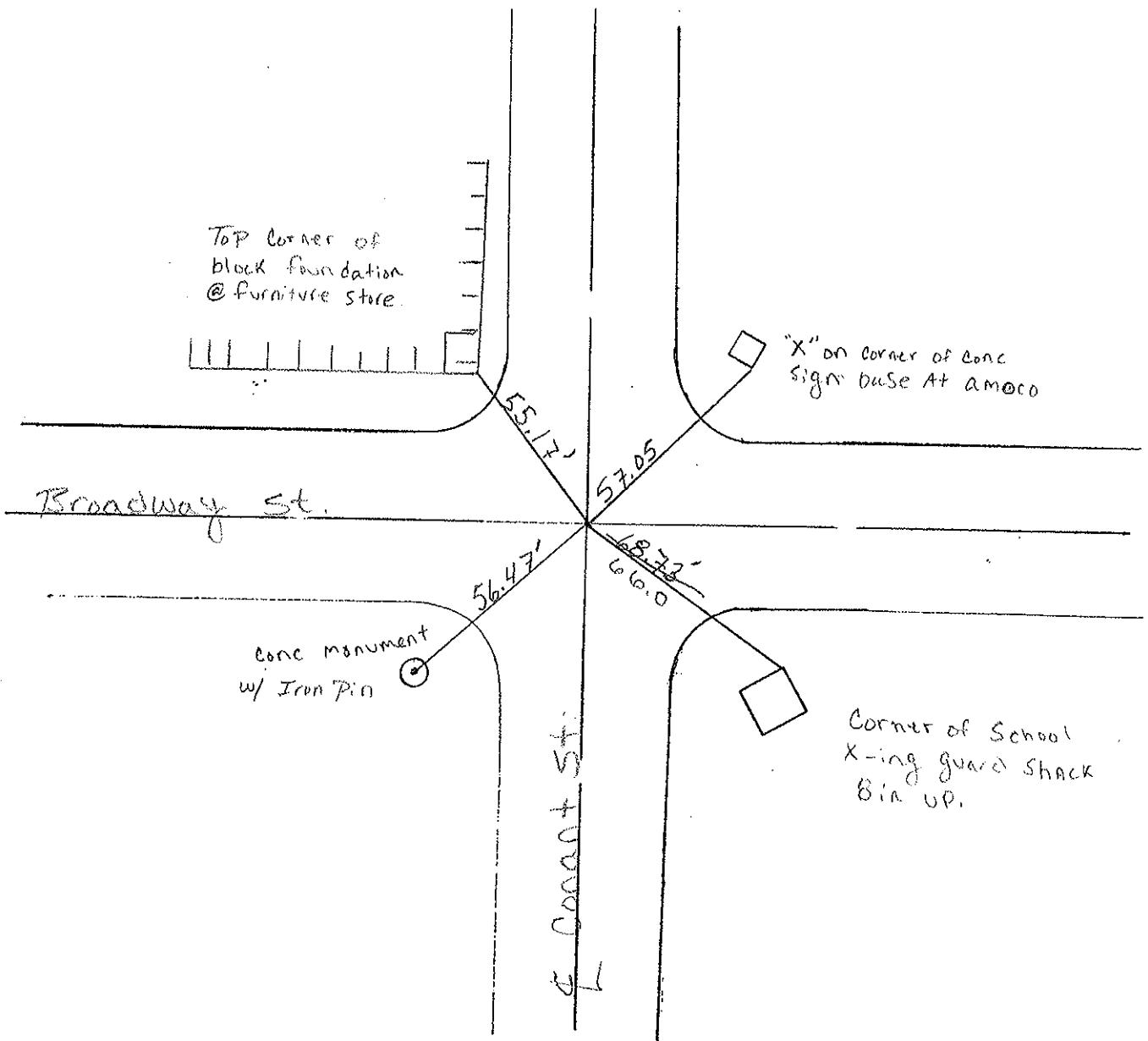
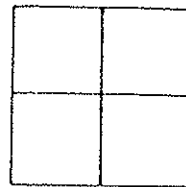
ON SURFACE - BELOW 1 1/2"

~~LEFT~~ - & PAV'T. - ~~RIGHT~~ - yes

TO EDGE PAVEMENT

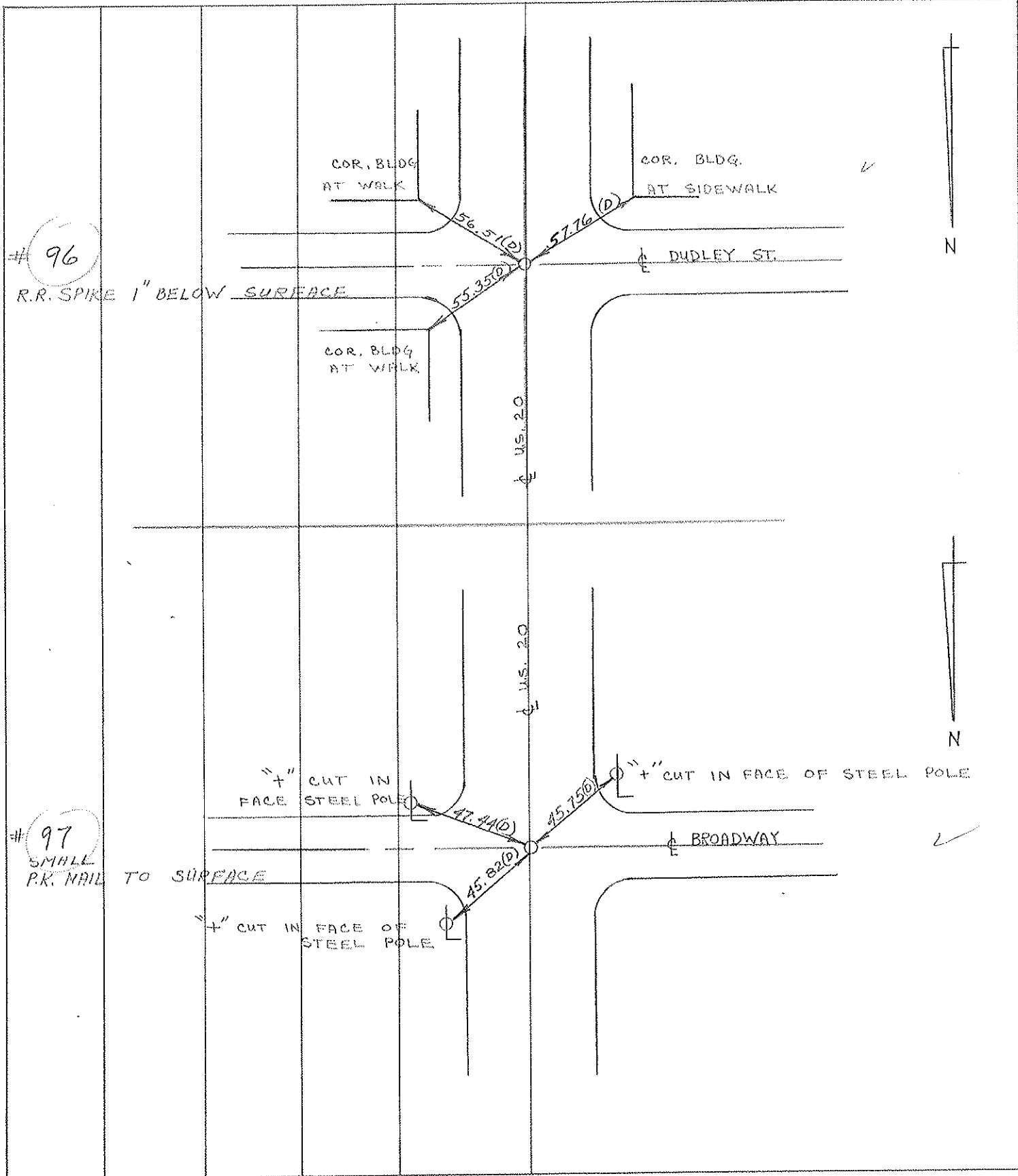
S.L.M. Project STA. 30+508.807

Fd. monument  
Box  
6-21-00  
C.C.



PERSONNEL	TITLE	PERSONNEL	TITLE	COUNTY	DATE
D. CURTIS				LUCAS	17 AUG 71
D. STEVENS				S. R. U.S. 20	WEATHER CLOUDY
R. BRANNAN				SEC.	TEMP. 75 ±

DESCRIPTION	REFERENCES TO LEFT	TO CENTER LINE	POINTS RIGHT	JOB NO.
-------------	--------------------	----------------	--------------	---------



Personnel

Title

Date 8-1-55  
(monit)

County

Sheet No. 2/3

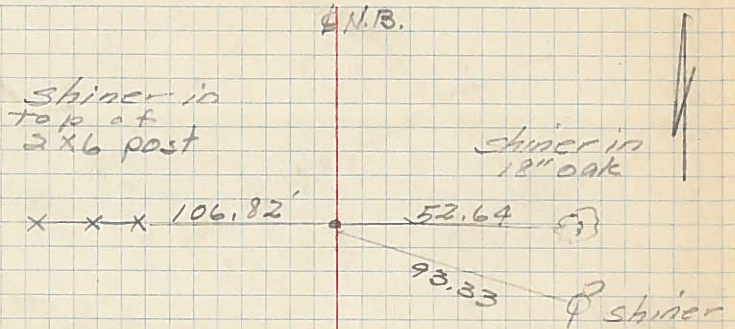
Weather

S. R. No.

Section

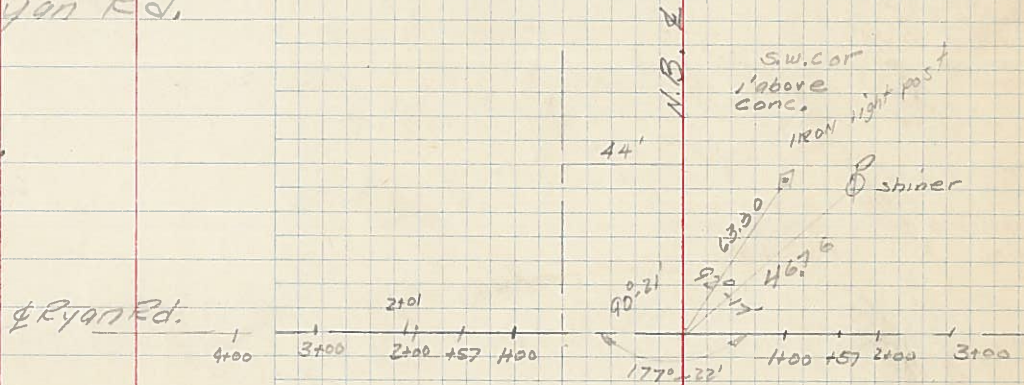
Job No. 02103

Δ @ 817+15.35  
Δ = 0°-28' Lt  
Brass plate



P.I. - N.B. and Ryan Rd.  
(E. Sun)

843+89.95  
Δ = 0°-17' Rt.



P.I. @ Survey and Heather downs

870+55.54  
Δ = 0°-20' Rt.  
Brass Plate

