

O.D.O.T. DISTRICT 2 SURVEY OFFICE (USE ONLY)

PERSONNEL

REFERENCE NO. 98

SHEET 54 OF 55

NOTES LOEHRKE

DATE 7/8/99

ROUTE US 20

H.C. MOSER

WEATHER NICE

COUNTY LUCAS

R.C. BLAKE

TEMP. 78°

TOWNSHIP 12 MILE RESERVE

DWG BY NIESE PID \_\_\_\_\_

SECTION 1

T 1 US R E

TYPE MONUMENT CONCRETE NAIL

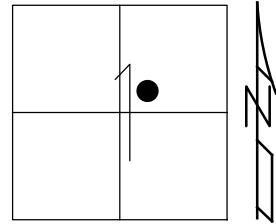
ON SURFACE - ~~BELOW~~ ON \_\_\_\_\_

OFFSET  $\odot$  PAVEMENT ON \_\_\_\_\_ LT : RT  
- TO - EDGE PAVEMENT

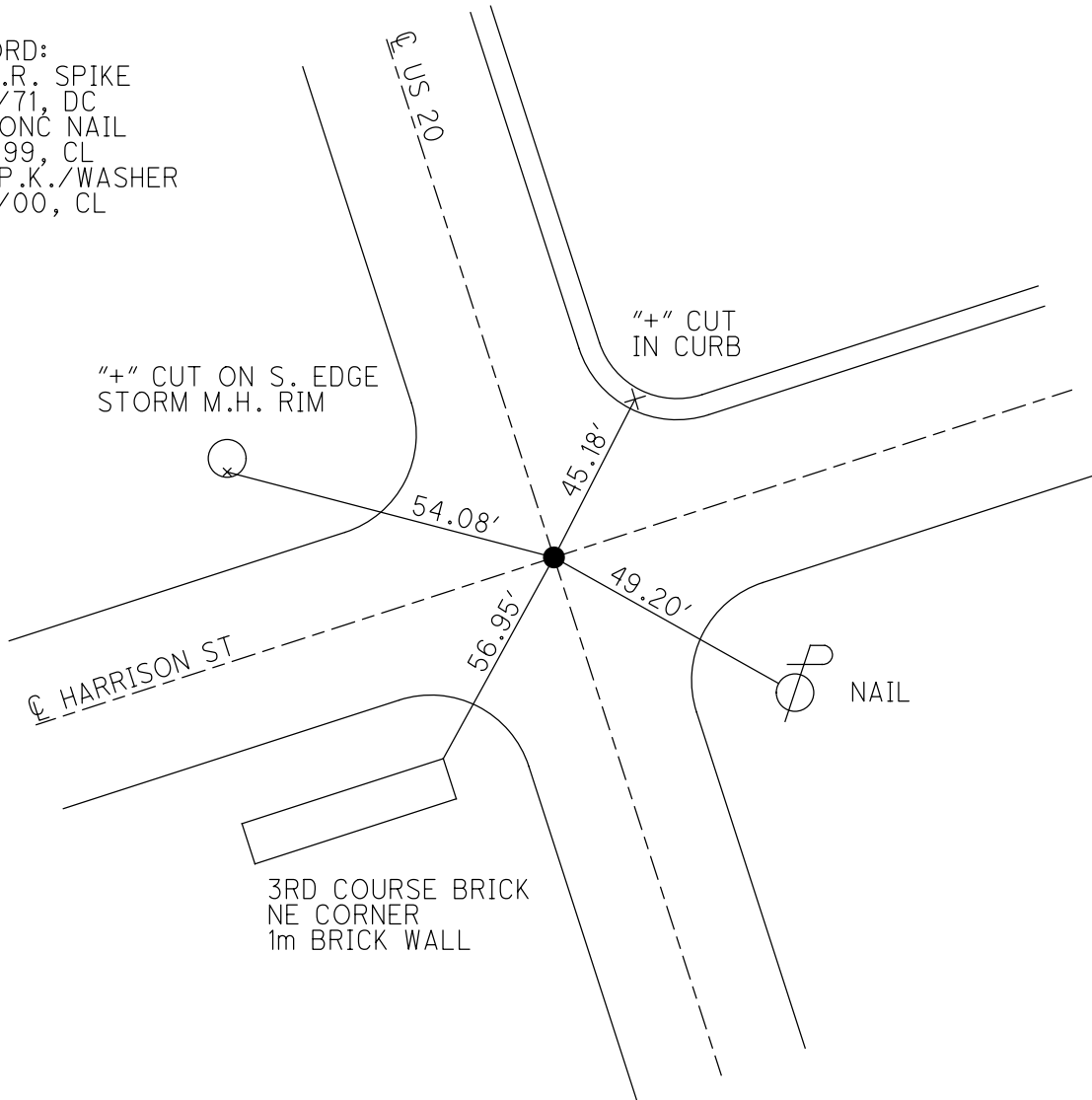
STATION: 1004+56

HORIZ.DATUM: \_\_\_\_\_ GEOID: \_\_\_\_\_

GRID: NORTHING: \_\_\_\_\_ EASTING: \_\_\_\_\_



RECORD:  
FD R.R. SPIKE  
8/17/71, DC  
FD CONC NAIL  
7/8/99, CL  
SET P.K./WASHER  
6/21/00, CL



O.D.O.T. DISTRICT 2 SURVEY OFFICE

PERSONNEL

REFERENCE NO. 98

SHEET 7 OF 7

NOTES Loehrke

H.C. Moser

R.C. Blake

DATE 7-8-99

WEATHER Nice

TEMP. ± 78°

ROUTE U.S. 20

COUNTY Lucas

TOWNSHIP \_\_\_\_\_

SECTION Maumee

T \_\_\_\_\_ R \_\_\_\_\_

TYPE MONUMENT Conc. Nail

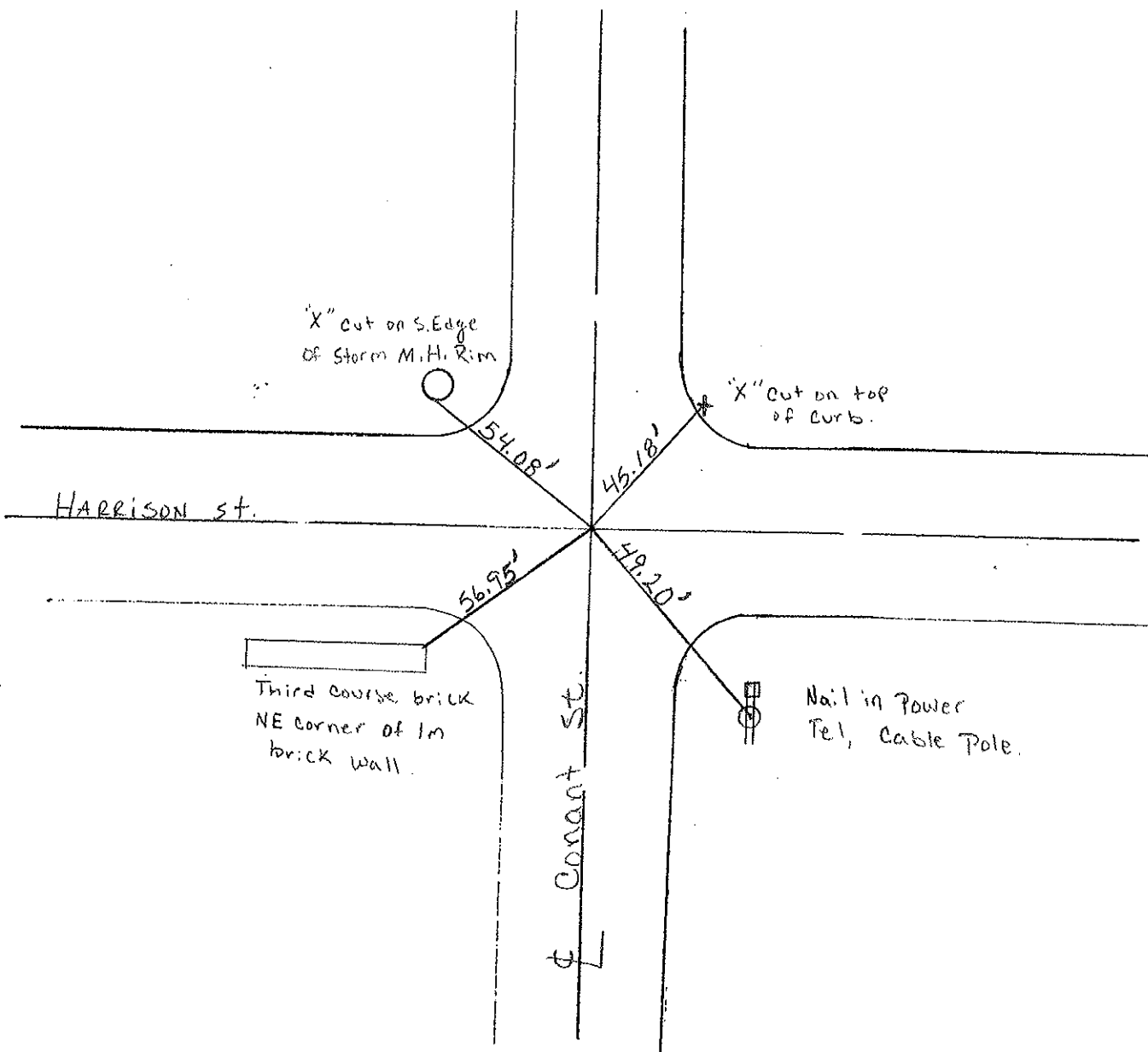
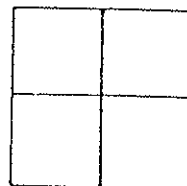
ON SURFACE - BELOW \_\_\_\_\_

~~LEFT~~ - ~~C~~ PAV'T. - ~~RIGHT~~ yes

TO \_\_\_\_\_ EDGE PAVEMENT

S.L.M. Project Sta 30+618.989

Set P.C./washer  
6-21-00  
C.C.



PERSONNEL	TITLE	PERSONNEL	TITLE
<u>D. CURTIS</u>			
<u>P. STEVENS</u>			
<u>R. BRANNAN</u>			

COUNTY LUCAS DATE 17 AUG 71  
 S. R. U.S. 20 WEATHER CLOUDY  
 SEC. \_\_\_\_\_ TEMP. 80±

DESCRIPTION REFERENCES TO CONTROL POINTS JOB NO. \_\_\_\_\_  
 LEFT CENTER LINE RIGHT

