

(TOP) TYPE 404 THICKNESS \_\_\_\_\_ PRIORITY \_\_\_\_\_

(BASE) TYPE \_\_\_\_\_ THICKNESS \_\_\_\_\_ PENETRATION \_\_\_\_\_

END LOG S.L.M. 17.09 ( Conant St. Intersection <sup>Calc. 902+35 - meas. 902+30</sup> )

BEGIN LOG S.L.M. 14.45 ( Meet prev. joint <sup>Calc. 763+00 - used</sup> )

TOTAL LENGTH 2.64 mi.

COUNTY Lucas SECTION 14.45 WIDTH (2024)' BERM CURBED ( ) ( )

ROUTE US 24 SECTION 14.99 WIDTH (61)' ( ) ( )

SECTION 17.09 WIDTH ( ) ( )

ORDINANCE Moumpe SECTION \_\_\_\_\_ WIDTH ( ) ( )

END LOG 17.09 SECTION \_\_\_\_\_ WIDTH ( ) ( )

BEGIN LOG 15.92 SECTION \_\_\_\_\_ WIDTH ( ) ( )

EXISTING BERM TYPE Stop. EXISTING BERM WIDTH 8'-0" MAILBOX APPROACHES No. \_\_\_\_\_

(PAVED, STABILIZED, AGGREGATE)

MANHOLES \_\_\_\_\_

PROPOSED BERM TYPE 404 PROPOSED BERM WIDTH 8' X 2" INLETS CATCH BASINS \_\_\_\_\_

INTERSECTIONS \_\_\_\_\_ ASPHALT DRIVEWAYS \_\_\_\_\_ CONCRETE DRIVEWAYS \_\_\_\_\_

STRUCTURES

RAILROAD CROSSINGS

STRUCTURE NO.	WIDTH	LENGTH	APPR. SLABS
<u>Luc 24-15.28</u>	<u>88</u>	<u>296</u>	<u>2 @ 25</u>

NAME R. R.	STATION	( * ) ( )	No. TRACKS
		( ) ( )	TRACKS
		( ) ( )	TRACKS
		( ) ( )	TRACKS
		( ) ( )	TRACKS
		( ) ( )	TRACKS

\*Indicate length of crossing along C Pav't.

NOTES

ck. Notes on Drawings of Ramps!

PERSONNEL TITLE PERSONNEL TITLE COUNTY LUCAS DATE 8-10-81  
 NoFFmax \_\_\_\_\_ S. R. U.S. 24 WEATHER clear  
 Householder \_\_\_\_\_ SEC. Lerome - Contact TEMP. +80°  
 Loehrke \_\_\_\_\_

DESCRIPTION LEFT CENTER LINE RIGHT JOB NO.

STATION	OUT Rt-Lt	CB	TYPE 1,2,3	MH	TYPE San. Storm	MONU	TYPE Box Other	WV	CASTING		Remarks
									Raise	Feather	
843+50	Rt	✓	6							✓	CONC. AROUND the
"	Lt	✓	6							✓	INLETS
843+47									✓		"ADALET" steel boxes
842+71									✓		traffic control?
869+41	Lt	✓	6						✓		Level on dust
869+45	Rt	✓	6						✓		Below Pavt. surface
872+17	Lt				✓ storm				✓		
872+66	Rt	✓	6						✓		
876+44	Lt	✓	3-A							✓	IN CONC curb-gutter
876+49	Lt				✓ storm				✓		
878+90	Lt	✓	3-A							✓	IN CONC curb-gutter
878+91	Lt				✓ storm				✓		
881+28	Lt	✓	3-A							✓	IN CONC curb-gutter
881+28	Lt				✓ storm				✓		
883+41	Lt	✓	3-A							✓	IN CONC - curb-gutter
883+41	Lt				✓ storm				✓		
886+16	Lt	✓	3-A							✓	IN curb-on Kingsbury
886+39	Lt				✓ storm				✓		
886+64	Lt	✓	3-A							✓	IN curb-on Kingsbury
891+09	Lt	✓	3-A							✓	IN curb-gutter
891+11	Lt				✓ storm				✓		
894+91	Lt	✓	3-A							✓	IN curb-gutter
894+91	Lt				✓ storm				✓		
895+41	Rt	✓	6							✓	Level/Pavt
896+16	Lt	✓	3-A							✓	IN curb-gutter
896+17	Lt				✓ storm				✓		
896+55	Rt	✓	6							✓	Level/Pavt
896+55	Lt	✓	3-A							✓	IN curb-gutter
899+91	Lt				✓ storm				✓		
901+38	Lt	✓	3-A							✓	IN curb-gutter
901+41	Rt	✓	3-A							✓	IN curb-gutter
902+00	Lt				✓ storm				✓		
902+00	Lt				✓ storm				✓		

PERSONNEL TITLE PERSONNEL TITLE

COUNTY LUCAS

DATE 8-3-81

Hoffman

Householder

Loehrke

S. R. U.S. 24

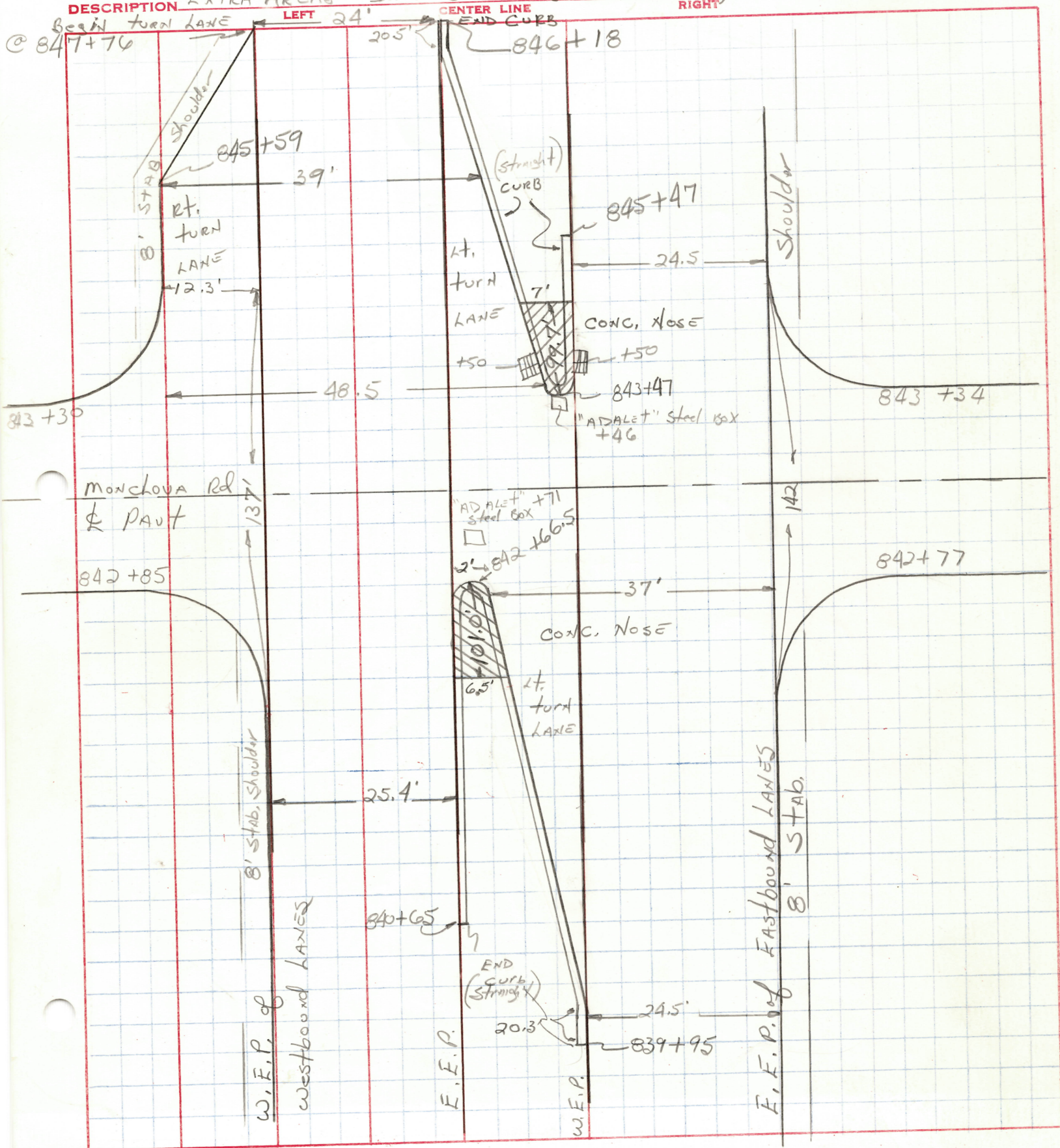
WEATHER RAIN

SEC. brone - CONTRACT

TEMP. +72°

DESCRIPTION EXTRA AREAS - INTERSECTIONS (Monclova Rd)

JOB NO.



PERSONNEL TITLE PERSONNEL TITLE  
 Hoffman \_\_\_\_\_  
 Householder \_\_\_\_\_  
 Loehrke \_\_\_\_\_

COUNTY LUCAS

DATE 8-3-81

S. R. U.S. 24

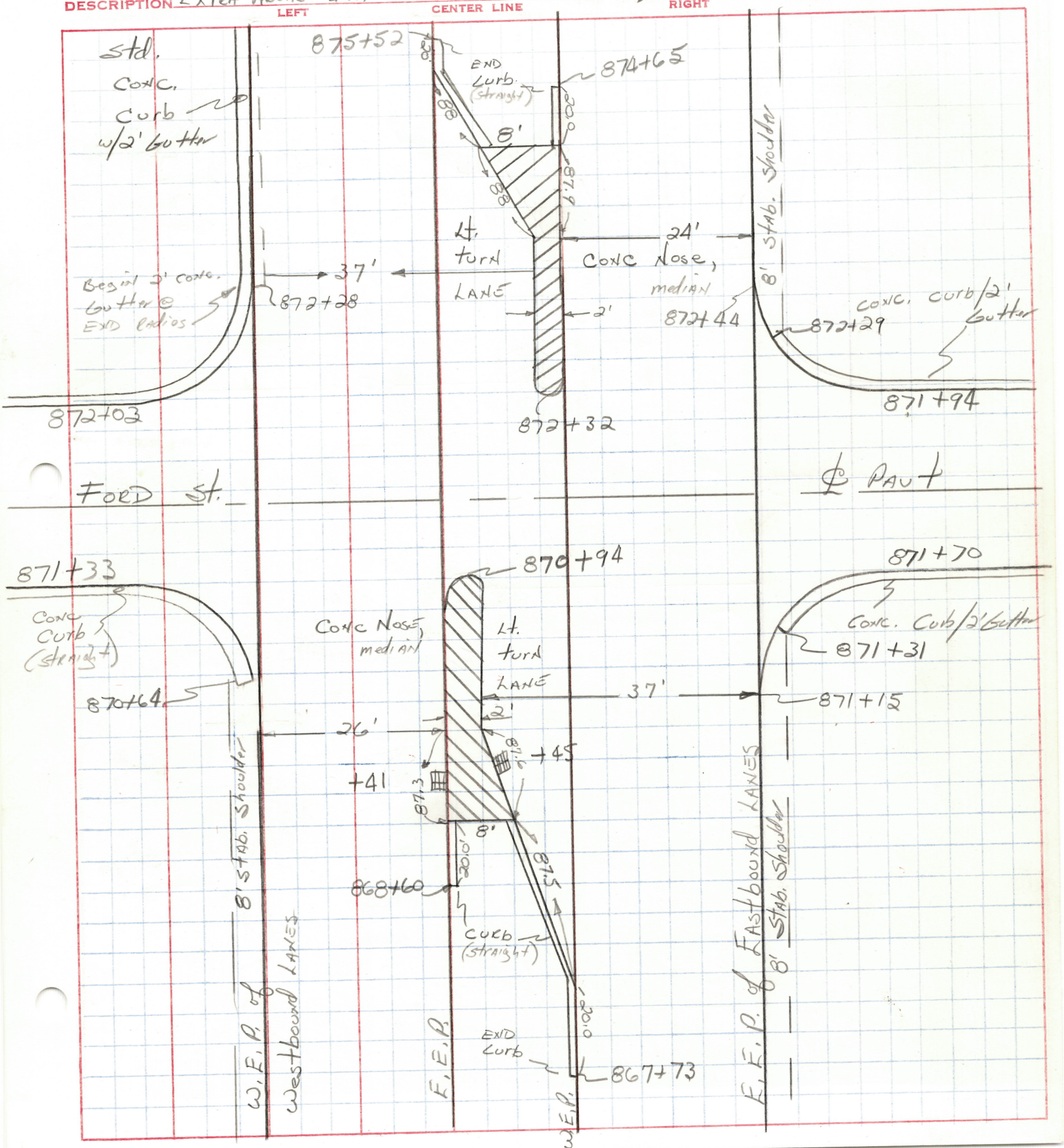
WEATHER RAIN

SEC. Jerome - Conant

TEMP. +75°

DESCRIPTION Extra Areas - Intersections - (Ford St.)

JOB NO. \_\_\_\_\_

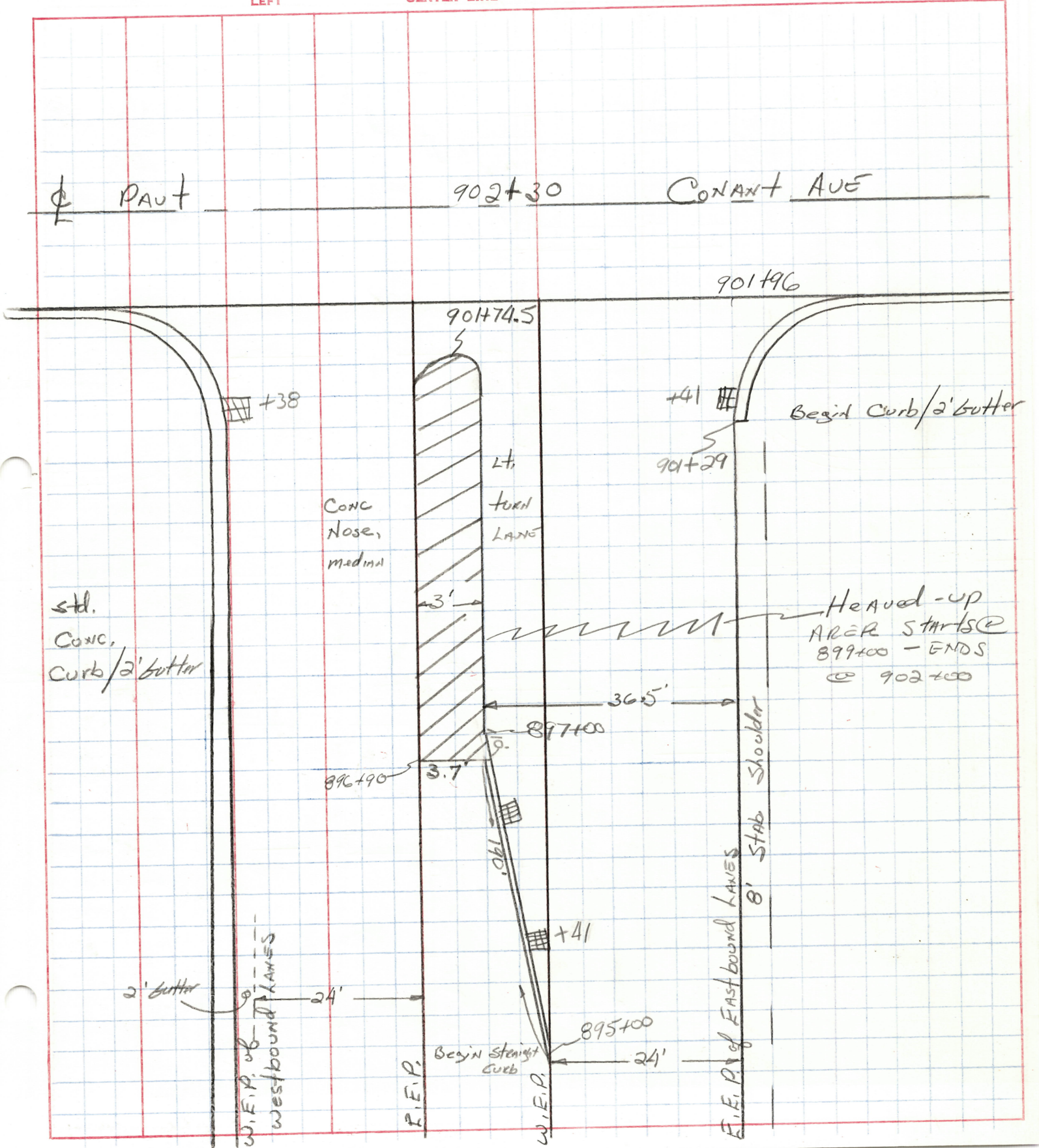




PERSONNEL	TITLE	PERSONNEL	TITLE
Hoffman			
Householder			
Loehrke			

COUNTY LUCAS DATE 8-4-81  
 S. R. d.s. 24 WEATHER Fog  
 SEC. Jerome-Conant TEMP. +75°

DESCRIPTION EXTRA AREAS - INTERSECTIONS (CONANT AVE.) JOB NO. \_\_\_\_\_



US 24 (SLM 14.45 to SLM 17.09 Conant St.)

✓ ① Need Cross Sections at 25' intervals throughout curb limits at all ramp locations carrying some 25' beyond End of Curb.

✓ ② Need location & length of Guardrail  
 outside East of Jerome Rd. with 12'-6" post spacing and any other locations where  
 or just in median Guardrail post spacing is 12'-6"  
 in median @ R. END of Bridge & Entrance Ramp 24 EB to 424 EB is 6'-3" cks.

✓ ③ Need life line locations for C & Lt. & Rt. edges if any exist. **NONE**

✓ ④ Need limits of Curb & Gutter Areas.

✓ ⑤ Need shoulder widths.

✓ ⑥ Need all extra areas

✓ ⑦ Need approximate length of rutted pavement from beginning of project to some point East of I.R. 475  
 850+00

✓ ⑧ Need length & cross sectional view of hooved up area at Conant St. Intersection.

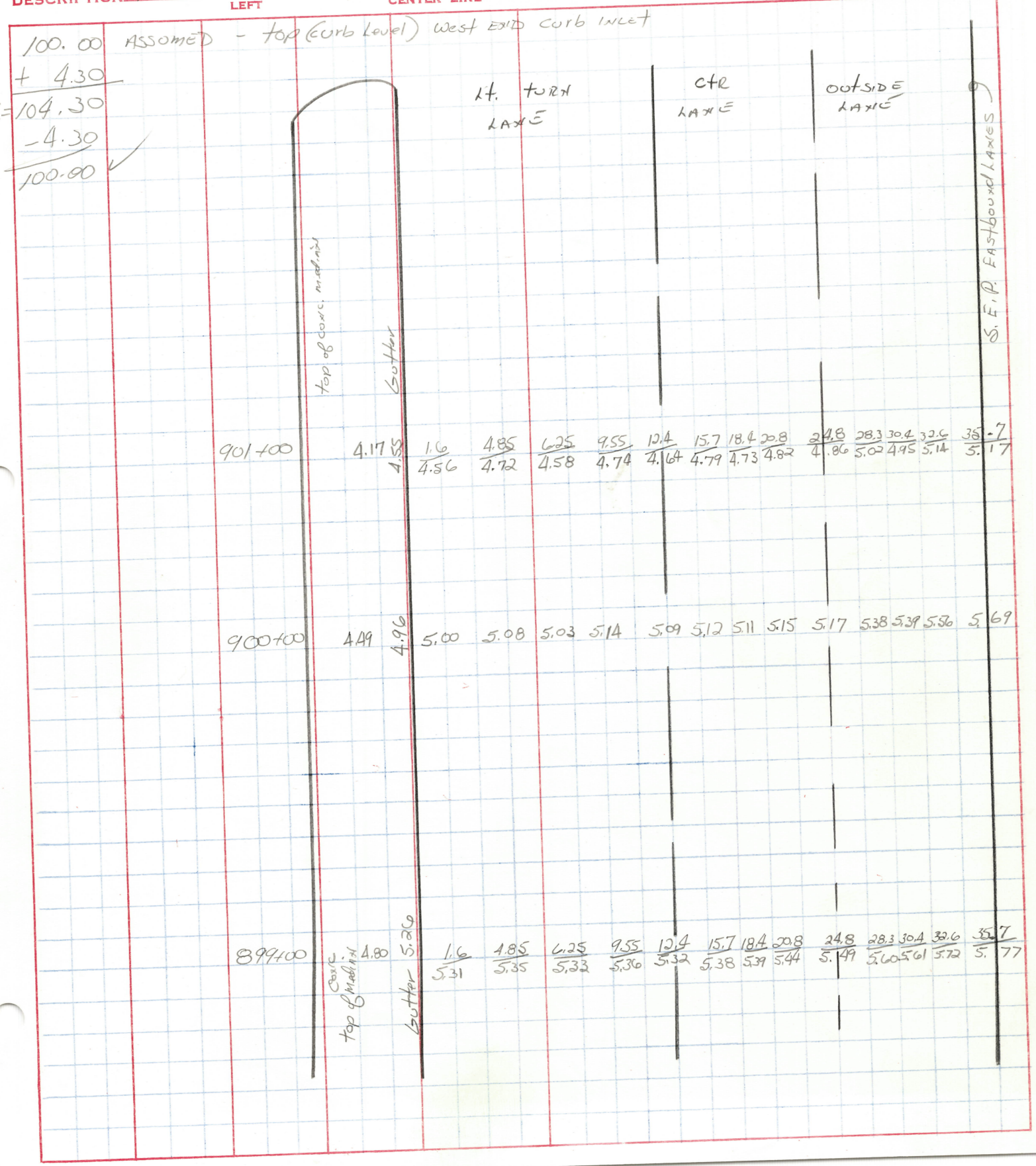
901+16

902+30

PERSONNEL TITLE PERSONNEL TITLE COUNTY LUCAS DATE 8-10-81  
 HOFFMAN \_\_\_\_\_  
 Householder \_\_\_\_\_ S. R. U.S. 24 WEATHER clear  
 Loehrke \_\_\_\_\_ SEC. Lerome - COXANT TEMP. +80°

DESCRIPTION X-Section Heaved-up AREA - F.B. 24 @ COXANT JOB NO. \_\_\_\_\_  
 LEFT CENTER LINE RIGHT

100.00 ASSUMED - top (Curb Level) West END curb inlet  
 + 4.30  
 H.I. = 104.30  
 - 4.30  
 100.00 ✓



PERSONNEL	TITLE	PERSONNEL	TITLE
Hoffman			
Houssholder			
Loehke			

COUNTY LUCAS DATE 8-10-81

S. R. U.S. 24 WEATHER \_\_\_\_\_

SEC. Jerome - Contact TEMP. \_\_\_\_\_

DESCRIPTION Misc. JOB NO. \_\_\_\_\_

LEFT	CENTER LINE	RIGHT
<p>Guard RAIL 12'-6" spacing</p> <p>Starts @ STA. 780+15, N. SIDE of W. Bound LANES then East 103' in length, on W. Bound LANES</p>		
E. B. LANES	start @ 763+00	- existing joint
W. B. LANES	start @ 762+56	- existing joint
E. B. & W. B. LANES	STA. 798+63 to 799+18	PAVT IS BAD - SUNKEN - OVER DRAINAGE CONC. PIPE
<p>Rotted PAVEMENT from start of project, 763+00 to ± 850+00</p> <p>I would suggest that someone else check this also, now that sta. is painted.</p>		

PERSONNEL TITLE PERSONNEL TITLE COUNTY LUCAS DATE 8-11-81  
 HOFFMAN \_\_\_\_\_  
 Householder \_\_\_\_\_  
 Loehrke \_\_\_\_\_  
 S. R. U.S. 24 WEATHER P. Cloudy  
 SEC. Jerome - Constant TEMP. + 70°

DESCRIPTION X-Sections of curb AREAS - 24 F'475 RAMP "H" JOB NO. \_\_\_\_\_  
 LEFT CENTER LINE RIGHT

STA	+	+	-	FEU.				
T.B.M.#1	1.72	101.73		100.00	ASSUMED - TOP of S. E. Bolt, EAST			
T.P.	3.04	97.52	7.25	94.48	END Guard Rail - STA. 800+20, Rt.			
T.P.	3.90	96.89	4.53	92.99				
792+25		2.97						RAMP E.P. 3.31 21.4
S.F.P. of E.O.L. U.S. 24			Gutter				Gutter	
+33	3.01	3.25	3.19	16.7			3.44	3.38
		14.3	TOP CONC. & NOSE				19.2	22.2
+50	3.00	3.19	2.75	14.2			TOP CURB 2.76	3.41
			TOP CURB				20.2	24.4
+75	3.07	3.21	2.75	13.1			2.84	3.43
							23.9	28.0
793+00	3.21	3.28	2.76	11.9	3.0		3.01	3.54
					20		27.7	31.6
+25	3.22	3.32	2.86	11.0	3.4		3.12	3.63
					20		32	36.0
+35	END CURB	3.24	3.39	2.88	3.5	3.8	3.17	3.71
				10.3	17	22	33.0	37.0
+50		3.28	3.64	3.6	4.4	4.2	EDGE BERM ? 3.90	3.96
			9.6	13	22	32	37	40.0
+75	3.41	3.75	4.1	5.1	5.4	4.9	4.14	4.23
		9.7	15	22	26	33	41	45

PERSONNEL TITLE PERSONNEL TITLE COUNTY Lucas DATE 8-11-81  
Hoffman \_\_\_\_\_ U.S. 24 WEATHER P. Cloudy  
Houssholder \_\_\_\_\_ SEC. Jerome - Cox TEMP. +70°  
Loehke \_\_\_\_\_

DESCRIPTION X-sections of Curb Areas - 24' 4 1/2" Ramp "H" JOB NO. \_\_\_\_\_

STA	+	LEFT	CENTER LINE	RIGHT	Edge Berm	RAMP E.A.			
		96.89							
		Edge Berm							
794+00	3.45	$\frac{3.92}{10.0}$	$\frac{4.1}{14}$	$\frac{5.6}{21}$	$\frac{6.8}{28}$	$\frac{5.7}{35}$	$\frac{5.0}{40}$	$\frac{4.41}{47}$	$\frac{4.52}{50}$
S.E.P. of E.B. of U.S. 24									
+25	3.53	$\frac{3.96}{9.5}$	$\frac{4.7}{16}$	$\frac{7.6}{29}$	$\frac{7.6}{34}$	$\frac{5.3}{46}$	$\frac{4.9}{51}$	$\frac{4.82}{53}$	$\frac{4.92}{56}$
T.P.	4.50	97.49	3.90	92.99					
T.P.	7.19	101.67	3.01	94.48					
T.B.M. #1			1.66	100.01					✓ O.K.



PERSONNEL TITLE PERSONNEL TITLE COUNTY LUCAS DATE 8-11-81  
 HoFFman \_\_\_\_\_  
 Householder \_\_\_\_\_ S. R. U.S. 24 WEATHER P. Cloudy  
 Koehrke \_\_\_\_\_ SEC. Lerome - Conant TEMP. +70°

DESCRIPTION X-Sections of Curb Areas - 24' 475- Ramp "D" JOB NO. \_\_\_\_\_  
 LEFT CENTER LINE RIGHT

STA	+	π	-	Elev						Gutter	T.C.	Gutter	RAMP E.P.
		103.02											
		Edge of Berm											
800+75	1.91	$\frac{2.20}{8}$	$\frac{2.5}{13}$	$\frac{3.1}{17}$	$\frac{4.5}{24}$	$\frac{4.2}{30}$	$\frac{3.6}{35}$	$\frac{2.6}{41}$	2.6	$\frac{2.46}{46.0}$	3.14	$\frac{3.45}{50}$	
801+00	1.60	$\frac{1.90}{8}$	$\frac{2.1}{13}$	$\frac{2.6}{16}$	$\frac{2.8}{21}$	$\frac{2.3}{26}$	$\frac{1.9}{30}$		2.0	$\frac{1.79}{34.2}$	2.43	$\frac{2.61}{38}$	
+25	1.32	$\frac{1.71}{8}$	$\frac{1.8}{13}$	$\frac{1.9}{16}$	$\frac{1.5}{21}$				1.4	$\frac{1.39}{25.5}$	2.05	$\frac{2.28}{29.5}$	
+50	1.00	$\frac{1.38}{8}$	$\frac{1.5}{13}$						1.4	$\frac{0.87}{18.2}$	1.52	$\frac{1.77}{20.5}$	
+75	0.68	$\frac{0.94}{8}$							0.95	$\frac{0.43}{13.0}$	1.05	$\frac{1.20}{16.6}$	
+90	0.48								0.6	$\frac{0.11}{10.2}$	0.80	$\frac{0.90}{13.2}$	
END Curb													

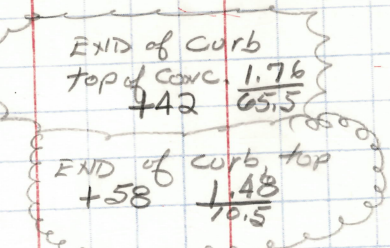
U.S. 24  
 F.B.I.  
 F.P. of  
 S. F.P. of

PERSONNEL TITLE PERSONNEL TITLE COUNTY LUCAS DATE 8-17-81  
 HoFFman \_\_\_\_\_  
 Householder \_\_\_\_\_ S. R. U.S. 24 WEATHER Clear  
 Loehrle \_\_\_\_\_ SEC. Lerome-Corant TEMP. +60°

DESCRIPTION X-Section of Curb Areas - U.S. 24 & I-475-Ramp 'A' JOB NO. \_\_\_\_\_

STA	+	π	-	ELEV.	LEFT	CENTER LINE	RIGHT	
T.B.M.#1	10.90	110.90		100.00				top of S.E. Curb, EAST END Board
T.P.	4.89	110.24	5.55	105.35				RAIL - STA 800+20; RT.
T.B.M.#2			7.01	103.23				top of S.W. Curb, WEST END Board
								RAIL - STA 812+60, RT.
811+55	1.88	105.11						Top Curb 1.25 Bottom 1.43 E.P. 1.48 20.5
		0.78	1.27	1.09				17.3
+75		0.99	1.30	0.87				0.80 1.36 1.49 24.9 28.4
				13.0				
812+00		1.18	1.46	0.97	1.4	2.0	1.1	0.96 1.31 1.63 37 41
				12.5	18	24	31	
+25		1.41	1.74	1.24	2.1	3.7	4.6	1.35 1.90 2.07 52.3 56.5
				11.6	27	31	45	
+39	30 RT.	6.22	F.L.	12" CONC. PIPE				
+50		1.66	1.92	1.43	1.8	2.7	4.3	6.5 7.1 7.0 5.9 3.3 2.5 14 18 24 31 36 39 45 58 66
				10.5	42	42	55	47 2.74 CONC. 58 ON BOARD RAIL END.
								2.56 2.75 71.5 76 Berm E.P.
+75		1.98	2.35	2.5	3.4	5.0	7.0	8.7 10.8 10.1 8.0 6.7 36 40 45 58 66
				9.5	14	24	31	4.2 3.4 3.35 3.64 83 90 96 100 Berm

S.E.P. of E.B.L. U.S. 24



Edge berm

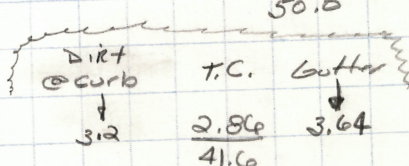
Ramp E.P.



PERSONNEL TITLE PERSONNEL TITLE COUNTY LUCAS DATE 8-17-81  
 HOFFMAN \_\_\_\_\_  
 Householder \_\_\_\_\_ S. R. U.S. 24 WEATHER Clear  
 Koehrke \_\_\_\_\_ SEC. Jerome-Coxiant TEMP. +75°

DESCRIPTION X-Sections of Ramp Areas - 24 & 475 - Ramp "E" JOB NO. \_\_\_\_\_

STA	+	π	-	REL.	CENTER LINE								RIGHT
T.B.M.#2	3.48	106.71		103.23									Top of SW. Bolt, West END Guard Rail, STA 812 + 60 - Rt.
T.P.	1.11	99.07	8.75	97.96									Top of S.E. Bolt, EAST. END Guard Rail STA 819 + 10 Lt.
T.B.M.#3			5.71	93.36									
	1.55	94.91											
	Edge of Berm												
818+75	F.P. 0.69	1.10	1.5	3.1	5.8	8.2	8.7	8.2	5.5	4.5	4.28	4.39	
		8	15	23	35	46	50	55	66	72	76.5	79.5	
819+00	S.E.P. of F.B.L. U.S. 24 0.99	1.37	1.8	3.4	6.0	8.1	7.7	5.6	4.3		4.12	4.29	
		8	15	23	35	43	46	55	63		67.0	70.0	
+25		1.31	2.1	3.5	6.1	7.6	5.7	4.2			4.05	4.20	
		8	15	23	35	40	46	54			59.0	62.0	
+50		1.63	2.5	3.9	5.9	4.8	4.1				3.90	4.02	
		8	15	23	33	40	45				50.0	52.0	
+54	END Curb - top Conc.		3.18	47' Rt.									
+75		1.90	1.7	4.2	5.1	4.2	3.3					3.93	
		8	15	23	28	33	38					45.5	
820+00		2.16	2.9	4.4	3.7	2.9					2.9	2.76	3.56
		8	15	23	28	33					35.2	39.0	
+25		2.38	3.2	3.9	2.9						2.7	2.63	3.39
		8	15	19	26						29.3	33.2	
+50		2.51	3.0	3.7	2.9						2.7	2.61	3.40
		8	12	16	21						24.8	28.6	
+75		2.60	3.1	3.4	2.9						2.8	2.58	3.32
		8	12	15	19						21.6	25.0	
T.P.			2.50	92.41									



PERSONNEL TITLE PERSONNEL TITLE COUNTY LUCAS DATE 8-17-81  
Hoffman \_\_\_\_\_ S. R. U.S. 24 WEATHER Clear  
Hausdollar \_\_\_\_\_ SEC. Lerome - CONSTANT TEMP. + 75°  
Lodike \_\_\_\_\_ DESCRIPTION X-sections of Ramp Areas - 24 & 475 - Ramp "E" JOB NO. \_\_\_\_\_

STA	+	π	-	FLEU			
T.P.					LEFT	CENTER LINE	RIGHT
	3.90	96.31		92.41			
			Berm 8'		Gutter	Top of curb	Gutter 3' past curb
821+00	4.00	4.40		4.67	$\frac{3.86}{18.9}$	4.56	4.83
	S.E.P. of E.B.L. U.S. 24						
+50	3.95	4.29		4.68	$\frac{3.75}{15.2}$	4.46	4.61
822+00	3.90	4.17		4.43	$\frac{3.53}{13.9}$	4.26	4.44
+50	3.75	4.07		4.18	$\frac{3.37}{12.7}$	4.12	4.19
823+00	3.67	3.94		4.04	$\frac{3.24}{12.3}$	3.95	4.00
+50	3.61	4.92		3.99	$\frac{3.09}{11.4}$	3.80	3.87
824+00	3.50	3.80		3.91	$\frac{2.94}{11.0}$	3.63	3.71
+50	3.32	3.56		3.69	$\frac{2.81}{10.8}$	3.55	3.61
825+00	3.29	3.54		3.65	$\frac{2.74}{10.6}$	3.49	3.56
+50	3.15	3.33		3.37	$\frac{2.69}{10.5}$	3.36	3.39
END CURB	+52.5	3.14	3.22	—	3.22	—	3.36
	T.B.M. #3		2.97	93.34	✓ 93.36		
					O.K.		

PERSONNEL TITLE PERSONNEL TITLE COUNTY LUCAS DATE 8-17-81  
 HOFFMAN \_\_\_\_\_ S. R. 4.S. 24 WEATHER Clear  
 Household \_\_\_\_\_ SEC. Jerome - Conant TEMP. +25  
 Loehrke \_\_\_\_\_

DESCRIPTION CK BACK to TBM #2 JOB NO. \_\_\_\_\_  
 LEFT CENTER LINE RIGHT

	+	π	-	ELEV	
T.B.M.#3	7.21	100.57		93.36	
T.P.			0.73	99.84	
T.B.M.#2	7.09	106.93	3.71	103.22	✓ OK, 103.23

PERSONNEL TITLE PERSONNEL TITLE

COUNTY LUCAS DATE 8-18-81

HOFFMAN  
Householder  
Loehrke

S. R. U.S. 24 WEATHER Clear

SEC. CONANT - Jerome TEMP. +55°

DESCRIPTION X-Sections of Ramp Areas - 24' 475 Ramp "E" JOB NO. \_\_\_\_\_

STA	+	π	-	ELEV	LEFT	CENTER LINE	RIGHT
T.B.M.#3	2.90	96.26		93.36			TOP of S.E. Bolt, EAST END Guard Rail, sta 819 +10 - Lt.
					Ramp E.P.	Berm	Ø - N.E.P. of W.B.L. of U.S. 24
820+50				$\frac{3.62}{56}$	$\frac{3.54}{34.8}$	$\frac{3.5}{31}$ $\frac{4.3}{39}$ $\frac{4.9}{30}$ $\frac{4.3}{17}$	$\frac{4.07}{8}$ 3.79 Berm ↓
+75				$\frac{3.77}{48.5}$	$\frac{3.71}{46.8}$	$\frac{3.6}{45}$ $\frac{3.9}{39}$ $\frac{4.5}{30}$ $\frac{4.6}{25}$ $\frac{4.4}{17}$	$\frac{4.13}{8}$ 3.87
821+00				$\frac{3.88}{42.3}$	$\frac{3.78}{40.0}$	$\frac{3.8}{37}$ $\frac{4.1}{30}$ $\frac{4.4}{25}$ $\frac{4.3}{17}$	$\frac{4.18}{8}$ 3.91
+19	END curb			$\frac{3.55}{10.5}$	top of curb		
+20	END curb			$\frac{3.34}{35.0}$	top of curb		
+25				$\frac{4.01}{37.5}$	Gutter TOP curb	$\frac{3.4}{32}$ $\frac{3.8}{27}$ $\frac{4.0}{21}$ $\frac{3.8}{17}$	TOP curb Gutter $\frac{3.55}{10.8}$ 3.97 3.89
+50				$\frac{4.02}{32.5}$	3.97	$\frac{3.39}{28.9}$	$\frac{3.6}{21}$ $\frac{3.51}{11.5}$ 3.95 3.86 T.C.
+75				$\frac{4.02}{28.0}$	3.94	$\frac{3.40}{24.5}$	$\frac{3.3}{19}$ $\frac{3.43}{12.8}$ 3.85 3.82
822+00				$\frac{4.16}{24.3}$	3.98	$\frac{3.59}{20.5}$	$\frac{3.40}{13.8}$ 3.85 3.79
+20.3	HOSE/corb			$\frac{4.13}{20.5}$		$\frac{3.95}{17.5}$ $\frac{3.85}{16.3}$	$\frac{3.74}{14.5}$ 3.74
+25				$\frac{4.01}{20.5}$	E.P.		$\frac{3.92}{16}$ $\frac{3.90}{12}$ 3.75
T.B.M.#3			2.90	93.36			✓OK.

PERSONNEL TITLE PERSONNEL TITLE

COUNTY LUCAS DATE 8-18-81

Hoffman  
Householder

S. R. U.S. 24 WEATHER clear

Loehrke

SEC. Jerome - Conant TEMP. +60°

DESCRIPTION X-Sections of Ramp Areas - 24' 475 - Ramp "B" JOB NO. \_\_\_\_\_

STA	+	π	-	ELEV.	RIGHT
T.B.M. #12	3.46	106.69		103.23	TOP of S.W. Bolt, West End Guard Rail, Sta 812 +60, Rt. ⊥ = A.E.P. of W.B.L. Berm
812+50	Ramp F.P. ↓ 1.12 15	Gutter Top Cut Ditch 1.17			$\frac{1.08}{12}$ $\frac{1.11}{8}$ 1.23
+54	1.15 15.2	1.17	0.45 12.2	1.23 Gutter	$\frac{1.16}{8}$ 1.27
+75	1.56 19.3	1.47	0.75 16.3	1.77 Gutter	$\frac{1.46}{8}$ 1.44
813+00	1.98 25.3	1.88	1.16 22.3	1.70 Ditch ↓	$\frac{1.9}{16}$ $\frac{1.8}{12}$ $\frac{1.93}{8}$ 1.87
+25	2.35 33.5	2.25	1.53 30.5	1.68	$\frac{1.8}{27}$ $\frac{2.8}{22}$ $\frac{3.2}{19}$ $\frac{2.4}{12}$ $\frac{2.19}{8}$ 2.15
+50	E.P.E. Berm 2.82 44.5	2.81	1.96 41.7	2.19	$\frac{2.3}{38}$ $\frac{3.8}{32}$ $\frac{4.9}{26}$ $\frac{3.9}{20}$ $\frac{2.7}{12}$ $\frac{2.48}{8}$ 2.41
+75	3.25 59.0	3.14	2.40 55.2	2.59	$\frac{2.7}{51}$ $\frac{4.6}{42}$ $\frac{6.5}{32}$ $\frac{4.4}{20}$ $\frac{3.0}{12}$ $\frac{2.80}{8}$ 2.71
814+00	3.64 74.0	3.55	2.72 69.5	2.90	$\frac{3.0}{66}$ $\frac{6.0}{51}$ $\frac{8.4}{38}$ $\frac{7.5}{32}$ $\frac{4.6}{20}$ $\frac{3.3}{12}$ $\frac{3.17}{8}$ 3.07
+25	4.13 97	3.92	3.38 92	3.57	$\frac{3.5}{89}$ $\frac{7.6}{66}$ $\frac{10.2}{51}$ $\frac{11.0}{45}$ $\frac{9.8}{38}$ $\frac{8.3}{32}$ $\frac{5.2}{20}$ $\frac{3.6}{12}$ $\frac{3.48}{8}$ 3.37
+27	END CORB 98' Lt.				

PERSONNEL TITLE PERSONNEL TITLE COUNTY LUCAS DATE 8-18-81  
Hoffman \_\_\_\_\_ Householder \_\_\_\_\_ S. R. U.S. 24 WEATHER Clear  
Loehrke \_\_\_\_\_ SEC. Jerome - Conant TEMP. +60°

DESCRIPTION X-Sections of Camp Areas - 24 5' 475 - Camp "B" JOB NO. \_\_\_\_\_  
 LEFT CENTER LINE RIGHT

STA	+	π	-	ELEV										
		106.69												
	Ramp F.P. ↓	Berm ↓												
814+50	4.72 123	4.57 117	5.3 109	6.9 100	9.1 89	13.0 66	15.4 53	13.3 45	9.8 32	6.0 20	3.8 12	3.81 8	3.70	
+75			13.2 109	14.7 100	16.6 89	19.2 70	20.8 61	18.0 53	15.7 45	11.2 32	6.8 20	4.5 12	4.21 8	4.03
	5.68 168	5.45 161				5.7 153	9.3 130	12.3 115						
814+91			-24.38	24" R.C.P. in Handwall										
60' Lt														
815+00			19.8 115	20.9 109	22.5 100	23.2 89	23.7 73	19.2 53	16.1 45	11.4 32	7.2 20	5.1 12	4.72 8	4.41
	7.05 238	6.60 223						6.6 210	6.8 200	9.7 175	13.1 153	16.5 130		
T.B.M.#2			3.46	103.23	103.23									

↓ = N.E.P. of W.B.L.  
 Berm ↓

PERSONNEL TITLE PERSONNEL TITLE COUNTY LUCAS DATE 8-19-81  
 Hoffmann \_\_\_\_\_  
 Householder \_\_\_\_\_ S. R. U.S. 24 WEATHER Clear  
 Loehrke \_\_\_\_\_ SEC. Jerome-Coxant TEMP. +60°

DESCRIPTION X-Sections of Ramp Areas - 24 & 475 - Ramp "C" JOB NO. \_\_\_\_\_  
 LEFT CENTER LINE RIGHT

STA	+	π	-	ELEV										
T.B.M.#1	8.97	108.97		100.00	TOP of S. E. Bolt, EAST END									
T.P.	3.00	108.77	3.20	105.77	Guard Rail - STA. 800+20, Rt. ↓ = N.E.P. of W.B.L. → ↓ berm									
802+25	$\frac{12.8}{150}$	$\frac{15.4}{125}$	$\frac{16.7}{110}$	$\frac{17.2}{100}$	$\frac{17.4}{88}$	$\frac{18.0}{68}$	$\frac{19.1}{58}$	$\frac{13.9}{42}$	$\frac{6.9}{22}$	$\frac{3.8}{12}$	$\frac{3.97}{8}$	$\frac{3.72}{3}$	3.86	
+50		$\frac{6.7}{150}$	$\frac{8.6}{125}$	$\frac{11.5}{100}$	$\frac{13.2}{88}$	$\frac{15.8}{68}$	$\frac{17.3}{56}$	$\frac{12.3}{42}$	$\frac{6.4}{22}$	$\frac{3.7}{12}$	$\frac{3.80}{8}$	$\frac{3.53}{3}$	3.59	
+75	$\frac{4.75}{136}$	$\frac{4.44}{131}$	$\frac{4.3}{120}$	$\frac{6.0}{100}$	$\frac{7.4}{88}$	$\frac{11.0}{68}$	$\frac{14.1}{50}$	$\frac{12.0}{42}$	$\frac{5.5}{22}$	$\frac{3.3}{12}$	$\frac{3.49}{8}$	$\frac{3.22}{3}$	3.27	
803+00	$\frac{3.81}{99}$	$\frac{3.56}{95}$			$\frac{3.7}{83}$	$\frac{6.5}{64}$	$\frac{9.3}{50}$	$\frac{10.4}{42}$	$\frac{4.5}{22}$	$\frac{2.7}{12}$	$\frac{2.91}{8}$	$\frac{2.94}{3}$	3.01	
+11	END curb 10.9' Lt. T.C. = -2.16										T.C. ↓	Gutter Berm ↓		
+25	$\frac{3.15}{74}$	$\frac{2.96}{70}$			$\frac{2.7}{63}$	$\frac{4.0}{52}$	$\frac{6.2}{42}$	$\frac{7.0}{36}$	$\frac{3.7}{22}$	$\frac{2.1}{14}$	$\frac{2.08}{11.5}$	$\frac{2.60}{3}$	$\frac{2.75}{3}$	2.78
+26	68' Lt. END curb T.C. = -2.31													
+50	$\frac{2.85}{55}$	$\frac{2.60}{50.7}$	$\frac{2.11}{50.7}$		$\frac{2.2}{47}$	$\frac{3.7}{36}$	$\frac{4.3}{29}$	$\frac{3.2}{22}$	$\frac{2.0}{14}$	$\frac{1.97}{12.1}$	$\frac{2.42}{8}$	$\frac{2.53}{3}$	2.57	
+75	$\frac{2.60}{39.5}$	$\frac{2.40}{35.6}$	$\frac{1.85}{35.6}$			$\frac{1.9}{33}$	$\frac{2.5}{25}$	$\frac{2.4}{22}$	$\frac{1.9}{15}$	$\frac{1.89}{12.7}$	$\frac{2.34}{8}$	$\frac{2.44}{3}$	2.45	
804+00	$\frac{2.43}{27.4}$	$\frac{2.27}{23.1}$	$\frac{1.72}{23.1}$							$\frac{1.79}{13.7}$	$\frac{2.26}{8}$	$\frac{2.25}{3}$	2.28	
+14	$\frac{2.30}{21.7}$									$\frac{1.74}{15.7}$	$\frac{2.13}{3}$		2.15	
+25	$\frac{2.18}{18}$											$\frac{2.06}{8}$	2.11	
T.B.M.#1				8.77	100.00	✓								

PERSONNEL TITLE PERSONNEL TITLE

COUNTY Lucas DATE 8-18-81

Hoffman  
Householder  
Lochka

S. R. U.S. 24 WEATHER Clear

SEC. Jerome-Conant TEMP. +75°

DESCRIPTION X-sections of Ramp Areas- 24F475- Ramp "6" JOB NO.

STA	+	π	-	ELEV.	
T.B.M.#1	1.75	101.75		100.00	TOP of S.E. Bolt, EAST END
T.P.	2.96	96.84	7.87	93.88	Guard rail - STA 800+20, Rt.
					Q = N.E.P. of W.B.L.
791+50	3.09 14.2	2.99 11.2 part.			$\frac{2.94}{8}$ 2.90
+65	3.18 14.1	3.16 11.1	3.13		$\frac{3.03}{8}$ 2.95
792+00	3.24 14.4	3.30 11.4	3.28		$\frac{3.16}{8}$ 2.96
+50	3.44 15.1	3.37 12.1	3.41		$\frac{3.25}{8}$ 3.10
793+00	3.56 15.8	3.49 12.8	3.62		$\frac{3.53}{8}$ 3.25
+50	3.74 16.5	3.74 13.5	3.71		$\frac{3.56}{8}$ 3.31
794+00	3.84 17.2	3.78 14.2	3.85		$\frac{3.61}{8}$ 3.40
+50	4.04 18.0	4.00 15.0	3.79		$\frac{3.56}{8}$ 3.45
+83 15' Lt.					C.B. INLET @ curb -4.03 T.C. = -3.23 Feather after curb removal (Not on main sheet 8)
795+00	4.16 18.2	4.03 15.2	3.81		$\frac{3.54}{8}$ 3.39

PERSONNEL TITLE PERSONNEL TITLE COUNTY LUCAS DATE 8-19-81  
 Hoffmann \_\_\_\_\_  
 Householder \_\_\_\_\_ S. R. U. S. 24 WEATHER clear  
 Loehrke \_\_\_\_\_ SEC. Jerome - Conant TEMP. +75°

DESCRIPTION X-SECTIONS of Ramp Areas - 24' 475 - Ramp "B" JOB NO. \_\_\_\_\_  
 LEFT CENTER LINE RIGHT

STA	+	T	-	ELEV										
		96.84												
	RAMP E.P.									$\mu = N.E.P. \text{ of } W.B.L. ?$				
795+50	3.99 19.3	3.85 16.3	3.06 16.3	3.85					$\frac{3.51}{8}$	3.30				
796+00	3.72 21.7	3.58 18.7	2.76 18.7	3.69					$\frac{3.29}{8}$	3.01				
T.P.	5.66	99.54	2.96	93.88										
+25	6.34 24.7	6.06 21.1	5.35 21.1	5.61		$\frac{5.7}{19}$	$\frac{5.9}{16}$	$\frac{5.8}{12}$	$\frac{5.78}{8}$	5.47				
+50	6.22 27.5	5.92 24	5.18 24	5.20		$\frac{5.5}{20}$	$\frac{6.0}{16}$	$\frac{5.7}{12}$	$\frac{5.43}{8}$	5.08				
+75	6.06 31.5	5.77 27.7	5.04 27.7	5.07		$\frac{5.3}{24}$	$\frac{5.8}{18}$	$\frac{5.1}{12}$	$\frac{5.01}{8}$	4.77				
797+00	5.92 36.0	5.66 32.4	4.89 32.4	5.01		$\frac{5.0}{29}$	$\frac{5.9}{21}$	$\frac{4.4}{12}$	$\frac{4.39}{8}$	4.15				
+25	5.89 41.4	5.64 37.8	4.91 37.8	5.05		$\frac{5.0}{35}$	$\frac{5.7}{29}$	$\frac{6.2}{24}$	$\frac{5.1}{18}$	$\frac{3.9}{12}$	$\frac{3.82}{8}$	3.59		
+50	5.78 48.5	5.51 44.8	4.78 44.8	4.91		$\frac{5.0}{41}$	$\frac{5.6}{36}$	$\frac{6.6}{29}$	$\frac{4.4}{18}$	$\frac{3.4}{12}$	$\frac{3.31}{8}$	3.04		
+66	EXT CURB		50' Lt.											
+75	5.63 56.5	5.55 53.5	5.5 53.5			$\frac{5.5}{49}$	$\frac{6.3}{41}$	$\frac{7.1}{34}$	$\frac{6.3}{29}$	$\frac{3.8}{18}$	$\frac{2.7}{12}$	$\frac{2.62}{8}$	2.42	
798+00	5.53 63.4	5.51 60				$\frac{5.5}{56}$	$\frac{6.4}{49}$	$\frac{7.8}{39}$	$\frac{6.8}{34}$	$\frac{5.7}{29}$	$\frac{3.1}{18}$	$\frac{2.1}{12}$	$\frac{2.01}{8}$	1.83

PERSONNEL TITLE PERSONNEL TITLE COUNTY LUCAS DATE 8-18-81  
 Householder \_\_\_\_\_ S. R. U.S. 24 WEATHER Clear  
 \_\_\_\_\_ SEC. Jerome - Conant TEMP. +75°

DESCRIPTION X-Sections of Camp Areas - 24 & 475 - Ramp "B" JOB NO. \_\_\_\_\_  
LEFT CENTER LINE RIGHT

STA	+	π	-	ELEV								
		99.54										
	RAMP FP ↓	Berm ↓										
798+25	$\frac{5.41}{76}$	$\frac{5.40}{73}$	$\frac{5.4}{68}$	$\frac{6.5}{60}$	$\frac{7.8}{52}$	$\frac{9.0}{45}$	$\frac{7.7}{39}$	$\frac{5.3}{29}$	$\frac{2.7}{18}$	$\frac{1.4}{12}$	$\frac{1.29}{8}$	1.20
T.P.	5.84	103.02	2.30	97.18								
T.B.M. #1			3.04	99.98								✓ 100.00 Assumed.

ℓ = N.E.P. of W.B.L.