

STATE OF OHIO DEPARTMENT OF HIGHWAYS LUC-24-(17.09) (19.51) LUCAS COUNTY CITY OF MAUMEE

DU-1043(3)
DU-1120(2)

FED. RD. DIVISION	STATE	PROJECT
2	OHIO	DU-1043(3) DU-1120(2)

1/15

518

SEP 1 1958
GROUND PHOTOLAB

CONVENTIONAL SIGNS

County Line	-----
Township Line	-----
Section Line	-----
Center Line	-----
Corporation Line	-----
Fence Line	-----
Guard Rail (Existing)	-----
Pole Line	-----
Railroad	-----
Drainage	-----
	Existing ----- New -----

INDEX OF SHEETS

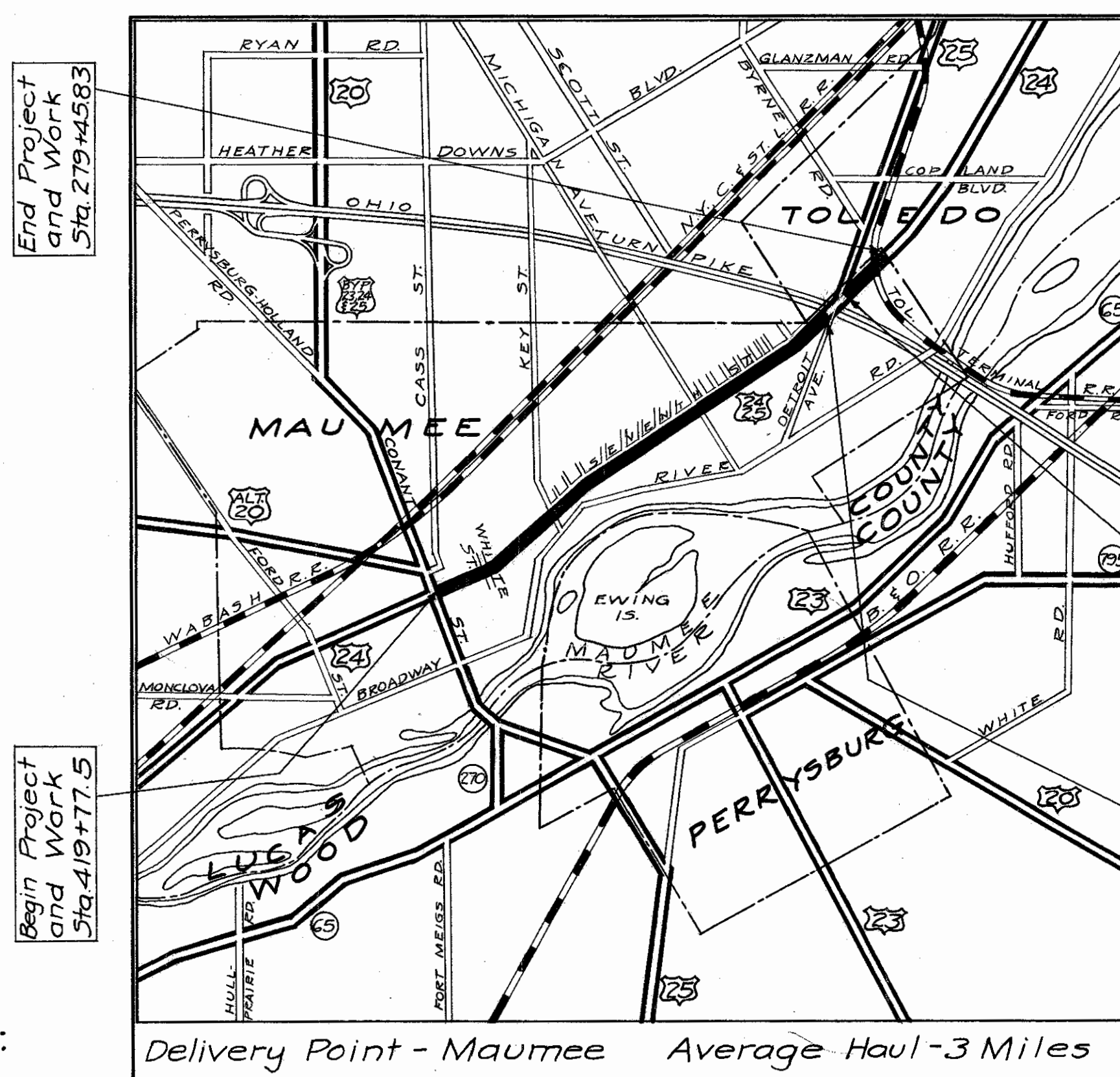
Title Sheet	1
Typical Sections	2
General Notes	3
General Summary	3
Calculations	4
Sub Summaries	4
Plan and Profile Sheets	5-14
Intersection Details	15

LINE DATA

Begin Work & Begin Project DU-1043(3) Sta. 419+77.5
Suspend Work & End Project DU-1043(3) Sta. 297+05
Net Length of Project DU-1043(3) = 12,272.5 Lin. Ft. or 2.324 Mi.

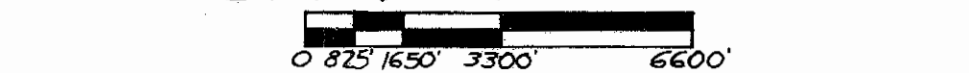
Resume Work & Begin Project DU-1120(2) Sta. 293+32.2
End Work & End Project DU-1120(2) Sta. 279+45.83
Net Length of Project DU-1120(2) = 1,386.37 Lin. Ft. or 0.262 Mi.

Total Net Length of Project and Work = 13,658.87 Lin. Ft. or 2.586 Mi.



LOCATION MAP

SCALE IN FEET



Portion to be improved:

State roads:

Other roads:

SCALE

Plan: 1" = 50'
Profile: Horizontal: 1" = 50'
Plan: Vertical: 1" = 5'

STANDARD DRAWINGS

G-707	G-1-56	I-12	7-1-54
I-1234&5	4-24-58	I-21-23	8-1-56
I-8CB22A&B	8-1-56		
L-3	4-1-50		
L-3-A	4-1-50		
RI-1	1-3-55		
T-35	1-2-56		
L-1	4-1-50		

SUPPLEMENTAL SPECIFICATIONS

E-101	1-1-57
B-219	8-2-57
9	6-24-58

The standard specifications of the State of Ohio, Department of Highways, including changes and supplemental specifications listed in the proposal shall govern this improvement.

The right-of-way for this improvement will be provided by the State of Ohio.

I hereby approve these plans and declare that the making of this improvement will not require the closing of the highway to traffic and that provisions for the maintenance and safety of traffic will be as set forth on the plans and estimates.

Approved: LC Roush
Date: 6-6-58 Division Deputy Director

Approved: G. H. Mahoney
Date: 7-2-58 Deputy Director of Planning and Programming

Approved: _____
Date: _____ Engineer of Bridges

Approved: R.E. Schultz
Date: 6-30-58 Engineer of Location and Design

Approved: R.E. Muehlen
Date: 6-20-58 Deputy Director of Design and Construction

Approved: George J. Shorniger
Date: 7/2/58 First Assistant Director

Approved: Charles M. Yodanis
Date: 7/3/58 Director of Highways

Print Approved: Odell B. Bradshaw
Date: 6-17-58 Service Director, City of Maumee

SEP 14 1962
GROUND PHOTOLAB

DEPARTMENT OF COMMERCE
BUREAU OF PUBLIC ROADS

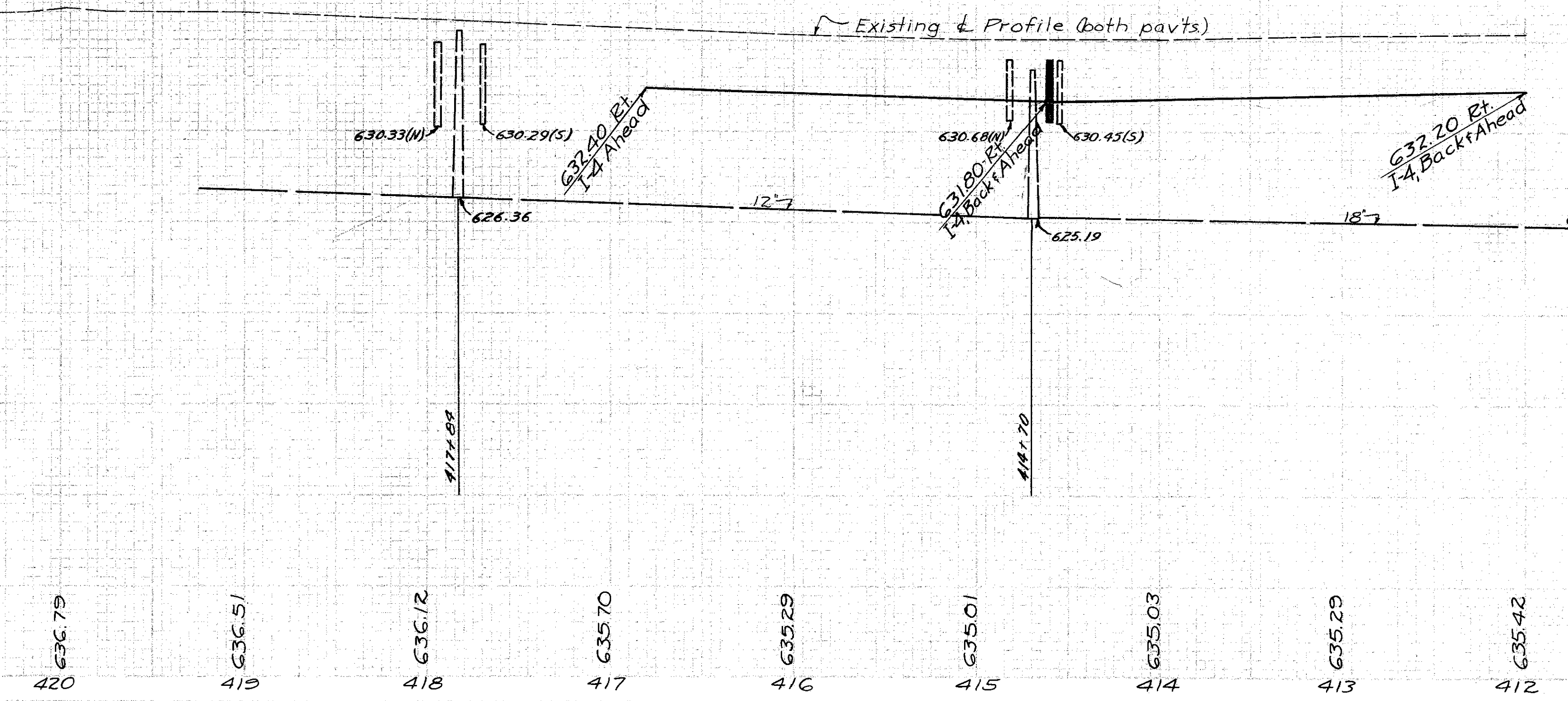
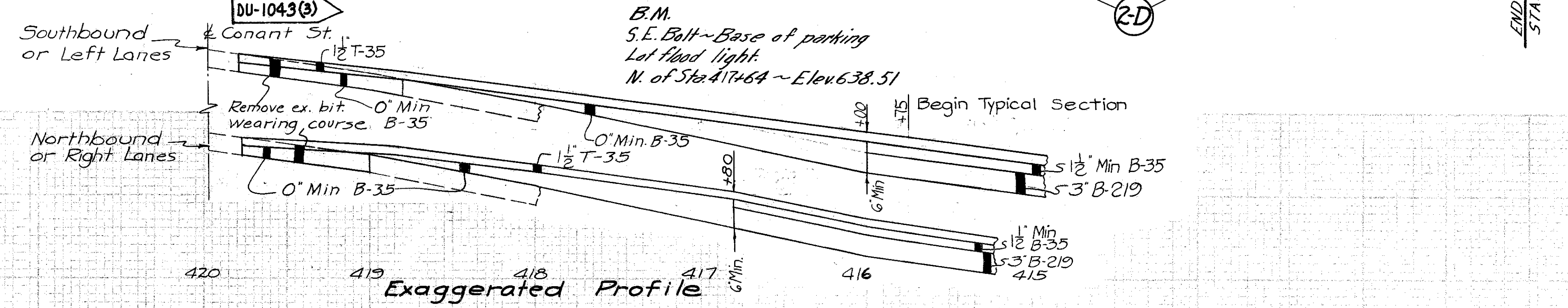
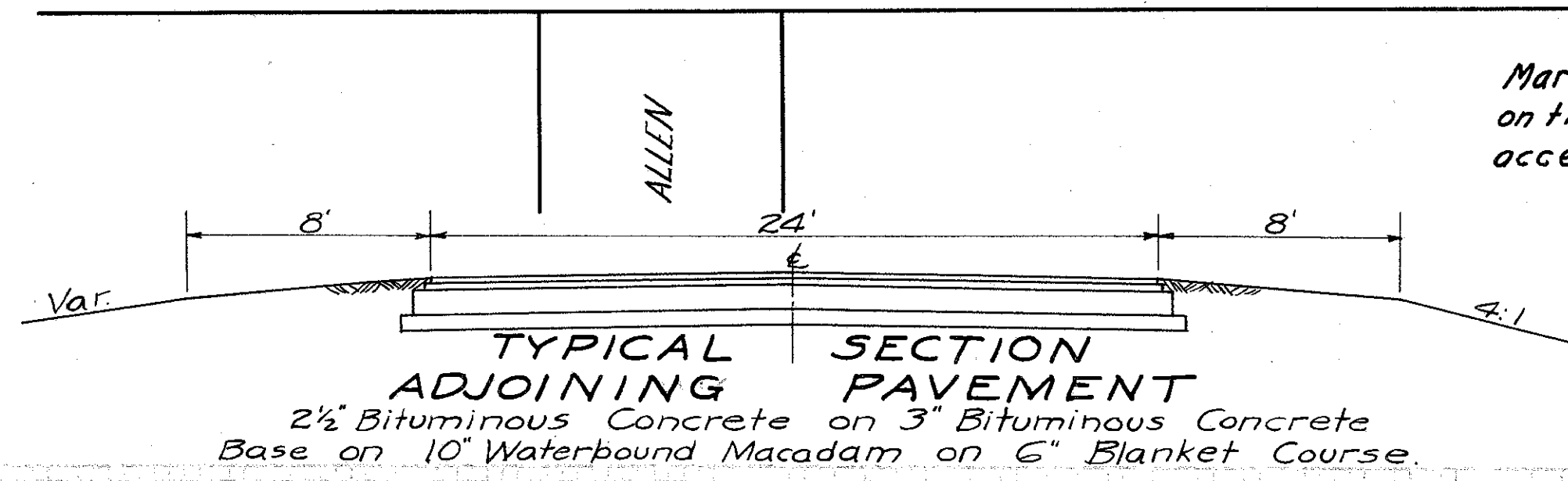
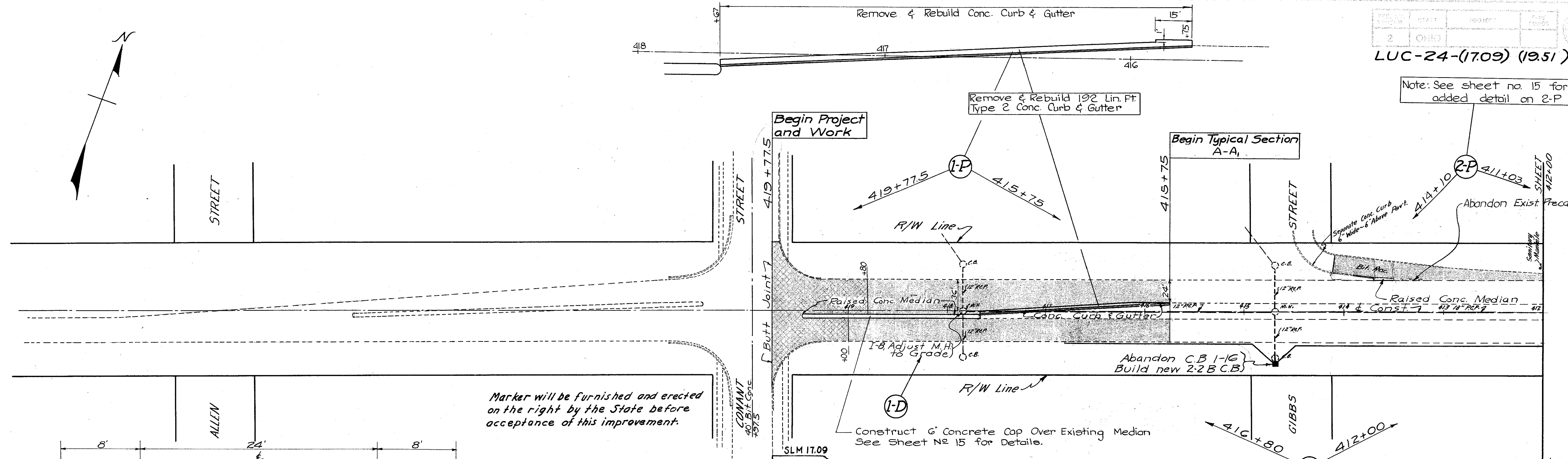
APPROVED:

DIVISION ENGINEER _____ DATE _____

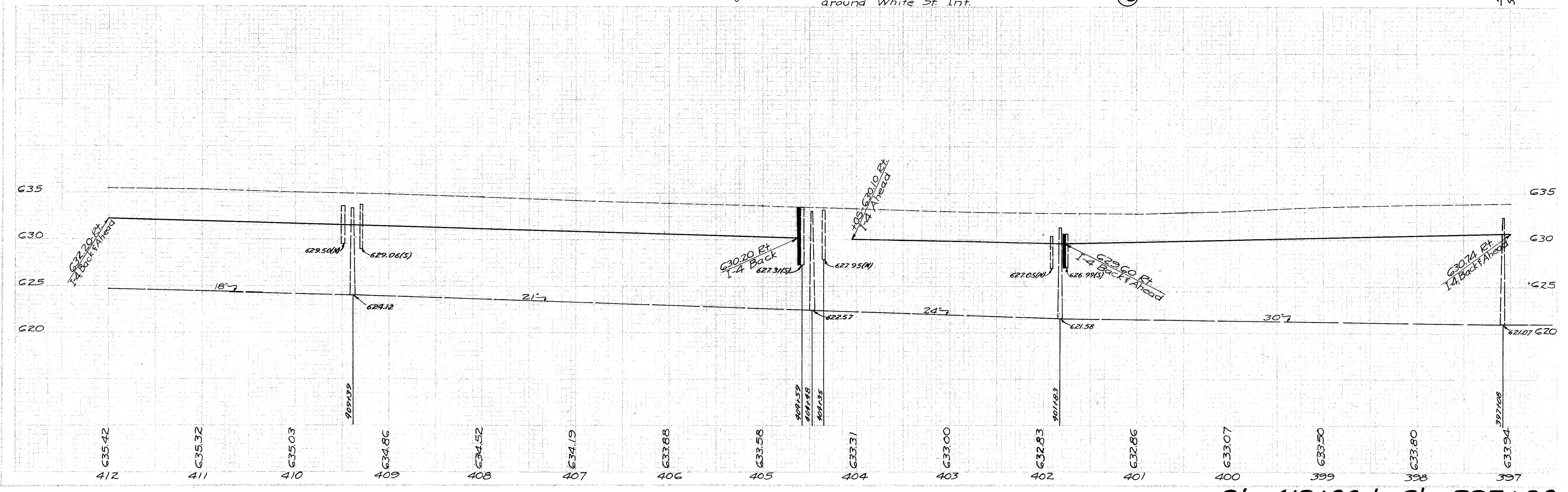
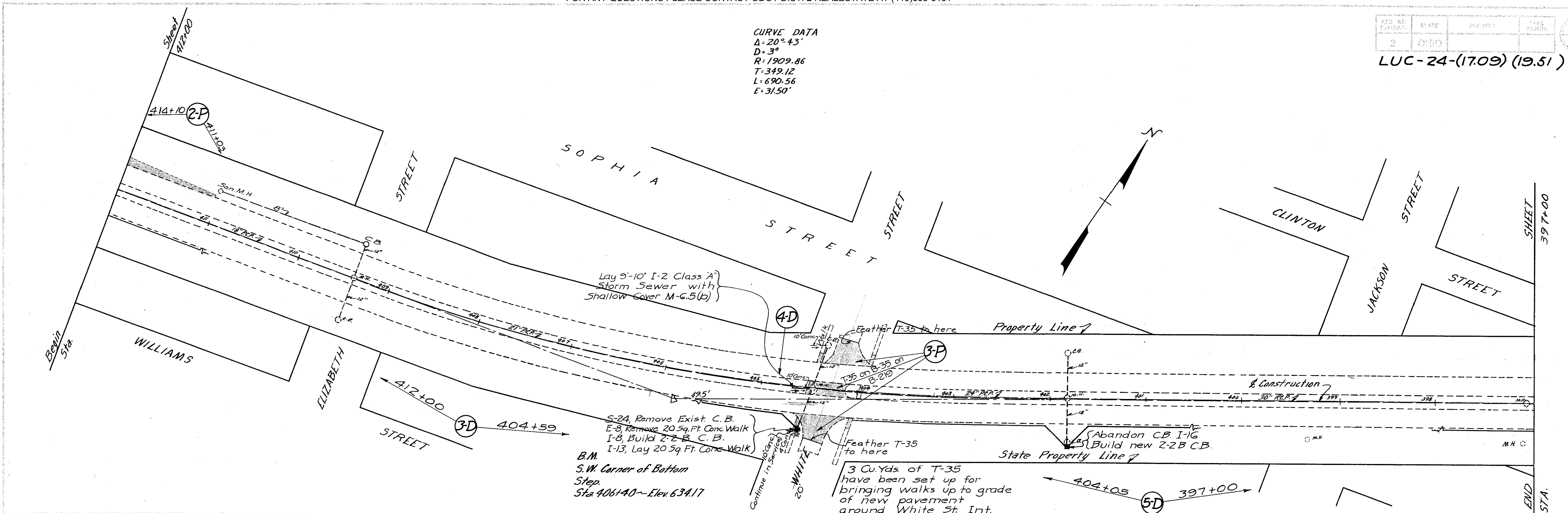
File No. LUCAS COUNTY LUC-24(1709)-(19.45)
Date of letting: _____ 19____
Contract No. _____

518

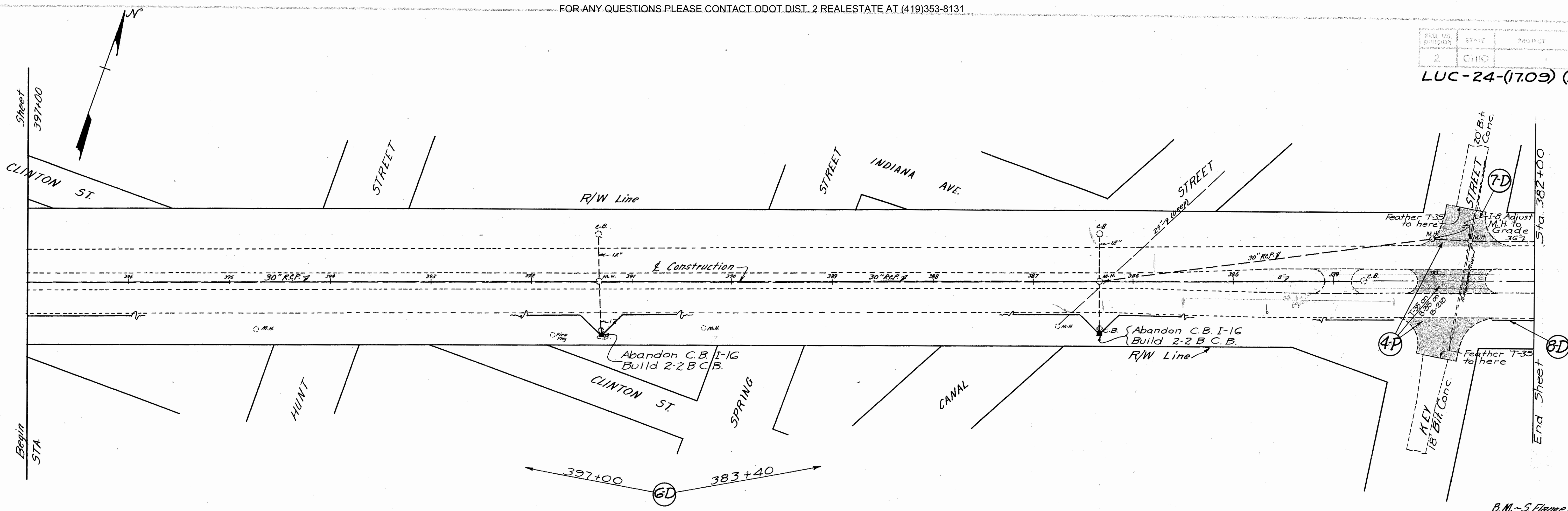
Note: See sheet no 15 for added detail on 2-P



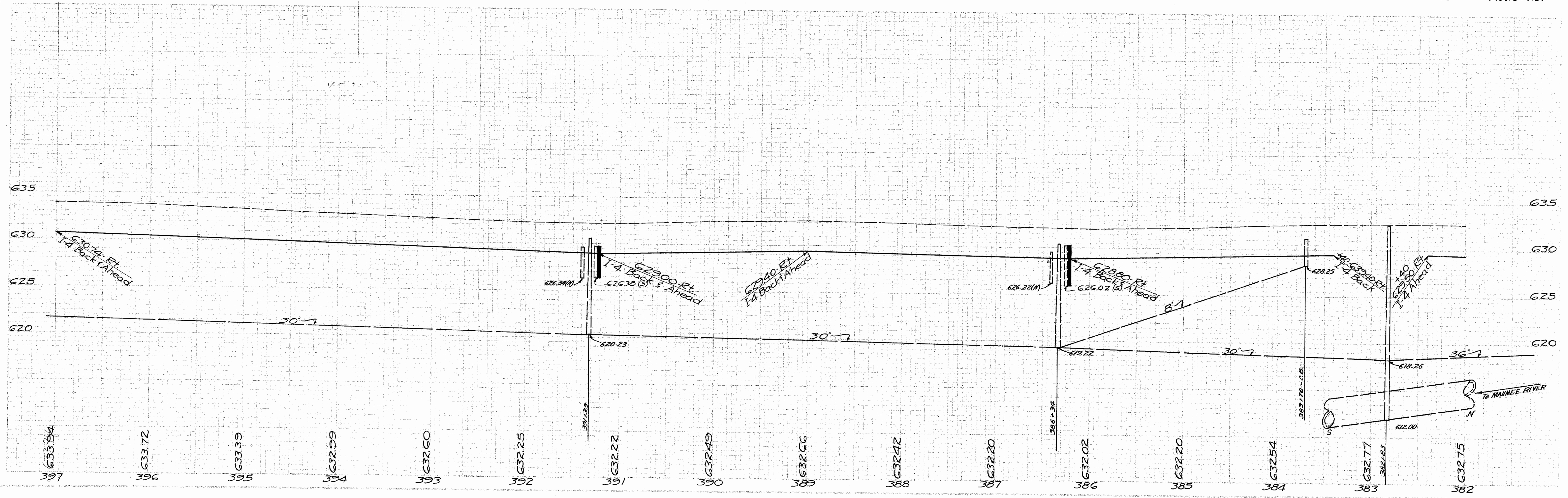
CURVE DATA
 $\Delta = 20^\circ 43'$
 $D = 3^\circ$
 $R = 1909.86$
 $T = 349.12$
 $L = 690.56$
 $E = 31.50'$



Sta. 412+00 to Sta. 397+00



B.M. - S. Flange Bolt on Hyd. - N.W. Corner 7th & Key Sta. 381+75 ± ~ Elev. 634.31

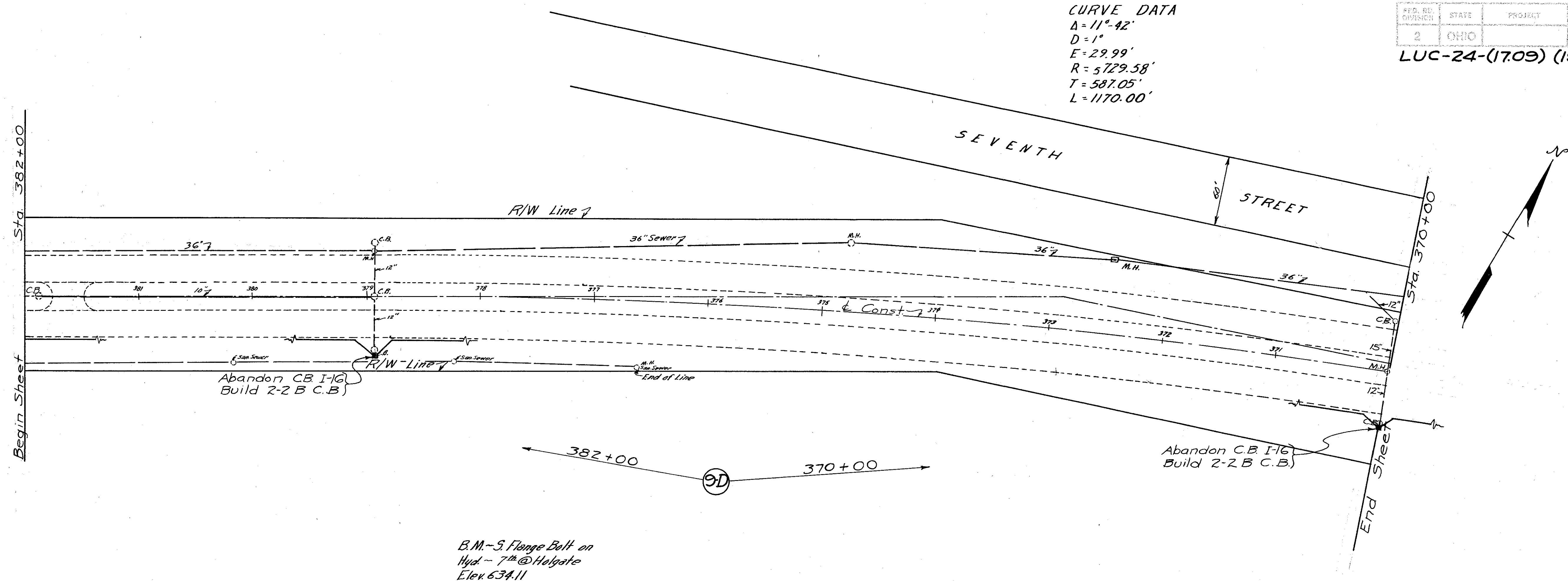


Sta. 397+00 to Sta. 382+00

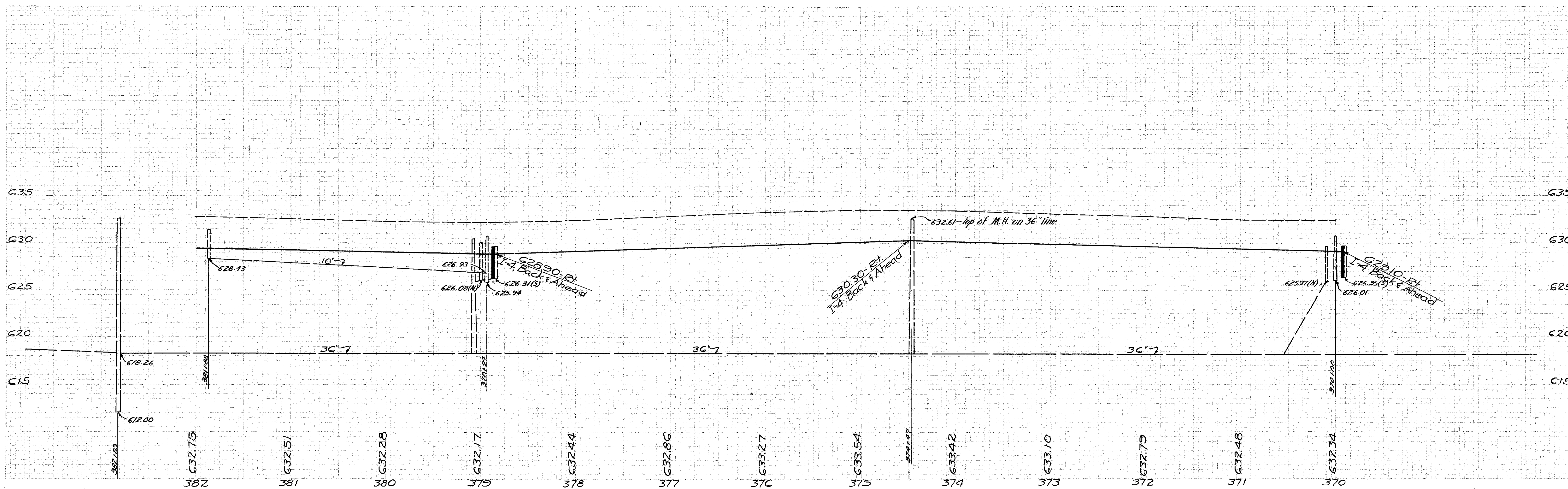
FED. RD. DISTRICT	STATE	PROJECT	TYPE	DATE
2	OHIO			8/15

LUC-24-(1709) (19.51)

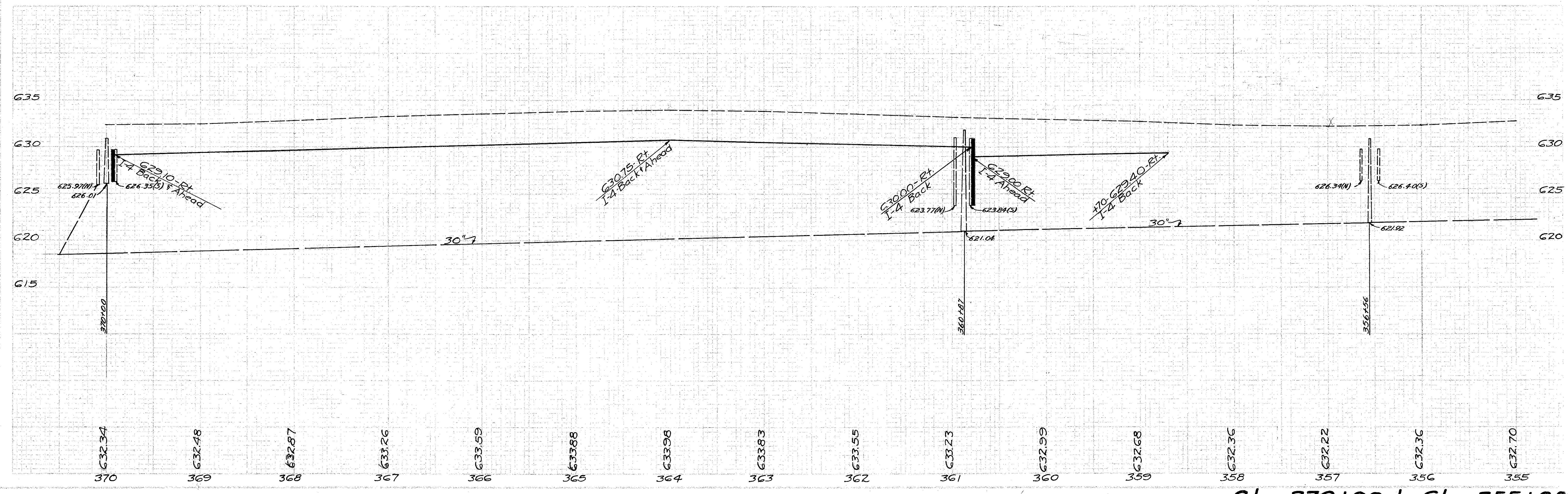
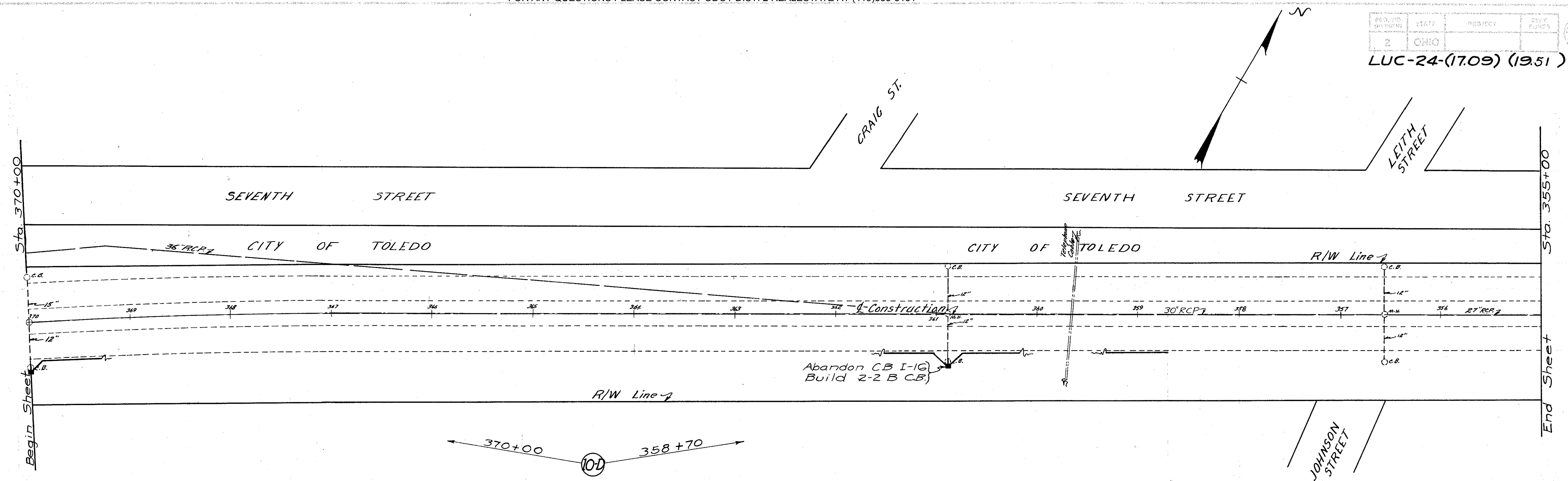
CURVE DATA
 $\Delta = 11^{\circ}42'$
 $D = 1^{\circ}$
 $E = 29.99'$
 $R = 5729.58'$
 $T = 587.05'$
 $L = 1170.00'$



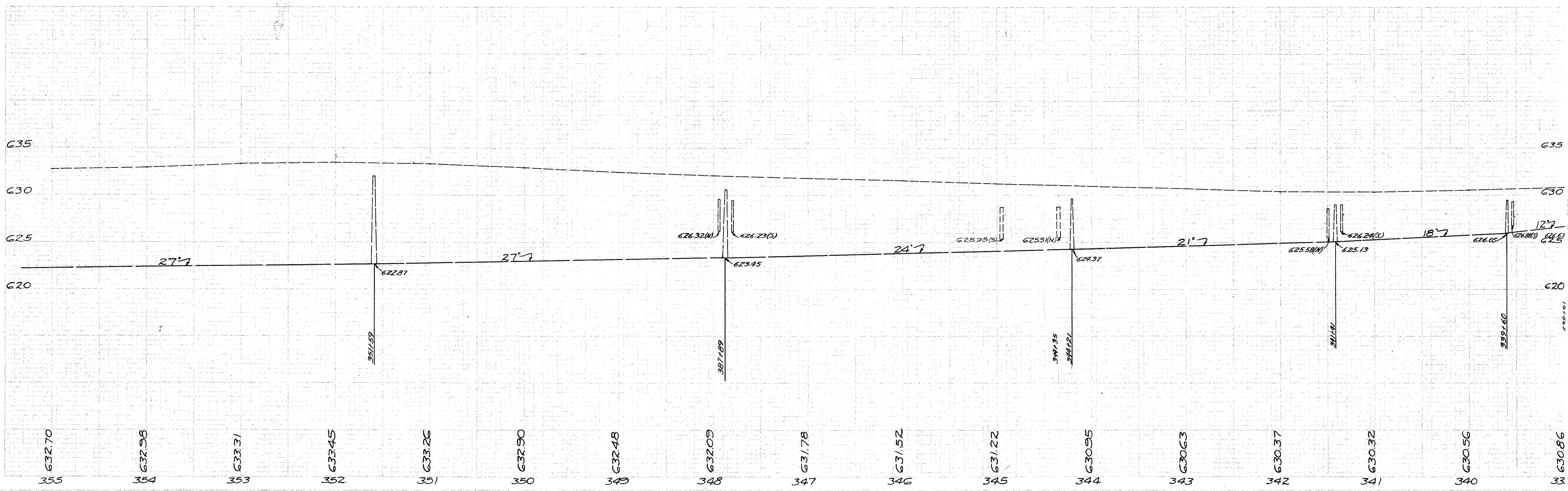
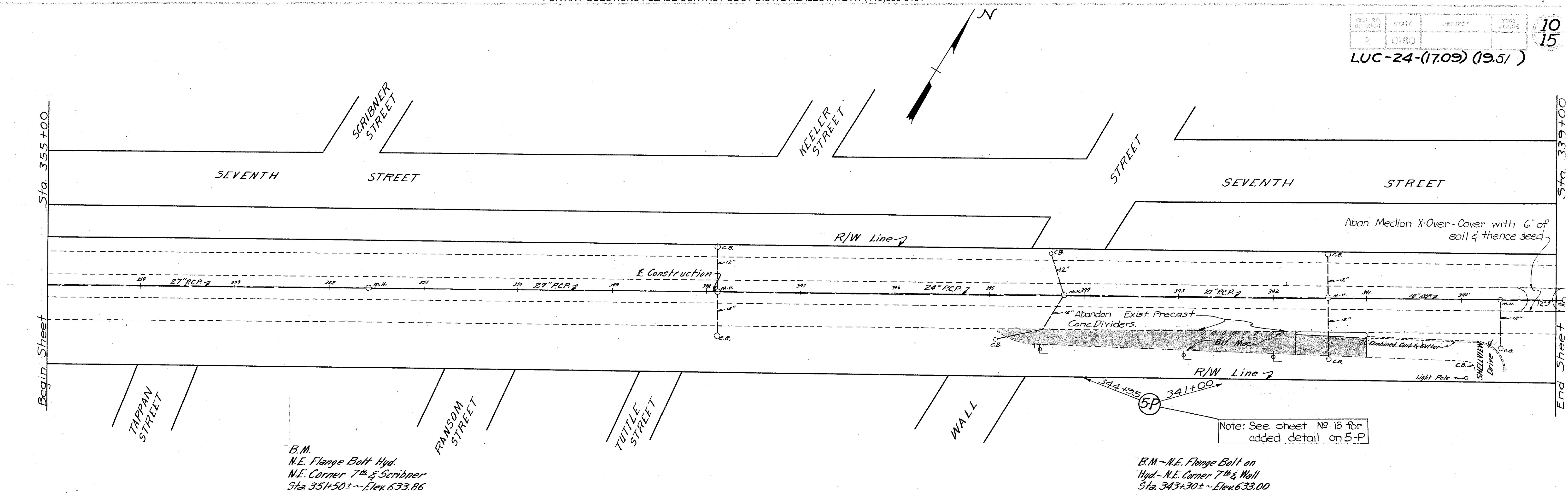
B.M. - S. Flange Bolt on
 Hyd. - 7th @ Holgate
 Elev. 634.11



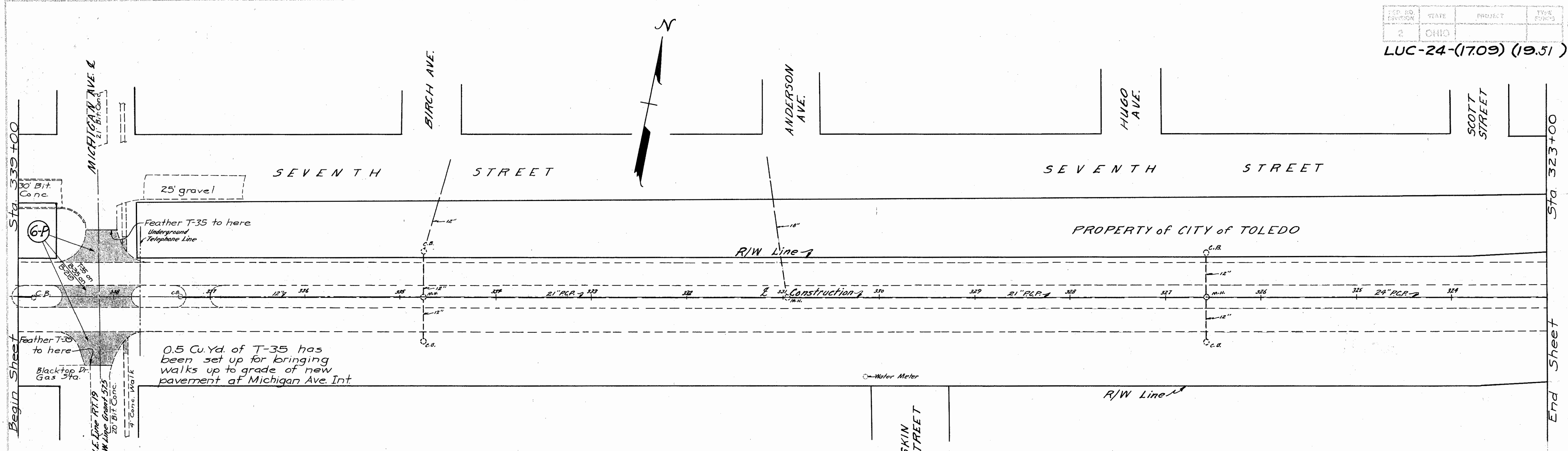
Sta. 382+00 to Sta. 370+00



Sta. 370+00 to Sta. 355+00



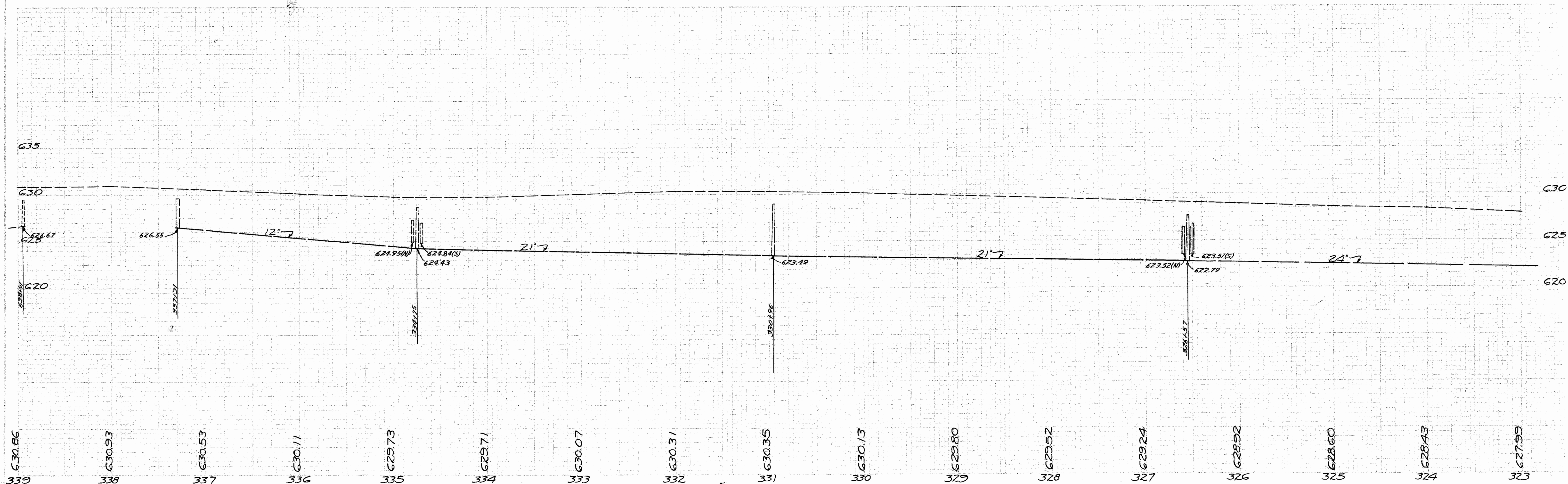
Sta. 355+00 to Sta. 339+00



0.5 Cu. Yd. of T-35 has been set up for bringing walks up to grade of new pavement at Michigan Ave. Int.

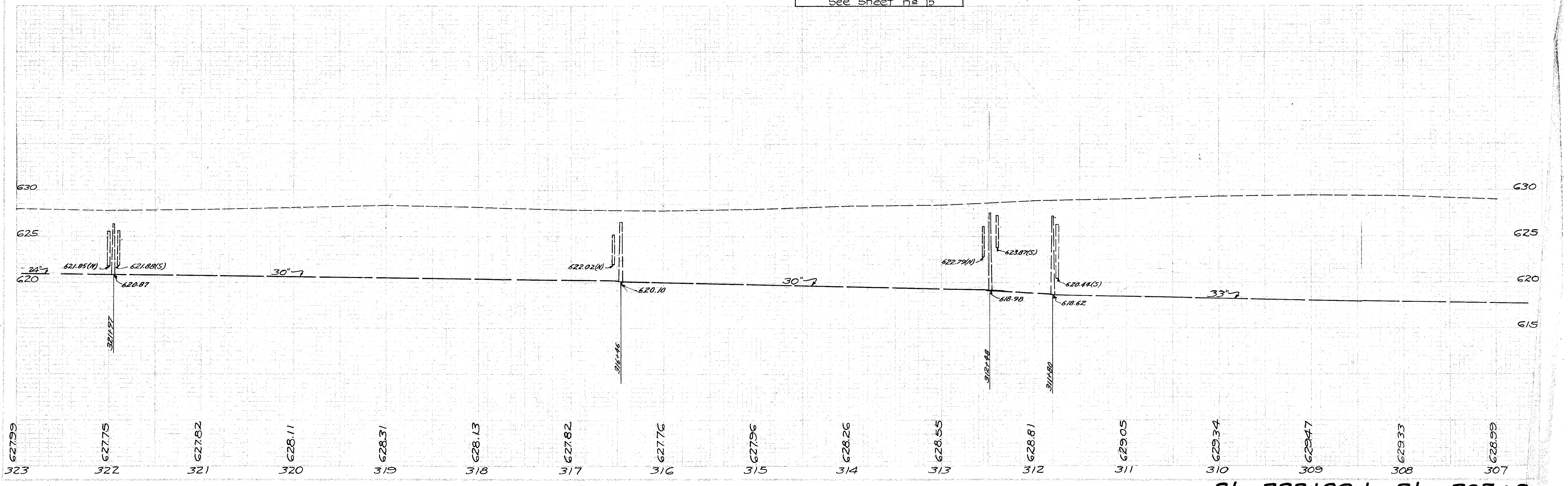
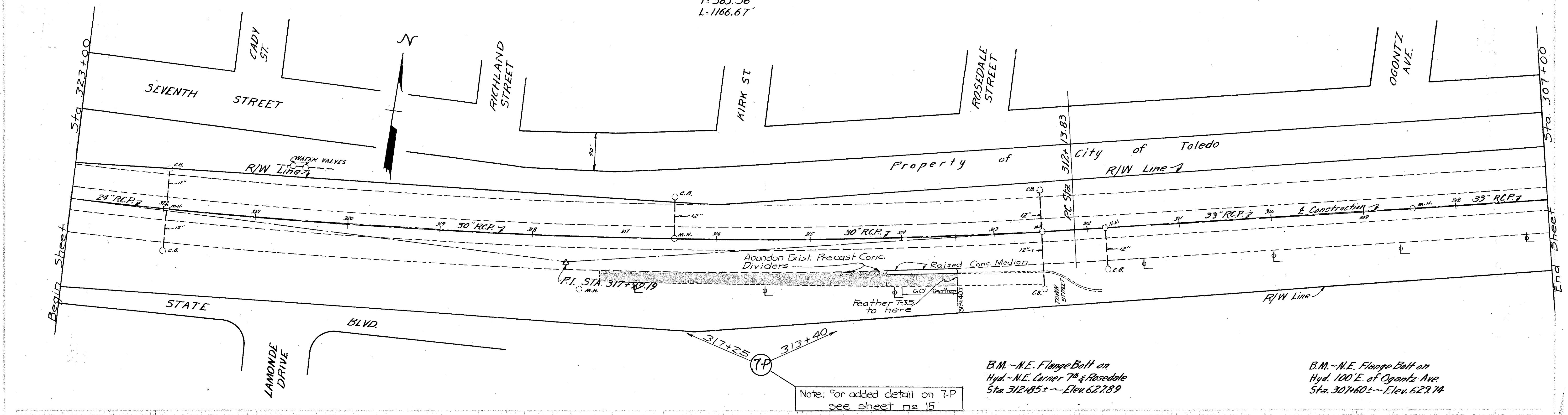
B.M. - N.E. Flange Bolt on Hyd. - N.E. Corner 7th & Michigan Sta. 337+75 ± - Elev. 633.25

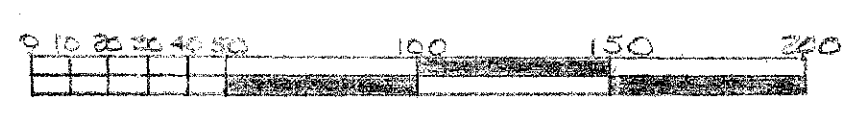
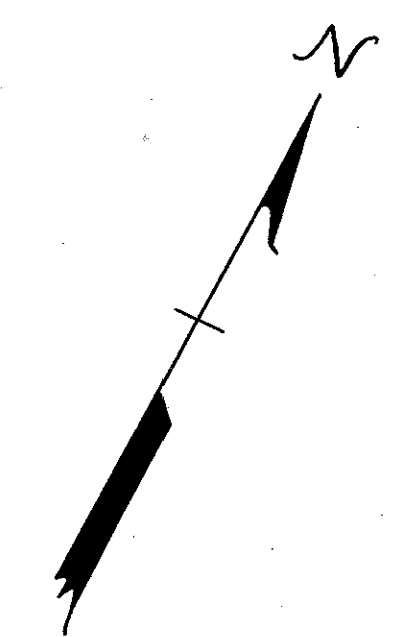
B.M. - S.E. Flange Bolt on Hyd. - N.W. Corner 7th & Scott Sta. 323+65 ± - Elev. 630.80



Sta. 339+00 to Sta. 323+00

CURVE DATA
 Δ = 11°-40'
 D = 1°
 E = 29.82'
 R = 5729.58'
 T = 585.36'
 L = 1166.67'

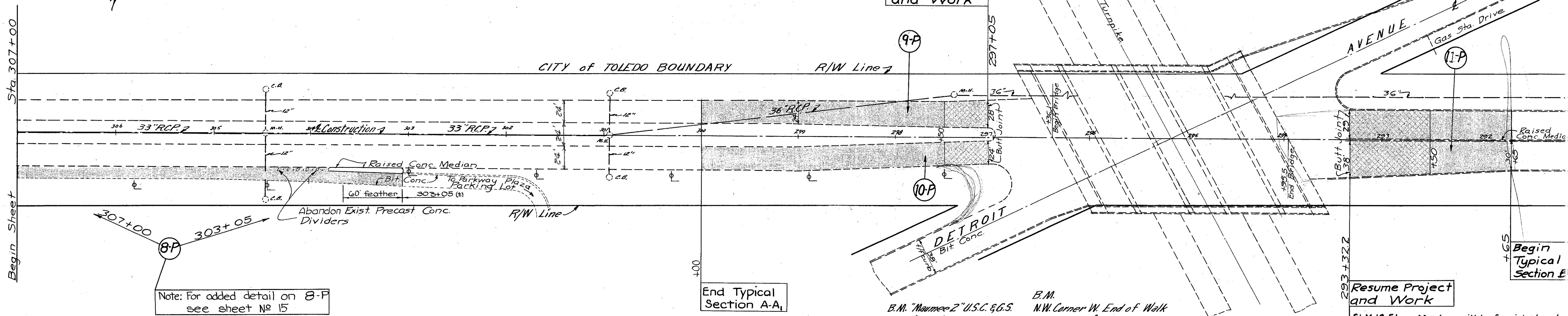




Marker will be furnished and erected on the left by State before acceptance of this improvement.

DU-1043(3)
SLM 19.41

Suspend Project and Work



Note: For added detail on 8-P see sheet No 15

End Typical Section A-A,

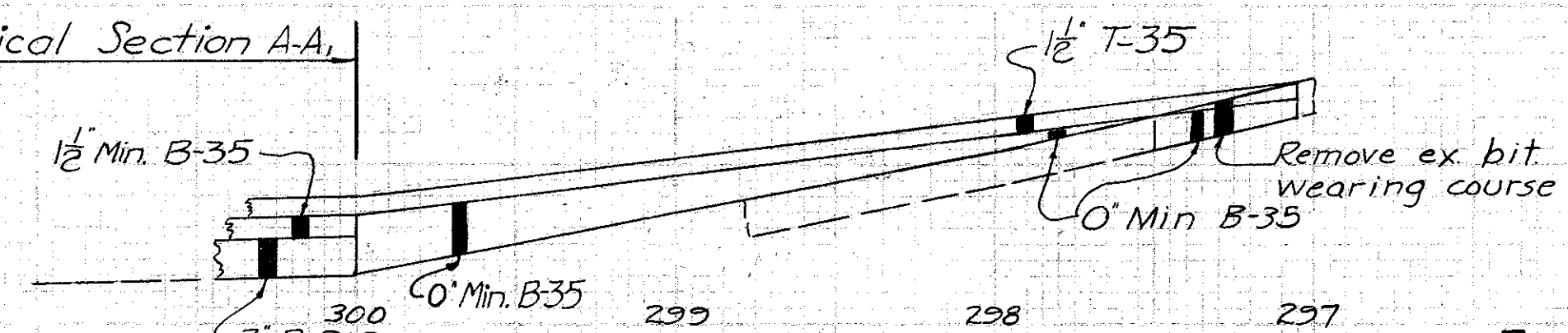
B.M. "Mauvee 2" U.S.C. & G.S.
B.M. (1953)
(Old) Elev. 626.13

B.M.
N.W. Corner W. End of Walk
on N. Side of Bridge Over
Turnpike.
Sta. 296+57± ~ Elev. 628.08

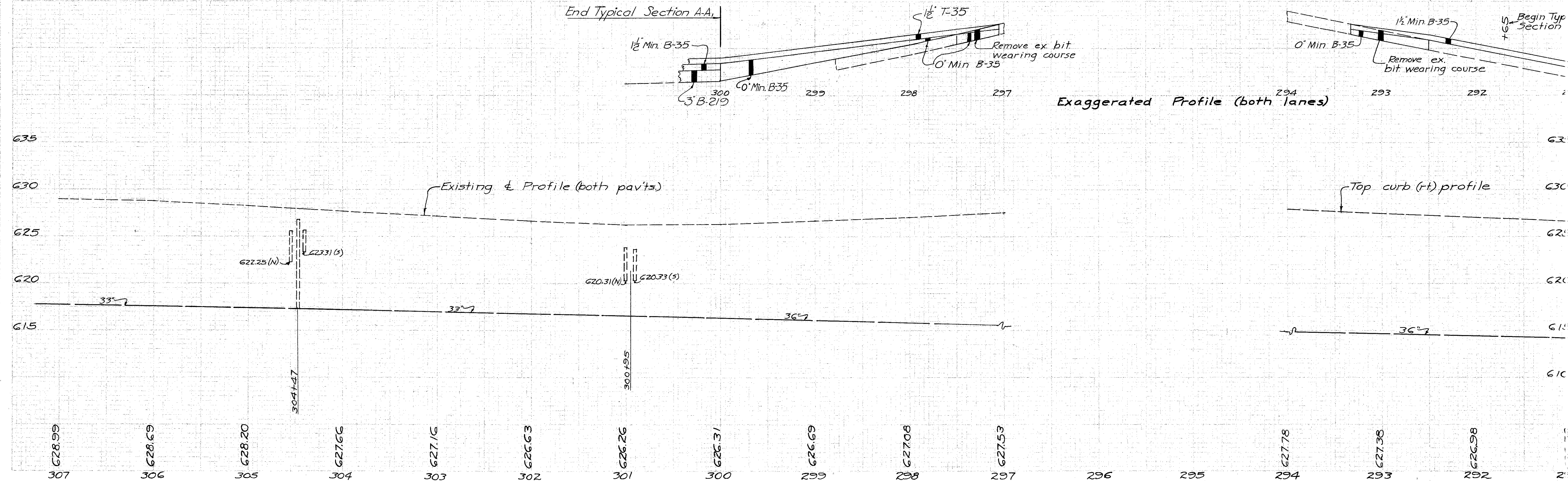
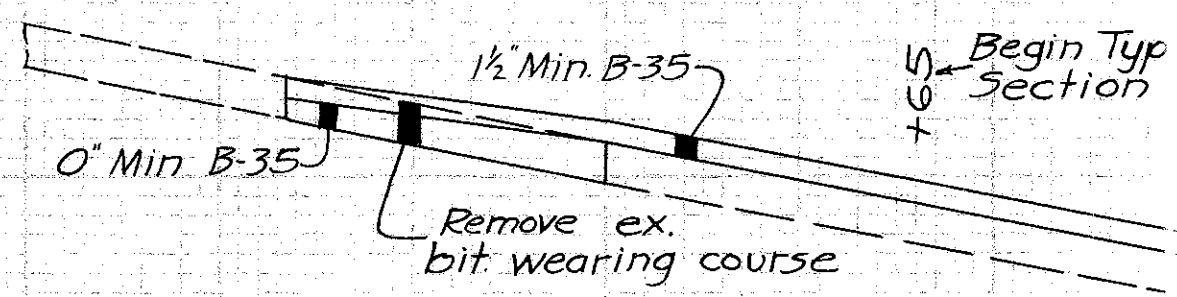
Resume Project and Work

SLM 19.51
DU-1120(2)
Marker will be furnished and erected on the right by State before acceptance of this improvement.

End Typical Section A-A,



Exaggerated Profile (both lanes)

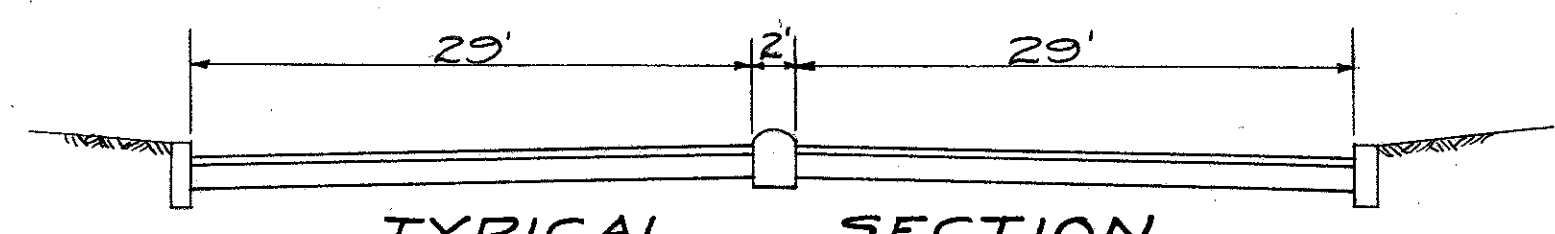
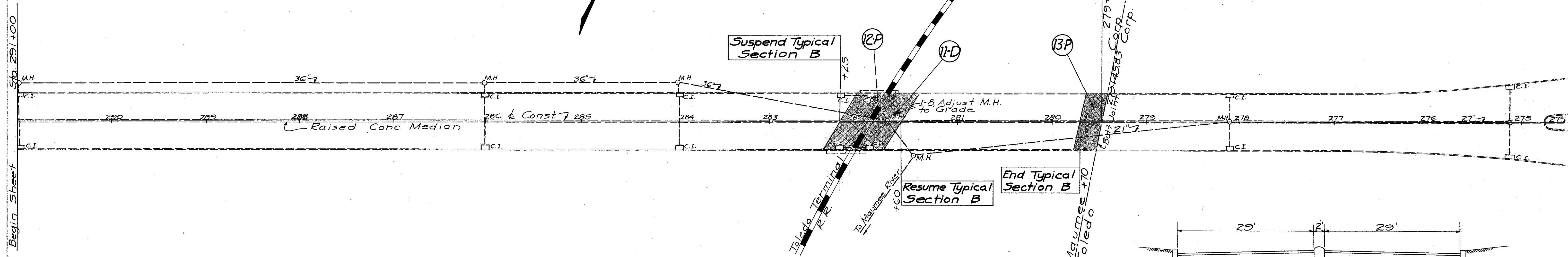


Sta. 307+00 to Sta. 291+00

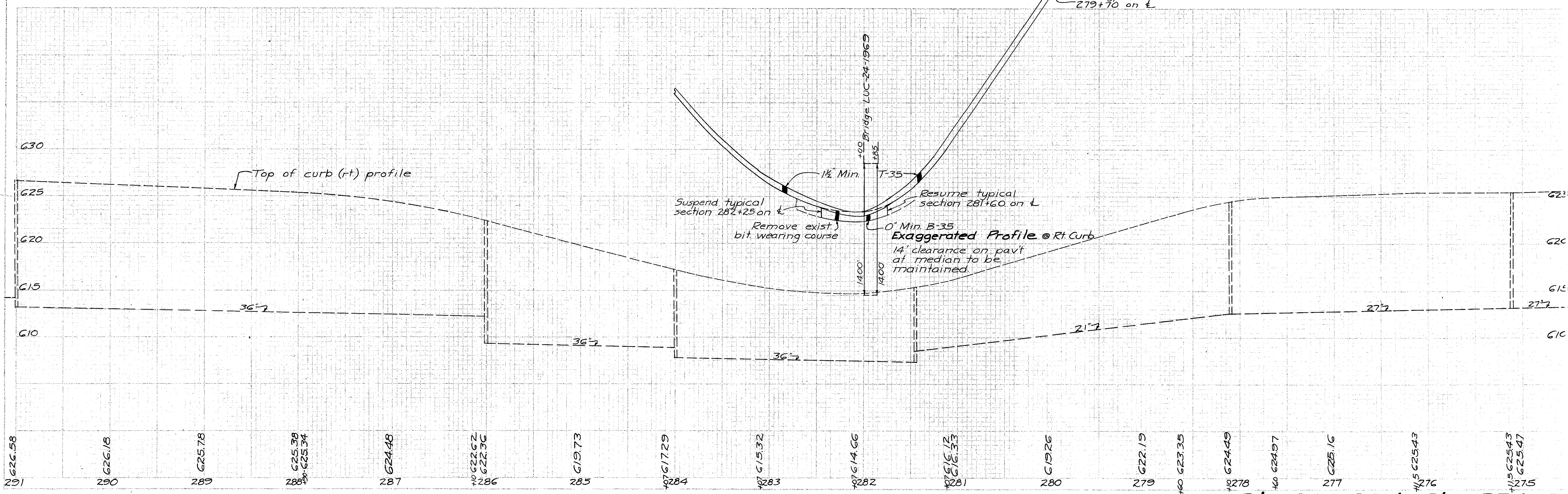
Marker will be furnished and erected by the State before acceptance of this improvement.

DU-1120(2)
SLM-19.77

End Project and Work



TYPICAL SECTION ADJOINING PAVEMENT
2 1/2" Bituminous Concrete on 8" Plain Concrete Base with 2" Raised Concrete Median and 5" Stone Curbs.



Sta. 291+00 to Sta. 274+50