

Luc. 24 19.50-19.56

STATE OF OHIO
DEPARTMENT OF HIGHWAYS
RIGHT OF WAY PLANS
TOLEDO-DETROIT ROAD
S.H. 11 SEC. TOLEDO (PT.)
LUCAS COUNTY
ADAMS TOWNSHIP
1934

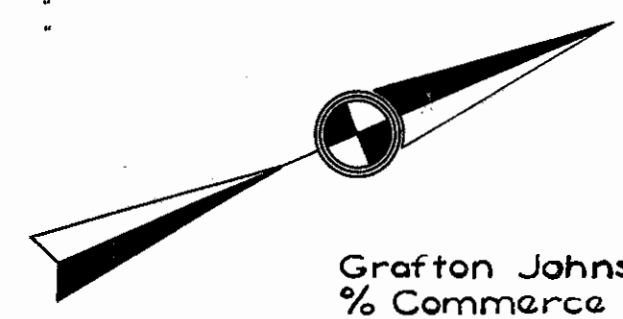
5021mad
June 1997

R-30274
1/3
C-8

FOR ANY QUESTIONS PLEASE CONTACT ODOT DIST. 2 REALSTATE AT (419)353-8131

Scanned June 1941

REFERENCES
Sta. 0+00 Canal Base Line
55.65 N.E. to tack in T.P.
51.92 N.W. to tack in T.P.
76.64 S.W.



Grafton Johnson
% Commerce Guardian Bk.
Toledo, O.

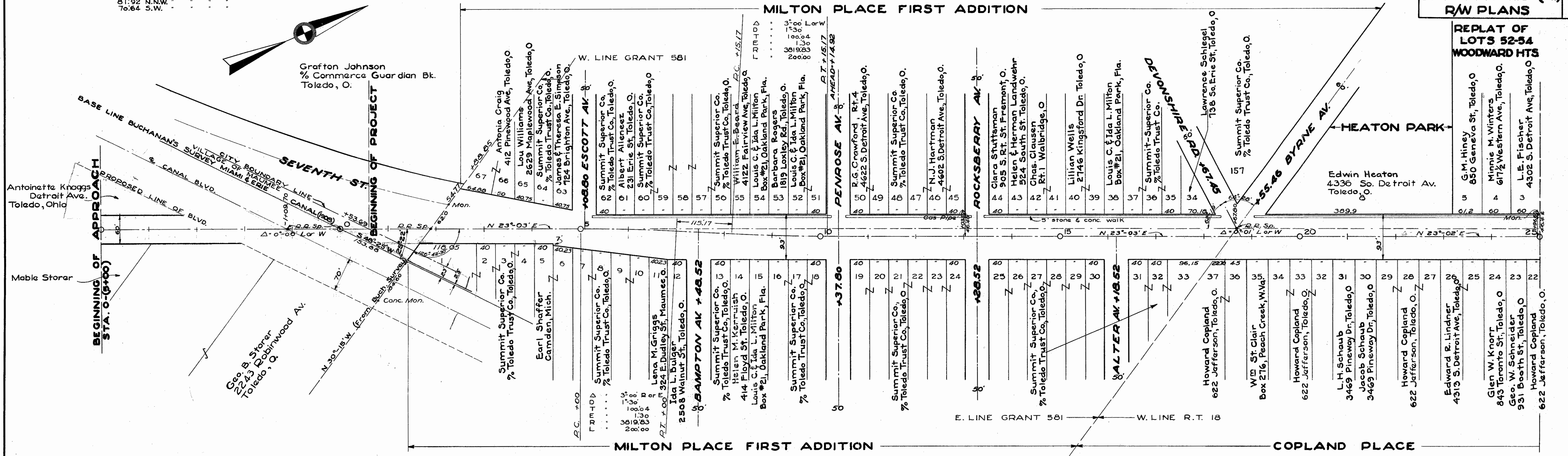
LUCAS COUNTY
S.H. II SEC. TOLEDO (Pt.)
R/W PLANS

2
3

REPLAT OF
LOTS 52-54
WOODWARD HTS

G. M. Hiney
850 Geneva St., Toledo, O.
Minnie M. Winters
617 1/2 Western Ave., Toledo, O.
L. E. Fischer
4302 S. Detroit Ave., Toledo, O.

Edwin Heaton
4336 So. Detroit Av.
Toledo, O.



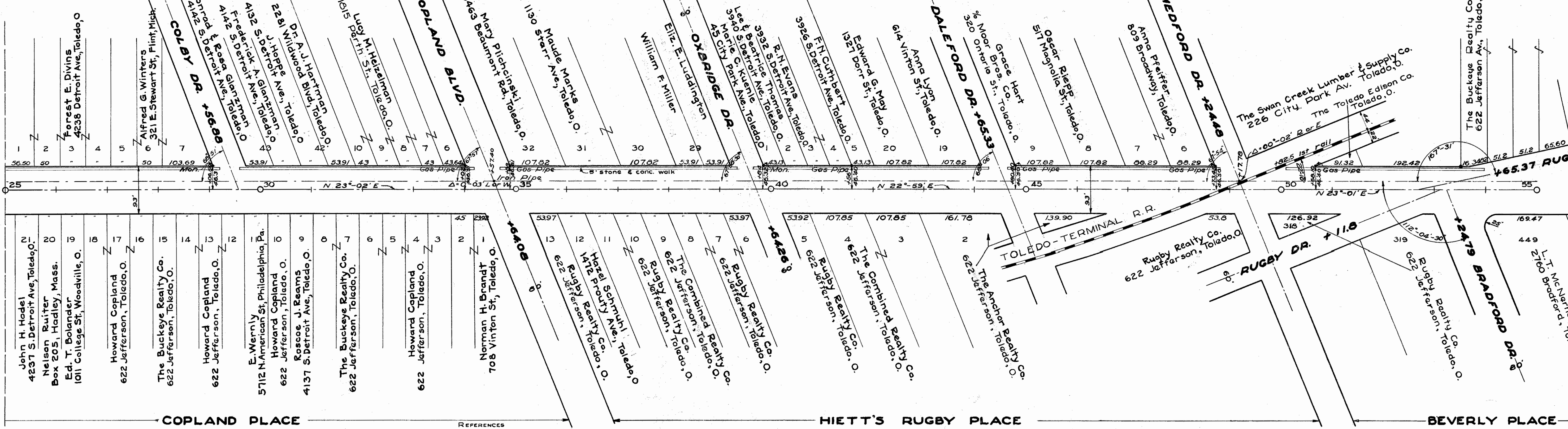
REPLAT OF LOTS
50-51-52-53
WOODWARD HTS.

WOODWARD HTS. HEIZELMAN'S
SUB. OF LOTS 404
WOODWARD HTS.

WOODWARD HTS.

RESUB. OF LOTS
21-22
WOODWARD HTS.

WOODWARD HTS.



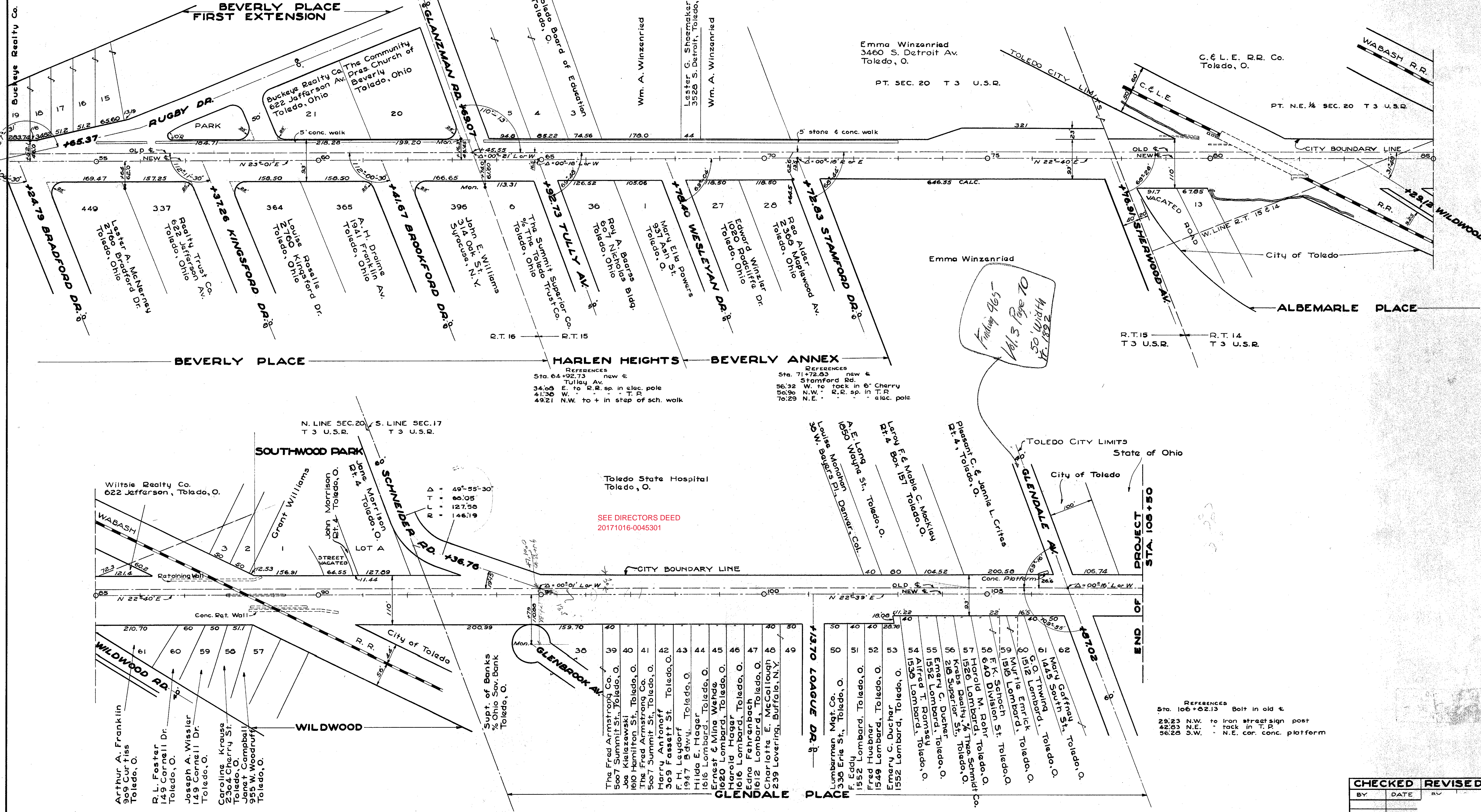
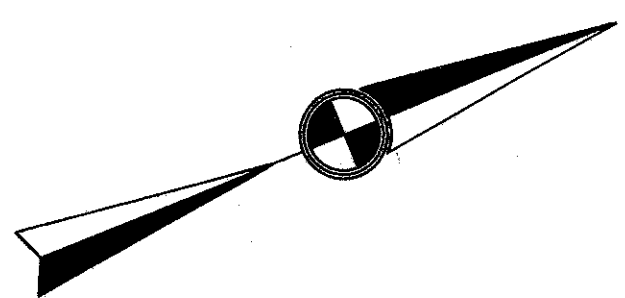
COPLAND PLACE

HIATT'S RUGBY PLACE

BEVERLY PLACE

REFERENCES
Sta. 34+57.40 I. Pipe on old &
36.05 Copland Blvd.
34.07 S.W. to tack in T.P.
42.35 N.W.

REFERENCES
Sta. 63+45.55 old &
46.09 N.W. to tr. light pole
42.34 S.W. : mon.
53.75 E : R.R. sp. in elec. pole



Findings 9/6/57
Vol. 3 Page 70
50' width
11-1892

REFERENCES
Sta. 64+92.73 new &
Tully Av.
34.09 E. to R.R. sp. in elec. pole
41.30 W. : T.P.
49.21 N.W. to + in step of sch. walk

REFERENCES
Sta. 71+72.83 new &
Stamford Rd.
56.32 W. to tack in 6' Cherry
50.96 N.W. : R.R. sp. in T.P.
70.29 N.E. : elec. pole

N. LINE SEC. 20 T 3 U.S.R.
S. LINE SEC. 17 T 3 U.S.R.

SEE DIRECTORS DEED
20171016-0045301

REFERENCES
Sta. 106+62.13 Bolt in old &
29.23 N.W. to iron street sign post
42.63 N.E. : tack in T.P.
56.20 S.W. : N.E. cor. conc. platform

- Arthur A. Franklin Toledo, O.
- R.L. Foster 149 Cornell Dr. Toledo, O.
- Joseph A. Wissler 149 Cornell Dr. Toledo, O.
- Caroline Krause 2304 Cherry St. Toledo, O.
- Janet Campbell 955 W. Woodruff Toledo, O.
- Wilsie Realty Co. 622 Jefferson, Toledo, O.
- Grant Williams
- John Morrison Rt. 4 Toledo, O.
- John Morrison O. N. Robertson Toledo, O.
- Supt. of Banks Ohio Sav. Bank Toledo, O.

- The Fred Armstrong Co. 5007 Summit St., Toledo, O.
- Joe Kieliszewski 1610 Hamilton St., Toledo, O.
- The Fred Armstrong Co. 5007 Summit St., Toledo, O.
- Harry Antonoff Toledo, O.
- 309 Fassett St. Toledo, O.
- F.H. Leydoff 1947 54th St., Toledo, O.
- Hilde E. Hager 1516 Lombard, Toledo, O.
- Ernest & Ming Wehde 1620 Lombard, Toledo, O.
- Harold Hager 1616 Lombard, Toledo, O.
- Edna Fehrenbach 1612 Lombard, Toledo, O.
- Charlotta E. McCollough 239 Lovering, Buffalo, N.Y.
- Lumbermen Mgt. Co. 336 Erie St., Toledo, O.
- F. Eddy 1552 Lombard, Toledo, O.
- Fred Huebner 1549 Lombard, Toledo, O.
- Emery C. Ducher 1552 Lombard, Toledo, O.
- Alfred T. Ramsey 1536 Lombard, Toledo, O.
- F.K. Schenck St. Toledo, O.
- Harold M. Bohr 9640 Lombard, Toledo, O.
- 1526 Lombard, Toledo, O.
- Krebs Realty 1/2 Theo. Schmidt Co. 218 Superior St., Toledo, O.
- Emery C. Ducher 1552 Lombard, Toledo, O.
- 1536 Lombard, Toledo, O.
- 1545 Lombard, Toledo, O.
- Mary South St. Toledo, O.
- G.O. Truwing 1445 Lombard, Toledo, O.
- Murrie Emrick Toledo, O.
- 1512 Lombard, Toledo, O.
- F.K. Schenck St. Toledo, O.
- 1526 Lombard, Toledo, O.
- Krebs Realty 1/2 Theo. Schmidt Co. 218 Superior St., Toledo, O.
- Emery C. Ducher 1552 Lombard, Toledo, O.
- 1536 Lombard, Toledo, O.
- 1545 Lombard, Toledo, O.
- Mary South St. Toledo, O.
- G.O. Truwing 1445 Lombard, Toledo, O.
- Murrie Emrick Toledo, O.
- 1512 Lombard, Toledo, O.

BY	DATE	REVISED