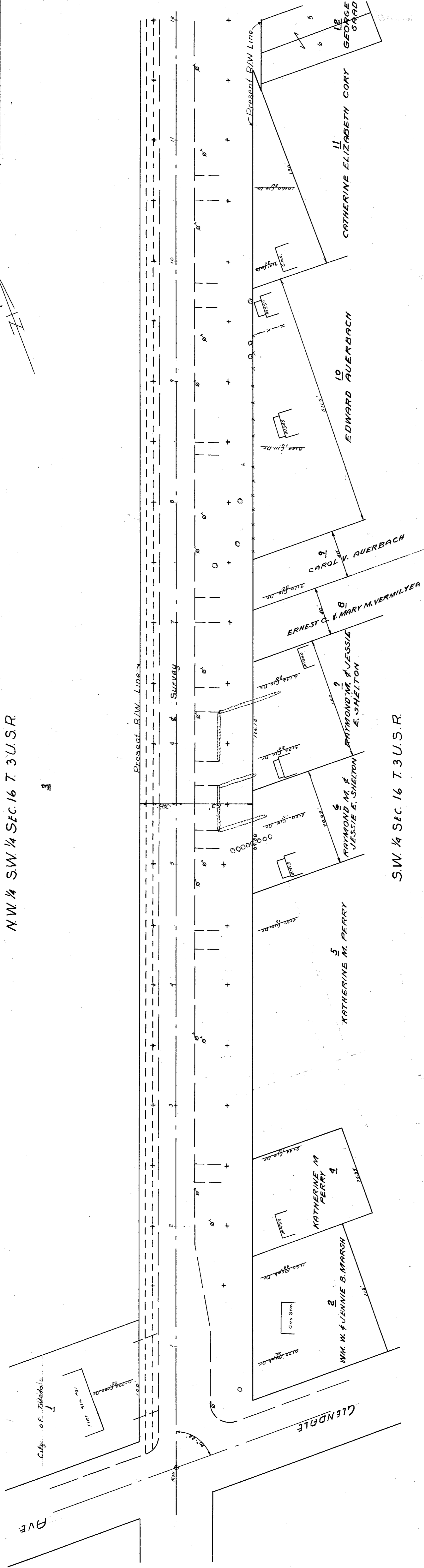


LUCAS COUNTY
LUC-25 (484-6.68)
R/W PLANS
Drawn By H.C.D. Date 7-20-50
Revised By H.C.D.
Length of Project 1.58 Miles

1
4

STATE of OHIO
NW 1/4 SW 1/4 SEC. 16 T. 3 U.S.R.

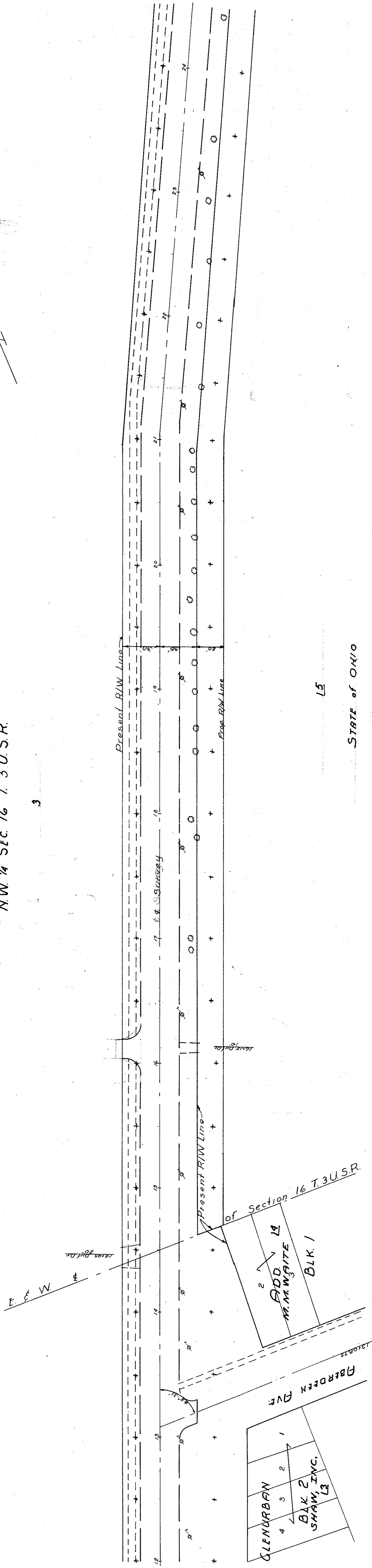
3



STATE of OHIO
NW 1/4 SEC. 16 T. 3 U.S.R.

STATE of OHIO
NW 1/4 SEC. 16 T. 3 U.S.R.

3



STATE of OHIO

15

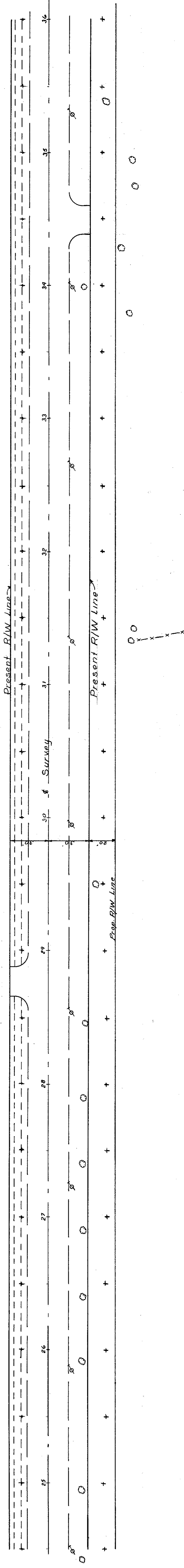
LUCAS COUNTY
 LUC - 25 (4.84 - 6.68)
 R/W PLANS

Drawn By H.C.D. Date 7-20-50
 Revised Length of Project 1.58 Miles

2
4

STATE of OHIO
 NW 1/4 Sec 16 T 3 U.S.R.

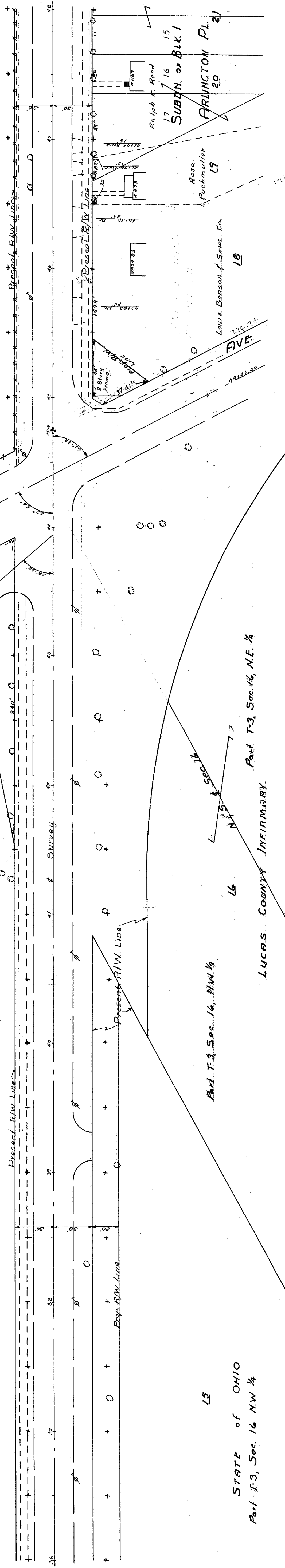
3



15

STATE of OHIO
 NW 1/4 Sec 16 T 3 U.S.R.

3



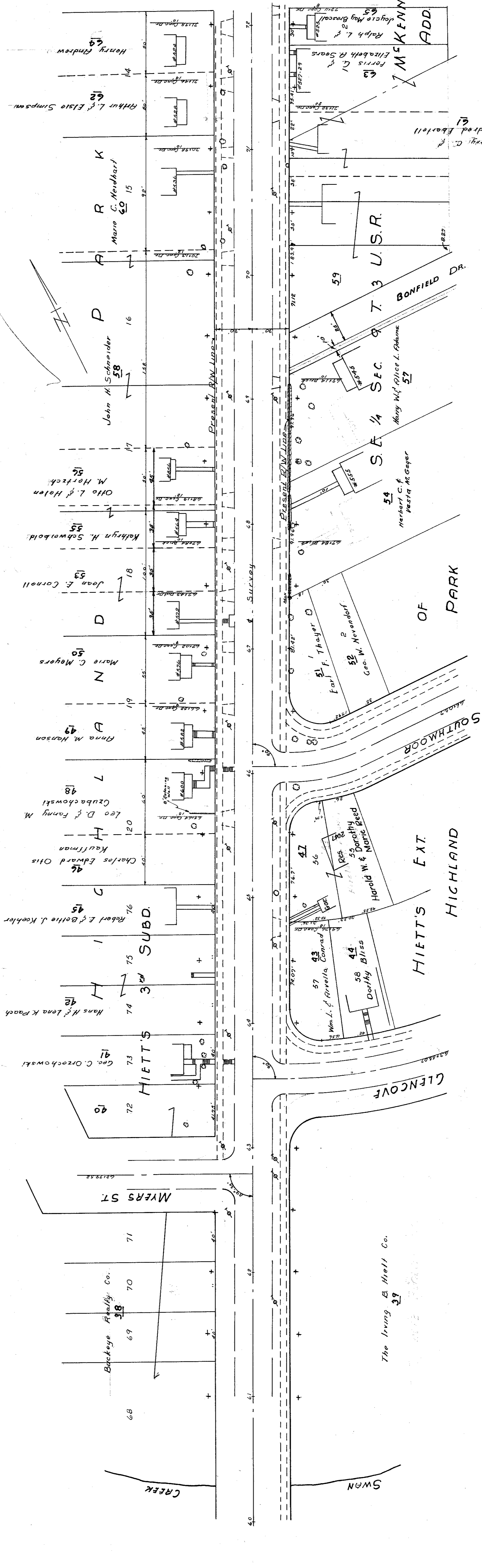
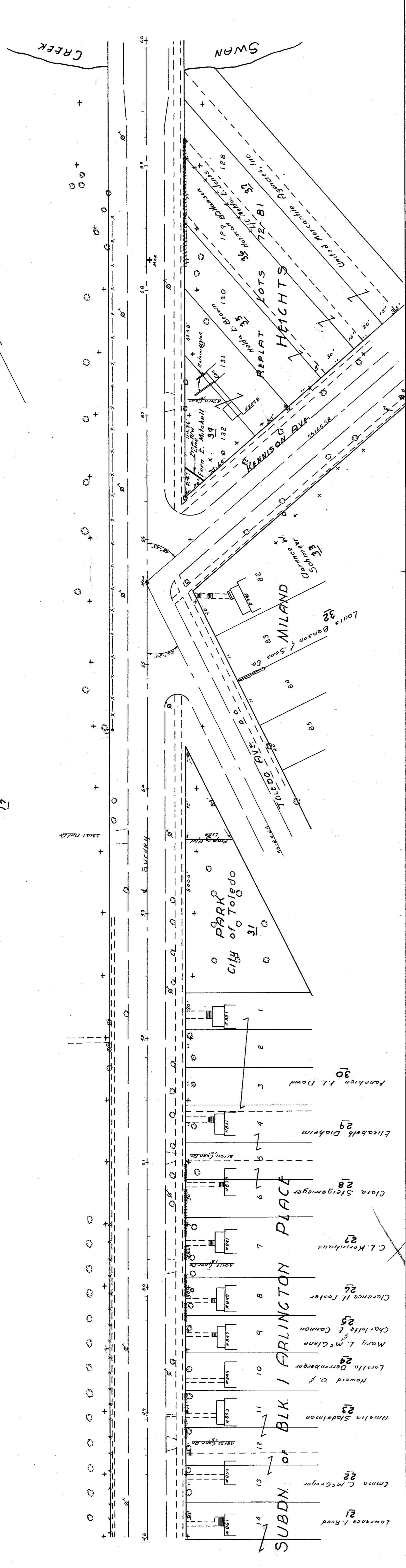
15

STATE of OHIO
 Part T-3, Sec. 16 NW 1/4

LUCAS COUNTY
 LUC-25 (484-6.60)
 R/W PLANS
 Drawn By H.C.D. Date 7-20-50
 Revised Length of Project 1.58 Miles

STATE OF OHIO
 SE 1/4 SEC 9 T 3 U.S.R.

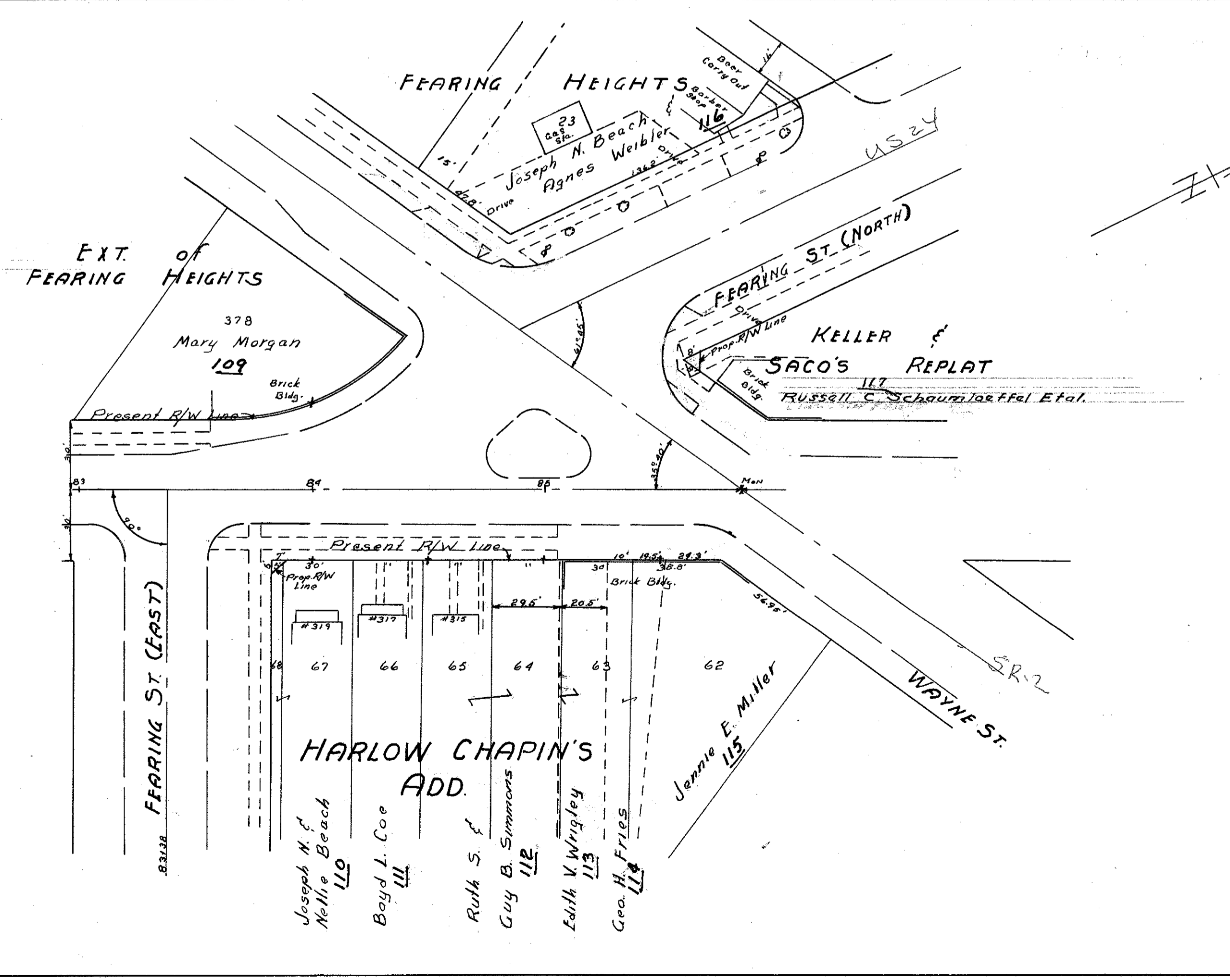
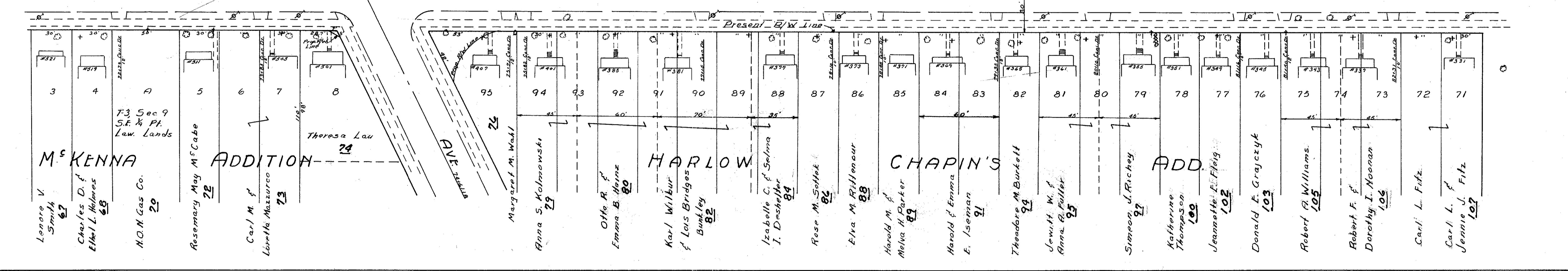
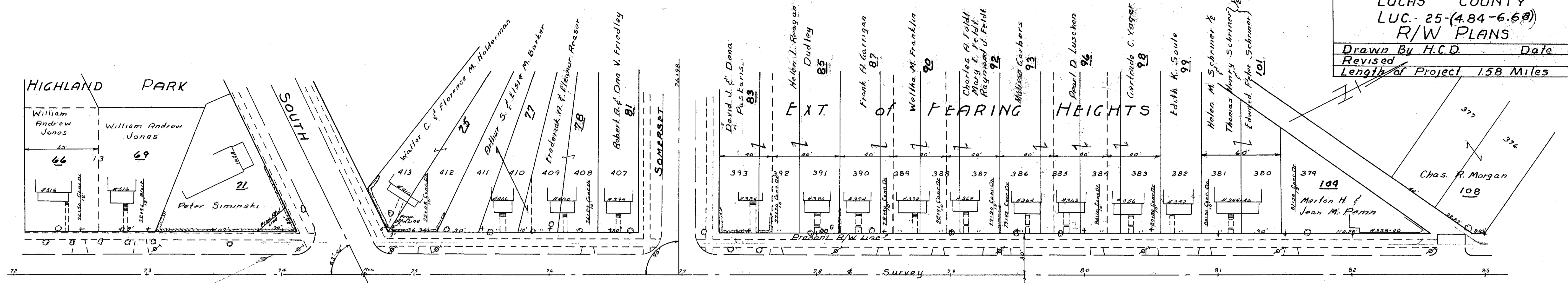
17



3
4

3
4

Approved
JAN 10 1947



FOR ANY QUESTIONS PLEASE CONTACT ODOT DIST. 2 REALSTATE AT (419)353-8131