

STATE OF OHIO
DEPARTMENT OF HIGHWAYS

FED. RD. DIVISION	STATE	PROJECT	TYPE FUNDS
2	OHIO		1951

1
12

LUCAS COUNTY
LUC-24-(29.17-30.28)

LUC-24-(29.17-30.28)

LUCAS COUNTY
WASHINGTON TOWNSHIP
CITY OF TOLEDO

CONVENTIONAL	SIGNS
COUNTY LINE	-----
TOWNSHIP LINE	-----
SECTION LINE	-----
CORPORATION LINE	-----
FENCE LINE	-x-x-x-x-
CENTER LINE	o o o o o
POLE LINE	o o o o o
RAILROAD	o o o o o
GUARD RAIL	o o o o o

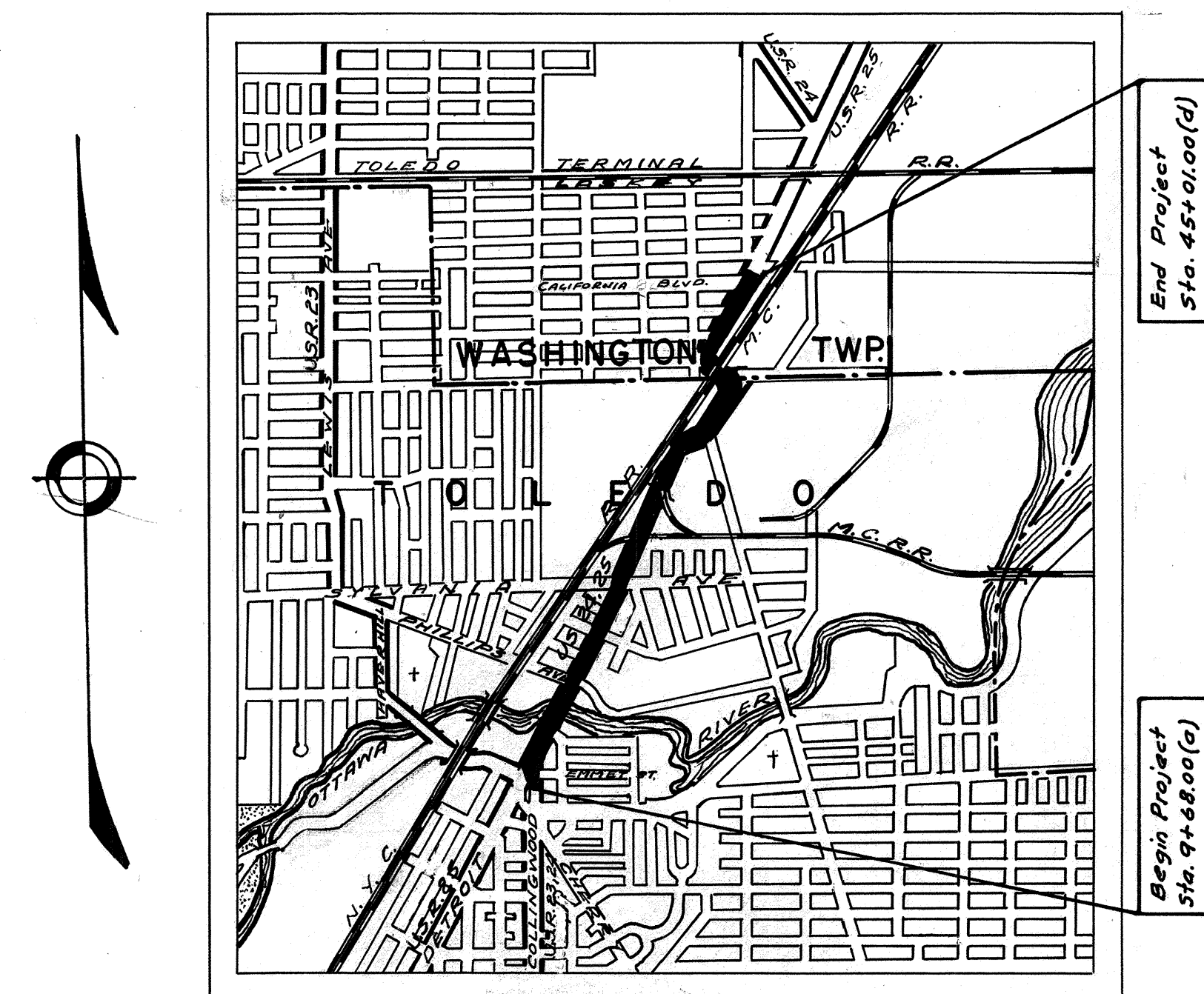
INDEX OF SHEETS

TITLE SHEET	1
TYPICAL SECTIONS	2
TABLES	384
GENERAL NOTES	4
PAVEMENT COMPUTATIONS	4
GENERAL SUMMARY	4
PLAN & PROFILE	5-12

LINE DATA

BEGIN PROJECT AND WORK (Municipal-City of Toledo) Sta. 9+68.00(a)
 From Sta. 9+68.00(a) to Sta. 13+15.60(d) Back=Sta. 4+08.00(b) Ahead = 347.60 Lin. Ft.
 From Sta. 4+08.00(b) to Sta. 14+19.00(b) Back=Sta. 18+89.00(c) Ahead = 1,011.00 Lin. Ft.
 From Sta. 18+89.00(c) to Sta. 32+73.10(c) Back=Sta. 0+00.00(d) Ahead = 1,384.10 Lin. Ft.
 From Sta. 0+00.00(d) to Sta. 31+16.50(d) (City of Toledo Corporation Line) = 3,116.50 Lin. Ft.
 Gross Length of Work Municipal = 5,859.20 Lin. Ft.
 Deduct for Sta. Eq. & R.R. X-ings (2.97+12.4+12.2) = 27.57 Lin. Ft.
 City of Toledo Corporation Line Sta. 31+16.50 (d) Net Length of Work, Munic. = 5,831.63 Lin. Ft.
 End Project and Work (Rural) Sta. 45+01.00 (d) Net Length of Work, Rural = 1,384.50 Lin. Ft.

Total Net Length Municipal = 5,831.63 Lin. Ft. or 1.104 Miles
 Total Net Length Rural = 1,384.50 Lin. Ft. or 0.262 Miles
 Total Net Length of Project and Work = 7,216.13 Lin. Ft. or 1.366 Miles



DELIVERY POINT TOLEDO AVERAGE HAUL 3/4 MI.

LOCATION PLAN

Scale 3"=1 Mi.

PORTION TO BE IMPROVED	=====
STATE HIGHWAYS	=====
OTHER ROADS	=====
DETOURS	NONE

SCALES

PLAN	1"=40 & 1"=20
PROFILE HORIZONTAL	1"=40
PROFILE VERTICAL	1"=5'
CROSS SECTIONS	NONE

The Standard Specifications of the State of Ohio, Department of Highways, including changes and Supplemental Specifications listed in the proposal shall govern this Project.

The Right of way necessary for this improvement will be provided by the State of Ohio.

I hereby approve these plans and declare that the making of this improvement will not require the closing to traffic of the Highway, and that provisions for the maintenance and safety of traffic will be as set forth on the plans and estimates.

Approved: George W. Rubin
 Date: 8-3-50 Division Deputy Director

Approved: _____
 Date: _____ Chief Engineer, Bureau of Maintenance

Approved: Richard Orth
 Date: 8-15-50 Chief Engineer, Bureau of Bridges & R.R. Crossings

Approved: W. J. Pothmann
 Date: 8-18-50 Chief Engineer, Bureau of Location & Design

Approved: V. J. Magallon
 Date: 8-22-50 First Asst. Director & Chief Engineer

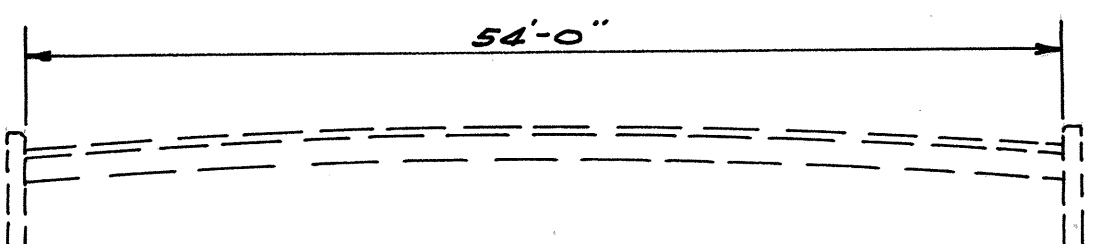
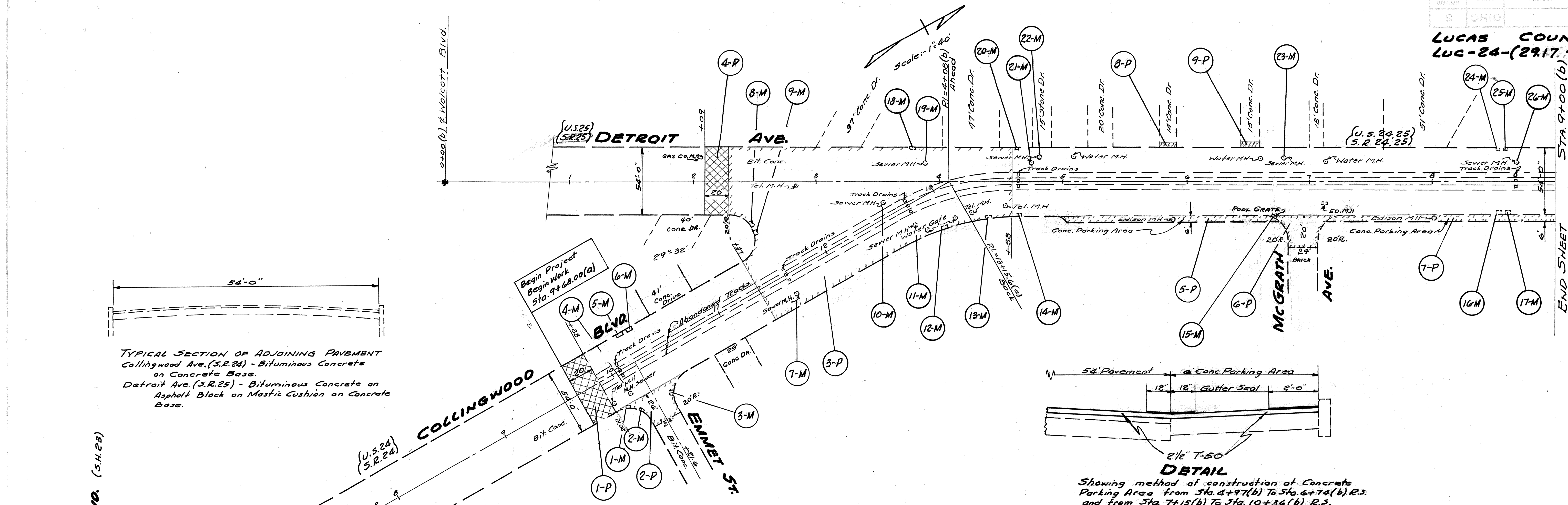
Approved: W. J. Waller
 Date: 8-22-50 Director of Highways

352

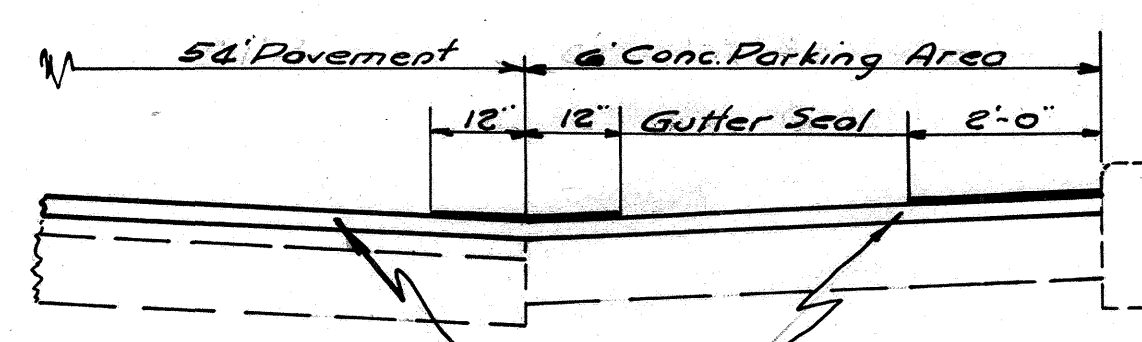
FILE	LUCAS COUNTY
No.	SEC. LUC-24-(29.17-30.28)
352	DATE OF LETTING
	CONTRACT NO.

SUPPLEMENTAL SPECIFICATIONS		STANDARD DRAWINGS	
T-171.19	Rev. 7-31-50	I-12	3-15-48
31	6-13-49		

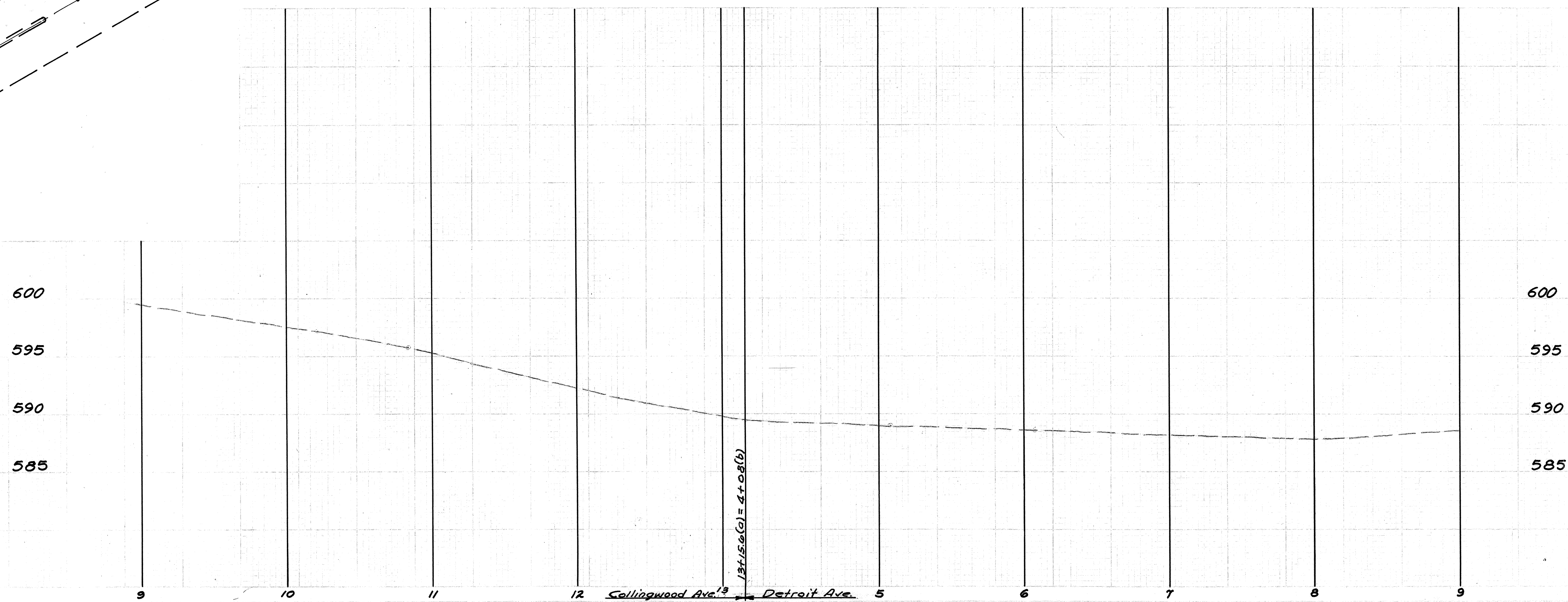
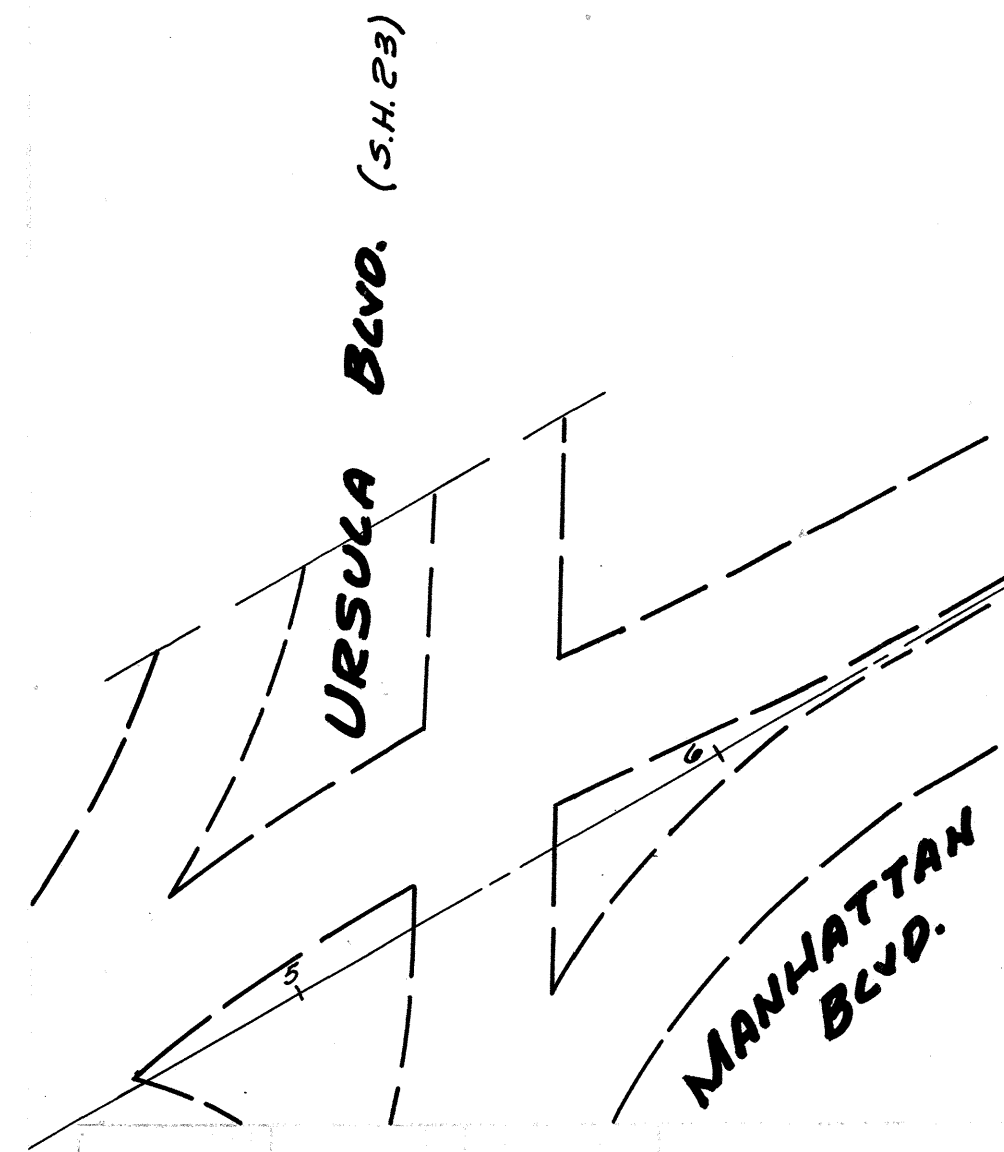
CONSTRUCTION BUREAU
 JUN 28 1955
 GROUND PHOTOLAB



TYPICAL SECTION OF ADJOINING PAVEMENT
Collingwood Ave. (S.R. 24) - Bituminous Concrete
on Concrete Base.
Detroit Ave. (S.R. 25) - Bituminous Concrete on
Asphalt Block on Mastic Cushion on Concrete
Base.



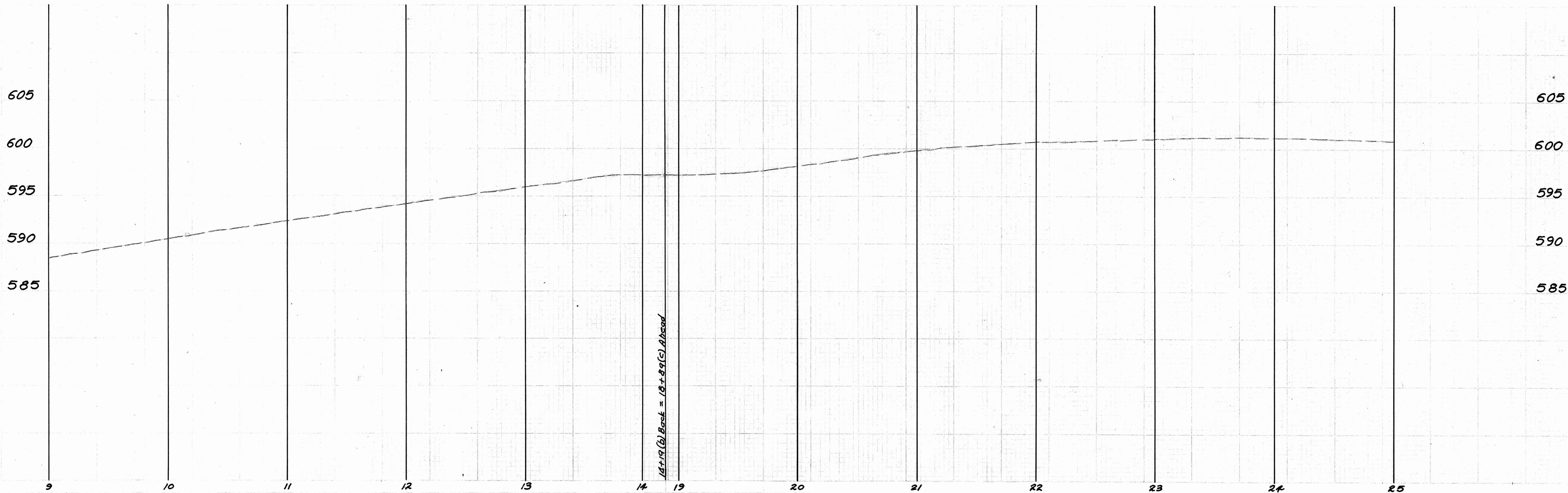
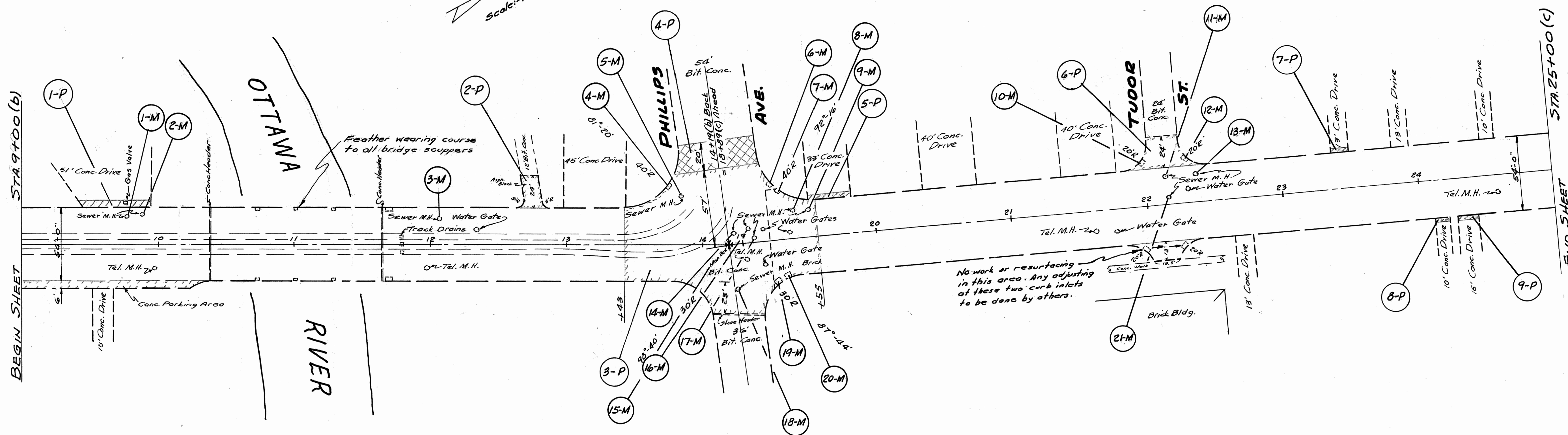
DETAIL
Showing method of construction of Concrete
Parking Area from Sta. 4+97(b) To Sta. 6+74(b) R.S.
and from Sta. 7+15(b) To Sta. 10+36(b) R.S.



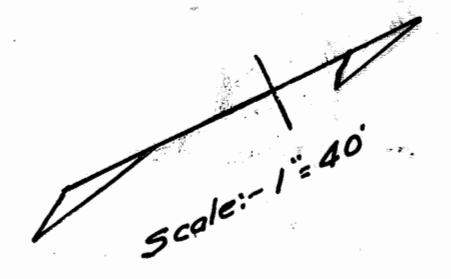
END SHEET
STA 9+00(b)

DATA ON EXISTING STRUCTURE
 Bridge No. LU-24-282
 Span - 36'
 Roadway - 54'
 Type - Conc. Arch., Spandrel Fill.
 Condition - Good
 Maintenance - By City of Toledo

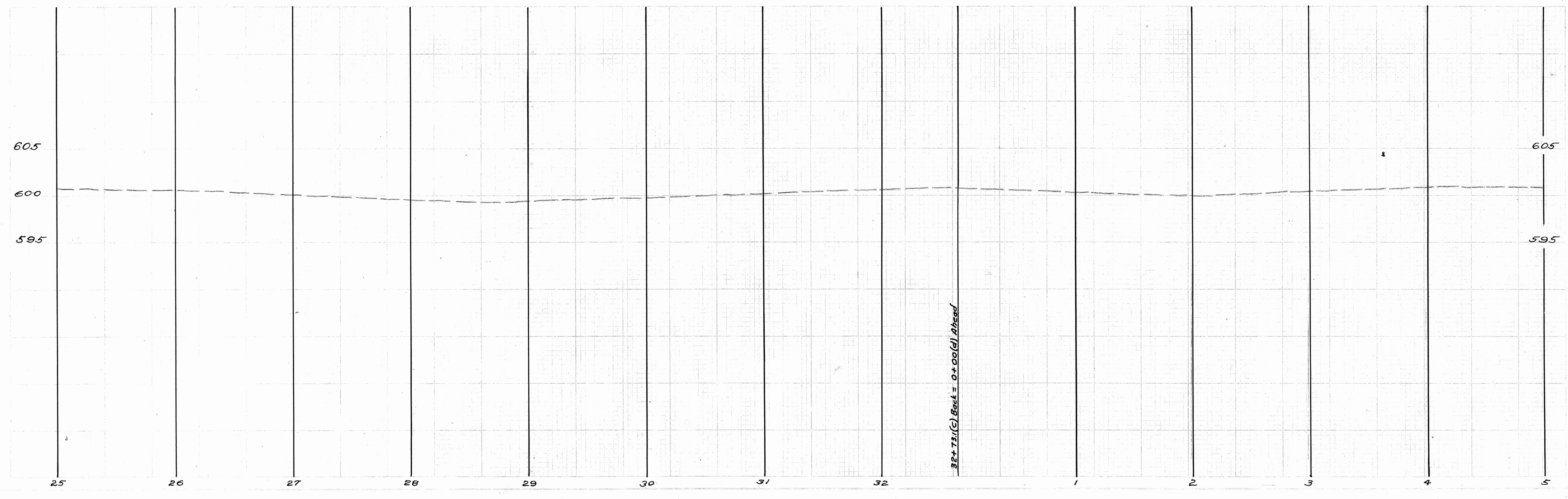
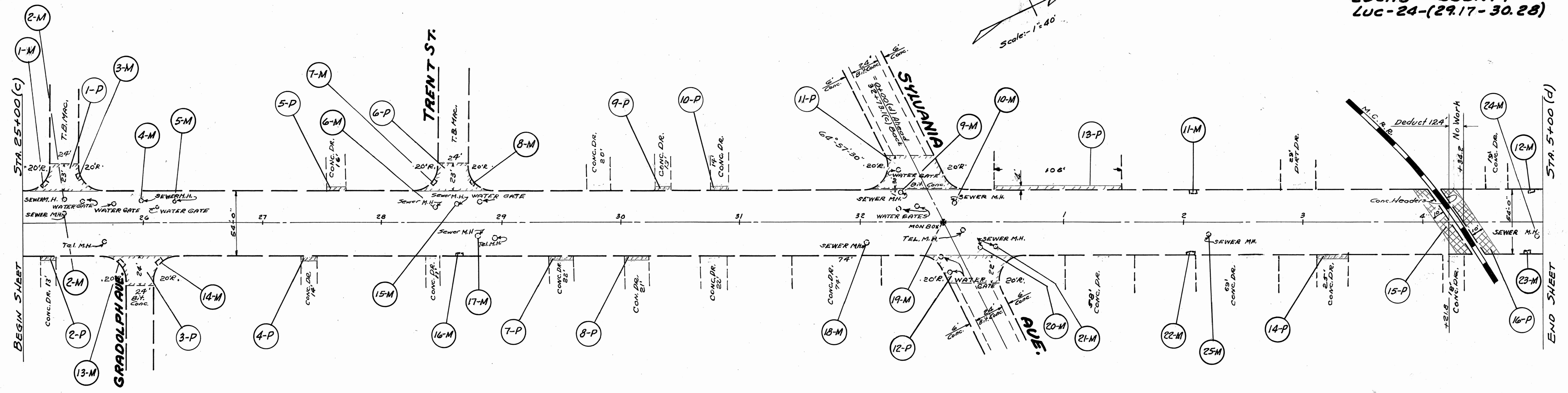
Scale: 1"=40'



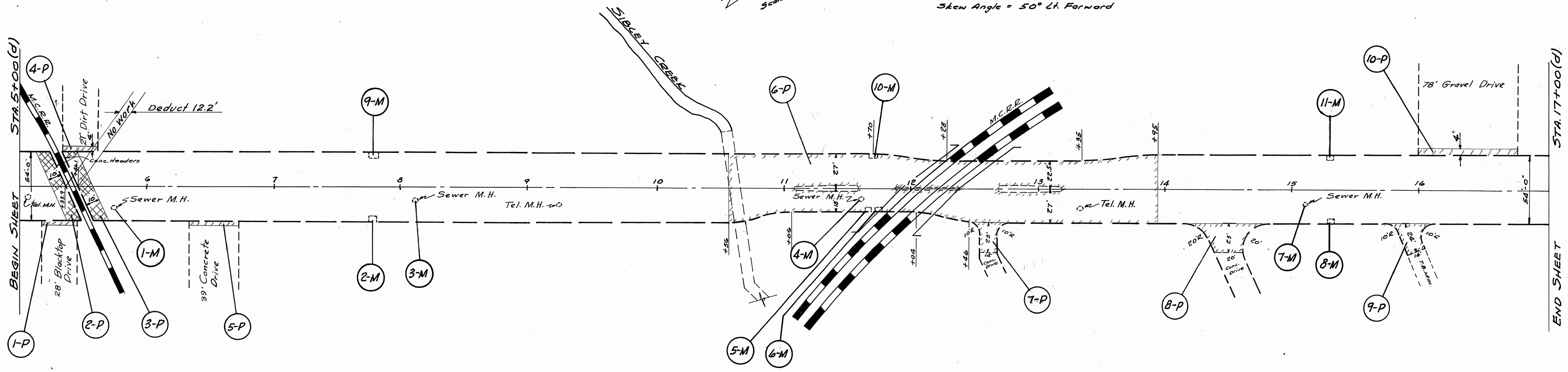
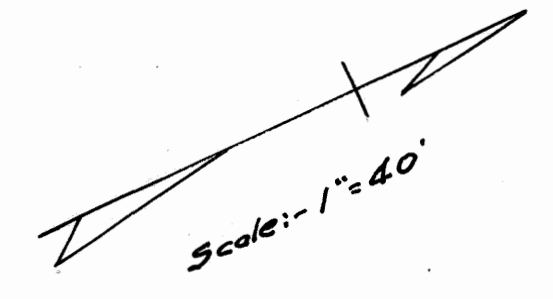
LUCAS COUNTY
LUC-24-(29.17-30.28)

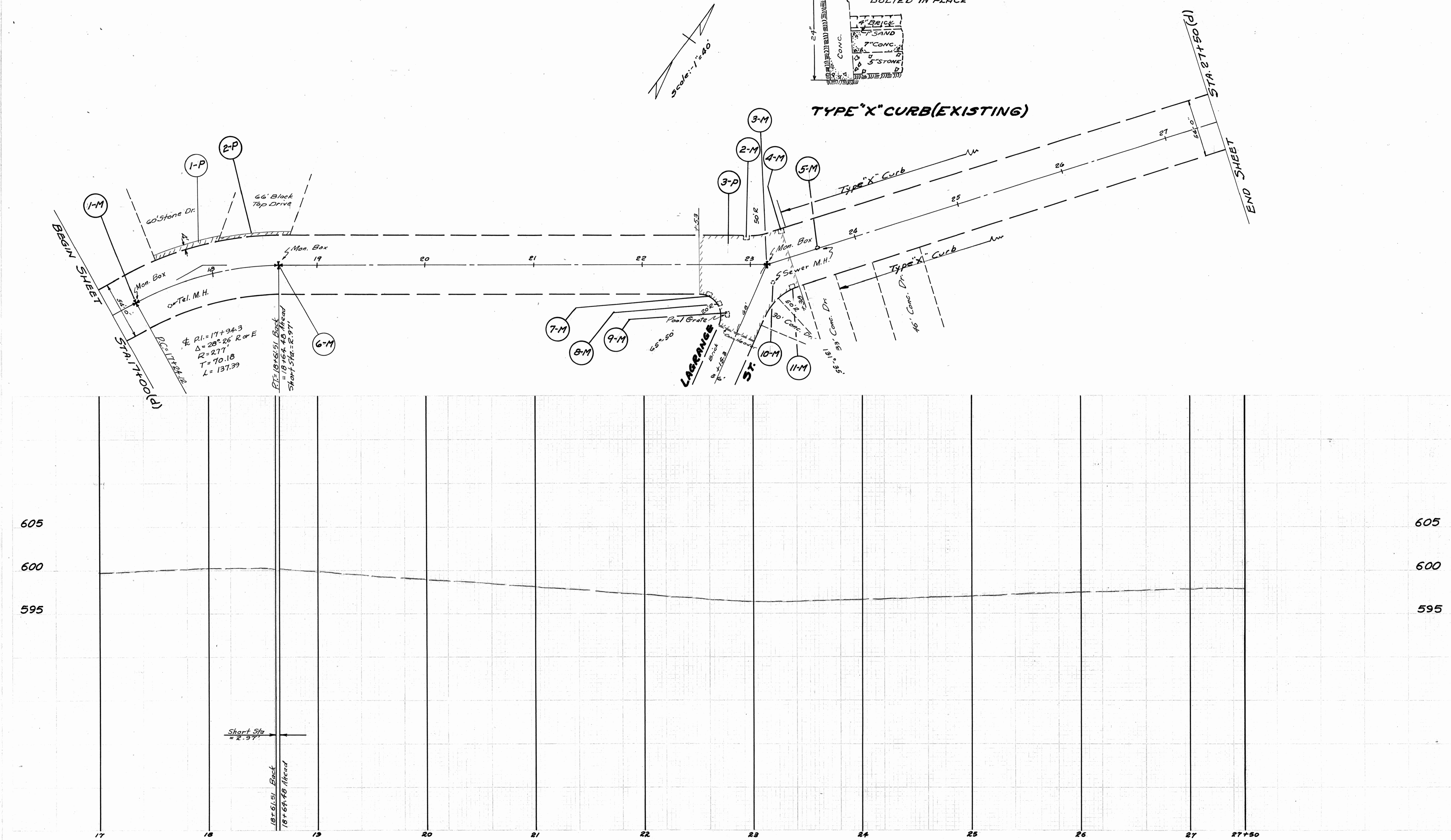


Scale: 1" = 40'



DATA ON EXISTING STRUCTURE
 Br. No. LU-24-299
 Type - Deck Girder
 Span - 1 @ 23'-6"
 1 @ 21'-10"
 Roadway - 1 @ 21'-0"
 1 @ 17'-0"
 Approach Width = 54'-0"
 Vertical Clearance - Min. = 15'-0"
 Skew Angle = 50° Lt. Forward





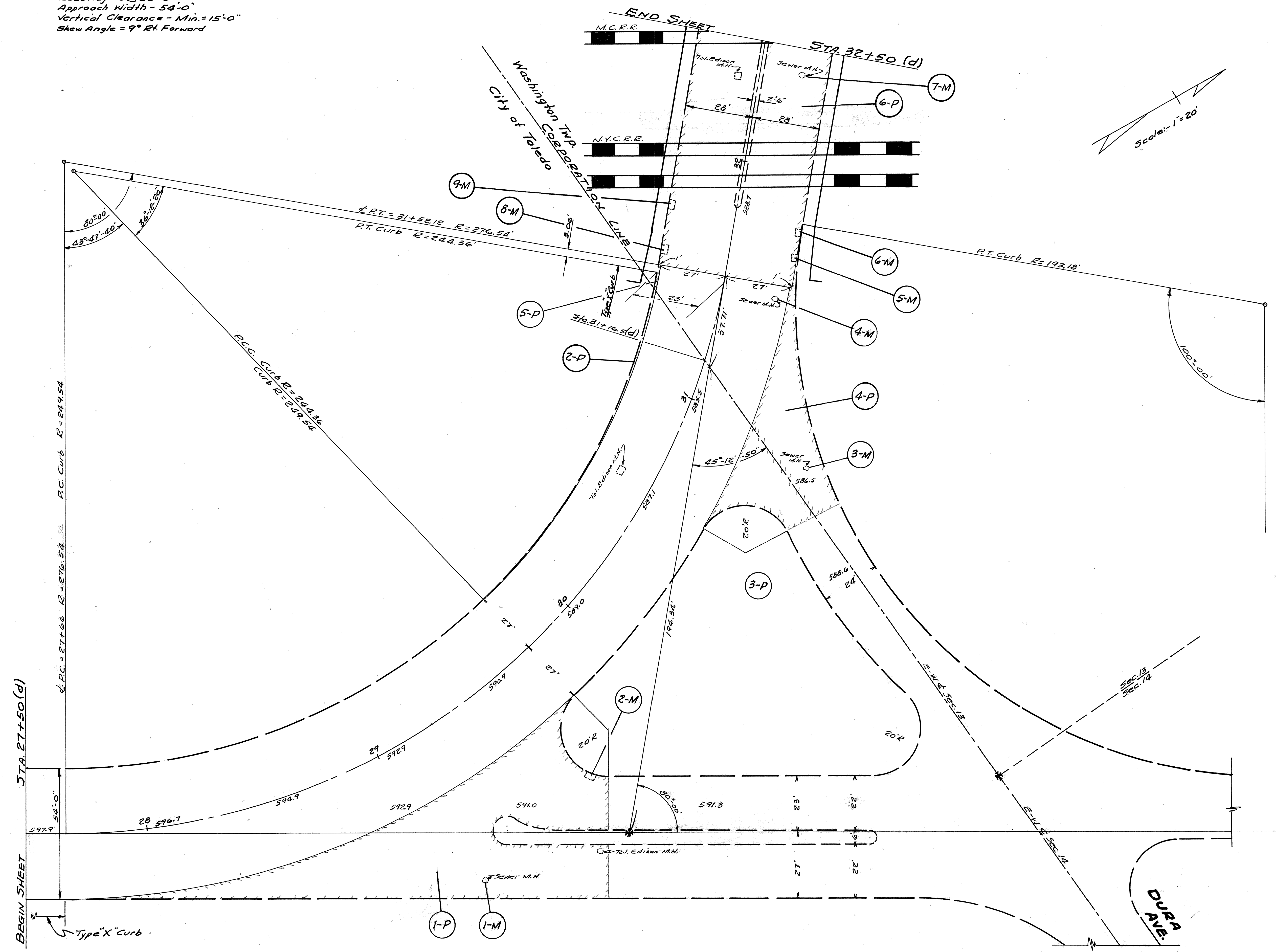
FED. RD. DIVISION	STATE	PROJECT	TYPE FUNDS
2	OHIO		1951

10
12

LUCAS COUNTY
LUC-24-(29.17-30.28)

DATA ON EXISTING STRUCTURE

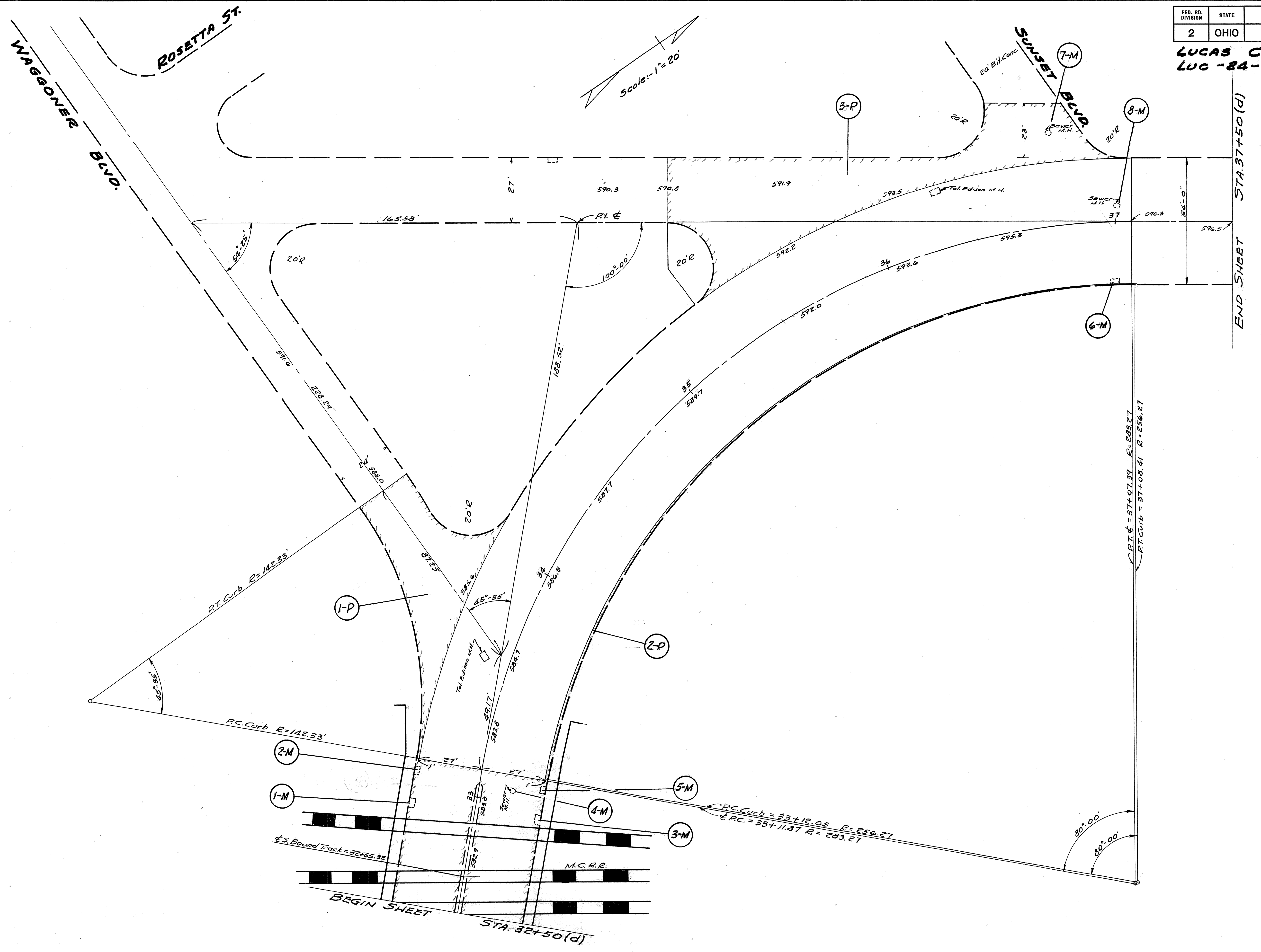
B.F. No. LU-24-303
 Type - Deck Girder
 Span - 1 @ 32'-8"
 1 @ 32'-8"
 Roadway - 2 @ 26'-8"
 Approach Width - 54'-0"
 Vertical Clearance - Min. = 15'-0"
 Skew Angle = 9° Rt. Forward

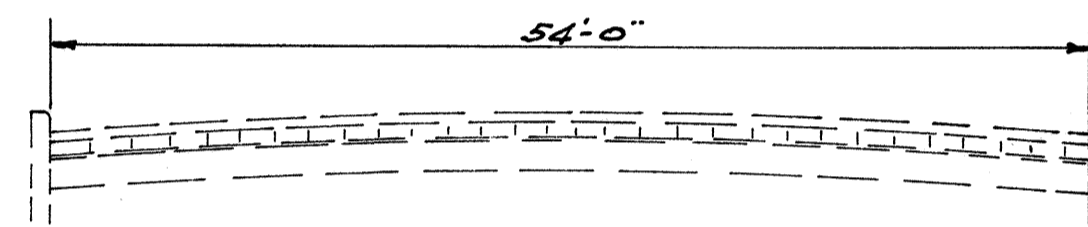
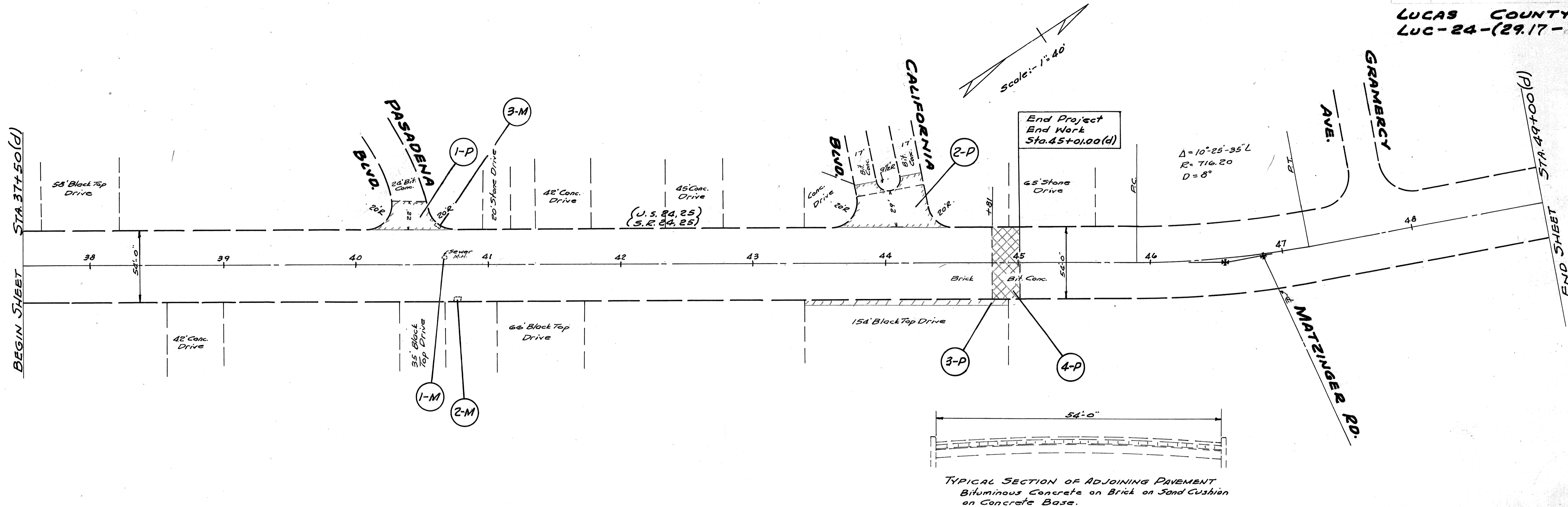


FED. RD. DIVISION	STATE	PROJECT	TYPE FUNDS
2	OHIO		1951

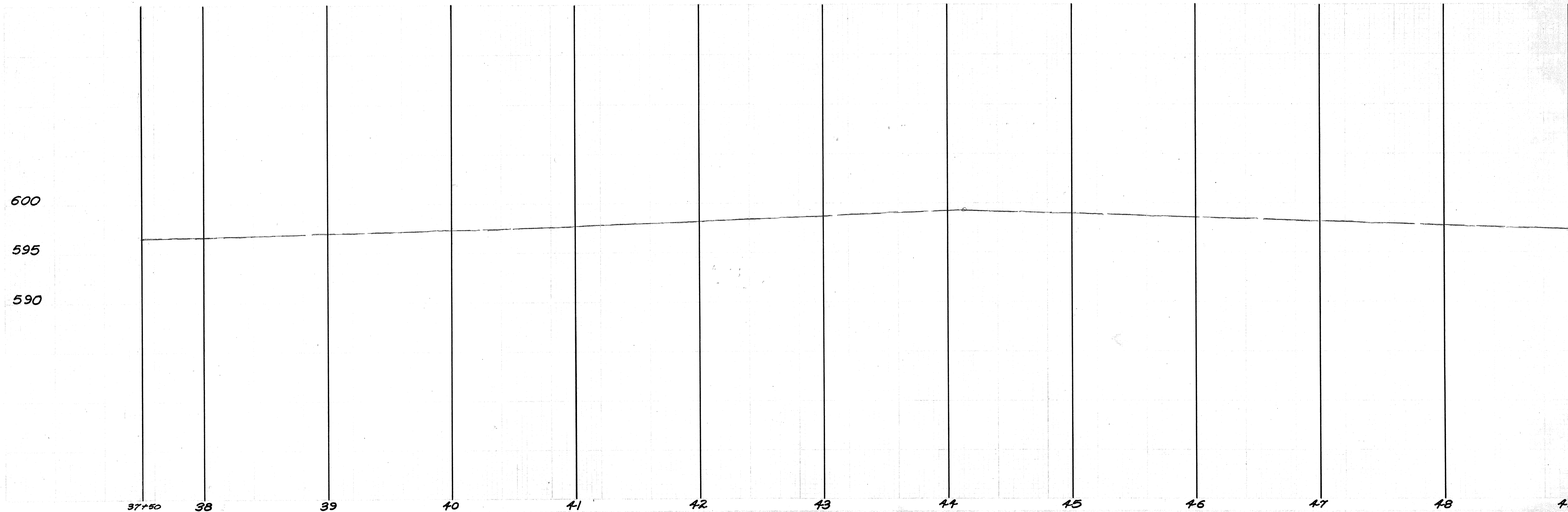
11
12

LUCAS COUNTY
LUC-24-(29.17-30.28)





TYPICAL SECTION OF ADJOINING PAVEMENT
Bituminous Concrete on Brick on Sand Cushion
on Concrete Base.



OS A-22