

I.C.H. 11. LUCAS		SEC. A. COUNTY	
FED. RD DIST. NO.	STATE PROJECT	FED. AID PROJECT	FISCAL YEAR
10	OHIO	385	1924

# STATE OF OHIO

## DEPARTMENT OF HIGHWAYS & PUBLIC WORKS

### DIVISION OF HIGHWAYS

#### BUREAU OF CONSTRUCTION

INDEX	
TITLE PAGE	PAGE 1.
TYPICAL CROSS SECTION	PAGE 2.
PLANS AND PROFILE	PAGES 3 to 6
CROSS SECTIONS	PAGES 7 to 10
STRUCTURAL PLANS	PAGE 11 to 13
SUMMARY SHEET	PAGE 14.

# TOLEDO-DETROIT ROAD

I.C.H. NO. 11.  
LUCAS  
WASHINGTON TWP.

SECTION "A"

PET. NO. 4625  
COUNTY  
1924

The Standard Specifications of the State of Ohio, Division of Highways, in force on date of contract will govern this improvement.

I hereby approve these plans and declare that the making of this improvement will require the closing to traffic of the highway and that detours will be provided as shown on the plan and estimates.

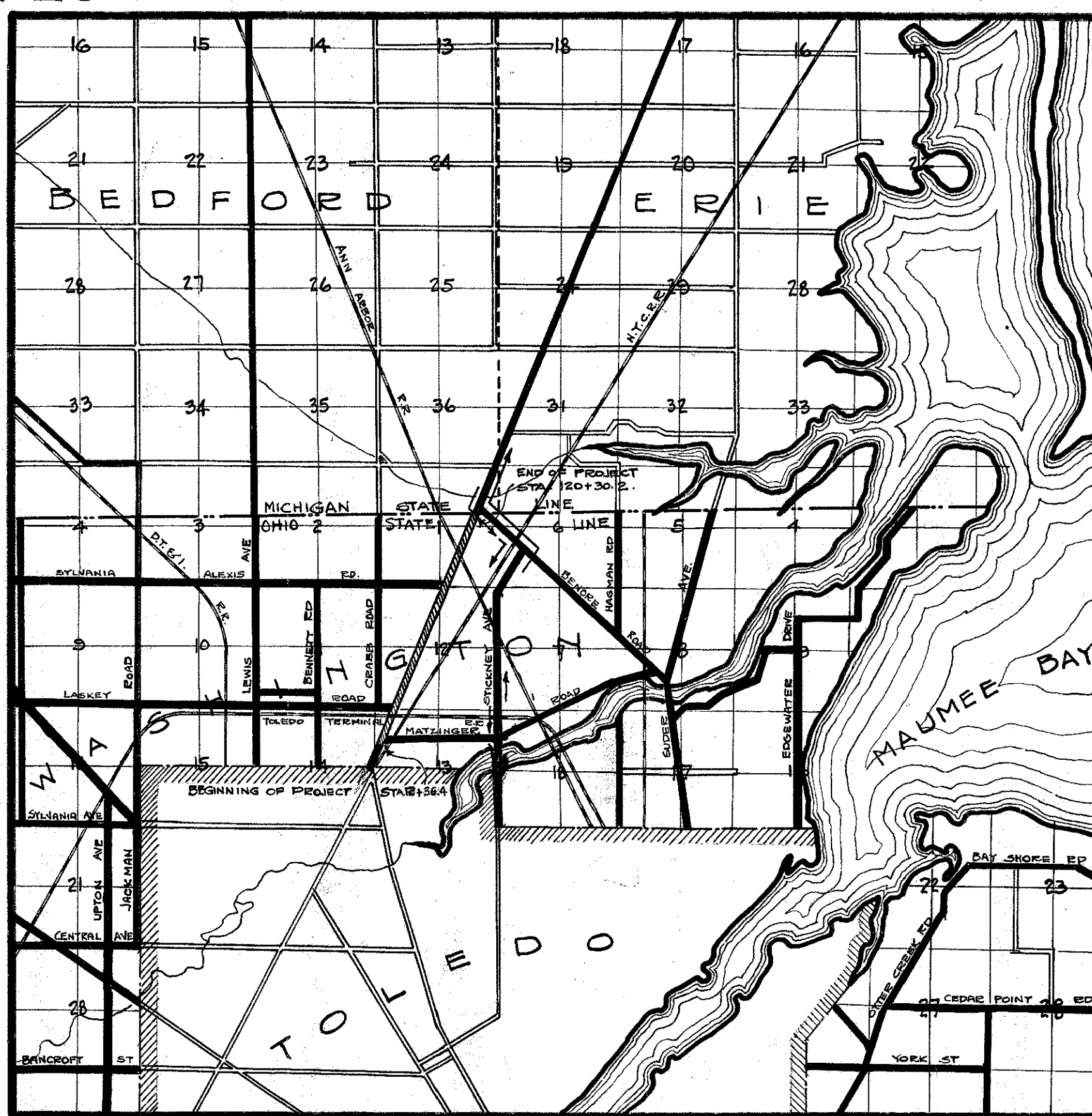
CONVENTIONAL SIGNS.

STATE LINE	-----
COUNTY LINE	-----
TOWNSHIP LINE	-----
SECTION LINE	-----
PROPERTY LINE NOT FENCED	-----
CENTER LINE	-----
CITY LINE	-----
FENCE	-----
TELEPHONE OR TELEGRAPH	-----
STEAM RAILROAD	-----

We, the Commissioners of Lucas County hereby approve these plans and certify that the right-of-way 60' wide is available for the construction, maintenance and repair of the highway.

*R. E. Farnsworth*  
*John Gaskman*  
*Ray E. Davis*

DATE 3-21 1924. COUNTY COMMISSIONERS.



LOCATION PLAN  
SCALE OF MILES

PORTION TO BE IMPROVED  
DETOURS SHOWN THUS

SCALES  
PLAN 1" = 50'  
PROFILE (VERTICAL) 1" = 10'  
PROFILE (HORIZONTAL) 1" = 50'  
CROSS SECTIONS 1" = 5'

APPROVED: *W. C. Sawyer*  
DATE: 3-21-24 RESIDENT ENGINEER.

APPROVED: *M. D. Henahan*  
DATE: 4/1/24 DIVISION ENGINEER.

APPROVED: *G. F. Adlesinger*  
DATE: 5/3/24 STATE HIGHWAY ENGINEER.

APPROVED: *LaBoulay*  
DATE: 5/3/24 DIRECTOR OF HIGHWAYS & PUBLIC WORKS.

RECOMMENDED FOR APPROVAL:  
DATE: \_\_\_\_\_ DISTRICT ENGINEER, BUREAU OF PUBLIC ROADS.

RECOMMENDED FOR APPROVAL:  
DATE: \_\_\_\_\_ CHIEF ENGINEER, BUREAU OF PUBLIC ROADS.

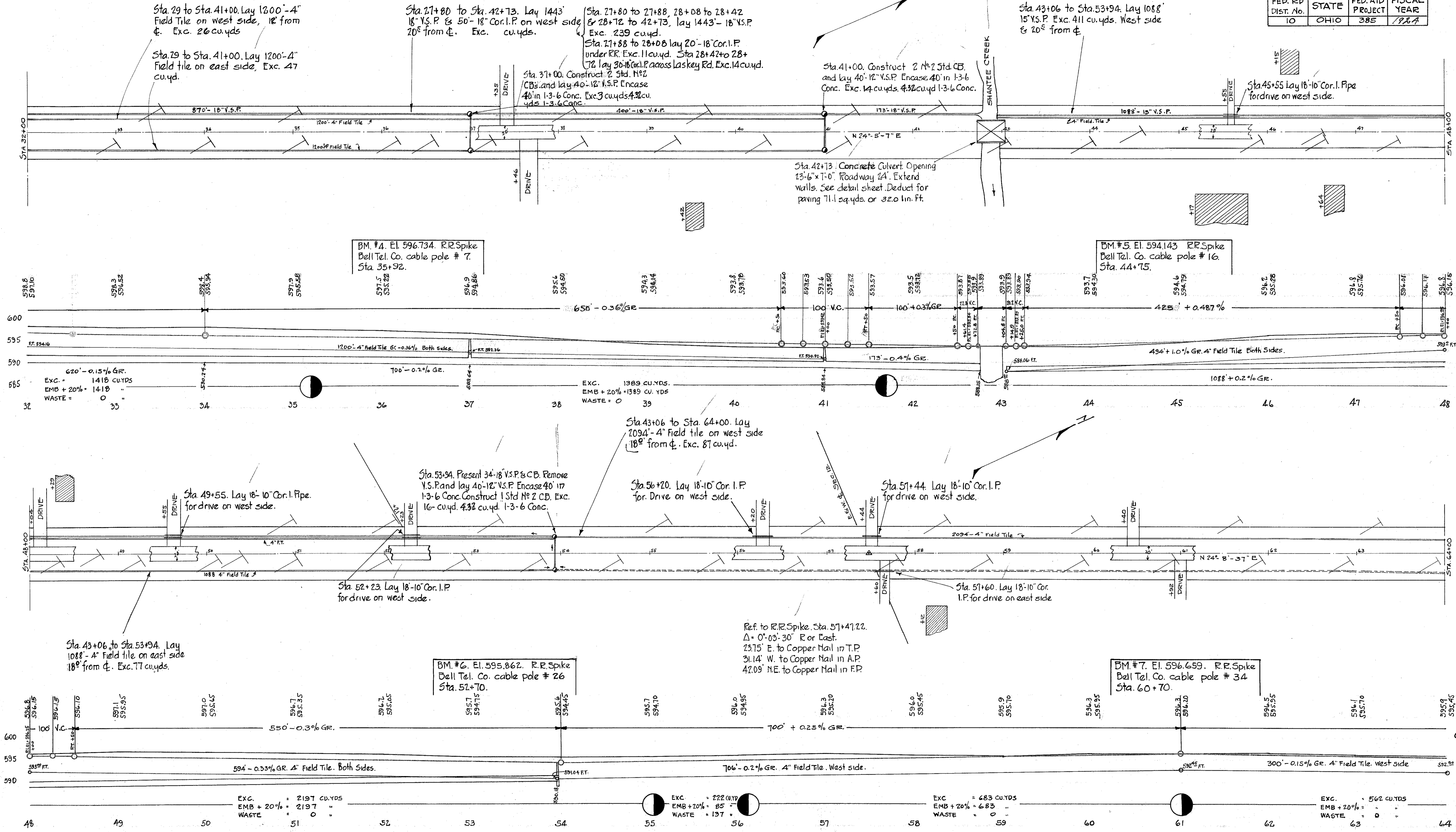
APPROVED: \_\_\_\_\_  
DATE: \_\_\_\_\_ CHIEF OF BUREAU.

CONSTRUCTION BUREAU  
JUN 29 1924  
GROUND PHOTOLAB



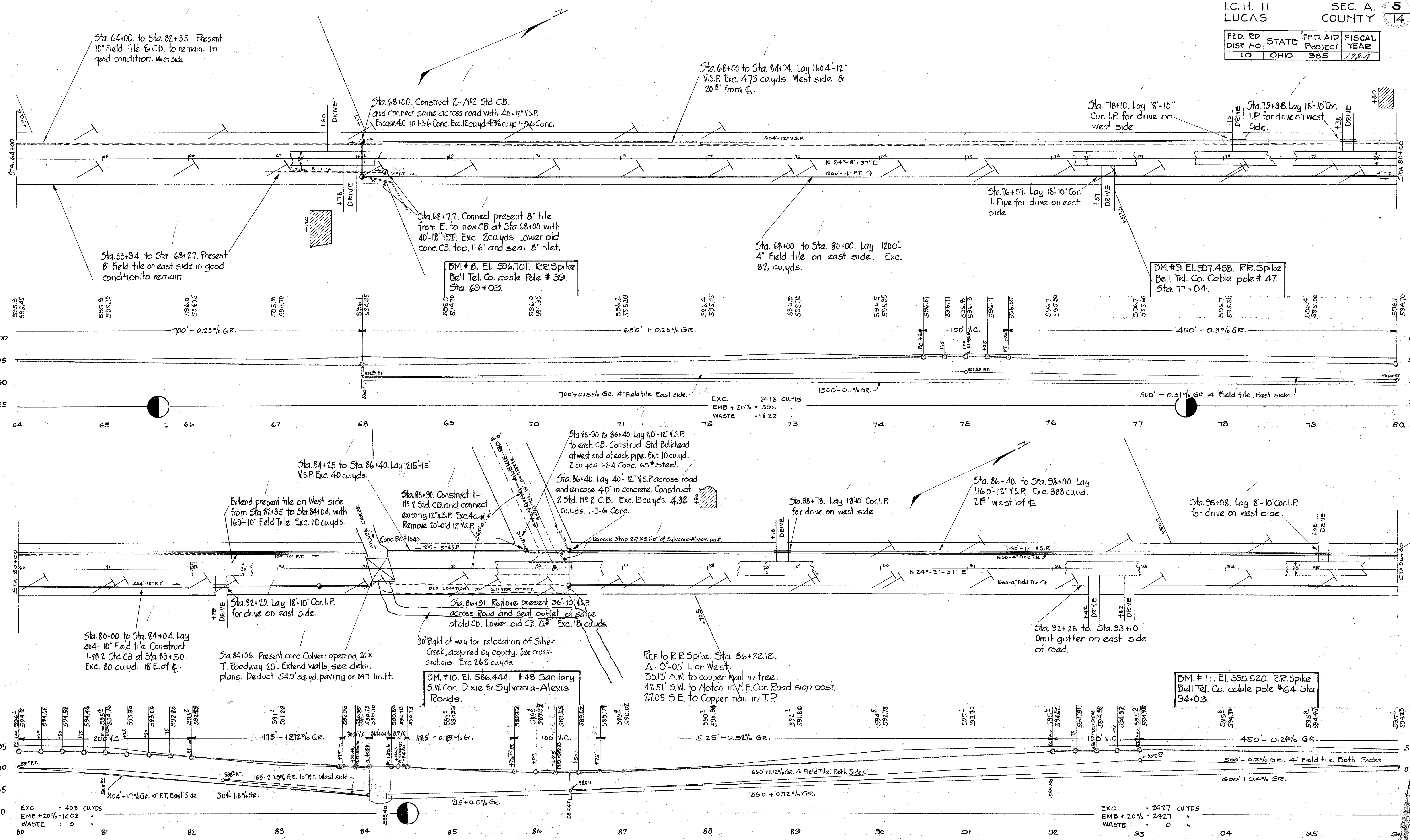


FED. RD DIST. No.	STATE	FED. AID PROJECT	FISCAL YEAR
10	OHIO	385	1967





FED. RD DIST NO	STATE	FED AID PROJECT	FISCAL YEAR
10	OHIO	385	1987



Sta. 64+00. to Sta. 82+35 Present 10" Field Tile & C.B. to remain. In good condition. West side

Sta. 68+00. Construct 2-1#2 Std. C.B. and connect same across road with 40'-12" V.S.P. Encase 40' in 1-3-6 Conc. Exc. 12 cu.yd. 4.32 cu.yd. 1-3-6 Conc.

Sta. 68+00 to Sta. 84+04. Lay 1604'-12" V.S.P. Exc. 473 cu.yds. West side & 20' from E.

Sta. 78+10. Lay 18'-10" Cor. I.P. for drive on west side

Sta. 79+38. Lay 18'-10" Cor. I.P. for drive on west side.

Sta. 53+94 to Sta. 68+27. Present 8" Field tile on east side in good condition. to remain.

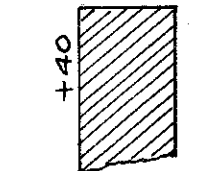
Sta. 68+27. Connect present 8" tile from E. to new CB at Sta. 68+00 with 40'-10" E.T. Exc. 2 cu.yds. Lower old conc. C.B. top. 1'-6" and seal 8" inlet.

Sta. 68+00 to Sta. 80+00. Lay 1200' 4" Field tile on east side. Exc. 82 cu.yds.

Sta. 76+51. Lay 18'-10" Cor. I. Pipe for drive on east side.

BM. # 9. El. 597.458. R.R. Spike Bell Tel. Co. Cable pole # 47. Sta. 77+04.

BM. # 8. El. 596.701. R.R. Spike Bell Tel. Co. cable Pole # 39. Sta. 69+03.



Exc. 2418 CU.YDS  
EMB + 20% = 596  
WASTE = 1822

Exc. 13 cu.yds. 4.32 cu.yds. 1-3-6 Conc.

Sta. 86+40. to Sta. 98+00. Lay 1160'-12" V.S.P. Exc. 388 cu.yd. 21' west of E.

Sta. 95+08. Lay 18'-10" Cor. I.P. for drive on west side.

Extend present tile on West side from Sta. 82+35 to Sta. 84+04. with 169'-10" Field Tile Exc. 10 cu.yds.

Sta. 85+90. Construct 1-1#2 Std. C.B. and connect existing 12" V.S.P. Exc. 4 cu.yd. Remove 20'-old 12" V.S.P.

Sta. 85+90 & 86+40 Lay 20'-12" V.S.P. to each C.B. Construct Std. Bulkhead at west end of each pipe. Exc. 10 cu.yd. 2 cu.yds. 1-2-4 Conc. 65# Steel.

Sta. 86+40. Lay 40'-12" V.S.P. across road and encase 40' in concrete. Construct 2 Std. 1#2 C.B. Exc. 13 cu.yds. 4.32 cu.yds. 1-3-6 Conc.

Sta. 88+78. Lay 18'-10" Cor. I.P. for drive on west side.

Sta. 80+00 to Sta. 84+04. Lay 404'-10" Field tile. Construct 1-1#2 Std. C.B. at Sta. 83+50. Exc. 80 cu.yd. 18' E. of E.

Sta. 84+06. Present conc. Culvert opening 24x7. Roadway 25'. Extend walls, see detail plans. Deduct 54.9 sq.yd. paving or 24.7 lin.ft.

30' Right of way for relocation of Silver Creek, acquired by county. See cross-sections. Exc. 262 cu.yds.

REF. to R.R. Spike. Sta. 86+22.12. Δ = 0'-05" L or West. 35.13' N.W. to copper nail in tree. 42.51' S.W. to Notch in N.E. Cor. Road sign post. 27.09' S.E. to Copper nail in T.P.

Sta. 92+25 to Sta. 93+10 Omit gutter on east side of road.

BM. # 11. El. 595.520. R.R. Spike Bell Tel. Co. cable pole # 64. Sta. 94+03.

BM. # 10. El. 586.444. # 48 Sanitary S.W. Cor. Dixie & Sylvania-Alexis Roads.

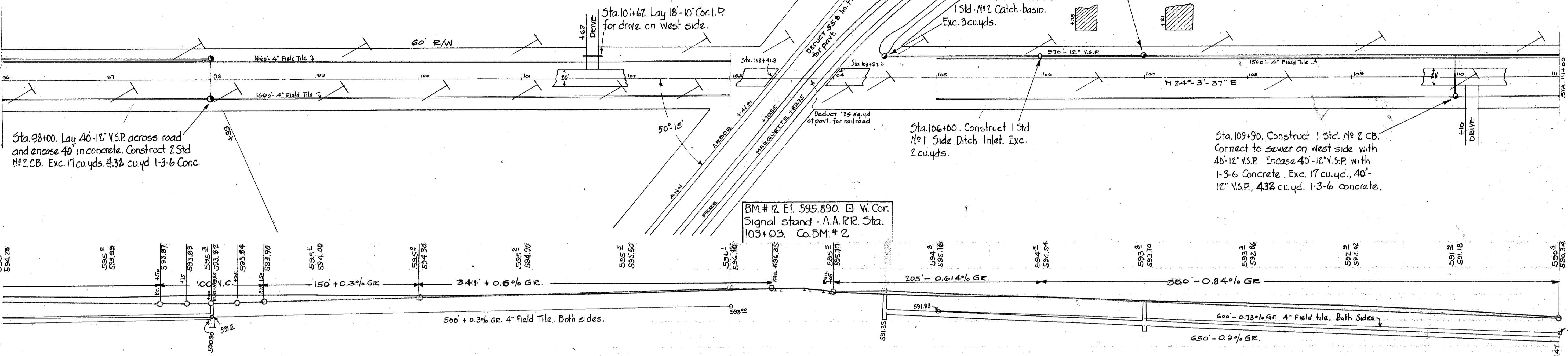
Exc. = 1403 CU.YDS  
EMB + 20% = 1403  
WASTE = 0

Exc. = 2427 CU.YDS  
EMB + 20% = 2427  
WASTE = 0

FED. RD DIST. No.	STATE	FED. AID PROJECT	FISCAL YEAR
10	OHIO	385	1987

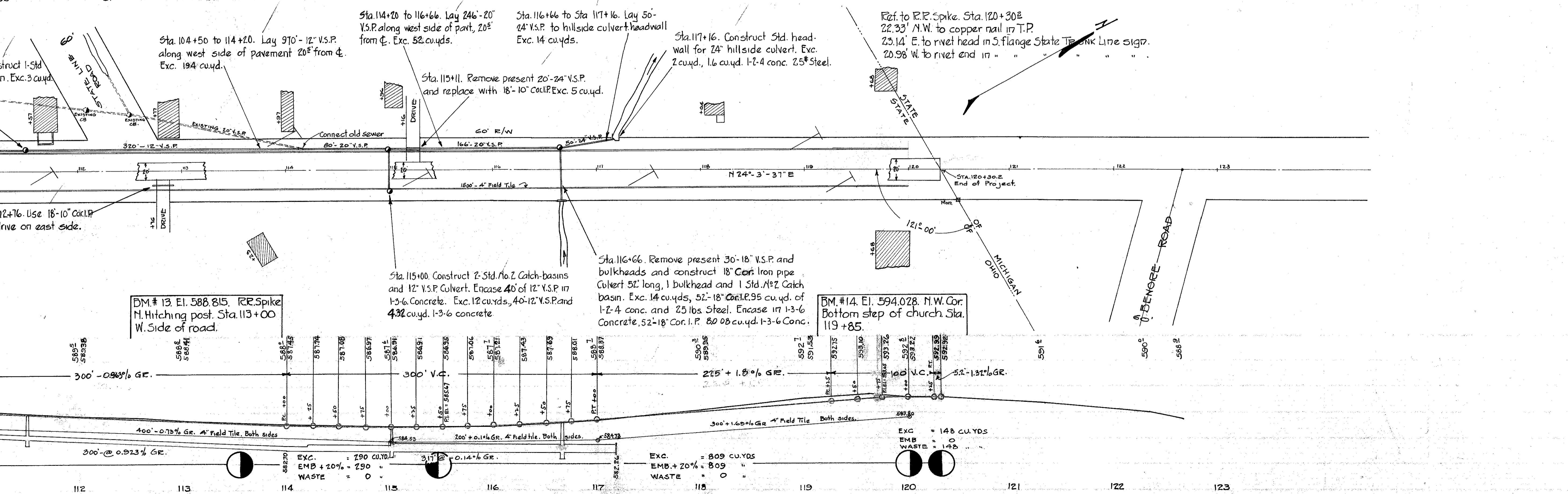
Sta. 86+40 to Sta. 103+00. Lay 1660'-4" Field tile on each side of road. Exc. 185 cu.yds. 18' from  $\phi$ .

Sta. 105+00 to Sta. 120+00. Lay 1500'-4" Field tile on each side of road. Exc. 216 cu.yds. 18' west of  $\phi$ .



EXC.	= 778 CU.YDS
EMB + 20%	= 778 "
WASTE	= 0 "

EXC.	= 1237 CU.YDS.
EMB + 20%	= 1237 "
WASTE	= 0 "



EXC.	= 290 CU.YD.
EMB + 20%	= 290 "
WASTE	= 0 "

EXC.	= 809 CU.YDS
EMB + 20%	= 809 "
WASTE	= 0 "

EXC.	= 148 CU.YDS
EMB + 20%	= 148 "
WASTE	= 0 "