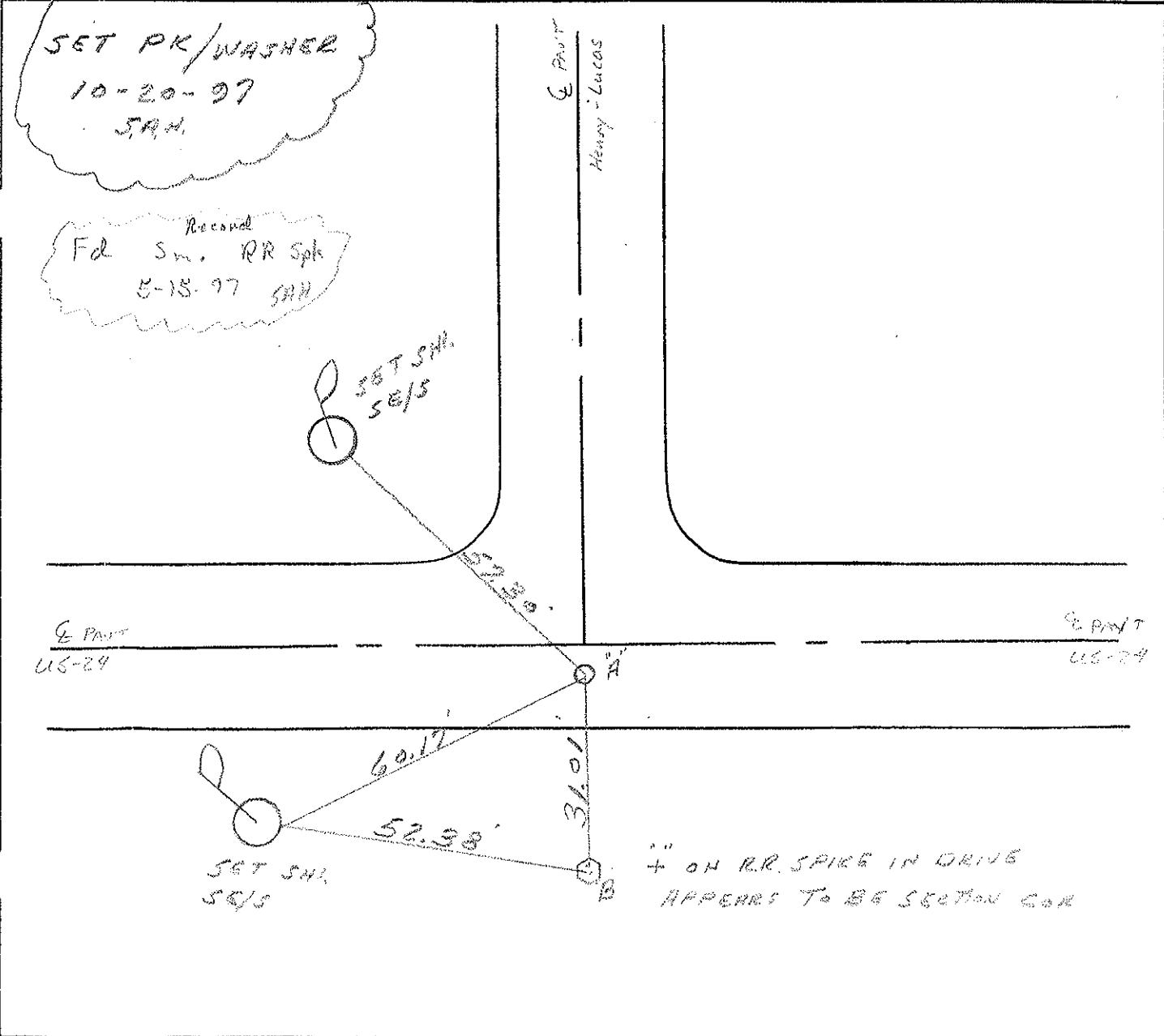
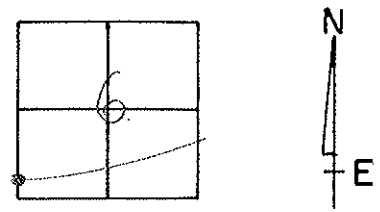


# O.D.O.T. DISTRICT 2 SURVEY OFFICE

PERSONNEL \_\_\_\_\_ REFERENCE NO. 1 SHEET 1 OF 68  
 NOTES HUSS  
 H.C. MOSEK DATE 5-15-97 ROUTE US-24  
 R.C. VAN DUSEN WEATHER Cloud/Windy COUNTY Lucas  
 \_\_\_\_\_ TEMP. +48°F TOWNSHIP Providence  
 \_\_\_\_\_ SECTION 6  
 \_\_\_\_\_ T 5 N R 8 E

TYPE MONUMENT PK/W  
 ON SURFACE - BELOW YES  
~~LEFT - C~~ PAV'T. - RIGHT 2.0'  
9.4 TO RT. EDGE PAVEMENT  
 S.L.M. 0 to 0



Resurfaced 1997

O.D.O.T. DISTRICT 2 SURVEY OFFICE

PERSONNEL

REFERENCE NO. 1

SHEET 1 OF     

NOTES LOHRKE

H.C. ROMETO

R.C. CANTERBURY

BARNHISEL

DATE 6-1-93

WEATHER Clear

TEMP. 760

ROUTE U.S. 24

COUNTY Lucas

TOWNSHIP Providence

SECTION 6

T      R     

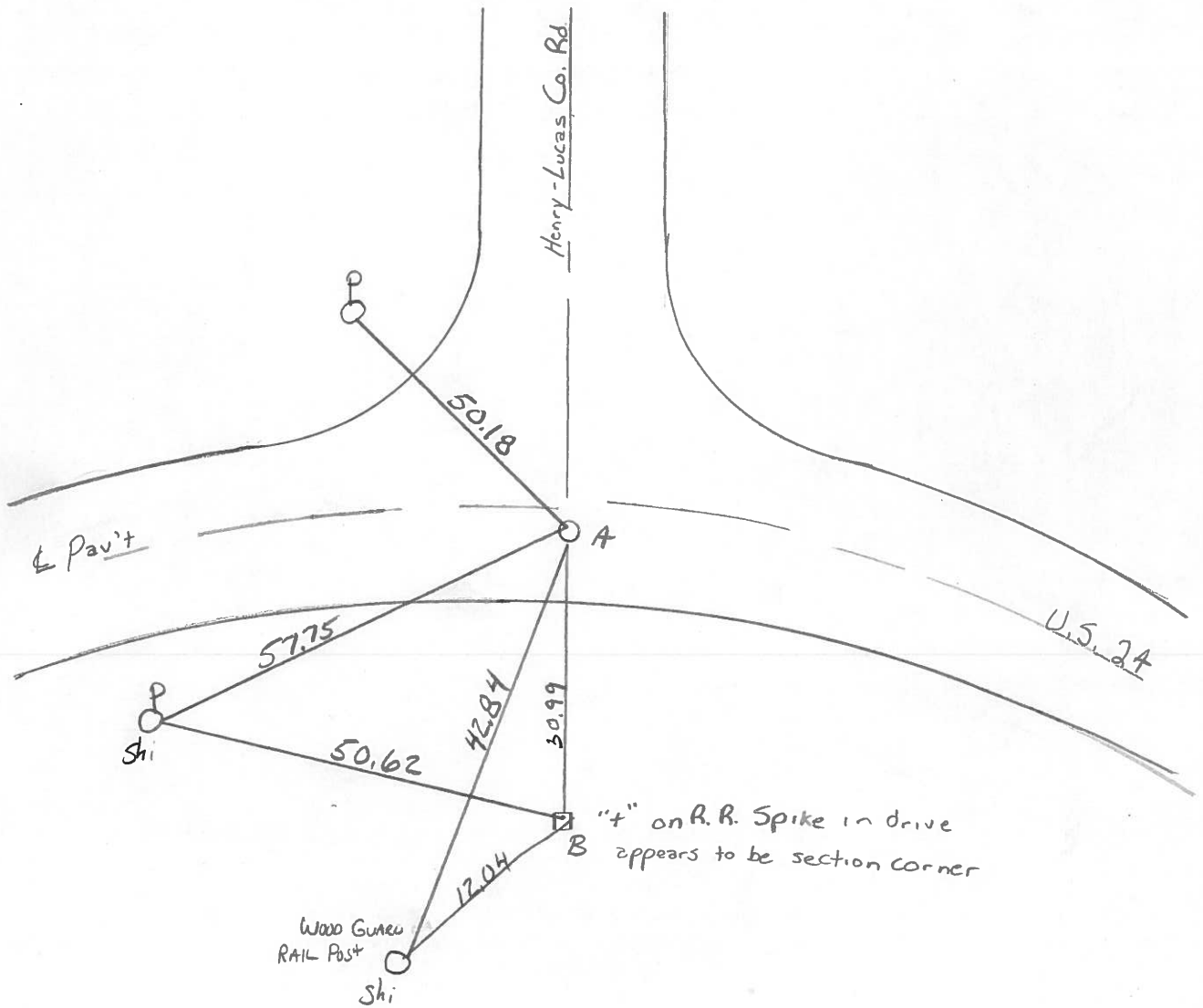
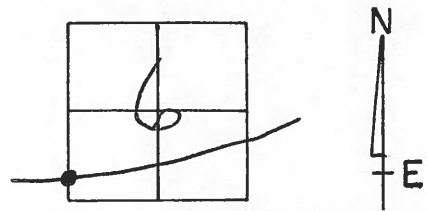
TYPE MONUMENT A-Sm. P.R. Spike Reset 7-8-93

ON SURFACE - ~~BELOW~~ yes

~~LEFT~~ - C PAV'T. - RIGHT 3.2

9.0 TO R+ EDGE PAVEMENT

S.L.M. 0+00



O.D.O.T. DISTRICT 2 SURVEY OFFICE

SHEET 1 OF

County LUCAS ~~S.P.~~ U.S. 24

Date 9 JUNE 1981

Township PROVIDENCE

Weather WARM

Section 6

Temp. 70°

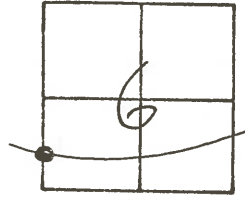
T N, R E

Personnel HOFFMAN

LOEHRKE

HOUSEHOLDER

1



SET SMALL R.R. SPK.

9-14-81 SWH



FD. P.K. NAIL TO SURFACE  
STA. 0+00.00  
3.0' S. OF & PAVT.

" ON LUC.  
CO. B.M.

58.72'

HENRY-LUCAS CO. RD

24

SHINER IN 27" ASH  
NW/S

76.36'

31.00

" ON R.R. SPIKE IN DRIVE  
LOOKS TO BE SECTION CORNER

50.24'

SHINER

SHINER E. SIDE

U.S.

S. TOMSIC

Q.D.O.T. DISTRICT 2 SURVEY OFFICE

Sht. 1 of     

County Lucas S.R. US-24

Date 23 June 1980

Township Providence

Weather Warm

Section 6

Temp. 70°

T    N, R    E

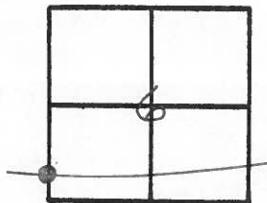
Personnel L. Stone

R. Michalak

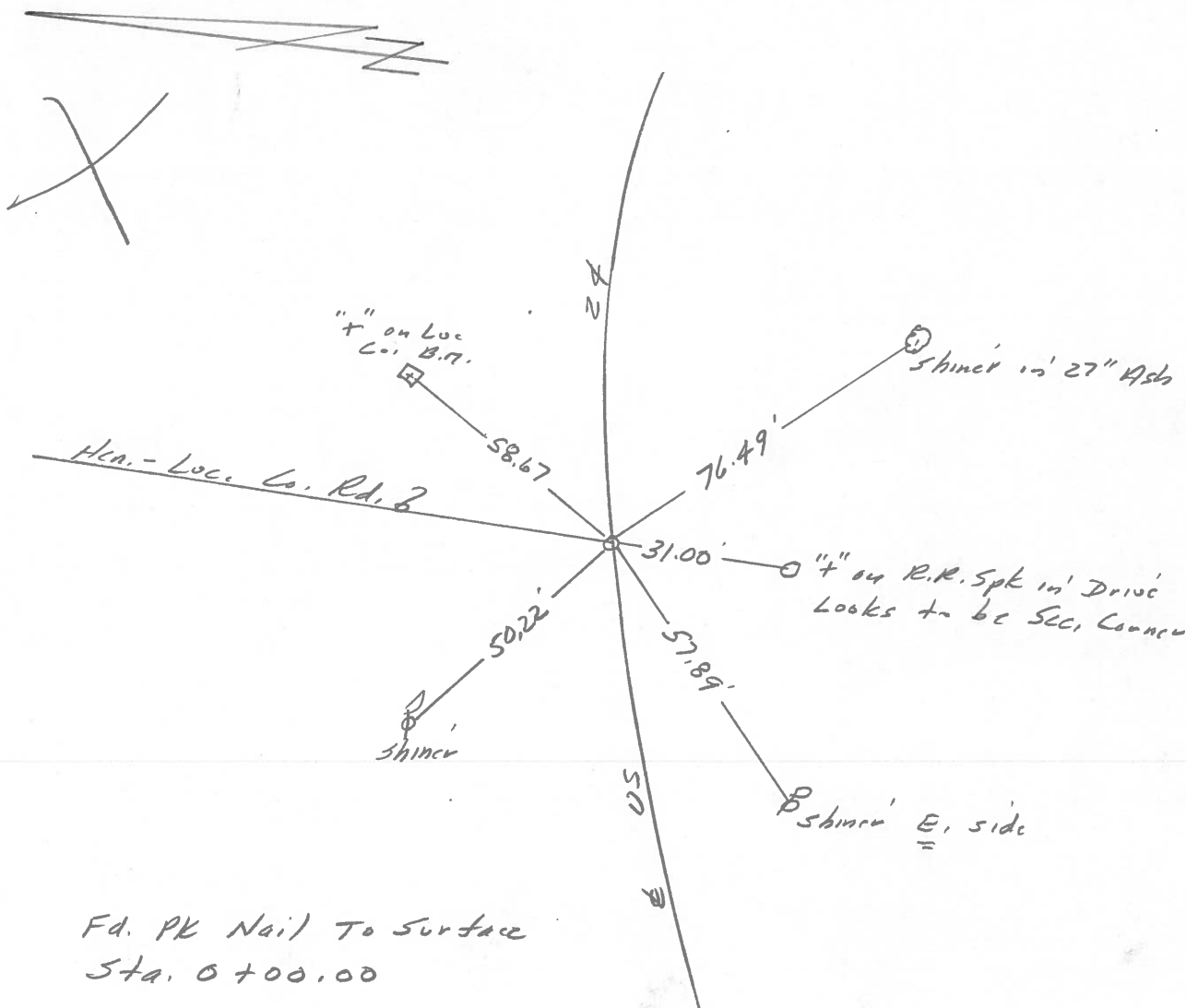
P. Neuser

D. Curtis

D. Granata

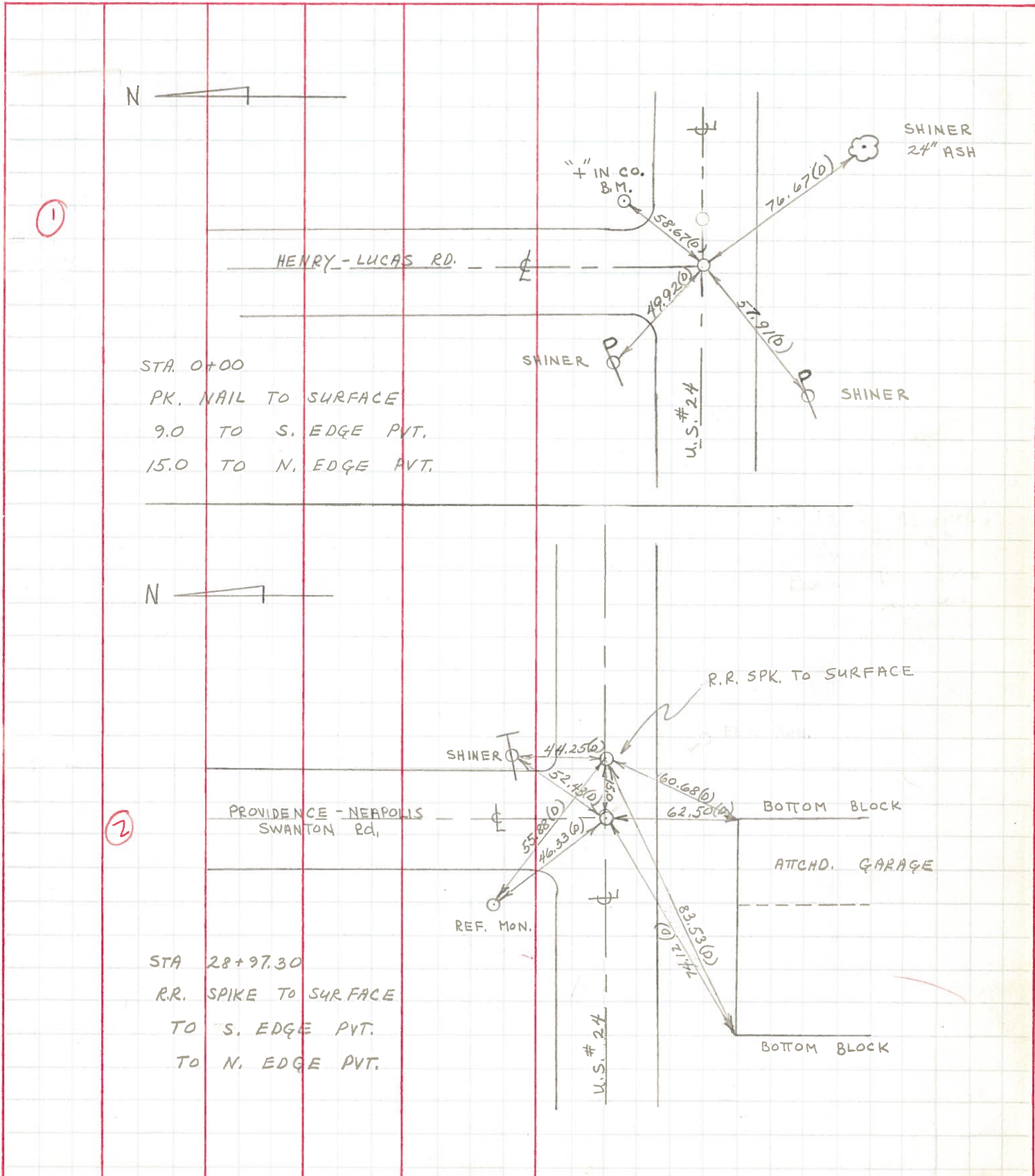


REF. NO. 4201



PERSONNEL	TITLE	PERSONNEL	TITLE	COUNTY	LUCAS	DATE	JUNE 71
W. DENNO				S. R.	US #24	WEATHER	HOT & CLOUDY
D. CURTIS				SEC.		TEMP.	85 ±
D. STEVENS							
R. BRANNAN							

DESCRIPTION \_\_\_\_\_ REFERENCES TO CONTROL POINTS \_\_\_\_\_ JOB NO. \_\_\_\_\_  
 LEFT CENTER LINE RIGHT









PERSONNEL TITLE PERSONNEL TITLE COUNTY Lucas DATE 1 Feb. 66  
 Stone Beck S. R. #24 WEATHER Cool  
 Grindley Schrock SEC. TEMP. 18°

DESCRIPTION *Pots to Contact Points* LEFT CENTER LINE RIGHT JOB NO.

0+00	= Henry - Lucas	62.47'	N.N.E. to Shiner in T.P. (D)
1	Co. Line	76.74'	S.E. to Shiner in 12" Ash (D)
	Ed. R.R. Nail	50.22'	N.W. to Shiner in P.P. (D)
	to Surface	57.64'	S.W. to Shiner in P.P. (D)
28+9730	= Providence Rd.	55.90'	N.W. to Corn. Man. (D)
2	Ed. R.R. Spt.	53.15'	S.E. to Corn. Man. (D)
	to Surface	44.29'	N.E. to Shiner in T.P. (D)
		60.72'	S. to N.E. Cor. Lowest Black of Garage (P)
92+7635	= P.C.	66.93'	N.E. To Shiner in T.P. (D)
3	Set R.R. Nail	76.46'	S.E. To Shiner in 10" Twin Ash (D)
	to Surface	85.48'	S.W. To Shiner in 18" Sycamore (D)
57+4635	= P.T.	52.31'	N.E. To Shiner in T.P. (D)
4	Ed. R.R. Spt.	26.99'	S.E. To "X" on Street Along 1' Below Top
	1/2" Below Surface	25.75'	S.W. To "X" on " " " " " "
			(D)
60+9290	= P.C.	47.44'	N.W. To Shiner in T.P. (D)
5	Ed. R.R. Spt.	22.12'	S.E. To "X" on Street Along 5' Below Top
	to Surface	23.35'	S.W. To "X" on " " " " " "
			(D)
6	Intersection of	84.20'	N.N.W. To Shiner in T.P. (D)
	S.R. # 24 & S.R. # 578	62.87'	S.E. To Shiner in T.P. (D)
	(Grand Rapids Rd.)	122.93'	W.S.W. To Shiner in T.P. (D)
	Ed. Man Box to Surface	58.84'	S.S.E. To Shiner in P.P. (D)



PERSONNEL TITLE PERSONNEL TITLE  
 Silvester \_\_\_\_\_  
 # \_\_\_\_\_  
 Crew \_\_\_\_\_

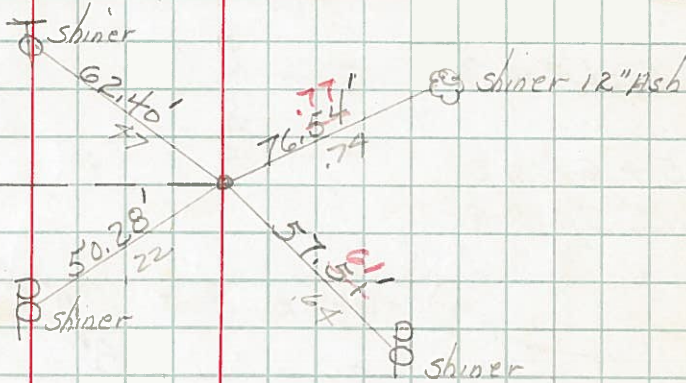
COUNTY Lucas DATE 1  
 S. R. # 24 WEATHER 1958  
 SEC. He-Lu.-Waterville Blay-1963  
 TEMP. \_\_\_\_\_

DESCRIPTION (0.00) JOB NO. \_\_\_\_\_

LEFT CENTER LINE RIGHT



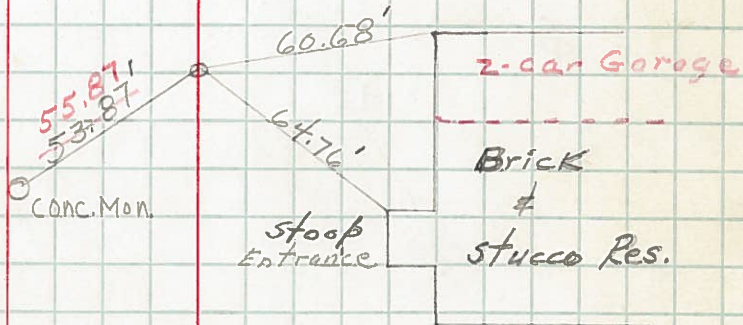
Sta. 0+00 He.-Lu. Line  
 P.R. Spk. Set  
 Found P.K. & Shiner  
 8-14-63



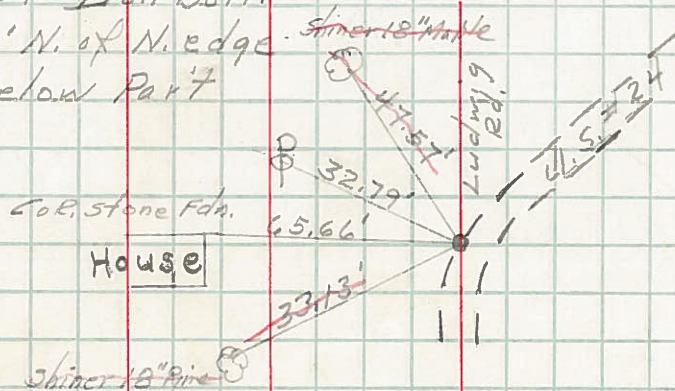
Sta. 28+97.30 Providence Rd.  
 P.I. P.R. Spk. Fd  
 8-14-63

2

895.29



Sta. 37+92.59 Iron Bolt.  
 Bldg Const. (6' N. of N. edge)  
 Part of 1' below Part





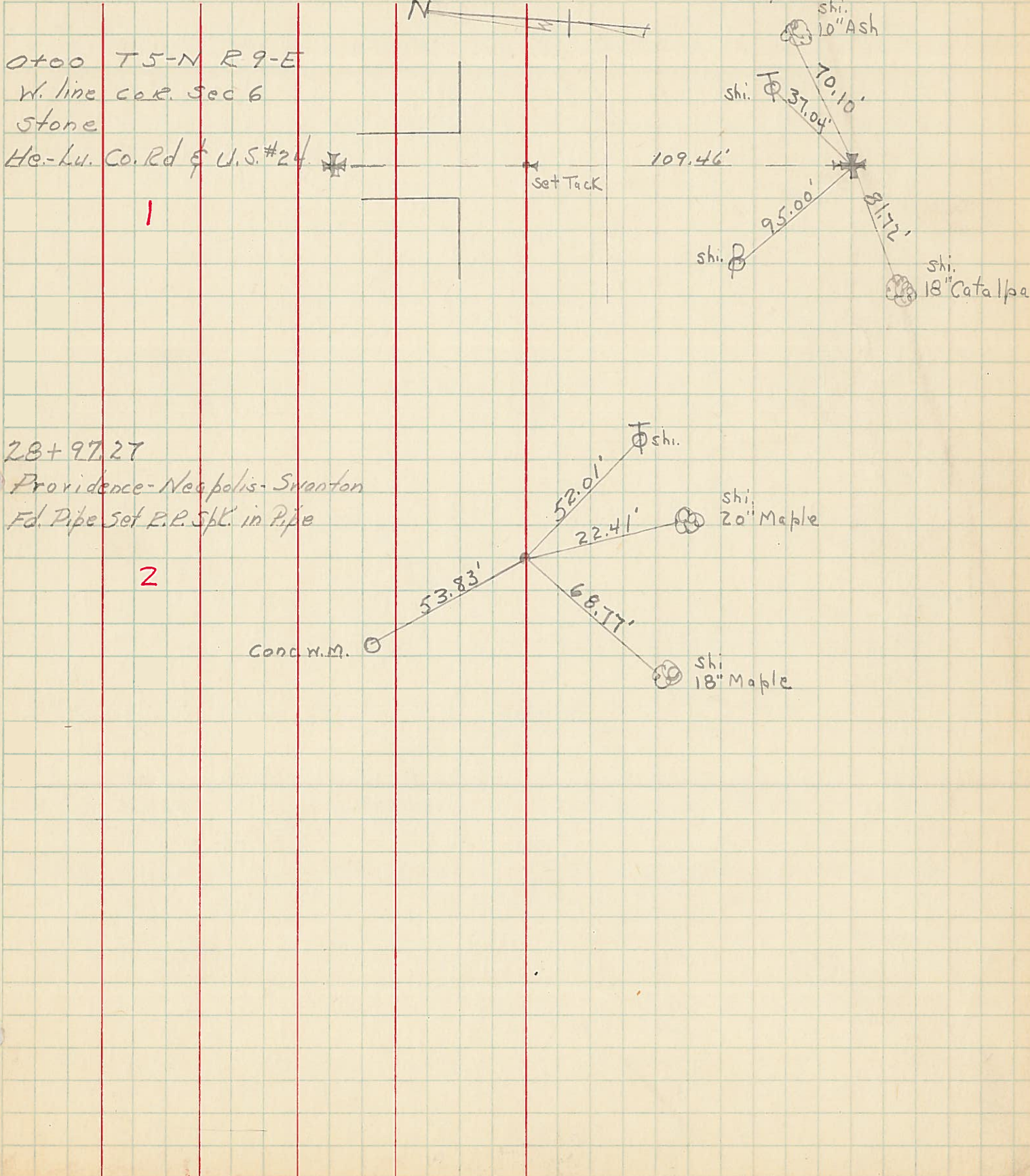
PERSONNEL TITLE PERSONNEL TITLE

COUNTY Lucas DATE 6-24-55

S. R. #24 WEATHER

SEC. TEMP.

DESCRIPTION Control Points He-Lu. Co. line To Waterville Corp JOB NO.





PERSONNEL TITLE PERSONNEL TITLE

COUNTY Lucas DATE 1955

S. R. #24 WEATHER

SEC. # TEMP.

DESCRIPTION U.S. #24 Sec. G. & F Toledo-Napoleon Rd. S.H. 51 JOB NO.

*in book 2 New*

*(Recorded)*

#239 Start @ He: Lu. Co. line  
Sta. 0+00 inter U.S. #24 & Jeffers Rd.

Found Iron Pin 45.63' N.W. to X E. end of Pump island  
1-24-55 69.20' S.E. to Shiner in T.P.  
103.92' N.E. " " " P.P.  
56.39 W.S.W. to face steel sign pole (Carl's Place)

#240 Sta. 14+91.96 P.I.  
 $\Delta = 7^{\circ}00' Rt.$

#241 Sta. 27+82.54 P.I.  
 $\Delta = 0^{\circ}12'25" Rt.$

#242 Sta. 40+97.06 P.I.  
 $\Delta = 3^{\circ}38'30"$

#243 Sta. 60+09.75 P.I.

#244 Sta. 80+59.90