

# O.D.O.T. DISTRICT 2 SURVEY OFFICE

PERSONNEL \_\_\_\_\_

REFERENCE NO. 2

SHEET 2 OF 68

NOTES Huss

H.C. Moser

R.C. Van Dusen

DATE 5-15-97

WEATHER Cloudy/Windy

TEMP. +48°F

ROUTE US-24

COUNTY Lucas

TOWNSHIP Providence

SECTION 6

T 5 N R 8 E

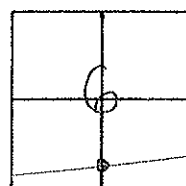
TYPE MONUMENT PK/W 1/2 A-B

ON SURFACE - BELOW YES

LEFT-~~CE~~ PAV'T. - RIGHT YES

12.0' TO RT EDGE PAVEMENT

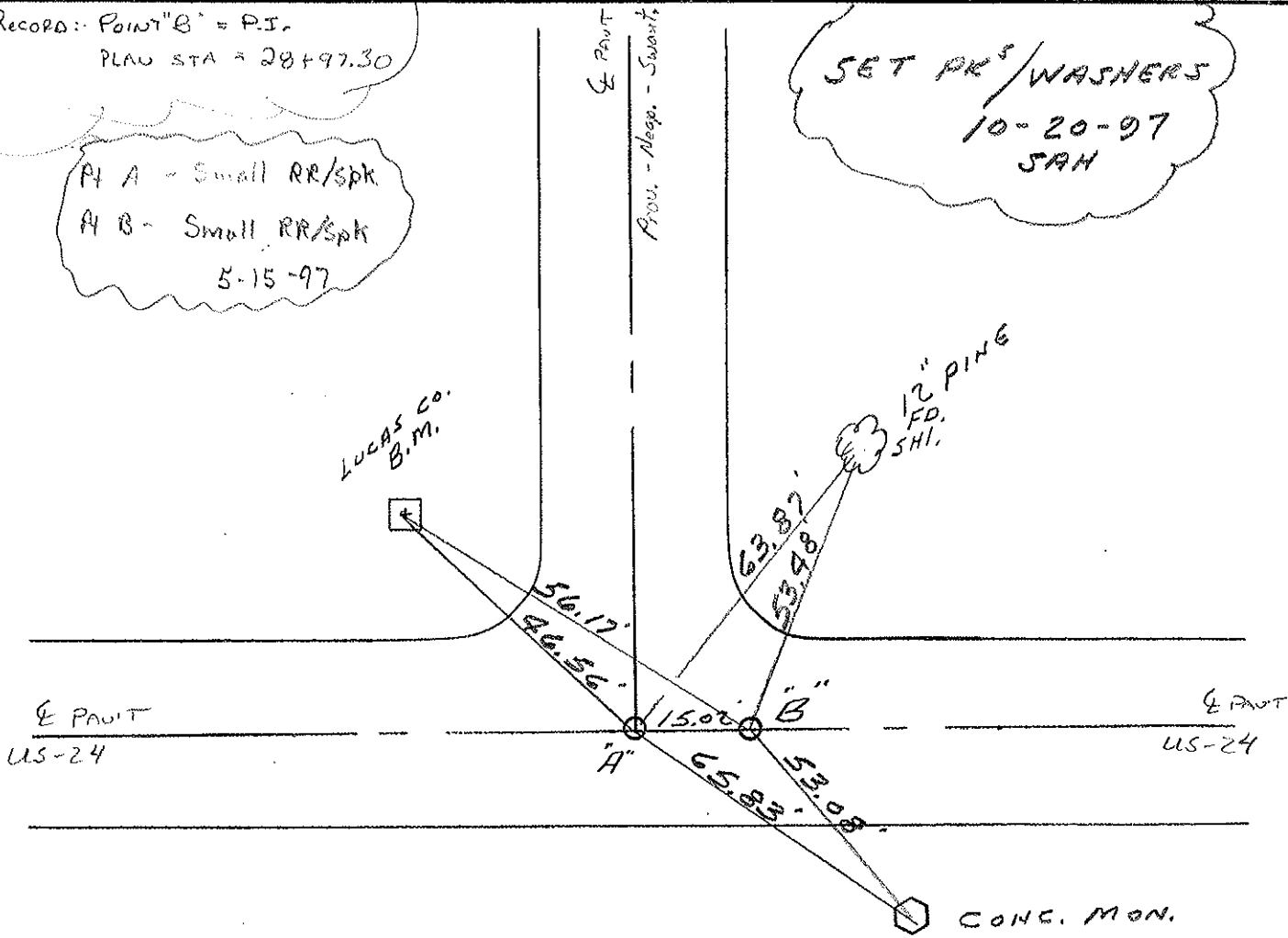
S.L.M. POINT "A" = 28+88 POINT "B" = 29+03



Records: Point "B" = P.I.  
PLAN STA = 28+97.30

A A - Small RR/spk  
A B - Small RR/spk  
5-15-97

SET PK'S/WASHERS  
10-20-97  
SAH



# O.D.O.T. DISTRICT 2 SURVEY OFFICE

PERSONNEL \_\_\_\_\_

REFERENCE NO. 2 SHEET 2 OF \_\_\_\_\_

NOTES Simon

H.C. Curtis

DATE 7-20-92

ROUTE U.S. 24

R.C. Loehrke

WEATHER Cloudy

COUNTY Lucas

TEMP. +76°

TOWNSHIP Providence

SECTION 6

T \_\_\_ R \_\_\_

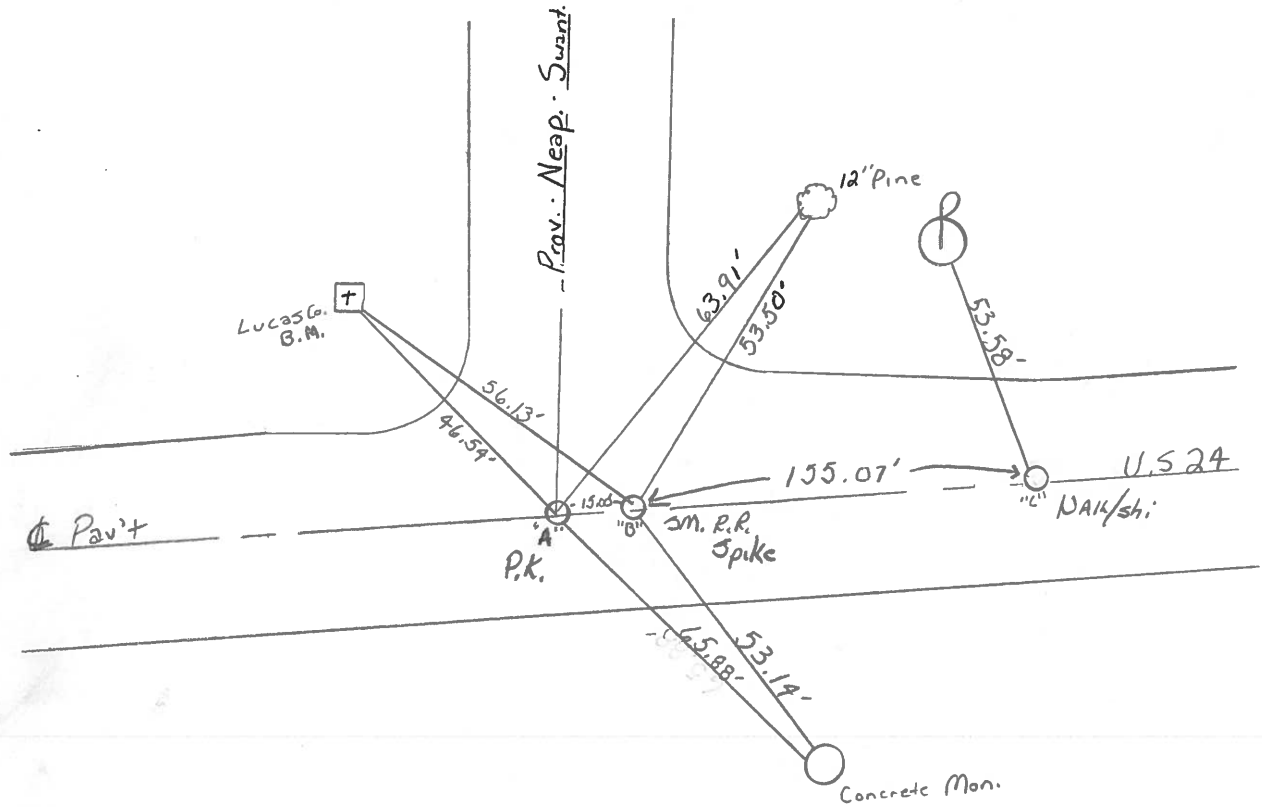
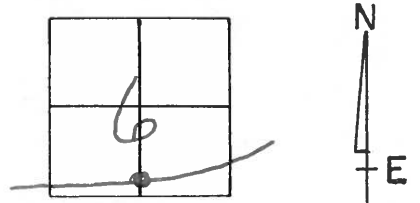
TYPE MONUMENT Pt B sm RR spike

ON SURFACE - ~~BELOW~~ yes

LEFT- & PAV'T. - RIGHT Yes

11.8 TO RT EDGE PAVEMENT

S.L.M. 28+98



Point A = Fd. Sm. RR spike / Reset  
P.K. & WASHER

Point B = Fd Sm. RR spike Reset  
P.I. Rec. Sta. 28+97.30

Pt C = Fd nail + shiner Reset

County LUCAS ~~SR~~ U.S. 24

Date 9 JUNE 1981

Township PROVIDENCE

Weather WARM

Section 6

Temp. 70°

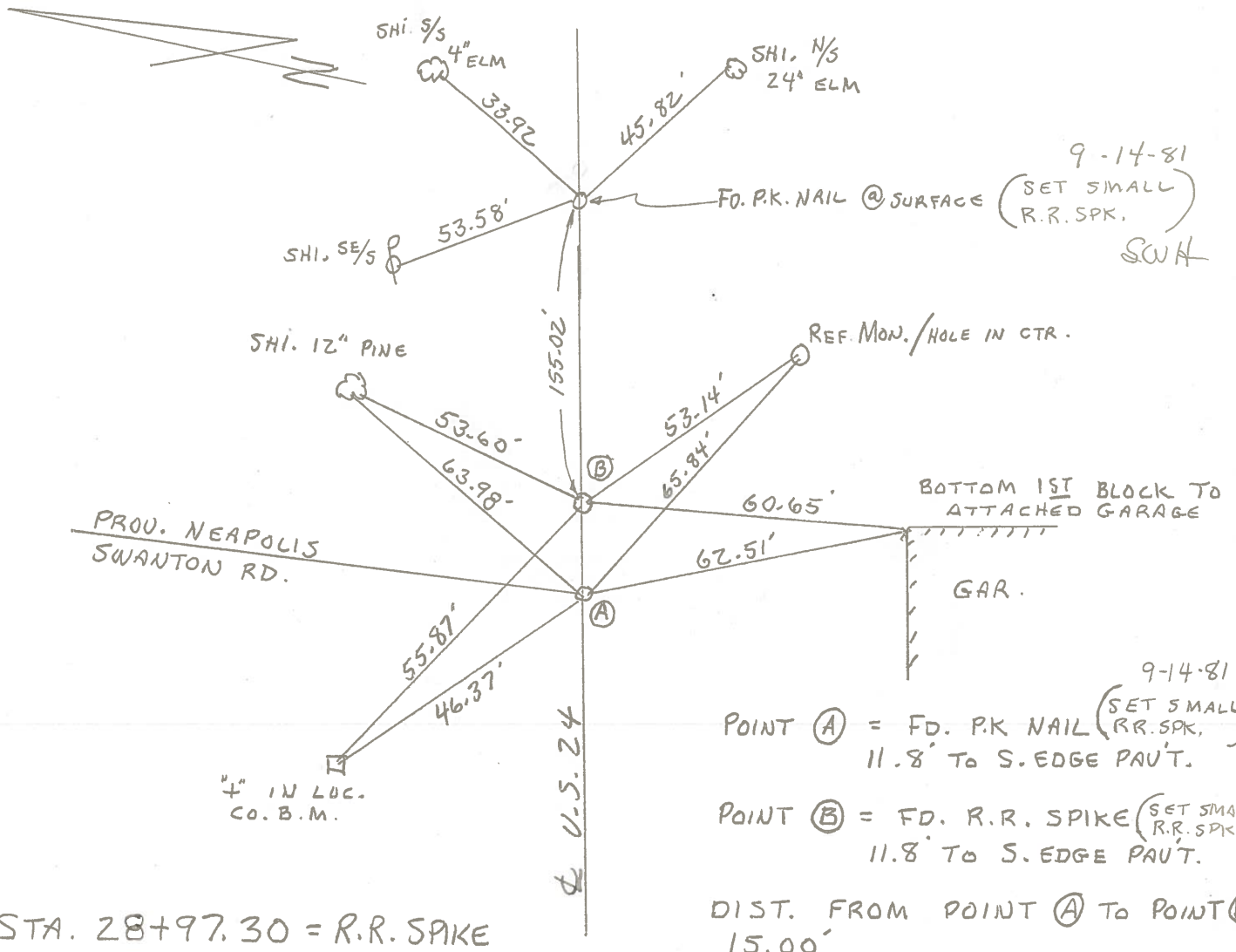
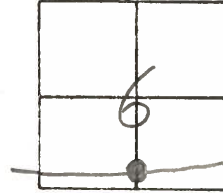
T N, R E

Personnel HOFFMAN

LOEHRKE

HOUSEHOLDER

2



STA. 28+97.30 = R.R. SPIKE

9-14-81  
 POINT (A) = FD. P.K. NAIL (SET SMALL R.R. SPK.)  
 11.8' TO S. EDGE PAVT.  
 POINT (B) = FD. R.R. SPIKE (SET SMALL R.R. SPK.)  
 11.8' TO S. EDGE PAVT.  
 DIST. FROM POINT (A) TO POINT (B)  
 15.00'

County Lucas S.R. US#24

Date 23 June 1980

Township Providence

Weather Warm

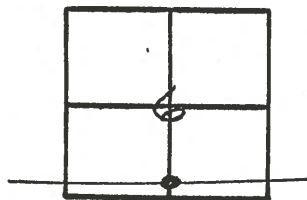
Section 6

Temp. 70°

T.N, R.E

Personnel L. Stone  
R. Michalak  
P. Neuser  
D. Curtis  
~~D. Gramer~~

2



30+52 ±  
Project STA.

shi 45  
4" elm  
33.92

REF. NO. 4202

shi x15 24" elm

PKE surface  
45.82

Fd. P.K. @ surface

53.58

shin, in 12"  
Pine tree

Red. Mon. / hole in ctr.

COPIED

PROV. NEAPOLIS  
SWANTON RD.

Bottom 1st block to  
attached garage

GAR.

" + LOC Co.  
BH

Point (A) = Fd. PK Nail ✓

11.8' to. S. edge put ✓

Point (B) = Fd. RR Spk. ✓

11.8' to. S. edge put ✓

Dist from Point (A) to Point (B) =  
15.00' ✓

Sta. 28+97.30 = RR Spk.

County Lucas S.R. US#24

Township Providence

Section 6

T    N, R    E

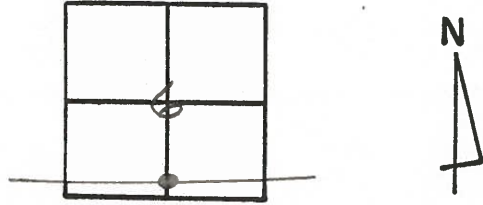
Personnel L. Stone  
R. Michalak  
P. Neuser  
D. Curtis  
D. Gramaty

2

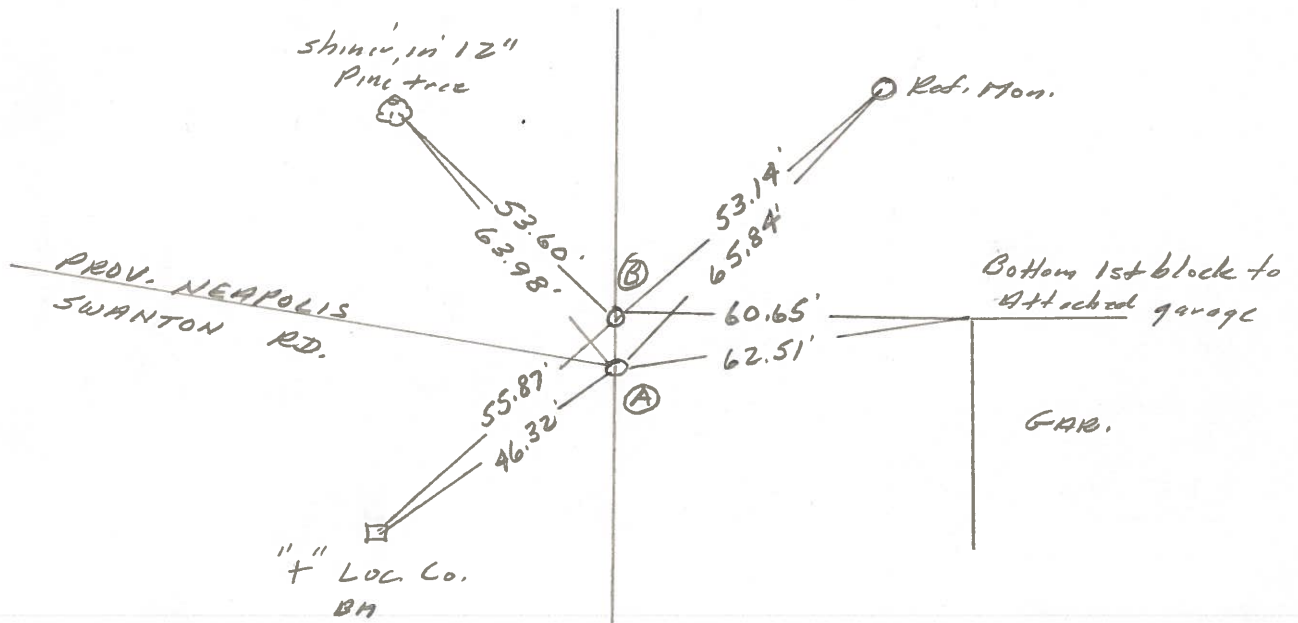
Date 23 June 1980

Weather Warm

Temp. 70°



REF. NO. 4202

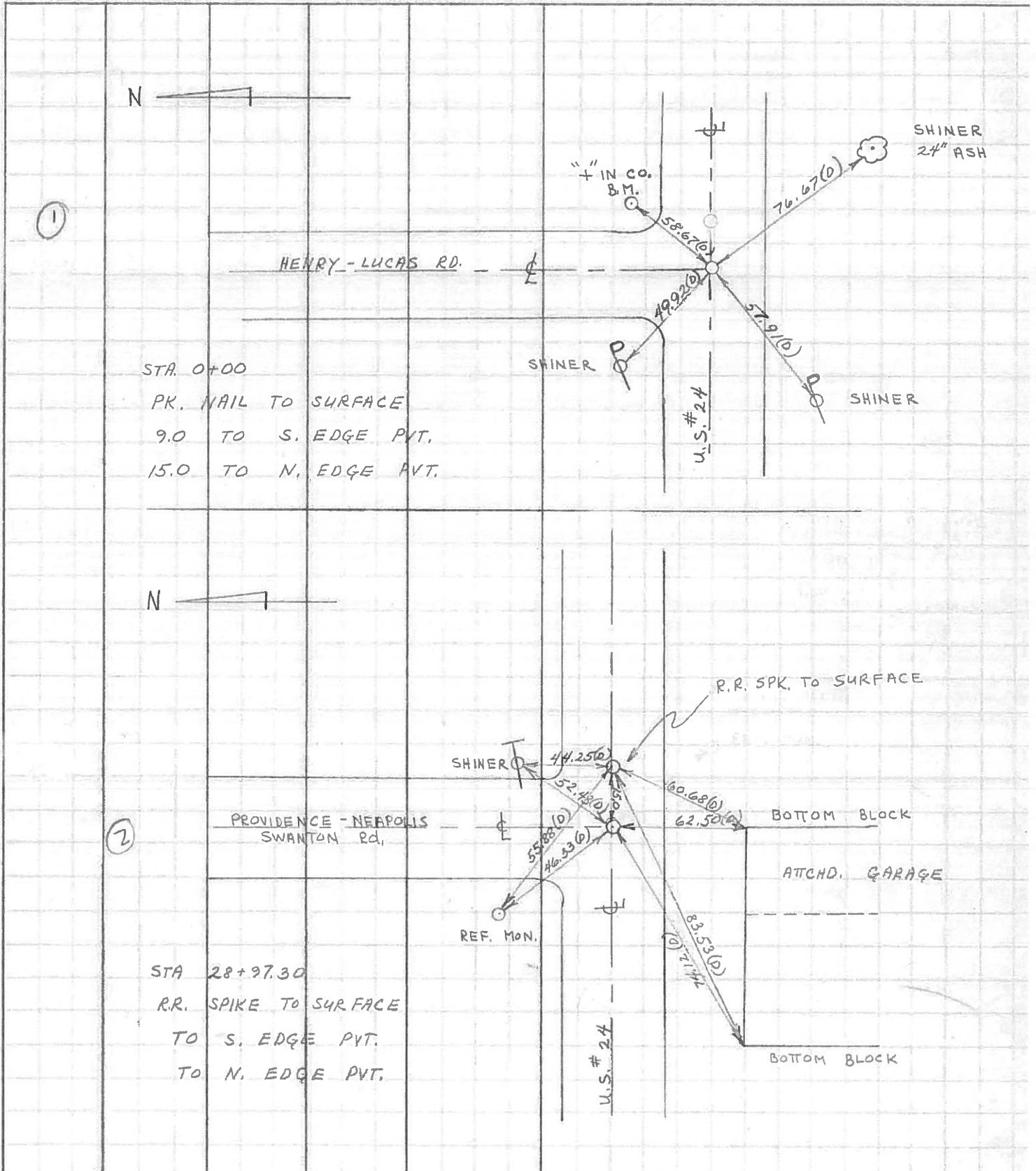


Sta. 28+97.30 = RR Spk.

Point (A) = Fd. PK Nail  
11.8' to. S. edge put.  
Point (B) = Fd. RR Spk.  
11.8' to. S. edge put  
Dist from Point (A) to Point (B) =  
15.00'

PERSONNEL	TITLE	PERSONNEL	TITLE	COUNTY	LUCAS	DATE	JUNE 71
W. DENNO				S. R.	US #24	WEATHER	HOT & CLOUDY
D. CURTIS				SEC.		TEMP.	85 ±
D. STEVENS							
R. BRANNAN							

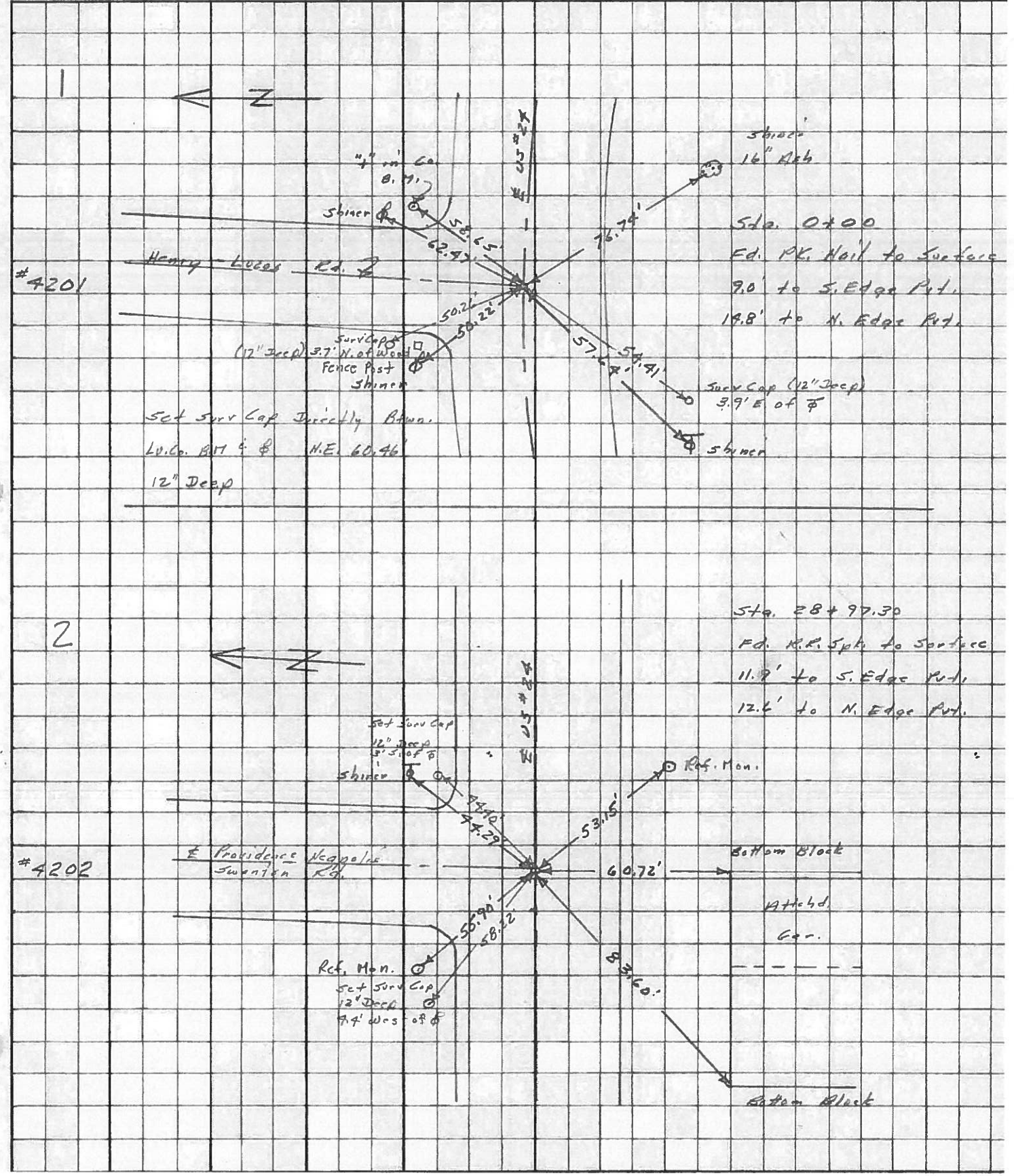
DESCRIPTION	REFERENCES TO CONTROL POINTS	JOB NO.
	LEFT CENTER LINE RIGHT	





PERSONNEL	TITLE	PERSONNEL	TITLE	COUNTY	DATE	WEATHER	TEMP.
Stone	Notes			Locas	May 68	Fair	
Beck	Flag			S. R. # 24			
Michalek	Tape			SEC.			
Scheeder	Tape						

DESCRIPTION References to Control Points JOB NO.



PERSONNEL TITLE PERSONNEL TITLE COUNTY Lucas DATE 1 Feb. 66  
 S. R. #24 WEATHER Cool  
 SEC. TEMP. 18°

DESCRIPTION Rats to Contact Points LEFT CENTER LINE RIGHT JOB NO.

0+00	= Harry - Lucas Co. line	62.47'	N.N.E. to Shiner in T.P. (D)
1	Ed. RR Nail to Surface	76.74'	S.E. to Shiner in 12" Ash (D)
		50.22'	N.W. to Shiner in P.P. (D)
		57.64'	S.W. to Shiner in P.P. (D)
28+9230	= Pontiac Rd. Ed. R.R. Spt.	55.90'	N.W. to Corn. Man (D)
2	to Surface	53.15'	S.E. to Corn. Man (D)
		44.29'	N.E. to Shiner in T.P. (D)
		60.72'	S. to N.E. Car. Lowest Block of Garage (D)
42+7635	= P.C. Set RR Nail	66.93'	N.E. to Shiner in T.P. (D)
3	to Surface	76.46'	S.E. to Shiner in 20" Twin Ash (D)
		85.48'	S.W. to Shiner in 18" Sycamore (D)
57+4635	= P.T. Ed. R.R. Spt.	52.31'	N.E. to Shiner in T.P. (D)
4	1/2" Below Surface	26.99'	S.E. to "X" on Street Along 1' Below T.
		25.75'	S.W. to "X" on " " " " " " " " (D)
60+9290	= P.C. Ed. RR Spt.	47.44'	N.W. to Shiner in T.P. (D)
5	to Surface	22.12'	S.E. to "X" on Street Along 5' Below
		23.25'	S.W. to "X" on " " " " " " " " (D)
6	Intersection of S.R. #24 & S.R. #578 (Grand Rapids Rd.) Ed. Man Box to Surface	84.20'	N.N.W. to Shiner in T.P. (D)
		62.87'	S.E. to Shiner in T.P. (D)
		122.93'	N.W. to Shiner in T.P. (D)
		58.84'	S.S.E. to Shiner in P.P. (D)



PERSONNEL TITLE PERSONNEL TITLE

Silvester \_\_\_\_\_ COUNTY Lucas DATE 1

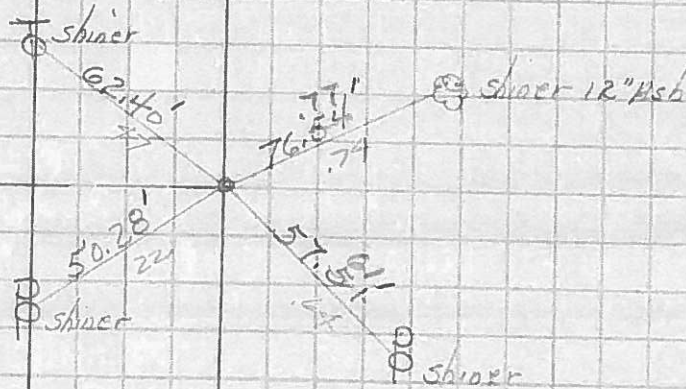
\_\_\_\_\_ S. R. # 24 WEATHER 1958

\_\_\_\_\_ SEC. He-Lu-Waterville TEMP 134-1963

\_\_\_\_\_ DESCRIPTION \_\_\_\_\_

LEFT CENTER LINE (0.00) RIGHT JOB NO. \_\_\_\_\_

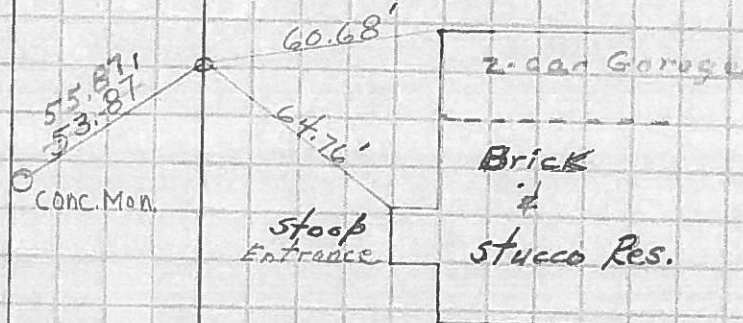
Sta. 0+00 He-Lu. line  
P.R. Spk. Set  
Found Pike Shiner  
8-14-63



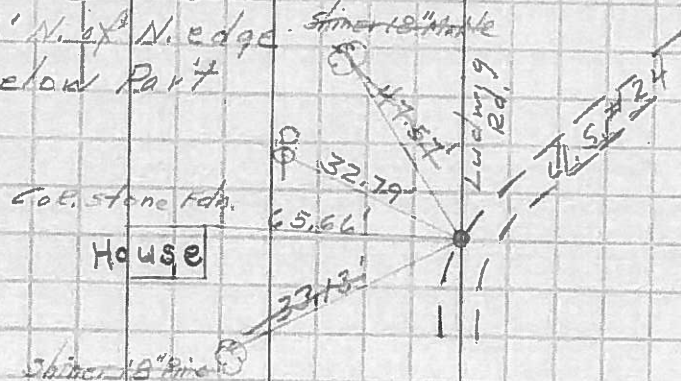
Sta. 28+97.30 Providence Pt.  
P.L. R.R. Spk. Fd  
8-14-63

2

995.29



Sta. 37+92.59 Iron Bolt  
Pn & Const. (6' N. x 3' N. edge)  
Part & 1' below Part



PERSONNEL TITLE PERSONNEL TITLE

COUNTY LUCAS

DATE 6-24-55

S. R. #24

WEATHER

SEC.

TEMP.

DESCRIPTION

Control Points

He-Lu. Co. line To Waterville

JOB NO.

Corp

