

O.D.O.T. DISTRICT 2 SURVEY OFFICE

PERSONNEL _____

REFERENCE NO. 4

SHEET 4 OF 68

NOTES Hoss

H.C. MOSER

R.C. VAN DUSEN

DATE 5-15-97

WEATHER cloudy/windy

TEMP. +48°F

ROUTE US-24

COUNTY Lucas

TOWNSHIP Providence

SECTION 5

T5 NR 8 E

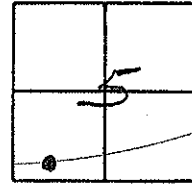
TYPE MONUMENT PK/W's A-B-C

ON SURFACE - BELOW YES

LEFT- & PAVT. - RIGHT A=0.5' B=0.0' C=0.0'

11.2 TO LT. EDGE PAVEMENT B-C=11.9 RT. EDGE

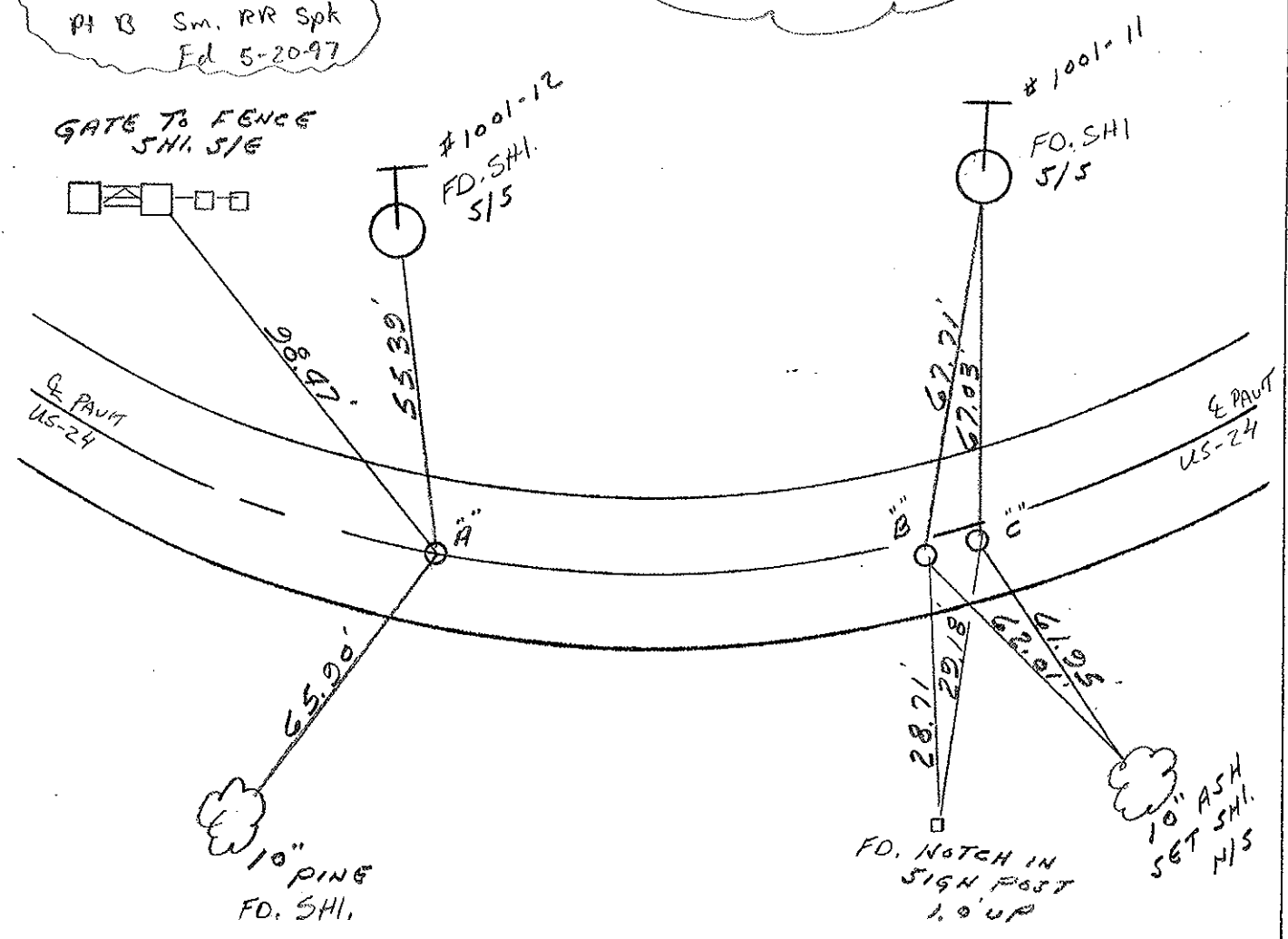
S.L.M. A=42+11 B=42+86



PT. A TO B = 75.04'
PT. B TO C = 0.96'

SET PK'S/WASHERS
10-20-97
JAH.

Record
Pt A PK/W
Pt B Sm. RR Spk
Ed 5-20-97



County LUCAS S.R. U.S. 24

Date 9 - JUNE 1981

Township PROVIDENCE

Weather WARM

Section 5

Temp. 72°

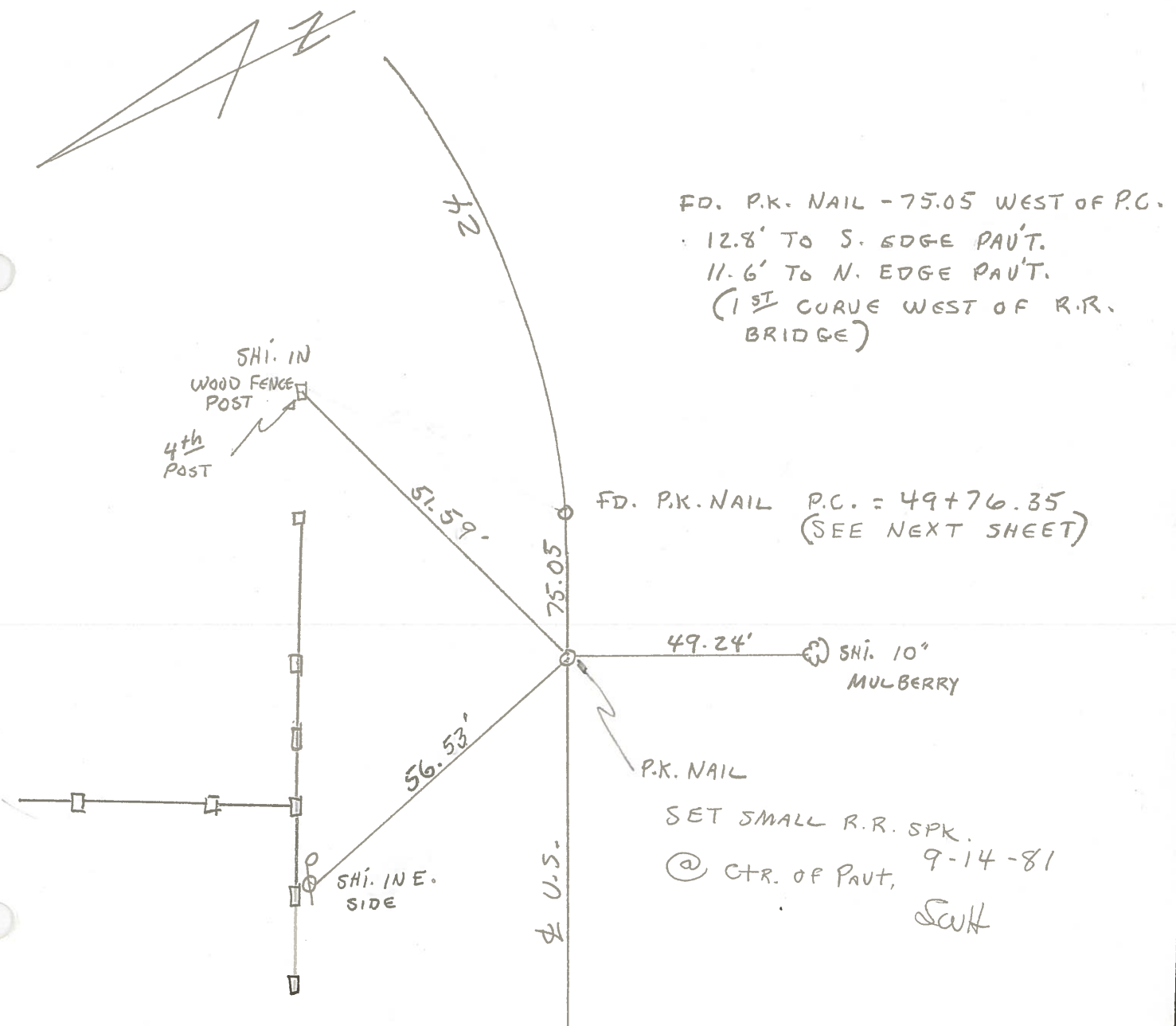
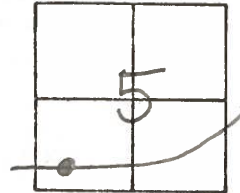
T N, R E

Personnel HOFFMAN

LOEHRKE

HOUSEHOLDER

4



FD. P.K. NAIL - 75.05 WEST OF P.C.
12.8' TO S. EDGE PAVT.
11.6' TO N. EDGE PAVT.
(1ST CURVE WEST OF R.R. BRIDGE)

FD. P.K. NAIL P.C. = 49+76.35
(SEE NEXT SHEET)

SET SMALL R.R. SPK.
@ CTR. OF PAVT, 9-14-81
SWH

S-TOMSLC

County LUCAS S.R. U.S. 24

Date 9 JUNE 1981

Township PROVIDENCE

Weather WARM

Section 5

Temp. 77°

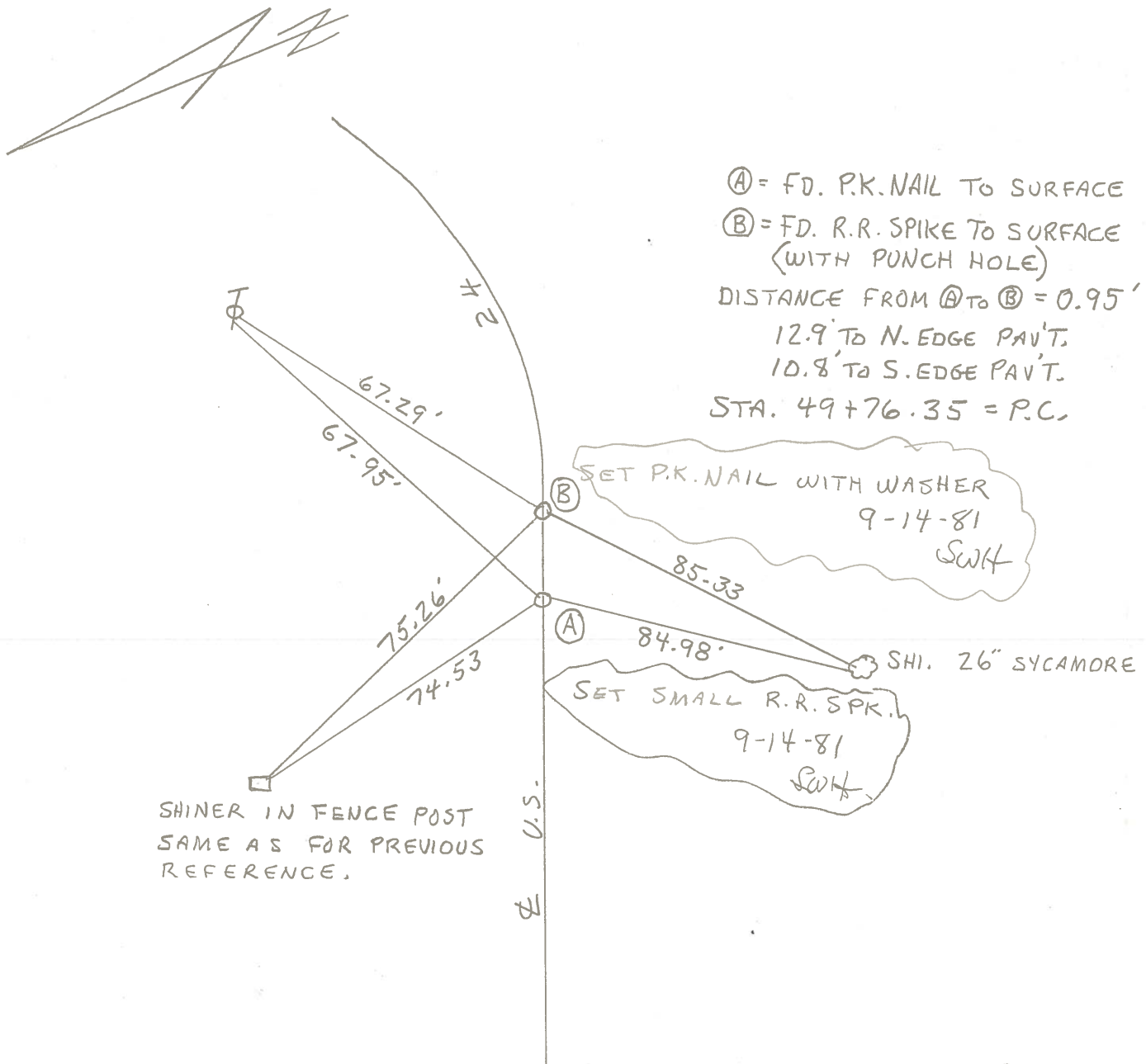
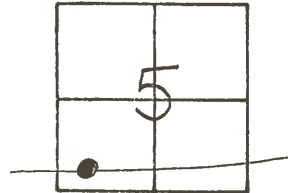
T N, R E

Personnel HOFFMAN

LOEHRKE

HOUSEHOLDER

4



Ⓐ = FD. P.K. NAIL TO SURFACE
Ⓑ = FD. R.R. SPIKE TO SURFACE
(WITH PUNCH HOLE)
DISTANCE FROM Ⓐ TO Ⓑ = 0.95'
12.9' TO N. EDGE PAV'T.
10.8' TO S. EDGE PAV'T.
STA. 49+76.35 = P.C.

SET P.K. NAIL WITH WASHER
9-14-81
SWH

SET SMALL R.R. SPK.
9-14-81
SWH

SHINER IN FENCE POST
SAME AS FOR PREVIOUS
REFERENCE.

County Lucas S.R. US#24

Date 23 June 1980

Township Providence

Weather Warm

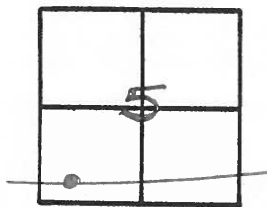
Section 5

Temp. 77°

T N, R E

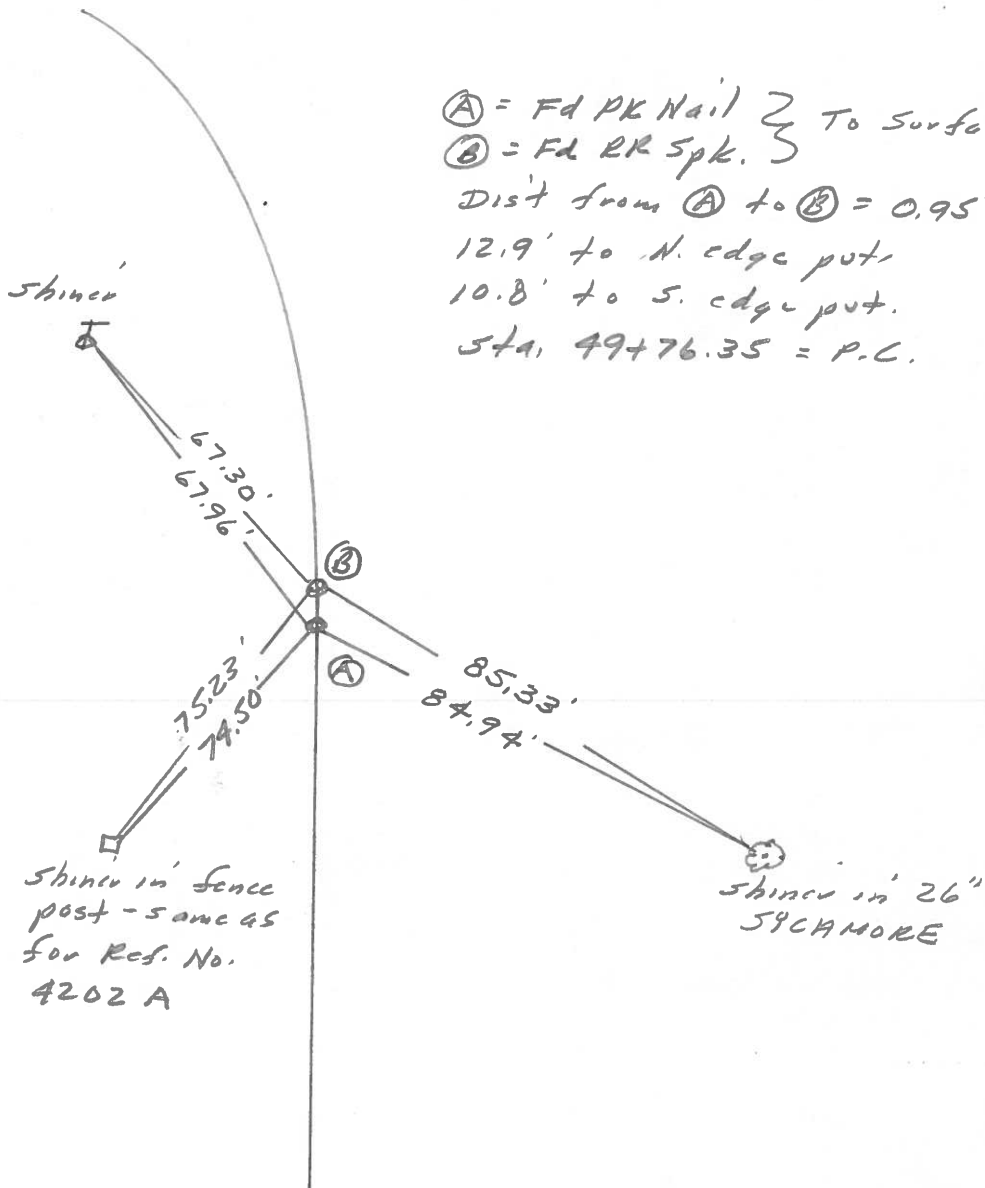
Personnel L. Stone
R. Michalak
P. Neuser
D. Curtis
D. Franola

4



REF. NO. 4203

Ⓐ = Fd PK Nail } To Surface
 Ⓑ = Fd RR Spk. }
 Dist from Ⓐ to Ⓑ = 0.95'
 12.9' to N. edge put.
 10.8' to S. edge put.
 STA. 49+76.35 = P.C.



X

PERSONNEL TITLE PERSONNEL TITLE

COUNTY LUCAS

DATE JULY 1, 1971

W. DENNO

D. CURTIS

D. STEVENS

S. R. US #24

WEATHER CLOUDY WARM

SEC.

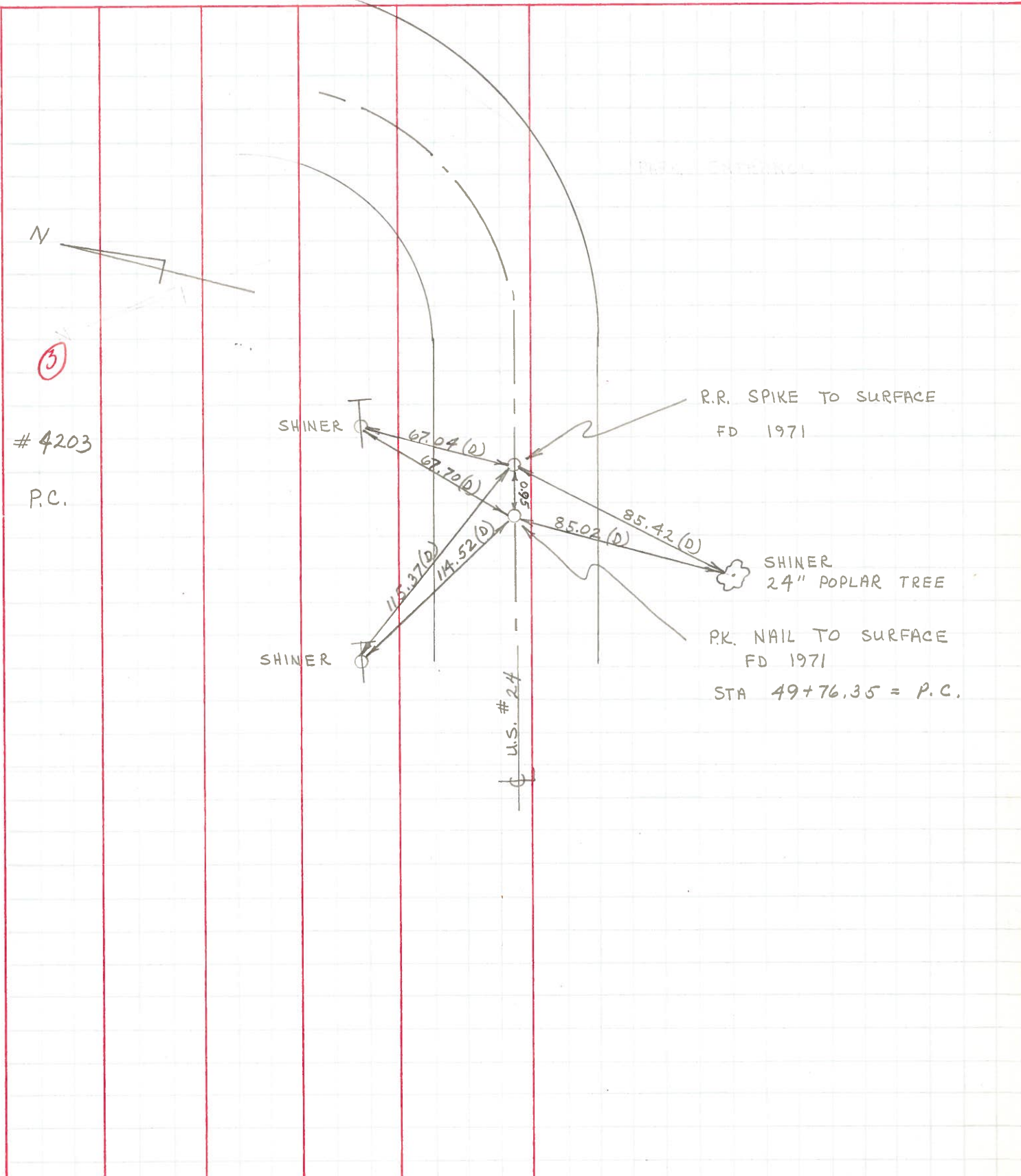
TEMP. 80±

DESCRIPTION REFERENCES To CONTROL POINTS JOB NO.

LEFT

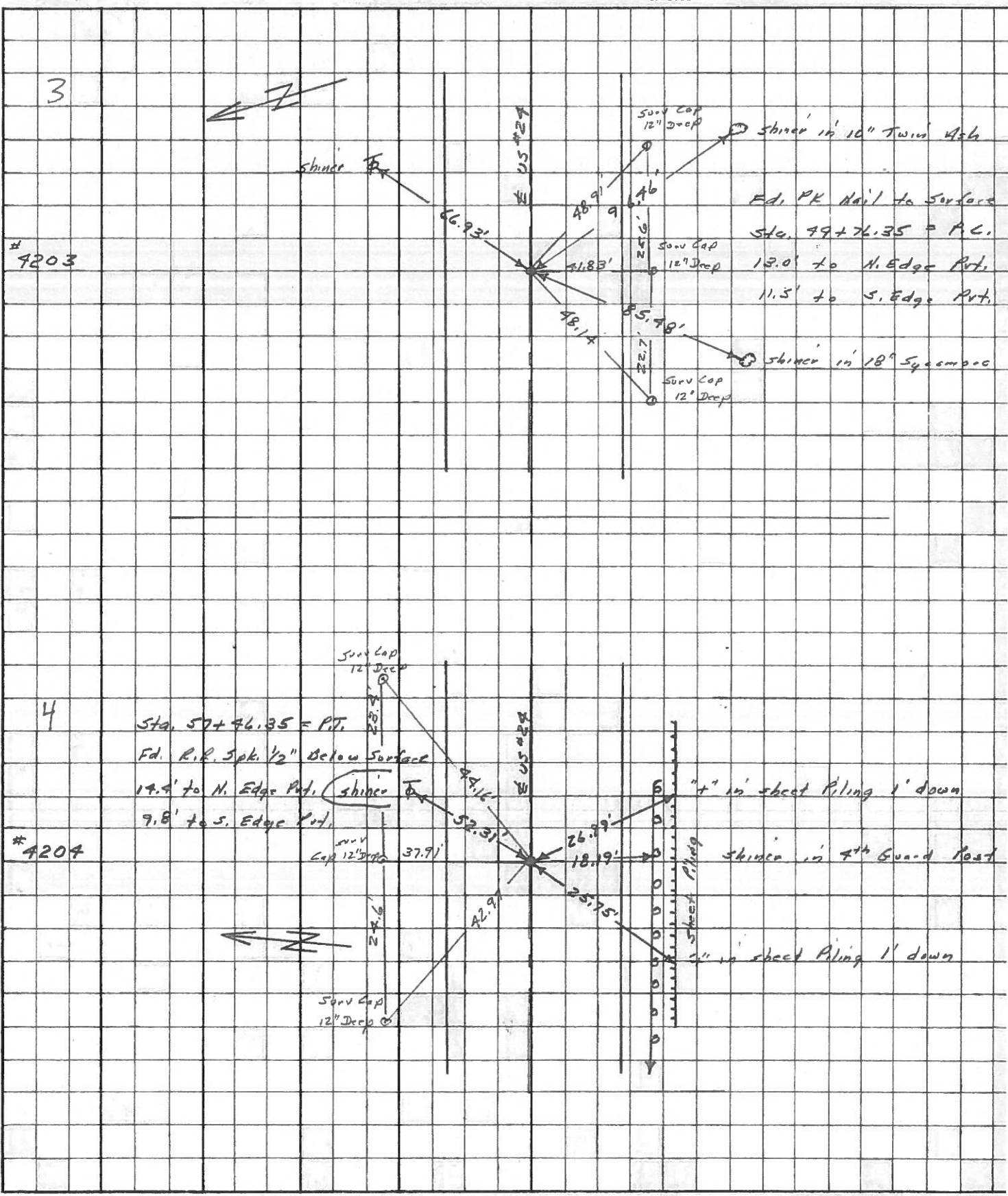
CENTER LINE

RIGHT



PERSONNEL	TITLE	PERSONNEL	TITLE	COUNTY	Lucas	DATE	May 68
Stone	Notes			S. R.	# 24	WEATHER	Fair
Beck	Flag			SEC.		TEMP.	
Michalek	Tape						
Schroder	Tape						

DESCRIPTION References to Control Points JOB NO. _____



PERSONNEL TITLE PERSONNEL TITLE COUNTY Lucas DATE 1 Feb. 66
 Stone Beck S. R. #27 WEATHER Cool
 Grindley Schroeder SEC. TEMP. 18°

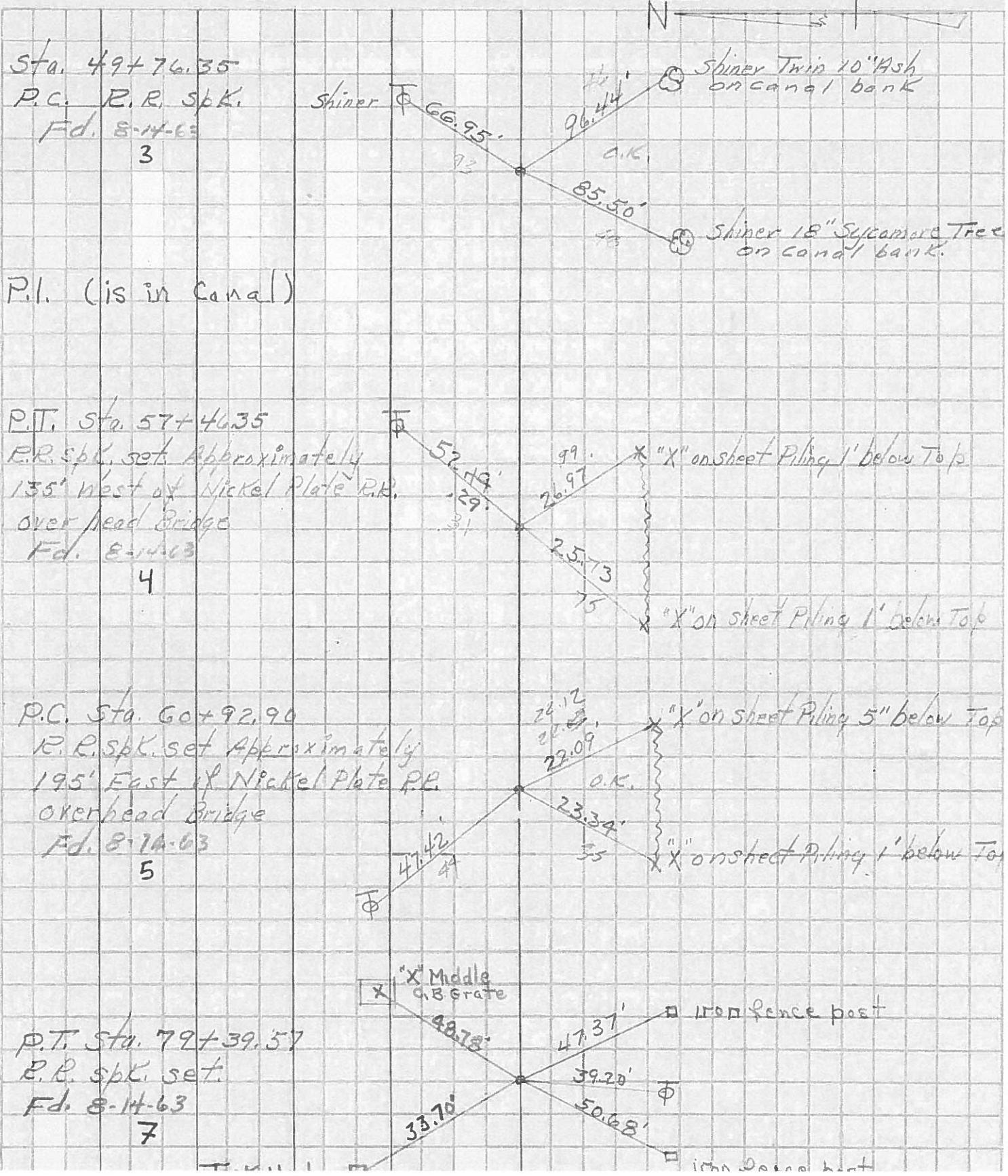
DESCRIPTION *Pots to Central Pointe* JOB NO.
 LEFT CENTER LINE RIGHT

0+00	= Henry - Lucas Co. line	62.47'	N.N.E. to Shiner in T.P. (D)
1	Ed. R.R. Nail to Surface	76.74'	S.E. to Shiner in 12" Ash (D)
		50.22'	N.W. to Shiner in P.P. (D)
		57.64'	S.W. to Shiner in P.P. (D)
28+9230	= Providence Rd. Ed. R.R. Spk. to Surface	55.90'	N.W. to Cor. Man (D)
2		53.15'	S.E. to Cor. Man (D)
		44.29'	N.E. to Shiner in T.P. (D)
		60.72'	S. to N.E. Cor. Lowest Block of Garage (D)
42+7635	= P.C. Set R.R. Nail to Surface	66.93'	N.E. to Shiner in T.P. (D)
3		76.96'	S.E. to Shiner in 10" Twin Ash (D)
		85.48'	S.W. to Shiner in 18" Sycamore (D)
57+4635	= P.T. Ed. R.R. Spk. 1/2" Below Surface	52.31'	N.E. to Shiner in T.P. (D)
4		26.99'	S.E. to "X" on Street Along 1' below T.P.
		25.75'	S.W. to "X" on " " " " " " " " (D)
60+9290	= P.C. Ed. R.R. Spk. to Surface	47.44'	N.W. to Shiner in T.P. (D)
5		22.12'	S.E. to "X" on Street Along 5' Below T.P.
		23.35'	S.W. to "X" on " " " " " " " " (D)
6	Intersection of S.R. # 24 & S.R. # 578 (Grand Rapids Rd) Ed. Man Box to Surface	84.20'	N.N.W. to Shiner in T.P. (D)
		62.87'	S.E. to Shiner in T.P. (D)
		122.93'	N.W. to Shiner in T.P. (D)
		58.84'	S.S.E. to Shiner in P.P. (D)

PERSONNEL	TITLE	PERSONNEL	TITLE	COUNTY	DATE
Silvester				Lucas	1958
+				S. R. #24	Blay 1963
Crew				SEC. He: Luc. - Waterville	TEMP.

DESCRIPTION LEFT CENTER LINE RIGHT JOB NO.

(0.00)



Sta. 49+76.35
P.C. R.R. Spk.
Fd. 8-14-63
3

P.I. (is in Canal)

P.T. Sta. 57+46.35
R.R. Spk. set. Approximately
135' West of Nickel Plate R.R.
over head bridge
Fd. 8-14-63
4

P.C. Sta. 60+92.90
R.R. Spk. set. Approximately
195' East of Nickel Plate R.R.
over head bridge
Fd. 8-14-63
5

P.T. Sta. 79+39.57
R.R. Spk. set.
Fd. 8-14-63
7