

O.D.O.T. DISTRICT 2 SURVEY OFFICE

PERSONNEL

REFERENCE NO. 5

SHEET 5 OF 68

NOTES Huss

H.C. VAN DUSEN

DATE 5-20-97

ROUTE US-24

R.C. MOSEER

WEATHER PTLY CLOUDY

COUNTY Lucas

TEMP. +61° F

TOWNSHIP Providence

SECTION 5

T. 5 N R. 8 E

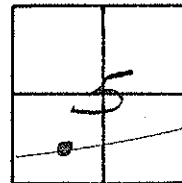
TYPE MONUMENT PK/W's A+B

"A" ON SURFACE - BELOW YES

"A" LEFT- & PAV'T. - RIGHT A=2.7 B=1.8 RT. &

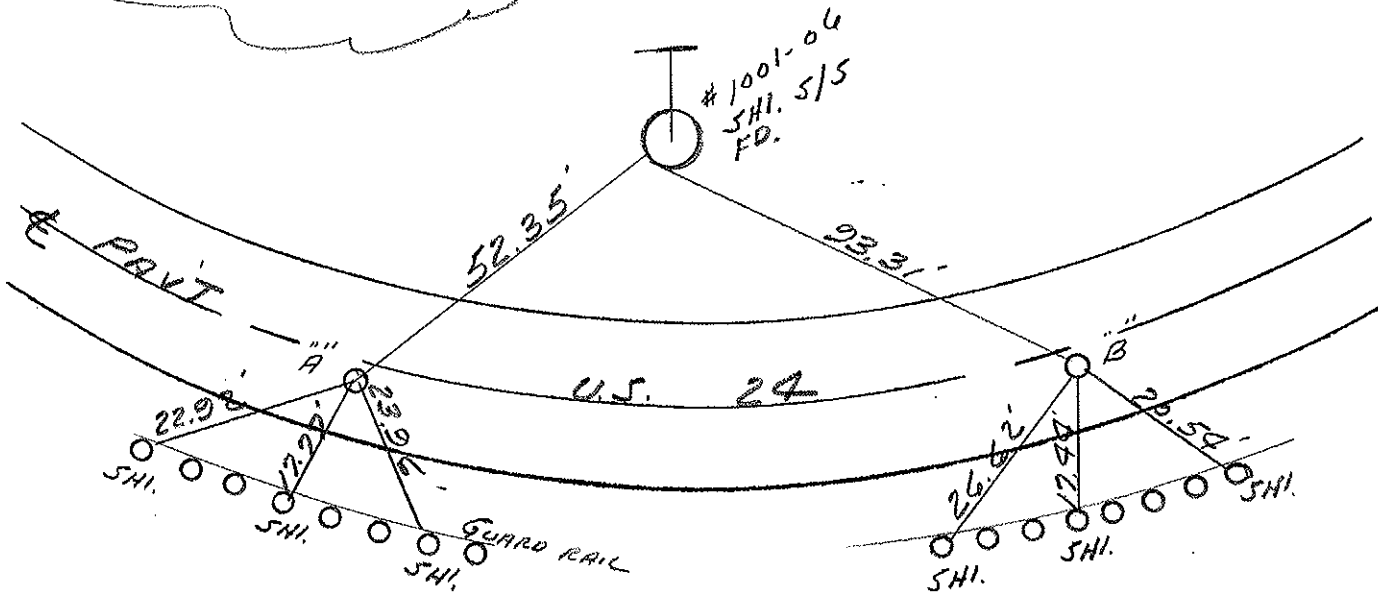
"A" 9.5 TO RT. EDGE PAVEMENT B=10.4 RT. EDGE

S.L.M. A=57+58 B=58+70



PT. "A" 3M RR. SPIKE ON SURFACE
 PT. "B" 3M RR. SPIKE ON SURFACE (6-1-93) RECORD

SET PK'S/WASHERS
 10-20-97
 SAH



O.D.O.T. DISTRICT 2 SURVEY OFFICE

PERSONNEL _____

REFERENCE NO. 5

SHEET 5 OF _____

NOTES LOEHRKE

H.C. ROMETO

R.C. CANTERBURY

BARNHISEL

DATE 6-1-93

WEATHER Clear

TEMP. +60

ROUTE U.S. 24

COUNTY Lucas

TOWNSHIP Providence

SECTION 5

T _____ R _____

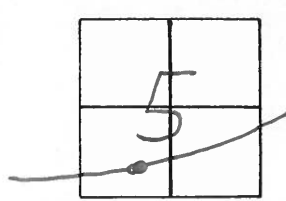
TYPE MONUMENT _____

ON SURFACE - BELOW Yes

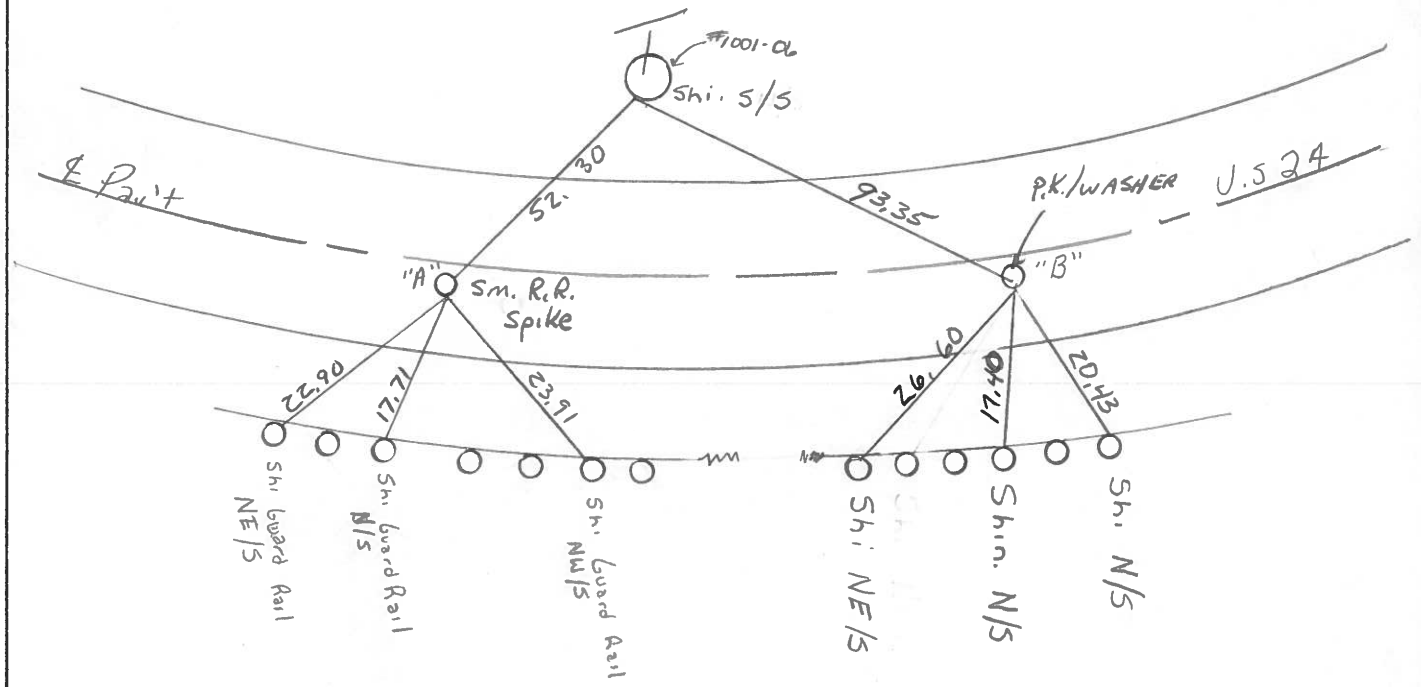
LEFT-CL PAV'T. - RIGHT A=2.9 Rt B=2.2 Rt

TO _____ EDGE PAVEMENT

S.L.M. 57+40 58+66



Pt. "A" → Lg. R.R Spike 2" below Surface / RESET Sm. RR Spike
 Pt. "B" → Small R.R Spike → On Surface / RESET P.K. / WASHER
 7-8-93
 C.L.



County LUCAS ~~S.R.~~ U.S.-24

Date 9 JUNE 1981

Township PROVIDENCE

Weather WARM

Section 5

Temp. 77°

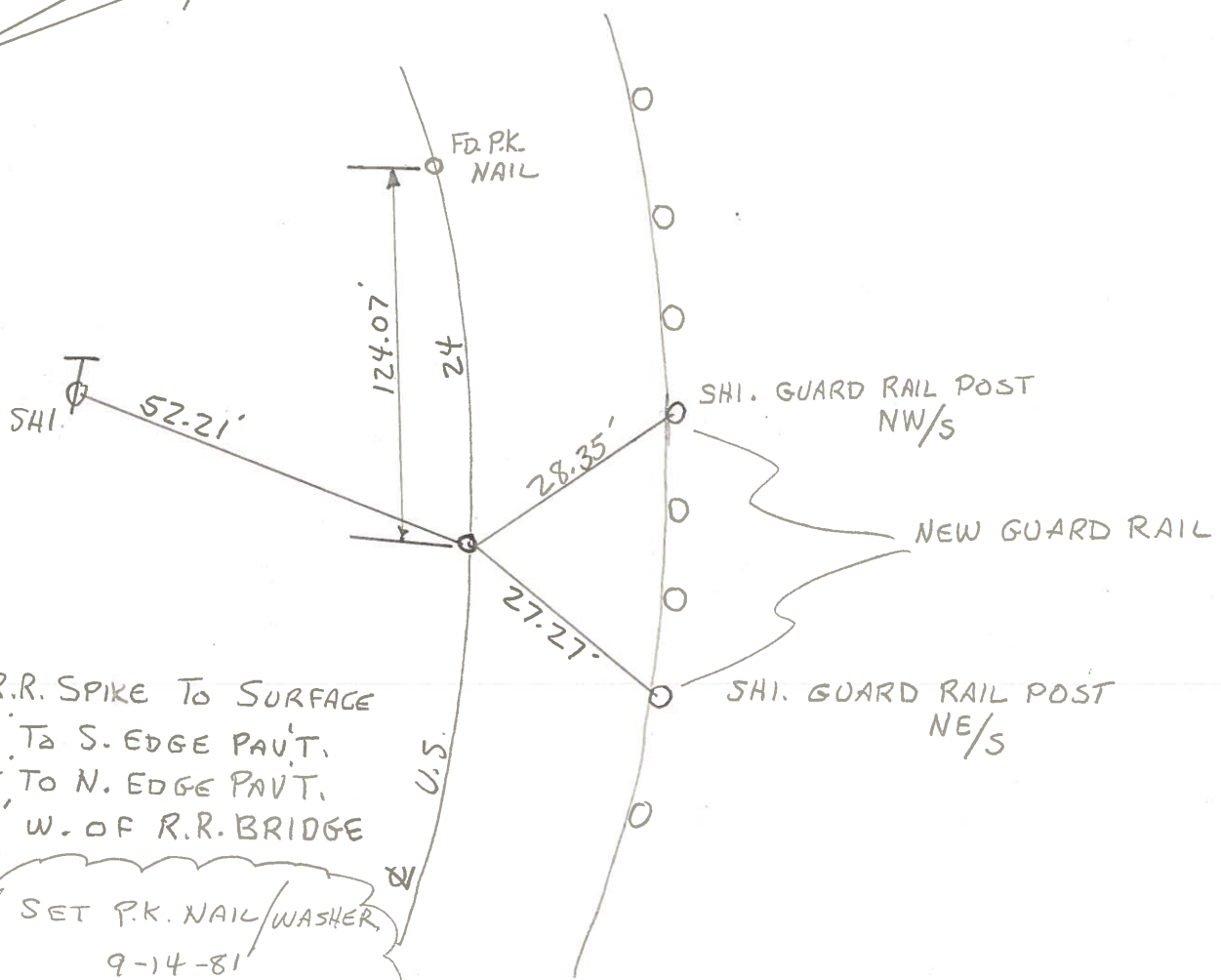
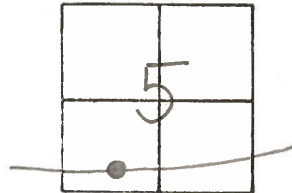
T N, R E

Personnel HOFFMAN

5

LOEHRKE

HOUSEHOLDER



FD. R.R. SPIKE TO SURFACE
9.3' To S. EDGE PAV'T.
14.4' To N. EDGE PAV'T.
143' W. OF R.R. BRIDGE

SET P.K. NAIL/WASHER
9-14-81
2.7' S. OF ϕ
SWH

County LUCAS S.R. U.S. 24

Date 9 JUNE - 1981

Township PROVIDENCE

Weather CLOUDY

Section 5

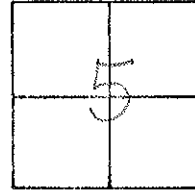
Temp. 75°

T_N, R_E

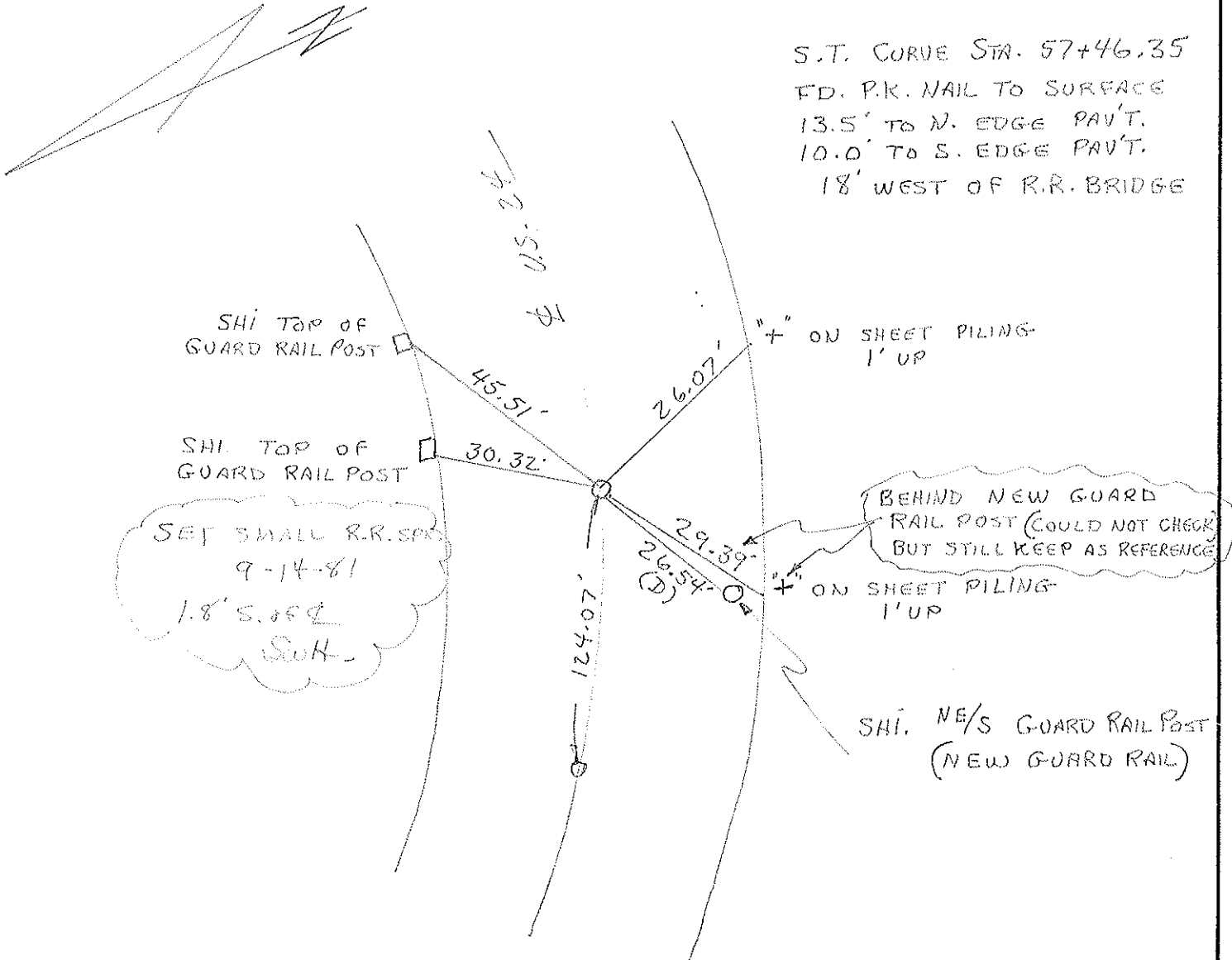
Personnel HOFFMAN

LOHRKE

HOUSEHOLDER



S.T. CURVE STA. 57+46.35
FD. P.K. NAIL TO SURFACE
13.5' TO N. EDGE PAV'T.
10.0' TO S. EDGE PAV'T.
18' WEST OF R.R. BRIDGE



County Lucas US # 24

Township Providence

Section 5

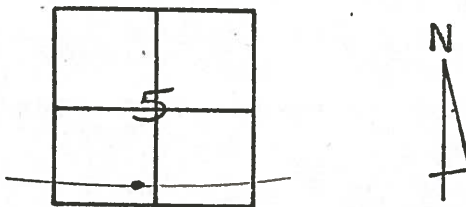
T N, R E

Personnel I. Stone
R. Michalak
P. Neuser
D. Curtis

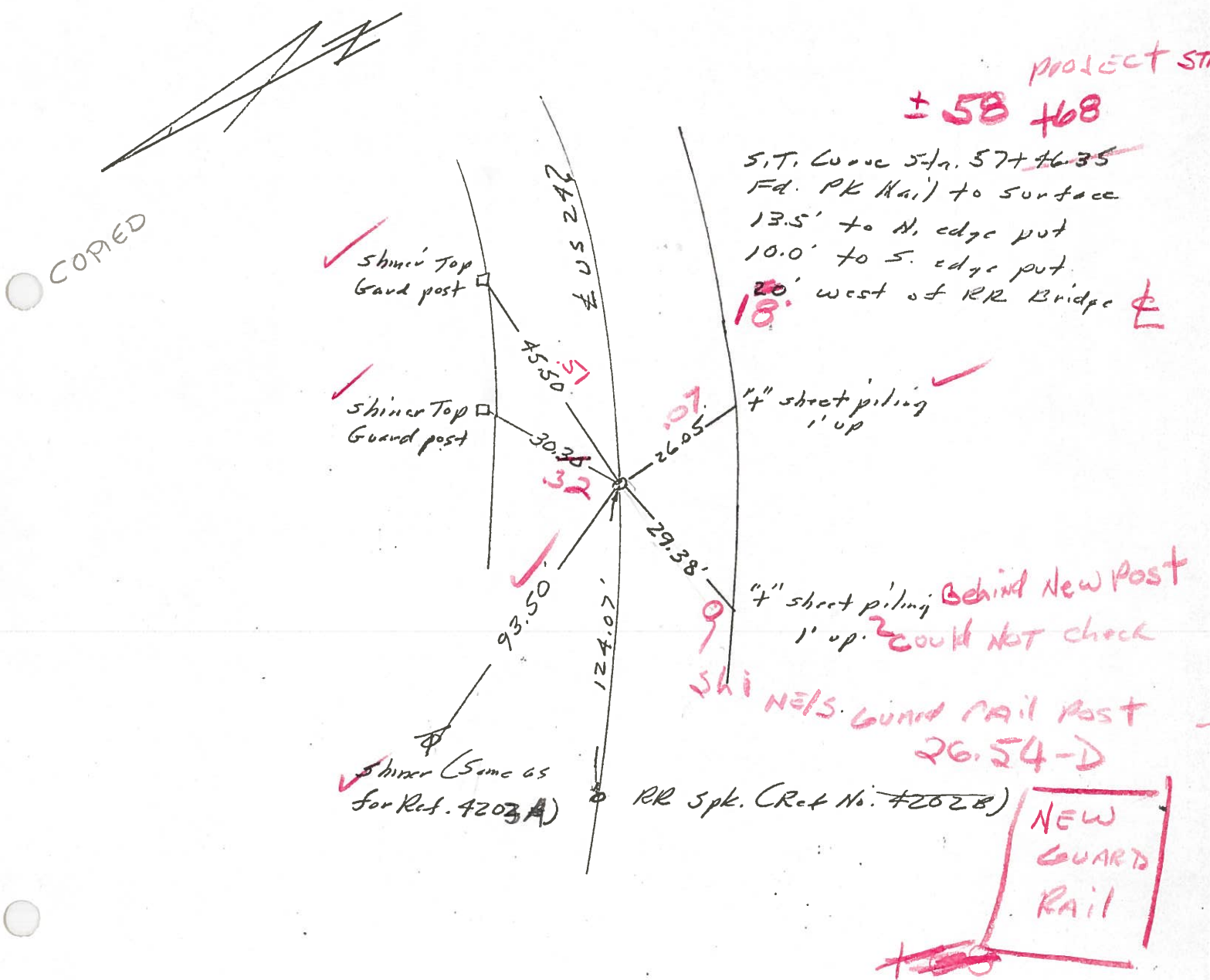
Date 23 June 1980

Weather Warm

Temp. 77°



REF. NO. 4204



PROJECT STA

± 58 ± 68

S.T. Lucas Sta. 57+46.35
 Fd. PK Nail to surface
 13.5' to N. edge put
 10.0' to S. edge put
 20' west of RR Bridge

4" sheet piling
 1' up

4" sheet piling Behind New Post
 1' up. ² could not check

SHINERS Guard Rail Post
 26.54-D

RR Spk. (Ref No. 4202B)

NEW
 GUARD
 RAIL

County Lucas S.R. US#24

Date 23 June 1980

Township Providence

Weather Warm

Section 5

Temp. 77°

T N, R E

Personnel L. Stone

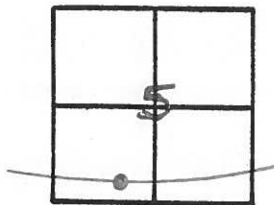
R. Michalak

P. Heuser

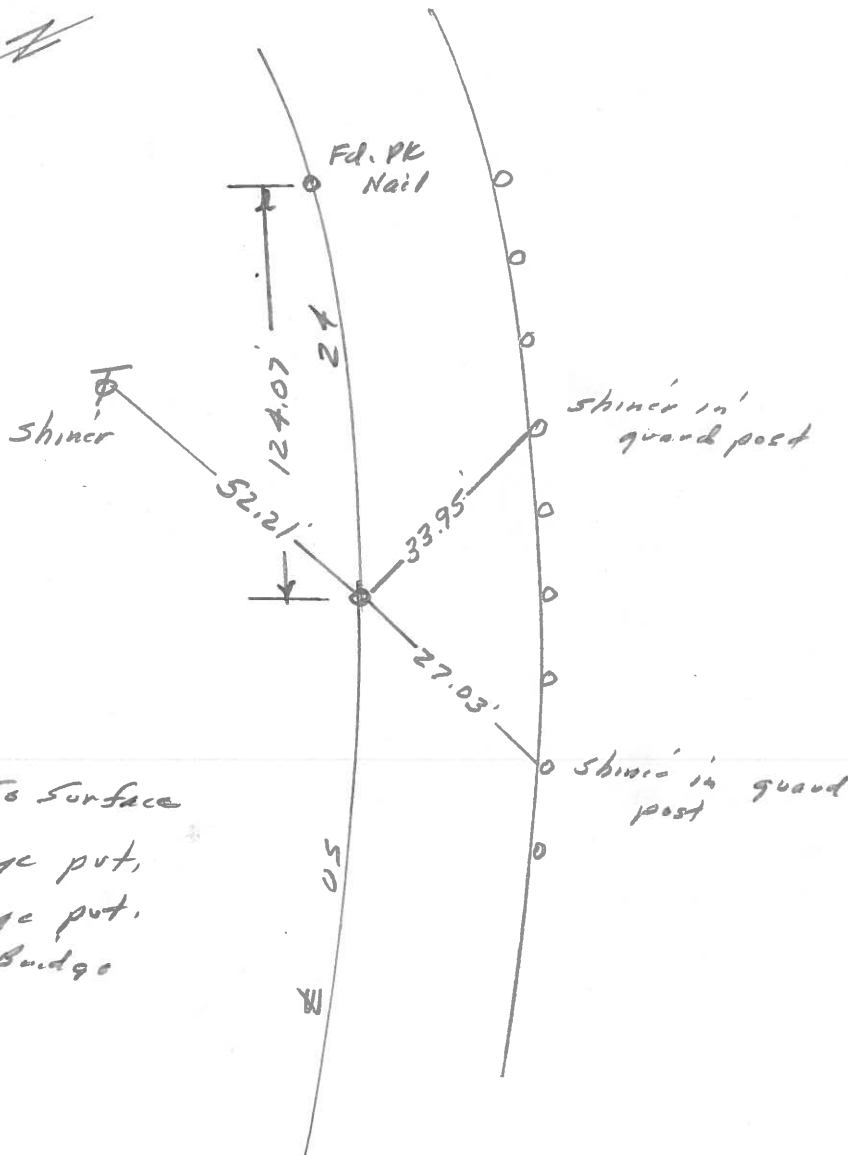
D. Curtis

D. Granata

5



REF. NO. 4203 A



Fd. RR Spk. To Surface
9.3' to S. edge put,
14.4' to N. edge put,
145' W. of RR Bridge

County LUCAS S.R. U.S. 24

Date 9 JUNE 1981

Township PROVIDENCE

Weather CLOUDY

Section 5

Temp. 75°

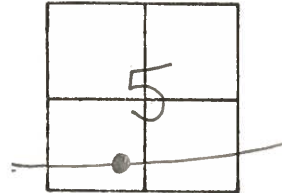
T N, R E

Personnel HOFFMAN

LOEHRKE

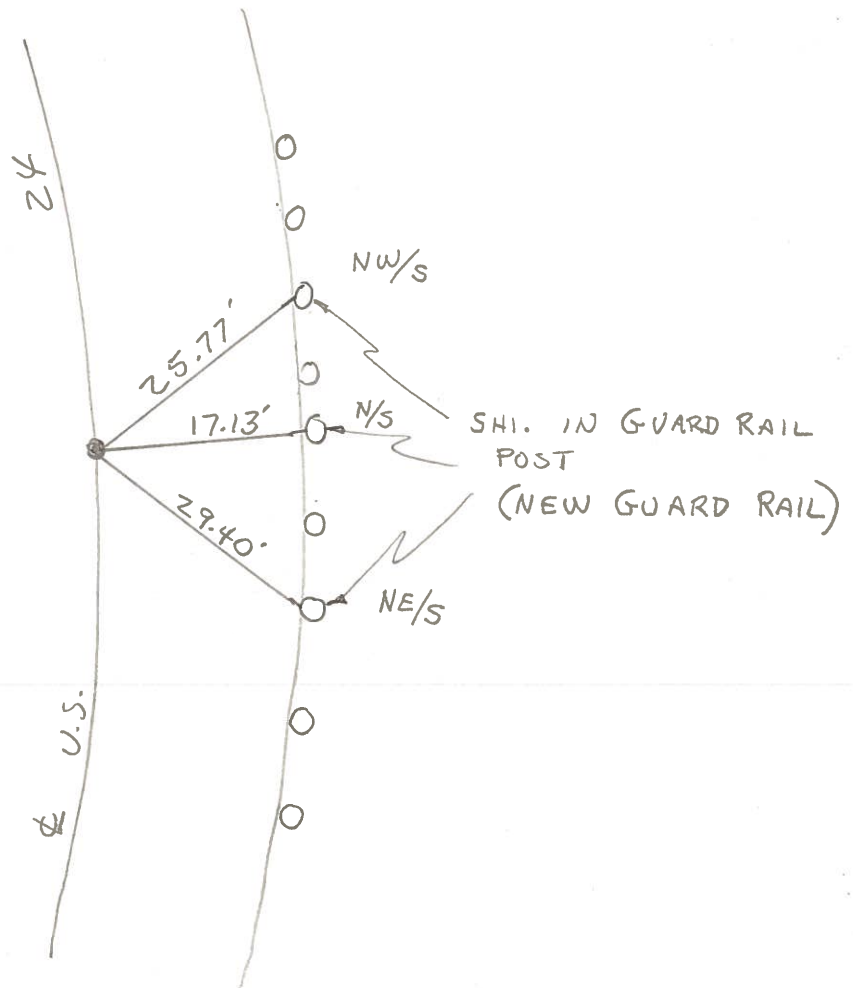
HOUSEHOLDER

5



THIS POINT WAS NOT COVERED WITH ASPHALT

SET P.K. NAIL AS PER REFERENCES.
 STA. 604+92.90 = P.C.
 17.7' TO N. EDGE PAV'T.
 8.5' TO S. EDGE PAV'T.
 ± 200' E. OF & R.R. BRIDGE
 ± 20' S. OF & PAV'T.



County LUCAS S.R. US #24

Date 23 June 1980

Township Providence

Weather Warm

Section 5

Temp. 79°

T N, R E

Personnel L. Stone

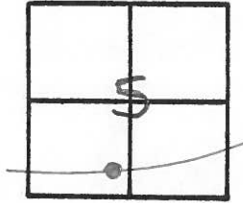
5

R. Michalak

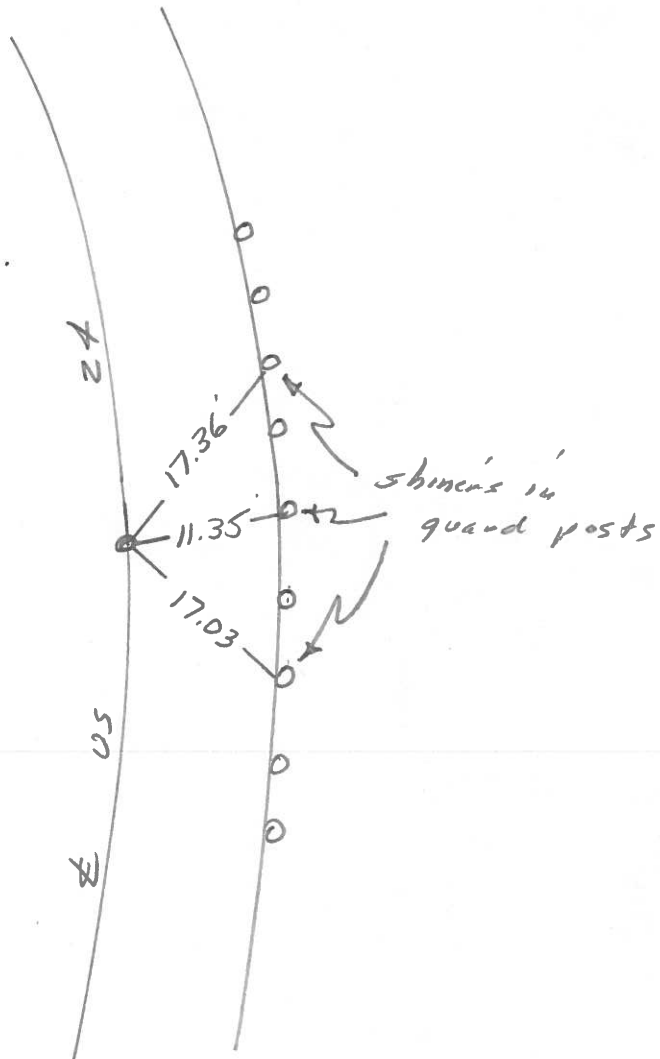
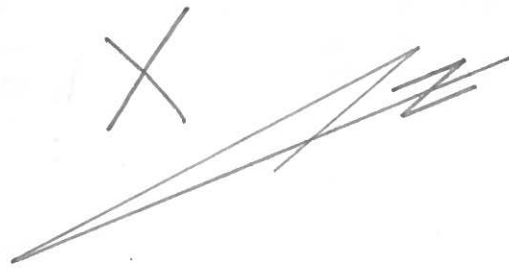
P. Neuser

D. Curtis

~~D. Grandy~~



REF. NO. 4205



Set PK Nail as per
References.

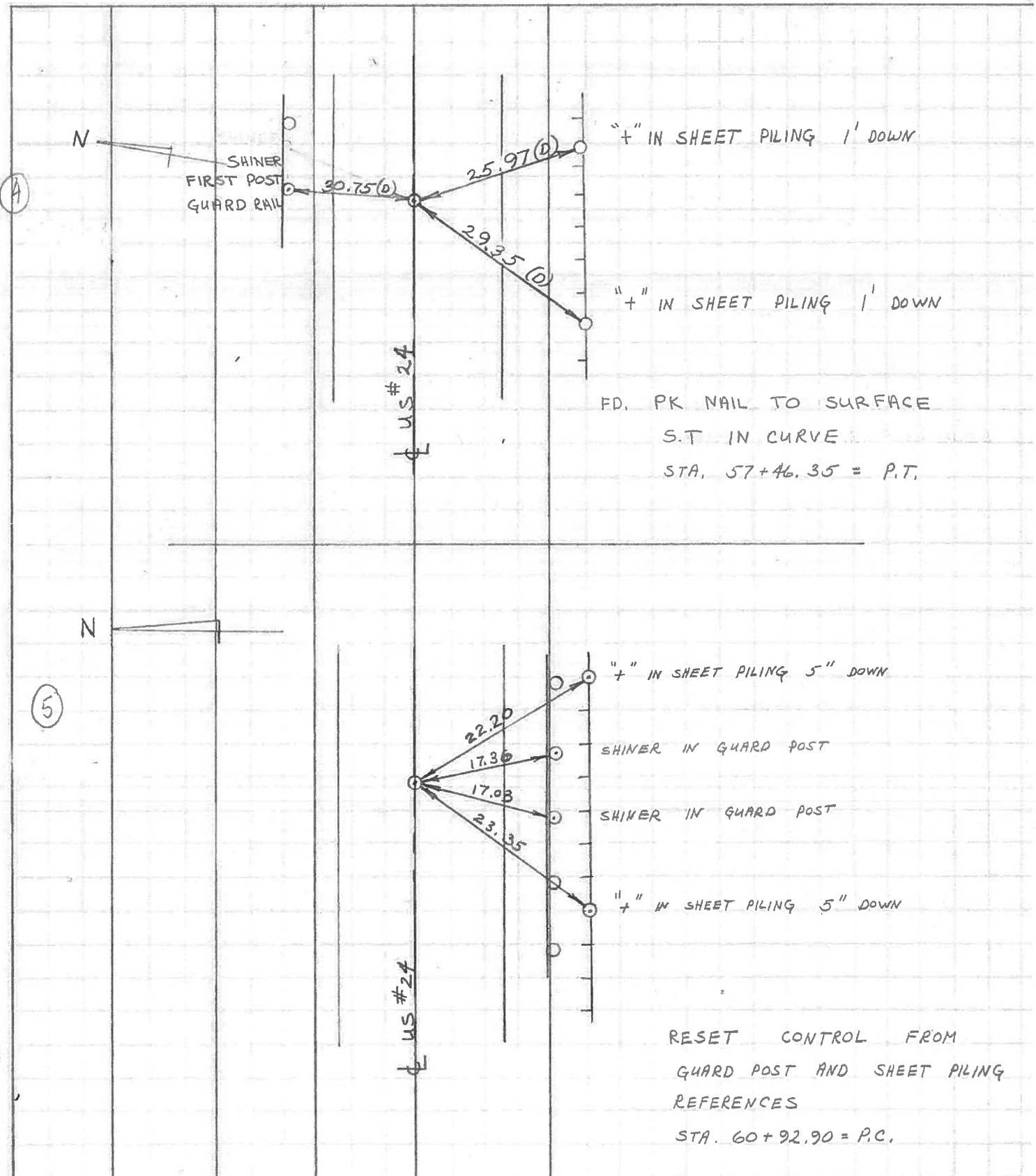
Sta. 60+92.90 = P.C.

26.2' to N. edge put.

3.9' to S. edge put.

PERSONNEL	TITLE	PERSONNEL	TITLE	COUNTY	DATE
W. DENNO				LUCAS	JULY 1 1971
D. CURTIS				S. R. US #24	WEATHER WARM CLOUDY
D. STEVENS				SEC.	TEMP. 80 ±

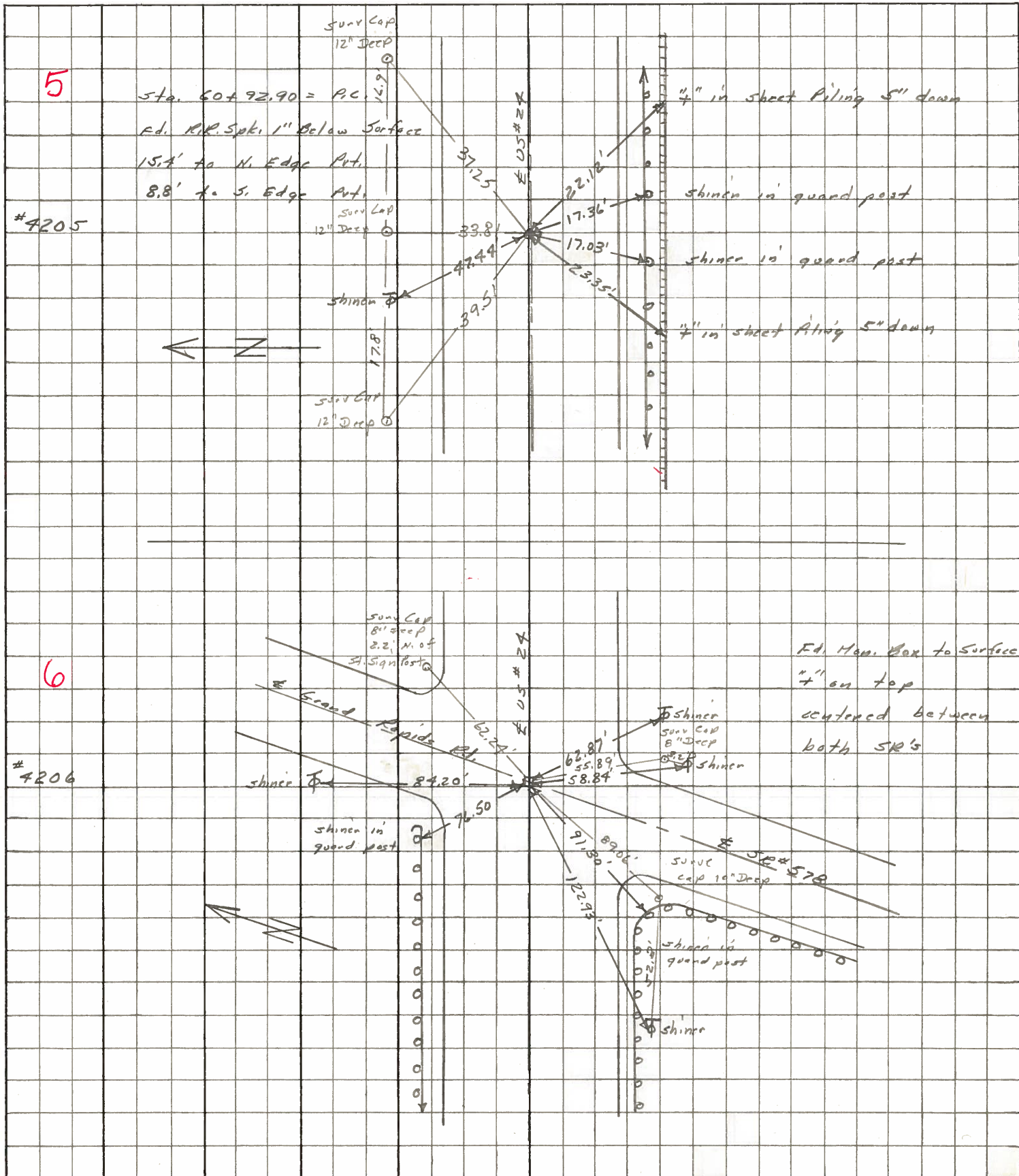
DESCRIPTION _____ REFERENCES TO CONTROL POINTS _____ JOB NO. _____
 LEFT CENTER LINE RIGHT



PERSONNEL	TITLE	PERSONNEL	TITLE
Stone	Notes		
Beck	Flag		
Michalak	Tape		
Schroeder	Tape		

COUNTY Lucas DATE May 68
 S. R. #24 WEATHER Fair
 SEC. _____ TEMP. _____

DESCRIPTION References to Control Points JOB NO. _____
 LEFT CENTER LINE RIGHT



PERSONNEL TITLE PERSONNEL TITLE COUNTY Lucas DATE 1 Feb. 66
 Stone Beck Grindby Schroeder S. R. #24 WEATHER Cool
 SEC. TEMP. 18°

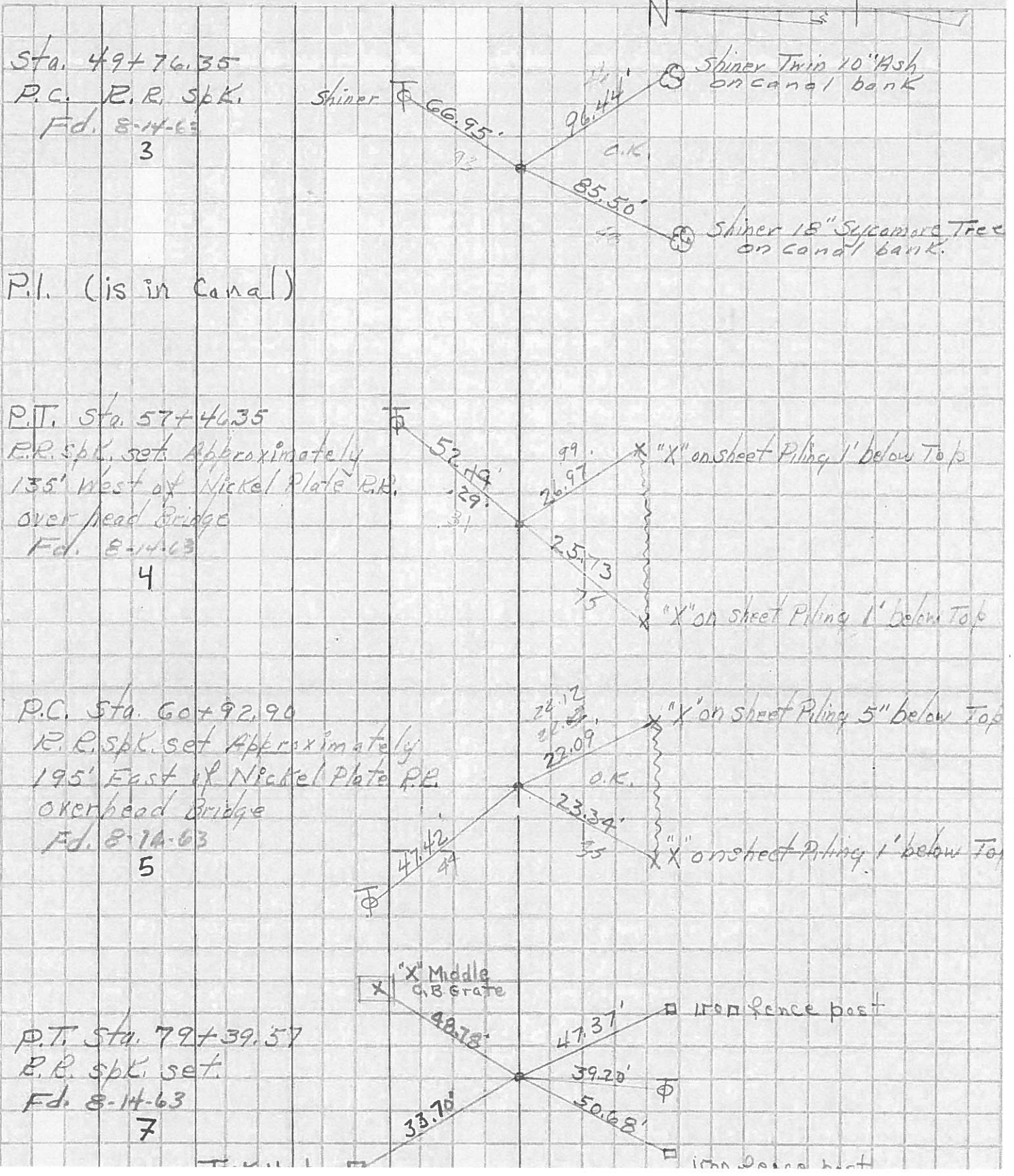
DESCRIPTION *Pits to Central Points* JOB NO.
 LEFT CENTER LINE RIGHT

0+00	= Henry - Lucas Co. line	62.97'	N.N.E. to Shiner in T.P. (D)
1	Ed. R.R. Nail to Surface	76.74'	S.E. to Shiner in 12" Ash (D)
		50.22'	N.W. to Shiner in P.P. (D)
		57.64'	S.W. to Shiner in P.P. (D)
28+9230	= Providence Rd.	55.90'	N.W. to Corn. Man. (D)
2	Ed. R.R. Spk. to Surface	53.15'	S.E. to Corn. Man. (D)
		44.29'	N.E. to Shiner in T.P. (D)
		60.72'	S. to N.E. Cor. Lowest Block of Garage (D)
92+7635	= P.C.	66.93'	N.E. to Shiner in T.P. (D)
3	Set R.R. Nail to Surface	76.46'	S.E. to Shiner in 10" Twin Knob (D)
		85.48'	S.W. to Shiner in 18" Sycamore (D)
57+4635	= P.T.	52.31'	N.E. to Shiner in T.P. (D)
4	Ed. R.R. Spk. 1/2" Below Surface	26.99'	S.E. to "X" on Street Along 1' below T.
		25.75'	S.W. to "X" on " " " " " " (D)
60+9290	= P.C.	47.44'	N.W. to Shiner in T.P. (D)
5	Ed. R.R. Spk. to Surface	22.12'	S.E. to "X" on Street Along 5' Below
		23.35'	S.W. to "X" on " " " " " " (D)
6	Intersection of S.R. # 24 & S.R. # 578 (Grand Rapids Rd.)	84.20'	N.N.W. to Shiner in T.P. (D)
		62.87'	S.E. to Shiner in T.P. (D)
		122.93'	N.W. to Shiner in T.P. (D)
	Ed. Man. Box to Surface	58.84'	S.S.E. to Shiner in P.P. (D)

PERSONNEL	TITLE	PERSONNEL	TITLE
Silvester			
+			
Crew			

COUNTY Lucas DATE 1958
 S. R. #24 WEATHER Bluy 1963
 SEC. He-Luc.-Waterville TEMP. (0.00)

DESCRIPTION LEFT CENTER LINE RIGHT JOB NO.



Sta. 49+76.35
 P.C. R.R. Spk.
 Fd. 8-14-63
 3

P.I. (is in Canal)

P.T. Sta. 57+46.35
 R.R. Spk. set Approximately
 135' West of Nickel Plate R.R.
 Over head Bridge
 Fd. 8-14-63
 4

P.C. Sta. 60+92.90
 R.R. Spk. set Approximately
 195' East of Nickel Plate R.R.
 Over head Bridge
 Fd. 8-14-63
 5

P.T. Sta. 79+39.57
 R.R. Spk. set.
 Fd. 8-14-63
 7