

O.D.O.T. DISTRICT 2 SURVEY OFFICE

PERSONNEL

REFERENCE NO. 6

SHEET 8 OF 68

NOTES Huss

H.C. VAN DUSEN

DATE 5-20-97

ROUTE US-24

R.C. MOSEY

WEATHER PTLY CLOUDY

COUNTY Lucas

TEMP. +61° F

TOWNSHIP Providence

SECTION 5

T 5 N R 9 E

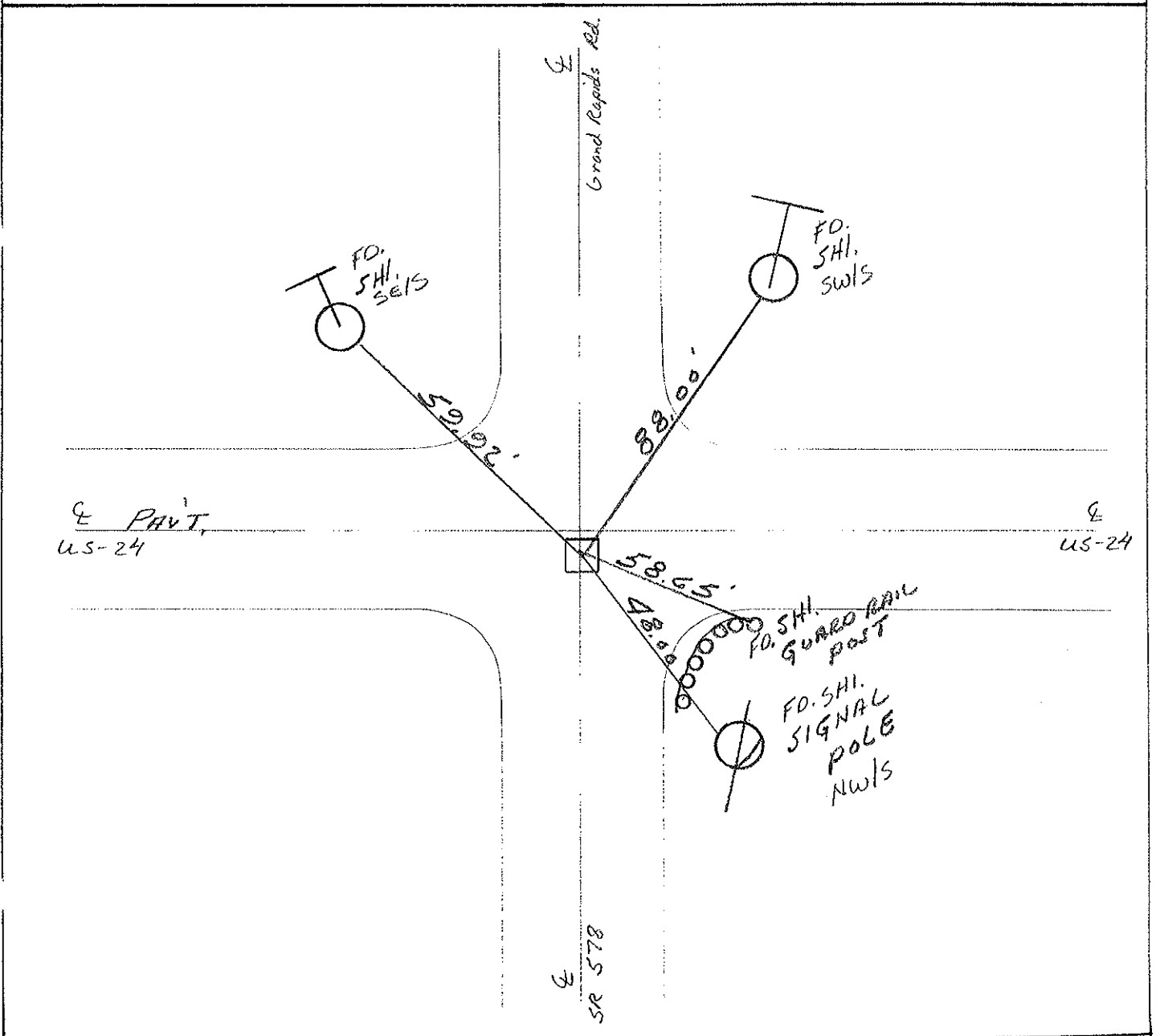
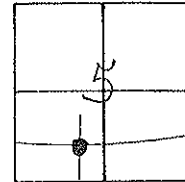
TYPE MONUMENT MON. BOX

ON SURFACE - BELOW YES

LEFT - & PAV'T. - RIGHT 2.1

TO EDGE PAVEMENT

S.L.M. 65+66



O.D.O.T. DISTRICT 2 SURVEY OFFICE

PERSONNEL

REFERENCE NO. 6

SHEET 2 OF

NOTES VAN DUSEN

H.C. K. MOJER

DATE 10-7-94

ROUTE US #24

R.C. R. SLOVAK

WEATHER CLEAR

COUNTY LUCAS

S. HERMILLER P

TEMP. +60° F

TOWNSHIP PROVIDENCE

SECTION 5

T. 5 N R. 9 E

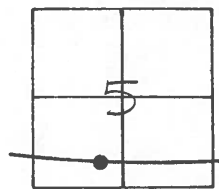
TYPE MONUMENT MOH. BOX

ON SURFACE - BELOW YES

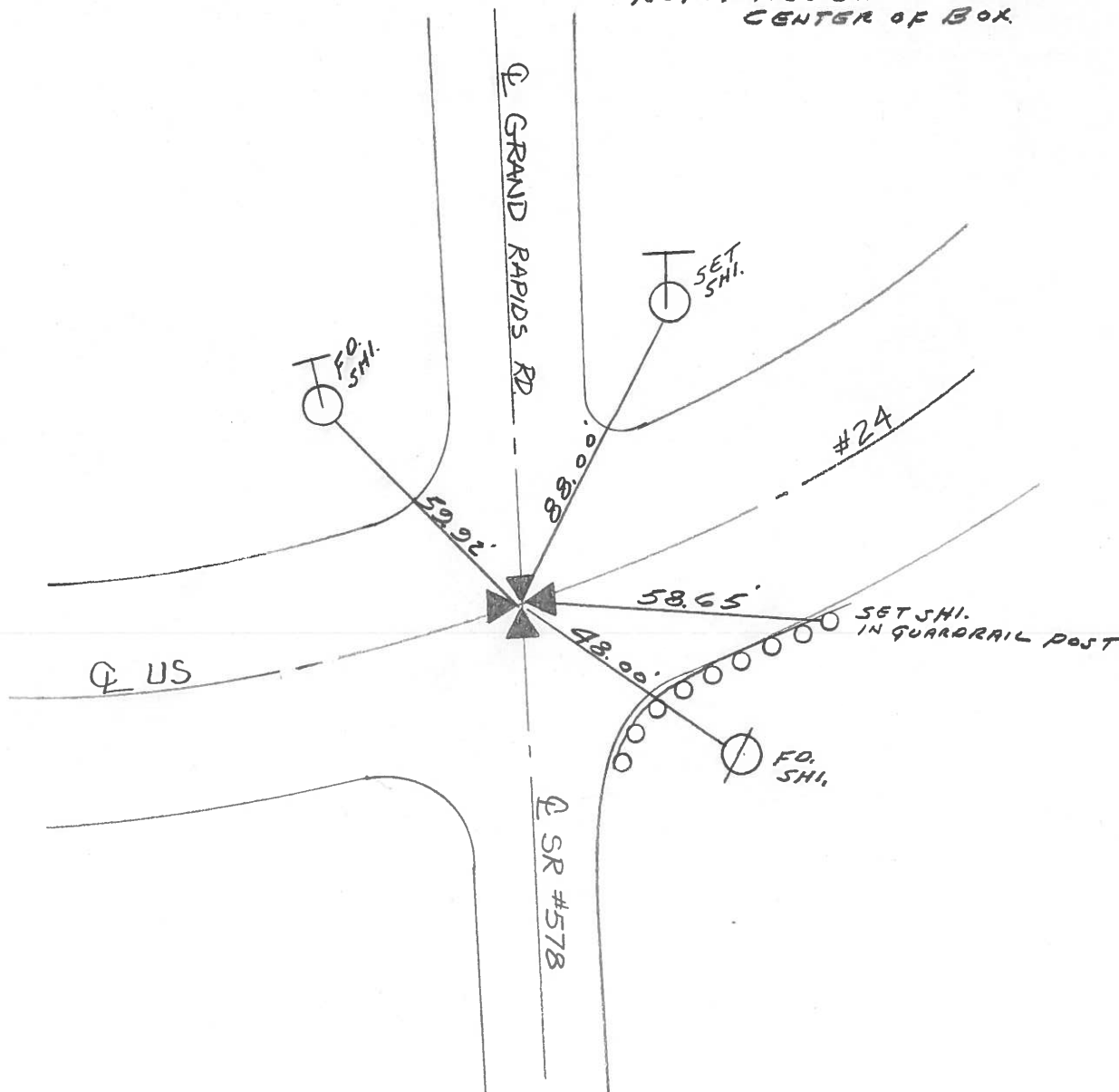
LEFT- 0 PAV'T. - RIGHT 2.1

 TO EDGE PAVEMENT

S.L.M. 65+66



NOTE: TIES SHOWN ARE TO CENTER OF BOX.



O.D.O.T. DISTRICT 2 SURVEY OFFICE

PERSONNEL

REFERENCE NO. 6

SHEET 2 OF

NOTES 1. Stone

H.C. D. Curtis

DATE 24 Aug. 89

ROUTE US #24

R.G. J. Householder

WEATHER Cloudy

COUNTY Lucas

TEMP. 70°

TOWNSHIP Providence

SECTION 5

T R

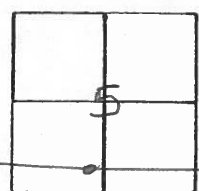
TYPE MONUMENT Mon. Box

ON SURFACE - BELOW Surface

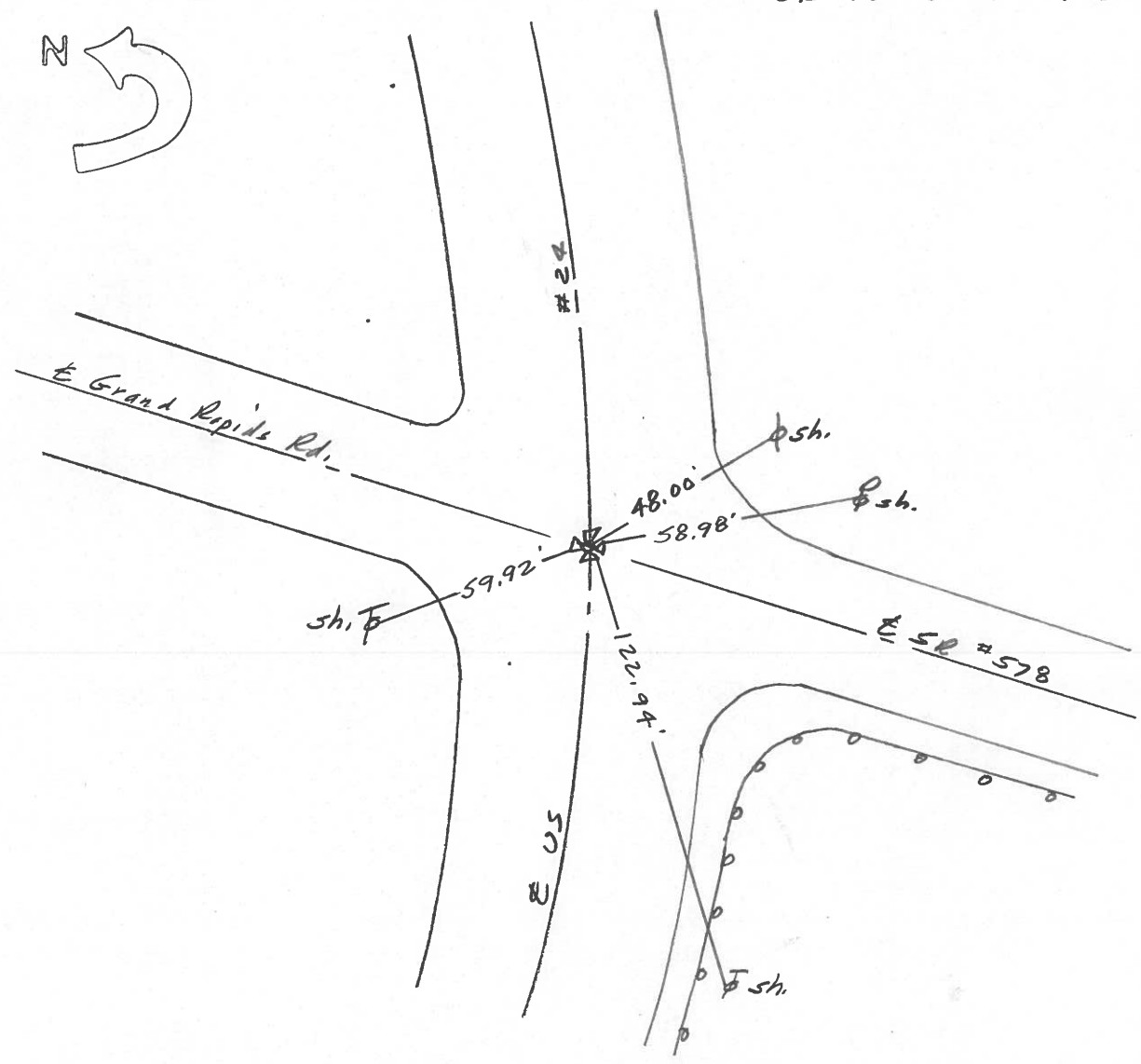
LEFT- & PAV'T. - RIGHT

 TO EDGE PAVEMENT

S.L.M. 65+40



OK 10-13-89 IRS



OD.O.T. DISTRICT 2 SURVEY OFFICE

Sht. 8 of

County Lucas S.R. US #24

Date 23 June 1980

Township Providence

Weather Warm

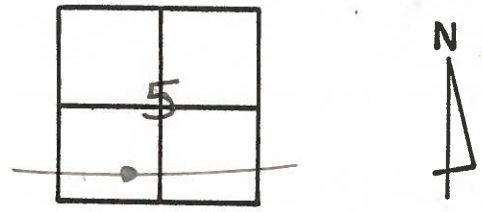
Section 5

Temp. 80°

T N, R E

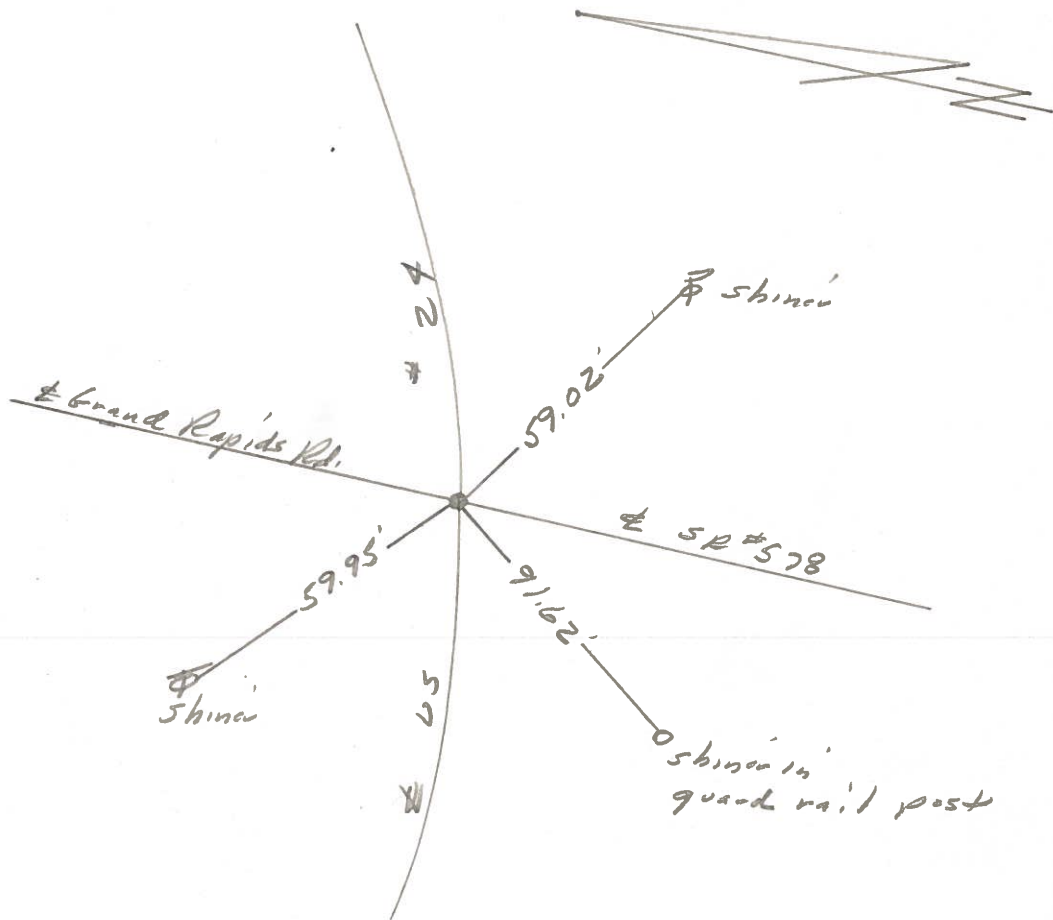
Personnel L. Stone
R. Michalak
P. Neuser
D. Curtis
~~D. ...~~

6



REF. NO. 4206

Fd. Mon. Box To surface



PERSONNEL TITLE PERSONNEL TITLE

W. DENNO

COUNTY LUCAS

DATE JULY 1 1971

D. CURTIS

S. R. US #24

WEATHER CLOUDY

D. STEVENS

SEC.

TEMP. 80 ±

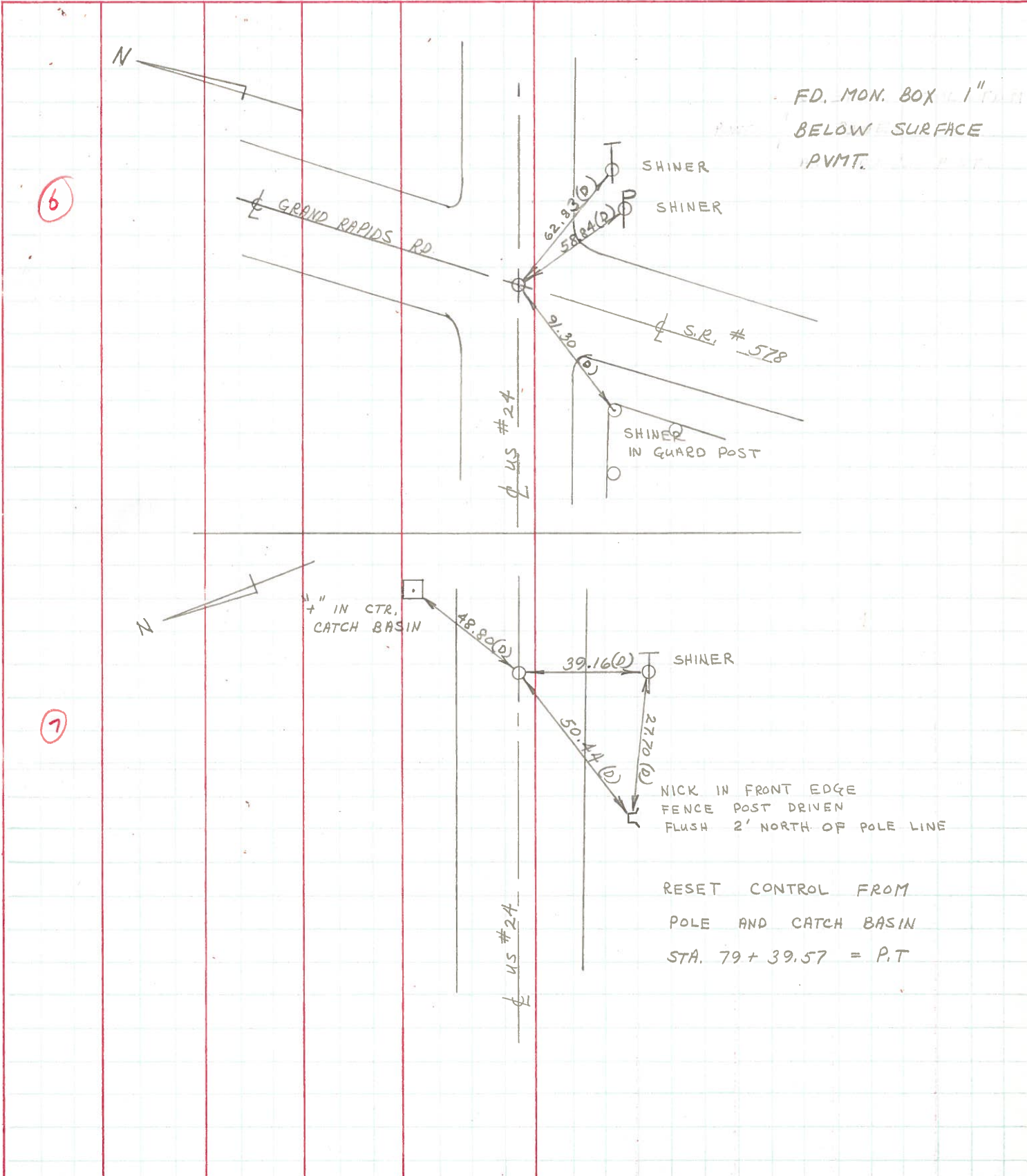
DESCRIPTION

REFERENCES
LEFT

TO CONTROL POINTS
CENTER LINE

RIGHT

JOB NO.



6

7

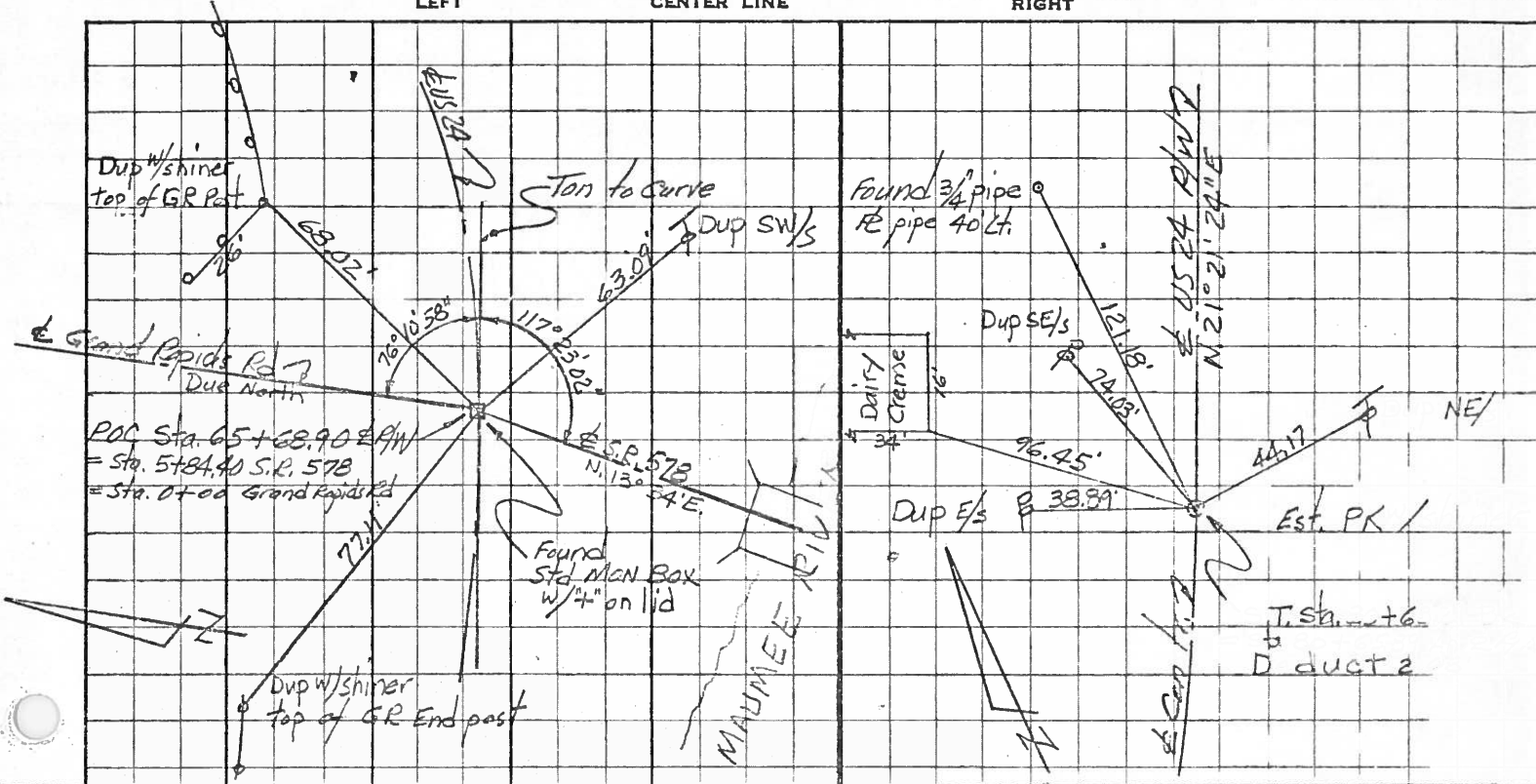
PERSONNEL	TITLE	PERSONNEL	TITLE
Red Beach			
Newcomb			
Knape			
Wise			

COUNTY Lucas DATE 12 Sept 68

S. R. US 24 WEATHER _____

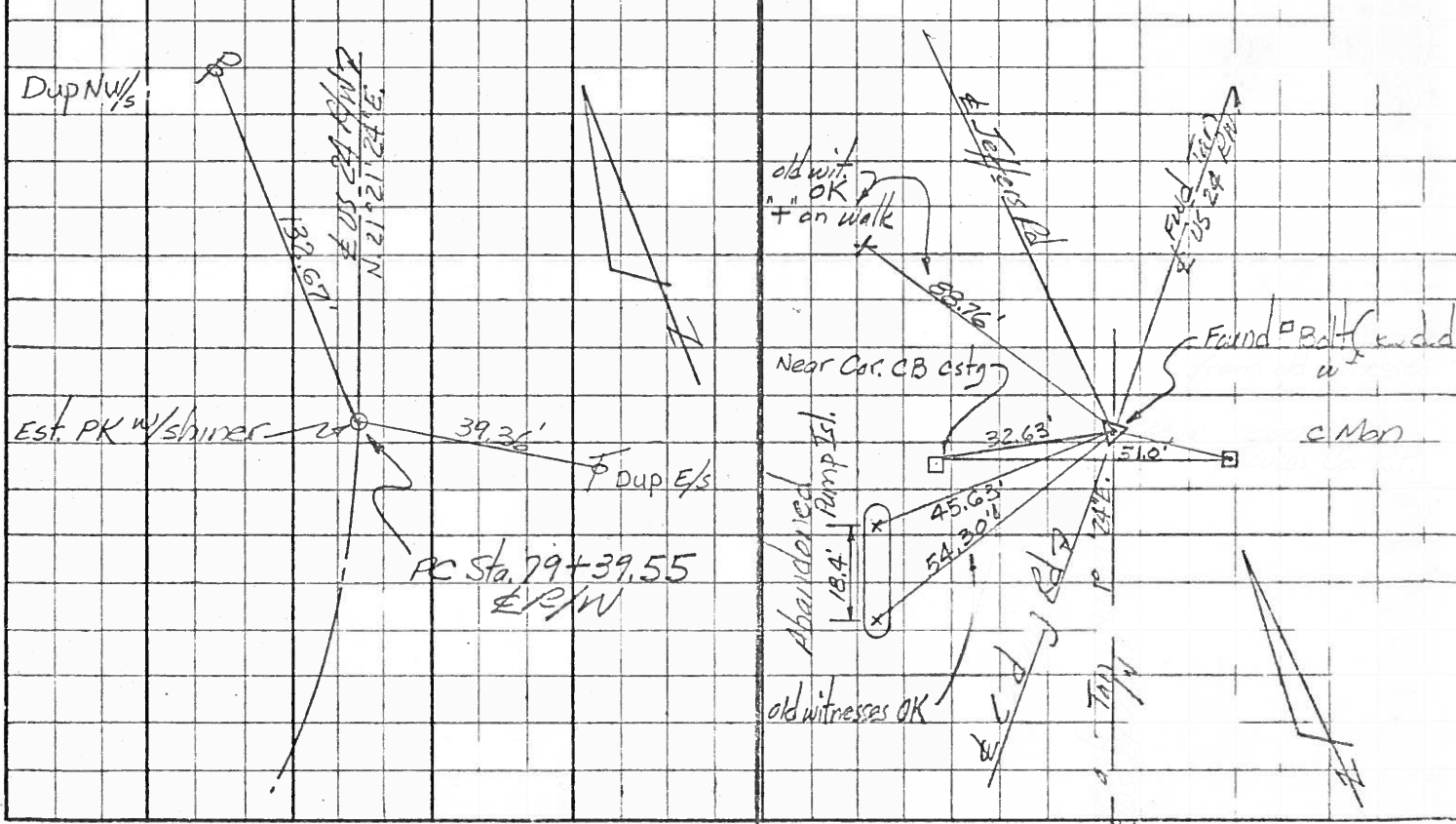
SEC. 1.13 TEMP. _____

DESCRIPTION _____ CONTROL POINTS _____ JOB NO. 02794



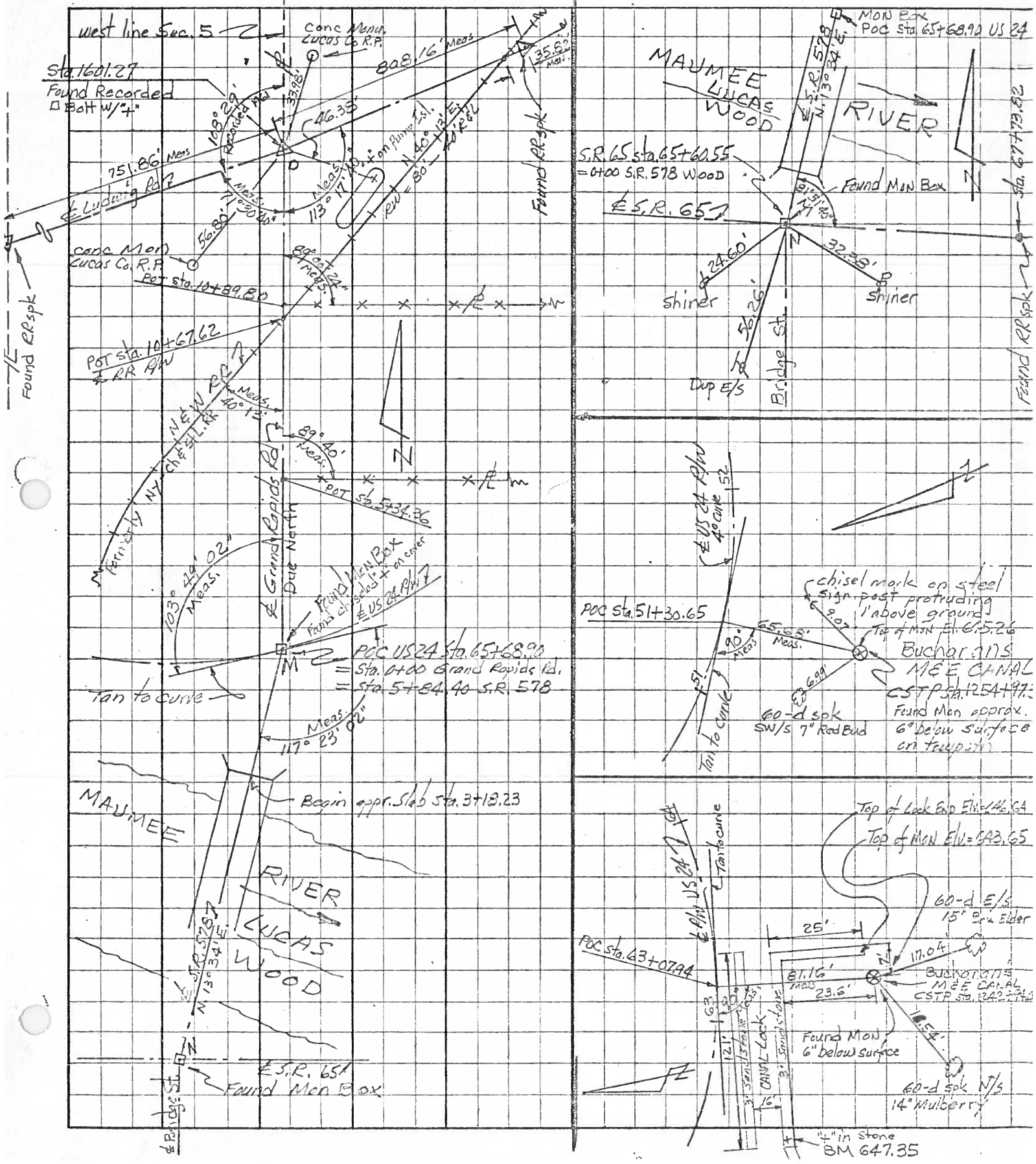
P.C. Sta. 79 + 39.55 & P/W

P.I. Sta 1 +



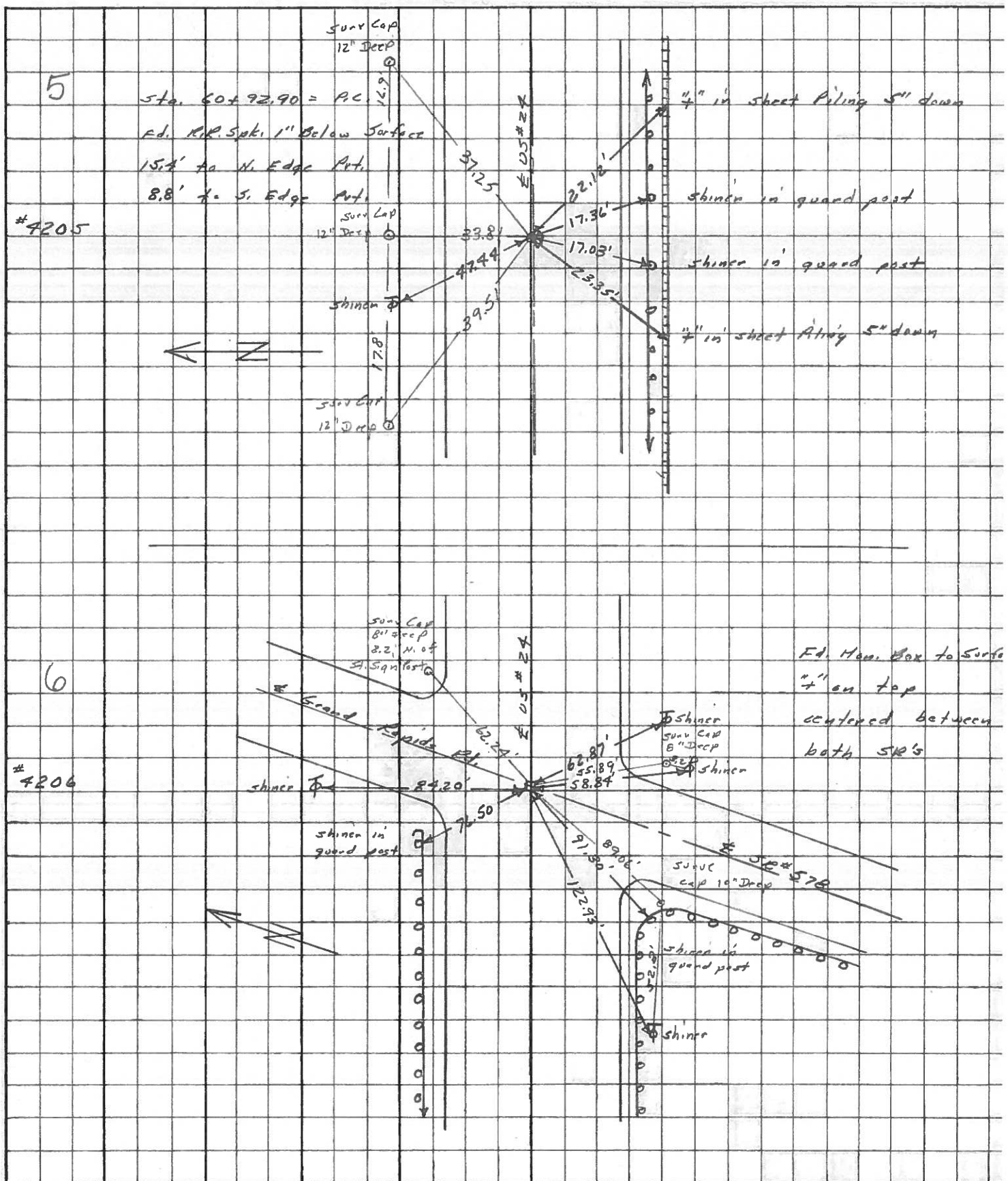
PERSONNEL	TITLE	PERSONNEL	TITLE	COUNTY	DATE	WEATHER
Red Beach				LUCAS	Sept 68	
Newcombs				S. R. US 24		
Knape				SEC. 1.13		
Wise						TEMP.

DESCRIPTION _____ CONTROL POINTS _____ JOB NO. 02794



PERSONNEL	TITLE	PERSONNEL	TITLE	COUNTY	DATE
Stone	Notes			Lucas	May 68
Beck	Flag			S. R. #24	WEATHER Fair
Michalak	Tape			SEC.	TEMP.
Schroder	Tape				

DESCRIPTION References to Control Points JOB NO. _____



PERSONNEL TITLE PERSONNEL TITLE COUNTY Lucas DATE 1 Feb. 66
Stone _____ Beck _____ S. R. #27 WEATHER Cool
Grindley _____ Schroeder _____ SEC. _____ TEMP. 18°

DESCRIPTION Rpts to Contact Points JOB NO. _____
 LEFT CENTER LINE RIGHT

0+00	= Henry - Lucas Co. Line	62.47'	N.N.E. to Shiner in T.P. (D)
1	Ed. R.R. Nail to Surface	76.74'	S.E. to Shiner in 12" Ash (D)
		50.22'	N.W. to Shiner in P.R. (D)
		57.64'	S.W. to Shiner in P.R. (D)
28+97.30	= Proximus Rd.	55.90'	N.W. to Car. Man (D)
2	Ed. R.R. Spk. to Surface	53.15'	S.E. to Car. Man (D)
		44.29'	N.E. to Shiner in T.P. (D)
		60.72'	S. to N.E. Car. Man's Block of Garage (D)
42+76.35	= P.C.	66.93'	N.E. to Shiner in T.P. (D)
3	Set R.R. Nail to Surface	76.96'	S.E. to Shiner in 10" Twin Ash (D)
		85.78'	S.W. to Shiner in 18" Sycamore (D)
57+46.25	= P.T.	52.31'	N.E. to Shiner in T.P. (D)
4	Ed. R.R. Spk. 1/2" Below Surface	26.99'	S.E. to "X" on Street Along 1' Below T.
		25.75'	S.W. to "X" on " " " 1' " "
			(D)
60+92.90	= P.C.	47.84'	N.W. to Shiner in T.P. (D)
5	Ed. R.R. Spk. to Surface	22.12'	S.E. to "X" on Street Along 5' Below
		23.25'	S.W. to "X" on " " " 1' "
			(D)
6	Intersection of S.R. # 24 & S.R. # 578 (Grand Rapids Rd.) Ed. Man Box to Surface	84.20'	N.N.W. to Shiner in T.P. (D)
		62.87'	S.E. to Shiner in T.P. (D)
		122.93'	W.S.W. to Shiner in T.P. (D)
		58.84'	S.S.E. to Shiner in P.P. (D)

PERSONNEL	TITLE	PERSONNEL	TITLE	COUNTY	DATE	WEATHER	TEMP.
Bloy				Lucas	8/15/63	clear	
Pelevses				S. R. US 24			
Buhler							
Ambrose				SEC. MEN - Luc-Waterville			80

DESCRIPTION Ref To Mon. JOB NO. _____

