

O.D.O.T. DISTRICT 2 SURVEY OFFICE

PERSONNEL

REFERENCE NO. 7

SHEET 9 OF 68

NOTES Huss

H.C. VAN DUJEN

DATE 5-20-97

ROUTE US-24

R.C. MOSEK

WEATHER PTLY CLOUDY

COUNTY Lucas

TEMP. +61° F

TOWNSHIP Providence

SECTION 5

T 5 N R 9 E

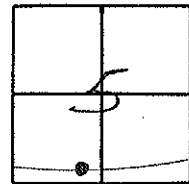
TYPE MONUMENT PK & WASHER

ON SURFACE - ~~BELOW~~ YES

LEFT - & PAV'T. - RIGHT 1.4

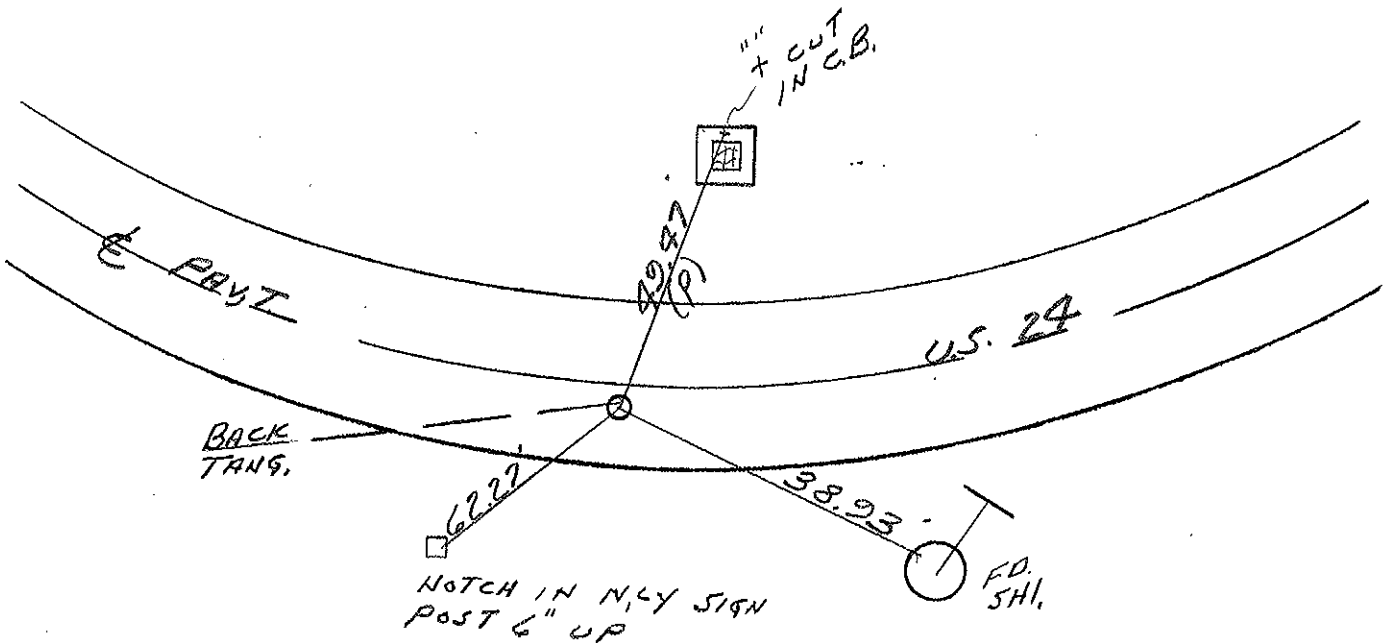
10.5 TO RT. EDGE PAVEMENT

S.L.M. 79+41



(P.T.)

SET PK/WASHER
10-21-97
SAH



O.D.O.T. DISTRICT 2 SURVEY OFFICE

PERSONNEL

REFERENCE NO. 7

SHEET 3 OF

NOTES VAN DUSEN

H.C. K. MOSER

R.C. R. SLOVAK

S. HERMILLER P

DATE 10-7-94

WEATHER CLEAR

TEMP. +60°F

Set P.K./WASHER
5-15-95
C.L.

ROUTE US #24

COUNTY LUCAS

TOWNSHIP Providence

SECTION 5

T. S N. R 9 E

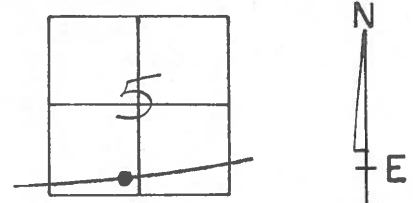
TYPE MONUMENT SM. RR. SPK.

ON SURFACE - BELOW 2" BELOW

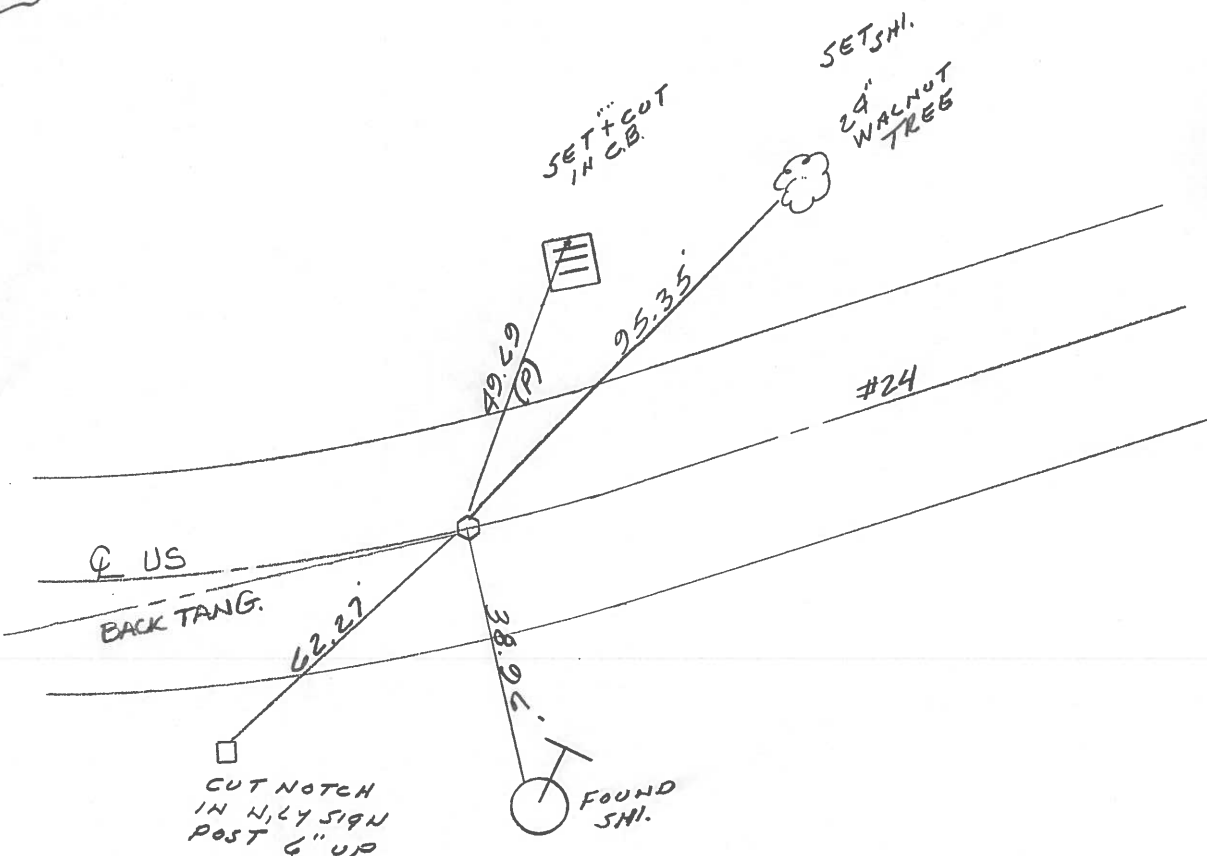
~~LEFT~~ - & PAV'T. - RIGHT 1.4'

10.8 TO RT. EDGE PAVEMENT

S.L.M. 79+28



P.T.



O.D.O.T. DISTRICT 2 SURVEY OFFICE

PERSONNEL _____

REFERENCE NO. 7

SHEET 3 OF _____

NOTES 1. Stone

H.C. D. Curtis

DATE 24 Aug. 89

ROUTE US# 24

R.G. J. Householder

WEATHER Cloudy

COUNTY Lucas

TEMP. 70°

TOWNSHIP Providence

SECTION 5

T. R.

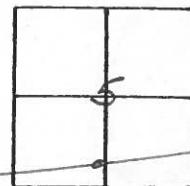
TYPE MONUMENT PK Nail

ON SURFACE - BELOW Surface

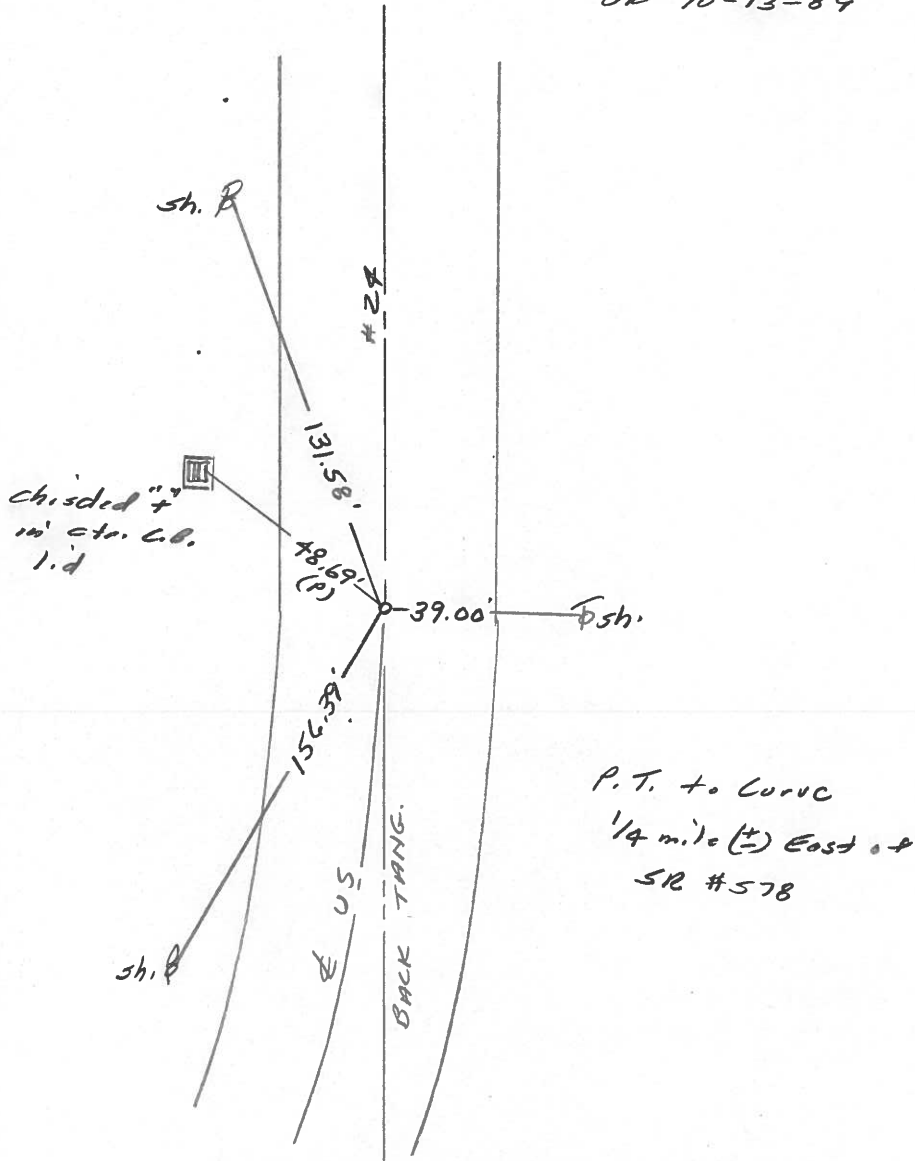
LEFT- & PAV'T. - RIGHT _____

TO _____ EDGE PAVEMENT

S.L.M. 79+10



OK 10-13-89



County Lucas S.R. US #24

Date 24 June 1980

Township Providence

Weather Cloudy

Section 5

Temp. 70°

T.N, R.E

Personnel L. Stone

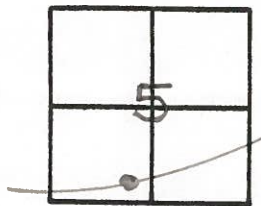
R. Michalak

P. Neuser

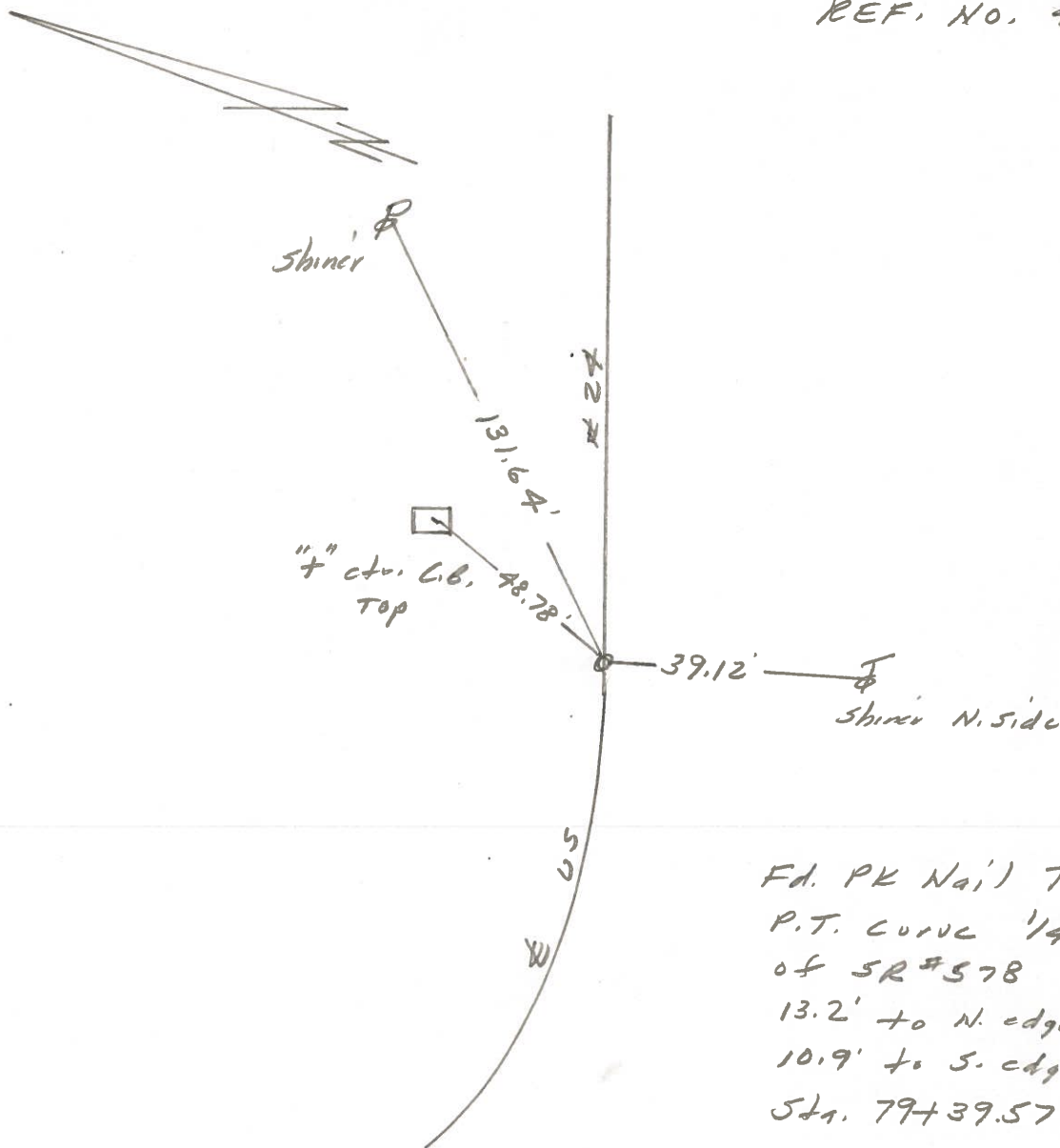
D. Curtis

~~D. Gammack~~

7



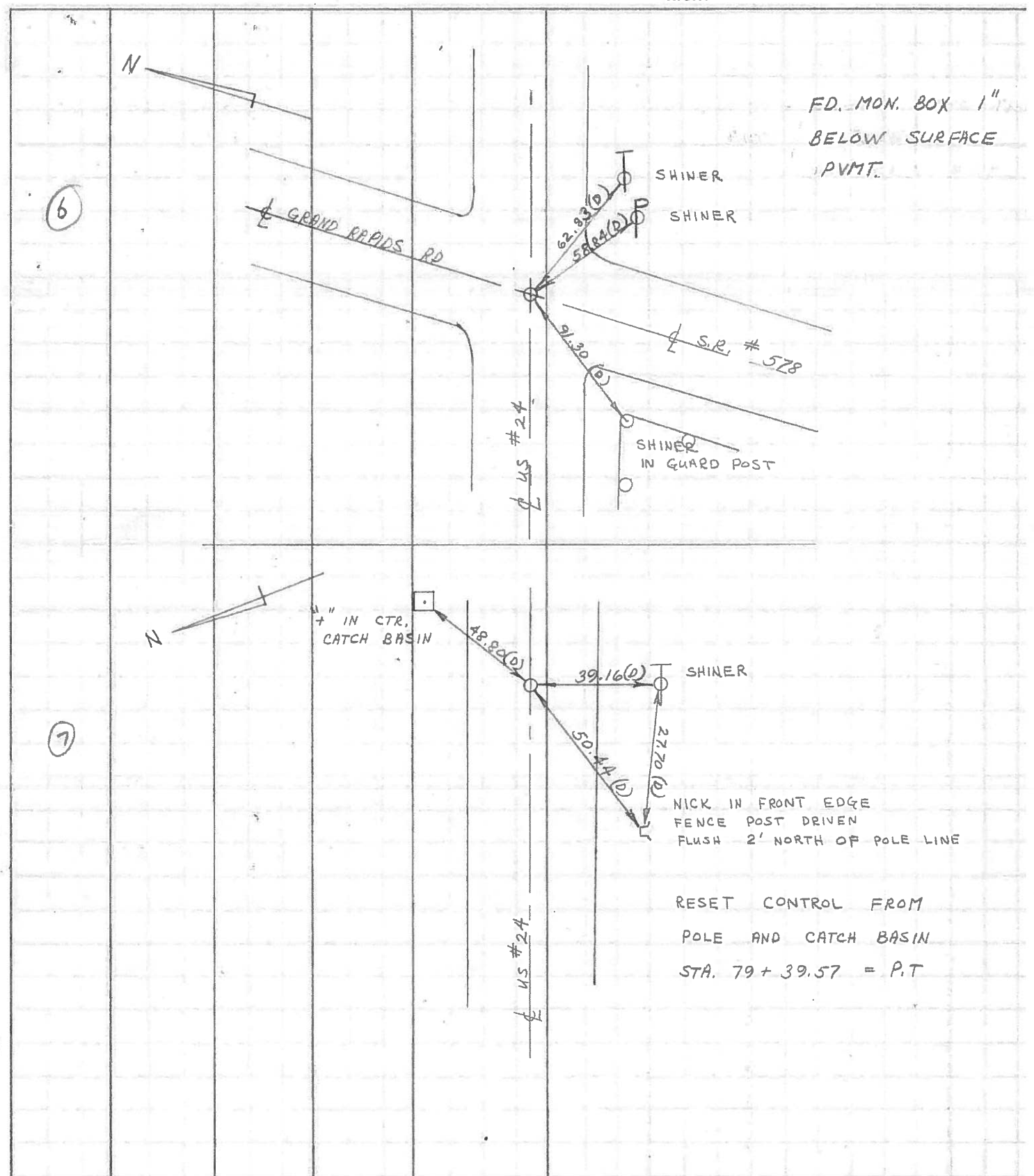
REF. NO. 4207



Fd. PK Nail To Surface
P.T. Curve 1/4 mile East
of SR #578
13.2' to N. edge put.
10.9' to S. edge put.
Sta. 79+39.57 = P.T.

PERSONNEL	TITLE	PERSONNEL	TITLE	COUNTY	DATE
W. DENNO				LUCAS	JULY 1 1971
D. CURTIS				S. R. <u>US #24</u>	WEATHER <u>CLOUDY</u>
D. STEVENS				SEC.	TEMP. <u>80 ±</u>

DESCRIPTION	REFERENCES LEFT	TO CONTROL CENTER LINE	POINTS RIGHT	JOB NO.
-------------	-----------------	------------------------	--------------	---------



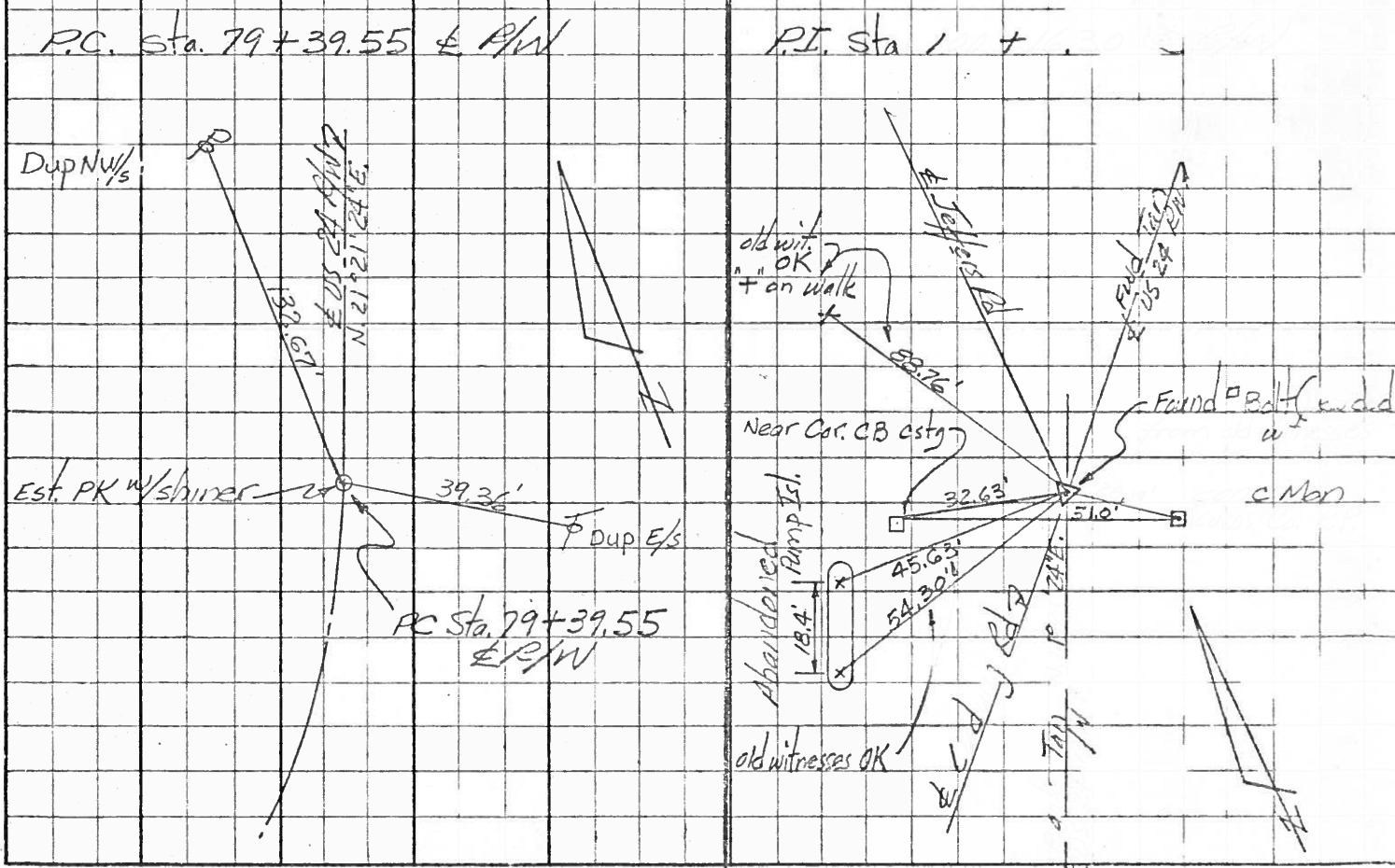
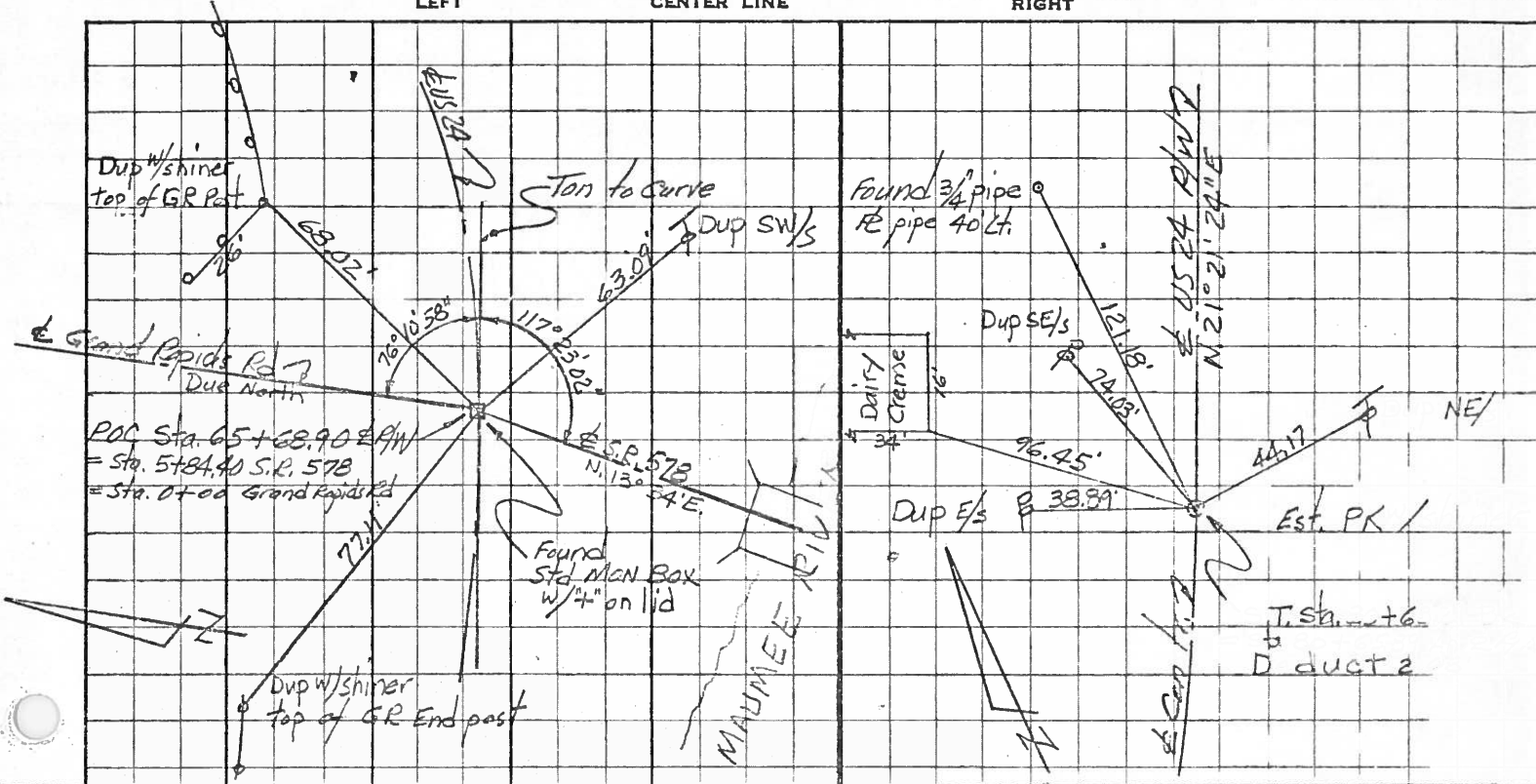
PERSONNEL	TITLE	PERSONNEL	TITLE
Red Beach			
Newcomb			
Knape			
Wise			

COUNTY Lucas DATE 12 Sept 68

S. R. US 24 WEATHER _____

SEC. 1.13 TEMP. _____

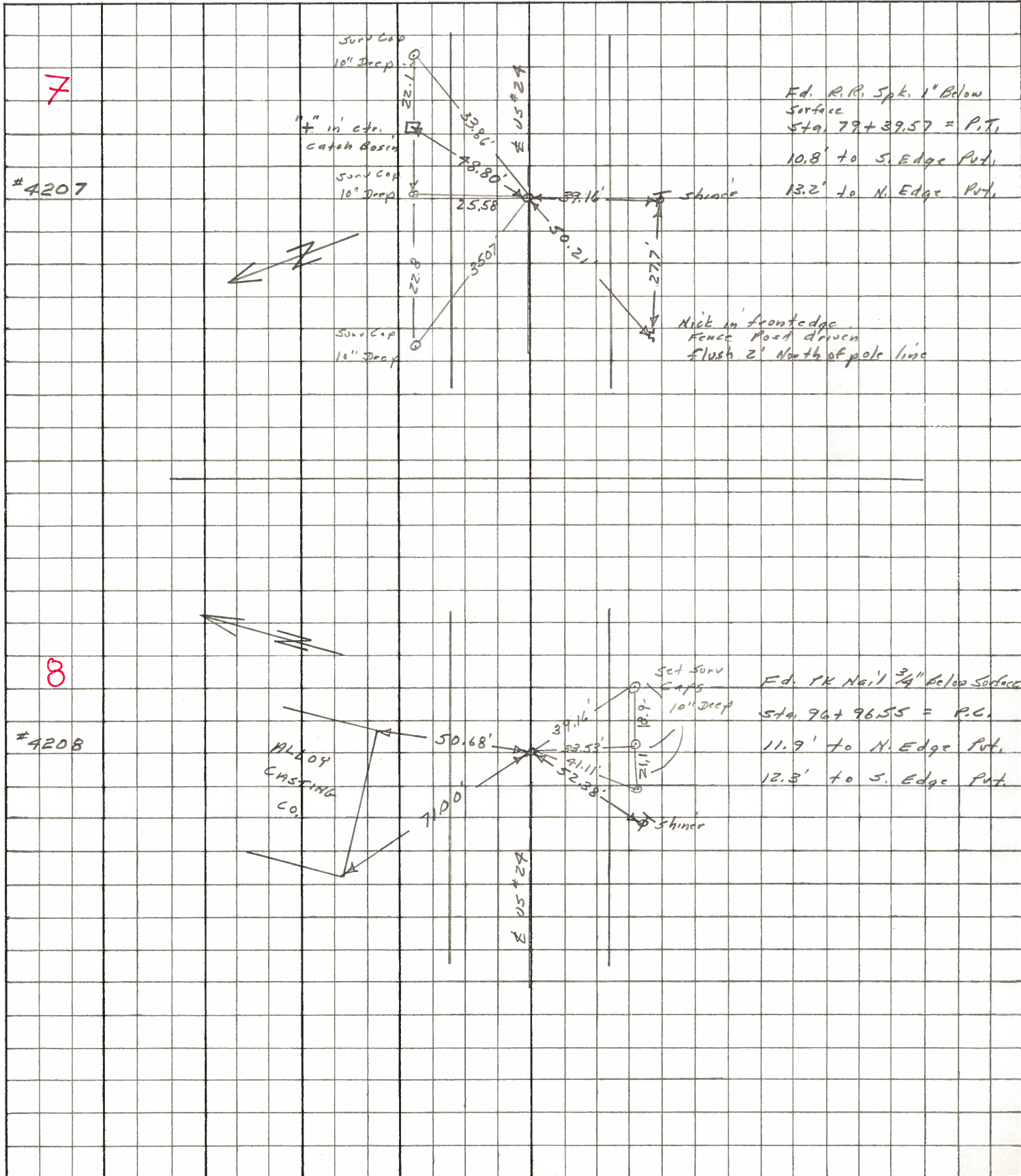
DESCRIPTION _____ CONTROL POINTS _____ JOB NO. 02794



PERSONNEL	TITLE	PERSONNEL	TITLE	COUNTY	DATE
Stone	Notes			Locas	May 68
Beck	Flag			S. R. #24	WEATHER Fair
Michalak	Tape			SEC.	TEMP.
Schroder	Tape				

DESCRIPTION References to Control Points JOB NO. _____

LEFT CENTER LINE RIGHT



PERSONNEL	TITLE	PERSONNEL	TITLE	COUNTY	DATE
Stone				Lucas	2 Feb. 66
Beck				S. R. #24	WEATHER Cool
Schroter				SEC.	TEMP. 39°

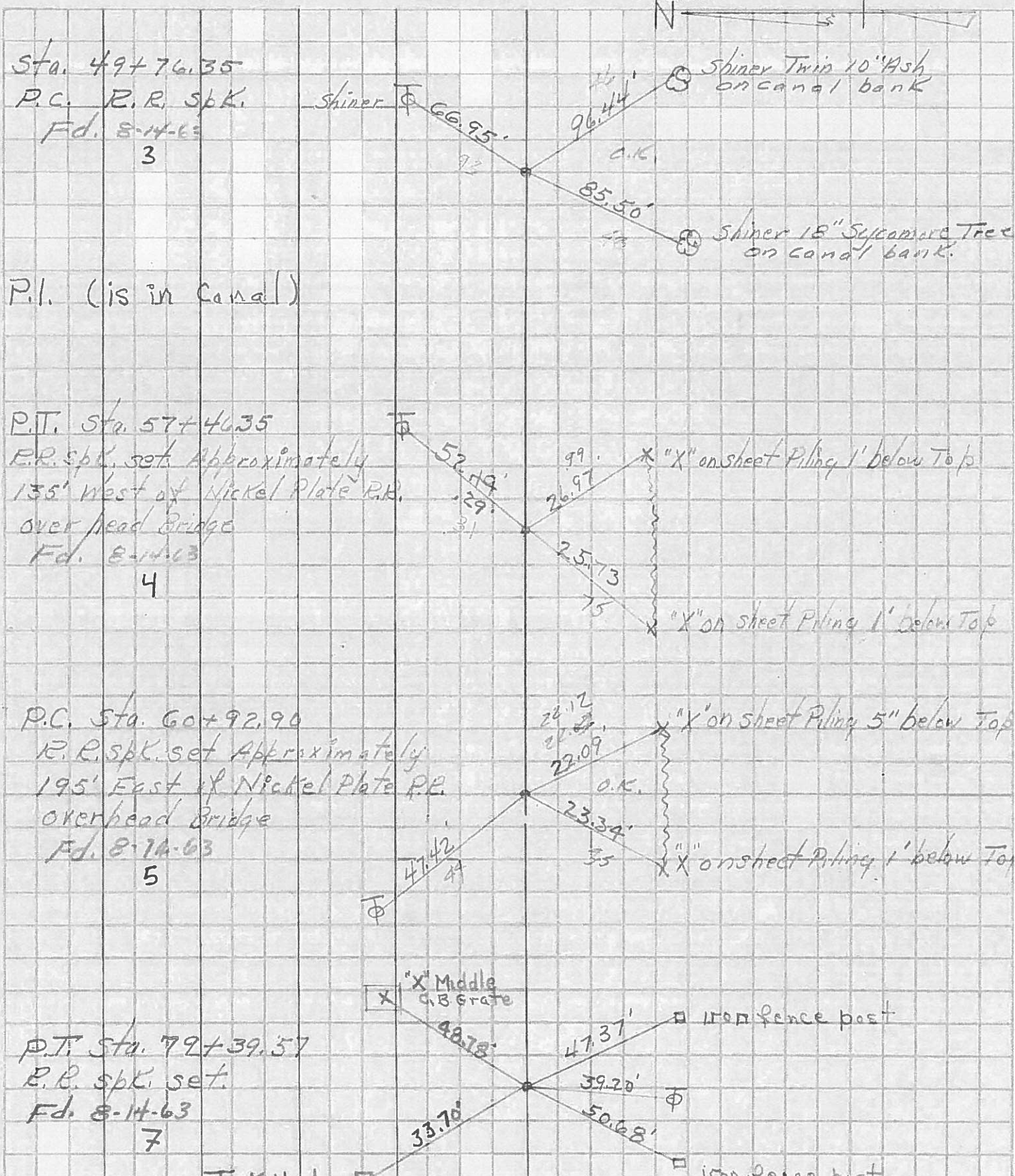
DESCRIPTION Refs. to Control Pts. JOB NO. _____

	LEFT	CENTER LINE	RIGHT
79+37.57 = P.T.		48.80'	N.E. To "X" Middle of C.B. (P)
7	Ed. P.P. Spk.	39.23'	S. To Shiner in T.P. (D)
	1/2" Below Surface	50.67'	S.W. To Iron Fence Post (P)
96+96.55 = P.C.		50.68'	N.N.E. To Cor. Bldg (D)
8	Set PK No. 1	71.00'	N.W. To S.W. Cor. Bldg (D)
	3/4" Below Surface	52.38'	S.W. To Shiner in T.P. (D)
100+16.30 = Δ		38.76'	N.E. To "t" on New Cor. Walkway (D)
9	Jeffers & Ludwig Rds.	45.63'	N. To "t" on E. Edge Pump Island (D)
	Ed. P.P. Spk. to Surface	54.30'	N.W. To "t" on W. " " " (D)
113+81.70 = P.C.		38.07'	S.E. To Shiner in T.P. (D)
10	Set PK No. 1	46.35'	S.E. To Shiner in T.P. (D)
	To Surface	82.66'	N.W. To Shiner in T.P. (D)
114+98.51 = Δ		103.46'	S.W. To Shiner in T.P. (D)
11	Ed. P.P. Spk.	74.84'	S.E. To Shiner in T.P. (D)
	to Surface	51.91'	N.W. To Shiner in T.P. (D)
116+15.03 = P.T.		40.99'	N.W. To Shiner in T.P. (D)
12	Set PK 1/2"	70.23'	S.W. To Shiner in T.P. (D)
	Below Surface	107.57'	S.E. To Shiner in T.P. (D)
127+49.53 = Δ		64.19'	S. To Steel Fence Post (D)
13	Ed. 1/2" I. P.P.	80.09'	S.W. To Shiner in T.P. (D)
	at Surface	36.08'	N. To Shiner in T.P. (D)
		34.21'	N.W. To Shiner in End Guard Post (D)

PERSONNEL	TITLE	PERSONNEL	TITLE
Silvester			
+			
crew			

COUNTY LUCAS DATE 1958
 S. R. #24 WEATHER
 SEC. He. Luc. - Waterville TEMP

DESCRIPTION _____ (0.00) _____ JOB NO. _____



Sta. 49+76.35
 P.C. R.R. Spk.
 Fd. 8-14-63
 3

P.I. (is in Canal)

P.T. Sta. 57+46.35
 R.R. Spk. set Approximately
 135' West of Nickel Plate R.R.
 over lead Bridge
 Fd. 8-14-63
 4

P.C. Sta. 60+92.90
 R.R. Spk. set Approximately
 195' East of Nickel Plate R.R.
 overhead Bridge
 Fd. 8-14-63
 5

P.T. Sta. 79+39.57
 R.R. Spk. set.
 Fd. 8-14-63
 7



Shiner ϕ

Shiner Twin 10' Ash on canal bank

Shiner 18" Sycamore Tree on canal bank.

ϕ

"X" on sheet Piling 1' below Top

"X" on sheet Piling 1' below Top

"X" on sheet Piling 5" below Top

"X" on sheet Piling 1' below Top

"X" Middle 1/3 Grate

Iron fence post

Iron fence post