

O.D.O.T. DISTRICT 2 SURVEY OFFICE

PERSONNEL

NOTES LOEHRKE
 H.C. MOSER
 R.C. SLONAK

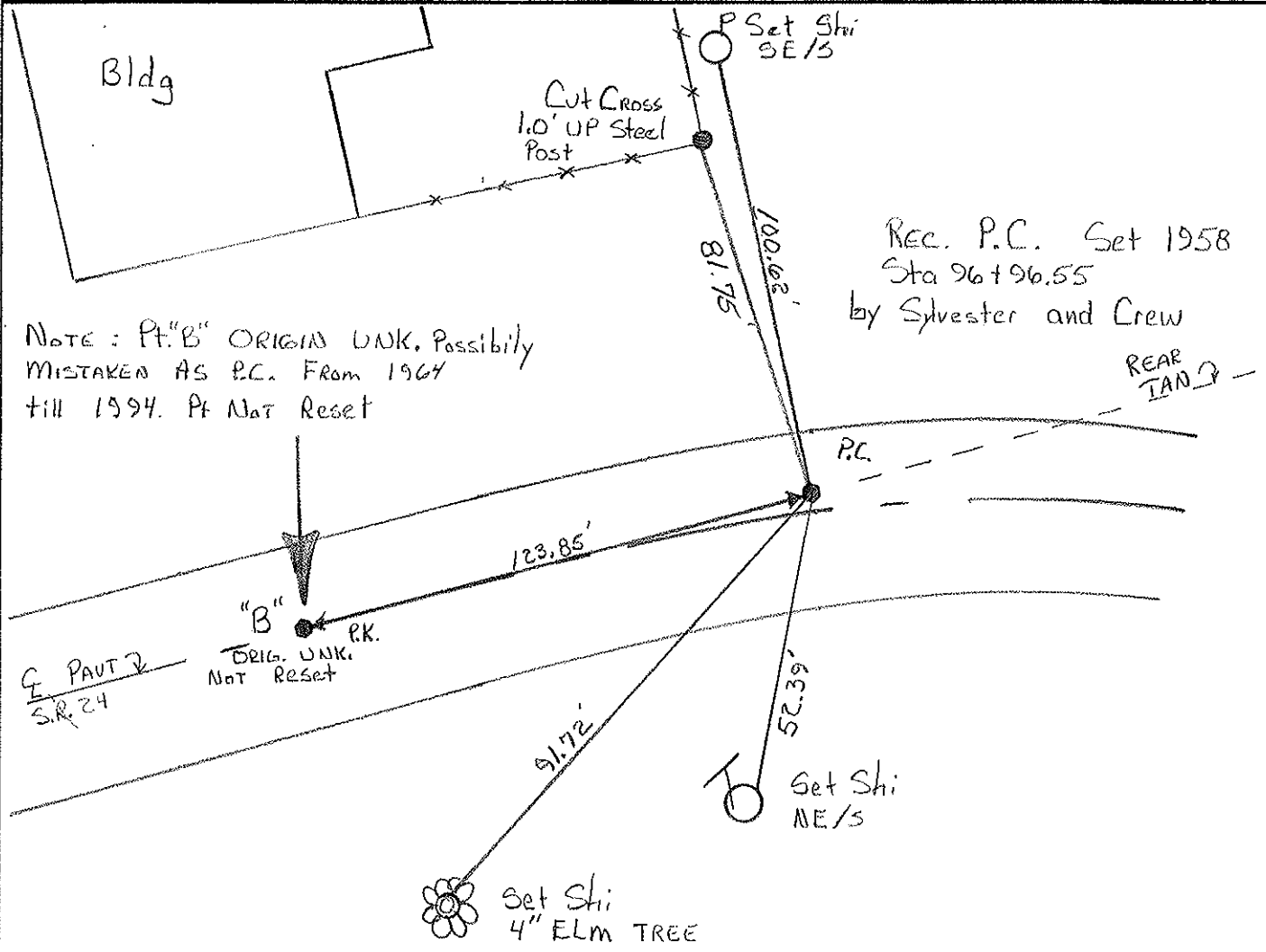
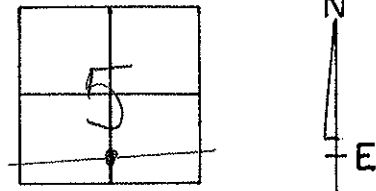
REFERENCE NO. 8
 DATE 10-7-94
 WEATHER Sunny
 TEMP. 60

SHEET 10 OF 68

ROUTE U.S. 24
 COUNTY LUCAS
 TOWNSHIP PROVIDENCE
 SECTION 5
 T. S. N. R. 9. E.

Set P.K./WASHER
 5-15-95
 CL

TYPE MONUMENT Lg R.R. Spike
 ON SURFACE - BELOW 4"
 LEFT - E PAV'T. - RIGHT 2.0' Lt
10.4 TO Lt EDGE PAVEMENT
 S.L.M. 96+79



O.D.O.T. DISTRICT 2 SURVEY OFFICE

PERSONNEL _____

REFERENCE NO. 8

SHEET 4 OF _____

NOTES 1. Stone

H.C. D. Curtis

DATE 24 Aug. 89

ROUTE US#24

R.C. J. Hausholder

WEATHER Cloudy

COUNTY Lucas

TEMP. 70°

TOWNSHIP Providence

SECTION 5

T _____ R _____

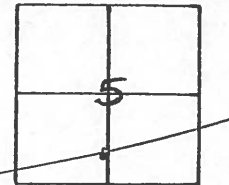
TYPE MONUMENT PK Nail

ON SURFACE - BELOW Surface

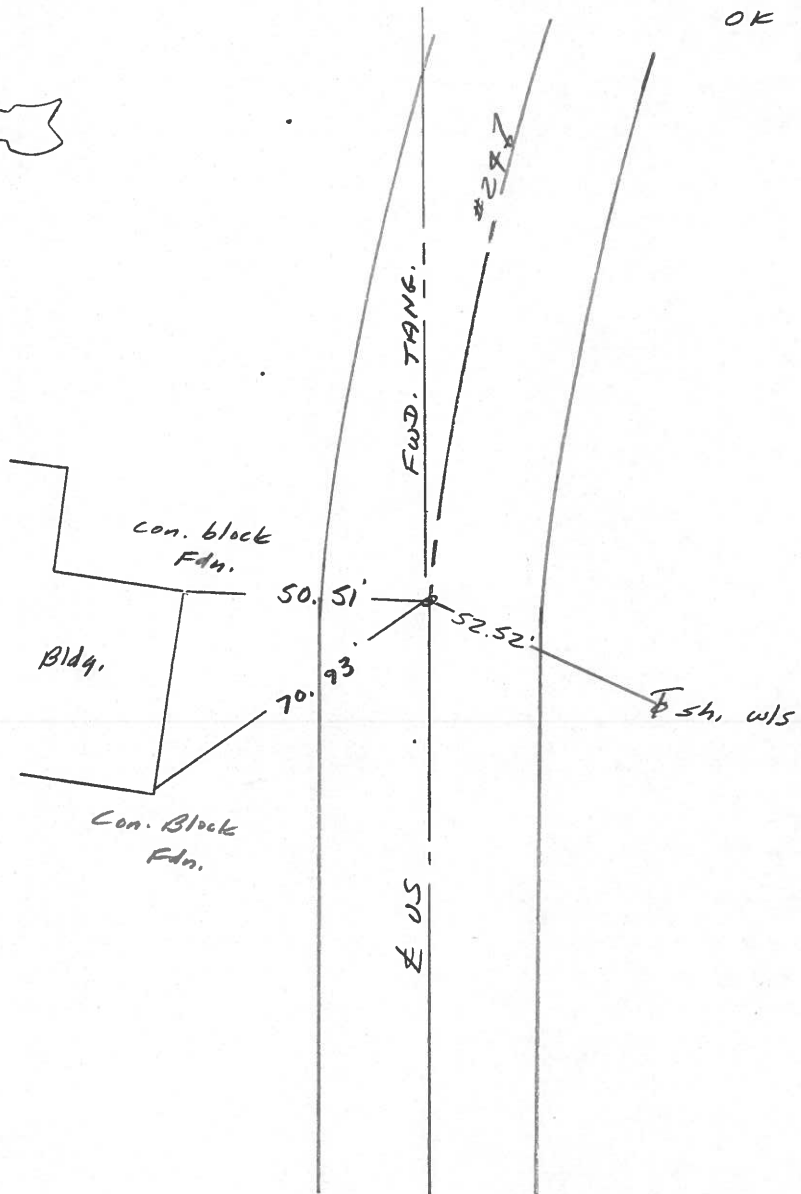
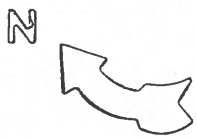
LEFT- & PAV'T. - RIGHT _____

TO _____ EDGE PAVEMENT

S.L.M. 95+42



OK 10-13-89 IRS



OD.OT. DISTRICT 2 SURVEY OFFICE

Sht. 10 of

County Lucas S.R. US#24

Township Providence

Section 5

T N, R E

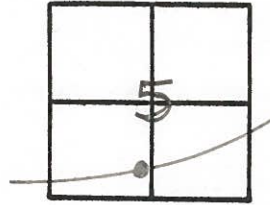
Personnel L. Stone
R. Michalak
P. Neuser
D. Curtis
D. ~~Granata~~

8

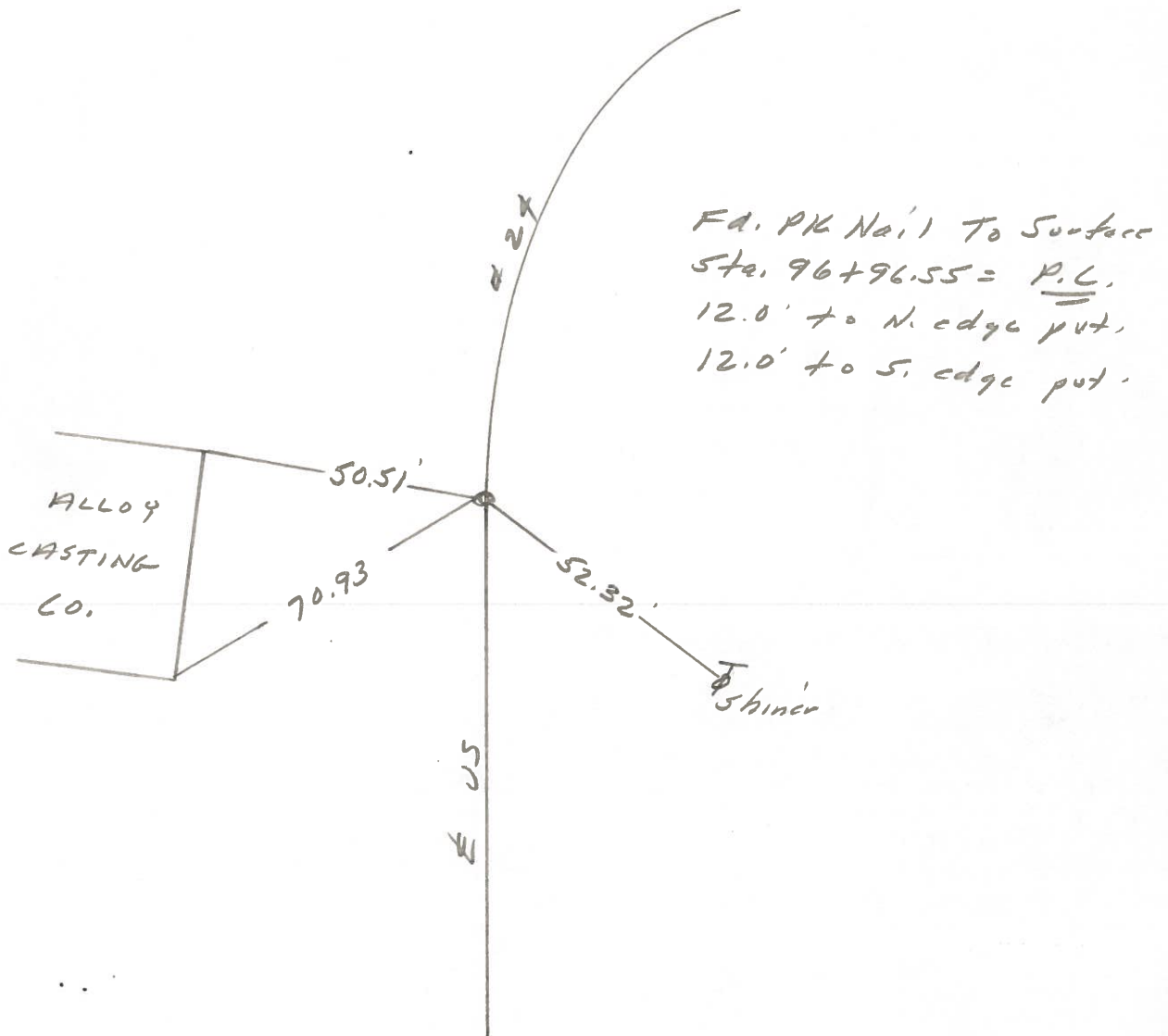
Date 24 June 1980

Weather Cloudy

Temp. 70°



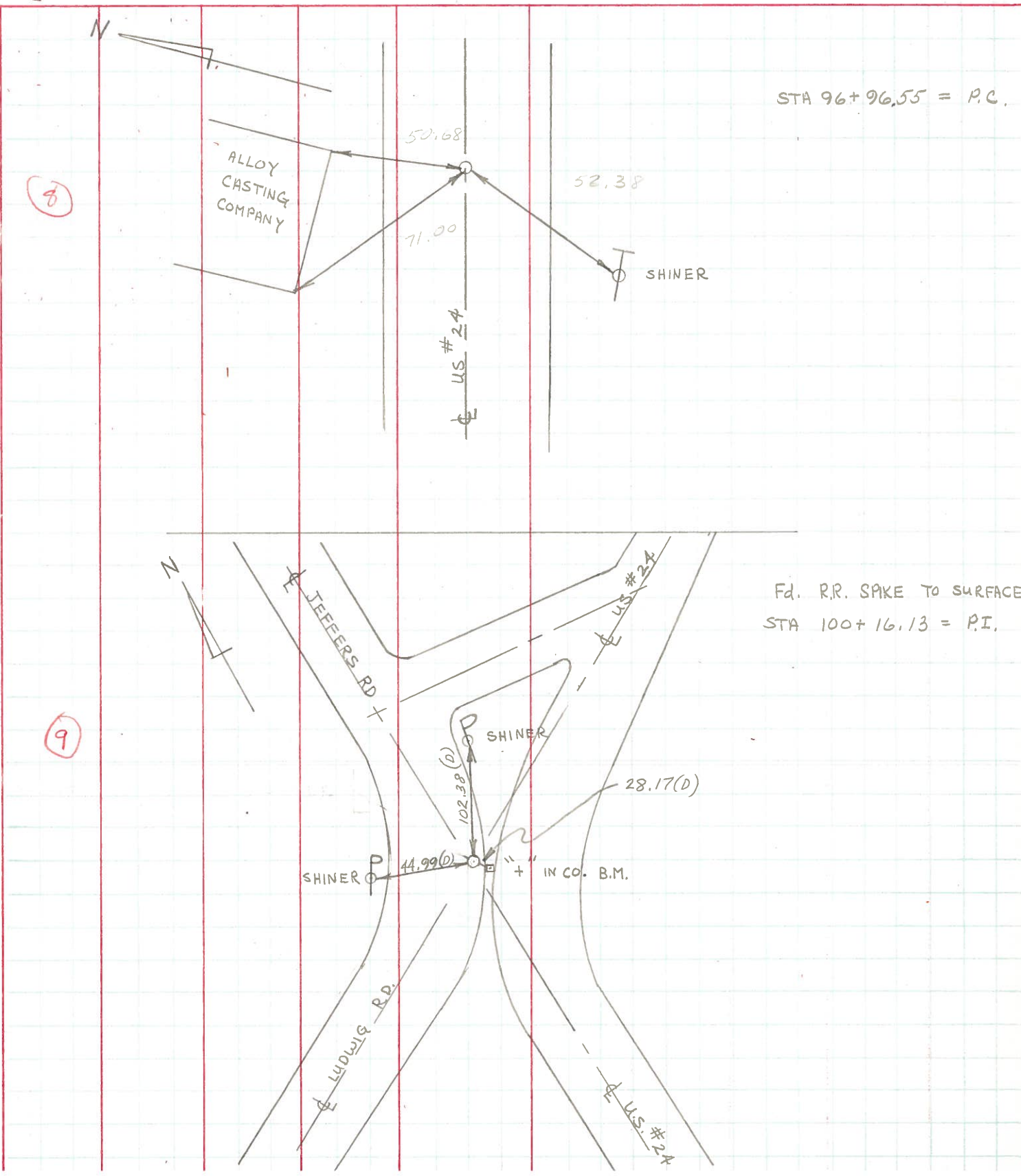
REF. NO. 4208



PERSONNEL	TITLE	PERSONNEL	TITLE
W. DENNO			
D. CURTIS			
D. STEVENS			

COUNTY LUCAS DATE JULY 1 1971
 S. R. US. #24 WEATHER CLOUDY
 SEC. _____ TEMP. 80±

DESCRIPTION _____ REFERENCE TO CONTROL POINTS _____ JOB NO. _____
 LEFT CENTER LINE RIGHT



STA 96+96.55 = P.C.

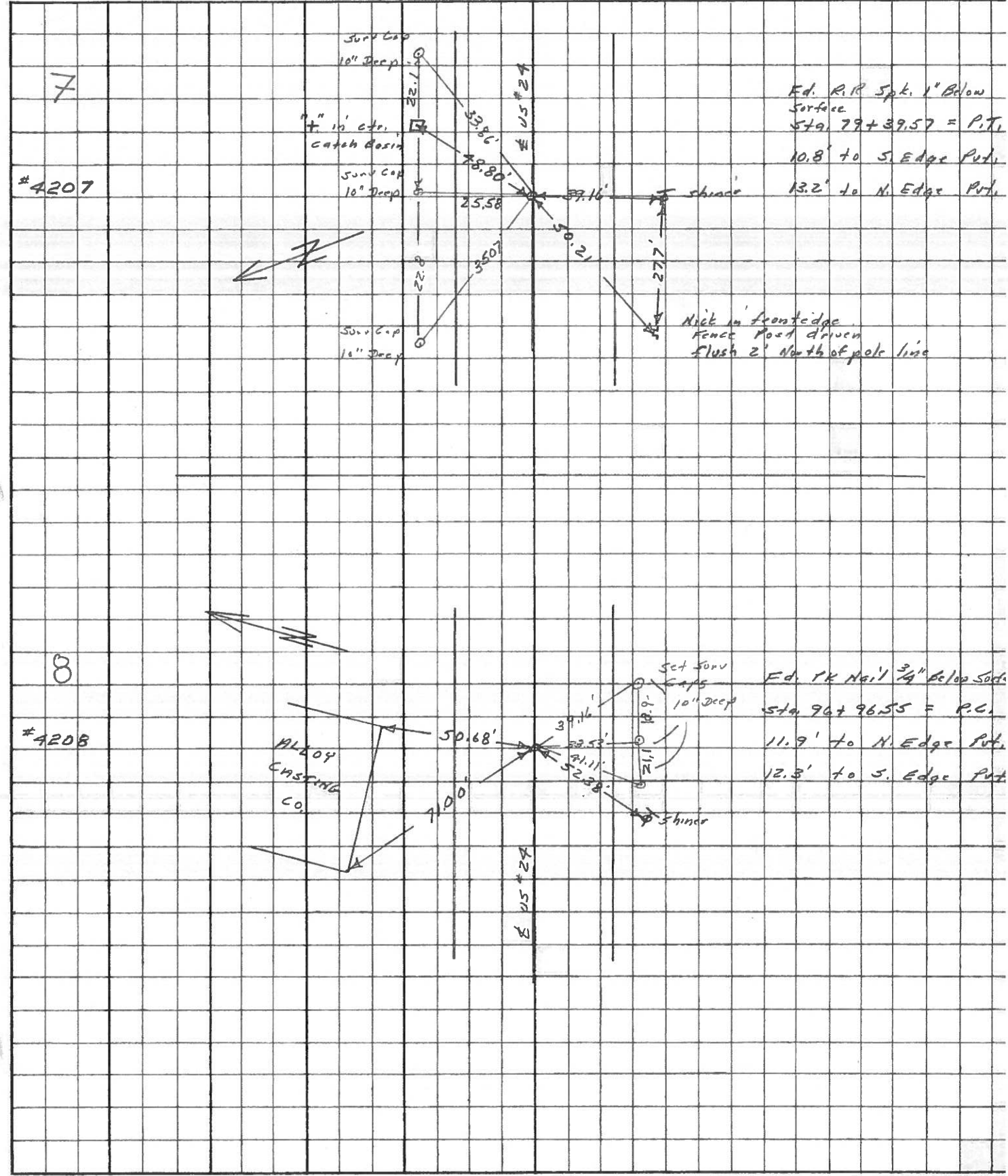
Fd. R.R. SPIKE TO SURFACE
STA 100+16.13 = P.I.

8

9

PERSONNEL	TITLE	PERSONNEL	TITLE	COUNTY	DATE
Stone	Notes			Locas	May 68
Beck	Flag			S. R. #24	WEATHER Fair
Michalak	Tape			SEC.	TEMP.
Schroder	Tape				

DESCRIPTION References to Control Points JOB NO.



PERSONNEL	TITLE	PERSONNEL	TITLE	COUNTY	Lucas	DATE	2 Feb. 66
Stone				S. R.	#29	WEATHER	Cool
Beck				SEC.		TEMP.	29°
Schuster							

DESCRIPTION Refs. to Control Pts. JOB NO. _____

	LEFT	CENTER LINE	RIGHT
79+37.57 = P.T.		48.80'	N.E. To "X" Middle of C.B. (P)
Ed. R.R. Spk.		37.23'	S. To Shiner in T.P. (D)
7 1/2" Below Surface		50.67'	S.W. To Iron Fence Post (P)
96+96.55 = P.C.		50.68'	N.N.E. To Cor. Bldg (D)
Set PK No. 1		71.00'	N.W. To S.W. Cor Bldg (D)
8 3/4" Below Surface		52.38'	S.W. To Shiner in T.P. (D)
100+16.30 = Δ		38.76'	N.E. To "t" on N.W. Cor. Walkway (E)
Jeffers & Ludwig Rts.		45.63'	N. To "t" on E. Edge Pump Island (D)
9 Ed. R.R. Spk. to Surface		54.30'	N.W. To "t" on W. " " " (D)
113+81.70 = P.C.		88.07'	S.E. To Shiner in T.P. (D)
Set PK No. 1		46.35'	S.E. To Shiner in T.P. (D)
10 To Surface		82.66'	N.W. To Shiner in T.P. (D)
114+78.51 = Δ		103.46'	S.W. To Shiner in T.P. (D)
Ed. R.R. Spk.		74.87'	S.E. To Shiner in T.P. (D)
11 to Surface		51.91'	N.W. To Shiner in T.P. (D)
116+15.03 = P.T.		40.99'	N.W. To Shiner in T.P. (D)
Set PK 1/2"		70.23'	S.W. To Shiner in T.P. (D)
12 Below Surface		107.57'	S.E. To Shiner in T.P. (D)
127+49.53 = Δ		69.19'	S. To Steel Fence Post (D)
Ed. 1/2" I. Pipe		80.09'	S.W. To Shiner in T.P. (D)
13 at Surface		36.08'	N. To Shiner in T.P. (D)
		34.21'	N.W. To Shiner in End Guard Post (D)

PERSONNEL TITLE PERSONNEL TITLE

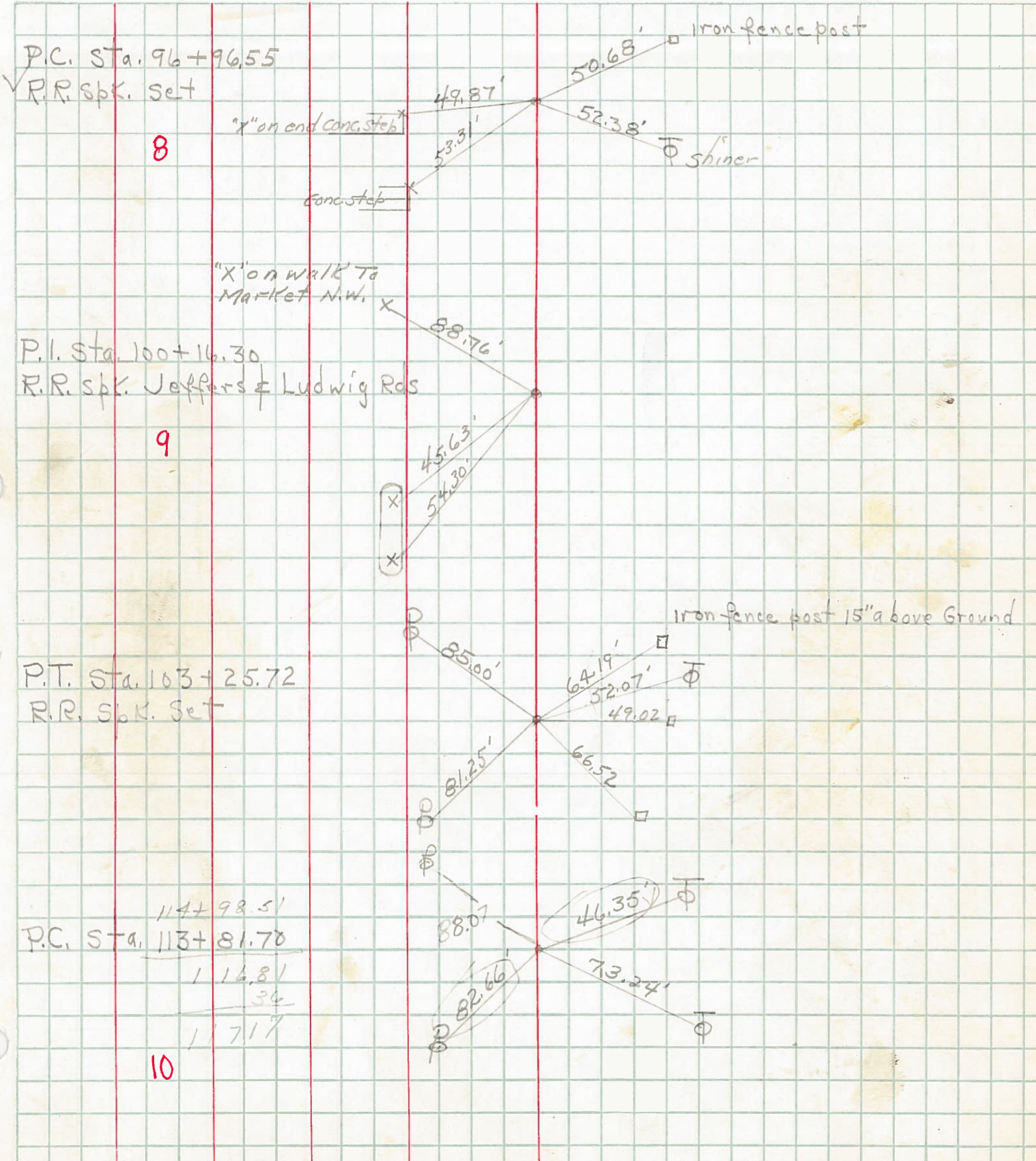
Silvester
 #
 crew

COUNTY Lucas DATE 1958

S. R. # 24 WEATHER

SEC. He-Luc. - Waterville (0.00) TEMP.

DESCRIPTION LEFT CENTER LINE RIGHT JOB NO.



8

9

10

P.C. Sta. 114+98.51
 1 14.81
 36
 1 717