

O.D.O.T. DISTRICT 2 SURVEY OFFICE

PERSONNEL

REFERENCE NO. 8-A

SHEET 12 OF 68

NOTES S. HUSS

H.C. B. VAN DYSEN

R.C. K. MOSER

DATE 5-28-97

WEATHER Partly Cloudy

TEMP. 76.1° F

ROUTE US-24

COUNTY Lucas

TOWNSHIP Providence

SECTION 5

T 5 N R 9 E

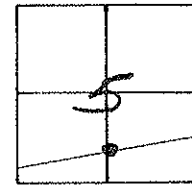
TYPE MONUMENT PK & WASHER

ON SURFACE - ~~BELOW~~ ON SURFACE

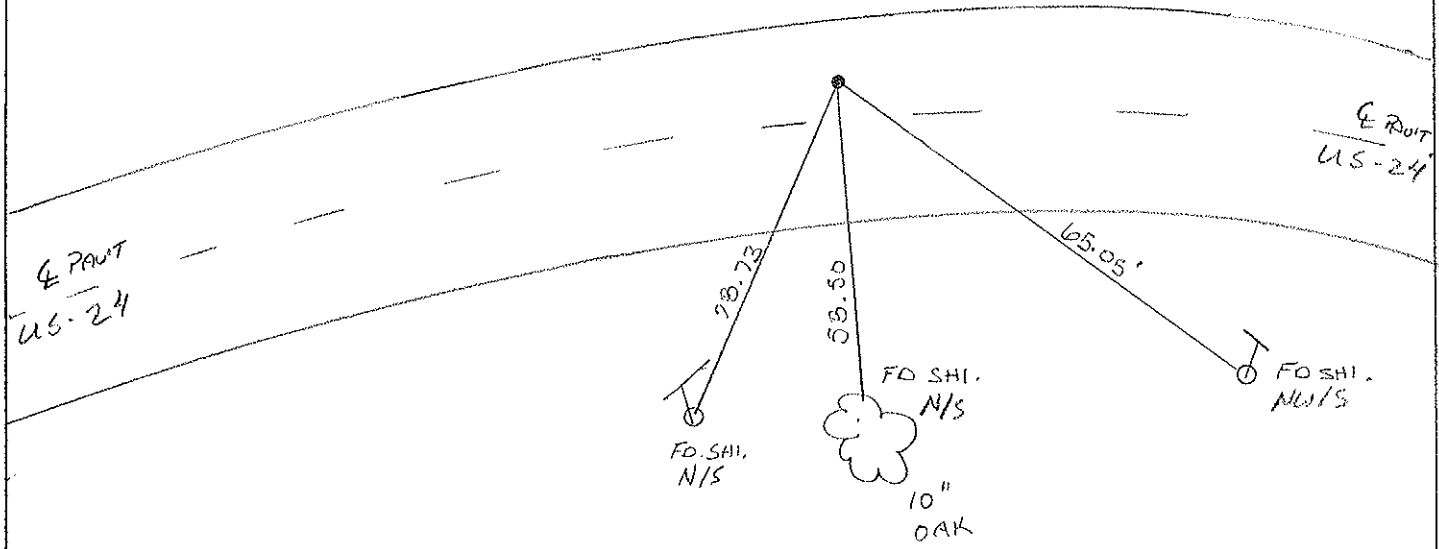
LEFT - ¢ PAV'T. - RIGHT 6.0' LT.

6.0' TO LT EDGE PAVEMENT

S.L.M. 98+96



SET PK/WASHER  
10-21-97  
SAH



O.D.O.T. DISTRICT 2 SURVEY OFFICE

PERSONNEL

REFERENCE NO. B-A

SHEET 5 OF \_\_\_\_\_

NOTES LOEHRKE

H.C. MOSEK

DATE 10-7-94

ROUTE U.S. 24

R.C. SLOVAK

WEATHER Sunny

COUNTY LUCAS

TEMP. +60

TOWNSHIP PROVIDENCE

SECTION 5

Set P.K./WASHER  
5-15-95  
C.L.

T. 5 N R. 9 E

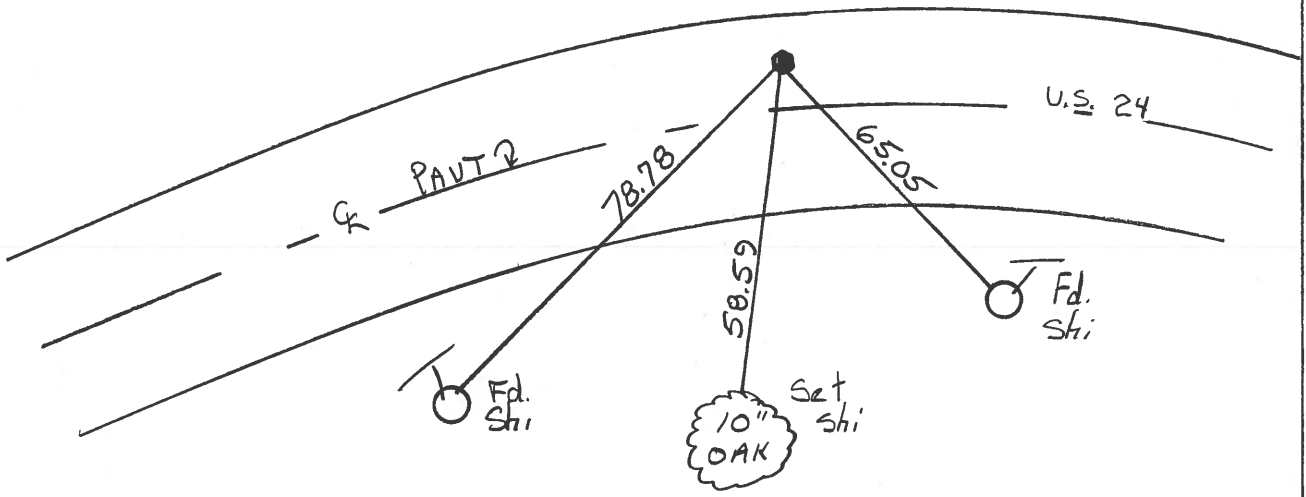
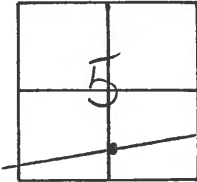
TYPE MONUMENT Lg R.R. SPIKE

~~ON SURFACE~~ - BELOW 2" BELOW

LEFT - C PAV'T. - ~~RIGHT~~ 6.6' Lt

5.7 TO Lt EDGE PAVEMENT

S.L.M. 98+72



# O.D.O.T. DISTRICT 2 SURVEY OFFICE

PERSONNEL \_\_\_\_\_

REFERENCE NO. 8-19

SHEET 5 OF \_\_\_\_\_

NOTES 1. Stone

H.C. D. Curtis

DATE 24 Aug. 89

ROUTE US#24

R.C. J. Householder

WEATHER Cloudy

COUNTY Lucas

TEMP. 70°

TOWNSHIP Providence

SECTION 5

T \_\_\_\_\_ R \_\_\_\_\_

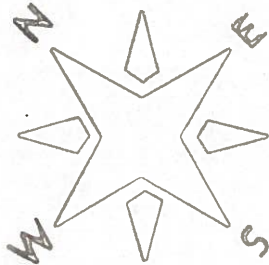
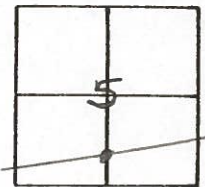
TYPE MONUMENT RR Spk.

ON SURFACE - BELOW 2" deep

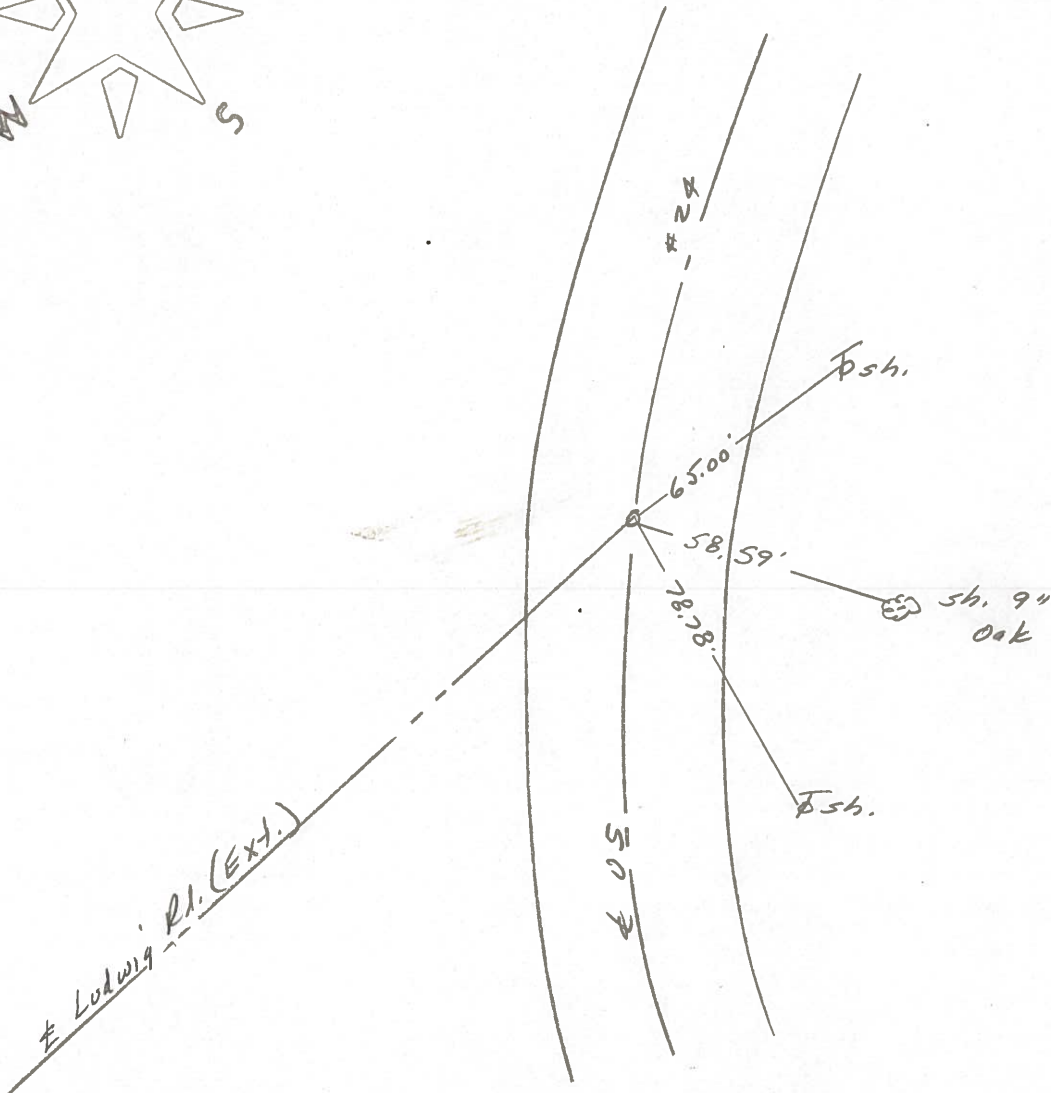
LEFT - & PAV'T. - RIGHT \_\_\_\_\_

TO \_\_\_\_\_ EDGE PAVEMENT

S.L.M. 98+66



OK 10/13/89  
I.R.S.



O.D.O.T. DISTRICT 2 SURVEY OFFICE

Sht. 11 of     

County Lucas S.R. US #24

Township Providence

Section 5

T    N, R    E

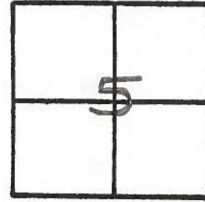
Personnel I. Stone  
R. Michalak  
P. Houser  
D. Curtis  
D. Granaty

8A

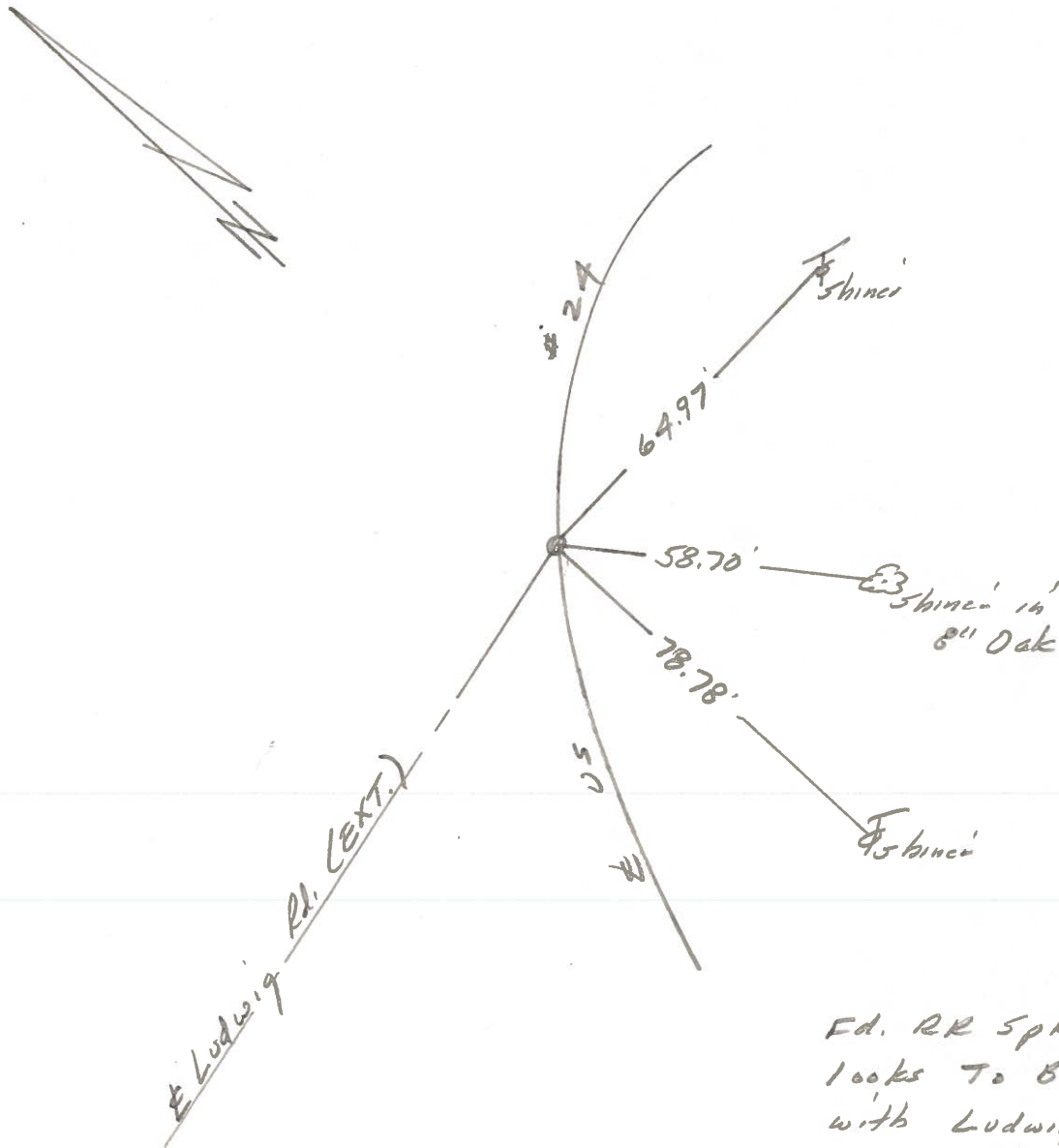
Date 24 June 1980

Weather Cloudy

Temp. 74°



REF. NO. 42084



Ed. RR Spk. To Surface  
looks To Be on Tang.  
with Ludwig Rd. extended  
6.7' to N. edge put.  
17.2' to S. edge put.