

O.D.O.T. DISTRICT 2 SURVEY OFFICE

PERSONNEL

REFERENCE NO. 9

SHEET 13 OF 68

NOTES S. HOSS

H.C. B. VANDUSEN

R.C. K. MOSER

DATE 5-28-97

WEATHER PARTLY CLOUDY/WINDY

TEMP. +61°F

ROUTE US-24

COUNTY Lucas

TOWNSHIP Providence

SECTION 5

T 5 N R 9 E

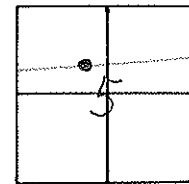
TYPE MONUMENT HEAD OF BOLT W/CRISTED "+"

ON SURFACE - ~~BELOW~~ ON

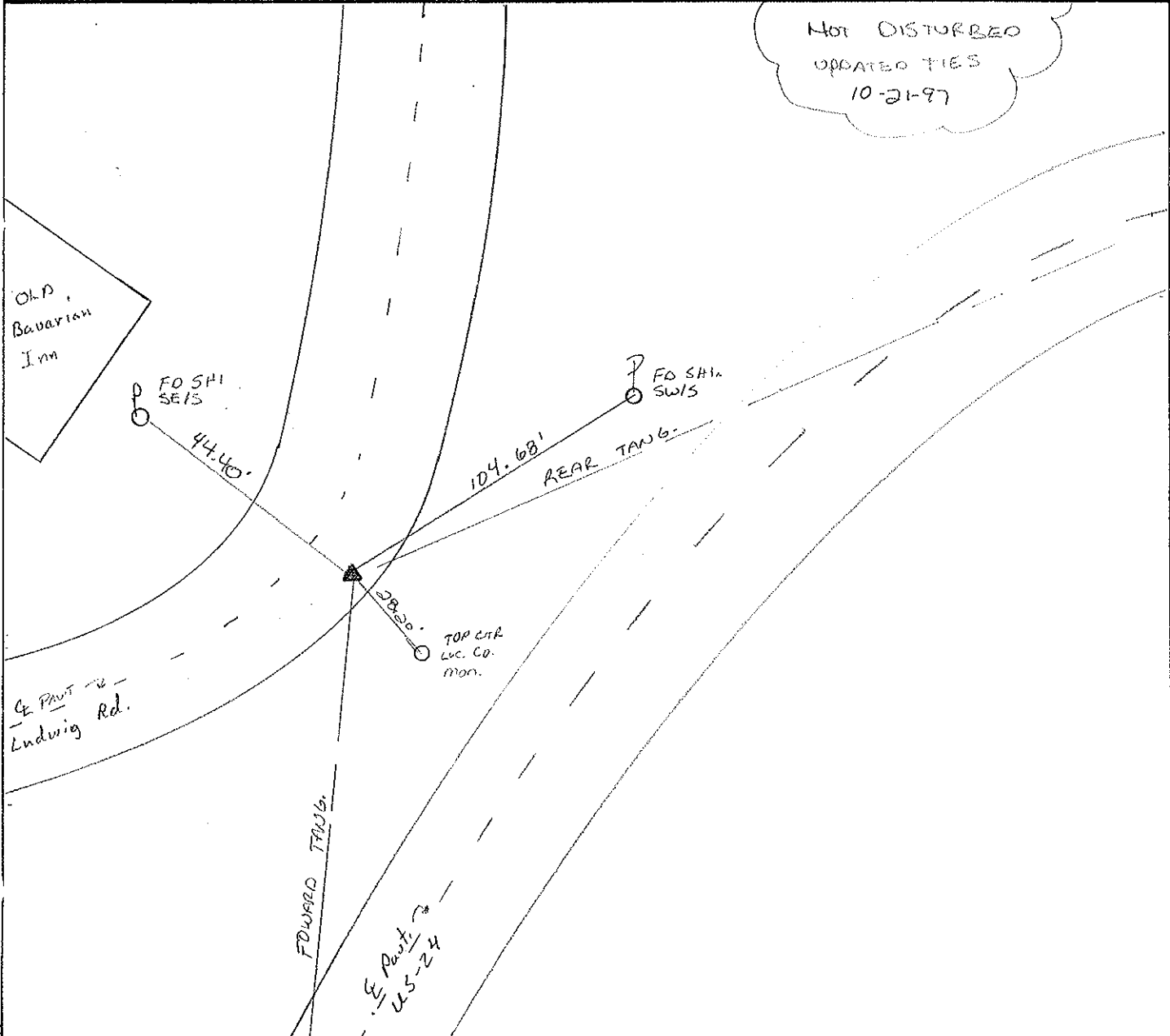
LEFT - ~~E~~ PART - RIGHT 42' LT OF U.S. 24

2' TO LT EDGE PAVEMENT

S.L.M. 100 +13



NOT DISTURBED  
UPDATED TIES  
10-21-97



O.D.O.T. DISTRICT 2 SURVEY OFFICE

PERSONNEL \_\_\_\_\_

REFERENCE NO. 9

SHEET 6 OF 2

NOTES LOHRKE

H.C. VOGEL

R.C. CANTERBURY

DATE 3-29-94

WEATHER CLOUDY

TEMP. 35

ROUTE U.S. 24

COUNTY LUCAS

TOWNSHIP PROVIDENCE

SECTION 5

T 5 N R 9 E

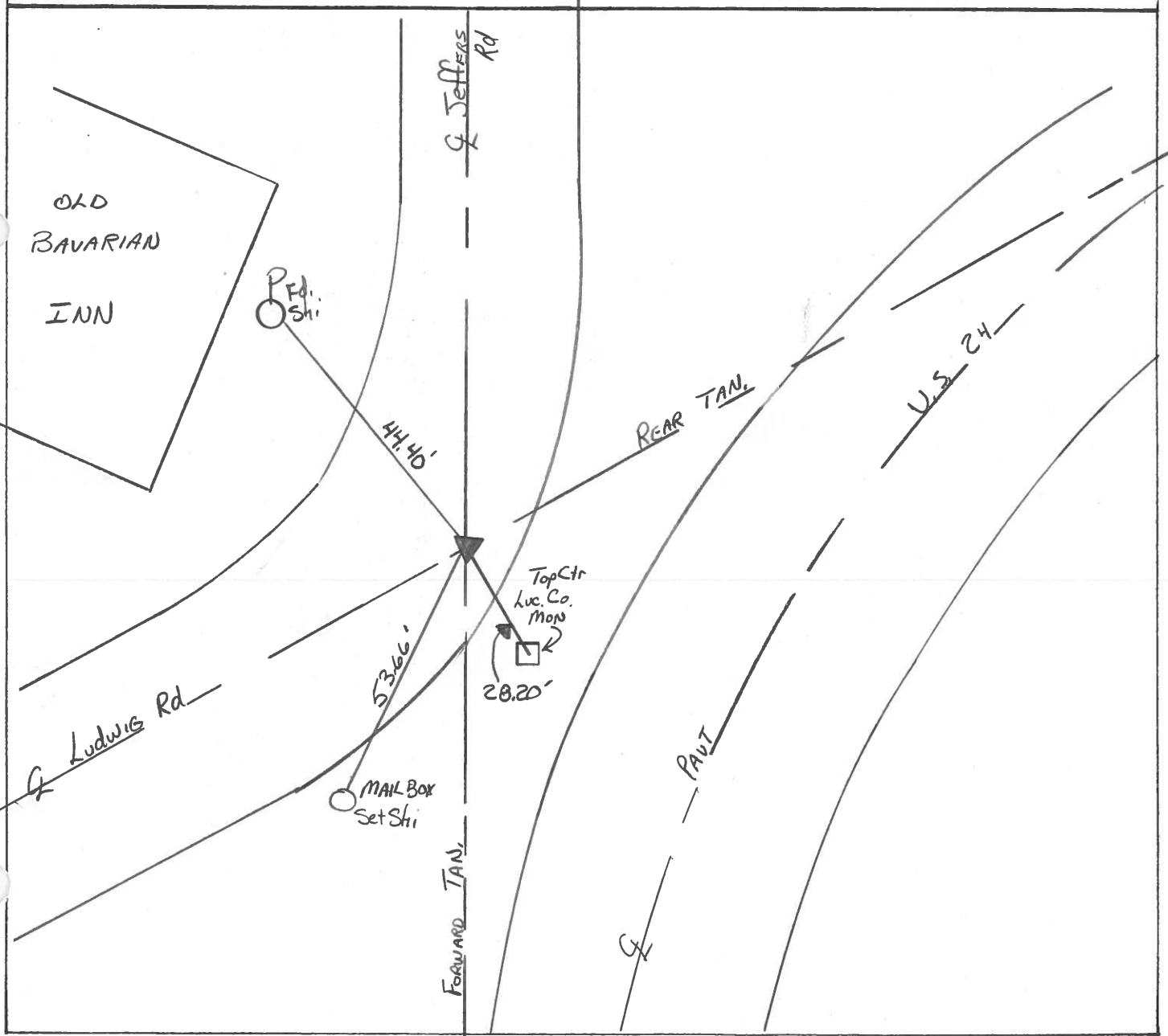
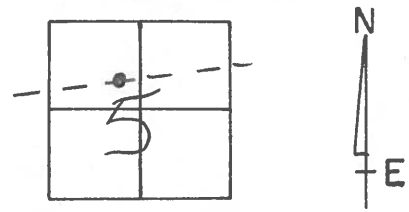
TYPE MONUMENT HEAD of Bolt w/ chiseled

ON SURFACE - BELOW Yes

LEFT-C PAV'T. - RIGHT 42' LF. U.S. 24

± 29 TO Lt EDGE PAVEMENT

S.L.M. 99+92



# O.D.O.T. DISTRICT 2 SURVEY OFFICE

PERSONNEL \_\_\_\_\_

REFERENCE NO. 9

SHEET 6 OF \_\_\_\_\_

NOTES 1. Stone

H.C. D. Lutfis

DATE 24 Aug. 89

ROUTE US #24

R.C. J. Householder

WEATHER Cloudy

COUNTY Lucas

TEMP. 70°

TOWNSHIP Providence

SECTION 5

T \_\_\_\_\_ R \_\_\_\_\_

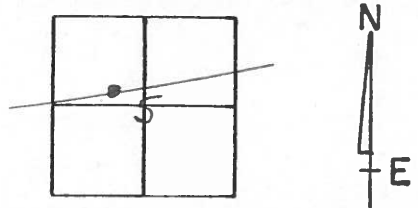
TYPE MONUMENT Sq. Bolt

ON SURFACE - BELOW Surface

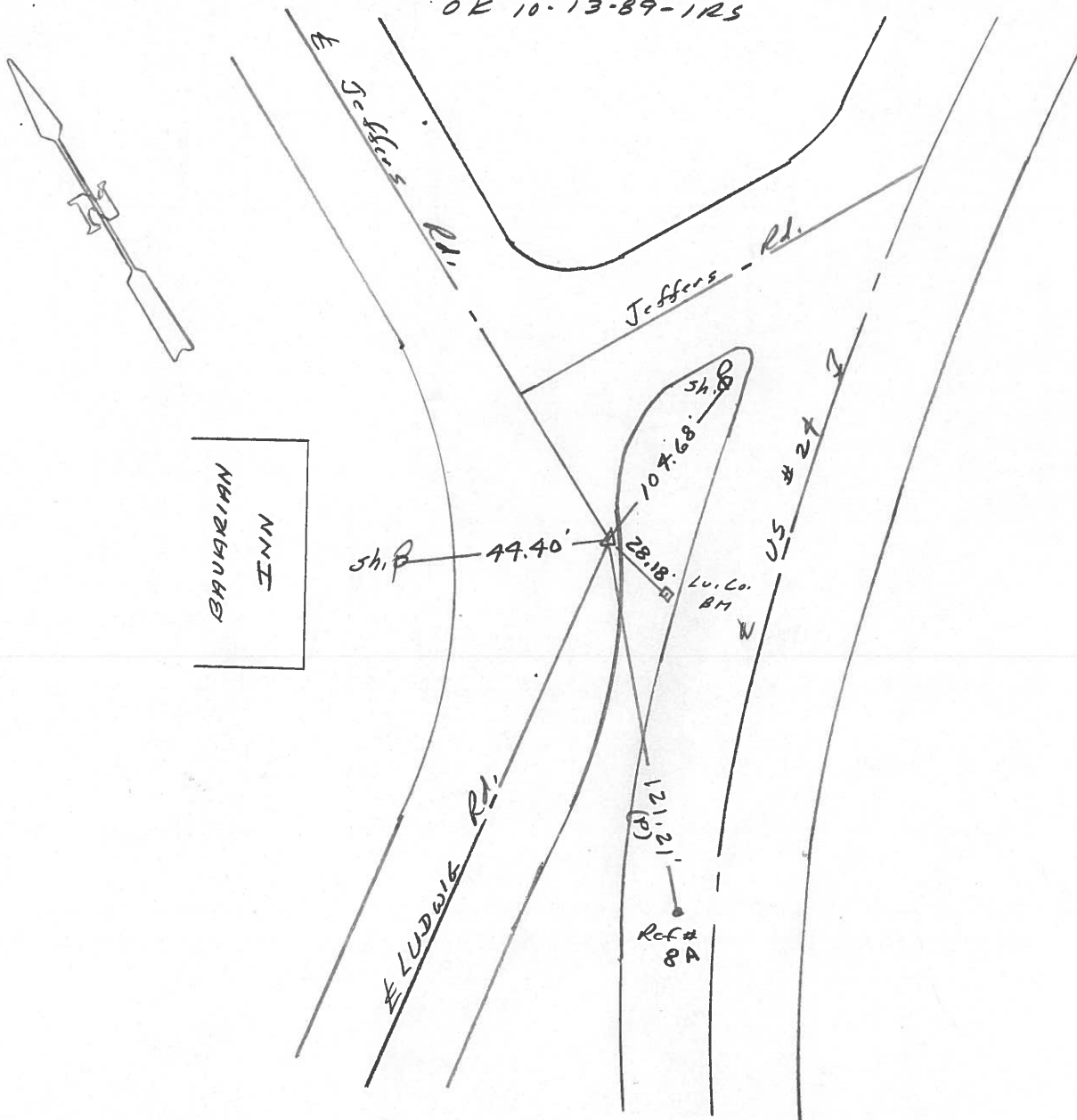
LEFT- & PAV'T. - RIGHT \_\_\_\_\_

TO \_\_\_\_\_ EDGE PAVEMENT

S.L.M. 99+80



OK 10-13-89-1RS



ODOT. DISTRICT 2 SURVEY OFFICE

Sht. 12 of

County Lucas ~~S.R.~~ US #24

Township Providence

Section 5

T N, R E

Personnel L. Stone

R. Michalak

P. Houser

D. Curtis

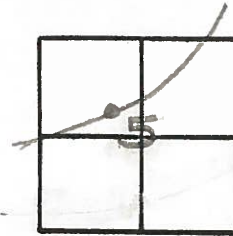
D. Granaty

9

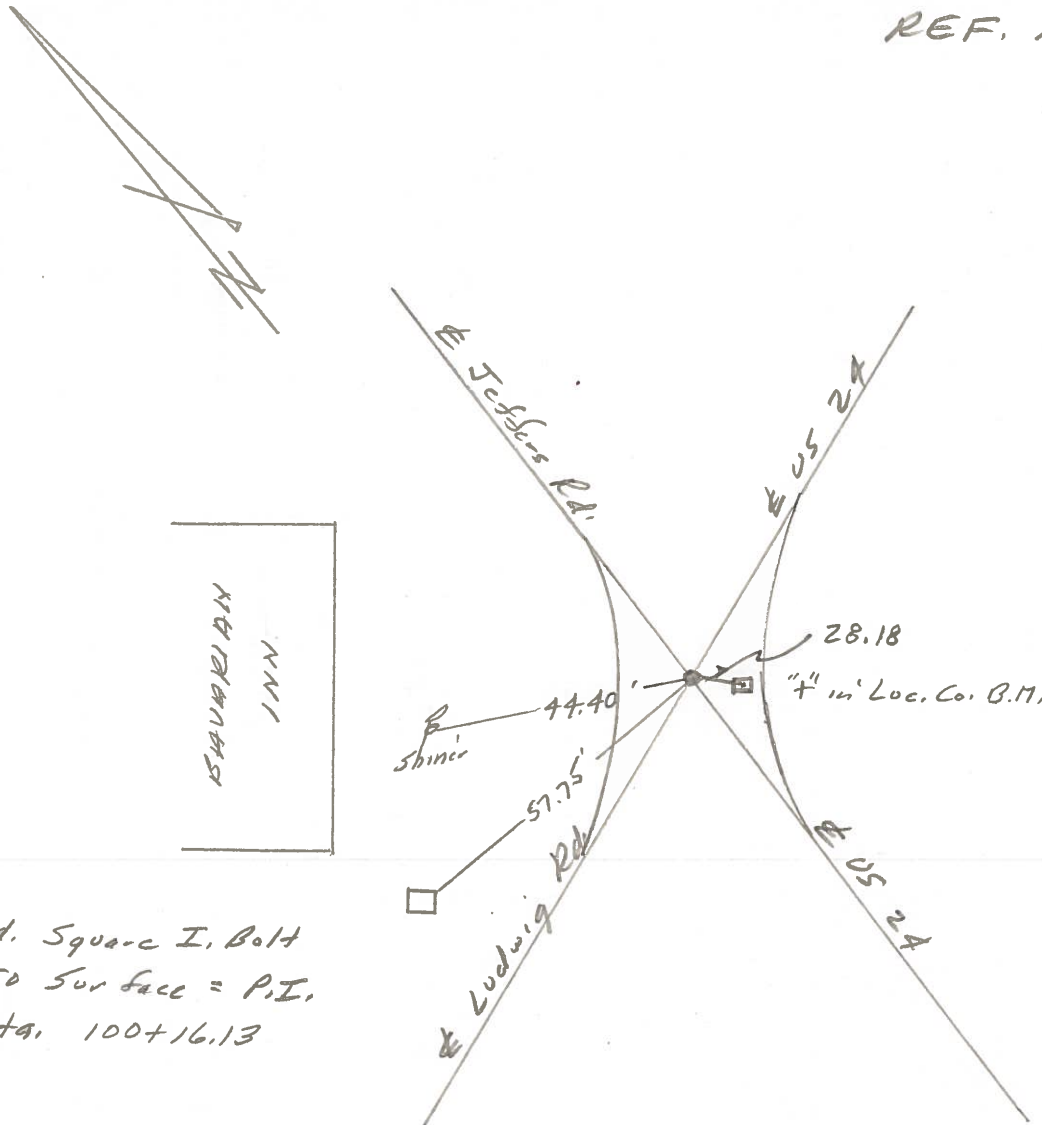
Date 24 June 1980

Weather Warm

Temp. 72°



REF. No. 4209



Fd. Square I, Bolt  
To Surface = P.I.  
Sta. 100+16.13

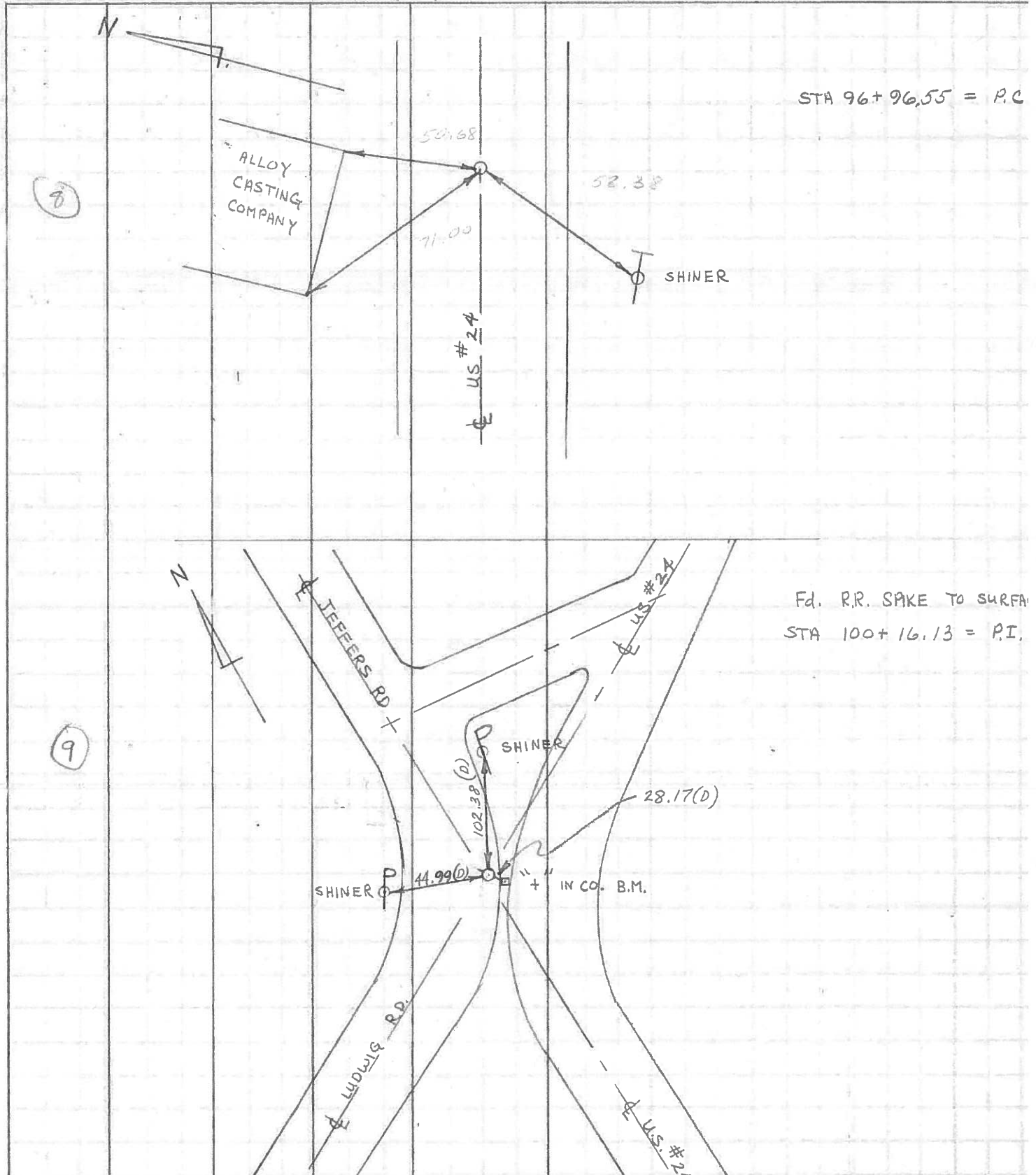
PERSONNEL	TITLE	PERSONNEL	TITLE
<u>W. DENNO</u>			
<u>D. CURTIS</u>			
<u>D. STEVENS</u>			

COUNTY LUCAS DATE JULY 1 1971

S. R. US. #24 WEATHER CLOUDY

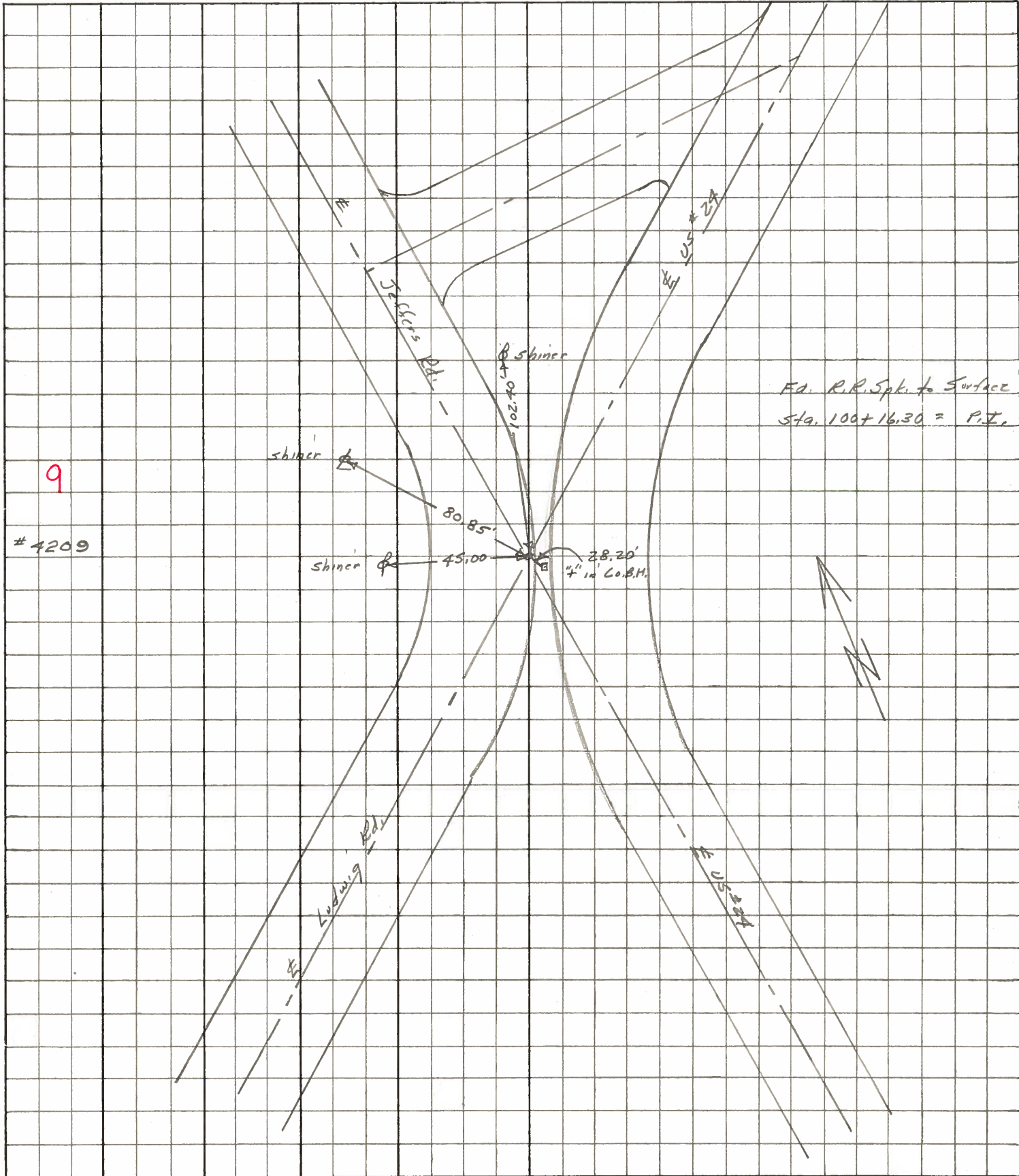
SEC. \_\_\_\_\_ TEMP. 80 ±

DESCRIPTION \_\_\_\_\_ REFERENCE TO CONTROL POINTS \_\_\_\_\_ JOB NO. \_\_\_\_\_  
LEFT CENTER LINE RIGHT



PERSONNEL	TITLE	PERSONNEL	TITLE	COUNTY	DATE
<u>Stone</u>	<u>Notes</u>			<u>Lucas</u>	<u>May 68</u>
<u>Beck</u>	<u>Flag</u>			S. R. <u># 27</u>	WEATHER <u>Fair</u>
<u>Michalak</u>	<u>Tape</u>			SEC. _____	TEMP. _____
<u>Schroder</u>	<u>Tape</u>				

DESCRIPTION References to Control Points JOB NO. \_\_\_\_\_  
 LEFT CENTER LINE RIGHT





PERSONNEL	TITLE	PERSONNEL	TITLE	COUNTY	2000.5	DATE	2 Feb 16
Stone				S. R.	#29	WEATHER	Cool
Beck				SEC.		TEMP.	29°
Schuster							

DESCRIPTION Refs to Control Pts. LEFT CENTER LINE RIGHT JOB NO.

79+37.57 = P.T.		48.80'	N.E. To "X" Middle of C.B. (P)
7	Ed. R.R. Spk. 1/2" Below Surface	37.23' 50.67'	S. To Shiner in T.P. (D) S.W. To Iron Fence Post (P)
96+96.55 = P.C.		50.68'	N.N.E. To Cor. Bldg (D)
8	Set PK Nail 3/4" Below Surface	71.00' 52.38'	N.W. To S.W. Cor. Bldg. (D) S.W. To Shiner in T.P. (D)
100+16.30 = Δ		38.76'	N.E. To "t" on N.W. Cor. Walkthru. (D)
9	Jeffers & Ludwig Pkts. Ed. R.R. Spk. to Surface	45.63' 54.30'	N. To "t" on E. Edge Pump Island (D) N.W. To "t" on W. " " " (D)
112+81.70 = P.C.		88.07'	S.E. To Shiner in T.P. (D)
10	Set PK No. 1 To Surface	46.35' 82.66'	S.E. To Shiner in T.P. (D) N.W. To Shiner in T.P. (D)
114+98.51 = Δ		103.46'	S.W. To Shiner in T.P. (D)
11	Ed. R.R. Spk. to Surface	74.84' 51.91'	S.E. To Shiner in T.P. (D) N.W. To Shiner in T.P. (D)
116+15.03 = P.T.		40.99'	N.W. To Shiner in T.P. (D)
12	Set PK 1/2" Below Surface	70.23 107.57	S.W. To Shiner in T.P. (D) S.E. To Shiner in T.P. (D)
127+99.53 = Δ		69.19'	S. To Steel Fence Post (D)
13	Ed. 1/2" I. Pipe at Surface	80.09' 36.08' 34.21'	S.W. To Shiner in T.P. (D) N. To Shiner in T.P. (D) N.W. To Shiner in End Guard Post (D)

PERSONNEL	TITLE	PERSONNEL	TITLE	COUNTY	Lucas	DATE	1958
Silvester				#	24	WEATHER	
+				SEC.	He-LUC. - Waterville	TEMP.	
crew				(0.00)			

DESCRIPTION	LEFT	CENTER LINE	RIGHT	JOB NO.
-------------	------	-------------	-------	---------

