

O.D.O.T. DISTRICT 2 SURVEY OFFICE

PERSONNEL

REFERENCE NO. 9-A

SHEET 14 OF 68

NOTES S. AUSS

H.C. B. VAN DUSEN

R.C. K. MOSER

DATE 5-28-97

WEATHER PARTLY CLOUDY/WINDY

TEMP. +61°F

ROUTE US-24

COUNTY LUCAS

TOWNSHIP PROVIDENCE

SECTION 5

T. 5 N. R. 9 E

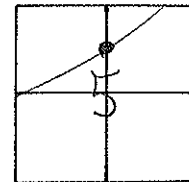
TYPE MONUMENT PK & WASHER

ON SURFACE - ~~BELOW~~ YES

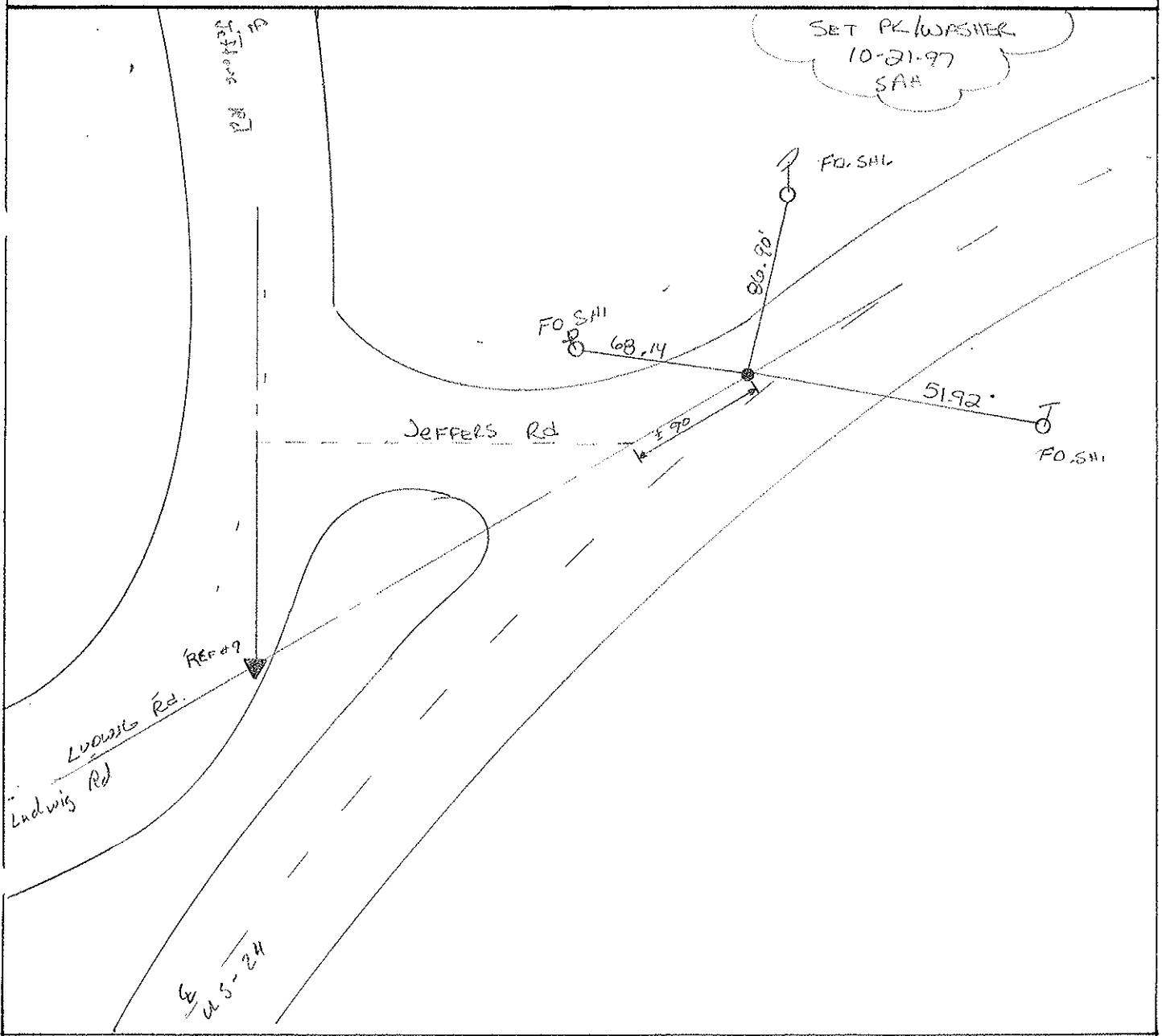
LEFT- & PAV'T. - RIGHT 2.3

7.6 TO LT. EDGE PAVEMENT

S.L.M. 103+25



SET PK/WASHER
10-21-97
SAM



O.D.O.T. DISTRICT 2 SURVEY OFFICE

PERSONNEL

REFERENCE NO. 9-A

SHEET 7 OF

NOTES VAN DUSEN

H.C. K. MOJER

R.C. R. SLOVAK

J. HERMILLER P

DATE 10-7-94

WEATHER SUNNY

TEMP. +60° F.

ROUTE US #24

COUNTY LUCAS

TOWNSHIP Providence

SECTION 5

T. 5 N R. 9 E

Set P.K/WASHER
5-15-95

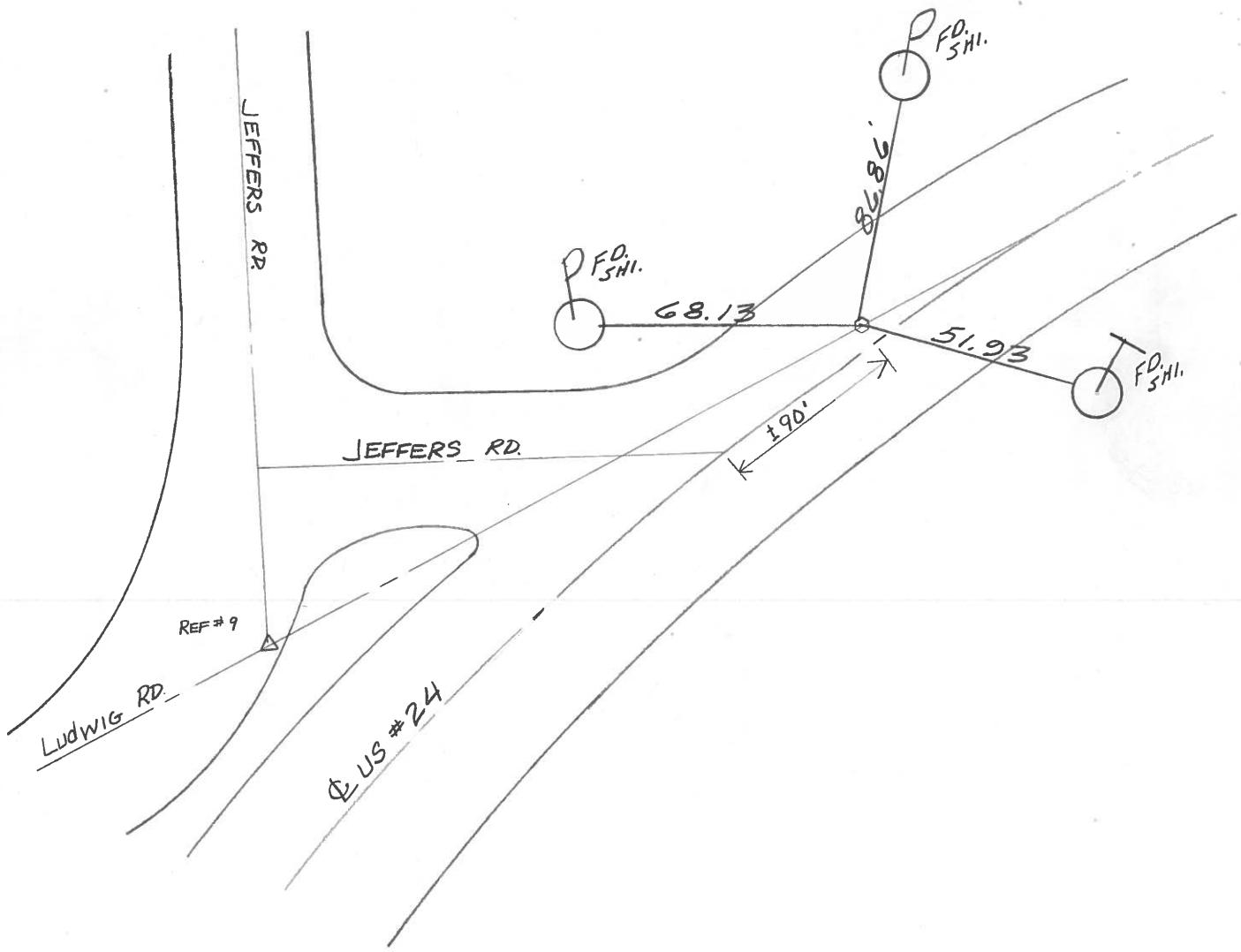
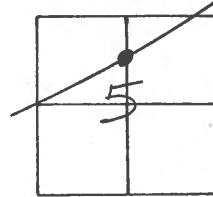
TYPE MONUMENT LG. R.R. SPK.

ON SURFACE - BELOW 2" BELOW

LEFT - CL PAV'T. - RIGHT 2.3

9.6 TO LT. EDGE PAVEMENT

S.L.M. 103+04



O.D.O.T. DISTRICT 2 SURVEY OFFICE

PERSONNEL _____

REFERENCE NO. 9-A

SHEET 7 OF _____

NOTES 1. Stone

H.C. D. Curtis

DATE 24 Aug. 89

ROUTE US #24

R.C. J. Housholder

WEATHER Cloudy

COUNTY Lucas

TEMP. 70°

TOWNSHIP Providence

SECTION 5

T _____ R _____

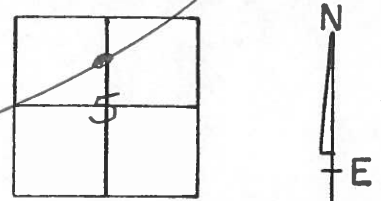
TYPE MONUMENT RR Spk.

ON SURFACE - BELOW 2" deep

LEFT- & PAV'T. - RIGHT _____

TO _____ EDGE PAVEMENT

S.L.M. 102+72



OK-10/13/89 1RS

